

5 25 915 011 00

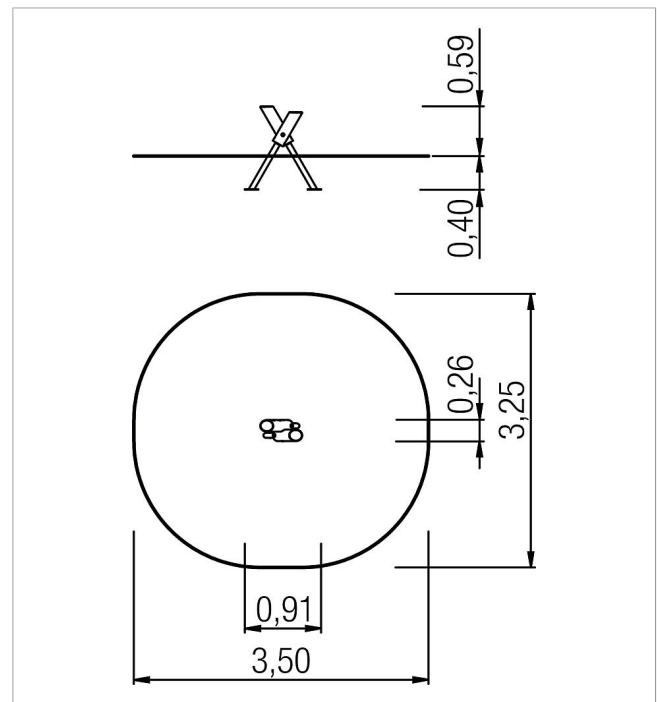
climbo balancing element x step


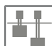






made in germany



Scope of delivery

2x post construction: softwood
Fittings: Stainless steel (V2A)



	Material	SW pi
	Foundation level	FL 1
	Minimum space	3,25x3,50x2,39 m
	Free falling height	59 cm
	Impact protection net	9,5 m ²
	Foundations	2x CF or 2x PFs
	Largest section	Ø 14x55 cm
	Heaviest section	2,44 kg