

5 55 331 0

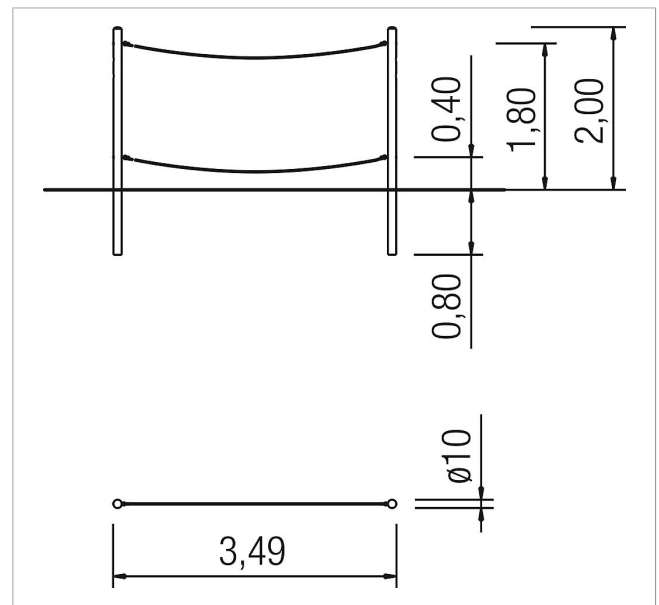
balance Waltz balancing rope with metal posts








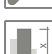

made in germany



Scope of delivery

2x post: galvanised steel
2x rope: plastic-coated steel cable



	Material	Steel
	Foundation level	FL 1
	Minimum space	3,49x0,10x2,20 m
	Free falling height	40 cm
	Impact protection net	-
	Foundations	2x CF
	Assembly	2 persons/1.5 h
	Largest section	280xØ 10 cm
	Heaviest section	25 kg