

5 55 312 5

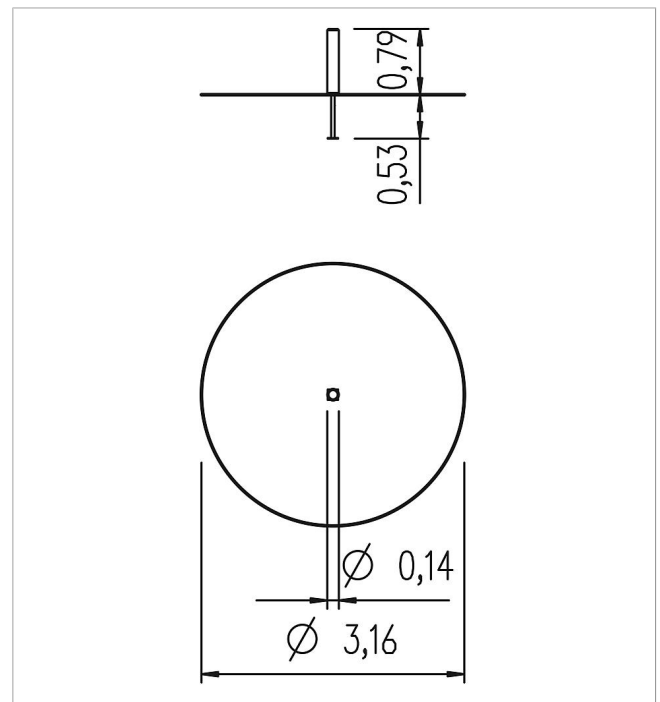
## balance step 80


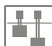







made in germany



### Scope of delivery

- 1x Step 80: SW
- 1x post shoe: galvanised steel



	Material	SW pi
	Foundation level	FL 3
	Minimum space	Ø 3,16x2,59 m
	Free falling height	79 cm
	Impact protection net	8,0 m <sup>2</sup>
	Foundations	1x CF
	Assembly	1 person/0.2 h
	Largest section	77xØ16 cm
	Heaviest section	12,5 kg