

5 25 915 011 00

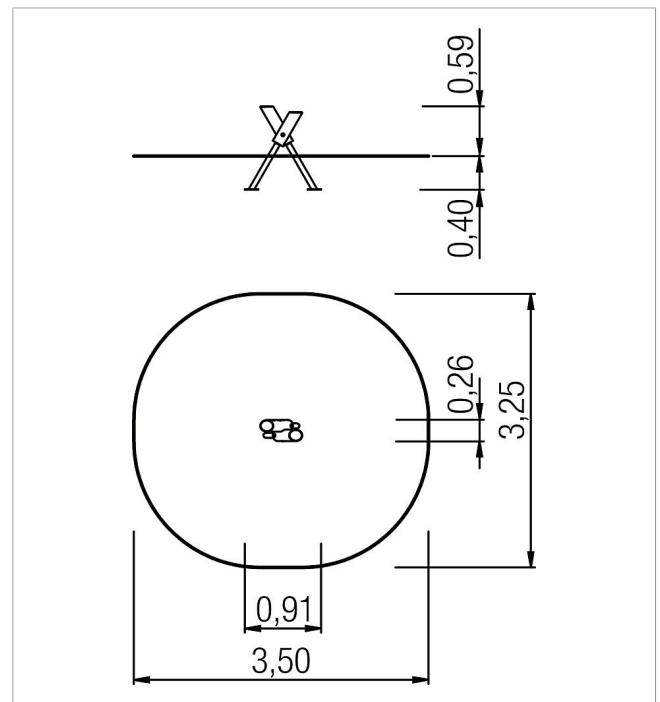
## climbo Balance element x step


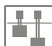






made in germany



### Scope of delivery

2x post construction: softwood  
Fittings: Stainless steel (V2A)



	Material	SW pi
	Foundation level	FL 1
	Minimum space	3,25x3,50x2,39 m
	Free falling height	59 cm
	Impact protection net	9,5 m <sup>2</sup>
	Foundations	2x CF or 2x PFs
	Largest section	Ø 14x55 cm
	Heaviest section	2,44 kg