

5 54 041 0

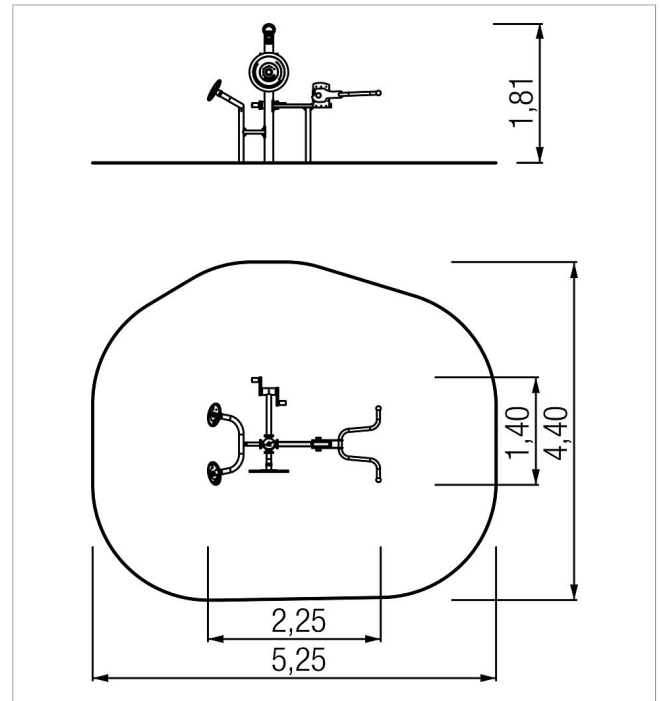
**fit active-stationback
Inclusion**


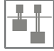




made in germany



Scope of delivery

1x active-station: stainless steel, powder-coated steel, HDPE



	Material	Stainless steel, HDPE
	Foundation level	FL 2
	Minimum space	5,25x4,40x3,80 m
	Free falling height	-
	Impact protection net	1,0 m ²
	Foundations	1x CF