

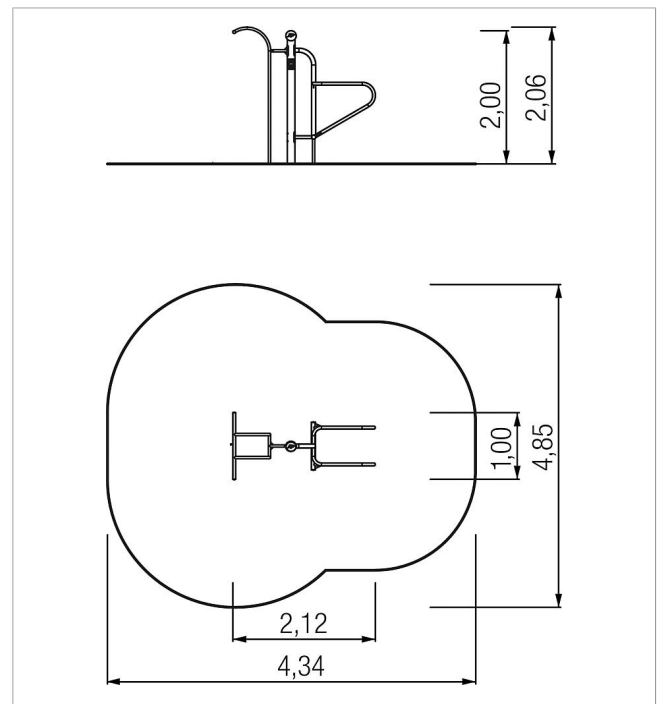
5 54 051 0

**fit active-station
combination V dip &
pull-up**
made in germany



Scope of delivery

1x active-station combination: stainless steel



	Material	Stainless steel
	Foundation level	FL 2
	Minimum space	4,34x4,85x3,80 m
	Free falling height	120 cm
	Impact protection net	3,5 m ²
	Foundations	1x CF