

ALMANAC

DESIGN SPOT by

ege[®]

design · quality · respect



BENJAMIN WEBB

Born in 1985. Holds an Interior Design degree from Kingston University. Has worked as an interior designer in London since 2007. Currently heading up the Superfutures brand with architect Andy Martin, launching early 2014.

In 2013 was winner of a competition powered by ege carpets in association with FX Magazine. Now presented as the collection Almanac.

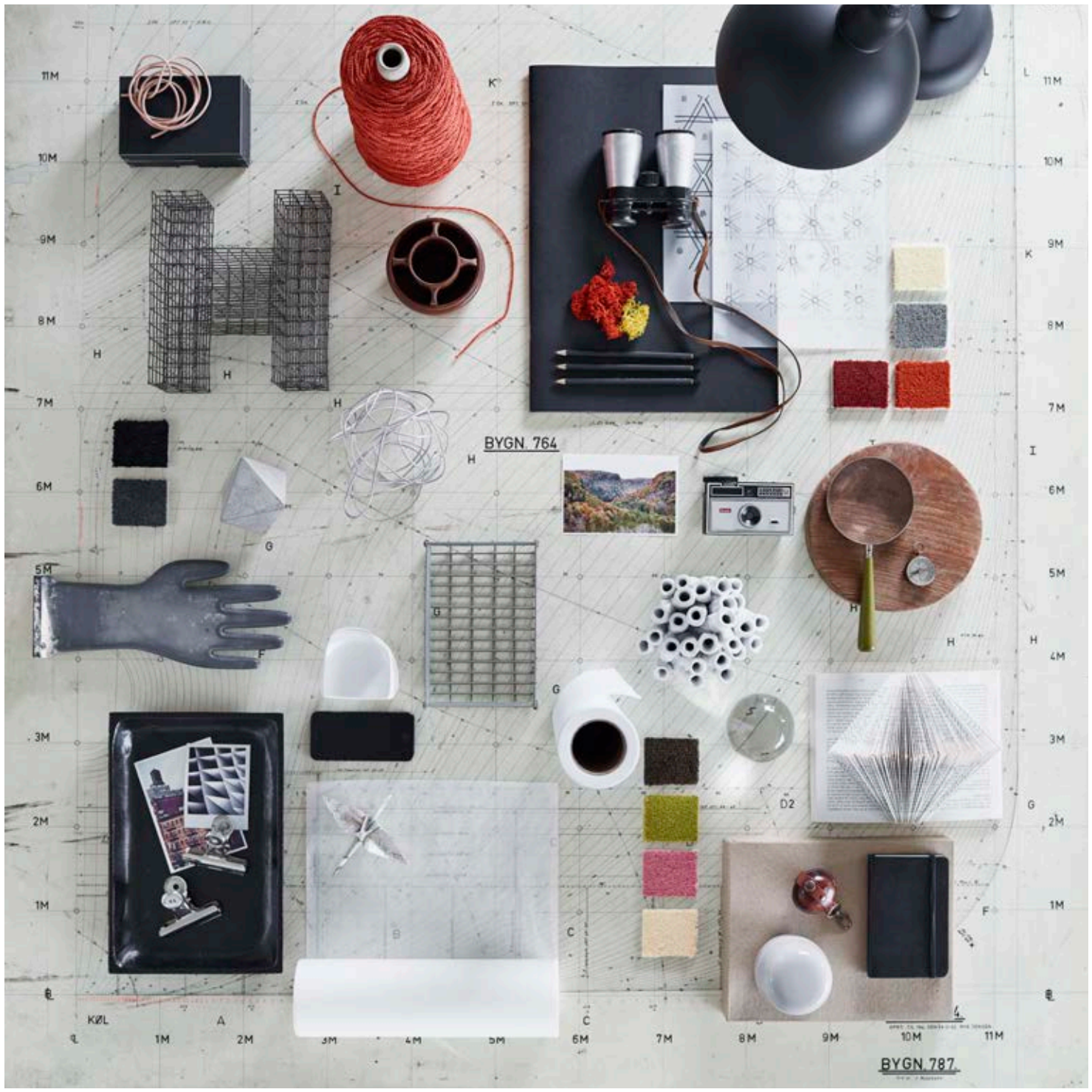
Living 50 miles from civilisation or working in the centre of a thriving capital city, we all share a connection with each other and the world around us.

Almanac celebrates the relationship between these two realities by forecasting mans struggle to understand mother nature and the modern world.

The collection sets out to express, inspire and push the boundaries between on-grid and off-grid through a range of multilayered designs and colourways.

Climb above tree tops and leafy terrain, wander through electric avenues and explore a birds-eye-view of our ever changing environment.

A duality of modern life and finding the balance.



BYGN 764

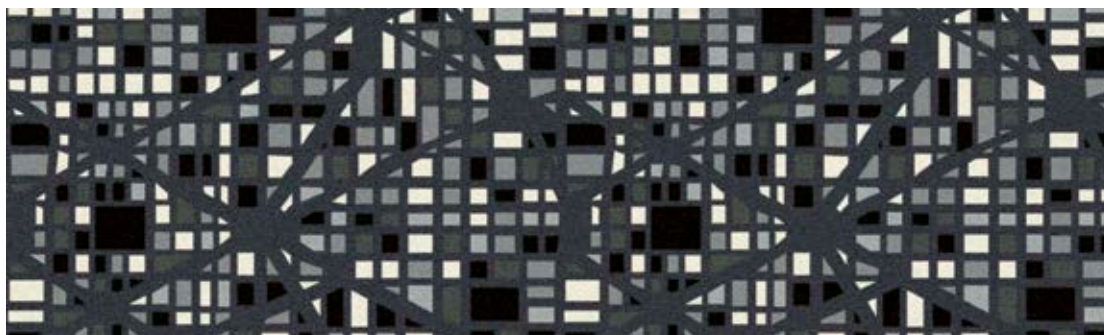
BYGN 787


11M
10M
9M
8M
7M
6M
5M
4M
3M
2M
1M

11M
10M
9M
8M
7M
6M
5M
4M
3M
2M
1M

K ZL A 3M 4M 5M 6M 7M 8M 9M 10M 11M

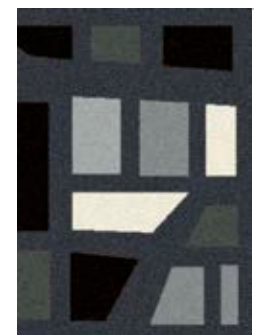




RF52202660 On-Grid 
w: 195.6 cm x l: 185.4 cm

5220

C1	C2	C3	C4	C5	C6
GB9	GB8	AC54	AC53	GB1	GB12



30 cm

40 cm



RF52202661 On-Grid
w: 195.6 cm x l: 185.4 cm

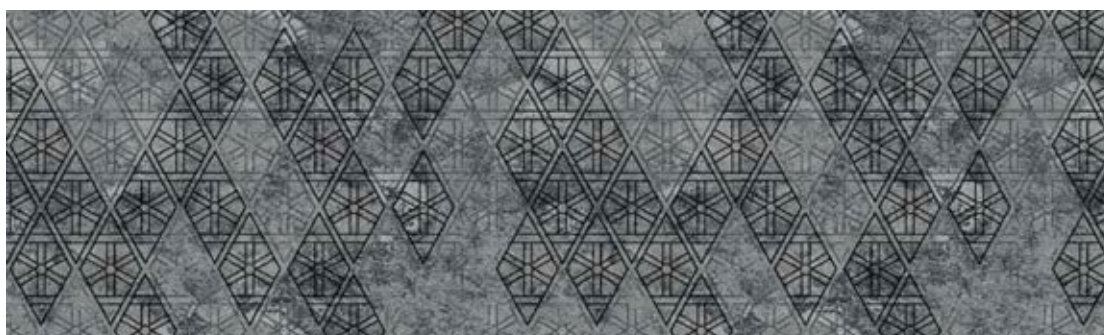
5220


C1	C2
GB9	GB12



30 cm

40 cm



RF52202662 Off-Grid 
w: 195.6 cm x l: 216.5 cm

5220

C1	C2	C3	C4	C5
GB8	AC53	GB9	GB12	AC54




30 cm

40 cm

SPRING

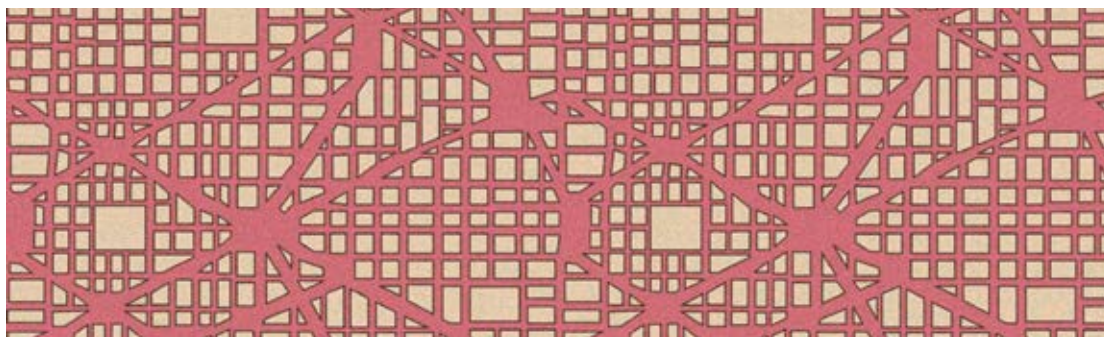


RF52752663 On-Grid 
w: 195.6 cm x l: 185.4 cm

5275



30 cm

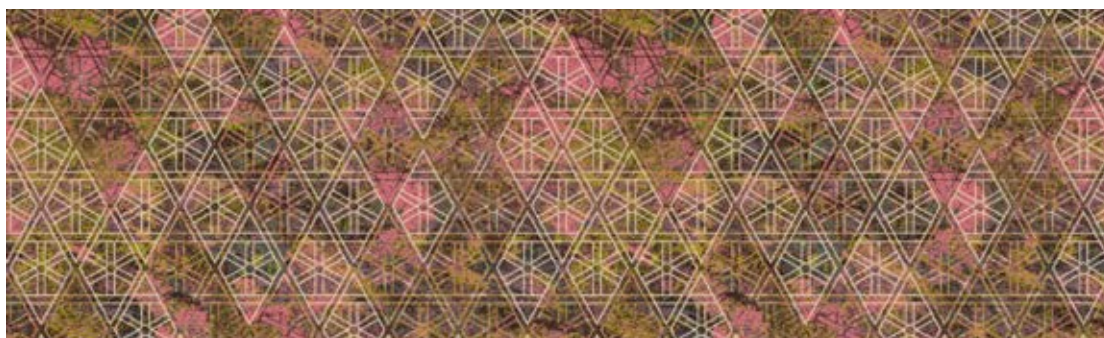



RF52752664 On-Grid
w: 195.6 cm x l: 185.4 cm

5275

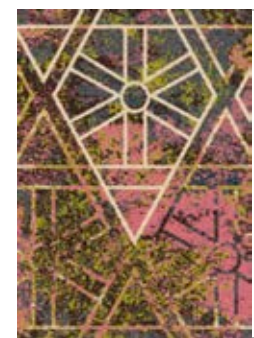


30 cm



RF52752665 Off-Grid 
w: 195.6 cm x l: 216.5 cm

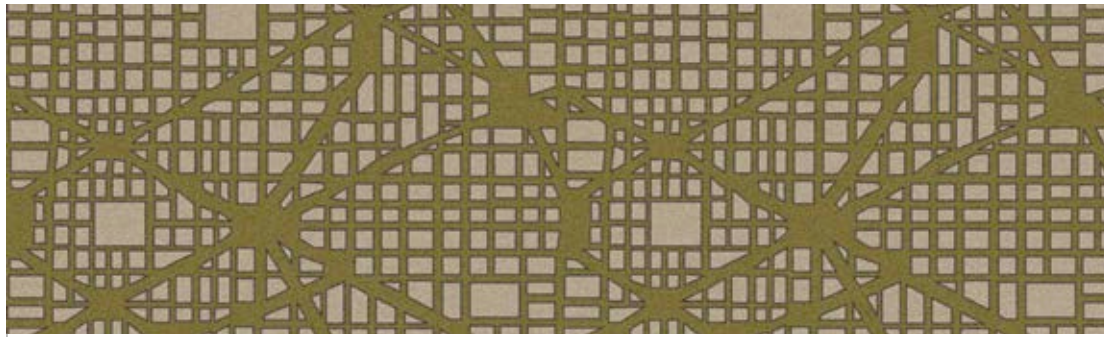
5275



30 cm



SUMMER



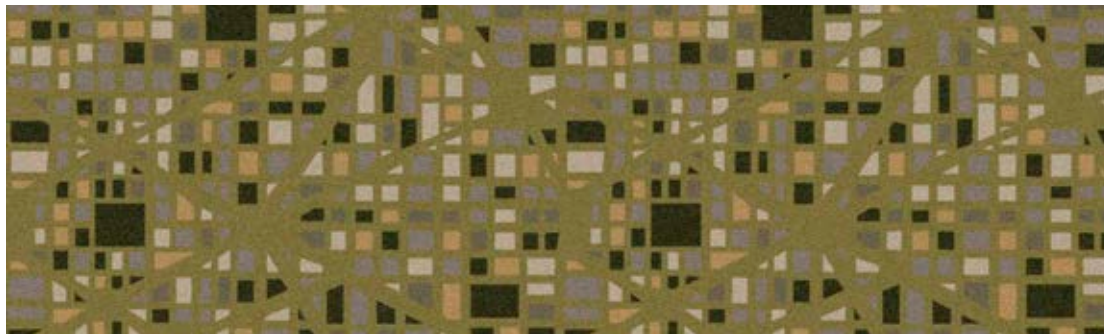
RF52952667 On-Grid
w: 195.6 cm x l: 185.4 cm

5295



30 cm

40 cm



RF52952666 On-Grid 
w: 195.6 cm x l: 185.4 cm


5295



30 cm

40 cm



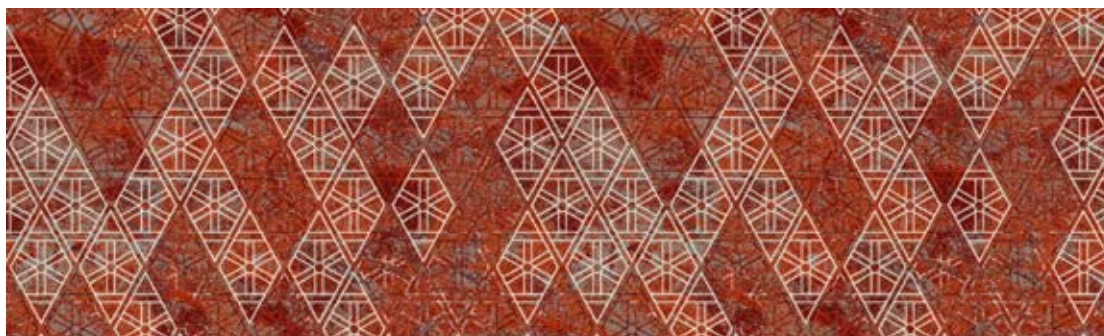
RF52952668 Off-Grid 
w: 195.6 cm x l: 216.5 cm


5295



30 cm

40 cm

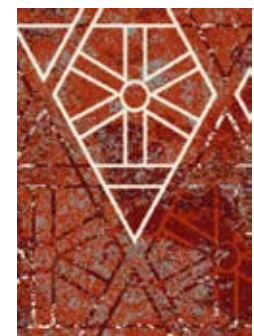


RF52202671 Off-Grid 
w: 195.6 cm x l: 216.5 cm

400 cm

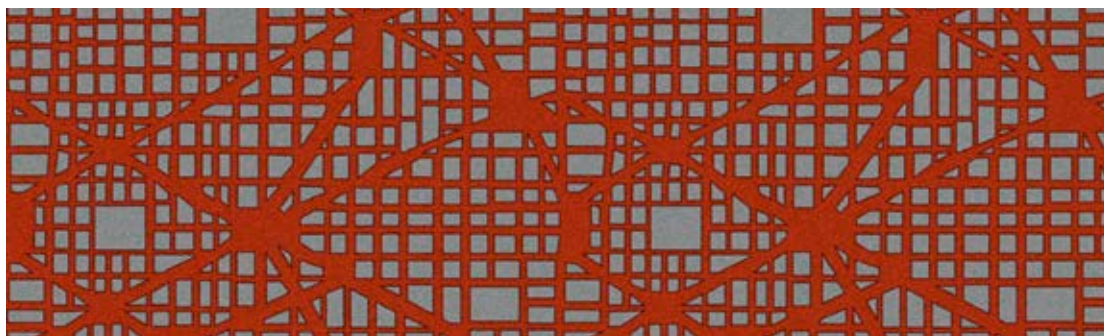
5220


						
GB4	GB5	GB8	AC52	AC49	AC48	GB1



30 cm


40 cm



RF52202670 On-Grid 
w: 195.6 cm x l: 185.4 cm

400 cm

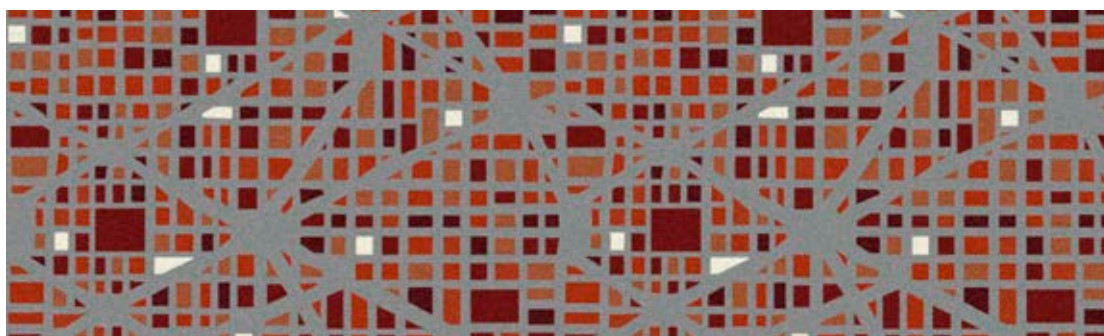
5220


		
GB4	GB8	AC52



30 cm


40 cm



RF52202669 On-Grid 
w: 195.6 cm x l: 185.4 cm

400 cm

5220

						
GB8	AC49	GB1	AC52	AC48	GB4	GB5



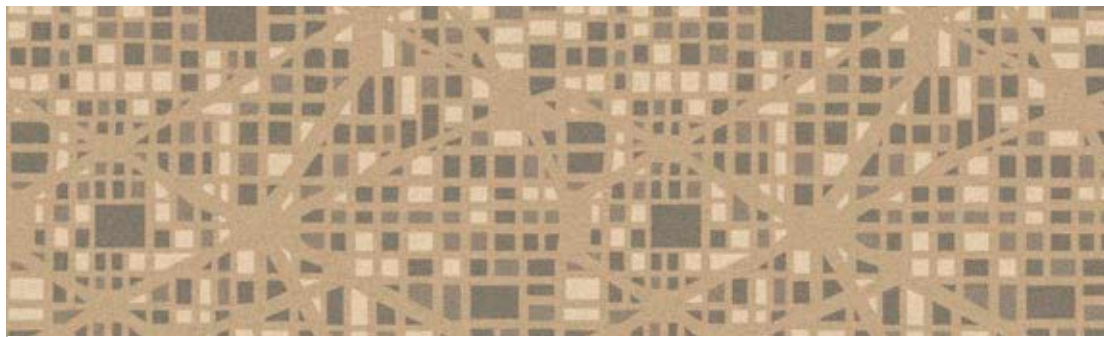
30 cm


40 cm





WINTER

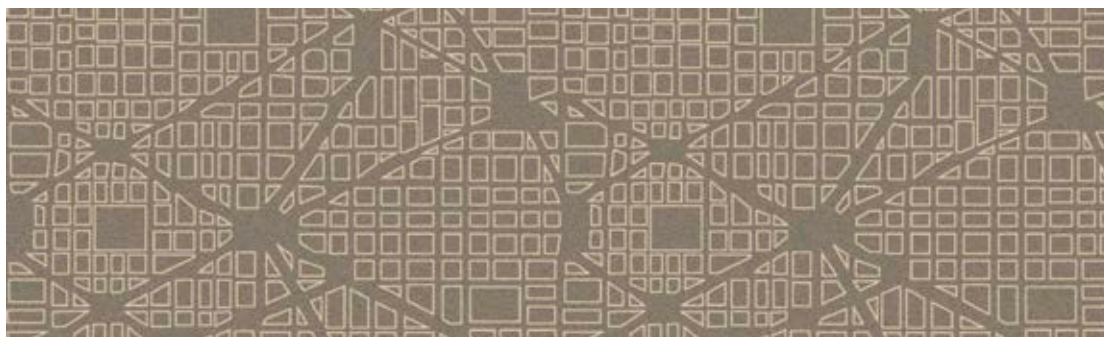


RF52752672 On-Grid 
w: 195.6 cm x l: 185.4 cm



30 cm

40 cm




RF52752673 On-Grid
w: 195.6 cm x l: 185.4 cm



30 cm

40 cm



RF52752674 Off-Grid 
w: 195.6 cm x l: 216.5 cm



30 cm

40 cm

About Almanac

2 unique broadloom designs in contemporary colour shades.

All this with:

- Recolour options
- No minimum order requirements
- 9 standard qualities (see technical specifications p. 14-15)
- Undisputed performance standard EN 1307
- Performance classification to fit any need; heavy & extra heavy use
- 24-hour sample service
- Dispatch within 2 weeks from receipt of order

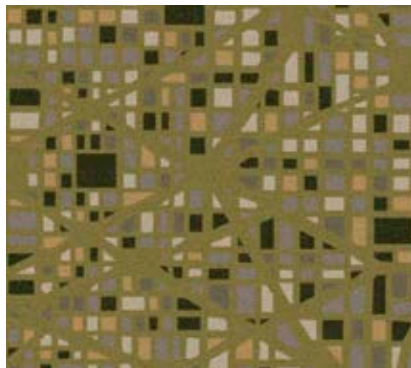
The collection is developed in ege's standard colour palettes making recolouration possible for all designs. The Almanac collection contains some standard patterns in which blend colours are used. Solid and blend colours are shown in colour codes beneath each pattern.

☐

Only patterns using solely solid colours (GB1-12) are available in the qualities Highline 630 and Highline Loop E16. Colour codes GB1-12 equal solid colours and colour code AC equals blend colours. If you require a pattern using blend colours in Highline 630 and Highline Loop E16, this will require a production trial run prior to final production. Patterns containing blend colours are marked with the symbol ☐, indicating that a trial run is necessary.

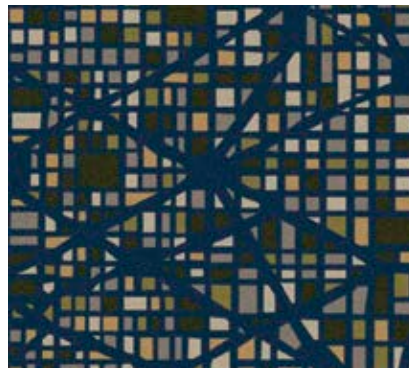
Recolour

Select design



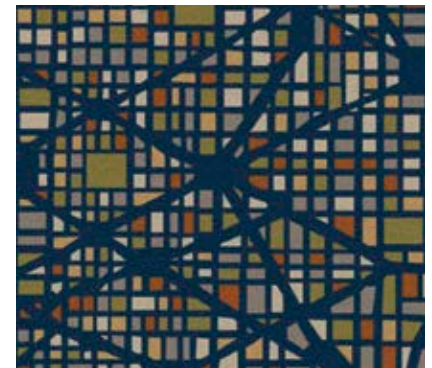
Change colour of background

(Choose between GB1-GB12)



Change pattern colour

(Choose between GB1-GB12 and AC colours)



Identification Characteristics	Standard	Highline 80/20 1900 WT	Highline 80/20 1400 WT	Highline 80/20 1100 WT
Structure	ISO 2424	Tufted cut pile	Tufted cut pile	Tufted cut pile
Gauge	ISO 2424	1/8	1/8	1/8
Pile	DIR 96/73, 96/74	80% wool, 20% polyamide	80% wool, 20% polyamide	80% wool, 20% polyamide
Coloration	-	Millitron	Millitron	Millitron
Backing	eTL	WT – Woven textile	WT – Woven textile	WT – Woven textile
Dimensions	ISO 3018	400 cm	400 cm	400 cm
Total thickness	ISO 1765	Approx. 10.0 mm	Approx. 8.5 mm	Approx. 8.0 mm
Surface pile thickness	ISO 1766	Approx. 7.5 mm	Approx. 6.0 mm	Approx. 5.0 mm
Tufts	ISO 1763	Approx. 167,000 per m ²	Approx. 137,000 per m ²	Approx. 120,000 per m ²
Total carpet weight	ISO 8543	Approx. 3,200 g/m ²	Approx. 2,800 g/m ²	Approx. 2,800 g/m ²
Pile yarn weight	eTL	1,900 g/m ²	1,400 g/m ²	1,100 g/m ²
Surface pile density	ISO 8543	Approx. 0.200 g/cm ³	Approx. 0.170 g/cm ³	Approx. 0.150 g/cm ³
edge soil protection	eTL	Yes	Yes	Yes
Moth-proofed	eTL	Yes	Yes	Yes
Performance Characteristics				
Performance areas	EN1307	Class 33 – Commercial – Heavy	Class 33 – Commercial – Heavy	Class 32 – Commercial – General
Castor chair suitability	EN 985	-	-	-
Suitability for use on stairs	EN 1963	-	Yes	Yes
Static control	eTL	Permanently antistatic	Permanently antistatic	Permanently antistatic
Acou. insu. from impact noise	EN ISO 717-2/eTL	36 dB	31 dB	29 dB
Acoustical absorption	ISO 354/eTL	0.30 aW	0.25 aW	0.25 aW
Suitability for under floor heating	ISO 8302	-	Yes	Yes
Safety and Environmental Characteristics				
Indoor air	Leed DIM Certificate BASTA Emissions dans l'air intérieur GECA	Green label plus No. 006 Registered A+/A+	Green label plus No. 006 Registered A+/A+	Green label plus No. 006 Registered A+/A+
Environmental profile	Bre Byggsvarudeklaration Environmental Product Declaration BREEAM-NOR	- - -	- BVD 3 - -	- BVD 3 - -
CE Labeling	EN 14041 Declaration of Performance	Certified DOP:9711-8C	Certified DOP:9711-8C	Certified DOP:9711-8B
Fire classifications	IMO DK, MK D, DIBT AbZ. no CH, VKF/AEAI EN13501-1 Euroclass	Certified Approved Z-156.601-479 C _f s1 C _f s1	Certified Approved Z-156.601-479 C _f s1 C _f s1	Certified Approved Z-156.601-479 B _f s1 B _f s1
Guides				
Installation & adhesive guide	DK, N, S, GB, D, F	DK, N, S, GB, D, F	DK, N, S, GB, D, F	DK, N, S, GB, D, F
Cleaning	DK, N, S, GB, D, F	DK, N, S, GB, D, F	DK, N, S, GB, D, F	DK, N, S, GB, D, F
Manufacturer Characteristics				
Quality management	ISO 9001	Audited and verified by Bureau Veritas Certification		
Environmental management	ISO 14001	Audited and verified by Bureau Veritas Certification		
Eco management	EMAS	Audited and verified by Bureau Veritas Certification		
Occupational Health & Safety	DS/OHSAS 18001	Audited and verified by Bureau Veritas Certification		
Carpet Recycling UK	Member	www.carpetrecyclinguk.com		

Highline 1100 WT	Highline 910 WT	Highline 750 WT	Highline 630 WT	Highline Loop E16 WT	Highline Loop WT
Tufted cut pile	Tufted cut pile	Tufted cut pile	Tufted cut pile	Tufted loop pile	Tufted loop pile
1/8	1/10	1/8	1/10	1/16	1/10
100% recycled polyamide	100% polyamide	100% polyamide	100% polyamide	100% polyamide	100% polyamide
Millitron	Millitron	Millitron	Millitron	Millitron	Millitron
WT – Woven textile	WT – Woven textile	WT – Woven textile	WT – Woven textile	WT – Woven textile	WT – Woven textile
400 cm	400 cm	400 cm	400 cm	400 cm	400 cm
Approx. 8.0 mm	Approx. 7.5 mm	Approx. 7.0 mm	Approx. 6.0 mm	Approx. 6.5 mm	Approx. 6.5 mm
Approx. 5.5 mm	Approx. 5.0 mm	Approx. 4.5 mm	Approx. 4.0 mm	Approx. 3.0 mm	Approx. 4.0 mm
Approx. 199,000 per m ²	Approx. 236,000 per m ²	Approx. 127,000 per m ²	Approx. 242,000 per m ²	Approx. 141,000 per m ²	Approx. 164,000 per m ²
Approx. 2,600 g/m ²	Approx. 2,400 g/m ²	Approx. 2,400 g/m ²	Approx. 2,000 g/m ²	Approx. 2,100 g/m ²	Approx. 2,300 g/m ²
1,100 g/m ²	910 g/m ²	760 g/m ²	630 g/m ²	850 g/m ²	680 g/m ²
Approx. 0.155 g/cm ³	Approx. 0.145 g/cm ³	Approx. 0.130 g/cm ³	Approx. 0.120 g/cm ³	Approx. 0.140 g/cm ³	Approx. 0.115 g/cm ³
Yes	Yes	Yes	Yes	Yes	Yes
-	-	-	-	-	-
Class 33 – Commercial – Heavy	Class 33 – Commercial – Heavy	Class 32 – Commercial - General	Class 33 – Commercial – Heavy	Class 33 – Commercial – Heavy	Class 33 – Commercial – Heavy
Continuous use	Continuous use	-	Continuous use	Continuous use	Continuous use
Yes	Yes	-	Yes	-	Yes
Permanently antistatic	Permanently antistatic	Permanently antistatic	Permanently antistatic	Permanently antistatic	Permanently antistatic
27 dB	28 dB	26 dB	25 dB	24 dB	24 dB
0.20 aW	0.20 aW	0.20 aW	0.20 aW	0.15 aW	0.20 aW
Yes	Yes	Yes	Yes	Yes	Yes
Green label plus No. 006 Registered A+/A+ Approved	Green label plus No. 006 Registered A+/A+ Approved	Green label plus No. 006 Registered A+/A+ Approved	Green label plus No. 006 Registered A+/A+ Approved	Green label plus No. 006 Registered A+/A+ Approved	Green label plus No. 006 Registered A+/A+ Approved
ENP434 BVD 3 EPD-ege-2013103-CBC1-EN Approved	- BVD 3 - -	ENP434 BVD 3 - Approved	ENP434 BVD 3 - Approved	- BVD 3 - -	- BVD 3 - -
Certified DOP:9711-4C	Certified DOP:9711-4C	Certified DOP:-9711-4C	Certified DOP:-9711-3C	Certified DOP:9711-14B	Certified DOP:9711-14B
- Approved Z-156.601-441 C _{II} s1 C _I s1	- Approved Z-156.601-441 C _{II} s1 C _I s1	- Approved Z-156.601-441 C _{II} s1 C _I s1	Certified Approved Z156.601-441 C _{II} s1 C _I s1	- Approved Z-156.601-441 B _{II} s1 B _I s1	- Approved Z-156.601-440 B _{II} s1 B _I s1
DK, N, S, GB, D, F	DK, N, S, GB, D, F	DK, N, S, GB, D, F	DK, N, S, GB, D, F	DK, N, S, GB, D, F	DK, N, S, GB, D, F
DK, N, S, GB, D, F	DK, N, S, GB, D, F	DK, N, S, GB, D, F	DK, N, S, GB, D, F	DK, N, S, GB, D, F	DK, N, S, GB, D, F
Audited and verified by Bureau Veritas Certification					
Audited and verified by Bureau Veritas Certification					
Audited and verified by Bureau Veritas Certification					
Audited and verified by Bureau Veritas Certification					
www.carpetrecyclinguk.com					



ege[®]

design · quality · respect

SUBSIDIARIES:

Denmark

China

France

Germany

Norway

Singapore

Sweden

United Arab Emirates

United Kingdom

For further contact information please visit
www.egecarpets.com