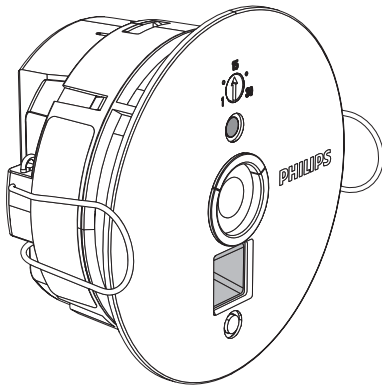


Soundlight Comfort

**PHILIPS**

**Ecophon**  
SAINT-GOBAIN

# Light Control guide for Soundlight Comfort Ceiling OccuSwitch DALI



**Control Guide**

## Content:

- 1** Ensure right physical install of all hardware / use remote control to commission the OccuSwitch
  - 2** Definitions of ceiling plan
  - 3** Calibrate light level
  - 4** Setting a mode
  - 5** Assign DALI function to every LED tile cluster
- Optional functions*
- 6** Set background level (optional, default 20%)
  - 7** Set power up state
  - 8** Set IR group to match system with remote control
  - 9** Movement test
  - 10** Back to basic setting
  - 11** Switch lights on/off



### Attention

Always keep pointed to OccuSwitch DALI sensor



### Attention

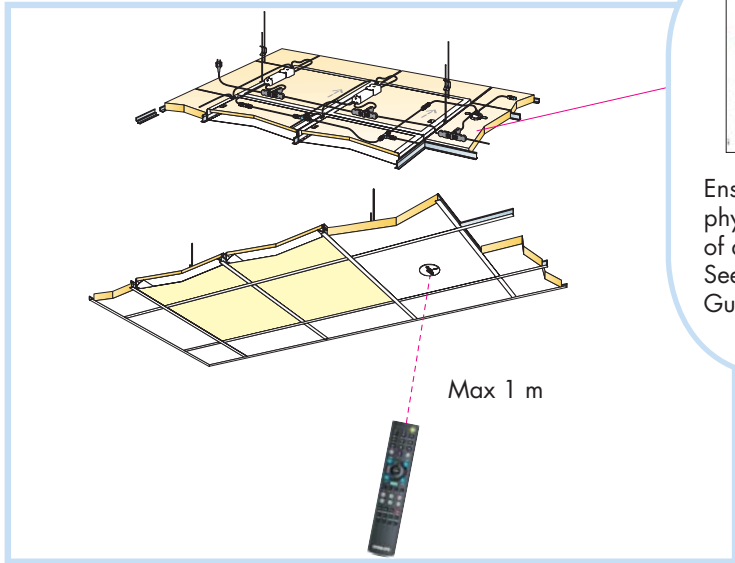
Lights will always flash once after every successful change



### Attention

Luxmeter needed for calibration of the installation

1



Ensure right physical install of all hardware. See Installation Guide IG324

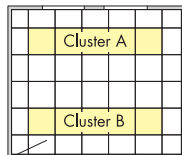
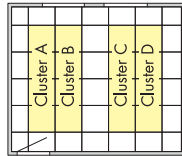


### Definitions of ceiling plan

2

Follow the lighting design for specified room type made by the lighting designer

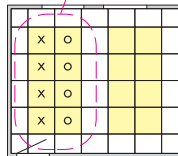
Examples:



*LED Tile cluster* = LED Tiles connected to same Control box

LED Tiles in cluster behaves equally

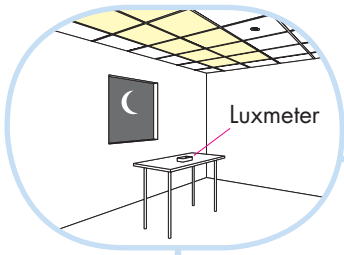
Group



x = Led Tile in assigned cluster  
o = Led Tile in assigned cluster

*Group* = one or several LED Tile cluster having the same Dali assignment. E.g "window" or "corridor"

## Calibrate the light level



3

**1** Push up or down to set the required light level

**2** Press save when the lux meter is showing the required lux level (eg 500 lux)



### Attention

Always calibrate the installation

Calibration must be done at night and office must be furnished

## Setting the modes

4

**1** Press mode

**2** Select 1-9 to select 10 press 1 and 0

**3** Press send

**(4)** (check mode)



Mode	Application
1	cell office m/s
2	open plan m/s
3	classroom m/s
4	open plan t/w
5	cell office t/w
6	corridor
7	toilets
8	meeting room
9	open plan t/w
10	custom

m/s = master / slave

t/w = task lighting / workspace lighting

More detailed information about Mode overview (default settings), see last page

## DALI function assignment

# 5

**1** Press *DALI*

**2** Wait for a cluster of LED Tiles to flash

If no flash occurs press *1* until a cluster of LED Tiles start flashing

**3** Select function for cluster of LED Tiles:  
*1*=window  
*2*=corridor  
*3*=additional presence  
*4*=additional absence

**4** Repeat for next flashing cluster of LED Tiles

(**5** Press *DALI* to abort)



When finished all luminaires flash once!

Optional functions **6-11**

## Change Background level

6

- 1 Press *background*
- 2 Select min - 70%
- 3 Press *send*



Mode	Application	Background Factory default
1	cell m/s	
2	open plan m/s	20% (all lights)*
3	classroom m/s	
4	open plan t/w	Preset 1**
5	cell t/w	
6	corridor	20% (all lights)*
7	toilets	Preset 1**
8	meeting room	
9	open plan t/w	20% (all lights)*
10	custom	Preset 1**

m/s = master / slave  
t/w = task lighting / workspace lighting

\* = default  
\*\* = workspace

## Change power-up state

7

- 1 Press *power up*
- 2 Select *on/off* status
- 3 Press *send*



Mode	Power-up (factory default)
1	off
2	off
3	off
4	off
5	off
6	on
7	on
8	off
9	on
10	on

## IR group addressing

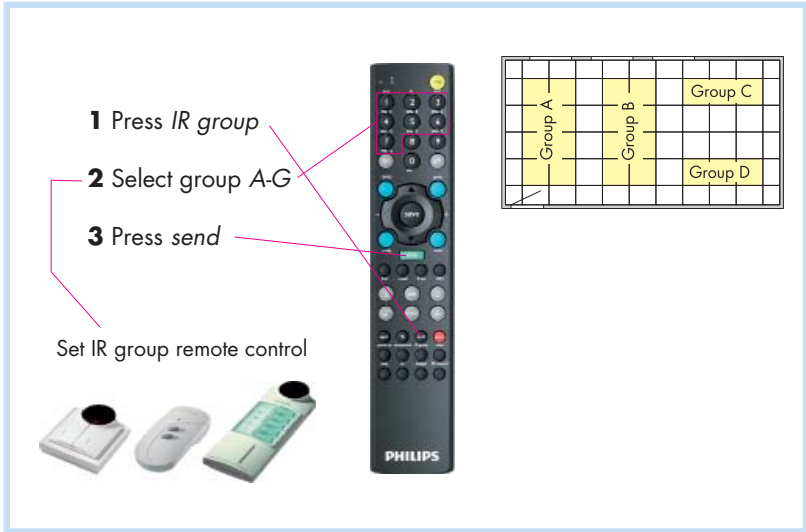
8

**1** Press *IR group*

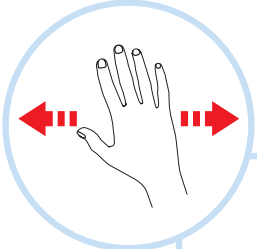


**2** Select group A-G

**3** Press *send*

Set IR group remote control



			Group C
Group A		Group B	
			Group D



## Movement test

9

**1** Press *test*  
OccuSwitch DALI will now operate 10x faster than normal.  
MD timer = 30 sec fixed

**2** Press *test* to stop  
(automatic stop after 60s no movement)



### Back to basic setting (mode 1)

10

1 Press *reset*

2 Press *send*



### Switch lights on or off

11

1 Press *on*

2 Press *off*



## Mode overview (default settings)

Mode	Application	Occupancy	Smart timer (minutes)	Back-ground period (minutes)	Daylight override	Daylight dependent regulation	Daylight dependent switching	Parallel link period (Advanced only)
1	Cell office (default)	Auto ON/OFF	10	0	Window only	Window/corridor	Window only	Local occupancy
2	Open plan office	Auto ON/OFF	10	120	Window only	Window/corridor	Window only	Local occupancy
3	Class room	ManualON/ autoOFF	10	0	N.a.	Window/corridor	Window/corridor	Local occupancy
4	Open plan*	Disabled	10	0	N.a.	Window/corridor	Window only	N.a.
5	Cell office*	Disabled	10	0	N.a.	Window/corridor	Window only	N.a.
6	Corridor	Auto ON/OFF	10	60	Window/corridor	Window/corridor	Window/corridor	Local occupancy
7	Toilets	Auto ON/OFF	0	15 (portal only)	Disabled	Disabled	Disabled	Local occupancy
8	Meeting room	ManualON/ autoOFF	10	0	Disabled	Window/corridor	Window only	Local occupancy
9	Open plan office**	Auto ON/OFF	10	Infinite	Window only	Window/corridor	Window only	Background lighting
10	custom	N.a.	N.a.	N.a.	N.a.	N.a.	N.a.	N.a.

\* Equals mode 1 and 2, but without MD active. Do not use these modes for normal applications.

\*\* This mode works differently in the advanced (LRM2080) version. Here the lights will switch off (the basic never switches off) when none of the advanced OccuSwitch DALI units in the parallel network detect movement. If one, or more, do detect movement all other units will go to background level.