

Multiple Layers of Foil, Wadding & Foam To Create
A Reflective Thermal Insulation Barrier



Eco-Quilt *Expert*

**Technical Data Sheet and Fitting/Installation
Guide.**

**Insulation Fitting Instructions for
Walls**



Ecohome-Insulation.com

Tel: 0844 991 9949

E-Mail: Sales@Ecohome-Insulation.com

Eco-Quilt *Expert*

Contents & Introduction

[Click Here For Timber Frame](#)

[Click Here For Dry Lining/Solid Wall.](#)

Introduction

General Fixing Instructions

Installation of EcoQuilt for Timber Frame and Masonry Wall Applications and additional insulation products should be in accordance with the fixing instructions and current good building practice.

When the EcoQuilt is cut to fit around openings, care should be taken to minimise gaps. EcoQuilt can be cut easily using sharp scissors or a knife.

The surfaces of masonry walls should be sound and free from loose material; large projections should be removed and holes filled and levelled.

The depth of timber battens will determine the air space achieved on either side of the EcoQuilt, Ecohome recommend 25mm battens.

All joints and perforations in the products must be securely sealed with ThermoSeal Foil Tape

Insulation for use in Walls



Ecohome-Insulation.com

Tel: **0844 991 9949**

E-Mail: **Sales@Ecohome-Insulation.com**

Eco-Quilt *Expert*

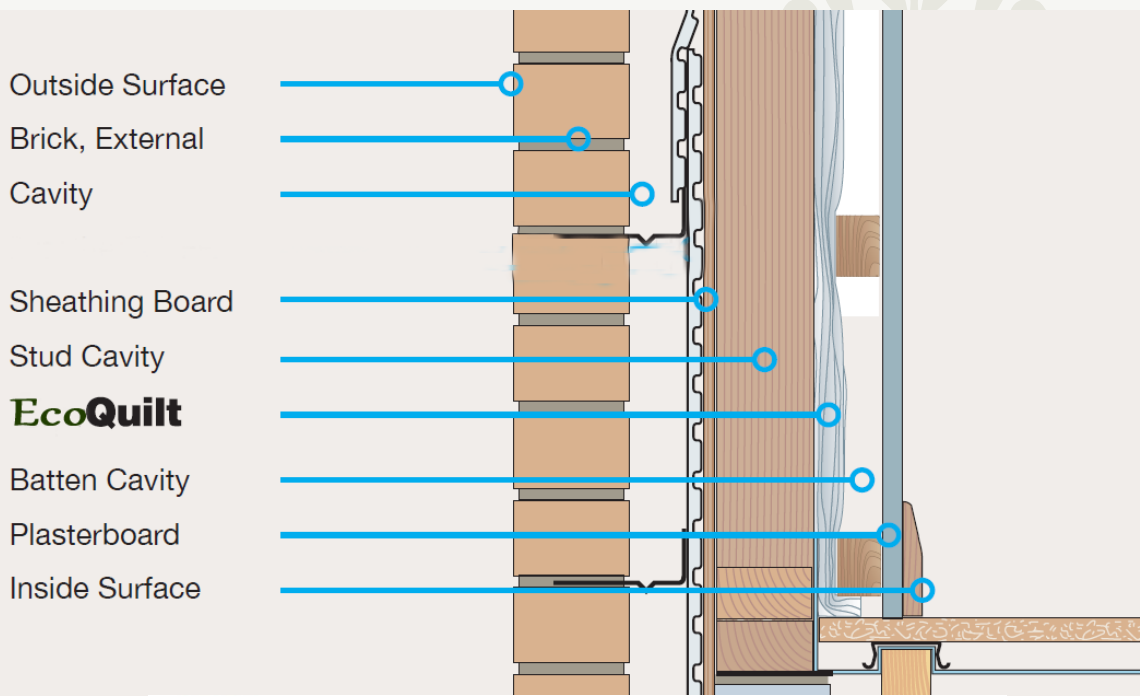
Timber Frame Wall

Fixing Instructions

EcoQuilt is applied directly from the roll either vertically or horizontally depending on the wall height, pulled tight and stapled onto the timber studs at minimum 300mm centres. EcoQuilt should be overlapped at each joint by approx. 50mm and stapled onto the battens, the joints should be sealed using 75mm YBS Foil Tape.

Vertical counter battens, recommended 25mm by 38mm are fixed to the wall. Battens must always be placed at the top and bottom of the wall and around the perimeter of doors and windows.

The plasterboard is fixed over the materials and onto the battens in the usual manner.



Ecohome-Insulation.com

Tel: 0844 991 9949

E-Mail: Sales@Ecohome-Insulation.com

Eco-Quilt *Expert*

Dry Lining

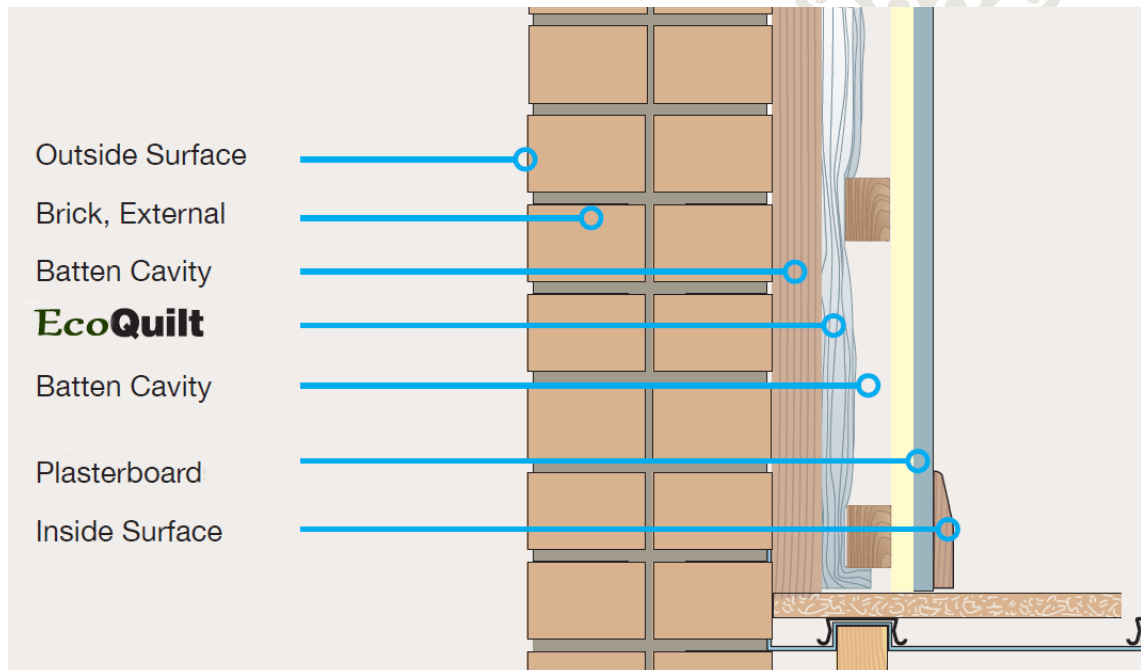
Fixing Instructions

Vertical battens, minimum 19mm by 38mm battens are fixed to the wall at 400mm centres. Battens must always be placed at the top and bottom of the wall and around the perimeter of doors and windows.

EcoQuilt is applied directly from the roll either vertically or horizontally depending on the wall height, pulled tight and stapled onto the battens at minimum 300mm centres.

EcoQuilt should be overlapped at each joint by approx. 50mm and stapled onto the battens, the joints should be sealed using ThermoSeal Foil Tape. Counter battens are fixed to the wall battens through the material at 400mm centres.

The plasterboard is fixed over the EcoQuilt and onto the battens in the usual manner.



Ecohome-Insulation.com

Tel: 0844 991 9949

E-Mail: Sales@Ecohome-Insulation.com

Eco-Quilt *Expert*

Technical Data for EcoQuilt Multi-Foil Insulation.

R-Value Thermal Rating	2.272 m ² ·K/W
Emissivity	0.35
Number of Layers	6 Layers of Thermo-Wadding, Breather Foam, and Reflective Foil
Roll Length	10m
Roll Width(s)	750mm / 75cm 1500mm / 150cm
Thickness	15mm loose 5mm when Fitted/Stapled
Fibre Glass/ Loft Wool Equivalent Thickness	120mm



Ecohome-Insulation.com

Tel: **0844 991 9949**

E-Mail: **Sales@Ecohome-Insulation.com**