

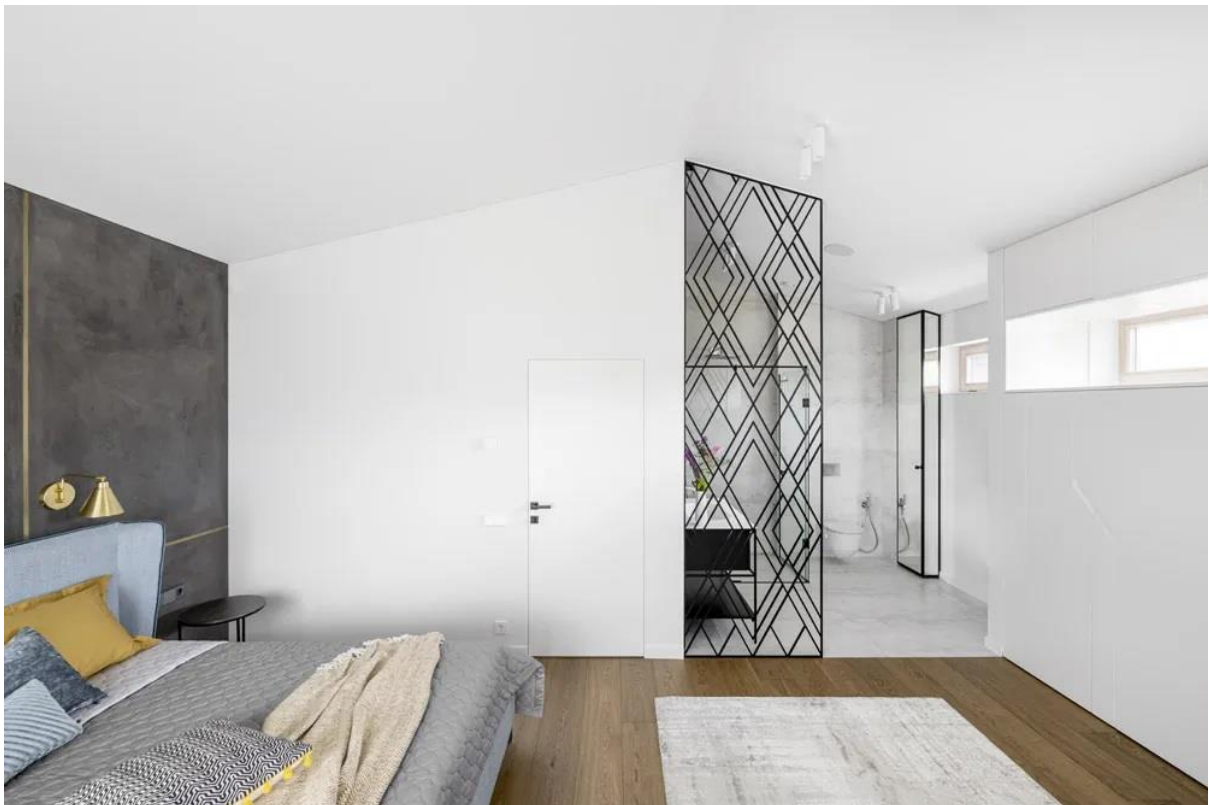
NORDIC STYLE- SIMPLE LINES AND LIGHT SPACES

With the aim of making a somewhat dated house welcoming and comfortable for a young family from Vilnius, the architect Ieva Prunskaitė of the Prusta studio redesigned the interior. The minimal, clean design combines functionality with beauty. Its focus is on simple lines and light spaces, devoid of clutter. Wood, plaster and cement are the three elements that are used throughout the house.



The predominantly white walls with ECLISSE Syntesis Flush Hinged white doors contrast beautifully with the wooden flooring. There are also wooden accents across the white kitchen cabinets and wooden panelling defining storage areas and a cloakroom between the main door and the living room.

The interior is also interspersed with accents of grey and black in the form of the black marble worktop and black chairs in the kitchen, the minimalist wood burning stove, grey accent wall and grey sofa in the sitting room and a decorative black metal screen with a geometric design separating the master bedroom with the ensuite.



The minimalist style of the ECLISSE Syntesis Flush Hinged doors integrate perfectly into this interior being almost invisible, whilst being accented with sleek black handles echoing the colour scheme throughout.



The ECLISSE Syntesis® Flush Hinged Door is part of the Syntesis® Flush Collection. This is a range of flush or architrave free products that work in harmony with each other. The collection features a, the concealed hinged door frame (available as a door set or frame only), pocket door system without jambs or architrave and a flush skirting board adapter. The emphasis is on uninterrupted, clean lines for an interior without fuss, where less is more.

Architect: Prusta studio

Product: [ECLISSE Syntesis® Flush Hinged Door](#)