



t.i. dynamic facades

be different. be recognised. be innovative

בניין המדרש
בנסת יחזקאל



t.i. dynamic facades

be different. be recognised. be innovative

T.I. Total Stone

T.I. Dynamic facades offer various stone cladding systems so that you are guaranteed to find the correct stone cladding solution for your project.

Total Stone is a natural stone rainscreen cladding panel. The stone type will determine the panel thickness, limestone & granite are typically 20 or 30mm thick. Sandstones are 40, 50 or 60mm thick. Stones are sourced from the UK and Europe.





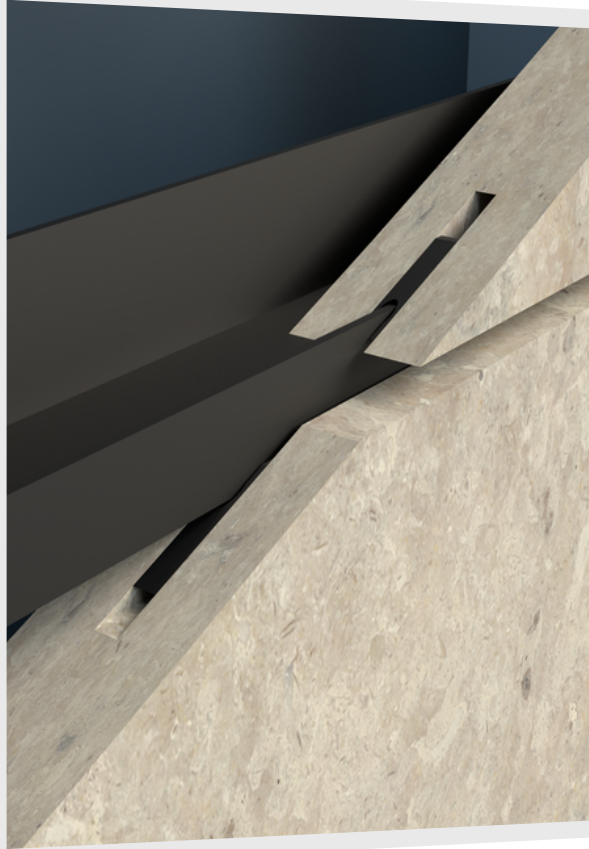
t.i. dynamic facades

be different. be recognised. be innovative

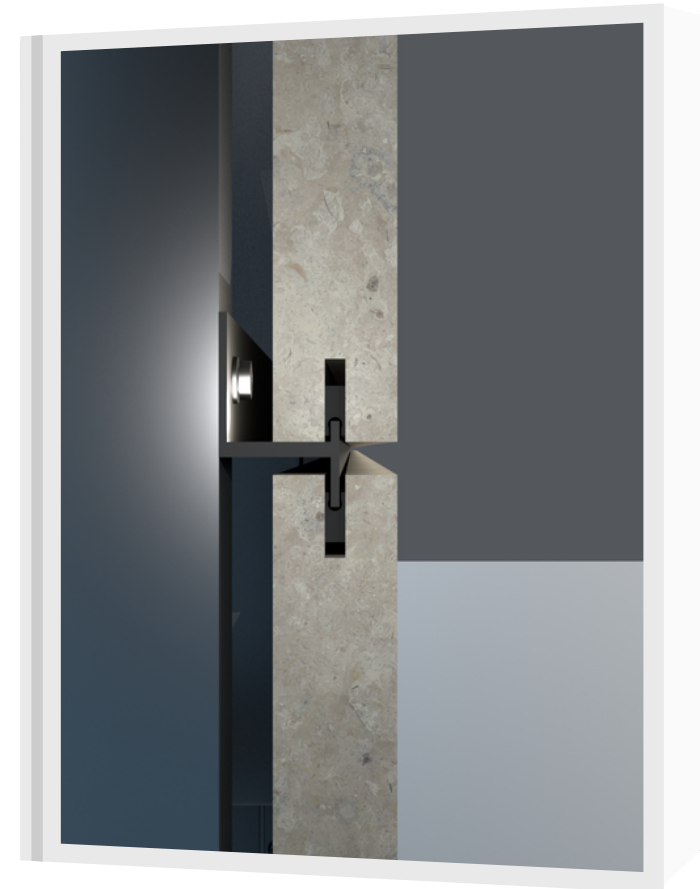
Fixing Methods

Kerf

The kerf fixing is a gravity based fixing method. Total Stone panels arrive at site with a 5mm wide x 20mm deep channel grooved into the top and bottom edges, the channels are retained mechanically with our TI Tracking+ horizontal rail carrier system.



The panels are lifted in and dropped into place. Each panel can be individually installed or removed for access without having to interfere with surround panels making the solution ideal for mast climbers & scaffolding access.





t.i. dynamic facades

be different. be recognised. be innovative

Fixing Methods

Undercut Anchor

Used for portrait layout panels where rail centres need to be extended greater than 600mm.

This is used to support soffit panels interfacing with the kerf system.

Panels come to site predrilled with an undercut hole to allow an anchor to expand into when fixed on site with hanging clasps. The clasps then allow the panels to be secured to a horizontal carrier rail.





t.i. dynamic facades

be different. be recognised. be innovative

Key Points

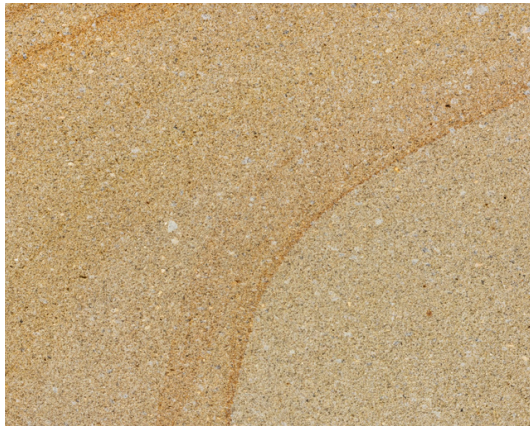
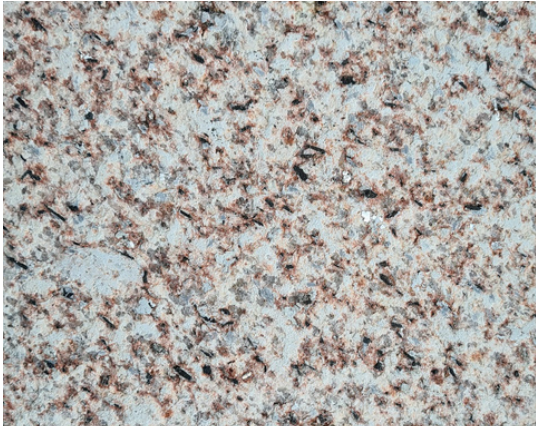
- System weight 54kg/m² at 20mm thick, 80kg/m² at 30mm thick & 108kg/m² at 40mm thick.
- Max rail centres 600mm horizontally (most economical)
- 10-12-week lead times
- A1 fire rating – can be used on building higher than 11m in Scotland and 18m in England
- Substructure centres set upto standard 600mm
- Fast track construction
- Weight falls within 2 man lift H&S parameters.
- Can be installed any time of year, isn't weather dependant.
- Support systems can be gridded out and installed ahead of the stones arrival to site.
- Individual panels on the kerf system can be installed/removed at random locations.
- Can be installed top down, ideal for scaffolding and mast climber access.
- Large range of granite, limestones & sandstones available in various finishes (such as polished, honed, sandblasted, flamed)
- Flexible sizes Heights 150-600mm Sizes 100-1200mm tested. Larger available on request
- Horizontal joint sizes 10mm. Vertical joint sizes 6mm, 8mm & 10mm.
- Corners achieved through butt fit panels or mitred edges.
-



t.i. dynamic facades

be different. be recognised. be innovative

Swatches



Glasgow

Westview House
Gartferry Road
Glasgow
G69 0JE



t.i. dynamic facades

be different. be recognised. be innovative

London

8 St James's Square
St James
London
SW1 4JU



t.i. dynamic facades

be different. be recognised. be innovative

