

Dutypoint

Systems



Heat Interface Units



High quality heating
and hot water control



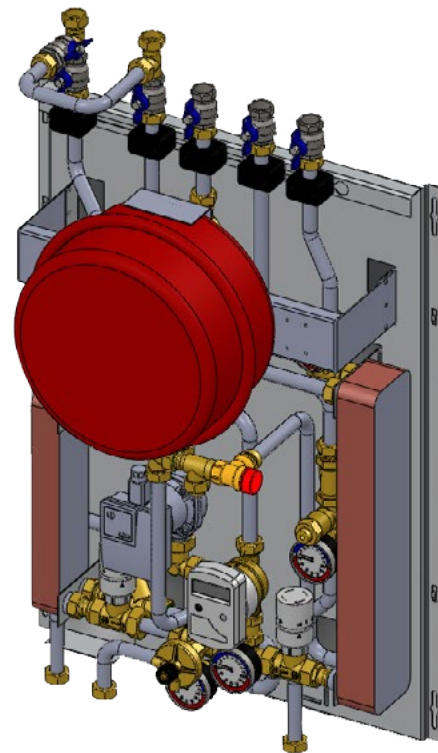
One of the primary considerations in modern construction is conserving energy through the use of energy-efficient plant. In Dutypoint Heat Interface Units (HIU's), hot water produced by a centralised district heating plant (generally powered by renewable energy sources) is transferred via integral heat exchangers, to provide on-demand heating and hot water. Dutypoint Heat Interface Units deliver eco-friendly temperature control to the building occupants.

Heat Interface Units give building services engineers the option to design multi-dwelling complexes with district heating systems, which can use energy sources such as CHP, solar or heat pumps. This can be done without the constraints of attempting to equip each individual dwelling with its own renewable energy source.

Domestic hot water provided by a plate heat exchanger is provided rapidly, ensuring a high level of comfort for building occupants.

Dutypoint offer a comprehensive range of compact, efficient Heat Interface Units with either thermostatic or hydraulic control, covering requirements for both domestic hot water supply and space heating (direct or indirect).

Units can be configured for conventional radiator circuits or under-floor heating applications. Careful placement of components allows a compact design that facilitates easy installation and operation without restricting engineer access during essential maintenance.



Standard features

- Stainless steel insulated pipework
- ¾" connections
- Stainless steel heat exchanger(s)
- Integral flow limiter and strainers
- Pressure tested prior to despatch
- Expansion vessel*
- A-rated variable speed circulator pump*

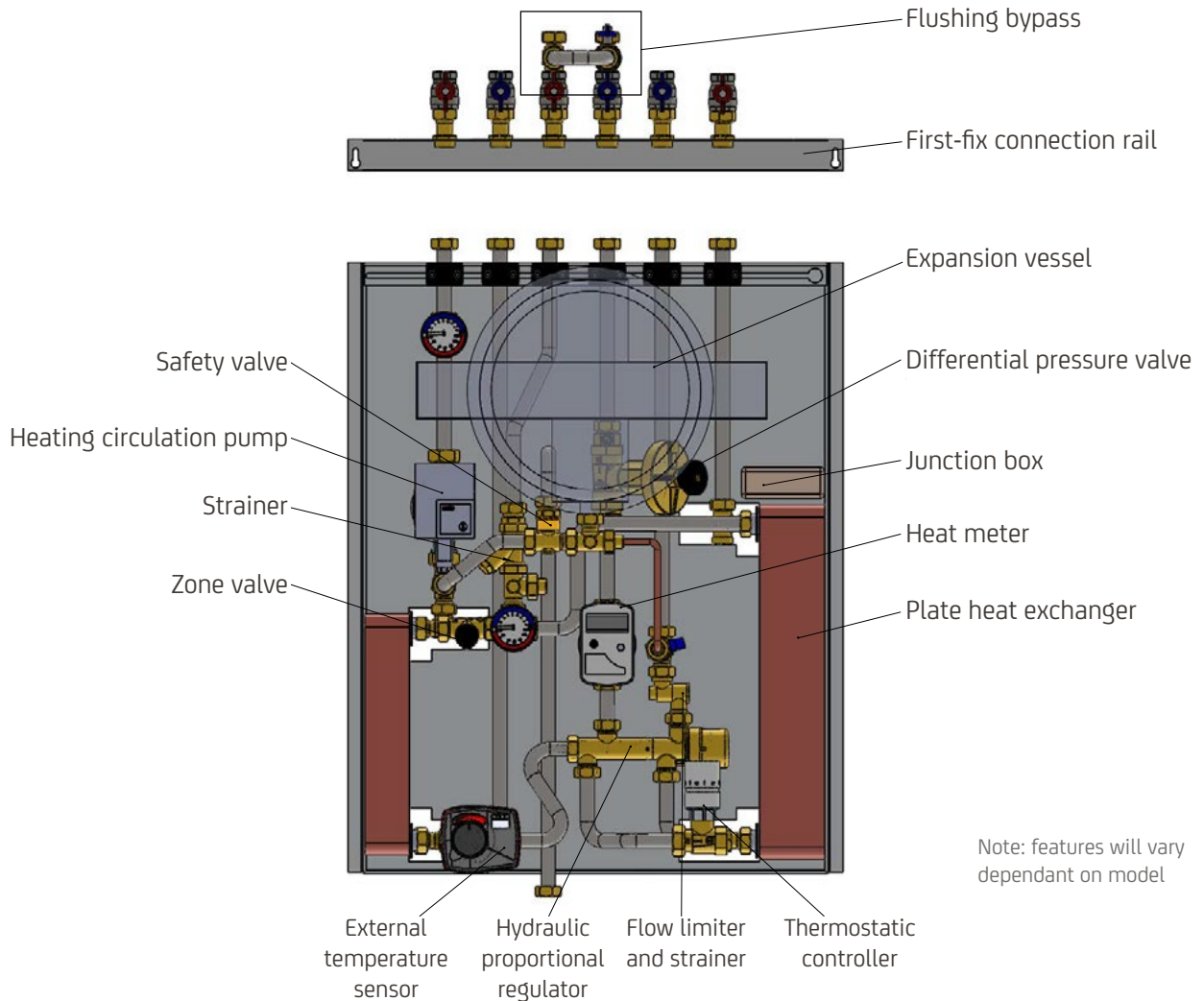
*Indirect models only

Optional extras

- Water meter
- Ultrasonic heat meter
- Lacquered steel cover
- Room sensor
- External temperature compensation control
- First-fix connection rail
- Flushing bypass
- Top or bottom connections
- Connections for underfloor heating pipework

Specification - standard models

Domestic hot water capacity	33, 50, 65kW
Heating capacity	< 20kW
Maximum working pressure (primary)	10 Bar
Maximum working pressure (secondary, heating)	3 Bar
Minimum supply pressure (secondary DHW)	2 Bar
Maximum working temperature	95°C
Expansion vessel	12 litre
Connections	¾" BSP
Electrical supply	230/1/50





Direct Heating, Thermostatic Control

- Direct connection between primary plant system and secondary system
- Domestic hot water provided by plate heat exchanger
- Specially designed thermostatic control



Direct Heating, Hydraulic Control

- Direct connection between primary plant system and secondary system
- Domestic hot water provided by plate heat exchanger
- Hydraulic control provides constant domestic hot water temperature



Indirect Heating, Hydraulic Control

- Hydronic separation between primary plant system and secondary system
- Heating and domestic hot water provided by plate heat exchanger
- Hydraulic control provides constant domestic hot water temperature
- 12 litre expansion vessel
- Exceptional hot water flow rates

