

Uniclass L682/3
CI/SfB  Vv

**Dulux**  
**TRADE**  
*Trade & Trusted*

“We had to meet the exact specifications, so it was great that we could trust the Weathershield coating.”

**Trusted** by Peter McMullen,  
*Chairman of BSPS and Project Manager*



**WEATHERSHIELD**



## CASE STUDY:

### London Business School

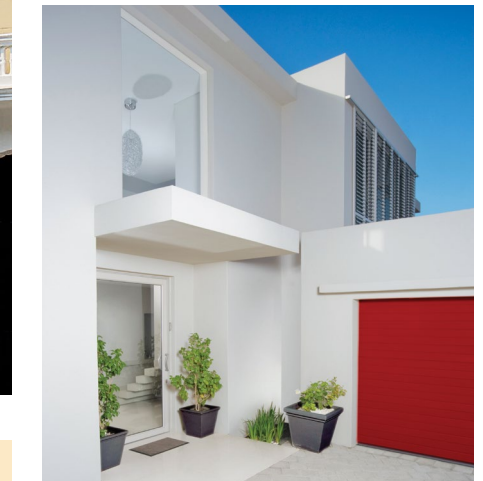
Graced by elegant pointed cupolas and Corinthian columns, London Business School lies behind one of London's most beautiful and historic façades, designed by John Nash. Naturally it is a Grade I listed building, and must be maintained according to strict guidelines.

The owners require an exterior finish that is sure to keep its clean, fresh and authentic appearance, so they asked main contractor BPS Ltd to use **Dulux Trade Weathershield** Smooth Masonry Gloss in Regent's Park Cream. The colour is inspired by the fabulous Regency buildings on the edge of the world-famous park, so what could be more appropriate?

**Weathershield** Smooth Masonry Gloss is a high quality emulsion with a formulation that discourages dirt retention and an added fungicide to inhibit mould growth on the paint film.

**"The quality of the finished result is clear for all to see."**

*Trusted by Peter McMullen,  
Chairman of BPS and Project Manager*



# Our good name protects yours

You can always trust **Weathershield** for outstanding protection. Masonry, trim and outdoor wood will start looking good and stay that way, year after year after year. The ‘four seasons in a day’ nature of this country’s climate can be uniquely challenging for the exterior of a building, but **Weathershield** masonry coatings, trim paints and woodcare products are specifically made to withstand the worst of the British weather (as well as its occasional best).

**Weathershield** is good for your reputation too. Each formulation featured here has been developed to provide a superb and enduring finish, and there’s nothing better than a pristine, beautifully decorated exterior for enhancing your good name. First impressions count.

The range can also help you to make a name for yourself in terms of sustainability. Extending maintenance cycles does not only help to control costs, it can also reduce the building’s environmental impact over its lifetime.

In short, you can specify **Weathershield** with complete confidence. And you can depend on the specialist experience and expertise of the **Dulux Trade** technical support team for advice on the most appropriate and cost-effective solutions.

## CONTENTS

Introduction	3
Sustainability	4
Maintenance cycles	6
Exterior trim system	7
Weathershield Smooth Masonry	8
Weathershield Maximum Exposure	10
Weathershield All Seasons Masonry	12
Weathershield Textured Masonry	14
Weathershield Exterior Gloss System	16
Quick Drying Exterior Gloss	18
Quick Drying Exterior Satin	20
Weathershield Ultimate Woodstain	22
Weathershield Ultimate Opaque	24
Dulux Trade Protective Woodstain	26
Weathershield Aquatech Woodstain	28
Weathershield Aquatech Opaque	29
Colour	30
Specifier support	32
Preparation	34

# Building a sustainable future and having a positive impact

Our vision is to lead the paint industry into a more sustainable future and have a positive impact on the planet and on society. Our ambitions set a new benchmark we hope others will try to follow.

## Our ambitions

To clarify our commitment to building a sustainable future and making a positive impact, we have expressed it in a triangle of challenging ambitions.

These are our economic, environmental and social goals, setting a clear agenda and direction for our whole business.

Economic, environmental and social, addressing the issues and impacts most critical to our industry, we seek to work in partnership with our suppliers, our customers and leading edge thinkers to shape the paint market of the future.



“As a brand leader we have a critical role to play in reducing the environmental footprint associated with the use of our products and delivering innovations that allow our customers to work more sustainably”

*Susan Kendall,  
UK & Ireland Sustainability  
Director, ICI Paints  
AkzoNobel*



# Weathershield and sustainability

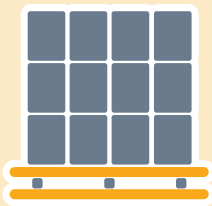
Choosing **Weathershield** masonry coatings, trim paints and woodcare products can help to reduce the project's lifetime carbon footprint, because longer lasting protection means less frequent maintenance and redecoration, both of which have an environmental impact.

**Weathershield's** outstanding opacity also means that smaller quantities of each coating need to be used on the project, so ultimately fewer resources and raw materials are used in its manufacture and transport. And, as with all **Dulux Trade** products, **Weathershield** formulations are assessed using the **Environmental Impact Analyser**. These findings help **AkzoNobel** to keep developing new formulations and processes to minimise the environmental impact of every product.



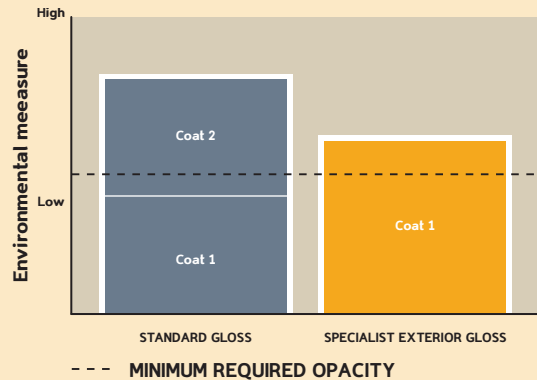
## How long does it last?

For instance, **Weathershield** Exterior High Gloss extends maintenance cycles to 8 years as opposed to the usual 4 achieved with conventional gloss. This longer lasting finish means that less frequent redecoration will be required.



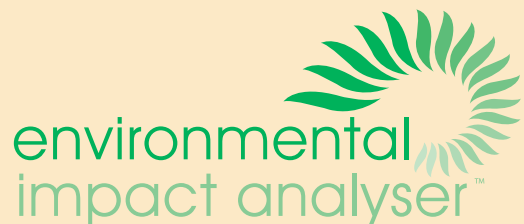
## How much do you need?

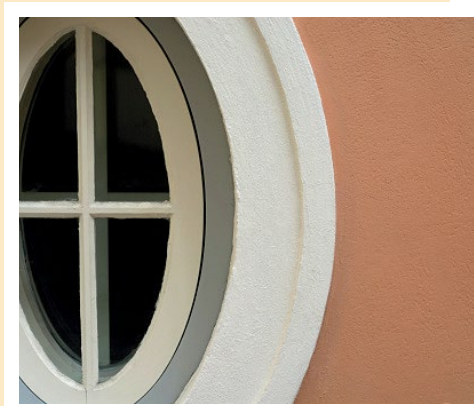
In the case of **Weathershield** Exterior High Gloss, a smooth surface can be covered at 18m<sup>2</sup> per litre, minimising the amount of material required to deliver an excellent result.



## What's in it?

Our raw materials are assessed in line with the **Environmental Impact Analyser**, and all the research resources of **AkzoNobel** are focused on finding ever-more environmentally friendly formulations and processes.





# Rely on Weathershield to help extend maintenance cycles

**Weathershield** products are specially formulated to offer long-term cost savings by extending maintenance cycles. With **Weathershield** masonry coatings you can expect the finish to keep its superb appearance and protect the surface from all weather conditions and environmental threats for up to 15 years. The **Weathershield** high gloss system can offer up to 8 years protection for exterior trim. And, whether you choose **Weathershield** Ultimate Woodstain or Opaque, it will protect exterior joinery and cladding for up to 10 years.

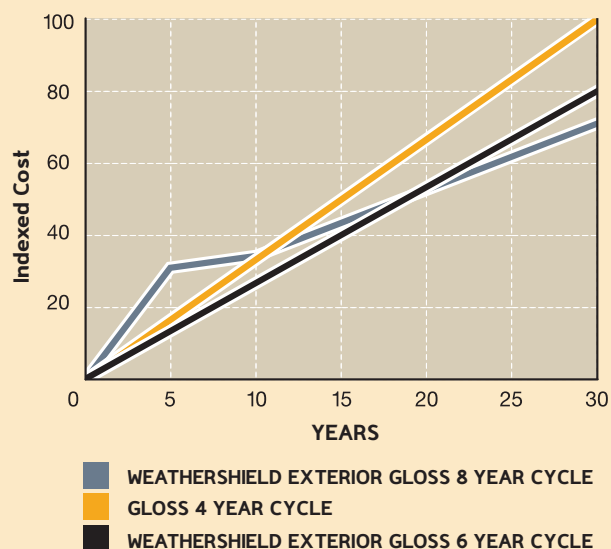
## Whole life cost considerations

ICI Paints AkzoNobel considers the whole life costs of buildings when assessing maintenance needs and paint systems, taking into account factors such as durability, sustainability and prior-to-paint repairs.

As the chart shows, choosing products with shorter effective lifespans can be the most expensive option overall. Compared to standard high gloss, **Weathershield** Exterior Gloss can extend the maintenance cycle from 4 to 8 years, delivering clearly the best value as a result. By considering all the cost factors we can help you make the best value choice for your building:

- Products and materials
- Labour
- Access
- Preparation levels

The simple fact is **Weathershield** offers the durability that means costs such as these are incurred less often.



# Specify the right exterior trim system at a glance

Are you dealing with bare wood or a previously painted surface? Do you and your contractor prefer to work with solvent-based or water-based systems? Whatever the answer, there's a combination of **Dulux Trade Weathershield** basecoat, undercoat and topcoat that will suit your project perfectly.

Product	Water Based / Solvent Based	System			Durability	Basecoat		
	Solvent-Based (Water-Based Primer)	1 COAT <b>Weathershield Preservative Primer</b> <sup>†</sup> (PP#)	+	2 COATS Exterior Undercoat	+	1 COAT Exterior High Gloss	Up to 8 years	
		1 COAT Exterior Undercoat	+	1 COAT Exterior High Gloss				
	Water-Based	1 COAT <b>Weathershield Aquatech Preservative Basecoat</b> <sup>†</sup> (PP#)	+	1 COAT Quick Drying Exterior Undercoat	+	2 COATS Quick Drying Exterior Gloss	Up to 6 years	
		1 COAT Quick Drying Undercoat	+	1 COAT Quick Drying Exterior Gloss				
	Water-Based	1 COAT <b>Weathershield Aquatech Preservative Basecoat</b> <sup>†</sup> (PP#)	+	1 COAT Quick Drying Exterior Undercoat	+	2 COATS Quick Drying Exterior Satin	Up to 6 years	
		1 COAT Quick Drying Undercoat	+	1 COAT Quick Drying Exterior Satin				

Key:  New Work  Maintenance/Re-decoration

When using a gloss or satin, you may require further coats to achieve the best finish. If you are using a very deep colour or if you require an extra glossy finish then we advise that you apply an additional coat of gloss or satin.

#See back page for details.



# Weathershield Smooth Masonry Paint

This formulation continues to be successfully tried, tested and trusted in real time, real world conditions. **Weathershield** Smooth Masonry Paint protects and enhances exceptionally, for up to 15 years.



<b>Touch dry</b>	30 minutes, dependent on temperature and humidity
<b>Recoatable</b>	After 2-4 hours. Times will be significantly longer in cold, damp conditions
<b>Coverage</b>	Smooth surface 14-16m <sup>2</sup> per litre
<b>Colour Range</b>	PBW, Magnolia, 5 ready mixed colours and 420 lightfast optimised tinted colours from the <b>Weathershield</b> fandeck as well as a range of NCS2, RAL and BS colours

## Water-based matt finish

- Up to 15 years protection for exterior masonry, certified by the BBA
- Shower resistant normally in 30 minutes
- Anti-carbonation properties reduce CO<sub>2</sub> attack – good for use in high pollution areas
- Contains algicides and fungicides to help resist biological attack on the film
- Helps to counteract interstitial condensation and prevents liquid surface water penetration
- Contains a unique acrylic resin for optimum protection

## Up to 15 years protection

**Weathershield** products undergo site trials and weathering tests that place the product under the most severe conditions. In addition to our own testing procedures, **Weathershield** Smooth Masonry Paint has been tested and certified by the BBA (British Board of Agreement) who certify that **Weathershield** Smooth Masonry in normal conditions, with two coats properly applied in accordance with the instructions, will have good colour stability\* and will perform satisfactorily for up to 15 years.

\*Please refer to the **Weathershield** fan deck for full details of the colours that are optimised for light fastness.





# Weathershield Maximum Exposure Smooth Masonry Paint

The toughest conditions are precisely what Maximum Exposure excels in beating. It has the durability to deliver lasting protection in the most extreme environments.



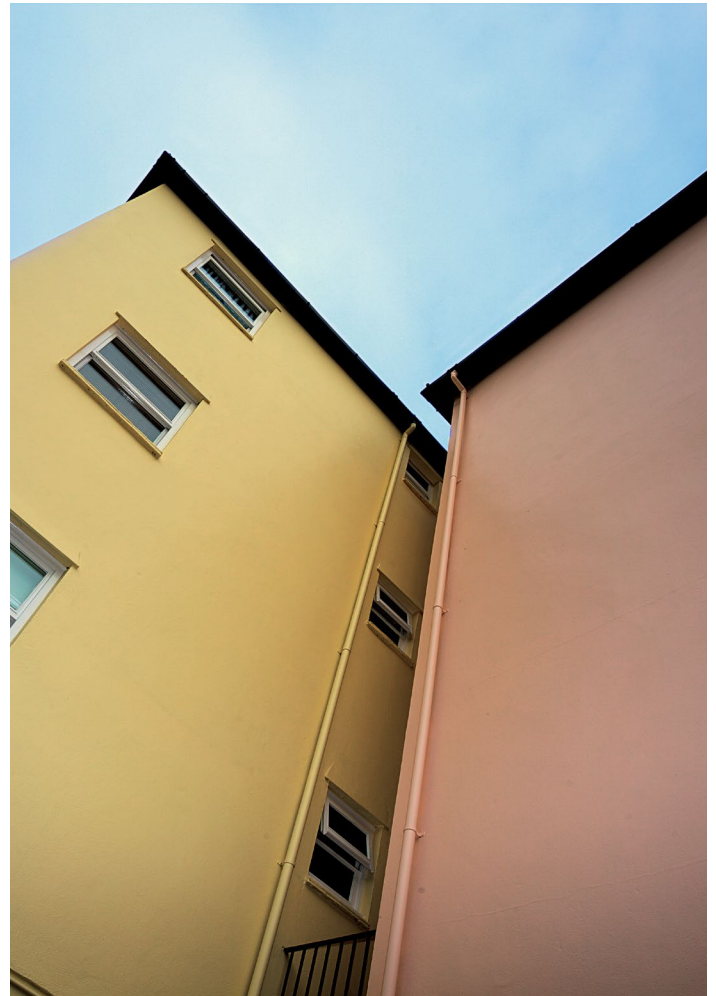
<b>Touch dry</b>	30 minutes, dependent on temperature and humidity
<b>Recoatable</b>	After 2-4 hours.
<b>Coverage</b>	Smooth surfaces 12-14m <sup>2</sup> per litre
<b>Colour Range</b>	PBW and 420 lightfast optimised tinted colours from the Weathershield fandeck as well as a range of NCS2, RAL and BS colours

## Water-based matt finish

- 5x more flexible than standard **Dulux Trade** masonry paints, preventing flaking and cracking
- Protects exterior masonry for up to 15 years
- Works by bridging hairline surface cracks and keeping them covered
- Dries to a shower resistant finish normally in just 15 minutes
- Prevents ingress of water into the substrate, preventing damp and fungus forming
- Increased adhesion and salt and chemical resistance, improving long term aesthetics
- Excellent spreading rate of up to 14m<sup>2</sup> per litre

## Formulated for extreme performance

**Weathershield** Maximum Exposure has been specially formulated to have excellent flexibility and adhesion to cope with the extreme weather conditions. The formulation is also 5x more flexible than standard **Dulux Trade** smooth masonry paints, to provide unbroken protection as substrates contract and expand through extremes of weather. It also has superior resistance to salt spray.





***“The environment in this particular area can be very unforgiving, but Weathershield is definitely tough enough to withstand it.”***

*Trusted by Kevin Nankervis,  
Decorator*

## **CASE STUDY:**

### **Admirals Quay, Falmouth**

Gales, salt sea spray, fierce sunlight, algae... This high end housing development's beautiful and spectacular location on the Cornish coast has just one drawback: all-year-round-exposure to nature at its most hostile.

Needing to protect their homes from the elements and minimise maintenance, the Admirals Quay property owners' management company decided to split the site into four zones and give one zone a facelift each year. For the past four years, St Ives-based Kevin Nankervis has been the chosen contractor.

In consultation with **Dulux Trade** Specification Account Manager Steve Oakley he chose two **Weathershield** products: Maximum Exposure Smooth Masonry Paint and the Exterior High Gloss system, knowing that their combination of durability and flexibility would keep his work looking good for years to come.

Kevin Nankervis comments: “As the products are very flexible, they don't go brittle and crack in strong sunlight. Instead they expand and contract as the temperature rises and cools.”

# Weathershield All Seasons Masonry Paint

The easy answer in difficult climates. **Weathershield All Seasons** Masonry Paint is ideal for use all year round on exterior walls, including walls previously painted with solvent or water-based coatings.



<b>Touch dry</b>	30 minutes, dependent on temperature and humidity & shower resistant normally in 15 minutes
<b>Recoatable</b>	After 1-2 hours.
<b>Coverage</b>	Smooth surfaces 14-16m <sup>2</sup> per litre
<b>Colour Range</b>	PBW, Magnolia, Black and 225 lightfast optimised tinted colours from the <b>Weathershield</b> fandeck as well as a range of NCS2, RAL and BS colours

## Solvent-based matt finish

- Up to 15 years protection for exterior masonry
- Shower resistant normally in 15 minutes
- Can be applied in cold, damp conditions – ideal for out of season decorating or refurbishment
- Contains anti-carbonation properties to protect the substrate from CO<sub>2</sub> attack – good for use in high pollution areas
- Provides excellent chalking resistance
- Less prone to yellowing
- Moisture vapour permeable

## Protects masonry for up to 15 years

Proven to perform and protect for up to 15 years, and shower-resistant in 15 minutes, **Weathershield All Seasons** Masonry Paint is the premier choice wherever application has to be carried out in cold, damp conditions – ideal for out of season decorating or refurbishment. It contains anti-carbonation properties to protect the substrate from CO<sub>2</sub> attack, which makes it excellent for use in high pollution areas.



## CASE STUDY:

### Withernsea Lighthouse

Withernsea Lighthouse is a local landmark and East Yorkshire tourist attraction, which operates as a museum nowadays. When the 127 foot tower's exterior was last due for its ten yearly repainting, lighthouse manager Tony Simpson appointed local firm D&R Dawson Decorators: old hands whose experience of working on the building goes back to 1994.

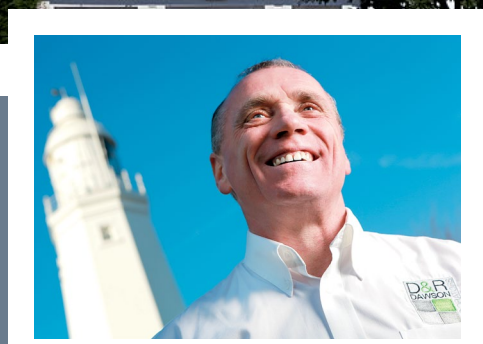
For this daunting project D&R Dawson partner Rob Dawson had no hesitation in recommending **Dulux Trade Weathershield All Seasons** Masonry Paint.

As well as delivering a flexible smooth finish that is tough enough to provide up to 15 years protection, **Weathershield All Seasons** contains fungicide and algicide to keep the paint film looking good for longer. It is also shower resistant normally in just 15 minutes after application – ideal here, because the painting had to be done in rainy mid-Spring to avoid interrupting the museum's busy Summer season.

Rob Dawson, partner in D&R Dawson comments: "Showers forced us to down tools and stop working mid-application several times... on each occasion, when we returned we found that the coating wasn't affected at all."

"I was impressed at just how easy the Weathershield coating was to apply..."

*Trusted by Rob Dawson,  
Partner, D&R Dawson*



# Weathershield Textured Masonry Paint

All ideal formulation for older properties with flawed surfaces, **Weathershield** Textured Masonry Paint creates an attractive fine granular finish that effectively bridges small cracks and surface imperfections.



<b>Touch dry</b>	1-2 hours, dependent on temperature and humidity
<b>Recoatable</b>	After 2-4 hours. These times will be significantly longer in cold, damp conditions
<b>Coverage</b>	Smooth surfaces 6-8m <sup>2</sup> per litre
<b>Colour Range</b>	PBW and 420 lightfast optimised tinted colours from the <b>Weathershield</b> fandeck as well as a range of NCS2, RAL and BS colours

## Water-based matt finish

- Up to 10 years protection for exterior masonry
- Forms a higher sand textured build, bridges fine cracks and hides uneven surfaces commonly found on older properties
- Contains a unique acrylic resin for optimum protection
- Contains algicides and fungicides to help resist biological attack on the paint film

## Longer lasting good looks

In addition to providing up to 10 years protection for exterior masonry, **Weathershield** Textured Masonry Paint is formulated to counteract the harmful effects of UV light. The result is a finish that keeps its colour and vitality for longer.

The textured finish also forms a higher build, meaning those hairline cracks and imperfections are covered.





# Weathershield Exterior High Gloss System

Long lasting protection with three key components. The **Weathershield** Exterior High Gloss System helps to extend maintenance cycles for new work and redecoration, providing **up to 8 years** protection for exterior doors, windows and other joinery, and lowering total maintenance costs.



<b>Touch dry</b>	4-6 hours dependent on temperature and humidity
<b>Recoatable</b>	After 16-24 hours
<b>Coverage</b>	Up to 18m <sup>2</sup> per litre on most surfaces
<b>Colour Range</b>	PBW, Black and more than 4,000 tinted colours

Information relates to the **Weathershield** Exterior High Gloss

## Solvent-based Gloss Finish

### Step 1 Weathershield Preservative Primer+ (BP)#

- Helps to promote adhesion to properly prepared, degraded wood
- Contains fungicides and algicides to kill algae and fungi
- Penetrates into the wood to seal and protect against rot and blue stain, especially on the end grain

### Step 2 Exterior Undercoat

- Unique technology to give excellent flexibility and adhesion
- Moves with the wood to resist cracking and flaking
- Provides good build and excellent opacity

### Step 3 Exterior High Gloss

- Provides an excellent high gloss finish
- Contains fungicides to inhibit surface mould growth on the paint film
- High grade pigments to resist degradation from UV light

## Trusted by the trade for over 25 years

The **Weathershield** Exterior High Gloss System has celebrated its silver anniversary, marking 25 years of success in a highly competitive marketplace. As a market leader with extensive experience and long standing heritage, decorating professionals and specifiers know they can always rely on **Weathershield** Exterior High Gloss System to deliver a superb finish and up to 8 years protection for exterior wood and metal.



#See back page for details.



## CASE STUDY:

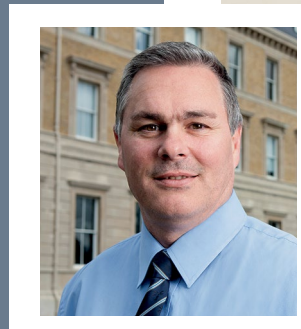
### Royal Military Academy Sandhurst

The recent extensive refurbishment of the world-renowned Royal Military Academy Sandhurst involved the repainting of no less than 300 sash windows.

Contractors Interserve and painting sub-contractors Jorgenson recommended that, after stripping back the window frames and removing rotten timber, the **Dulux Trade Weathershield** Exterior Gloss System should be specified, for the interior and exterior sash windows, due to its long-lasting, high gloss finish and because it offers up to eight years' protection.

Before it was applied, the window frames were stripped back and the rotten timber was cut out and replaced. Once this was complete, Jorgenson re-decorated all of the frames with WECS, a system comprising a Preservative Primer, Flexible Undercoat and Gloss.

Commenting on the finished result, Andy concluded: "The high quality work undertaken by Jorgensen coupled with the use of premium products has resulted in a brilliant finish."



"By using quality, durable products we can guarantee that it will continue to look impressive for years to come."

*Trusted by Andy Meachen,  
Project Manager at Interserve*

# Weathershield Quick Drying Exterior Gloss System

A fast drying gloss that allows application in changeable weather conditions, the **Weathershield Quick Drying Exterior Gloss System** features a water-based formulation for reduced environmental impact versus solvent-based finishes.



**Touch dry** 1-2 hours, dependent on temperature and humidity

**Recoatable** 4 hours

**Coverage** Up to 16m<sup>2</sup> per litre on most surfaces

**Colour Range** PBW and more than 620 tinted colours

Information relates to **Weathershield Quick Drying Exterior Gloss**

## Water-based Gloss Finish System

### Step 1 Weathershield Aquatech Preservative Basecoat+ (BP)#

- Helps to promote adhesion to properly prepared, degraded wood
- Contains fungicides and algicides to kill algae and fungi
- Penetrates into the wood to seal and protect against rot and blue stain, especially on the end grain

### Step 2 Quick Drying Exterior Undercoat

- Flexes with the wood to prevent cracking
- Superior covering power, excellent opacity

### Step 3 Quick Drying Exterior Gloss

- Increasing maintenance cycles to up to 6 years
- Fully VOC 2010 compliant; 39% CO<sub>2</sub> reduction versus solvent-based **Weathershield** Exterior High Gloss
- Outstanding gloss retention



#See back page for details.



# Weathershield Quick Drying Satin

This mid-sheen finish offers a fashionable satin look for exterior joinery, with no compromise on protection or longevity.



<b>Touch dry</b>	1-2 hours, dependent on temperature and humidity
<b>Recoatable</b>	After 2-4 hours
<b>Coverage</b>	Up to 20m <sup>2</sup> per litre on most surfaces
<b>Colour Range</b>	PBW and more than 620 tinted colours

Information relates to Weathershield Quick Drying Exterior Satin

## Water-based Satin Finish System

### Step 1 Weathershield Aquatech Preservative Basecoat+ (BP)#

- Helps to promote adhesion to properly prepared, degraded wood
- Contains fungicides and algicides to kill algae and fungi
- Penetrates into the wood to seal and protect against rot and blue stain, especially on the end grain

### Step 2 Quick Drying Exterior Undercoat

- Flexes with the wood to prevent cracking
- Superior covering power, excellent opacity

### Step 3 Quick Drying Exterior Satin

- Provides a fashionable satin finish
- Up to 6 years lasting protection
- Contains a fungicide to help protect against the disfiguring effect of mould growth on its film

#See back page for details.





# Weathershield Ultimate Woodstain

A high performance, exceptionally durable semi-transparent woodstain ideal for exterior joinery and cladding.

Solvent-Based



- Formulated for up to 10 years protection
- Highly flexible semi-transparent finish resists cracking, flaking and peeling
- Excellent spreading rate with up to 20m<sup>2</sup>/litre coverage\*
- Excellent water repellency
- Traditional application properties

For bare wood, always specify in conjunction with **Weathershield Aquatech Preservative Basecoat+<sup>IP</sup>** for optimum performance

**Colour Choice:** Available in 21 natural wood colours. See website for full range.  
**Coverage:** Smooth wood up to 20m<sup>2</sup>/litre/coat (normally 2 coats)  
**Drying Time:** 4-6 hours  
**Recoat Time:** 16 hours

\*A guide to practical coverage which can be achieved under normal conditions is 20m<sup>2</sup>/litre. †See back cover for full details

## Long term cost savings

Cost can be reduced by extending maintenance cycles, or keeping the same interval but with lower redecoration costs.

### Extended maintenance cycles reduce the whole life cost

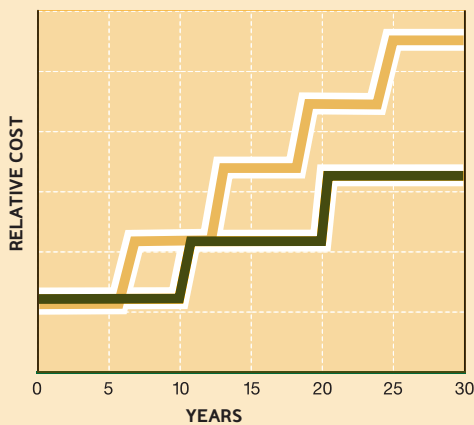
10-year protection can mean years longer before re-application is required, which offers:

- Cost savings
- Less disruption
- Reduced carbon footprint

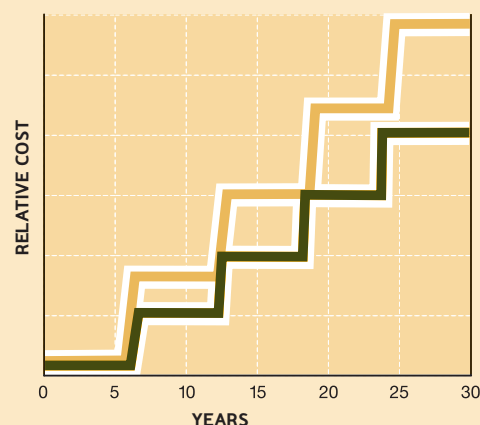
### Reduce redecoration costs

Retain the existing maintenance cycle and redecoration cost savings will result from the better condition of the wood.

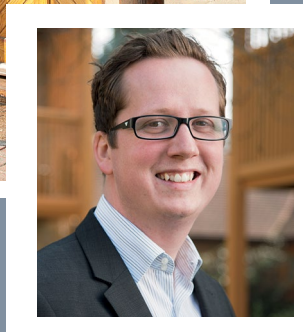
- Ultimate keeps wood in better condition
- Lower redecoration cost each time



■ DULUX TRADE STANDARD WOODSTAIN  
 ■ WEATHERSHIELD ULTIMATE



■ DULUX TRADE STANDARD WOODSTAIN  
 ■ WEATHERSHIELD ULTIMATE



“The products have exceeded our expectations, and we’re confident they will outperform the previous applications.”

*Trusted* by Jonathan Coles, Estate Manager,  
Cambridge Property Management.

## CASE STUDY:

Reliable **Weathershield** Ultimate Woodstain performance seals the deal for Brooklands Court maintenance project.

CONTRACTOR: Cambridge Property Management

Brooklands Court in Cambridge comprises three residential blocks and a selection of bungalows. When they became due for routine maintenance work, estate management company Cambridge Property Management decided to refresh all woodwork including windows, front doors and panelling.

They turned to the experts at **Dulux Trade** for advice, who in turn specified **Weathershield** products. **Dulux Trade Weathershield** Ultimate Woodstain, which provides up to ten years protection and comes in 21 natural wood shades, was chosen to help enhance and protect the timber of the front doors.

A spokesperson for Cambridge Property Management comments “The wide selection of colours meant we were able to use a combination of shades to enhance the visual appeal of the development, while making the most of the natural appearance of the timber. Feedback from residents has been very positive.”

# Weathershield Ultimate Opaque

High performance, exceptionally durable opaque finish ideal for exterior joinery and cladding.

Solvent-Based

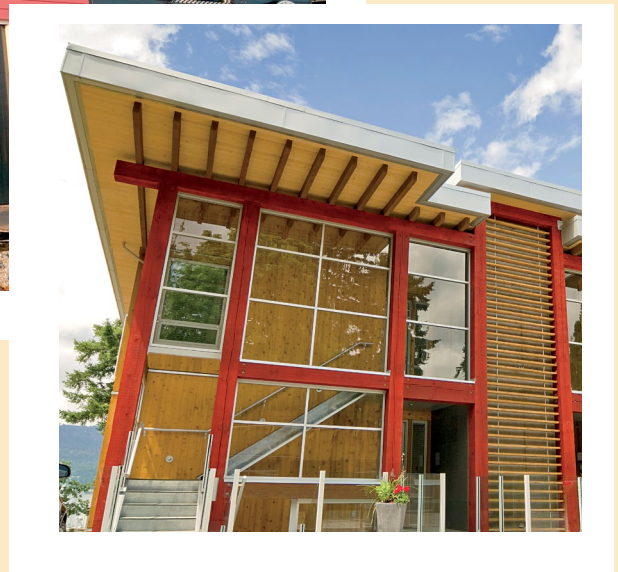


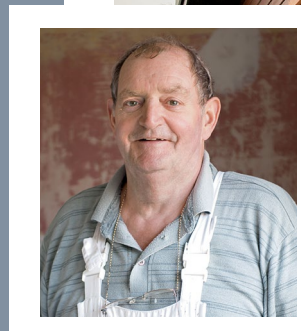
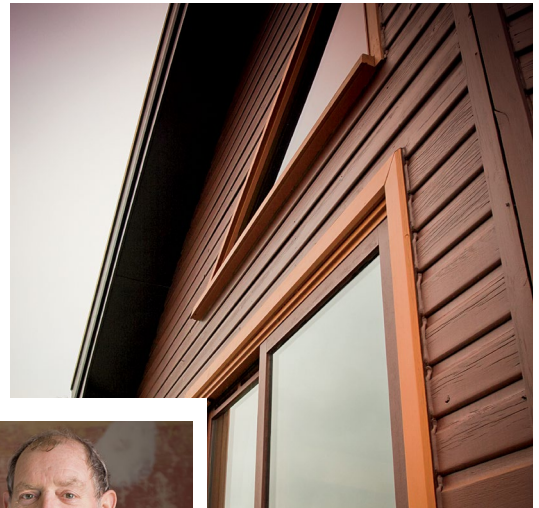
- Formulated for up to 10 years protection
- Highly flexible opaque finish resists cracking, flaking and peeling
- Excellent water repellency

For bare wood, always specify in conjunction with **Weathershield Aquatech** Preservative Basecoat+<sup>BRP</sup> for optimum performance

**Colour Choice:** Available in a range of 600 colours. See website  
**Coverage:** Smooth wood: up to 20m<sup>2</sup>/litre/coat (normally 2 coats)  
**Drying Time:** 4-6 hours  
**Recoat Time:** 16 hours

<sup>a</sup>See back cover for full details





## CASE STUDY:

Rufford Park Golf & Country Club put their trust in **Dulux Trade Weathershield** Ultimate Opaque protection

CONTRACTOR: Sanders and Thomas

Rufford Park Golf & Country Club's timber-clad clubhouse is surrounded by stunning Sherwood Forest scenery – and is continually exposed to the elements.

As part of the substantial renovations the owners appointed local decorating company Sanders and Thomas to give the cladding a new look. After consulting **Dulux Trade** Specification Account Manager Janet Robertson, they chose **Dulux Trade Weathershield** Ultimate Opaque, a premium coating that withstands all weather conditions and protects timber for up to ten years.

Graham Sanders of Sanders and Thomas said "A hardwearing premium finish was required that would withstand all weather conditions. It was essential we selected a coating that was extremely durable and flexible."

Club Manager Helen Hagues adds "The colour has totally transformed the building and provides a great impression to our guests."

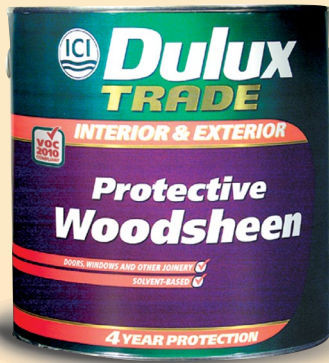
**"We are very impressed with it"**

*Trusted by Graham Sanders,  
Sanders and Thomas.*

# Dulux Trade Protective Woodsheen

A semi-transparent woodstain for interior and exterior joinery.

Solvent-Based



- Offers up to 4 years exterior protection
- Flexes with the wood to resist cracking, flaking and peeling
- Suitable for hardwoods and softwoods

For bare wood, always specify in conjunction with **Weathershield Aquatech Preservative Basecoat+<sup>®</sup>** for optimum performance

**Colour Choice:** Available in 21 natural wood and 18 designer colours. See website

**Coverage:** Smooth wood: up to 20m<sup>2</sup>/litre/coat (normally 2 coats)

**Drying Time:** 4-6 hours

**Recoat Time:** 16 hours

<sup>®</sup>See back cover for full details

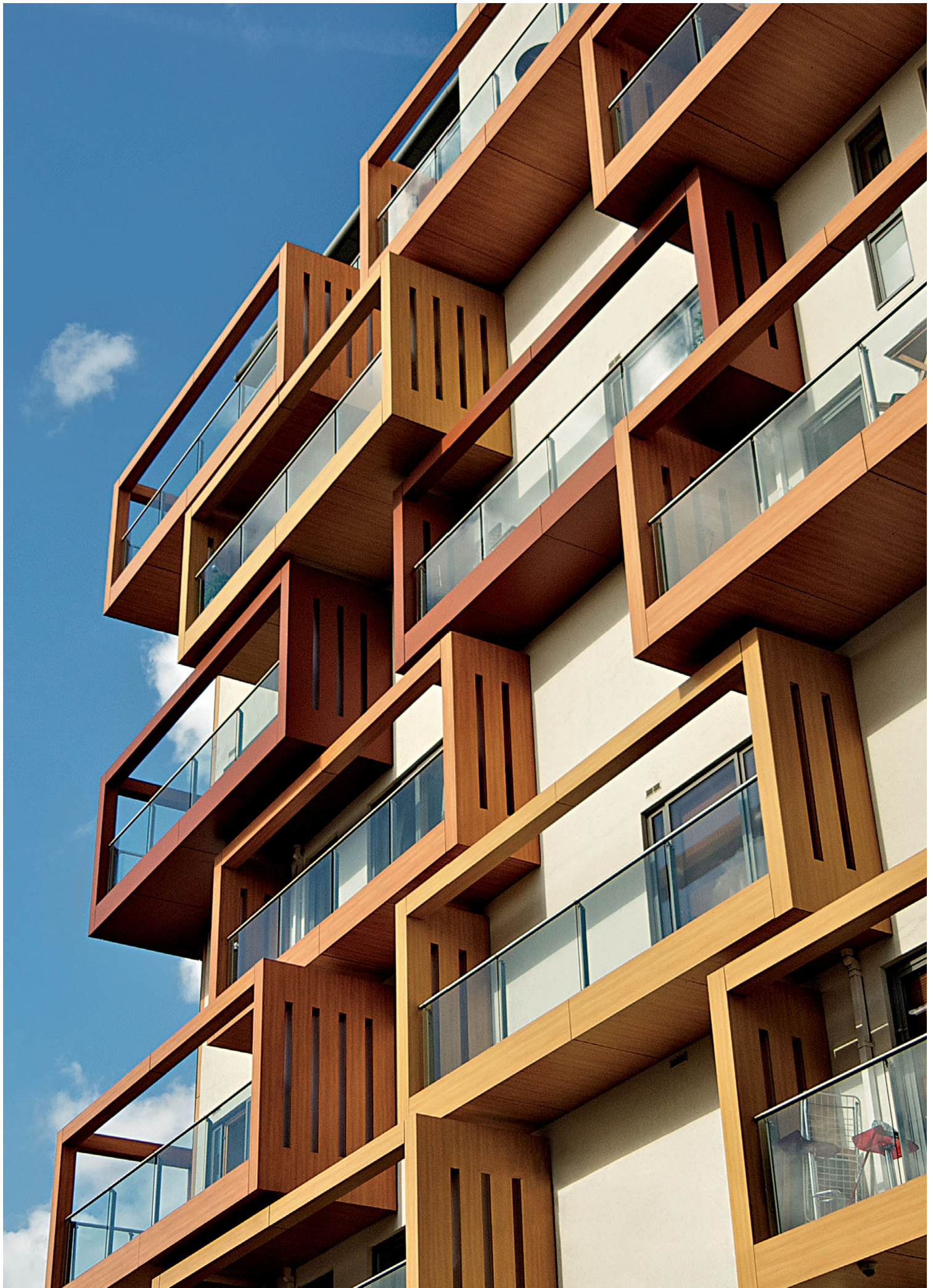
## Up to 4 years protection inside and outside

Dulux Trade Protective Woodsheen is the perfect choice indoors or out when an all-purpose medium build satin finish is required.

As well as providing an attractive, semi-transparent mid-sheen finish, Protective Woodsheen protects interior or exterior wood for up to 4 years, flexing to resist cracking, flaking and peeling.

Equally suitable for hardwoods and softwoods, **Dulux Trade Protective Woodsheen** is available in a choice of 21 natural wood colours and 18 designer shades.





# Weathershield Aquatech Woodstain

A high-performance, quick-drying woodstain for exterior joinery and cladding.

Water-Based



- Superb durability – protects wood for up to 6 years
- Improved appearance – resists cracking, flaking and peeling
- Multiple applications – suitable for softwoods and hardwoods

For bare wood, always specify in conjunction with **Weathershield Aquatech Preservative Basecoat+<sup>BP</sup>** for optimum performance

**Colour Choice:** Available in 21 natural wood colours. See website

**Coverage:** Smooth wood: up to 20m<sup>2</sup>/litre/coat (normally 2 coats)

**Drying Time:** 1 hour

**Recoat Time:** 2 hours

<sup>a</sup>See back cover for full details



## Water-based woodcare at its most effective

**Two formulations that deliver the benefits of water-based technology with no compromise on performance.**

Advances in technology mean that **Dulux Trade** is able to offer a comprehensive choice of water-based woodcare formulations to meet the needs of the specifier. High performance products such as **Weathershield Aquatech Woodstain** and **Weathershield Aquatech Opaque** bring outstanding levels of protection and aesthetic appeal to exterior joinery, together with all the advantages of water-based technology, such as being quick drying and having a reduced environmental impact.

# Weathershield Aquatech Opaque

A high-performance opaque finish for exterior joinery and cladding.

Water-Based



- Tough and durable – no need to recoat for up to 6 years
- Flexible and long lasting – opaque finish prevents cracking, peeling and flaking
- Water-based and versatile – use on softwoods or hardwoods

For bare wood, always specify in conjunction with **Weathershield Aquatech Preservative Basecoat+<sup>BP</sup>** for optimum performance

**Colour Choice:** Available in a range of 600 colours.  
See website

**Coverage:** Smooth wood: up to 20m<sup>2</sup>/litre/coat (normally 2 coats)

**Drying Time:** 1 hour

**Recoat Time:** 2 hours

<sup>†</sup>See back cover for full details



## CASE STUDY:

Akeley Wood School counts on **Weathershield Aquatech Opaque** to deliver class results

CONTRACTOR: PA Decorators

It was a case of 'history in the flaking' at Akeley Wood School in Northamptonshire, where the exposed oak beams of the historic Tudor buildings were displaying signs of deterioration due to exposure to the elements.

As part of a larger school-wide renovation project, the school turned to **Dulux Trade** to specify advanced woodcare products to protect and preserve the timber, while allowing the historic character of the building to shine through.

“I was really impressed with the finish compared to a solvent-based woodstain.”

*Trusted by Richard Juniper,  
Project Specifier, Jackson Coles.*

To restore the cracked and peeling beams to their former glory, contractors PA Decorators removed the existing layers of bitumen and creosote before applying **Dulux Trade Weathershield Aquatech Opaque** in Black. The water-based formulation dries quickly to a flexible satin finish which will provide protection for up to six years.

# Trust the colour experts

The **Dulux Trade** name tells you everything you need to know about **Weathershield** colours. But it isn't just the sheer breadth of choice that sets the range apart. All the **Weathershield** fandeck colours have been optimised for light fastness – yet another way in which the coatings are made to last.

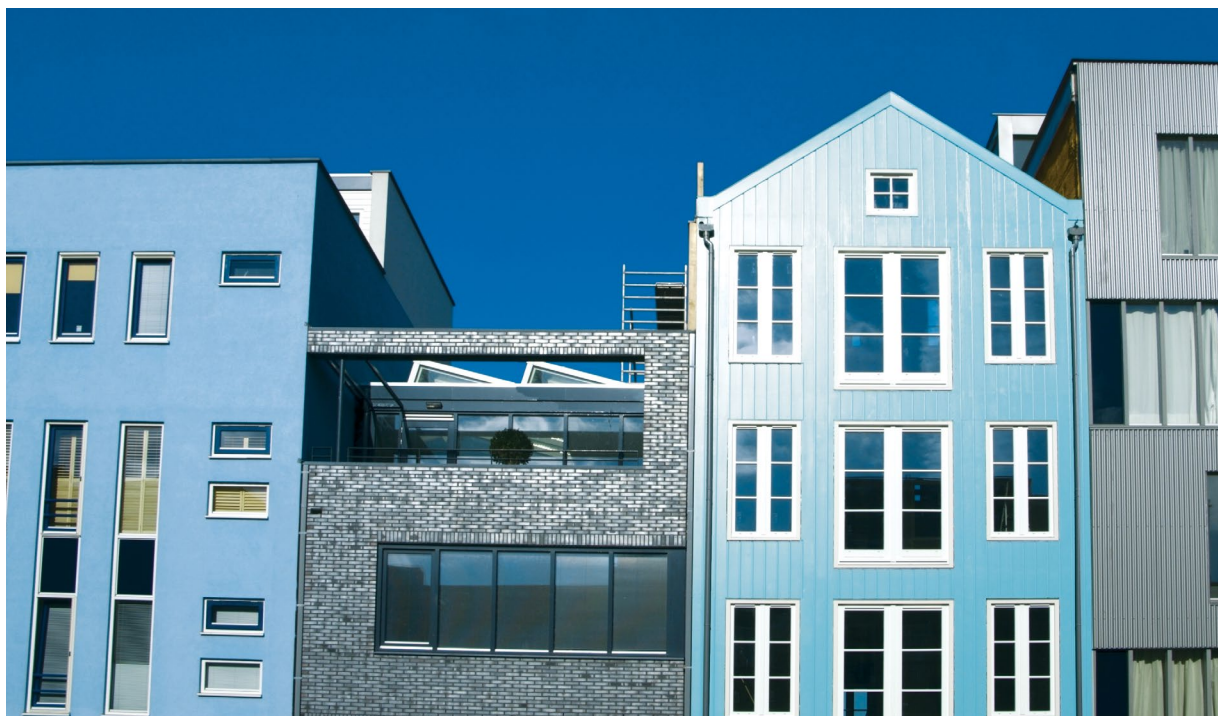
When **Weathershield** products are applied to an exterior they are going to be around for a very long time, so it is crucial to choose colours that work beautifully with the project and its environment.

There are two principal colour selection tools for use with the **Weathershield** range. The **Weathershield** Exterior Fandeck encompasses 420 contemporary and classic shades, plus 156 complementary trim colours.

All the colours within the **Weathershield** fandeck have been optimised for lightfastness, ensuring your colour choice looks better for longer.

The **Weathershield** professional colour card offers a wide selection of mainstream colours, contemporary options and many timeless favourites.

**Weathershield** masonry and exterior trim products are also available in many **Dulux Trade** Classic Colour shades and all BS4800 colours.





# Superb products backed by exceptional support

With the latest online specification tools and partnerships with independently assessed, quality assured specialist painting contractors, you can be even more confident about achieving the right result on every project.



## DuSpec<sup>2.0</sup>

**Experience the next generation of online paint and woodcare specification.**

**DuSpec 2.0** is the definitive source of decorative product information for architects and other professional specifiers. Building your paint specifications has never been easier. Simply search, filter and select the right paint for your project and the relevant clauses will be added in automatically. Customise with your company logo and bespoke project details and **DuSpec 2.0** will build this into the documentation for a more professional presentation, every time.

**Enhanced features include:**

- Find the best paint systems for your project in a matter of clicks
- Save time through improved interface and search functionality
- Share projects with colleagues and clients

For more information visit [www.duspec.com](http://www.duspec.com)

## Dulux Trade Contract Partnership

**Dulux Trade Contract Partnership** is an exclusive membership scheme of independently assessed, quality assured painting contractors.



By joining the scheme, contractors are demonstrating their commitment to providing an outstanding professional service to their clients. Members are committed to demonstrating industry leading sustainability best practice and are well placed in helping clients meet their specific environmental, social and economic objectives.

**“We have worked with Dulux Trade Contract Partners over the years and have been impressed with their professionalism and commitment to delivering a quality job”**

**Trusted** by Dale Turner, Head of Procurement  
– Strategic Sourcing Team, Skanska.

**A Dulux Trade Contract Partner is committed to:**

- Quality workmanship
- Delivering a professional service
- Continual improvement
- Providing value for money
- Being reliable and trustworthy

The on-going assessment programme and Code of Practice demonstrate how **Dulux Trade** Contract Partners are working to a consistently high standard of workmanship and professionalism.

When you need a project completed right first time, on time and there is no room for error – you can rely on a **Dulux Trade** Contract Partner.



# A great finish starts with the right preparation

The **Weathershield** range includes surface preparation products that maximise the durability and effectiveness of the undercoats and topcoats. Start here and you can be totally confident in the quality of the finish.



## Stabilising Primer

Specially formulated to seal unstable areas which remain powdery and chalky.

- Stabilises powdery masonry surfaces
- Solvent-based
- Touch dry normally in 8-12 hours
- Ready for use



## Multi-Surface Fungicidal Wash

A fungicidal wash for cleaning wood and masonry surfaces prior to painting.

- Kills mould, algae, lichen and other vegetable growths on all exterior masonry and wood whilst protecting from regrowth
- Registered with the HSE



## Flexible Filler

A lightweight, easy to use filler, specifically formulated for use on wood and masonry with the **Dulux Trade Weathershield Systems**

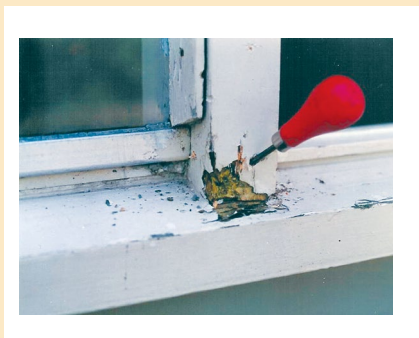
- Filler for minor cracks in exterior masonry and woodwork
- Excellent flexibility and adhesion to resist shrinking and cracking
- Unique technology uses hollow glass beads, which are more stable than conventional extenders and do not swell or shrink

# The 1-2-3 maintenance system for window care

A stepped approach to achieving ultimate protection. **Dulux Trade** and Repair Care International have established a formalised agreement to provide a total solution for Local Authorities, Housing Associations, private practices and contractors.

**With a new generation of elastic epoxy products Repair Care International can offer average curing times of 1, 4 and 16 hours to suit all applications in all seasons.**

This has resulted in a clear 1-2-3 maintenance system that helps keep maintenance costs under control and has a proven track record in long-term preservation of wood surfaces and timber constructions. The 1-2-3 stepped approach provides a system for inspecting and assessing the condition. Any problems are then corrected to get ultimate protection for wood surfaces.



## Step 1 Inspection and inventory

The condition of wooden surfaces and timber constructions is key to achieving preservation. Careful examination of the following will indicate possible corrective action and costs:

- The substrate (inc. joints, surface cracks and exposed end-grain).
- The glass sealing (inc. moisture ingress between the glass and putty, and the condition of the putty)
- The paint system (inc. condition of existing finish, including the interior).
- Other aspects (e.g. condition of hinges and locks, perimeter sealing, bad repairs).

## Step 2 A sound substrate

When minor imperfections are spotted, repairing them in time using Repair Care International preventative methods can prevent future damage and unforeseen costs.

Once identified, Repair Care International's repair methods can almost always repair the damage. Simply by using these durable products, combined with proven work methods, costly replacements can be eliminated.

## Step 3 A durable final result

By using **Dulux Trade Weathershield Exterior Gloss** or **Dulux Trade Weathershield Ultimate Woodstain**, the wood will continue to repel weather and moisture for years to come.

### THE 1 4 16 WOOD REPAIR SYSTEM



PRACTICAL, FAST AND COMPLETE

**REPAIR CARE  
INTERNATIONAL**

## Providing all the support you need

The range of products and services from **Dulux Trade** is designed to meet the needs of the professional specifier. As part of this we offer a complete and comprehensive range of professional support services.

### Site Surveys

Specifier Account Managers can carry out a full site inspection. This will include assessment of the current condition of surface coatings, help with identification of difficult substrates and advice on extending maintenance cycles.

### Specification Writing

**Dulux Trade** offers full specification support tailored to your individual requirements. This will ensure that correct preparation is highlighted and the products specified are the most appropriate for the location, environment and substrate type.

### Contract Meetings

Specifier Account Managers can attend pre-contract, project review and post-contract assessment meetings, ensuring collaboration and clear communication from concept to completion.

### Site Visits

During the course of the work, if required, site visits can be made to ensure that work is being carried out correctly and in accordance to the specification.

To discuss further the specifics of your project and how **Dulux Trade** can help you, contact your local **Dulux Trade** Specifier Account Manager or email us at [duluxtrade.advice@akzonobel.com](mailto:duluxtrade.advice@akzonobel.com)

### Interact with Dulux Trade



#Dulux Trade Weathershield Aquatech Basecoat<sup>(BP)</sup> and Dulux Trade Weathershield Preservative Primer<sup>(BP)</sup> contain propiconazole and IPBC. Dulux Trade Weathershield Multi-surface Fungicidal Wash contains benzalkonium chloride

USE BIOCIDES SAFELY. ALWAYS READ THE LABEL AND PRODUCT INFORMATION BEFORE USE

### Contact Us

For product/Health and Safety data sheets please visit our website [www.duluxtrade.co.uk/weathershield](http://www.duluxtrade.co.uk/weathershield)

For more information or technical advice please contact **Dulux Trade** Technical Advice Centre on **08444 817 818**

**50% recycled**  
When you have finished with this brochure please recycle it

ICI, the ICI roundel, Dulux, Dulux Trade, the Dulux Trade logo, Weathershield, Aquatech, Duspec, the Dulux Contract Partnership logo, Dulux Previews and the AkzoNobel logo are trade marks of the AkzoNobel group © AkzoNobel 2013.