



Building Solutions



# Dow Building Solutions

Insulating ballasted  
inverted flat roofs with  
STYROFOAM Solutions



# Design considerations

## Introduction

The inverted roof system is ideally suited to flat roofs of heavyweight construction, and offers a durable, attractive roof finish for roofs where maintenance traffic is expected (**Figure 1**).

## STYROFOAM-A and ROOFMATE SL-A

STYROFOAM™-A products use carbon dioxide as the main blowing agent - the Ozone Depletion Potential (ODP) is zero and the Global Warming Potential (GWP) is less than five.

The STYROFOAM-A Solution for insulating ballasted inverted roofs is ROOFMATE™ SL-A.

ROOFMATE SL-A is designed to give the maximum benefit in inverted roof construction:

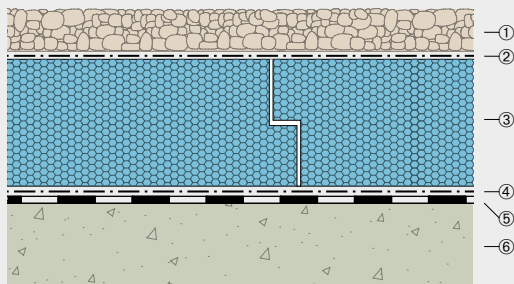
- » a range of thicknesses allows thermal performance to be matched to project requirements
- » shiplapped edges ensure a good interlock between boards, which helps prevent thermal bridging
- » rigid boards provide a firm base for the ballast layer.

For the full physical properties and performance characteristics of ROOFMATE SL-A products see separate guide: STYROFOAM performance, product overview and references.

## The ROOFMATE MinK system

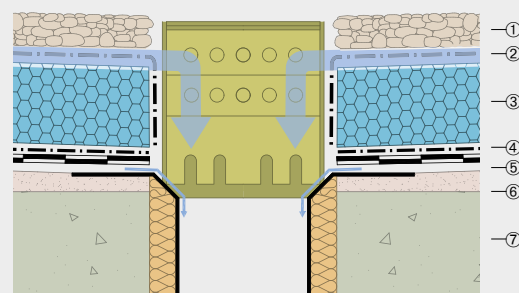
The rainwater cooling effect (caused by rainwater flowing between the insulation and waterproofing membrane) requires an increase in insulation thickness in order to meet BS EN ISO 6946. However, this increase can be substantially reduced by using the ROOFMATE MinK system, which helps to minimise the heat loss due to rainwater cooling and therefore the amount of insulation required.

ROOFMATE MK is waterproof, but at the same time water vapour permeable. It replaces the usual separating layer laid between the insulation and ballast (**Figure 2**). Rainwater is prevented from reaching the waterproofing layer, thereby reducing the rainwater cooling effect.



- |  |                                  |
|--|----------------------------------|
| ① ballast                                  | ④ separating layer (if required) |
| ② ROOFMATE MK or suitable separating layer | ⑤ waterproof layer               |
| ③ ROOFMATE SL-A                            | ⑥ concrete slab                  |

Figure 1: Ballasted inverted roof



- |                                  |                    |
|----------------------------------|--------------------|
| ① ballast                        | ⑤ waterproof layer |
| ② ROOFMATE MK separating layer   | ⑥ screed to falls  |
| ③ ROOFMATE SL-A                  | ⑦ concrete slab    |
| ④ separating layer (if required) |                    |

Figure 2 ROOFMATE MinK system in the inverted roof

# Design considerations

ROOFMATE MK should be loose-laid over the insulation, at right angles to the slope with 300mm laps running down the slope. This will allow the ballast, 20/40 aggregate, to counter board flotation to be reduced to 50 mm.

At upstands and penetrations ROOFMATE MK should be turned up to finish above the surface of the ballast.

ROOFMATE MK is a spun bonded polyethylene geotextile with the following properties:

- »» water vapour permeable
- »» water resistant
- »» tear resistant
- »» UV stable - can be left exposed outdoors for up to four months
- »» fire - melts and shrinks away from a heat source (unclassifiable as regards Building Regulations)
- »» temperature - retains flexibility and toughness down to -73°C, melting point is 135°C.

## Ballast

Both washed aggregate and dense concrete paving slabs are suitable as ballast for use with ROOFMATE SL-A insulation.

## Aggregate

This gives a good appearance at an economical cost and should be 20-40mm nominal diameter, clean, washed and reasonably free from fines. When boards are overlaid with a suitable separating layer - such as ROOFMATE MK - lapped 300mm, then a 50mm depth of 20/40 aggregate may be sufficient to counter flotation of the insulation. Additional ballast may, however, be needed in those areas subject to wind uplift, such as exposed perimeters and corners.

## Aggregate should be replaced by paving slabs:

- »» to form walkways where regular foot traffic is expected
- »» where the kerb at the roof edge is too shallow to retain the aggregate
- »» at perimeters, where calculations indicate aggregate will provide insufficient resistance to wind uplift or will be affected by wind scour - see BRE Digest 311.

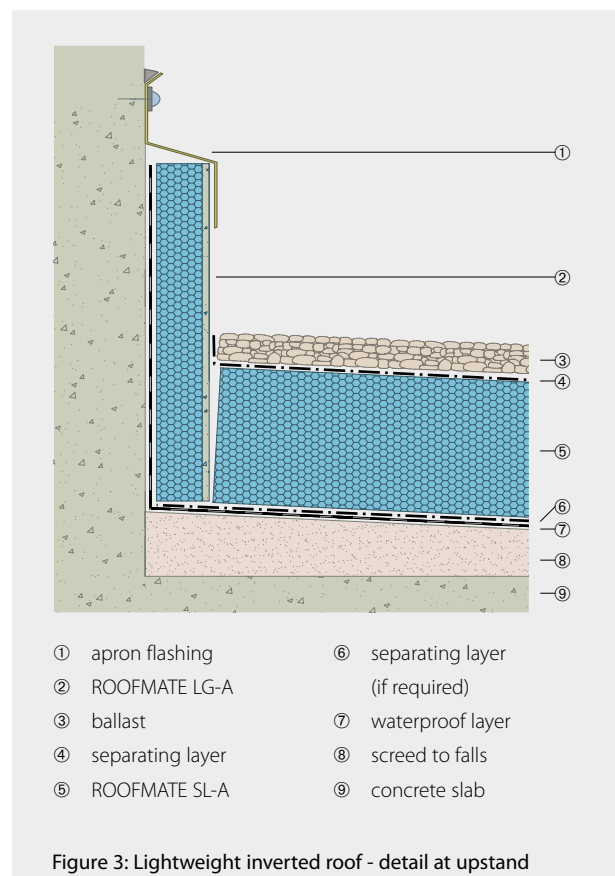
## Pavers

Pressed concrete pavers 600 mm x 600 mm and 50 mm thick should be raised off the insulation on spacers to allow drainage and to avoid rocking.

## Edge details

Upstands at parapets and abutments should be protected by either ROOFMATE LG-A boards set vertically or ROOFMATE SL-A boards set vertically and covered with an apron flashing (**Figure 3**). Extending the insulation in this way affords a consistent level of protection and helps to avoid thermal bridging. Apron flashings should be carried to at least 150mm above the surface of the ballast.

Kerbs, including those at verges and rooflights, should be high enough to contain the insulation and the ballast. ROOFMATE SL-A boards should be fitted tight against kerbs.



# Design considerations

## Drains and gutters

Outlet gratings may be raised on spacer rings to reduce the risk of blockage: cut a hole in the ROOFMATE SL-A boards to accommodate the outlets (**Figure 2**).

A paving slab on spacer pads may be used above a flat grating (**Figure 4**).

Where possible, line internal gutters with ROOFMATE SL-A to prevent thermal bridging - the gutter may be spanned by paving slabs on spacer pads (**Figure 5**).

Where the roof drains to an edge gutter terminate aggregate ballast with a row of paving slabs on suitable supports (**Figure 6**) and protect the edge of the ROOFMATE SL-A boards with a cover flashing.

## Roof falls and drainage

Good drainage is vital to the long-term performance of a flat roof. As with any building element, when designing a flat roof, it is good design practice to follow and adopt relevant design guidance. The most referred to guidance is that of BS 6229:2003 – flat roofs with continuously supported coverings which recommends an appropriate fall be accommodated within the roof design, including inverted flat roofs.

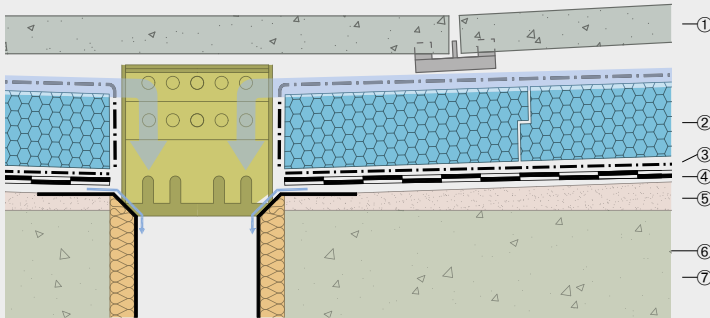
It is also vital that the roof is adequately drained to prevent ponding. The location, size and number of rainwater outlets should be designed in accordance with BS EN 12056-3:2000. The roof deck should also be without deflections or depressions in which water may pond. To perform effectively, ROOFMATE boards should not be totally or permanently submerged in water during the product's lifetime on a roof.

If the roof is regarded as 'zero pitch', then particular attention must be given to the provision of roof drainage to prevent ponding, as outlined in the BBA Information Bulletin No 4. The location, number and size of the drainage outlets need to be designed to facilitate acceptable removal of rainwater (and water from other precipitation) to avoid the thermal insulation boards within the inverted roof construction being either totally or permanently immersed in water.

If significant areas of ponding as a result of back falls are identified, an appropriate design strategy must be adopted to ensure their removal prior to the insulation being installed. Specify rainwater outlets which will accept run-off from both the top of the insulation and the surface of the waterproofing.

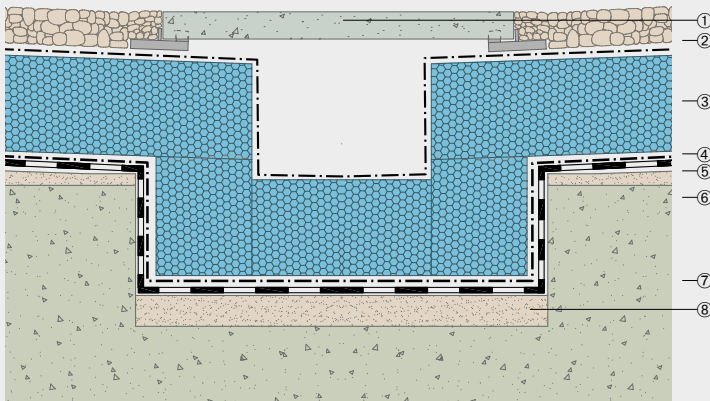
Further guidance and information can be found in ETAG 031, Guideline for European Technical Approval of Inverted Roof Insulation Kits Part 1.

# Design considerations



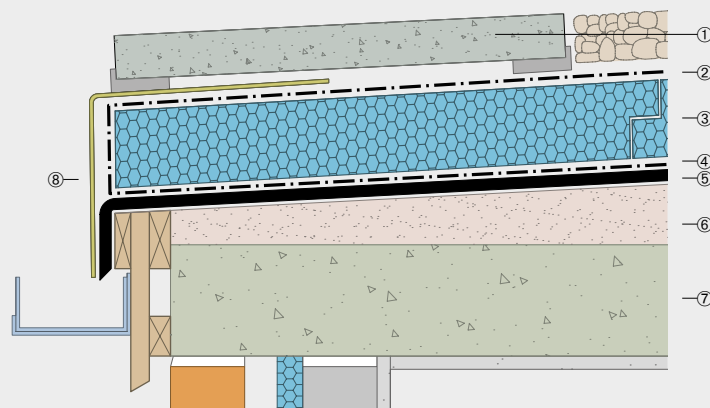
- ① paving slabs on spacer pads
- ② ROOFMATE SL-A
- ③ separating layer (if required)
- ④ waterproof layer
- ⑤ screed to falls
- ⑥ roof outlet
- ⑦ concrete slab

Figure 4 Ballasted inverted roof - outlet protected by paving slabs



- ① paving slabs on spacer pads
- ② ballast
- ③ ROOFMATE MK or a suitable separating layer
- ④ ROOFMATE SL-A
- ⑤ separating layer (if required)
- ⑥ waterproof layer
- ⑦ concrete slab
- ⑧ screed to falls

Figure 5 Ballasted inverted roof - insulation over internal gutter



- ① paving slab on spacer pads
- ② ROOFMATE MK or a suitable separating layer
- ③ ROOFMATE SL-A
- ④ separating layer (if required)
- ⑤ waterproof layer
- ⑥ screed
- ⑦ concrete slab
- ⑧ flashing

Figure 6 Ballasted inverted roof - detail at eaves

# Installation methods

## Installation sequence

1. Inspect the roof to ensure it is clean.  
Plan the installation sequence and the layout of ROOFMATE SL-A boards.
2. Lay the separating layer (if required) over the waterproof layer; lap all edges by 200-300mm, at perimeters and penetrations turn up above the installed thickness of the insulation.
3. Lay ROOFMATE SL-A insulation boards in brick bond pattern with shiplap edges pushed together firmly (**Figure 7**).
4. Insulate upstands with ROOFMATE LG-A boards (**Figure 3**).
5. Fit ROOFMATE SL-A boards neatly around penetrations (**Figure 8**).  
Cut boards with a sharp knife or fine toothed saw.
6. Lay ROOFMATE MK or suitable separating layer with 300mm laps at right angles to the slope.  
Arrange laps to run down the slope (**Figure 9**).  
At upstands and penetrations turn up the filter layer so it finishes above the surface of the ballast.
7. Lay paving slabs on supports around roof perimeters and penetrations as required.
8. Lay the ballast layer progressively. Work on an advancing front away from the point of access so all ballast material is carried across a protected waterproof layer (**Figure 10**).

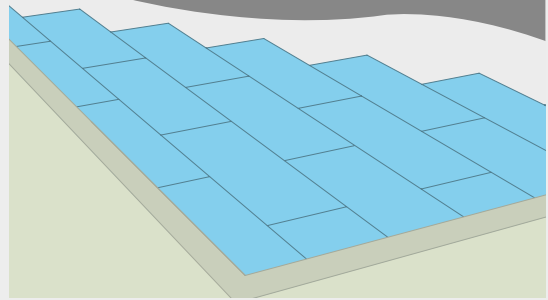


Figure 7

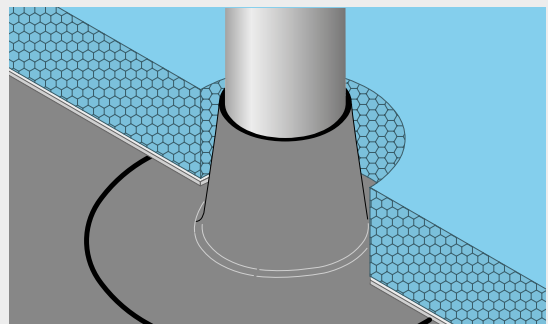


Figure 8

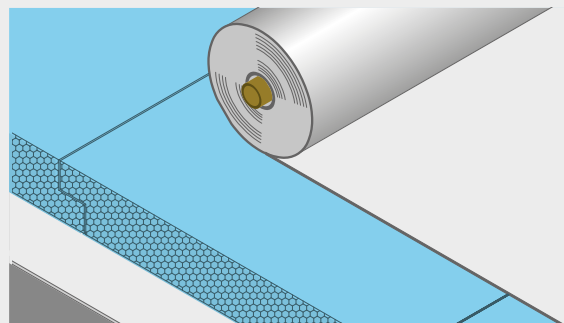


Figure 9

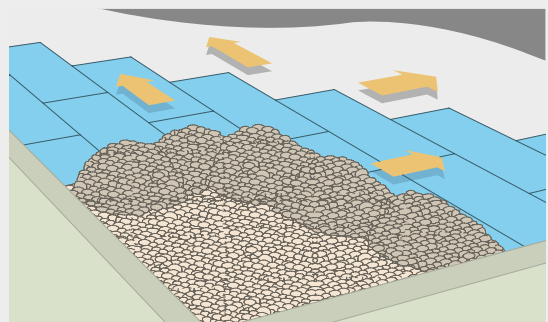


Figure 10

# Installation methods

## Key points

- ››› careful setting out before installation begins will minimise cutting and wastage
- ››› take care not to over-stress any area of the roof while distributing the ballast
- ››› use scaffold boards when barrowing materials over ROOFMATE SL-A boards.

## Specification

- J21** Mastic asphalt roofing 120/125
- J41** Reinforced bitumen membrane roof coverings
- J42** Single layer polymeric roof coverings
  - 440 Extruded polystyrene (XPS) inverted roof insulation
  - 810 Inverted roof insulation
  - 820/840 Ballast layers

## ROOFMATE SL-A

**Thicknesses:** 100, 120, 140, 160, 180, 200\* mm

**Board size:** 1250 x 600 mm, \*2500 x 600 mm

**Edge profile:** butt edge

**Design loading:** 130kN/m<sup>2</sup>

**Fire Classification:**

Reaction to fire: BS EN 13164 Euroclass E

**Working temperature range:** -50°C to +75°C.

## Advice guide:

- ››› do not lay insulation until roof is clear of other subtrades
- ››› clean off all dirt and debris from base
- ››› lay separation layer as required
- ››› set out to minimise cutting and avoid small cut pieces at perimeters and penetrations
- ››› loose lay boards, tightly butted and to brick pattern, cut cleanly to fit closely around projections, upstands, rainwater outlets, etc
- ››› on completion of laying ensure boards are in good condition, with no springing, flexing or rocking
- ››› secure boards against wind uplift as soon as practicable
- ››› lay ROOFMATE MK or suitable separating layer.

## Recommendations

STYROFOAM products include FLOORMATE, ROOFMATE and PERIMATE.

STYROFOAM products contain a flame retardant additive to inhibit accidental ignition from a small fire source. STYROFOAM is, however, combustible and if exposed to an intensive fire may burn rapidly.

During shipment, storage, installation and use STYROFOAM products should not be exposed to flames or other ignition sources. Fire classification is based on small scale tests, which may not reflect the reaction of the products in its end use state under actual fire conditions. STYROFOAM products should, when installed, be adequately protected from direct exposure to fire.

Recommendations about the methods, use of materials and construction details are given as a service to designers and contractors. These are based on the experience of Dow with the use of STYROFOAM products.

Any drawings offered by Dow are meant only to illustrate various possible applications and should not be taken as a basis for design. Since Dow is a materials supplier and exercises no control over the installation of STYROFOAM products, no responsibility is accepted for such drawings and recommendations.

In particular, no responsibility is accepted by Dow for the systems in which STYROFOAM is used or the method of application by which it is installed. The legal obligations of Dow in respect of any sale of STYROFOAM products shall be determined solely by the terms of the respective sales contract.

### Note:

The information and data contained in this brochure do not represent exact sales specifications. The features of the products mentioned may vary. The information contained in this document has been provided in good faith, however it does not imply any liability, guarantee or assurance of product performance. It is the purchaser's responsibility to determine whether these Dow products are suitable for the application desired and to ensure that the site of work and method of application conform with current legislation. No licence is hereby granted for the use of patents or other industrial or intellectual property rights. If Dow products are purchased, we advise following the most up-to-date suggestions and recommendations.

Visit [www.styrofoam.co.uk](http://www.styrofoam.co.uk) for further information on STYROFOAM-A insulation products and adhesives and sealants from Dow Building Solutions, or email [FKLMAIL@dow.com](mailto:FKLMAIL@dow.com) and one of the account managers will be in touch.

For technical enquiries email [FKLTECH@dow.com](mailto:FKLTECH@dow.com).

Alternatively, please contact us at:



## Building Solutions

**Dow Chemical Company Limited**  
**Dow Building Solutions**

**Diamond House, Lotus Park**  
**Kingsbury Crescent, Staines,**  
**TW18 3AG**  
**Tel.: 020 3139 4000**  
**Fax: 020 3139 4013**  
**Internet: [www.styrofoam.co.uk](http://www.styrofoam.co.uk)**