

Click here to contact us and  
get more information

← **FIREDOOR RANGE**



## : **DOVETAIL DOORS** →

Dovetail Enterprises are leading manufacturers and suppliers of high performance, fire-rated and acoustic Door products. We produce Doors, Doorsets, and Screens in virtually any combination of veneers, timbers and glazing finishes.

Our products are installed in client sites across a broad range of market sectors – Construction, Hotel, Leisure, Student Residence, Local Authority, and Care Home.

You are welcome to visit our modern 100,000 sq ft manufacturing facility in Dundee, where we are able to marry together the traditional skills of our craftsmen with state-of-the-art CAD drawing, CNC and other Door manufacturing equipment.

And you can get a flavour of the range and quality of our products and see some of our flagship installations on the following pages.



[Click here to visit our website](#)

## FIREDOOR RANGE →

### : PRODUCTS →

#### Flush Door Leaves

We supply a complete range of flush doors in 30 to 120 minute fire rating. We have an extensive list of options and finishes and our emphasis on speciality and quality allows us to match your specific requirements.

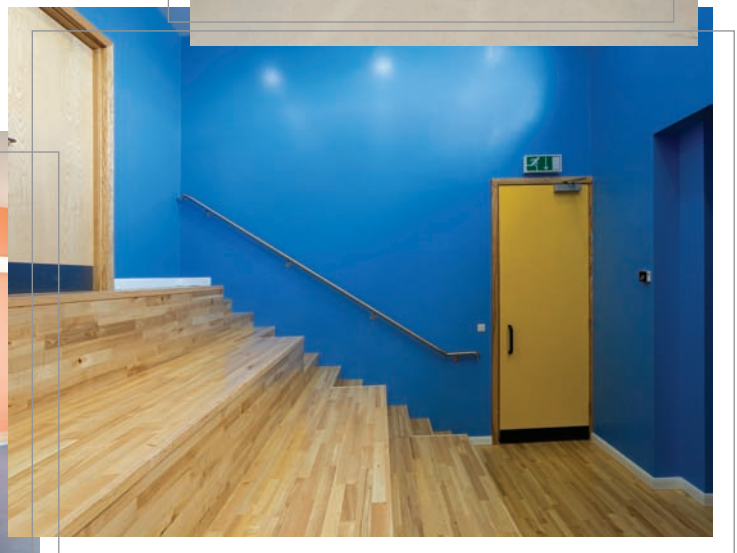
We use high-performance door blanks in solid core, multi-layer particle board, and plywood-faced laminated timber core suitable for external use.

#### Fire Resistance

- FD 30 doors 44mm thick
- FD 60 doors 54mm thick
- FD 120 doors 64mm thick

#### Options include:

- Vision Panels and factory glazing (see pages 20-21)
- Moulded Panel Doors
- Vent openings
- Machining for Ironmongery
- Decorative real-wood veneers pre-finished in factory
- Decorative High Pressure laminates
- Primed for painting or painted in the factory
- Fitting of ironmongery
- Sliding
- Double Swing



**Dovetail Sales 01382 833890**



## : **INTERNAL AND EXTERNAL DOORSETS** →

Doorsets are made to your specific requirements, normally using Redwood for internal and FD30 sets with hardwoods being used for external and FD60 sets. All ironmongery and components can be machined and installed in our factory to ensure we meet your precise requirements for fire protection and performance. We also provide associated matching timbers, architraves, and skirtings.

### **Options include:**

- Solid frames with planted stop
- Solid frames with rebated stop
- Over panels and Fanlights
- Fixed side-lights
- Machining for ironmongery
- Primed for on-site finishing

### **Specialist Doorsets:**

- Lead lined X-ray protection
- High Performance Acoustic
- External
- Security

For specialist Doorset requirements, please contact our technical department.



## FIREDOOR RANGE →



## : SCREENS →

To complement our doorset products we manufacture fire rated and non-fire rated glazed screens. Various glass types and thicknesses are used to meet the required integrity and insulation.

**Options include:**

- Redwood or Meranti primed for on-site finishing
- Hardwood frames sealed in factory (oak, beech, maple, cherry etc.)
- Various sizes to suit requirements
- Multiple sections
- Safety glass to comply with BS 6206 : 1981

Frame sections for fire rated screens to be of minimum 44 x 70mm cross-section with a density not less than 550 kg/m<sup>3</sup> for 30 min FR and 650 kg/m<sup>3</sup> for 60 min FR. Hardwood glazing beads are required and recommended in all instances.

**Dovetail Sales 01382 833890**

[Click here to contact us and get more information](#)

← **FIREDOOR RANGE**

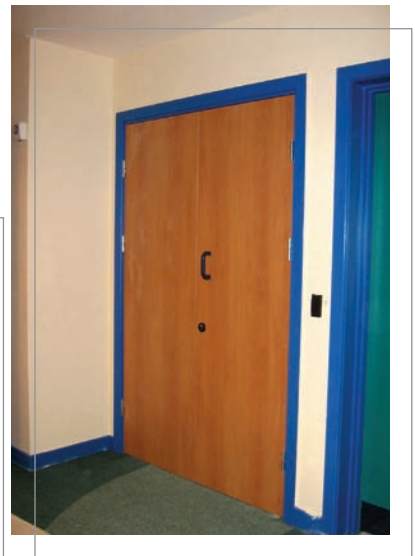




[Click here to visit our website](#)

## FIREDOOR RANGE →

### : LAMBETH CITY ACADEMY →



Laminate Faced Doors  
FD30 and FD60 Rated  
with Fire Rated side screens

**Dovetail Sales 01382 833890**

Click here to contact us and  
get more information

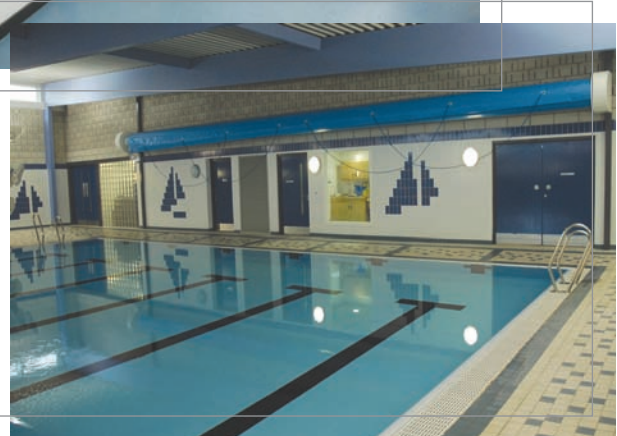
← **FIREDOOR RANGE**



**: ROXBURGHE HOUSE →**



**: ST JOHN'S HIGH SCHOOL →**

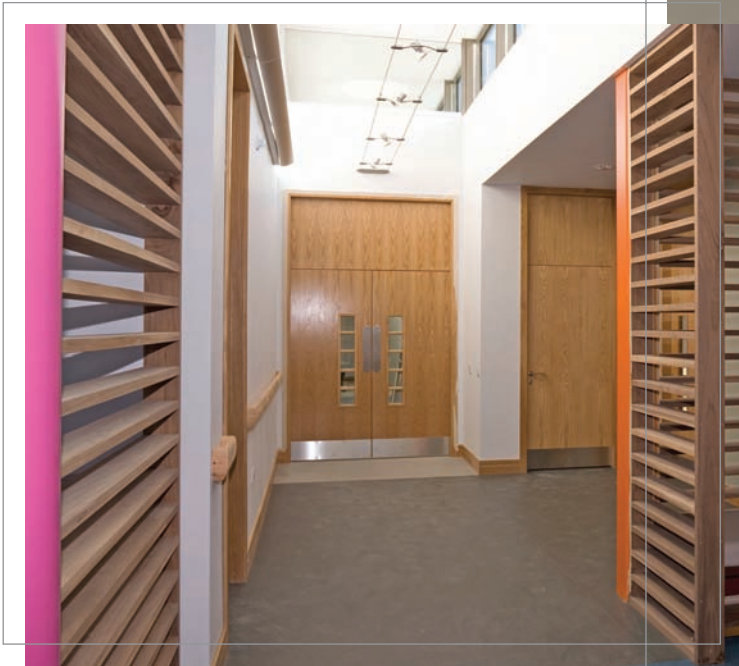
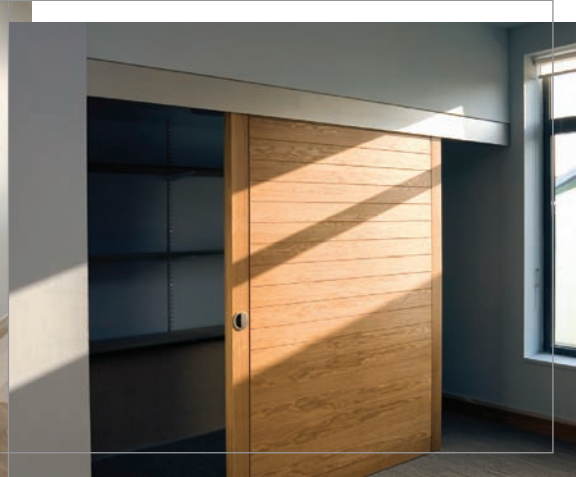
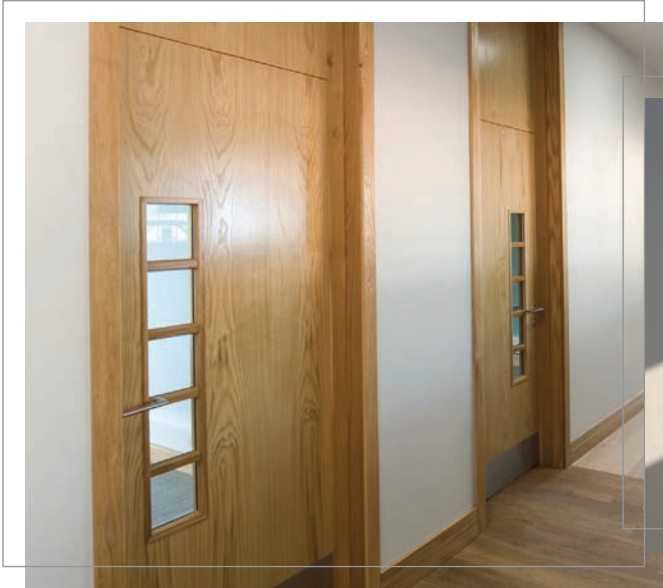




[Click here to visit our website](#)

## FIREDOOR RANGE →

### : DALE RESOURCE CENTRE →



Pictures of Dale Resource Centre by  
kind permission of Bryceland Timber

**Dovetail Sales 01382 833890**

Click here to contact us and  
get more information

← **FIREDOOR RANGE**



**: HOLIDAY INN EXPRESS →**



**: BIELDSIDE INN →**





[Click here to visit our website](#)

**FIREDOOR RANGE** →

**: GLENEAGLES HOTEL** →



Fourth Floor Refurbishment



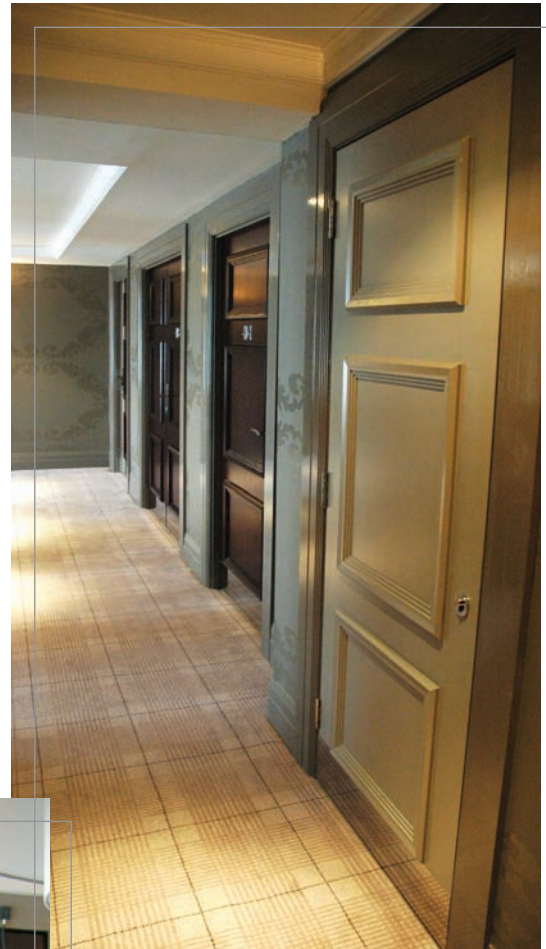
**Dovetail Sales 01382 833890**

Click here to contact us and  
get more information

← **FIREDOOR RANGE**



**: GLENEAGLES HOTEL →**



Pictures by kind permission of  
Gleneagles Hotel



[Click here to visit our website](#)

## FIREDOOR RANGE →

## : WOODS OF PERTH →



Pictures by kind permission of Woods of Perth

**Dovetail Sales 01382 833890**

Click here to contact us and  
get more information

← **FIREDOOR RANGE**



## : CERTIFICATIONS →

Dovetail supply products with the following certifications and accreditation:



QUALITY APPROVED UNDER ISO 9001:2000



APPROVED MEMBERS OF BWF-CERTIFIRE SCHEME



DOOR CORES USED IN MANUFACTURING ARE FROM APPROVED MEMBERS OF BM TRADA Q MARK FIRE DOOR SCHEME



APPROVED MEMBER OF THE BRITISH WOODWORKING FEDERATION





# FIREDOOR RANGE →

## • Introduction

Buildings are compartmented to delay the spread of fire from one area to another. The compartments are usually linked by doors to allow for passage of 'traffic' around the building. Doorsets have two important functions in a fire, when closed they form a barrier to prevent fire spreading and when open they provide a means of escape.

## • Performance Requirements

The performance of timber doors is judged by subjecting them to the standard test procedure specified in BS 476 : Part 22. Tests are made on complete door assemblies, the door and frame with all the necessary hardware. They are then fixed in a wall representing their use in practice.

## • Intumescent Seals

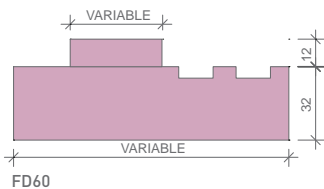
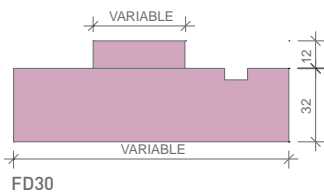
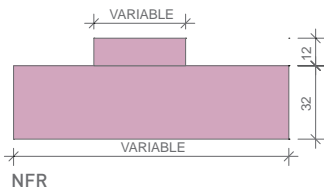
All dedicated fire doors providing a half hour or greater performance will be fitted with intumescent seals. These will be encased in a PVC sheath, of various colours. These seals are fitted in the door leaf edges or the frame to seal the head and long edges of the assembly. Intumescent seals expand under heating to seal the gaps between the door leaf and the frame and at the meeting stiles of pairs of doors.

## • Smoke Control

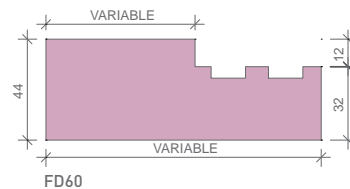
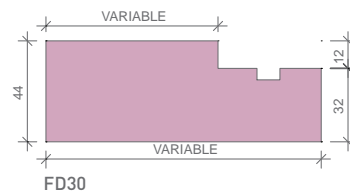
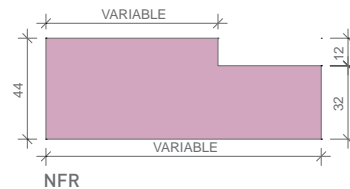
To achieve competent smoke control, the intumescent seals used in the jambs and head of the fire doors should be replaced with a corresponding combined intumescent/smoke seal.

## Door frame Designs and Specifications

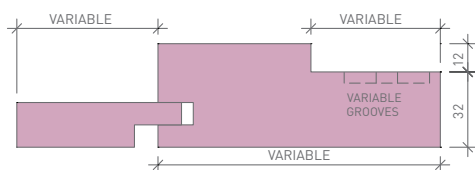
### • Solid frame with planted stops



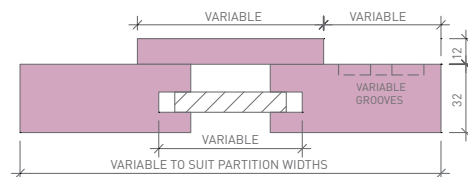
### • Solid frame with rebated stops



### • Frame with rebated stops and extension lining



### • 2 piece frame with jointing strip



FD30 frames can be constructed with Hardwood or Softwood with a minimum density of  $450\text{kg/m}^3$   
FD60 frames must be constructed with Hardwood with a minimum density of  $640\text{kg/m}^3$



### Fire Door Assemblies and Intumescent Requirements

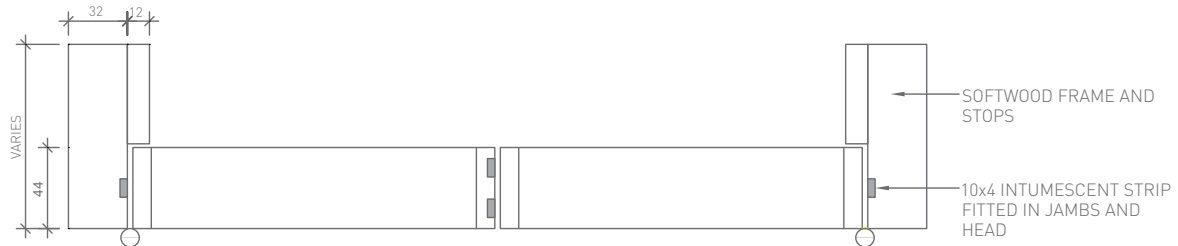
Below are details of our standard FD30 and FD60 doorset assemblies, showing typical frame sections and intumescent requirements.

#### FD30 Doorsets

##### Single Leaf Configuration



##### Double Leaf Configuration



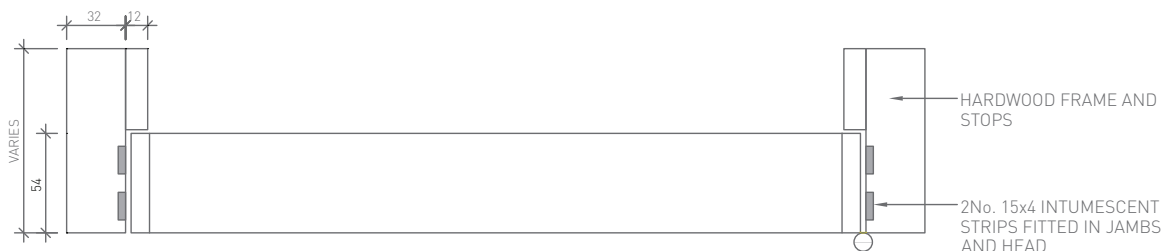
#### Intumescent Requirements

The standard intumescent provisions for FD30 doorsets consist of 1 No. 10x4 intumescent seals located centre thickness of the door leaf. The seals may be fitted to the frame or to the edge of the door.

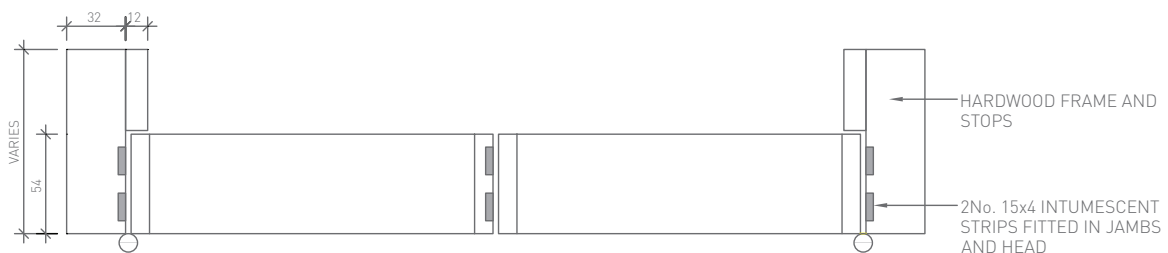
Double doors require 2 No. 10x4 intumescent seals fitted at the meeting stiles separated by a 12mm land.

#### FD60 Door Assemblies

##### Single Leaf Configuration



##### Double Leaf Configuration



#### Intumescent Requirements

The standard intumescent provisions for FD60 doorsets consist of 2 No. 15x4 intumescent seals separated by a 10mm land located centre thickness of the door leaf. The seals may be fitted to the frame or to the edge of the door. Double doors require 2 No. 15x4 intumescent seals fitted at the meeting stiles separated by a 10mm land.



[Click here to visit our website](#)

# FIREDOOR RANGE →

## : GLAZED APERTURES →

Dovetail are capable of forming apertures in doors with the use of CAD technology and CNC machinery. Many different sizes, designs, glass types and glazing systems are available depending on the application. For further information we recommend you contact our technical department.



**Dovetail Sales 01382 833890**



: GLASS SHAPES →

**Glazing Rules**

The recommended margins for locating the apertures are:

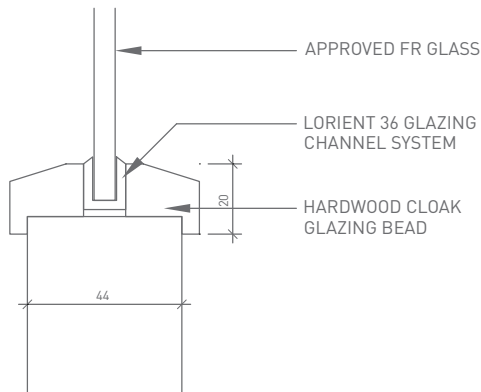
100mm minimum stiles and top rails.

200mm minimum from the bottom of the door

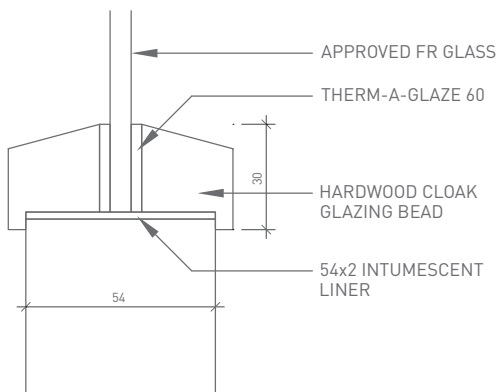
Where multiple apertures are required the minimum separation between apertures must not be less than 80mm.

Circular, triangular, square or rectangular shapes are acceptable provided that the glazing bead, intumescent system and fixing details are as proven acceptable in tests by the intumescent and glass manufacturers.

All safety glass fitted by Dovetail has been tested by the manufacturer to the BS 6206 : 1981.



FD30



FD60

