

DOMER



DOMER.CO
CONTIWALL CL30
GLAZING FAÇADES



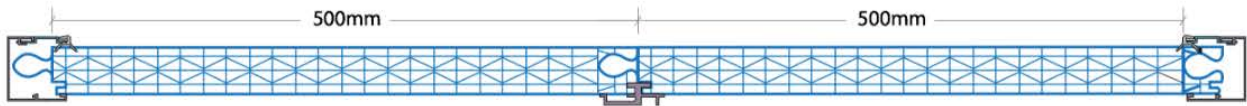
Domer Plastic Industries LLC

CONTIWALL CL30 PANEL

Domer ContiWall CL30 is polycarbonate glazing solution providing excellent light transmission and heat insulation, very quick and easy to install for any type of building.

Its light weight of only 3.5 kg per sqmtr assures excellent savings on the building structures.

It comes in four combination optional technologies of Solar Control, Crystal Effect, Light Defuse & Matt UV Panels



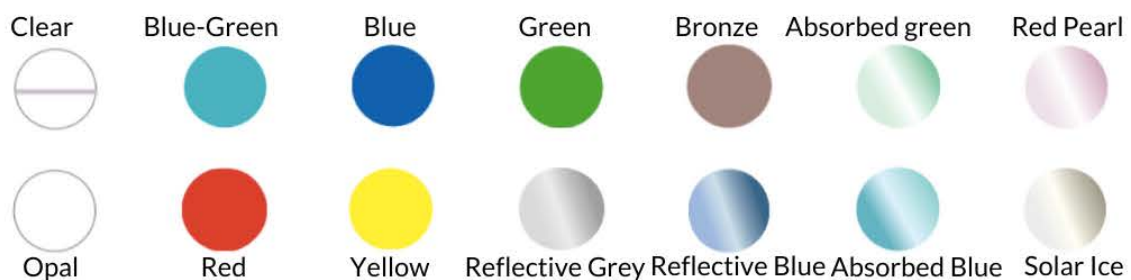
| | |
|----------------------------|--|
| Grade name | Domer ContiWall CL30 |
| Thickness | 30 mm |
| Weight | 3.5 Kg/m ² |
| Light Transmission (Clear) | 55% |
| U-Value | 1.25 W/m ² K |
| Panel sizes | Width: 500 mm X Length: Up to 12000 mm |
| Linear Thermal Expansion | 10 ⁻⁵ /C |
| Temperature range | -50 ± 120 °C |
| Tensile Strength | 62 Mpa |
| Elongation at break | >80% |

CHARACTERISTICS

- Seamless & Jointless appearance
- Quick installation
- Thermal Insulation (U-value 1.25 W/m²K)
- High light transmission
- Impact-resistant
- Light-weight & Easy to handle
- UV resistant
- Excellent air & Water tightness
- Excellent durability
- 10 years warranty
- Suitable for all types of buildings

APPLICATIONS

- Translucent cladding
- Architectural lighting
- Internal partitions
- Rooflights
- Canopies
- Facades



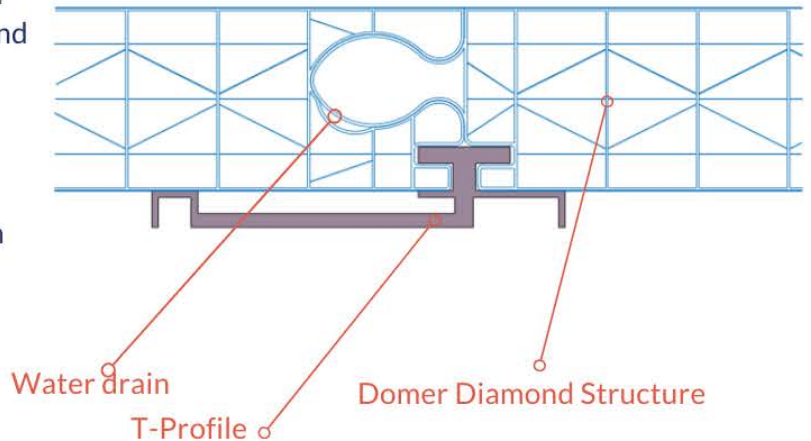
CONTIWALL CL30 PANEL

Domer ContiWall CL30 is produced by pure virgin high quality polycarbonate resin. The multi diamond structure design provides great stability and extreme thermal insulation.

Panel click/plug design assures very easy installation.

Domer ContiWall CL30 panels are widely used on Hangers, vertical facades, internal partitions, Lighting facades, canopies and high side windows.

We have the ability to tailor make special modifications to meet complex architectural requirements.



ADVANCED OPTIONS



DOMER CSR SOLAR CONTROL

Domer SCR solar control sheet resin modified technology (three different solar smart types). It can effectively block the infrared heat while let in the visible light, significantly reducing the building energy cost and creating more comfortable indoor environment.



DOMER CRYSTAL EFFECT

Domer - Multi wall polycarbonate glittering sheet using special BAYER modified bright master batch, while maintaining high light transmittance. Its inner walls particles change the glare light caused by refraction, resulting soft light and not dazzling sunlight.



DOMER LIGHT DIFFUSE

Domer Diffusive Sheet offers many light diffusion levels to help achieve the desired lighting qualities. Some designs, per example, may want a low level of diffusion to soften the edges of emitted light. Others may need more light diffusion to reduce direct glare. Having these diffusion options allow designers in achieving the lighting qualities they desire for a specific fixture.



DOMER MATT UV

Domer Matt-UV sheet using high end modified resin technology, reduces drastically the sheet damages caused by UV radiation. The Matt-UV coextruded on the surface of Domer sheet will not only protect the sheet from aging, but also prevents the glaring effect. Domer Matt-UV can be customized to different color to meet project requirements.

CONTIWALL CL30 PANEL

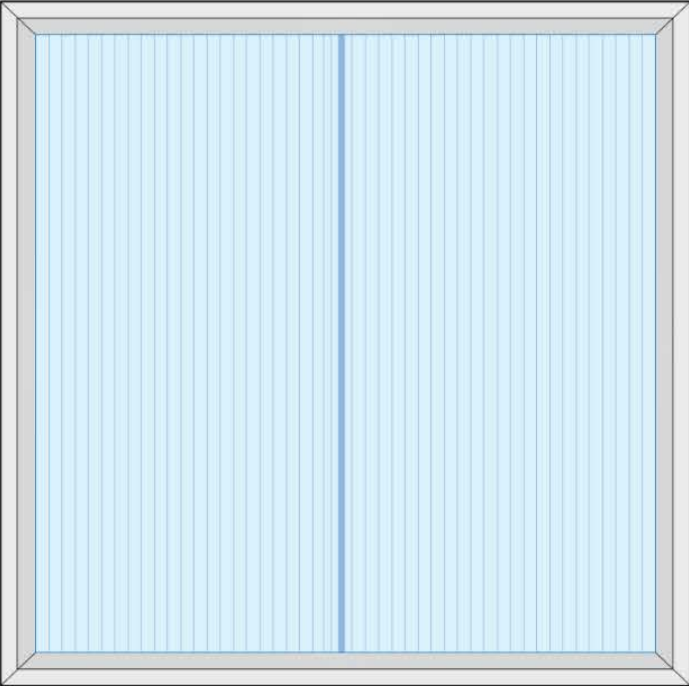
PROPERTIES

| Mechanical properties (23 °C/50 % r. h.) | | | | |
|--|--------------|-------------------|---------------------------|--------|
| Tensile modulus | 1 mm/min | MPa | ISO 527-1,-2 | 2400 |
| Yield stress | 50 mm/min | MPa | ISO 527-1,-2 | 65 |
| Yield strain | 50 mm/min | % | ISO 527-1,-2 | 6.3 |
| Nominal strain at break | 50 mm/min | % | ISO 527-1,-2 | > 50 |
| Stress at break | 50 mm/min | MPa | ISO 527-1,-2 | 70 |
| Strain at break | 50 mm/min | % | b.o. ISO 527-1,-2 | 130 |
| Tensile creep modulus | 1h | MPa | ISO 899-1 | 2200 |
| Tensile creep modulus | 1000 h | MPa | ISO 899-1 | 1900 |
| Flexural modulus | 2 mm/min | MPa | ISO 178 | 2400 |
| Flexural strength | 2 mm/min | MPa | ISO 178 | 98 |
| Flexural strain at flexural strength | 2 mm/min | % | ISO 178 | 7 |
| Flexural stress at 3.5 % strain | 2 mm/min | MPa | ISO 178 | 74 |
| Charpy impact strength | 23 °C | kJ/m ² | ISO 179-1eU | N |
| Charpy impact strength | -30 °C | kJ/m ² | ISO 179-1eU | N |
| Charpy impact strength | -60 °C | kJ/m ² | ISO 179-1eU | N |
| Charpy notched impact strength | 23 °C; 3 mm | kJ/m ² | ISO 7391/b.o. ISO 179-1eA | 80P |
| Charpy notched impact strength | -30 °C; 3 mm | kJ/m ² | ISO 7391/b.o. ISO 179-1eA | 14C |
| Izod notched impact strength | 23 °C; 3 mm | kJ/m ² | ISO 7391/b.o. ISO 180-A | 70P |
| Izod notched impact strength | -30 °C; 3 mm | kJ/m ² | ISO 7391/b.o. ISO 180-A | 20C(P) |
| Puncture maximum force | 23 °C | N | ISO 6603-2 | 5600 |
| Puncture maximum force | -30 °C | N | ISO 6603-2 | 6500 |
| Puncture energy | 23 °C | J | ISO 6603-2 | 60 |
| Puncture energy | -30 °C | J | ISO 6603-2 | 70 |
| Ball indentation hardness | | N/mm ² | ISO 2039-1 | 112 |

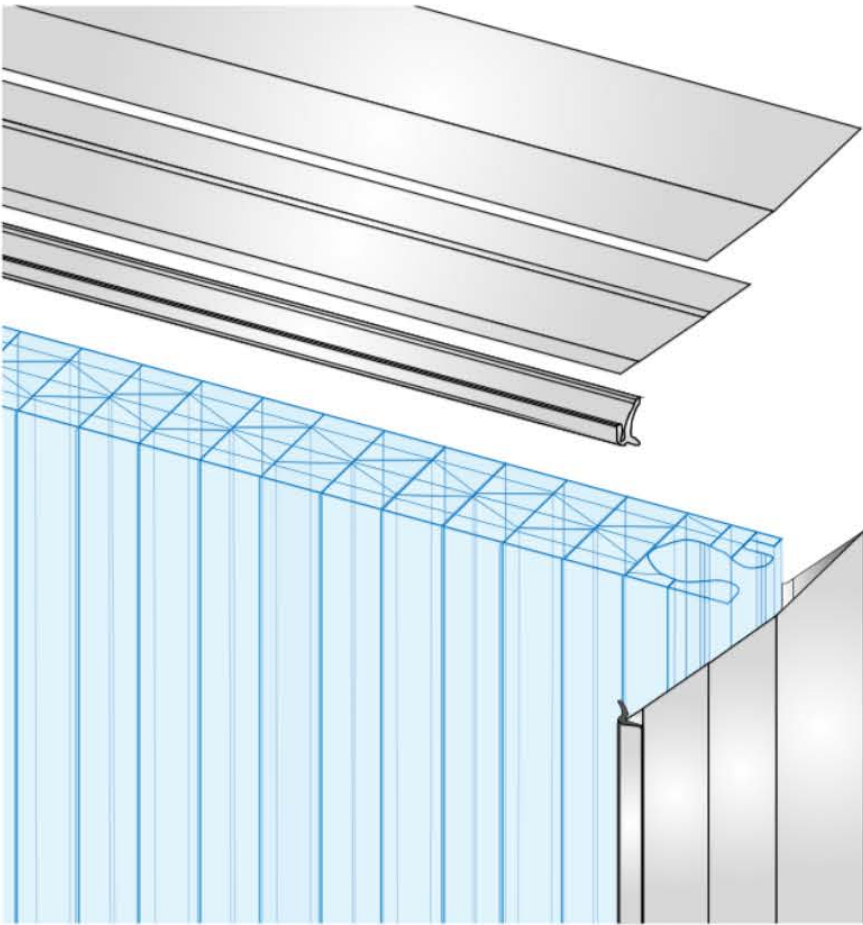
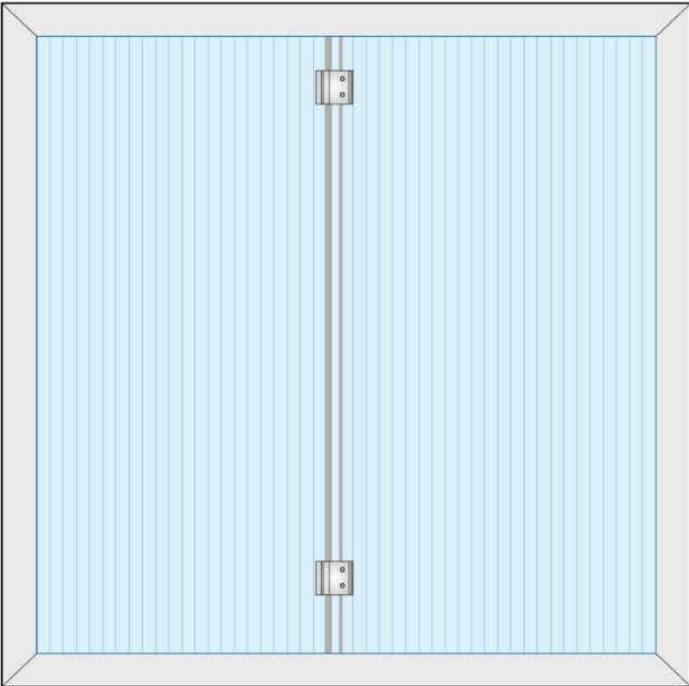
| Thermal properties | | | | |
|---|----------------|---------------------|----------------|----------|
| Glass transition temperature | 10 °C/min | °C | ISO 11357-1,-2 | 146 |
| Temperature of deflection under load | 1.80 MPa | °C | ISO 75-1,-2 | 127 |
| Temperature of deflection under load | 0.45 MPa | °C | ISO 75-1,-2 | 140 |
| Vicat softening temperature | 50 N; 50 °C/h | °C | ISO 306 | 146 |
| Vicat softening temperature | 50 N; 120 °C/h | °C | ISO 306 | 147 |
| Coefficient of linear thermal expansion, parallel | 23 to 55 °C | 10 ⁻⁴ /K | ISO 11359-1,-2 | 0.65 |
| Coefficient of linear thermal expansion, transverse | 23 to 55 °C | 10 ⁻⁴ /K | ISO 11359-1,-2 | 0.65 |
| Oxygen index | Method A | % | ISO 4589-2 | 28 |
| Resistance to heat (ball pressure test) | | °C | IEC 60695-10-2 | 139 |
| Relative temperature index (Tensile strength) [UL recognition] | 1.5 mm | °C | UL 746B | 125 |
| Relative temperature index (Tensile impact strength) [UL recognition] | 1.5 mm | °C | UL 746B | 115 |
| Relative temperature index (Electric strength) [UL recognition] | 1.5 mm | °C | UL 746B | 125 |
| Burning rate (US-FMVSS) | >=1.0 mm | mm/min | ISO 3795 | passed |
| Relative permittivity | 100 Hz | - | IEC 60250 | 3.1 |
| Relative permittivity | 1 MHz | - | IEC 60250 | 3 |
| Dissipation factor | 100 Hz | 10 ⁻⁴ | IEC 60250 | 10 |
| Dissipation factor | 1 MHz | 10 ⁻⁴ | IEC 60250 | 95 |
| Volume resistivity | | Ohm·m | IEC 60093 | 1.00E+14 |
| Surface resistivity | | Ohm | IEC 60093 | 1.00E+16 |
| Electrical strength | 1 mm | kV/mm | IEC 60243-1 | 34 |
| Comparative tracking index CTI | Solution A | Rating | IEC 60112 | 250 |
| Comparative tracking index CTI M | Solution B | Rating | IEC 60112 | 125M |
| Electrolytic corrosion | | Rating | IEC 60426 | A1 |

CONTIWALL CL30 PANEL

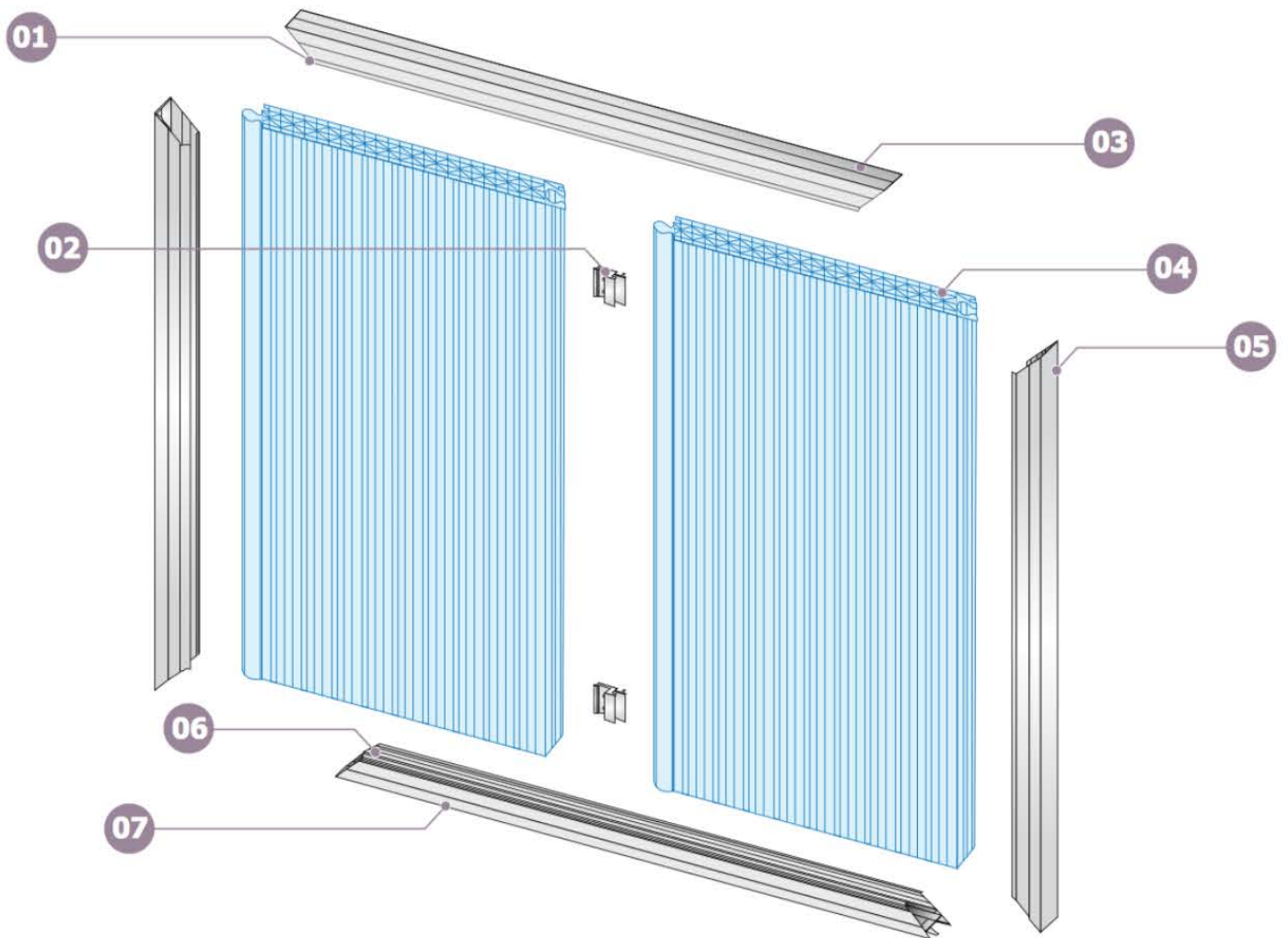
OUTER VIEW



INNER VIEW



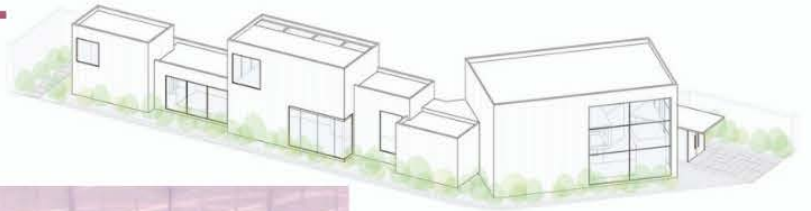
CONTIWALL CL30 PANEL



Domer Plastic Industries LLC reserves the right to alter the specification without any notice, the contents of this publication are indicative however studied carefully to be as accurate as possible, Domer Plastic Industries LLC & its subsidiary companies do not accept responsibility for errors or for information that is found to be misleading. Suggestions for, or description of, the end use or application of products or methods of working are for information only and Domer Plastic Industries LLC and its subsidiaries do not accept liability in respect thereof.

CONTIWALL CL30 PANEL

COMMERCIAL OFFICES



CONTIWALL CL30 PANEL

COMMERCIAL STORES



CONTIWALL CL30 PANEL

RESIDENTIAL BUILDINGS



CONTIWALL CL30 PANEL

SHOPPING MARKETS

