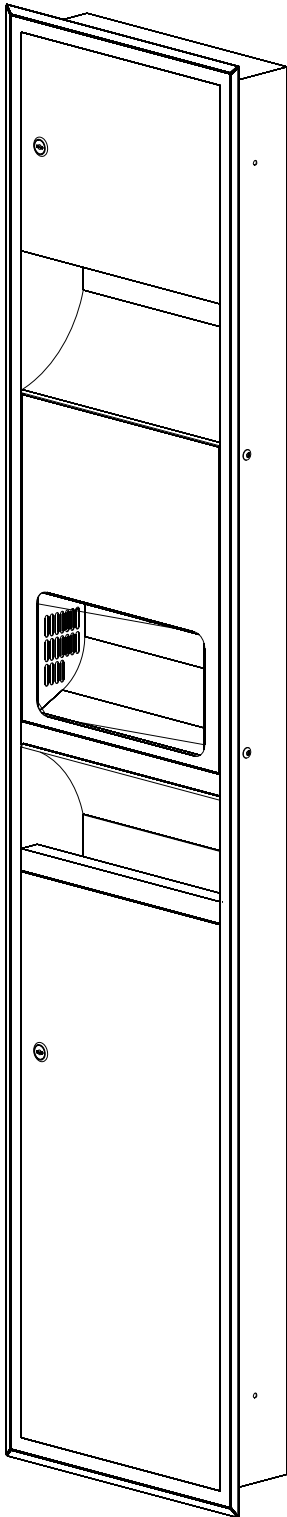


# BC 24SCA Dolphin Velocity Hand Dryer User Manual

Please read carefully before use





### Specification:

- Cabinet, manufactured from 0.8 mm (22 gauge), type-304 18/8 stainless steel with satin-finish.
- Door, manufactured from 1.2 mm (18 gauge), type-304 18/8 stainless steel with satin-finish, and tumbler locks keyed.
- Hand dryer, Model No BC2200SA  
2.4Kw, 230-240Vac.

Brush motor:

200W, 41500 R.P.M. 50Hz/60Hz.

Designed with 105°C (221°F) thermostat.

Heater assembly :

Designed with 87°C (189°F) thermostat.

Designed with 141°C (286°F) thermal cut-off.

Dryer shall deliver: 362 m<sup>2</sup>/h (212 CFM).  
50Hz/60Hz.

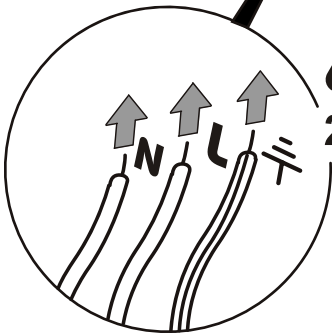
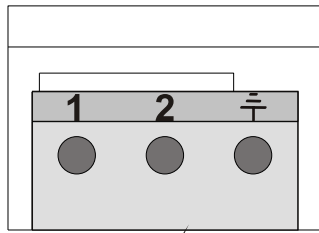
Air speed : 20.5 m/s. --50Hz/60Hz.

Sound level : 70±5dB

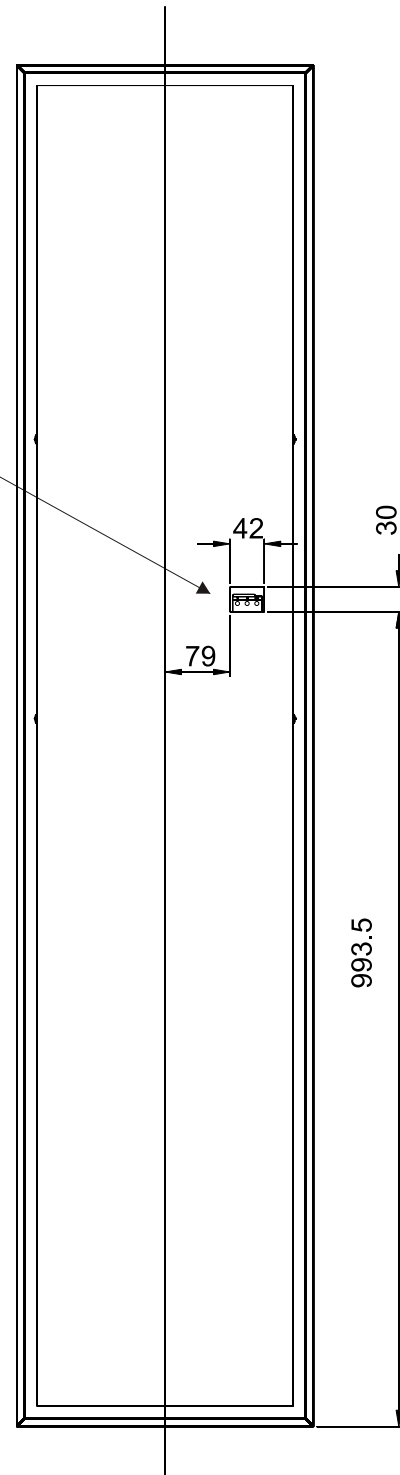
Approximate drying Time : 20-25 seconds

- Paper towel dispenser, capacity: 300-500 towels depending on the type and their folding.
- Waste receptacle, capacity: 18 L (4.7 Gal).
- Dimension: 362 x 1660 x 109 mm
- Rough wall opening: 322 x 1620 x 115 mm
- Weight : 20.2kg (44.4lbs) unpacked, 23.6kg (51.9lb) packed

## Terminal Block



220-240Vac 50Hz

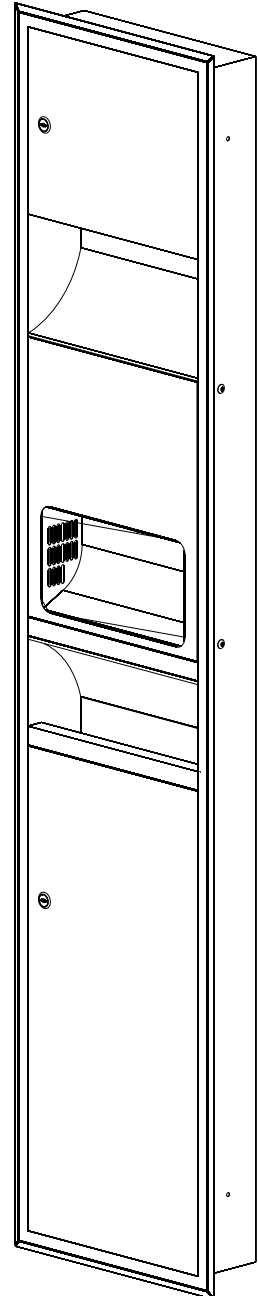
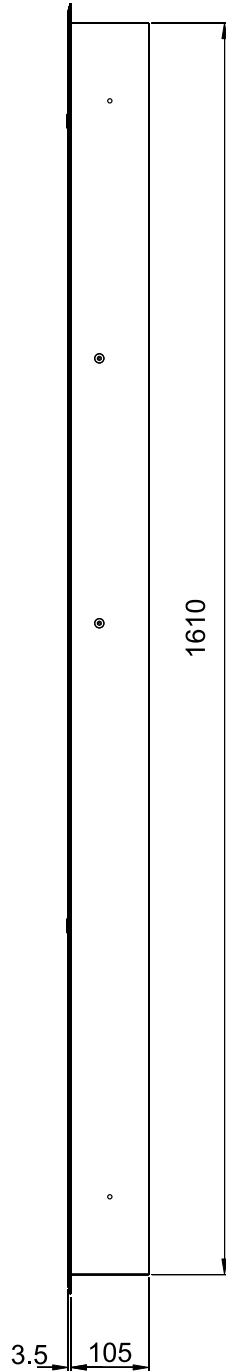
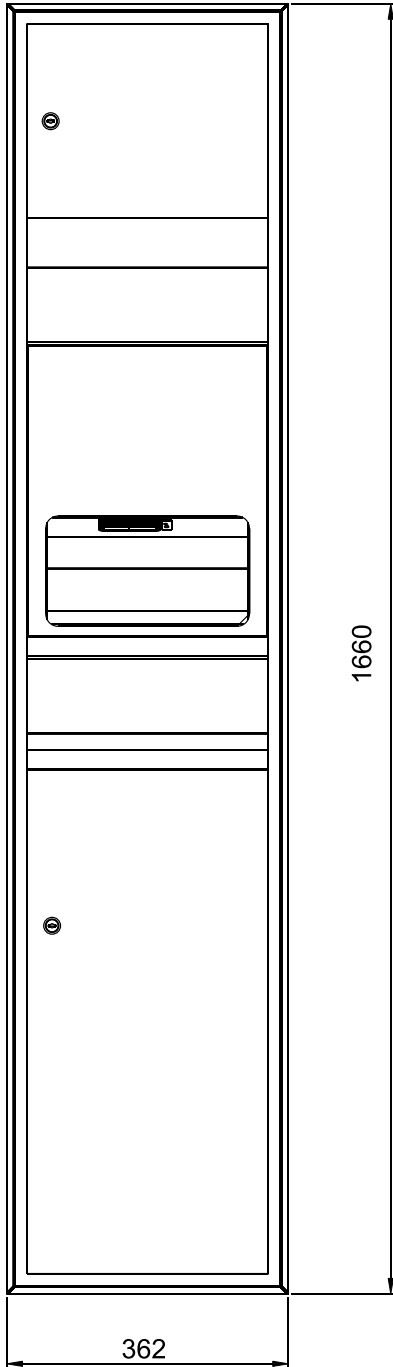
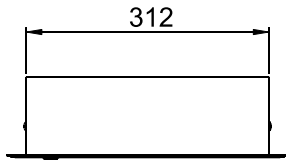


### Connections:

- Connect the neutral wire (colored black or blue) to the terminal block marked "1".
- Connect the live wire (colored red or brown) to the terminal block marked "2".
- Connect the ground wire (colored green and yellow) to the green screw marked "⏏".



**Bell-Chem Products Company**  
Haywood Way, Hastings, TN35 4PL  
Tel: 01424 202224  
info@dolphindispensers.co.uk  
www/dolphindispensers.co.uk



Dimensions in millimetres