

BC 2201 Dolphin Hot Air Hand Dryer

User Manual

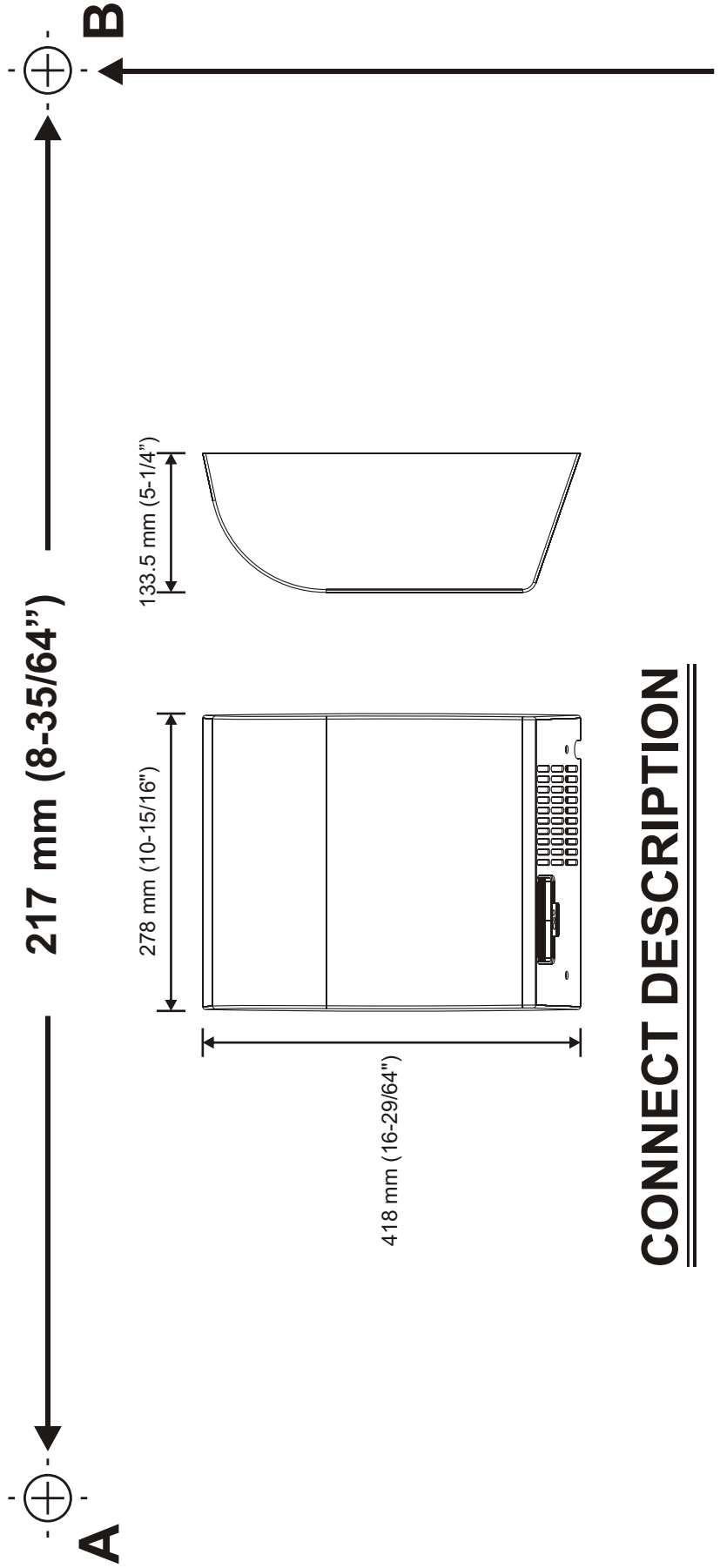
Please read carefully before use



DRYER MOUNTING TEMPLATE

Fix this card on the wall.


Drill 4 holes
(A. B. C. D. 8 mm (3") diameter:35 mm (1 3/8") depth.)



CONNECT DESCRIPTION

1. Secure the base plate on the wall provided.
2. The conduit in place by suitable 1/2 inch trade conduit fitting.
3. Connections:

3. Connections:

- A. Connect the live wire colored red (or brown) to The terminal block where marked "L".
- B. Connect the neutral wire colored black (or blue) To the terminal block where marked "N".
- C. Connect the earth wire colored green and yellow (or green, note bare earth wires should be sleeved With green and yellow or green sleeving) to the Ground washer where marked with the earth symbol. 

General safety information:

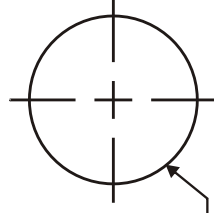
▲ WARNING *This product is intended for installation by a qualified service person. Use 1.5 mm² x 3 solid conductor for wiring.*

▲ WARNING *Disconnect power at the service breaker before installing or servicing. NOT FOR HOUSEHOLD USE - MAY CAUSE BURNS. " IMPROPRE A L'USAGE DOMESTIQUE - PUEUT OCCASIONNER."*

▲ DANGER *Failure to properly ground unit could result in severe electrical shock and/or death.*

▲ WARNING *All units must be supplied with a 3-wire service. The ground wire must be connected to the dryer's backplate.*

mm (10-5/16")



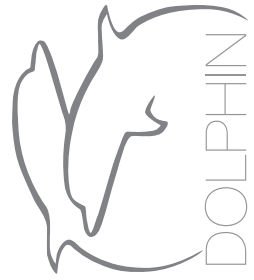
Ø22 mm (Ø7/8") FOR SUPPLY CABLE PREFERRED LOCATION



125 cm (49") from the ground is suitable

D

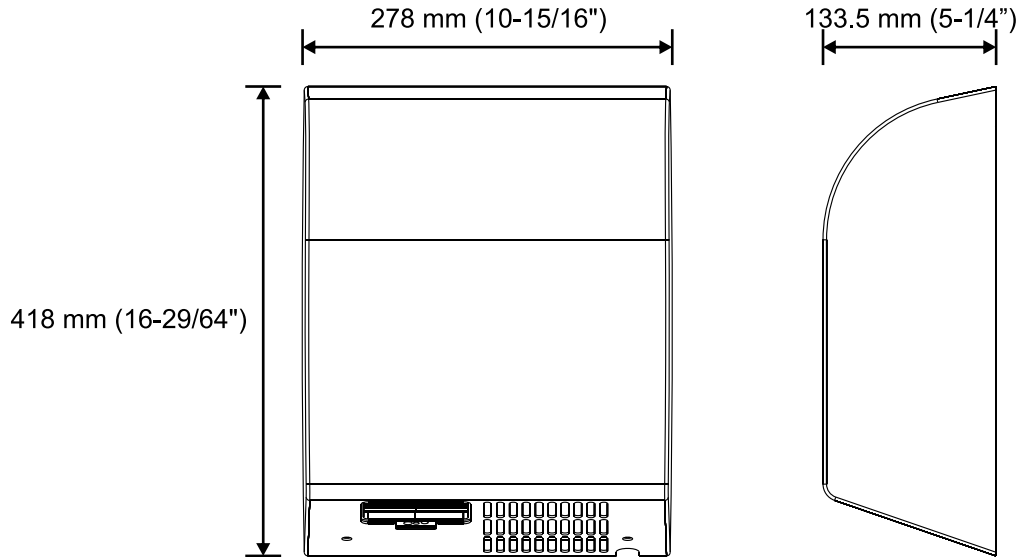
C



Hand drier

Operating Instructions and Parts Manual (Automatic)

Surface Mount



Operating Voltage	230-240 Vac,50/60Hz,2.2-2.4Kw
Warm Air Volume Output	314.5m ³ /h (185 CFM)
Warm Air Temp Output	60°C at ambient T=20°C
Motor Type	¼ HP, 7500 rpm, Brush Type, 200W, Dual Ball Bearings
Motor Thermal Protection	Auto Resetting Thermostat turns unit off at 105°C (221°F)
Heater Element	2200W
Heater Thermal Protection	Auto Resetting Thermostat turns unit off at 87°C (189°F) Thermal fuse cuts unit off at 141°C (286°F)
Drying Time	Less than 15 seconds
Circuit Operation	Infrared Automatic, self adjusting
Sensor Range	Adjustable;standard 18 cm± 2 cm
Time Protection	1 minutes auto shut off
Time Duration	2 seconds delayed turn off after last sensor read
Cover Type	Stainless steel, 1.5 mm thick
Cover Finish	Stain finished
Net Weight	4.5 kg [9.9 lbs]
Shipping Weight	5.5 kg [12.1 lbs]
Unit Size	W x H x D [278mm x 418mm x 133.5mm]

General safety information:

⚠ WARNING *This product is intended for installation by a qualified service person. Use 1.5 mm² solid conductor for wiring.*

⚠ DANGER *Failure to properly ground unit could result in severe electrical shock and/or death.*

⚠ WARNING *Disconnect power at the service breaker before installing or servicing.*
NOT FOR HOUSEHOLD USE - MAY CAUSE BURNS.
"IMPROPRE A L'USAGE DOMESTIQUE - PUET OCCASIONNER."

⚠ WARNING *All units must be supplied with a 3-wire service. The ground wire must be connected to the dryer's backplate.*

-- **NOTE:** Do not install dryer over washbasin --

Type Y attachment

If the power supply cord is damaged, it must be replaced by the manufacturer or its service agent or a similar qualified person in order to avoid a hazard.

Means for disconnection must be incorporated in the fixed wiring in accordance with the wiring rules

Installation

1. Make sure power supply breaker is switched off. Installation must be carried out in accordance with the current edition of the local wiring regulations code having jurisdiction. Installation should be performed only by a qualified electrician.
2. Place template against wall at desired height (see mounting height recommendations) and mark locations of 4 mounting holes and wire service entry at knockout (KO) location.
Note: For two or more dryers, dryers should be no closer than 24 inches (610 mm) on center.
3. Remove and retain 2 cover screws and cover.
4. Connect supply wires to terminal block where indicated and connect ground wire to base plate with ground screw

Connections:

- A. Connect the live wire (colored red or black) to the terminal block marked "L".
- B. Connect the neutral wire (colored white or blue) to the terminal block marked "N".
- C. Connect the ground wire (colored green or green and yellow) to the green screw marked "⊕").

Note that colors of live and neutral wires depend on voltage of supply service.

5. Replace cover. Do not over-tighten screws.

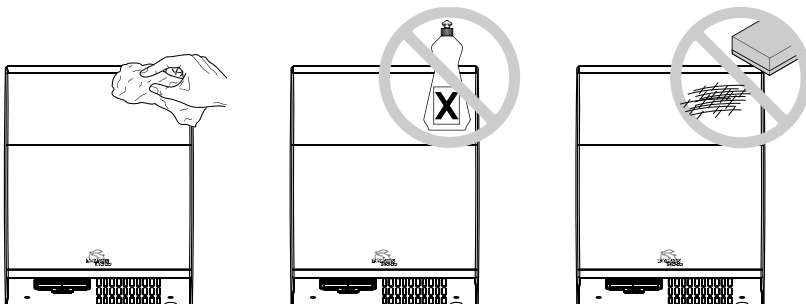
Recommended mounting heights - from bottom edge of dryer above finished floor (AFF)

Men	(40")	1000 mm
Women	(38")	960 mm
Children 4-7 years	(32")	812 mm
Children 8-10 years	(34")	860 mm
Children 11-13 years	(36")	910 mm
Children 14-16 years	(38")	960 mm
Handicaped	(34")	860 mm

Cleaning and Maintenance

Periodic cleaning of the unit is recommended to ensure optimum performance.

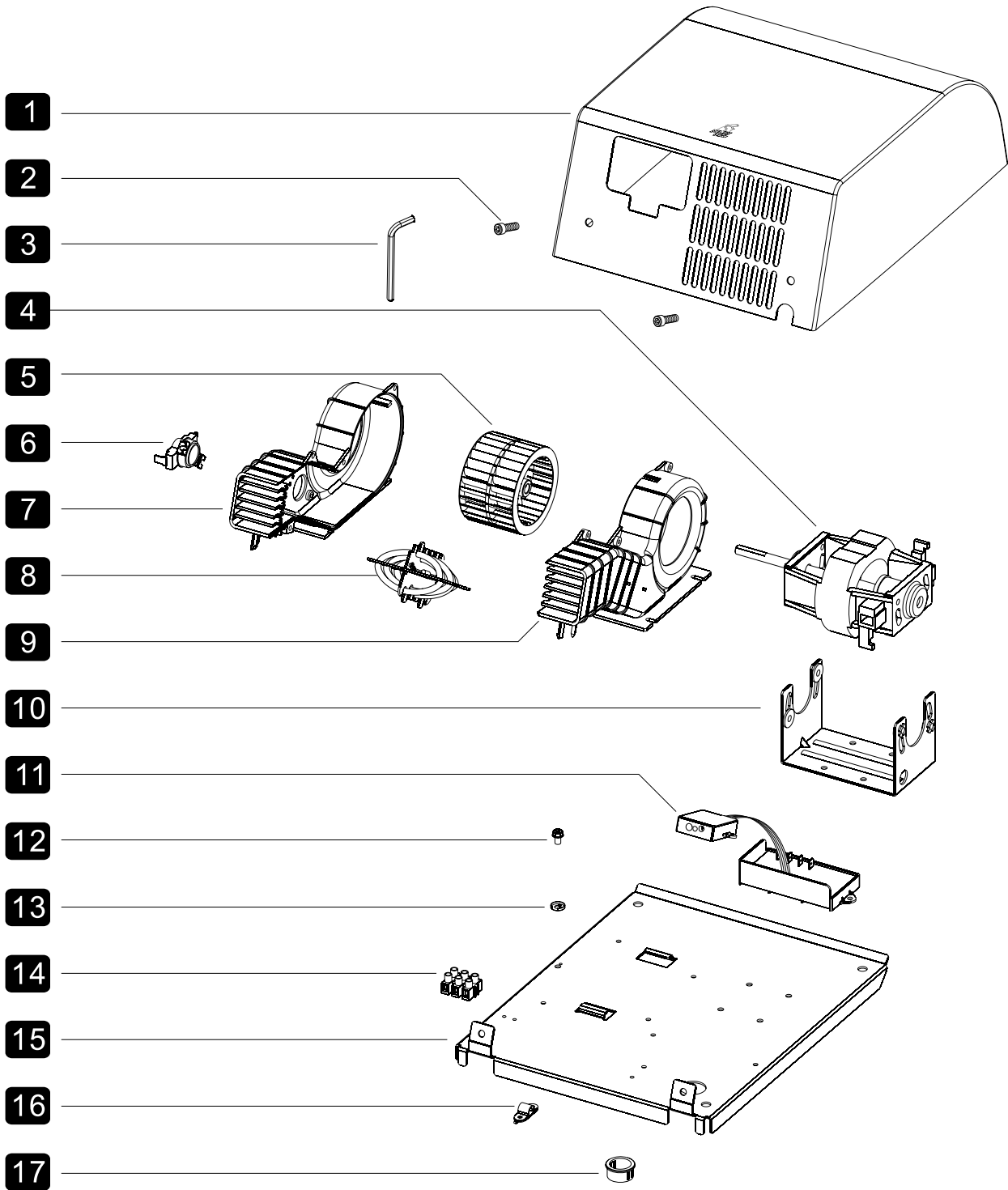
- Disconnect the electrical supply.
- Remove the two cover-mounting screws.
- Remove the cover.
- Clean all dust lint from the interior of the dryer.
- Wipe the cover with a damp cloth and mild cleaning solution. Do not Soak. Never use abrasives to clean the cover.
- Replace the cover. Do not over tighten the screws.



Operation

- No-touch operation
- Shake excess water from hands.
- Place hands under the outlet to start operation.
- Rub hands lightly and rapidly.
- Stops automatically after hands are removed.

Diagram



Reference Number	Description	Part #	Qty.
1	Satin Finished - Stainless Steel #4	C39-0003	1
2	Security Hex Screw	D01-007	2
3	Security Hex Wrench	D01-003	1
4	Brush Motor	E16-0002	1
5	Blower	C16-0001	1
6	Thermostat	E66-0001	1
7	Blower Housing A	A11-0012	1
8	Heater Element	T29-0005	1
9	Blower Housing B	A11-0013	1
10	Motor Bracket Assembly	T66-0001	1
11	Sensor Module + Circuit Board Module	F21-0008	1
12	Grounding Screw	D01-002	1
13	Grounding Washer	C01-003	1
14	Terminal Block	F01-005	1
15	Base Plate	C19-0034	1
16	Cable Clamp	A16-0004	1
17	Nylon Bushing	A16-0002	1



Bell-Chem Products Company

Haywood Way, Hastings, TN35 4PL

Tel: 01424 202224

info@dolphindispensers.co.uk

www/dolphindispensers.co.uk