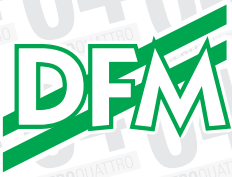


# 04

ZEROQUATTRO

## ASSEMBLAGGIO ASSEMBLING



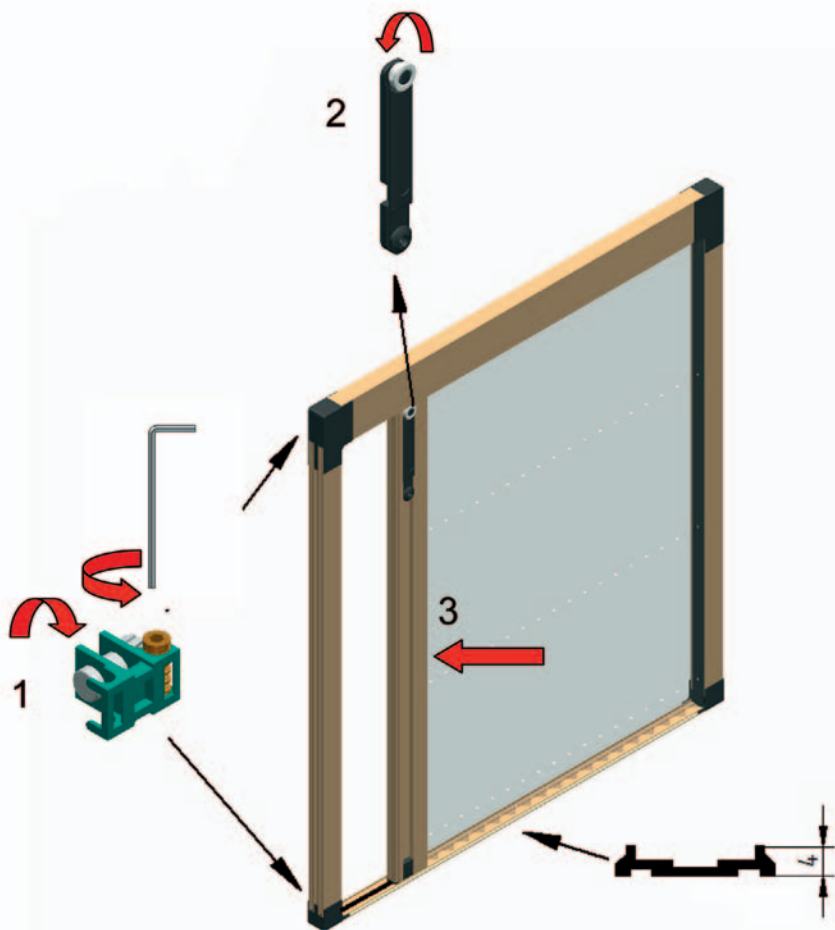
*Lucio J. Francesco*  
DESIGNER

## CARATTERISTICHE PRINCIPALI PRINCIPAL FEATURES

---

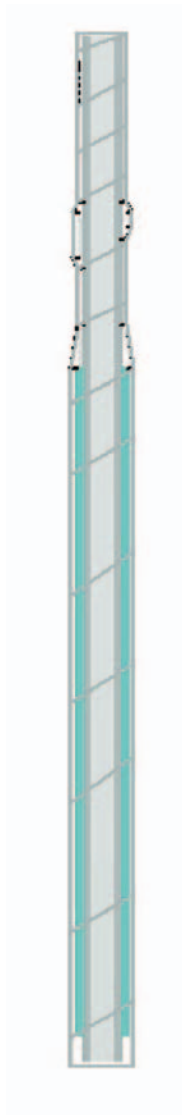
- 1) Regolazioni fili continua con "accordatore"
- 2) Pattino con ruota
- 3) Il barramaniglia non esce mai dalle guide

- 1) *Constant setting of cords with "tuner"*
- 2) *Guide with wheel*
- 3) *The handle bar never leaves the tracks*

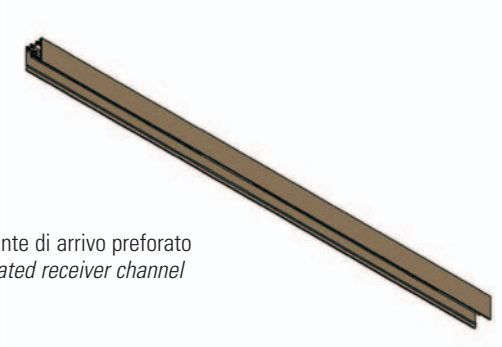


**COMPONENTI**  
***COMPONENTS***

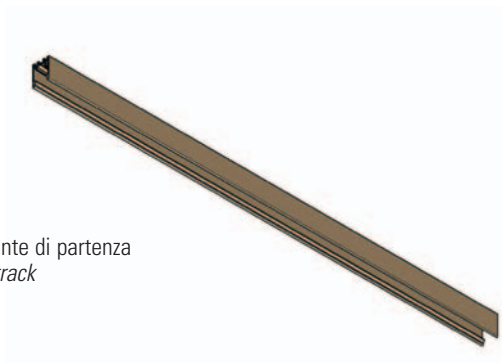
## **KIT RETE** **SCREEN KIT**



## **KIT PROFILI** **PROFILES KIT**



Montante di arrivo preforato  
*Perforated receiver channel*

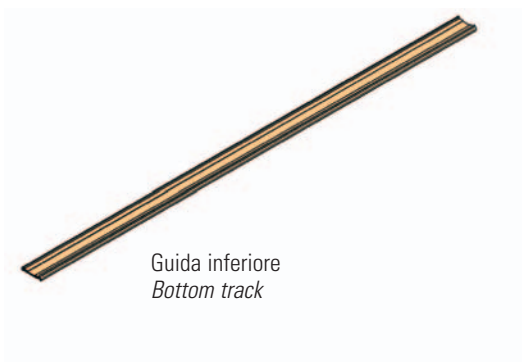
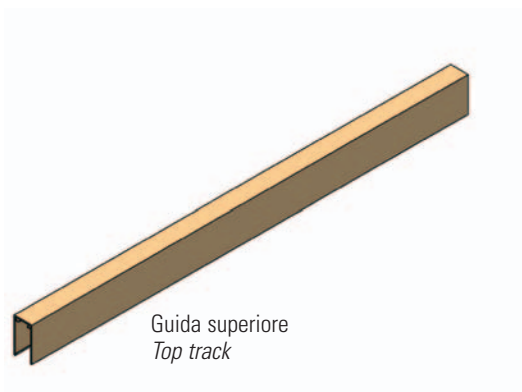


Montante di partenza  
*Start track*



Barramaniglia  
*Handle bar*

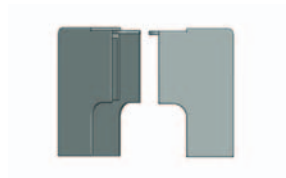
## KIT GUIDE TRACKS KIT



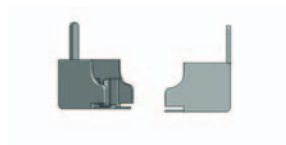
## KIT ACCESSORI ACCESSORIES KIT



Chiave per regolazione accordatori  
*Key for tuner regulation*



Angolari superiori  
*Top angles supports*



Angolari inferiori  
*Bottom angles supports*



Pattini, viti stop, inserto per avvitatore  
*Guide, screws, stop piece, power screwdriver bit*

**ASSEMBLAGGIO**  
***ASSEMBLY***

## LARGHEZZE DISPONIBILI AVAILABLE WIDTHS

---

- 1° da 70 cm a 100 cm
- 2° da 100 cm a 130 cm
- 3° da 130 cm a 180 cm
- Il prezzo di vendita è calcolato dalla misura di partenza, 70 cm, 100 cm e 130 cm
  
- *1<sup>st</sup> from 70 cm to 100 cm*
- *2<sup>nd</sup> from 100 cm to 130 cm*
- *3<sup>d</sup> from 130 cm to 180 cm*
- *The sale price is calculated on the departure measurements, 70 cm, 100 cm and 130 cm.*

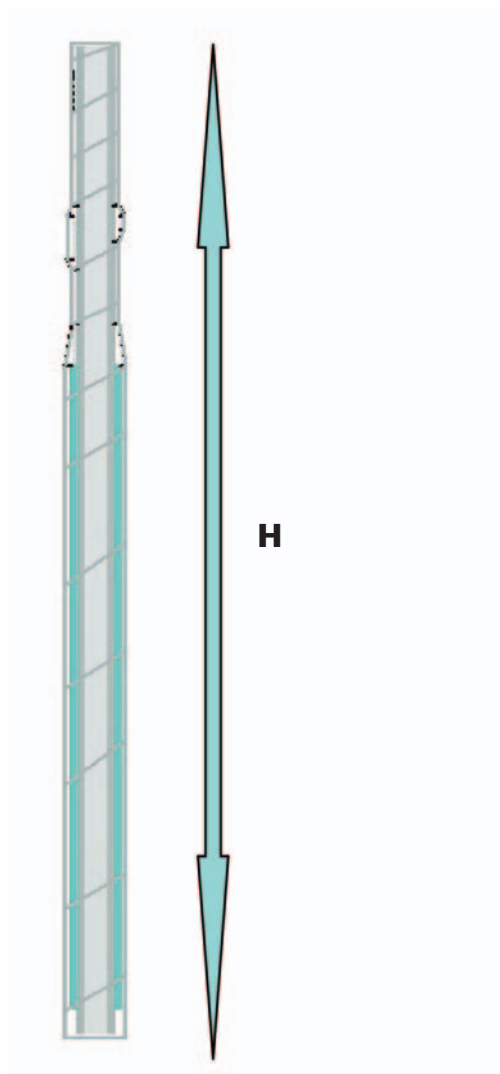


**ALTEZZE DISPONIBILI** (CON POSSIBILITÀ DI AVERE MISURE A RICHIESTA)  
**AVAILABLE HEIGHTS** (WITH POSSIBILITY OF HAVING MEASUREMENTS ON REQUEST)

---

- 1° - 275 cm
- 2° - 235 cm
- 3° - 220 cm
- 4° - 205 cm
- 5° - 175 cm
- 6° - 145 cm

- 1<sup>st</sup> - 275 cm
- 2<sup>nd</sup> - 235 cm
- 3<sup>d</sup> - 220 cm
- 4<sup>th</sup> - 205 cm
- 5<sup>th</sup> - 175 cm
- 6<sup>th</sup> - 145 cm

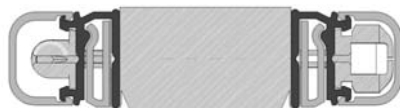
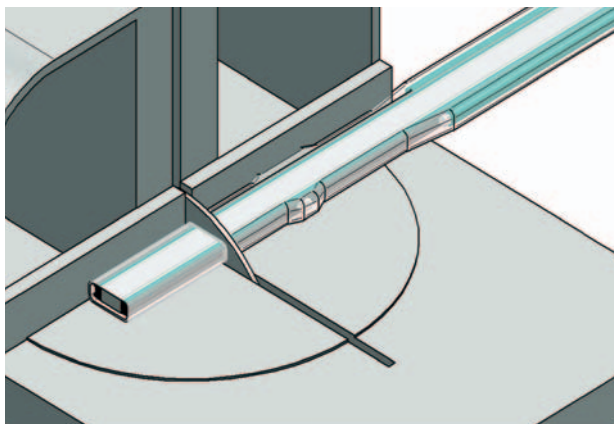


## 1° TAGLIO TAGLIO ALTEZZA A MISURA KIT RETE - RIDUCIBILITÀ 30 CM

**1<sup>ST</sup> CUT:** HEIGHT CUT AT NET KIT MEASUREMENT - CAN BE REDUCED BY 30 CM

- da cm 275 => a cm 235
- da cm 235 => a cm 205
- da cm 220 => a cm 190
- da cm 205 => a cm 175
- da cm 175 => a cm 145
- da cm 145 => a cm 115

- from cm 275 => to cm 235
- from cm 235 => to cm 205
- from cm 220=> to cm 190
- from cm 205 => to cm 175
- from cm 175 => to cm 145
- from cm 145 => to cm 115



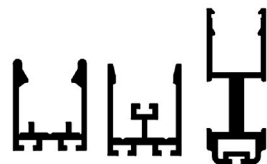
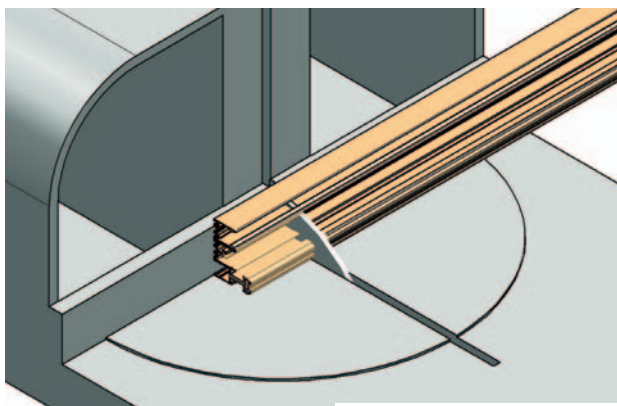
Scalare cm 1,3 dalla misura luce  
*Deduct 1.3 cm from the daylight size*

## 2° TAGLIO TAGLIO DEL KIT PROFILI

**2<sup>ND</sup> CUT:** PROFILES KIT CUT

- da cm 275 => a cm 235
- da cm 235 => a cm 205
- da cm 220 => a cm 190
- da cm 205 => a cm 175
- da cm 175 => a cm 145
- da cm 145 => a cm 115

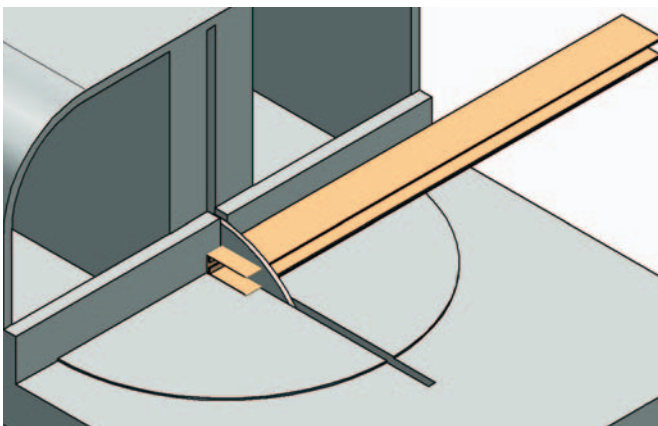
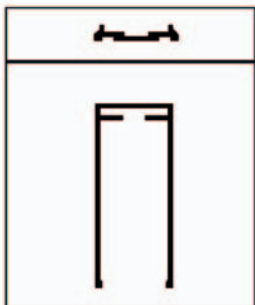
- from cm 275 => to cm 235
- from cm 235 => to cm 205
- from cm 220=> to cm 190
- from cm 205 => to cm 175
- from cm 175 => to cm 145
- from cm 145 => to cm 115



Scalare cm 1,5 dalla misura luce  
*Deduct 1.5 cm from the daylight size*

## 3° TAGLIO TAGLIO DEL KIT GUIDE

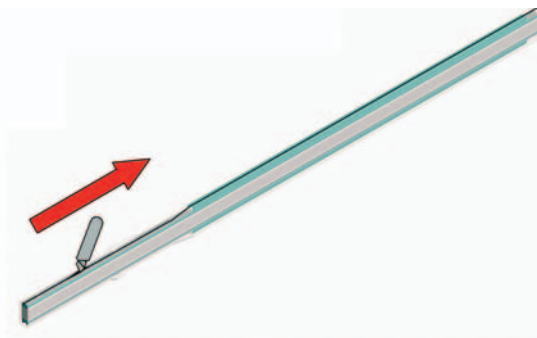
### 3<sup>RD</sup> CUT: TRACK KIT CUT



- Scalare cm 5 dalla misura luce
- *Take 5 cm from end measurement*

## APERTURA CONFEZIONE OPENING BOX

- Aprire la confezione servendosi di un "cutter" o "forbice", seguendo la linearità del porta tessuto
- Fare attenzione ai fili e alla rete
- *Open the box using a cutter or scissors, following the line of the door fabric*
- *Pay attention to cords and netting*



## SISTEMAZIONE FILI CORD FIXING

---

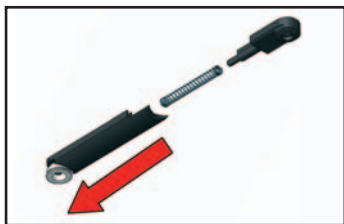
- Dopo l'apertura dell'imballo controllare che la rete scorra liberamente. Potrebbe essere necessario riordinare i fili tirandoli e consentendo così al pacchetto rete di compattarsi perfettamente
- *After opening the pack, check that the screen slides properly. It may be necessary to tidy up the cords by pulling them, so that the net pack forms a perfectly compact unit*



## **ASSEMBLAGGIO BARRAMANIGLIA** FASE 1 - PATTINI **HANDLE BAR ASSEMBLY** PHASE 1 - GUIDES

---

- Dopo il taglio, completare il barramaniglia con l'inserimento dei pattini - orientando la ruota verso l'alto - e della calamita
- *After cutting, complete the handle bar by inserting the guides - positioning the wheel towards the upper side - and the magnet*

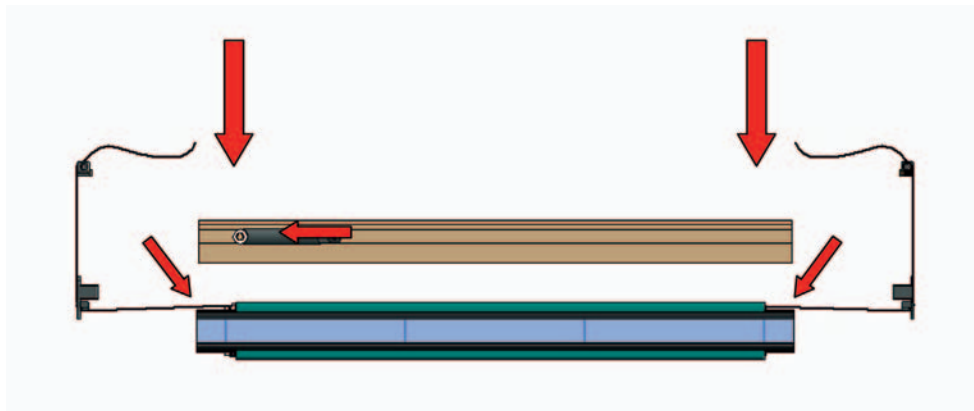


## **ASSEMBLAGGIO BARRAMANIGLIA** FASE 2 - PACCHETTO RETE **HANDLE BAR ASSEMBLY** PHASE 2 - SCREEN PACKAGE

---

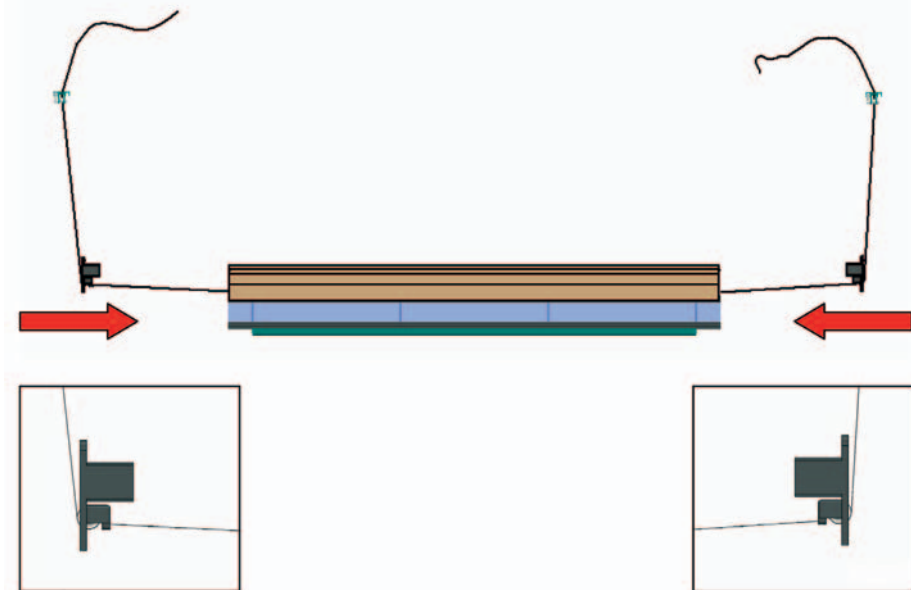
- Inserire il barramaniglia ad incastro sul pacchetto rete nel lato dove fuoriescono i fili  
-la ruota del pattino deve essere sempre orientata verso il lato dove è stato eseguito il taglio del pacchetto rete
- *The handle bar engages with the screen pack on the side where the cords emerge*  
- *the wheel on the guide must always be towards the side on which the screen pack was cut*

## Lato tagliato - *Cut side*



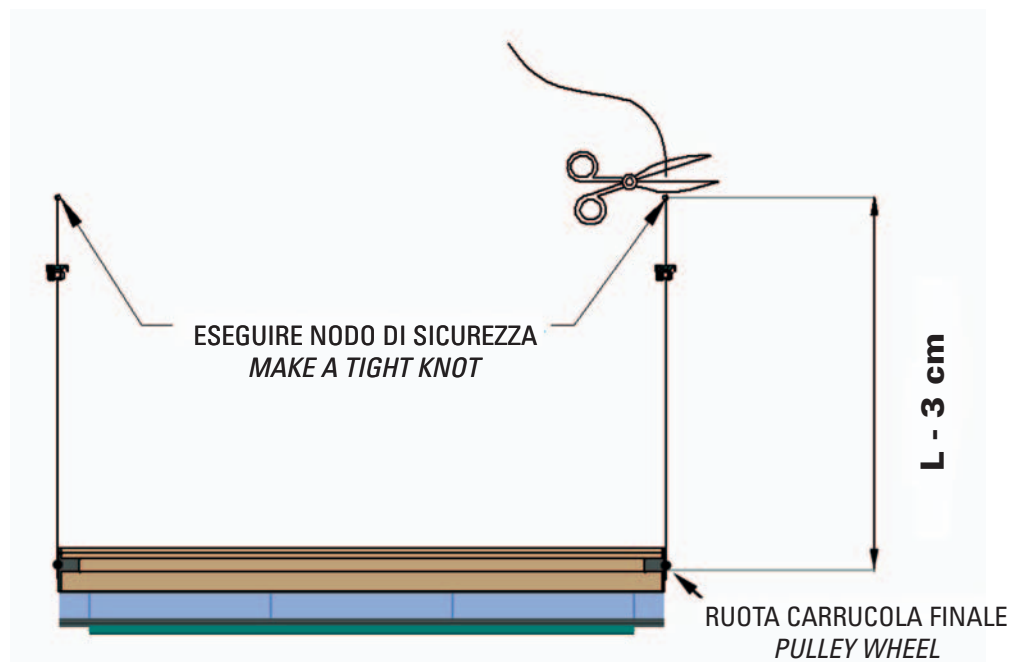
## INSERIRE LE CARRUCOLE FINALI *INSERT END PULLEYS*

- Inserire a pressione le carrucole finali nella loro sede
- *Press the end pulleys into their compartments*



## CALCOLO LARGHEZZA CALCULATING WIDTH

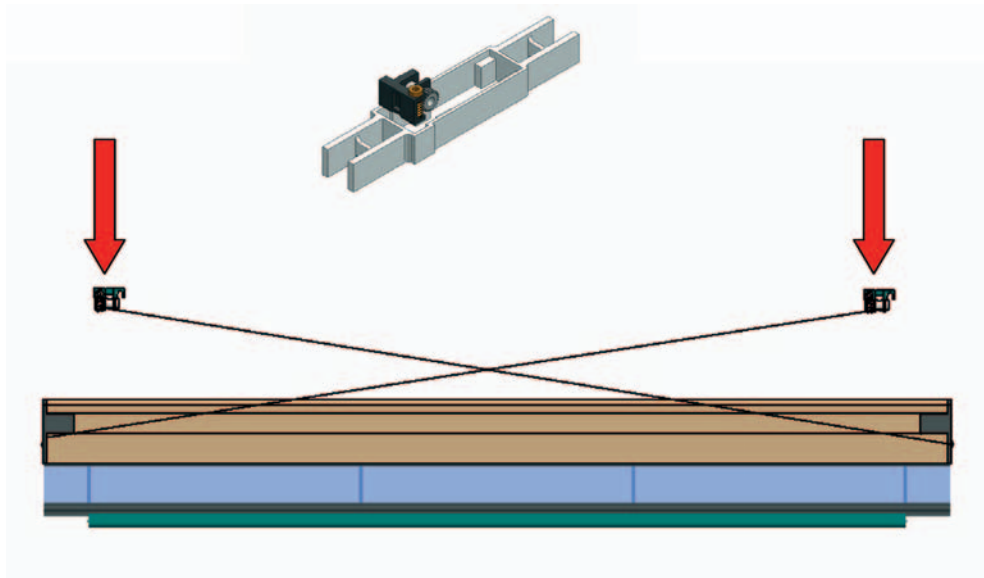
- Calcolare la larghezza della zanzariere dalla ruota della carrucola finale scalando 3 cm data (misura fissa)
  - Eseguire un nodo di sicurezza
  - Tagliare il filo in eccesso
- *Calculate the width of the insect screen from the pulley wheel subtracting 3 cm (fixed measurement)*
- *Make a tight knot*
- *Cut the excess cord*



## FISSAGGIO ACCORDATORI TUNERS FIXING

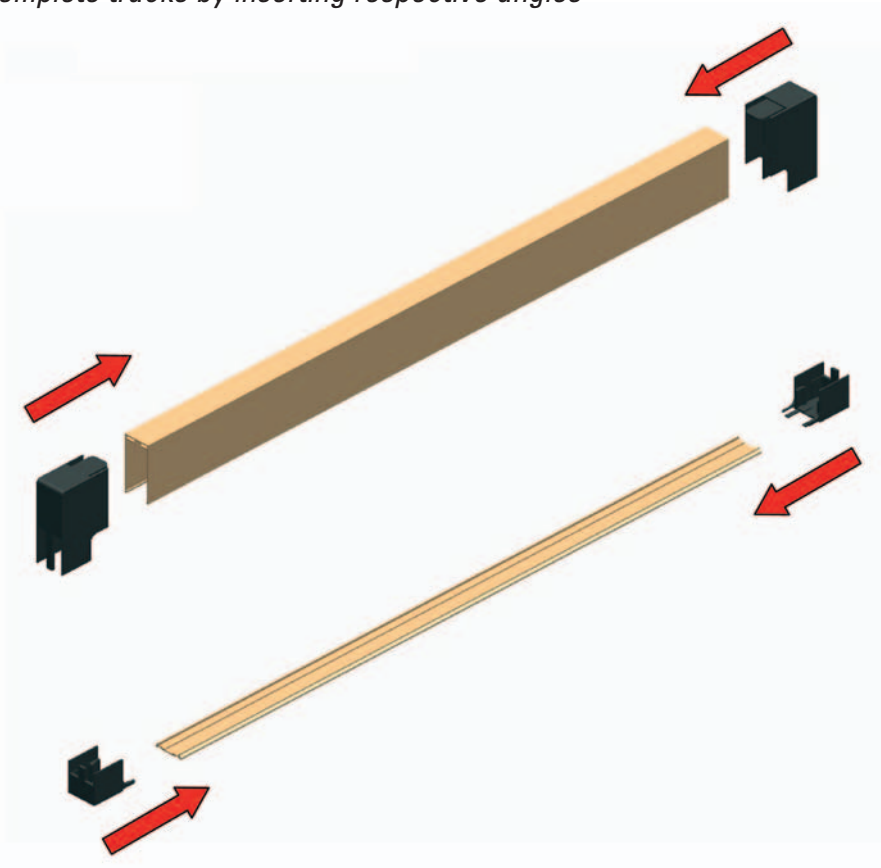
---

- Incrociando i fili disporre gli accordatori lungo l'asse della zanzariera e fissarli con l'apposito accessorio
- *Crossing the cords, place the turners on the axis of the screen and fasten them using the special accessory*



## ASSEMBLAGGIO DELLE GUIDE TRACKS ASSEMBLY

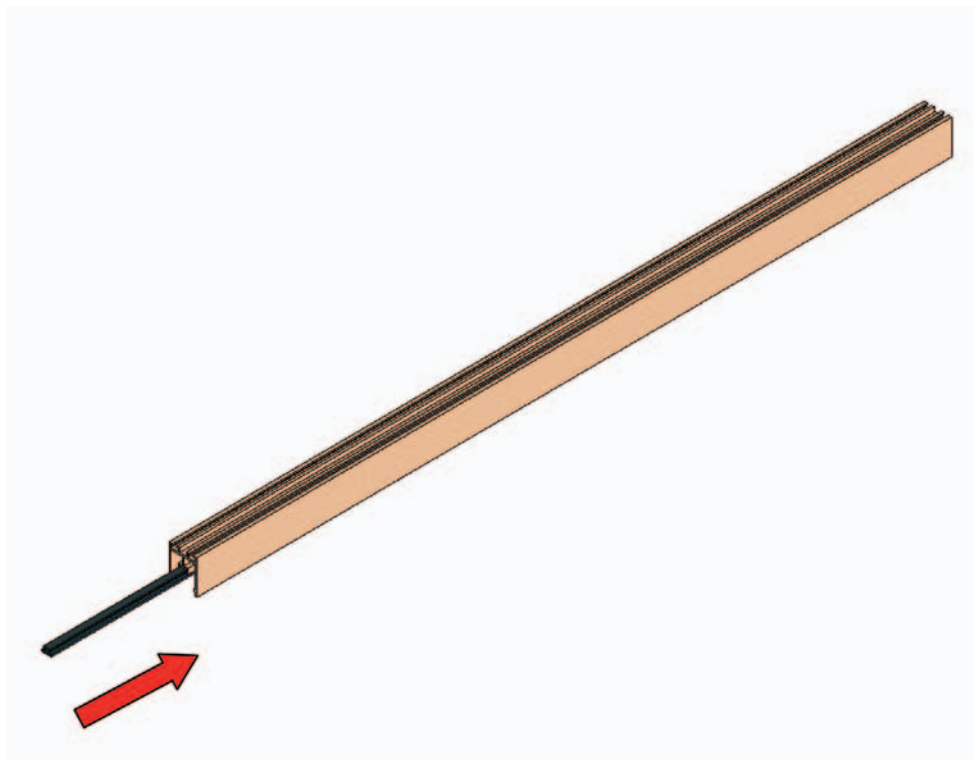
- Completare le guide inserendo i rispettivi angolari
- *Complete tracks by inserting respective angles*



## COMPLETAMENTO DEL MONTANTE *JAMB COMPLETION*

---

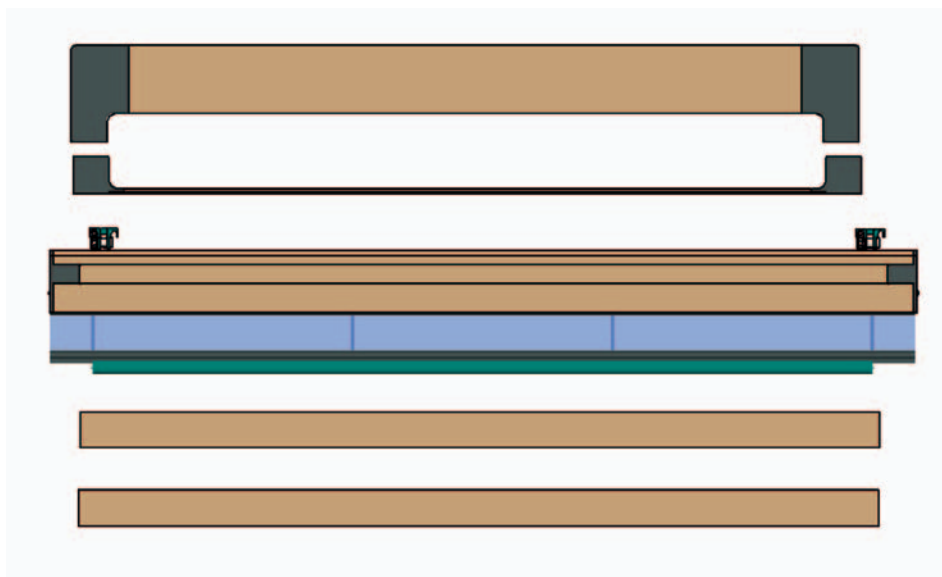
- Inserimento calamita
- *Insert magnet*



## IMBALLAGGIO PACKAGING

---

- Disporre le guide e i montanti laterali lungo l'asse della zanzariera e fissarli
- Completare la dotazione di serie con l'aggiunta del necessario per il montaggio (accessori e istruzioni)
- *Arrange the tracks and the side jambs along the insect screen axis and fix them*
- *Complete the standard equipment with the addition of the necessary equipment for assembly (accessories and instructions)*





**ZEROQUATTRO**

BREVETTO EUROPEO N. 1701641



**DIVISIONE  
TENDE TECNICHE  
E ZANZARIERE**

Via Thomas Edison, 19  
00015 Monterotondo Scalo (RM)

Tel. +39 06.906.94.23 r.a.

Fax +39 06.906.03.01

[www.dfmitalia.com](http://www.dfmitalia.com)

[www.dfmsrl.com](http://www.dfmsrl.com)

[info@dfmitalia.com](mailto:info@dfmitalia.com)

[dfm@difrancesco.it](mailto:dfm@difrancesco.it)