

Essentials





Essentials

Front Cover: Rear wall: Cement Pearl CS826-5020, Cement Pearl Scored CS830-5020, Cement Anthracite CS827-5020
Shower: Cement Tesela CS828-5020, Divider wall: Cement White Scored CS829-5020, Floor: Cement White CS826-4545
This page: Main walls: Lamina White Gloss CS874-4025, Floor: Lamina White Matt CS874-4545,
Behind the bath: Lamina Black Gloss CS876-4025



contents

Contemporary – the latest tile trends including concrete, cement and wood effects, plus a selection of modern textures

- 04-07 Montblanc
- 08-09 Downtown
- 10-11 Habitat
- 12-15 Cement
- 16-17 Lamina
- 18-19 Baltimore
- 20-21 Forest
- 22-23 Oregon
- 24-25 Ayren / Metallica
- 26-27 Hexagon

Stone-effect – the timeless beauty of natural stone, captured in practical porcelain and ceramic

- 28-29 Tramonto / Atessa Marfil / Thenac Stone
- 30-31 Coliseo
- 32-33 Flavia / Montana
- 34-35 Pluton
- 36-37 Origin / Nuez / Calatta / Sandal
- 38-39 Quebec
- 40-41 Slate / Outdoor Arenisca
- 42-43 Bodecia Beige / Soft Limestone / Maison Beige

Neutral – plain and subtly detailed tiles in a range of soft tones and a wide range of formats

- 44-45 Hareem
- 46-47 Africa
- 48-53 City Range
- 54-55 Sunlight / Dream Beige / Parisian White / Fantasy Black
- 56-57 Classic Whites / Biselado

Important Information

58-60

Price Guide

There are five price groups, as indicated by: **A B C D E**



5

CONTEMPORARY



Montblanc

Chic wall and floor tiles
for a distinguished style

Walls: Montblanc Blue CS1036-5020 and Montblanc White CS1034-5020
Floor: Montblanc Pearl CS1035-4545 and Montblanc Anthracite CS1037-4545

Montblanc

gloss glazed ceramic



B White
CS1034-5020 • 500 x 200 x 9mm
16.9kg per m²



B Anthracite
CS1037-5020 • 500 x 200 x 9mm
16.9kg per m²



B Pearl
CS1035-5020 • 500 x 200 x 9mm
16.9kg per m²



B Blue
CS1036-5020 • 500 x 200 x 9mm
16.9kg per m²



D Décor Pearl
CS1039-5020 • 500 x 200 x 9mm
17kg per m²



D Décor Blue
CS1038-5020 • 500 x 200 x 9mm
17kg per m²



D Smart Pearl (scored surface)
CS1041-3020 • 300 x 200 x 9mm
18kg per m²



D Smart Blue (scored surface)
CS1040-3020 • 300 x 200 x 9mm
18kg per m²



Montblanc Anthracite CS1037-5020

matt glazed porcelain



D Pearl
 CS1035-4545 • 450 x 450 x 10mm
 21.4kg per m²
 PEI Rating: 4



D Anthracite
 CS1037-4545 • 450 x 450 x 10mm
 21.4kg per m²
 PEI Rating: 2



Walls



Floors



Internal

Due to the varied nature of each collection, tile sizes are shown in proportion with others of the same range. Tiles from other ranges may be shown at a different scale. Please observe the stated dimensions for accurate sizing.



Downtown

Realistic concrete-style tiles
in five versatile colours



rectified glazed porcelain



C White Matt
 CS926-6060 • 600 x 600 x 10mm
 CS926-6030 • 600 x 300 x 10mm
 21.5kg per m²
 PEI Rating: 4



C Beige Matt
 CS925-6060 • 600 x 600 x 10mm
 CS925-6030 • 600 x 300 x 10mm
 21.5kg per m²
 PEI Rating: 4



C Mocha Matt
 CS927-6060 • 600 x 600 x 10mm
 CS927-6030 • 600 x 300 x 10mm
 21.5kg per m²
 PEI Rating: 4



C Grey Matt
 CS928-6060 • 600 x 600 x 10mm
 CS928-6030 • 600 x 300 x 10mm
 21.5kg per m²
 PEI Rating: 4

Grey Semi-Polished
 CS1033-6060 • 600 x 600 x 9mm
 21.5kg per m²
 PEI Rating: 4



C Anthracite Matt
 CS929-6060 • 600 x 600 x 10mm
 CS929-6030 • 600 x 300 x 10mm
 21.5kg per m²
 PEI Rating: 4



Habitat

Cool and contemporary ceramic tiles ideal for any modern space

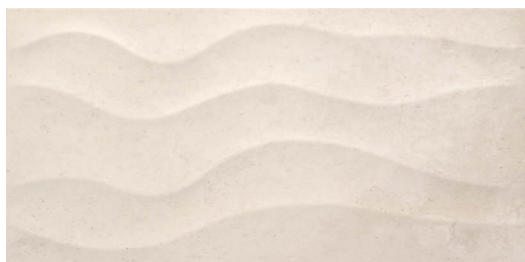
matt glazed ceramic



D White Non Rectified
CS898-6033 • 600 x 325 x 10mm
18kg per m²



D Cement Non Rectified
CS900-6033 • 600 x 325 x 10mm
18kg per m²



D White Wave
CS899-6033 • 600 x 325 x 10mm
18kg per m²



D Cement Wave
CS901-6033 • 600 x 325 x 10mm
18kg per m²





Cement

Three colour options with
a cement-like finish



Walls: Cement Pearl CS826-5020,
Cement White CS825-5020
Island: Cement Tesela CS828-5020
Floor: Cement Pearl CS826-4545

Cement

red bodied ceramic wall tiles



B White
CS825-5020 • 500 x 200 x 9mm • 16kg per m²
16kg per m²



B White Scored
CS829-5020 • 500 x 200 x 9mm
16kg per m²



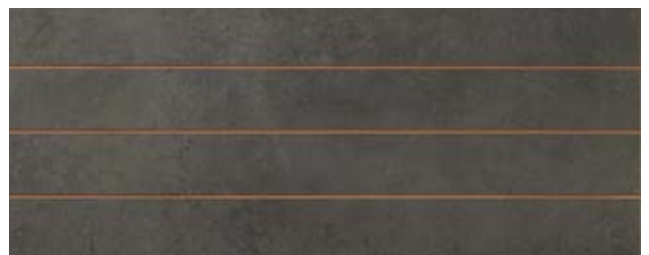
B Pearl
CS826-5020 • 500 x 200 x 9mm • 16kg per m²
16kg per m²



B Pearl Scored
CS830-5020 • 500 x 200 x 9mm
16kg per m²



B Anthracite
CS827-5020 • 500 x 200 x 9mm • 16kg per m²
16kg per m²



B Anthracite Scored
CS831-5020 • 500 x 200 x 9mm
16kg per m²



B Tesela (scored mosaic effect surface)
CS828-5020 • 500 x 200 x 9mm
16kg per m²



Rear wall: Cement Pearl CS826-5020, Cement Pearl Scored CS830-5020, Cement Anthracite CS827-5020
 Shower: Cement Tesela CS828-5020, Divider wall: Cement White Scored CS829-5020
 Floor: Cement White CS826-4545

red bodied ceramic floor tiles



B **White**
 CS825-4545 • 450 x 450 x 9mm
 22kg per m²



B **Pearl**
 CS826-4545 • 450 x 450 x 9mm
 22kg per m²



B **Anthracite**
 CS827-4545 • 450 x 450 x 9mm
 22kg per m²

Lamina

Concrete effect tiles in
three harmonious tones

gloss glazed ceramic



B **White**
CS874-4545 • 450 x 450 x 9mm
19.3kg per m²



B **Grey**
CS875-4545 • 450 x 450 x 9mm
19.3kg per m²



B **Black**
CS876-4545 • 450 x 450 x 9mm
19.3kg per m²



Main walls: Lamina White Gloss CS874-4025
Floor: Lamina White Matt CS874-4545
Behind the bath: Lamina Black Gloss CS876-4025

gloss glazed ceramic



B **White**
 CS874-4025 • 400 x 250 x 9mm
 16kg per m²



B **Grey**
 CS875-4025 • 400 x 250 x 9mm
 16kg per m²



B **Black**
 CS876-4025 • 400 x 250 x 9mm
 16kg per m²



Baltimore

Warm and adaptable with
a washed out finish

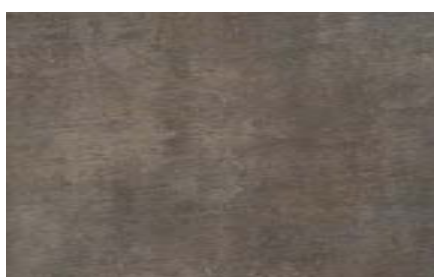
matt glazed ceramic



B Beige
CS833-4025 • 400 x 250 x 9mm
16kg per m²



B Gris
CS834-4025 • 400 x 250 x 9mm
16kg per m²



B Anthracite
CS835-4025 • 400 x 250 x 9mm
16kg per m²



B Anthracite
CS836-3333 • 330 x 330 x 9mm
16kg per m²





Forest

The beauty of wood
captured in porcelain

matt rectified glazed porcelain



E Natural
CS1000-9015 • 900 x 150 x 10mm
25kg per m²
PEI Rating: 4



E Driftwood
CS1001-9015 • 900 x 150 x 10mm
25kg per m²
PEI Rating: 4



E Copse
CS1003-9015 • 900 x 150 x 10mm
25kg per m²
PEI Rating: 3



E Ranch
CS1004-9015 • 900 x 150 x 10mm
25kg per m²
PEI Rating: 3



E Cabin
CS1005-9015 • 900 x 150 x 10mm
25kg per m²
PEI Rating: 3



E Smoked
CS1002-9015 • 900 x 150 x 10mm
25kg per m²
PEI Rating: 3

We recommend that wood-effect plank tiles are only fixed in a 70/30 brickbond pattern.

Nous recommandons d'utiliser les carreaux effet plancher de bois en effet "brique" 70/30 et non 1/2.

Wir empfehlen, dass die Holzdielen-Effekt-Fliesen ausschließlich in einem Versatz im Verhältnis von 70/30 verlegt werden.

We raden aan om de hout effect tegels in een 70/30 halfsteensgewijs verband te leggen, zodat de voeg tussen twee tegels niet precies in het midden van de tegel erboven ligt.

Please note, because of their size, these tiles are not in proportion to reference images of tiles in other sections.

Merci de noter qu'en raison de leur taille ces carreaux ne sont pas en proportion avec les autres images dans les autres sections.

Es ist zu merken, daß diese Fliesen in keinem Verhältnis zu der Abbildungen von Fliesen in anderer Ausschnitten stehen.

De tegels in deze afbeeldingen zijn niet afgebeeld in dezelfde schaal als de tegels afgebeeld in andere secties.



Walls



Floors



Internal

Oregan

Wood-effect tiles with a grooved surface texture

matt glazed porcelain



D Ceniza
CS1028-4444 • 436 x 436 x 9mm
22.9kg per m²
PEI Rating: 3



D Haya
CS1026-4444 • 436 x 436 x 9mm
22.9kg per m²
PEI Rating: 4



D Borneo
CS1027-4444 • 436 x 436 x 9mm
22.9kg per m²
PEI Rating: 2



D Wenge
CS1025-4444 • 436 x 436 x 9mm
22.9kg per m²
PEI Rating: 3



Walls



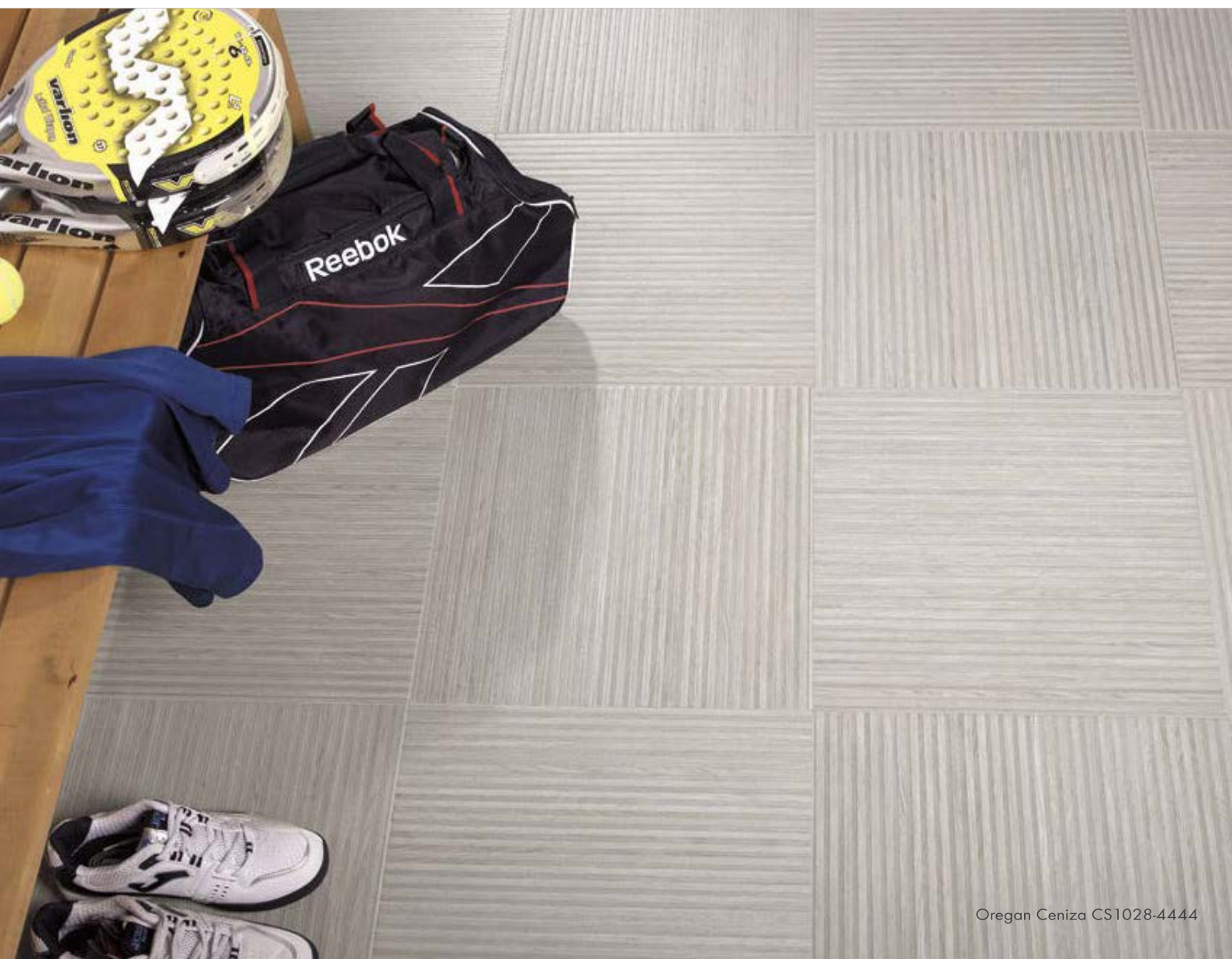
Floors



Internal



Oregan Wenge CS1025-4444



Oregan Ceniza CS1028-4444

Ayren

Modern matt glazed tiles with
a softly contoured surface

matt glazed ceramic



B Perla
CS1023-3232 • 316 x 316 x 8mm
18kg per m²
PEI Rating: 4
PTVW/TRRL: 59/52



B Cenzia
CS1024-3232 • 316 x 316 x 8mm
18kg per m²
PEI Rating: 2
PTVW/TRRL: 59/52



Walls



Floors



Internal





Metallica Silver CS893-6032

Metallica

Leave a lasting impression with these gold and silver effect tiles

metallic-effect glazed porcelain



- D Gold**
CS892-6032 • 600 x 320 x 10mm
CS892-6060 • 600 x 600 x 11mm
22.9kg per m²
PEI Rating: 3



- D Silver**
CS893-6032 • 600 x 320 x 10mm
CS893-6060 • 600 x 600 x 11mm
22.9kg per m²
PEI Rating: 2



Walls



Floors



Internal

Due to the varied nature of each collection, tile sizes are shown in proportion with others of the same range. Tiles from other ranges may be shown at a different scale. Please observe the stated dimensions for accurate sizing.



Caption: Caption



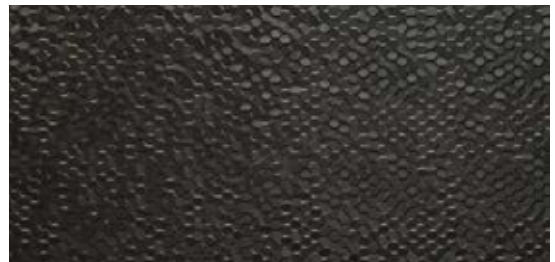
Hexagon

Space-age glamour
in timeless black
and white

gloss glazed porcelain



- D White**
CS880-6030 • 600 x 300 x 10mm
20kg per m²



- D Black**
CS881-6030 • 600 x 300 x 10mm
20kg per m²

Tramonto

A glamour to any space with these classic marble effect tiles

gloss glazed ceramic



B Almond
CS883-4025 • 400 x 250 x 9mm
16kg per m²
PEI Rating: 4



B Gris
CS999-4025 • 400 x 250 x 9mm
16kg per m²
PEI Rating: 4



gloss glazed porcelain



C Almond
CS883-4545 • 450 x 450 x 9mm
22kg per m²
PEI Rating: 4



C Gris
CS999-4545 • 450 x 450 x 9mm
22kg per m²
PEI Rating: 4



Wall: Tramonto Almond CS883-4025

Due to the varied nature of each collection, tile sizes are shown in proportion with others of the same range. Tiles from other ranges may be shown at a different scale. Please observe the stated dimensions for accurate sizing.

Atessa Marfil

Warm marble-effect
wall tiles

gloss glazed ceramic



B **Atessa Marfil**
CS882-4545 • 400 x 250 x 9mm
16kg per m²

 Walls  Internal



Atessa Marfil CS882-4545

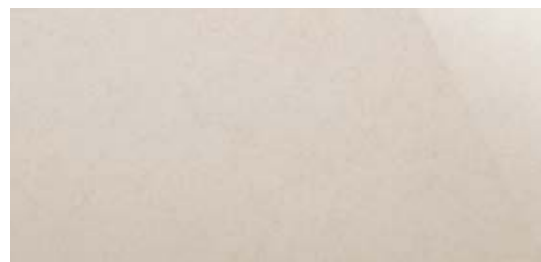


Thenac Stone CS556-6030

Thenac Stone

A gentle limestone-effect
tile in a high gloss finish

gloss glazed ceramic



A **Thenac Stone**
CS556-6030 • 600 x 300 x 9mm
19.7kg per m²

 Walls  Internal



Wall: Coliseo Beige CS616-4025, Piano Cenefa CS631-3005
Floor: Coliseo Beige CS617-3333

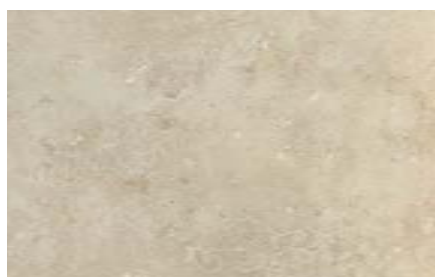
Coliseo

Practical travertine-effect tiles
in two complementary tones

glazed ceramic



C **Piano Cenefa**
CS631-3005 • 300 x 50 x 9mm



B **Beige**
CS616-4025 • 400 x 250 x 9mm
16kg per m²



B **Noce**
CS624-4025 • 400 x 250 x 8mm
16kg per m²

 Walls  Internal



B **Beige**
CS617-3333 • 330 x 330 x 9mm
18kg per m²
PEI Rating: 4



B **Noce**
CS625-3333 • 330 x 330 x 8mm
18kg per m²
PEI Rating: 4

 Walls  Floors  Internal

gloss glazed ceramic



Crema Wave
CS897-6032 • 600 x 316 x 10mm
18kg per m²



Crema
CS896-6032 • 600 x 316 x 10mm
18kg per m²



Beige Wave
CS895-6032 • 600 x 316 x 10mm
18kg per m²



Beige
CS894-6032 • 600 x 316 x 10mm
18kg per m²



Walls



Internal

Flavia

Beautiful travertien-effect tiles with flat and contoured surface options



Flavia Crema Wave CS897-6032



Feature Wall: Montana Anthracite
CS1042-2058

Montana

Striking mosaic-effect tiles
for a dramatic feature wall

matt glazed ceramic



B Beige
CS1043-2058 • 191 x 571 x 9mm
18.3kg per m²



B Anthracite
CS1042-2058 • 191 x 571 x 9mm
18.3kg per m²

34

STONE EFFECT



Pluton

Versatile matt tiles with rich marble-effect detail

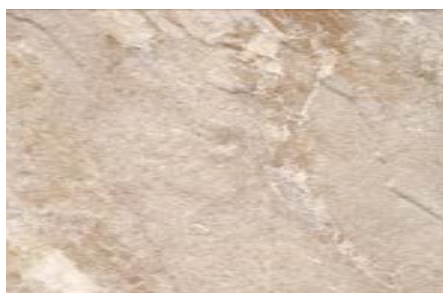


Pluton Gris Scored CS905-4832

matt glazed ceramic



C **Gris**
CS904-4832 • 480 x 316 x 10mm
18kg per m²



C **Arena**
CS906-4832 • 480 x 316 x 10mm
18kg per m²



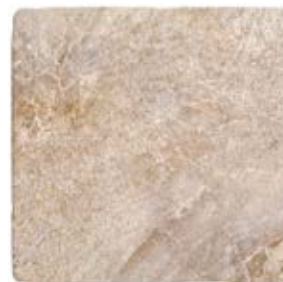
D **Gris Scored**
CS905-4832 • 480 x 316 x 10mm
18kg per m²



D **Arena Scored**
CS907-4832 • 480 x 316 x 10mm
18kg per m²



C **Gris**
CS904-3232 • 316 x 316 x 9mm
18kg per m²
PEI Rating: 4



C **Arena**
CS906-3232 • 316 x 316 x 9mm
18kg per m²
PEI Rating: 4



36

STONE EFFECT

Origin

Pillow-edged brick tiles
in four attractive tones



Origin Marfil CS911-4545

gloss glazed ceramic



C **Blanco**
CS908-4515 • 450 x 150 x 10mm
18kg per m²



C **Marfil**
CS911-4515 • 450 x 150 x 10mm
18kg per m²



C **Gris**
CS909-4515 • 450 x 150 x 10mm
18kg per m²



C **Negro**
CS910-4515 • 450 x 150 x 10mm
18kg per m²

Due to the varied nature of each collection, tile sizes are shown in proportion with others of the same range.
Tiles from other ranges may be shown at a different scale. Please observe the stated dimensions for accurate sizing.



Nuez, Calacatta and Sandal

gloss glazed ceramic



D Calacatta
CS1031-2010 • 200 x 100 x 6mm
12.7kg per m²



D Sandal Crema
CS1032-2010 • 200 x 100 x 6mm
12.7kg per m²



D Nuez Marfil
CS1029-2010 • 200 x 100 x 6mm
12.7kg per m²



D Nuez Beige
CS1030-2010 • 200 x 100 x 6mm
12.7kg per m²



Nuez Marfil
CS1029-2010



Calacatta
CS1031-2010



Sandal Crema
CS1032-2010



Quebec

The complete solution for
bathrooms, showers and
wet rooms

matt glazed porcelain



B Blanc
CS1016-6030 • 600 x 300 x 9mm
20.4kg per m²
PEI Rating: 4



E Blanc Mosaic Rectified
CS1016-MOS • 300 x 300 x 9mm
19kg per m²
PEI Rating: 4



B Beige
CS1017-6030 • 600 x 300 x 9mm
20.4kg per m²
PEI Rating: 4



E Beige Mosaic Rectified
CS1017-MOS • 300 x 300 x 9mm
19kg per m²
PEI Rating: 4



B Gris
CS1020-6030 • 600 x 300 x 9mm
20.4kg per m²
PEI Rating: 4



E Gris Mosaic Rectified
CS1020-MOS • 300 x 300 x 9mm
19kg per m²
PEI Rating: 4



B Olive
CS1019-6030 • 600 x 300 x 9mm
20.4kg per m²
PEI Rating: 4



E Olive Mosaic Rectified
CS1019-MOS • 300 x 300 x 9mm
19kg per m²
PEI Rating: 4



B Moka
CS1018-6030 • 600 x 300 x 9mm
20.4kg per m²
PEI Rating: 3



E Moka Mosaic Rectified
CS1018-MOS • 300 x 300 x 9mm
19kg per m²
PEI Rating: 3



Walls



Floors



Internal

Due to the varied nature of each collection, tile sizes are shown in proportion with others of the same range. Tiles from other ranges may be shown at a different scale. Please observe the stated dimensions for accurate sizing.



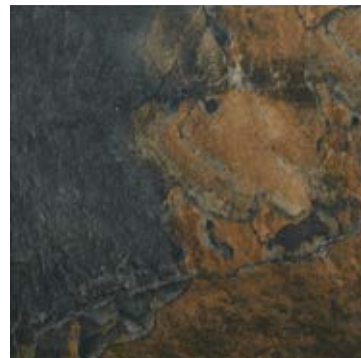
Slate CS1012-4545

Slate

The variety of natural stone,
perfectly captured in porcelain

Please note that, as pictured above, these tiles
vary considerably in colour and surface detail.

matt glazed porcelain



- D Slate**
CS1012-4545 • 450 x 450 x 9mm • 18.3 kg per m²
CS1012-3030 • 305 x 305 x 9mm • 18.4 kg per m²
CS1012-1515 • 150 x 150 x 9mm • 18.4 kg per m²
PEI Rating: 4



Walls



Floors



Internal

Due to the varied nature of each collection, tile sizes are shown in proportion with others of the same range. Tiles from other ranges may be shown at a different scale. Please observe the stated dimensions for accurate sizing.

Outdoor Arenisca

Sandstone-effect floor tiles for indoor and outdoor living

matt glazed porcelain



- C** **Outdoor Arenisca Non Rectified**
CS873-3333 • 330 x 330 x 9mm
18kg per m²
PEI Rating: 3
PTW/TRRL: 60/65



Walls



Floors



Internal /
External

Due to the varied nature of each collection, tile sizes are shown in proportion with others of the same range. Tiles from other ranges may be shown at a different scale. Please observe the stated dimensions for accurate sizing.





Bodecia CS779-6030

Bodecia Beige

A chic wall tile that has all the looks of a cross-cut travertine

gloss glazed ceramic



B **Bodecia Beige Rectified**
CS779-6030 • 600 x 300 x 10mm
19.6kg per m²



Soft Limestone and Maison Beige

Sleek finishes and effects of stone
for an understated look

glazed ceramic



A **Soft Limestone Rectified**
CS591-6030 • 600 x 300 x 10mm
18.8kg per m²



A **Maison Beige Rectified**
CS723-6030 • 600 x 300 x 10mm
17.4kg per m²



Walls



Internal





Walls: Hareem Light Grey CS686-5025, Hareem Dark Grey CS684-3333
Floor: Hareem Light Grey CS686-3333

Hareem

Contemporary tiles with a delicate linen-effect detail

matt glazed ceramic



A Bone
CS685-5025 • 500 x 250 x 8mm
14.95kg per m²

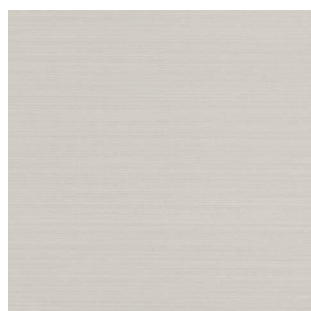
matt glazed porcelain



A Bone
CS685-3333 • 330 x 330 x 8mm
18.57kg per m²
PEI Rating: 34



A Light Grey
CS686-5025 • 500 x 250 x 8mm
14.95kg per m²



A Light Grey
CS686-3333 • 330 x 330 x 8mm
18.57kg per m²
PEI Rating: 4



A Dark Grey
CS684-5025 • 500 x 250 x 8mm
14.95kg per m²



A Dark Grey
CS684-3333 • 330 x 330 x 8mm
18.57kg per m²
PEI Rating: 3



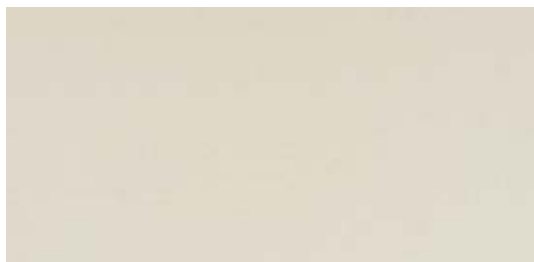
Africa

Smart and hard wearing for residential and commercial applications

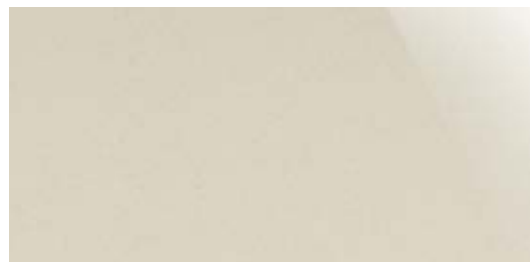


Wall: Africa Durban White Polished CS771-6030 and Cape Town Grey Polished CS773-6030
Floor: Africa Durban White Matt CS772-6060

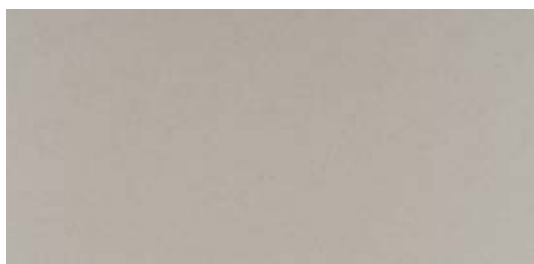
rectified full bodied porcelain



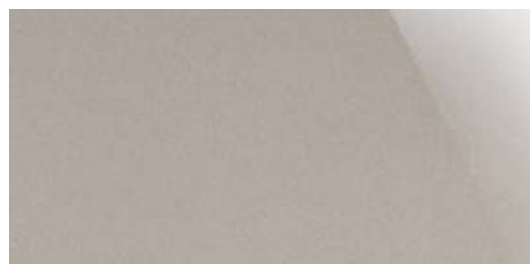
E Durban White Matt
 CS772-6030 • 600 x 300 x 10mm
 CS772-6060 • 600 x 600 x 10mm
 21.3kg per m²



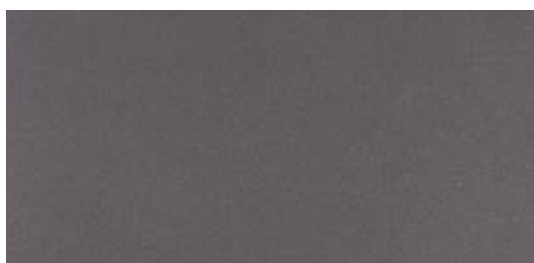
E Durban White Polished
 CS771-6030 • 600 x 300 x 9mm
 CS771-6060 • 600 x 600 x 9mm
 21.3kg per m²



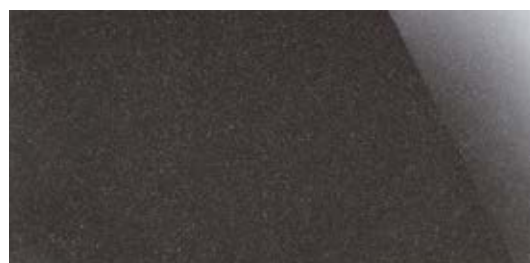
E Cape Town Grey Matt
 CS774-6030 • 600 x 300 x 10mm
 CS774-6060 • 600 x 600 x 10mm
 21.3kg per m²



E Cape Town Grey Polished
 CS773-6030 • 600 x 300 x 9mm
 CS773-6060 • 600 x 600 x 9mm
 21.3kg per m²



E Pretoria Anthracite Matt
 CS776-6030 • 600 x 300 x 10mm
 CS776-6060 • 600 x 600 x 10mm
 21.3kg per m²



E Pretoria Anthracite Polished
 CS775-6030 • 600 x 300 x 9mm
 CS775-6060 • 600 x 600 x 9mm
 21.3kg per m²



Walls



Floors



Internal

Due to the varied nature of each collection, tile sizes are shown in proportion with others of the same range. Tiles from other ranges may be shown at a different scale. Please observe the stated dimensions for accurate sizing.

48

NEUTRAL



City Range

Chic and fashionable, like
their Italian city name sakes



Wall: Parma Nebbia Polished CS921-6030 shown with glass borders Avon, Mississippi and Thames, from the Glassworks range



Floor: Verona Bianco Polished CS503-8080



Wall: Bari Mocha Polished CS505-6030
Floor: Bari Mocha Matt CS499-6030

50

NEUTRAL

City Range full bodied double loaded porcelain



D Genoa Natrale Matt Rectified
CS496-3030 • 300 x 300 x 10mm
CS496-6030 • 600 x 300 x 10mm
CS496-6060 • 600 x 600 x 10mm
22.9kg per m²



D Florence Beige Matt Rectified
CS495-3030 • 300 x 300 x 10mm
CS495-6030 • 600 x 300 x 10mm
CS495-6060 • 600 x 600 x 10mm
22.9kg per m²



D Genoa Natrale Polished Rectified
CS502-6030 • 600 x 300 x 9mm
CS502-6060 • 600 x 600 x 9mm
22.9kg per m²



D Florence Beige Polished Rectified
CS501-6030 • 600 x 300 x 9mm
CS501-6060 • 600 x 600 x 9mm
22.9kg per m²



Walls



Floors



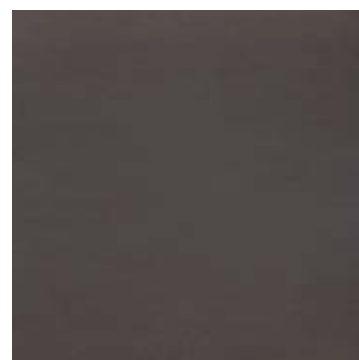
Internal



D Napoli Sabbia Matt Rectified
 CS494-3030 • 300 x 300 x 10mm
 CS494-6030 • 600 x 300 x 10mm
 CS494-6060 • 600 x 600 x 10mm
 22.9kg per m²



D Rimini Taupe Matt Rectified
 CS810-3030 • 300 x 300 x 10mm
 CS810-6030 • 600 x 300 x 10mm
 CS810-6060 • 600 x 600 x 10mm
 22.9kg per m²



D Bari Mocha Matt Rectified
 CS499-3030 • 300 x 300 x 10mm
 CS499-6030 • 600 x 300 x 10mm
 CS499-6060 • 600 x 600 x 10mm
 22.9kg per m²



D Napoli Sabbia Polished Rectified
 CS500-6030 • 600 x 300 x 9mm
 CS500-6060 • 600 x 600 x 9mm
 22.9kg per m²



D Rimini Taupe Polished Rectified
 CS811-6030 • 600 x 300 x 9mm
 CS811-6060 • 600 x 600 x 9mm
 22.9kg per m²



D Bari Mocha Polished Rectified
 CS505-6030 • 600 x 300 x 9mm
 CS505-6060 • 600 x 600 x 9mm
 22.9kg per m²

City Range full bodied double loaded porcelain



- D Verona Bianco Matt Rectified**
 CS497-3030 • 300 x 300 x 10mm • 22.9kg per m²
 CS497-6030 • 600 x 300 x 10mm • 22.9kg per m²
 CS497-6060 • 600 x 600 x 10mm • 22.9kg per m²
- E CS497-8080** • 800 x 800 x 12mm • 24kg per m²



- D Parma Nebbia Matt Rectified**
 CS922-6030 • 600 x 300 x 10mm
 CS922-6060 • 600 x 600 x 10mm
 22.9kg per m²



- D Turin Grigio Matt Rectified**
 CS498-3030 • 300 x 300 x 10mm
 CS498-6030 • 600 x 300 x 10mm
 CS498-6060 • 600 x 600 x 10mm
 22.9kg per m²



- D Verona Bianco Polished Rectified**
 CS503-6030 • 600 x 300 x 9mm • 22.9kg per m²
 CS503-6060 • 600 x 600 x 9mm • 22.9kg per m²
- E CS503-8080** • 800 x 800 x 12mm • 24kg per m²



- D Parma Nebbia Polished Rectified**
 CS921-6030 • 600 x 300 x 9mm
 CS921-6060 • 600 x 600 x 9mm
 22.9kg per m²



- D Turin Grigio Polished Rectified**
 CS504-6030 • 600 x 300 x 9mm
 CS504-6060 • 600 x 600 x 9mm
 22.9kg per m²



- D Novara Grafite Matt Rectified**
 CS1021-6030 • 600 x 300 x 10mm
 CS1022-6060 • 600 x 600 x 10mm
 22.9kg per m²



- D Novara Grafite Polished Rectified**
 CS1022-6030 • 600 x 300 x 9mm
 CS1022-6060 • 600 x 600 x 9mm
 22.9kg per m²



Walls



Floors



Internal



Bologna Granito Matt CS924-6060



D Bologna Granito Matt Rectified
CS924-6030 • 600 x 300 x 10mm
CS924-6060 • 600 x 600 x 10mm
22.9kg per m²



D Bologna Granito Polished Rectified
CS923-6030 • 600 x 300 x 9mm
CS923-6060 • 600 x 600 x 9mm
22.9kg per m²



Walls



Floors



Internal

Due to the varied nature of each collection, tile sizes are shown in proportion with others of the same range. Tiles from other ranges may be shown at a different scale. Please observe the stated dimensions for accurate sizing.

Sunlight and Dream Beige

Hard wearing porcelain tiles
for walls and floors

rectified full bodied porcelain



B **Polished Sunlight**
CS386-4545 • 450 x 450 x 8mm
19.9kg per m²



B **Natural Sunlight**
CS385-4545 • 450 x 450 x 8mm
19.9kg per m²



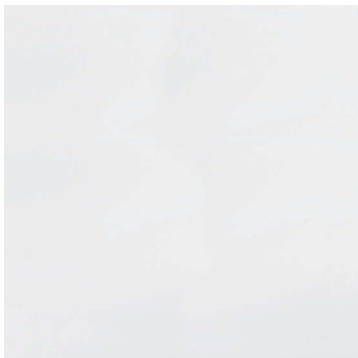
B **Dream Beige Polished**
CS523-4040 • 400 x 400 x 8mm
CS523-6030 • 600 x 300 x 9mm
CS523-6060 • 600 x 600 x 9mm
20.8kg per m²



Wall and Floor: Illusion White CS521-6060, CS521-6030 and Fantasy Black CS522-6030

Illusion White and Fantasy Black

polished rectified full bodied porcelain



- D Illusion White Rectified**
 CS521-3030 • 300 x 300 x 8mm
 CS521-4040 • 400 x 400 x 8mm
 CS521-6030 • 600 x 300 x 9mm
 CS521-6060 • 600 x 600 x 9mm
 22.2kg per m²



- E Fantasy Black Rectified**
 CS522-3030 • 300 x 300 x 8mm
 CS522-4040 • 400 x 400 x 8mm
 CS522-6030 • 600 x 300 x 9mm
 CS522-6060 • 600 x 600 x 9mm
 22.2kg per m²

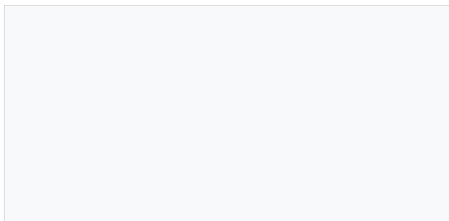


Baltic White CS780-9030

Classic Whites

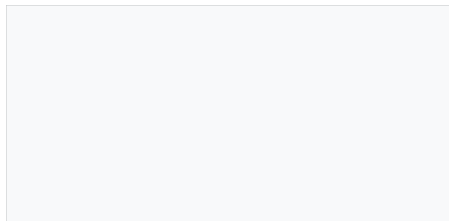
pure white ceramic wall tiles in a range of formats

glazed ceramic

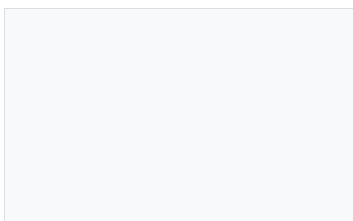


B Ice White Rectified Gloss
CS777-6030 • 600 x 300 x 10.2mm
18.8kg per m²

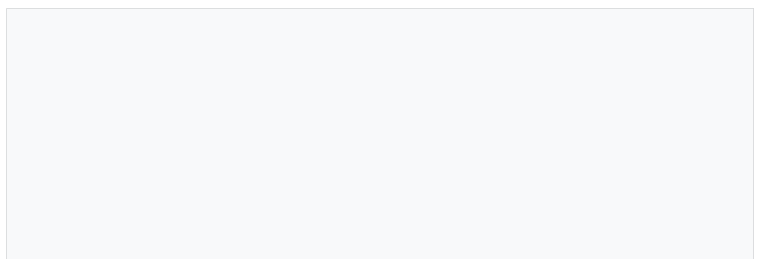
B Ice White Gloss
CS431-3060 • 600 x 300 x 10.5mm
19.7kg per m²



B Ice White Rectified Matt
CS778-6030 • 600 x 300 x 10.2mm
18.8kg per m²



A Classic White Gloss Glazed Ceramic
CS397-3040 • 400 x 300 x 9mm
16.1kg per m²



D Baltic White Rectified Gloss
CS780-9030 • 900 x 300 x 11.2mm
22.4kg per m²

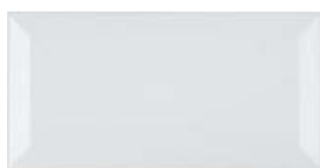


Biselado Blanco CS1075-2010

Biselado

classic bevelled brick tiles

gloss glazed ceramic



A **Biselado Blanco**
CS1075-2010 • 200 x 100 x 6mm
14kg per m²



D **Biselado Rojo**
CS1083-2010 • 200 x 100 x 6mm
14kg per m²



C **Biselado Verde**
CS1081-2010 • 200 x 100 x 6mm
14kg per m²



B **Biselado Ivory**
CS1079-2010 • 200 x 100 x 6mm
14kg per m²



C **Biselado Negro**
CS1082-2010 • 200 x 100 x 6mm
14kg per m²



B **Biselado Sage**
CS1080-2010 • 200 x 100 x 6mm
14kg per m²



Habitat White CS898-6033
Habitat White Wave CS899-6033 (see page 10)

Tile area calculator

Nominal size*	
Tiles	Per m ²
65 x 230	66.89
98.5 x 98.5	103.06
100 x 100	100.0
150 x 150	44.44
164 x 164	37.18
170 x 170	34.60
200 x 1200	4.17
225 x 225	19.75
225 x 450	9.88
250 x 250	16
250 x 500	8
287 x 295	11.81

Nominal size*	
Tiles	Per m ²
300 x 300	11.11
300 x 400	8.3333
300 x 450	7.41
300 x 600	5.556
300 x 900	3.7037
330 x 640	4.73
333 x 333	9.02
340 x 170	17.30
340 x 340	8.65
400 x 400	6.25
400 x 800	3.125
440 x 440	5.16

Nominal size*	
Tiles	Per m ²
450 x 450	4.94
450 x 900	2.47
500 x 500	4
502 x 333	5.98
502 x 502	3.97
600 x 150	11.11
600 x 200	8.33
600 x 600	2.78
800 x 800	1.56
900 x 150	7.41
900 x 900	1.23

*All of the above dimensions are subject to a tolerance of ± 2.5 mm. Quantities shown exclude grout gaps between each tile. Please allow an additional 5% for cutting/wastage.

Important information

NOMINAL DIMENSIONS

We quote nominal dimensions throughout this brochure which are subject to slight variation within internationally accepted standards.

SHADE VARIATION

Shade variation is an inherent feature of porcelain and ceramic tiles. We recommend that tiles are loosely laid out and 'blended' prior to fixing to achieve the most pleasing distribution of shades. Differences between batches can be more marked, for this reason we recommend that you buy all the tiles at one time. No liability for shading issues can be accepted after installation.

ADHESIVES, GROUTS AND SEALING

Always use high quality adhesives and grouts following manufacturers' recommendations for their use and suitability for the type of tile, the application and the substrate being tiled. As with any polished surface, polished porcelain is susceptible to staining if it is not protected with an appropriate sealer such as LTP MPG Sealer. We recommend that all of our polished porcelains are treated with an appropriate product. Always follow the manufacturer's instructions.

Dream Beige CS523-4040, CS523-6030, CS523-6060, page 54: Some batches of this polished porcelain may have been treated with a nano coating after manufacture, which means they do not need to be sealed. Please refer to our Fixing Guide at www.originalstyle.com/fixing.html for full details of how to test for the nano coating and subsequent sealing procedure.

INSTALLATION

Designworks Tiles cannot accept responsibility for any faults after tiles have been fixed and will not be held liable for any claims regarding the inappropriate use of sealing, adhesives or grouting materials. For technical queries, please contact us at info@designworkstiles.com

PHOTOGRAPHY

Owing to variations in studio lighting and printing inks, the tile colours shown in this catalogue may differ slightly from those of the actual tiles.

LIMITS OF LIABILITY

Designworks Tiles accepts no liability for the faulty installation of its products. In the case of any claim relating to the tiles themselves, Designworks Tiles' liability, to the extent permitted by law, is limited to either the replacement of the product or a refund of the cost of the product, and does not extend to cover any consequential loss.

Claims must be reported within seven working days from receipt of the tiles. Tiles must be inspected prior to installation and claims cannot be considered after the tiles have been installed. Please be advised that installation constitutes acceptance of the quality, size, colour, texture and shade of the tiles. Designworks Tiles warrants that its tiles conform to their description and are fit for their purpose.

Designworks Tiles makes no other express or implied warranty as to fitness or suitability of the products for particular installations. We extend no guarantees, express or implied, as to wear resistance or maintenance procedures.

It is imperative to follow sealer, grout and adhesive manufacturers' instructions regarding their suitability with our products. If in doubt please consult the sealant/grout/adhesive stockist from whom you purchased the products. Designworks Tiles makes no representations as to the fitness for purpose of third party sealants, adhesives and grouts.

Please note the use of certain acid based cleaning products may cause some of the tiles to react and change in character.

Wear ratings for glazed porcelains and ceramics, in line with ISO 10545-7 (PEI)

- 2 Floor coverings in areas that are walked on by soft soled or normal footwear with low traffic and occasional scratching
- 3 Floor coverings in areas that, with normal footwear, are walked on more often with small amounts of scratching and dirt. Suitable for residential kitchens, halls and corridors
- 4 Floor coverings that are walked on by regular traffic with some scratching dirt. Suitable for entrances, commercial kitchens etc
- 5 Floor coverings that are subject to severe pedestrian traffic over sustained periods with some scratching dirt. Suitable for shopping centres, airport concourses, hotel foyers etc

Wear rating: for unglazed porcelains and ceramics, in line with ISO 10545-6 (<175mm³)

Passes current tests for deep abrasion in line with ISO 10545-6

Pendulum Test BS7976-2 (4S96)

Certain tiles have been rated for their Pendulum Test Value (PTV), a test for shod foot slip potential in wet conditions. Low potential for slip rating is above 36.

Slip Potential	Value
High	24 and below
Moderate	25 to 35
Low	36+

Pendulum Barefoot Wet (BS7976-2 TRRL 55)

Certain tiles have been tested determine their bare foot slip potential in wet conditions. Low potential for slip rating is above 39.

PTVW and TRRL

Accepted limits for flooring are rated as follows:

Slip Potential	Value
High	19 and below
Moderate	20 to 39
Low	40 to 74
Very Low	75 and above

Classic Whites

We do not recommend the use of large format ceramic or porcelain tiles in a 50:50 brickbond pattern installation. The reason for this is that slight curvature in the tile may become noticeable and may not be deemed to be visually acceptable.

External use

All our porcelain tiles have passed the ISO 10545-12 frost resistance test, making them suitable for external use. We recommend that only tiles with PTVW slip resistance results of 36+ are used in external situations. Designworks Tiles cannot be held liable for cracking that can occur due to adverse weather conditions or poor installation.

DESIGNWORKS TILES

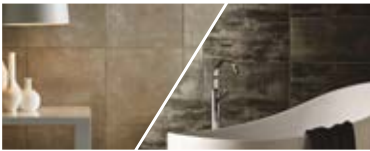
PORCELAIN / CERAMIC / MOSAIC / GLASS

Also from Designworks:



Designer Range

The finest in contemporary designer porcelain and ceramic tiles.



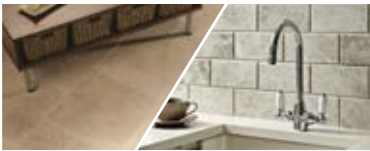
Tileworks

Our core-collection of contemporary large-format porcelain and ceramic tiles, featuring concrete, wood and natural stone effects for walls and floors.



Heritage / Restoration

Everything from Victorian geometric floor tiles, traditional decorative wall tiles and mouldings to hand decorated patterns. Bespoke designs available.



Natural Stone

Wall tiles, floor tiles and mosaics in a range of beautiful natural stone finishes, including large format pattern sets.



Mosaics

A vast and dazzling collection of mosaics including products specifically selected for the Pool and Spa / Leisure industry. Bespoke mosaic murals also available.

HQ: Falcon Road, Exeter, Devon EX2 7LB Tel: 01392 473037 / Fax: 01392 473035
SHOWROOM: 91 St. John Street, London EC1M 4NU Tel: 0203 751 2235
info@designworkstiles.com / www.designworkstiles.com

CODE/08/14 © designworkstiles 2014

