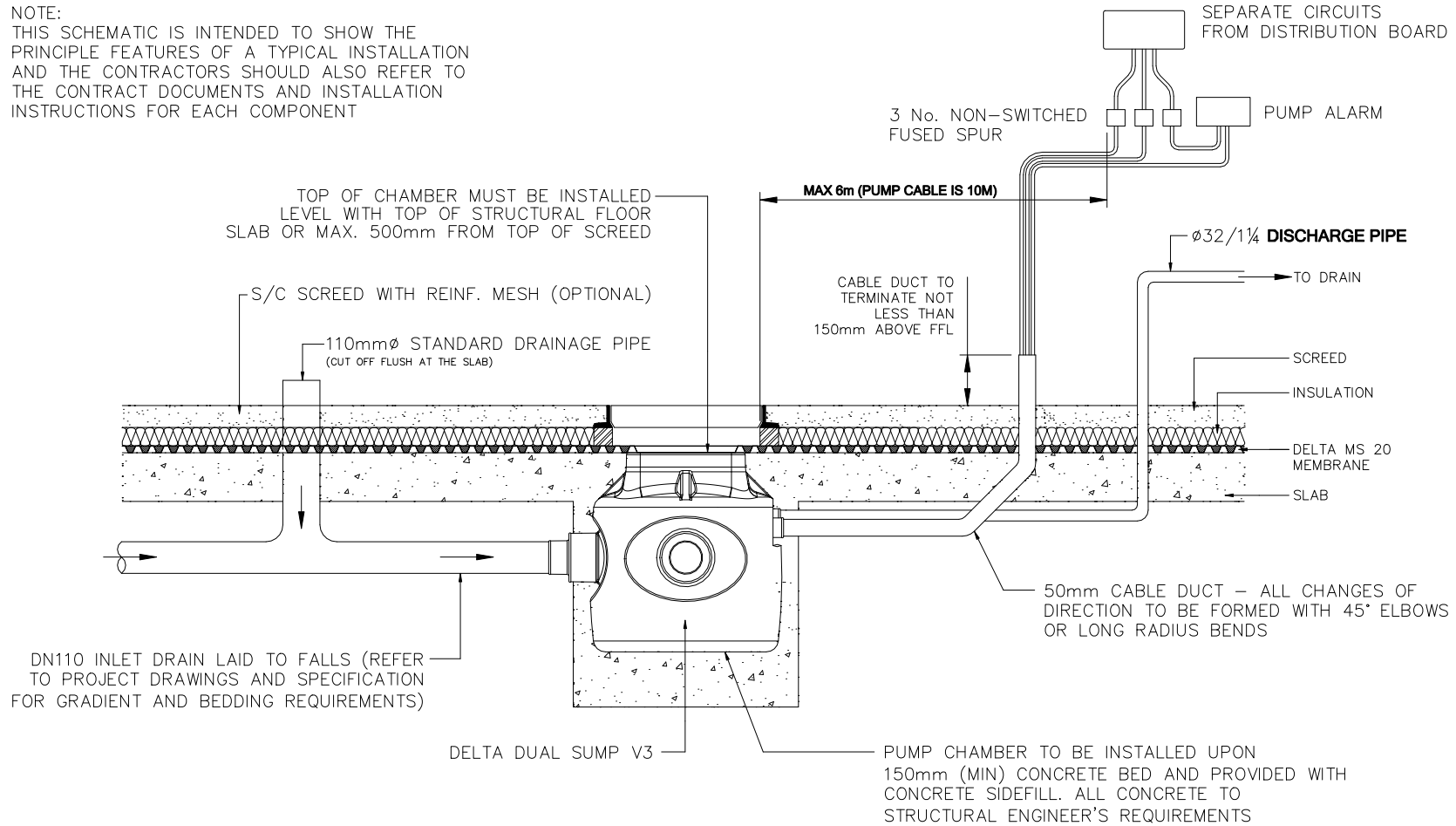


DO NOT SCALE

NOTE:
THIS SCHEMATIC IS INTENDED TO SHOW THE PRINCIPLE FEATURES OF A TYPICAL INSTALLATION AND THE CONTRACTORS SHOULD ALSO REFER TO THE CONTRACT DOCUMENTS AND INSTALLATION INSTRUCTIONS FOR EACH COMPONENT



INSTALLATION SCHEMATIC - DELTA DUAL V3

129-V3-SCHEMATIC

DELTA MEMBRANE SYSTEMS LTD

DELTA House
Merlin Way
North Weald
Epping
Essex CM16 6HR
Tel: 01992 523523 Fax: 01992 523250

Title
INSTALLATION SCHEMATIC -
DELTA DUAL V3

Drawing No. 129-V3-SCHEMATIC

Rev

Drawn