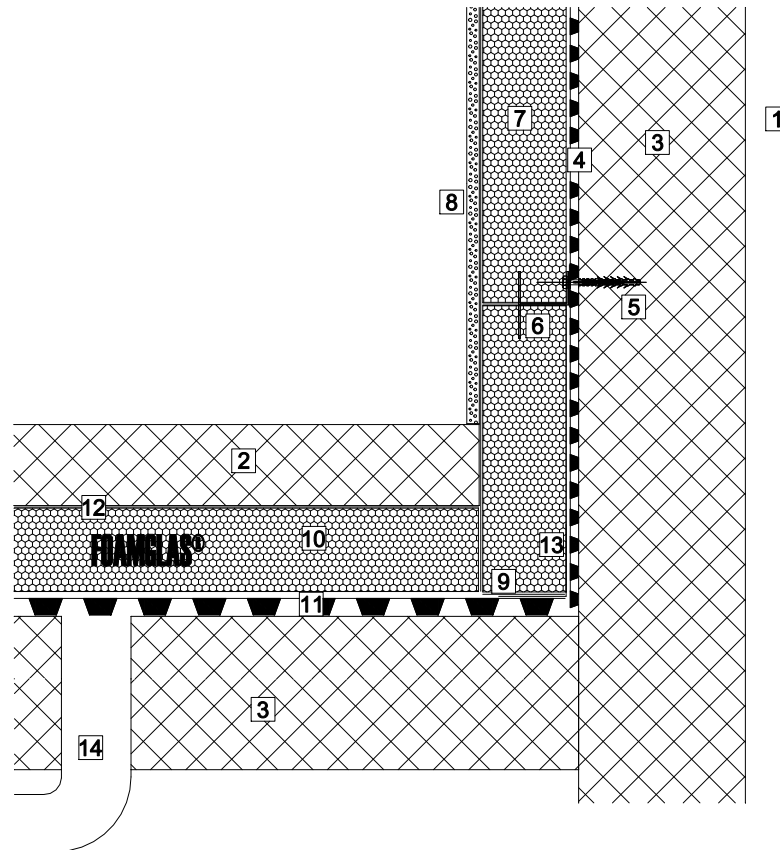


**DELTA MEMBRANE SYSTEMS  
FOAMGLAS OVER DELTA MS AND DETAIL 129**

145



1. Wall
2. Screed
3. Reinforced concrete
4. Delta-MS500 drainage membrane
5. Delta-Plug+Delta-Rope OR Delta Qwik-Seal plug
6. Foamglas® F anchor screwed into Delta plugs
7. FOAMGLAS® T4+ (minimum 70mm) with joints sealed with PC®56 bituminous adhesive
8. Moisture resistant tapered edges plaster board / Eternit Hydropanel/ Fermacell - Apply three strips of PC®56 adhesive using 10 mm notched trowel
9. Bed insulation in PC®56 adhesive
10. FOAMGLAS® FLOOR BOARD
11. Delta-MS20 drainage membrane
12. 1000 gauge Polyethelene separation membrane
13. Delta corner strip
14. Delta detail 129-V3

# DELTA MEMBRANE SYSTEMS LTD

DELTA House  
Merlin Way  
North Weald  
Epping  
Essex CM16 6HR  
Tel: 01992 523523 Fax: 01992 523250

Title

FOAMGLAS OVER DELTA-MS AND  
DETAIL 129

Drawing No.

145

Rev

Drawn