



Focus on Decra Burj Gloss

A stylish, practical and durable alternative to lacquered cubicles



Burj Gloss case study 1



Burj Gloss case study 2



Burj Gloss case study 3



Burj Gloss case study 4



Burj Gloss case study 5



Burj Gloss case study 6



Burj Gloss case study 7



Burj Gloss ironmongery, edge options and drawings

Fact file

16 Palace Street Victoria - Decra Burj Gloss cubicle system

Architects Scott Brownrigg specified the Decra true full height Burj Gloss flush fascia cubicle system for the 3rd floor washrooms at 16 Palace Street in Victoria.

38mm lightweight core doors and pilasters are faced with gloss finish HPL and they feature rebated ash hardwood edges, painted to match the laminate.

Burj employs extruded aluminium floor & ceiling interfaces filled with matching gloss inserts to form a true full height secluded cubicle and its elegant appearance is heightened by using top quality stainless steel DDA compliant locks and cubicle furniture.

Burj Gloss offers a more durable specification than most lacquered cubicles and, for workplace areas in particular, Burj represents the ideal combination of cost effectiveness and faithful design realisation.

Burj is also available in 'Realwood' veneer laminates, conventional woodgrain and plain colour HPL, and our ST version means that this versatile product can also be married to pre-erected block or stud walls.

Contact our sales department for more information.

Focus on Burj Gloss case study 1

Specification:

Doors/pilasters:

38mm o/a lightweight core board faced with high gloss finish high pressure laminate. Rebated Ash hardwood edges painted to match fascia.

Partitions:

19mm o/a particleboard faced with high gloss laminate as above.

Duct panels:

Blue toughened glass

Ironmongery:

DDA compliant s/steel. Extruded aluminium floor/ceiling interfaces.



Decra Burj Gloss, 16 Palace Street, London SW1 painted edge to match fascia toughened glass duct panels



Fact file

Wholefoods supermarket - Piccadilly Decra Burj ST Gloss

Architects, Garnet & Partners, specified the Decra Burj ST true full height, flush-fascia cubicle system for a new branch of American health food supplier **"Wholefoods"**.

The lightweight doors and pilasters are clad with eye-catching gloss finish high pressure laminate, with polished ash hardwood edges and DDA compliant stainless steel hardware. The fascia interfaces with tiled stud partitions erected by project managers the RG Group.

Wholefoods have come a long way since their first store which opened in Austin Texas in 1980 and now have 7 stores in the UK. The Piccadilly store features a host of healthy eating options and has both indoor and outdoor seating areas.

Decra Burj ST in gloss finish laminates provides a contemporary looking alternative to real wood veneered 44mm joinery as well as a more durable product than, for instance, polyurethane lacquered cubicles.

Decra Burj is also available with traditional laminate faced partitions and rear duct panels - contact our sales department for more details.

Decra Burj ST Gloss cubicle system in orange gloss HPL laminate with DDA compliant stainless steel hardware

Focus on Burj Gloss case study 2

Specification:

Doors/pilasters:
38mm lightweight particleboard faced with gloss finish high pressure laminate with rebated hardwood edges in polished Ash.

Partitions:
Tiled jumbo stud (erected by project manager).

Ironmongery:
DDA compliant stainless steel lock (emergency access type) s/steel sprung hinges, buffered s/steel coat hooks.



Fact file

80 Hammersmith Road Decra Burj ST Gloss cubicles, Levada troughs

Architects Barr Gazetas specified the true full height Decra Burj ST cubicle system for a washroom overhaul of offices at 80 Hammersmith Road in London.

The lightweight core flush fascia panels are clad with gloss finish high pressure laminate for a slick contemporary look and rebated ash hardwood edges to the doors and pilasters have been stained in a walnut colour to match the walnut veneer entrance doors into the washrooms.

Division panels are conventional stud partitions with tiled skirting and the rear duct panels are gloss laminate faced particleboard.

Burj ST incorporates quality DDA compliant s/steel lock assembly (emergency external access type), sprung stainless steel hinges and buffered s/steel coat hooks.

Vanity units take the form of Decra's Levada trough made from solid surfacing materials (Corian in this instance) with gloss laminate faced under-panels.

Decra are both PEFC and FSC accredited and can provide a fully PEFC compliant specification for the Burj ST cubicle system.

Burj st Gloss, 80 Hammersmith Road, white Gloss laminate faced doors and pilasters, DDA s/steel hardware

Focus on Burj Gloss case study 3

Specification:

Doors/pilasters:
38mm overall - white gloss finish high pressure laminate faced lightweight core boards. Rebated Ash hardwood edge finished in walnut stain.

Partitions:
Jumbo stud partitions and tiled skirting (by others).

Vanity units:
Levada trough manufactured in Corian with gloss laminate faced under-panels.

Height:
Approx: 2400mm.



Fact file

82 Dean Street Decra Burj Gloss cubicles, Levada troughs

Project architect Barr Gazetas specified the Decra Burj true full height cubicle system for this 5 floor office refurbishment in the heart of London's Soho district.

38mm lightweight core doors and pilasters have been faced with gloss texture high pressure laminate in plain grey with the inclusion of polished and lacquered ash hardwood edges to form the flush frontage.

19mm white high pressure laminate faced particleboard has been used for the partitions with the glossy grey look carried through to the rear duct panels.

Extruded aluminium interfaces have been used at the floor and ceiling to give a "floating appearance" from the front elevation and the quality DDA compliant stainless steel locks and hardware maintain a quality appearance throughout.

Elegant white Corian vanities (Decra's Levada trough) with wall mounted mixer taps contrast well with the glossy grey cubicles.

Decra are both PEFC and FSC accredited and can provide a fully compliant PEFC specification for the Burj cubicle system.

Focus on Burj Gloss case study 4

Specification:

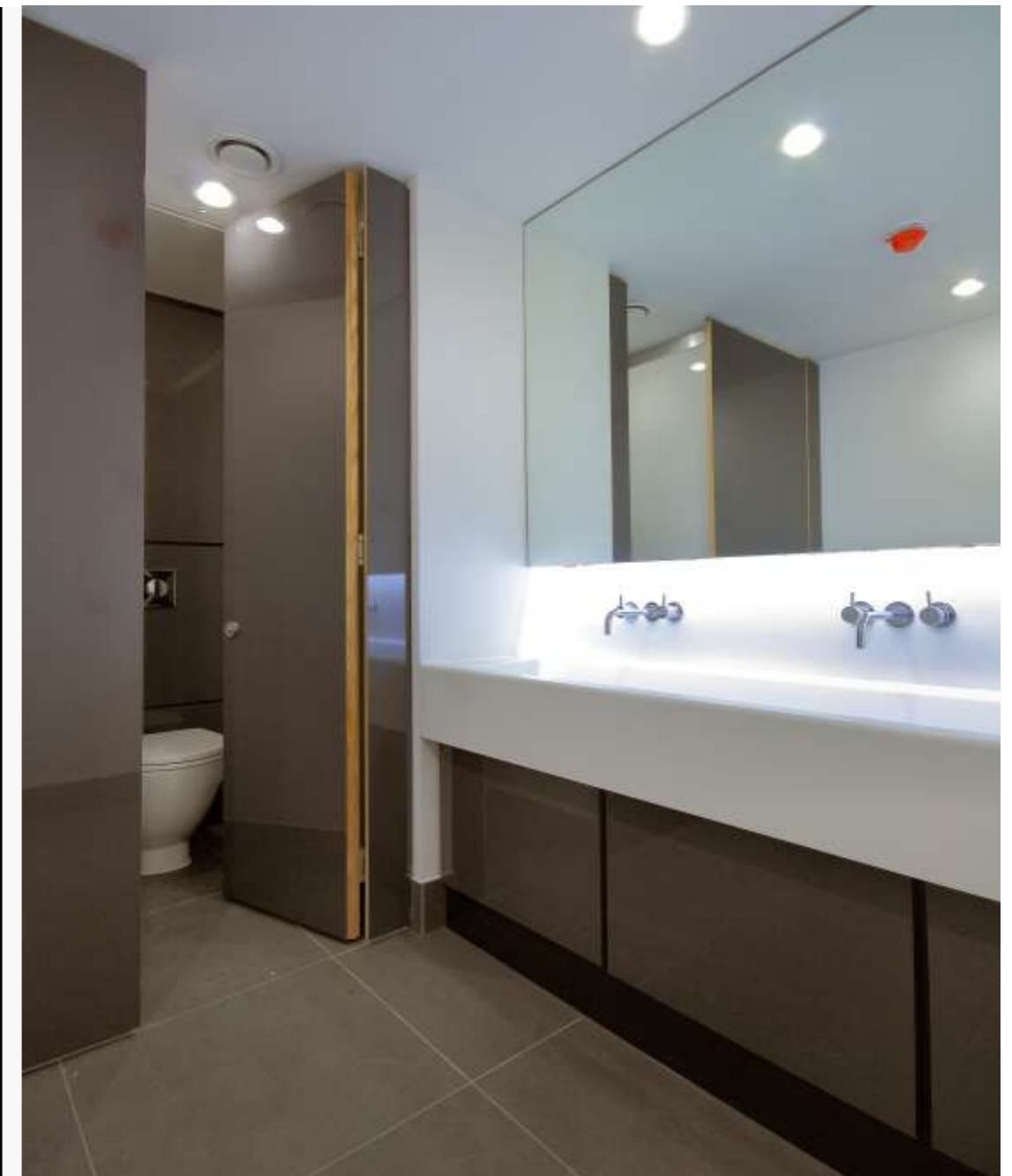
Doors/pilasters:
38mm o/a lightweight core board faced with high gloss finish high pressure laminate. Polished rebated Ash hardwood edges .

Partitions:
19mm o/a particleboard faced with matt finish high pressure laminate.

Rear Duct panels:
19mm O/a particleboard faced with grey gloss high pressure laminate.

Ironmongery:
DDA compliant s/steel.

Vanity units:
Levada troughs in Corian



82 Dean Street, Soho, Decra Burj Gloss with grey pilasters and doors and white partitions, s/s ironmongery



Fact file

Park Royal Offices - Burj Gloss cubicles Levada troughs

Architects John Robertson Assoc (JRA) specified the Decra true full height cubicle system Burj for a prestigious new 6 story office complex at Park Royal in North West London.

Burj incorporates a 38mm lightweight fascia clad, in this instance, with high gloss finish plain white high-pressure laminate, and 19mm laminate faced particleboard partitions and rear duct panels - also in white gloss.

Doors and pilasters have rebated ash hardwood edges and the partitions are supported at the floor and ceiling with extruded aluminium sections with matching laminate infills.

As standard Burj offers high quality DDA compliant s/steel locks with external emergency access and matching stainless steel cubicle furniture.

Trough style Levada vanity units are manufactured from Corian with sensor controlled s/steel taps. Decra also supplied the toughened glass urinal modesty screens and gloss laminate faced duct panels.

Contact Decra for more details.

Focus on Burj Gloss case study 5

Specification:

doors/pilasters:
38mm lightweight core faced with gloss finish HPL. Rebated polished Ash hardwood edges.

Partitions/duct panels:
19mm gloss laminate faced particleboard partitions, rear ducts and urinal ducts. Geberit cistern flush units.

Ironmongery:
DDA compliant s/steel.

Vanity units:
Levada troughs in Corian glacier white.

Urinal modesty screens:
13mm toughened laminated glass.



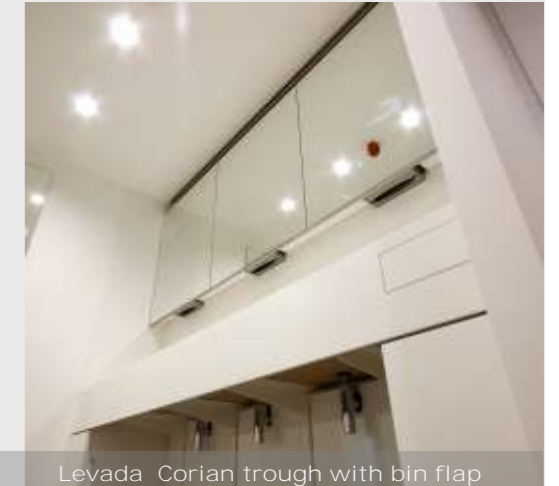
First Central offices - Park Royal , Decra Burj Gloss cubicles in white gloss and Levada Corian troughs



Burj full height cubicles



Toughened glass modesty panels



Levada Corian trough with bin flap

Fact file

5th Floor Greencoat House, London, SW1 - Burj Gloss cubicles

Specialist fit out contractor Modus specified the Decra Burj true full height cubicle system for a tenant's requirement at an office building in Victoria.

Modus wanted a more cost effective solution than glass and we were able to provide this high gloss finish laminate as cladding to the doors, pilasters and rear duct panels.

With the partitions contrasting in matt white, this has a stunning impact on the eye and, as you can see from the quality of reflections in the laminate, there's a strong visual similarity to that of glass installations.

Modus wanted a matching edge and Decra were able to apply a 4 part paint finish to the ash hardwood edge to match the fascia.

Quality DDA compliant s/steel hardware is used as standard with Burj as well as s/steel pull handles for ambulant disabled cubicles.

Decra are both PEFC and FSC accredited and can provide a fully PEFC compliant specification for the Burj cubicle system.

Decra Burj Gloss true full height cubicle system with black gloss laminate faced doors and pilasters

Focus on Burj Gloss case study 6

Specification:

Doors/pilasters

38mm overall - black gloss finish high pressure laminate faced lightweight core boards. Rebated ash hardwood edge - with 4 part paint finish.

Partitions:

19mm overall - matt finish white laminate faced particleboard.

Duct panels:

19mm overall - black gloss laminate faced particleboard.

Ironmongery:

DDA compliant s/steel.

Approx height:

2400mm.



Fact file

Alea Casino Glasgow - Decra Burj Gloss cubicles

Specified by London architects Real Studios, Burj Gloss true full height cubicles have been installed in the public washrooms at Glasgow's Alea Casino.

38mm lightweight core doors and pilasters are faced with high gloss laminate from the Abet Laminati HR-LAQ range.

Polished Ash hardwood edges are rebated to provide the linear frontage. Ironmongery includes DDA compliant s/steel lock assembly, sprung s/steel hinges and buffered s/steel coat hooks.

Partitions are 19mm o/a laminate faced particleboard with a feature panel in a contract colour to house the toilet roll holders.

Featured in numerous architectural magazines Alea Casino forms part of the Clyde Regeneration scheme.

Decra are both PEFC and FSC certified and can provide a fully PEFC compliant specification for Burj Gloss for any BREEAM considerations.

Decra Burj Gloss - Alea Casino, Glasgow - part of the Clyde Regeneration scheme.

Focus on Burj Gloss case study 7

Specification:

Doors and pilasters:

38mm overall - black gloss finish high pressure laminate faced lightweight core boards. Polished Ash rebated Ash hardwood edge.

Partitions:

19mm overall - matt finish red high pressure laminate faced particleboard with contrast laminate feature panel.

Rear Duct Panels:

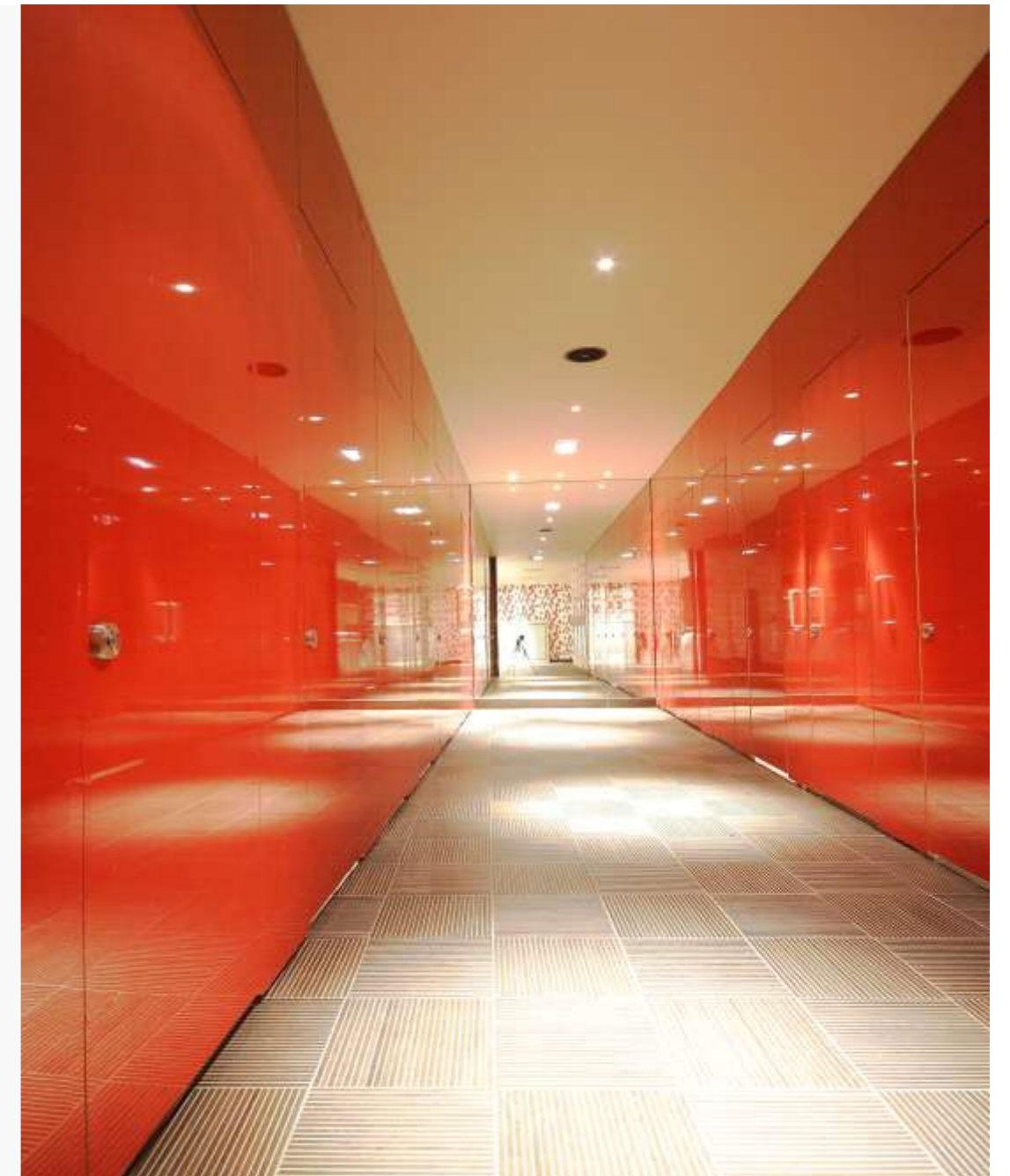
19mm overall - matt finish red high pressure laminate faced particleboard

Ironmongery:

DDA compliant s/steel.

Overall height:

Approx 2600mm.



Fact file

Burj Gloss hardwood edge options.

For economy, the Burj Gloss fascia includes as standard, Ash hardwood edges which are rebated and polished.

However, we recognise that clients might prefer matching edges (especially for instance with light colour gloss laminates) and in these instances we can provide a 4 part paint finish to compliment the face laminate.

We can also apply darker wood stains to mimic the timber or veneer finishes of **the entrance doors and frames to the washrooms. Here we're matching with walnut.**

Other hardwoods can also be used - some of which act as a better material for certain paint finishes - such as Cherry and Maple, in both of which painting effectively fills the grain.

Contact the Decra sales department to discuss the various options. Let us know **your design ideas or client requirements** and we'll help you to the most practical realisation.

Focus on Burj Gloss edge options



Burj Gloss white with painted edge, Burj Gloss with polished Ash edge



Ash stained walnut, polished and painted



Hammersmith Road - Ash stained walnut



Offices Victoria black painted edge

Fact file

Burj Gloss ironmongery

Burj Gloss includes as standard, quality German design DDA compliant s/steel lock assembly, sprung s/steel hinges and buffered s/steel coat hooks.

Extruded aluminium forms the floor and ceiling interfaces with laminate infills to hide all fixing screws. This can be either to match the partition or door laminate or as a metallic 'aluminium' laminate to match the extruded sections or the stainless steel furniture.

Over the years there has been a big debate concerning the section from building regulations that relates to light reflectance values (LRVs) and the need to have a contrast between the pilasters and the doors.

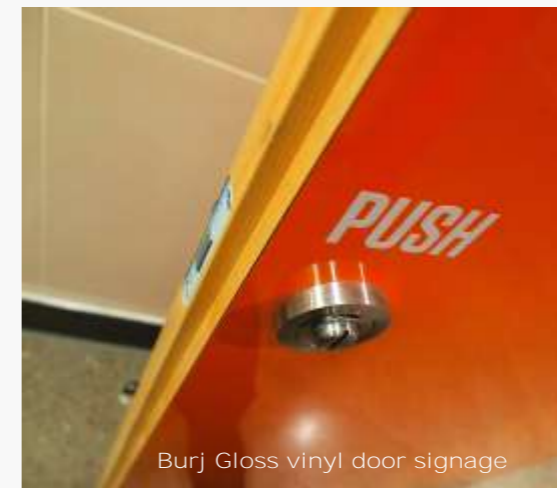
Currently, the suggestion is for a 30 point difference - pairing for instance white with a darkish grey. However, we understand that, from a design perspective this is not always desirable so other options like using signage or signed push-plates should be considered - see examples bottom right. From among our hinge options, Decra can also provide hinges sprung to fall either open or closed when not in use.

Please contact Decra to discuss the options.

Focus on Burj Gloss ironmongery



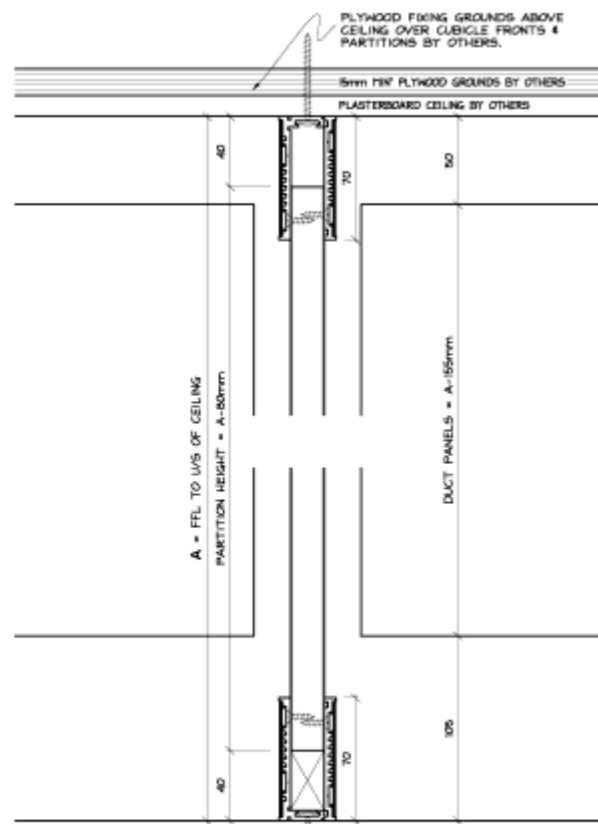
Decra Burj Gloss DDA compliant s/steel lock assembly, buffered s/teel coat hook, extruded aluminium interface



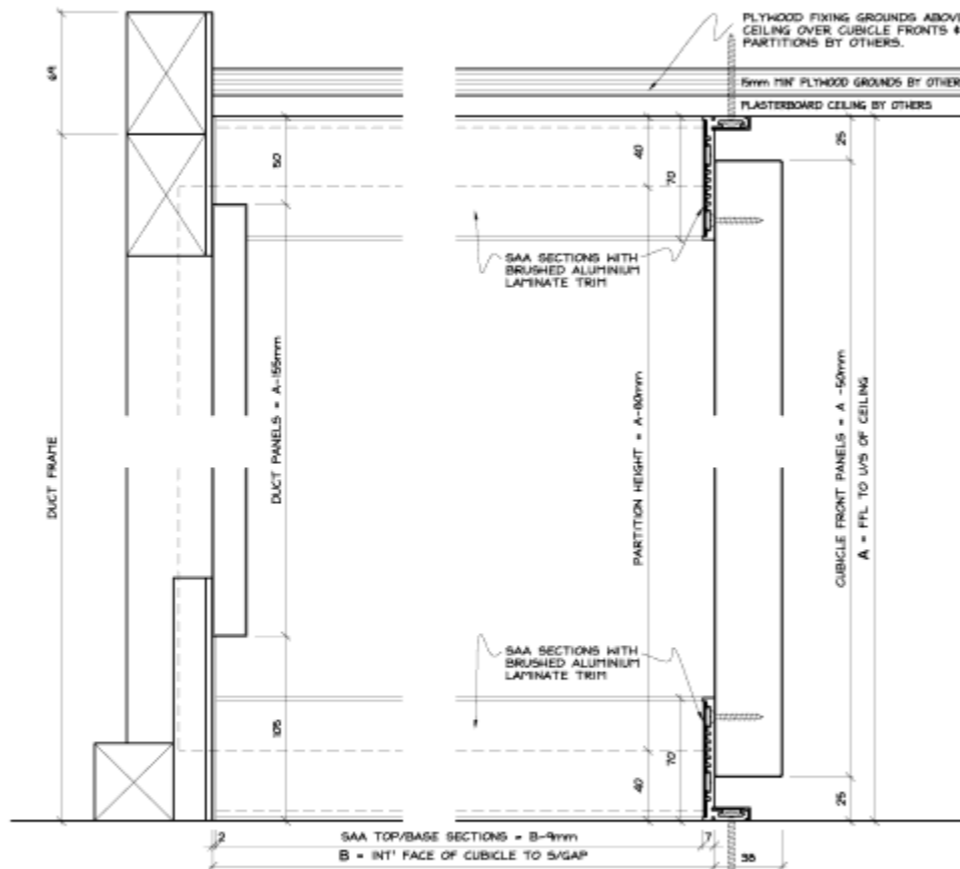
Burj Gloss vinyl door signage



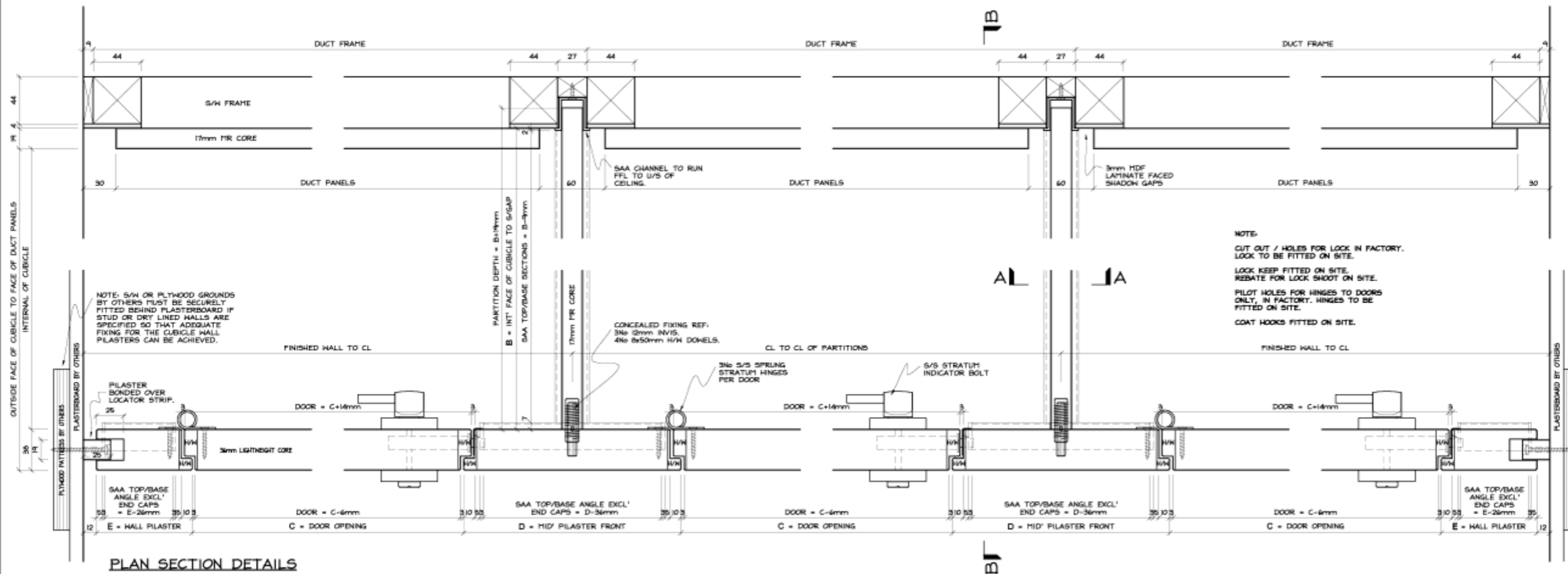
Burj Gloss push signage



SECTION 'A'A'



SECTION 'B'B'



PLAN SECTION DETAILS

NOTE:
 CUT OUT / HOLES FOR LOCK IN FACTORY.
 LOCK TO BE FITTED ON SITE.
 LOCK KEEP FITTED ON SITE.
 REBATE FOR LOCK SHOOT ON SITE.
 PILOT HOLES FOR HINGES TO DOORS
 ONLY, IN FACTORY. HINGES TO BE
 FITTED ON SITE.
 COAT HOOKS FITTED ON SITE.

| Rev. | Description | Date | By |
|------|-----------------|----------|----|
| B | DRAWING UPDATED | 24.08.15 | |
| C | DRAWING UPDATED | 14.09.15 | |
| D | DRAWING UPDATED | 23.01.16 | |
| E | DRAWING UPDATED | 04.02.16 | |



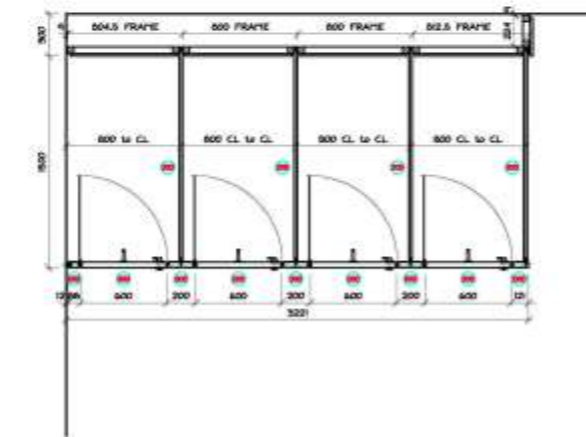
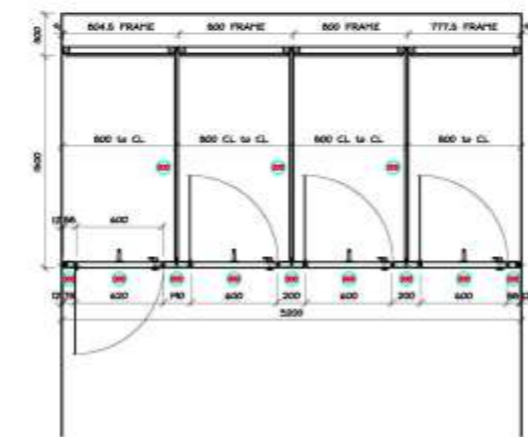
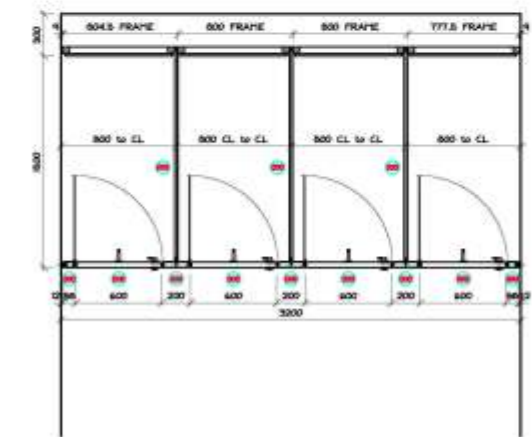
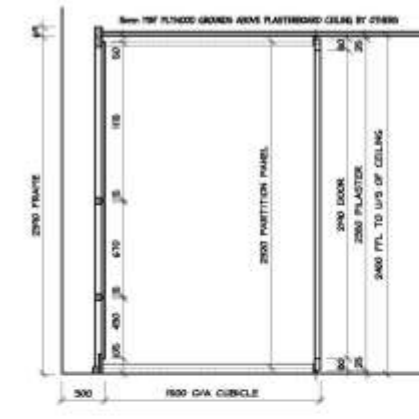
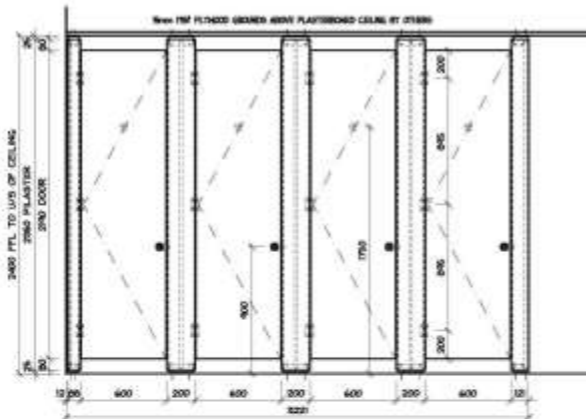
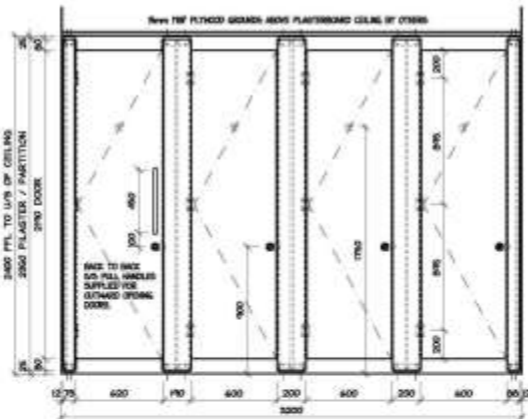
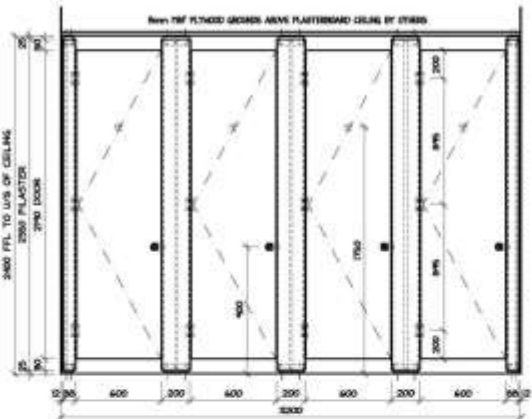
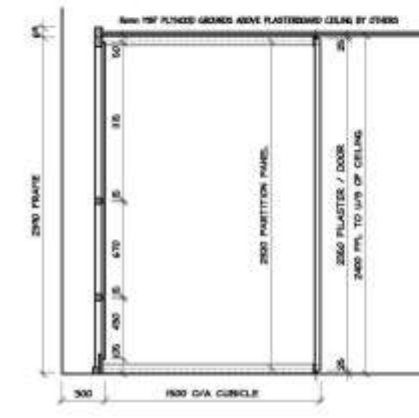
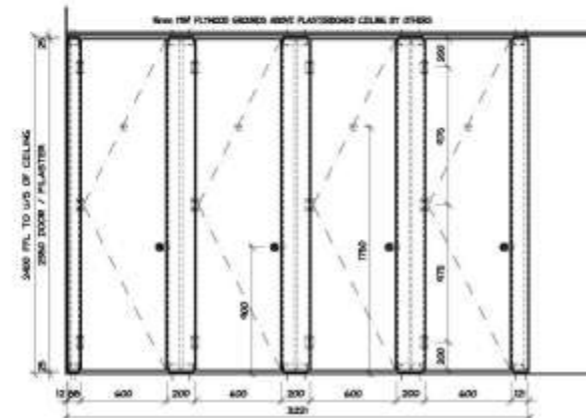
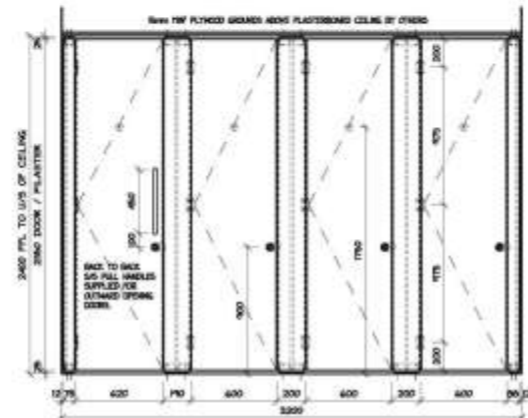
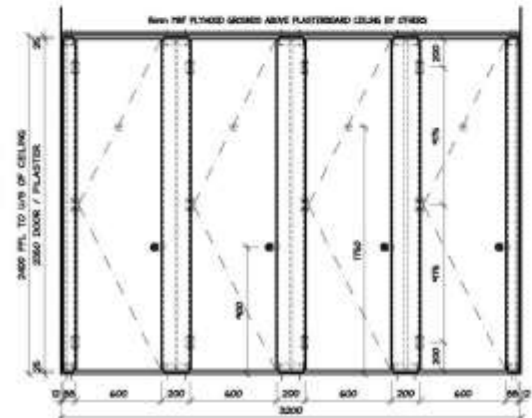
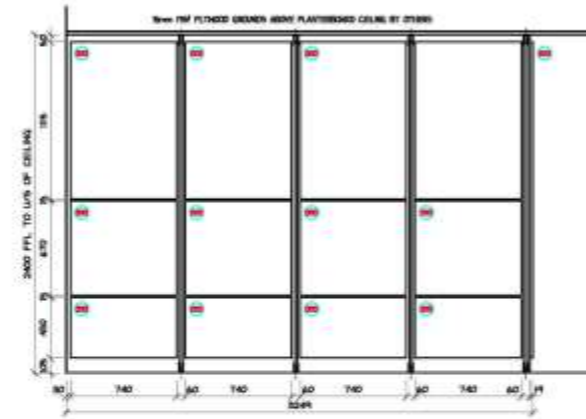
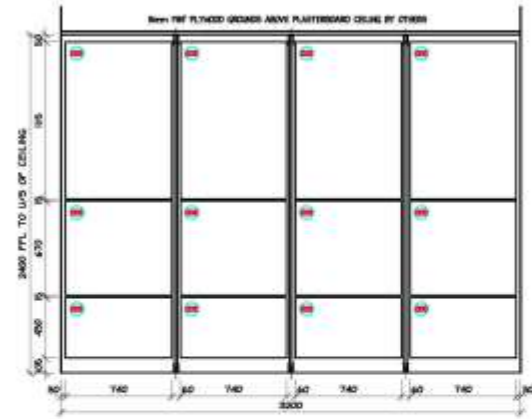
34 Forest Business Park
 Atglen Avenue
 London
 E9 7PB
 T: 020 8520 4371
 F: 020 8521 0606
 E: draw@dekra.co.uk
 W: www.dekra.co.uk

Client: DEKRA LTD
 Project: BURJ CUBICLE DETAILS
 30mm FRONT PANELS
 BETWEEN WALLS
 INWARD OPENING DOORS

Orig No: DI-201 Revision: E
 Scale: 1:2 Drawn by: RS Date: 01.06.07

© This drawing and the design contained are protected by copyright and design rights and may not be further wholly or partially reproduced, photographed, copied or used for any purpose other than that for which the drawing is issued, without prior permission from Dekra Limited.

BURJ 38mm with 19mm partitions



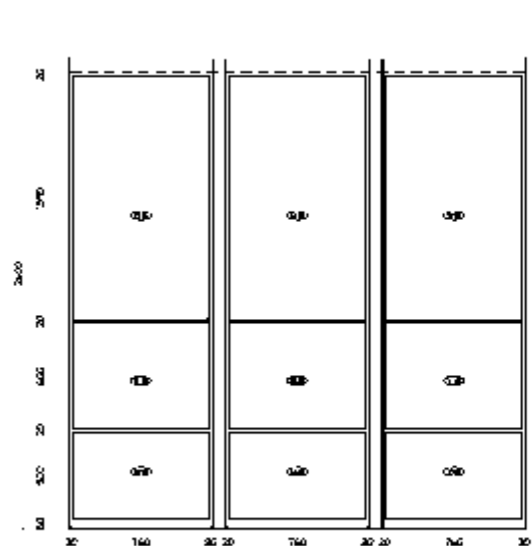
| Rev | Description | Date | By |
|-----|-----------------|----------|----|
| B | SHADING UPDATED | 04.03.19 | RS |
| C | SHADING UPDATED | 14.03.19 | RS |
| D | SHADING UPDATED | 20.03.19 | RS |



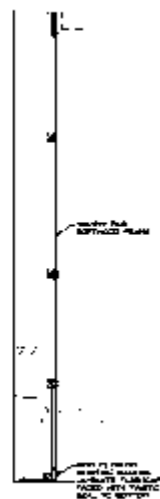
30 Forest Business Park
Jugals Avenue
London
E10 7TQ
t : 020 8520 4374
f : 020 8521 0620
e : draw@decaltd.co.uk
w : www.decaltd.co.uk

Client: DECA LTD
Project: BURJ CUBICLE LAYOUTS 38mm FRONT PANELS

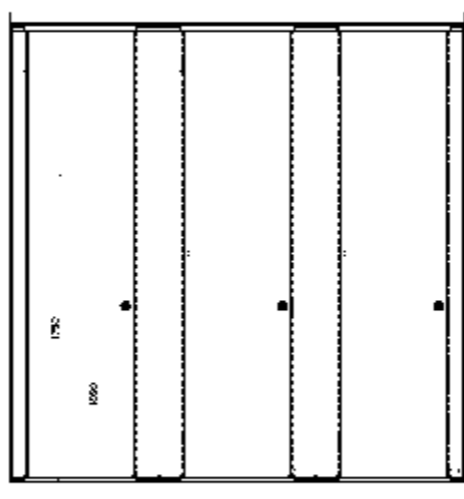
Dep No: DI-301 Revisions: D
Scale: 1:25 Drawn by: RS Date: 01.06.07
© This drawing and the design depicted are protected by copyright. Neither design, right, nor copyright shall be assigned or used for any purpose other than that for which the drawings are issued, without prior permission from Decca Limited.



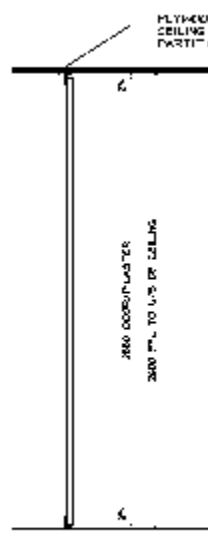
ELEVATION A



SECTION THROUGH WC DUCT



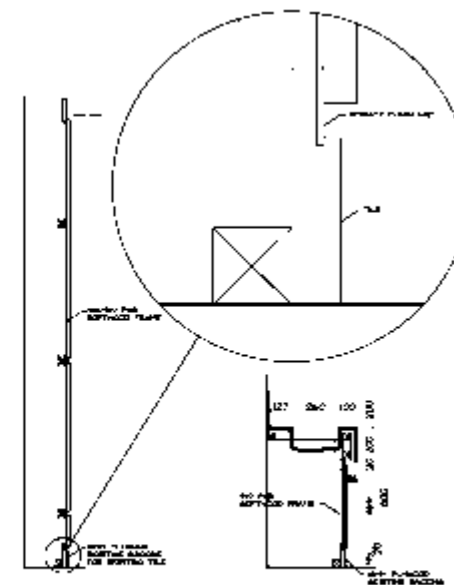
ELEVATION B



SECTION THROUGH CUBICLE

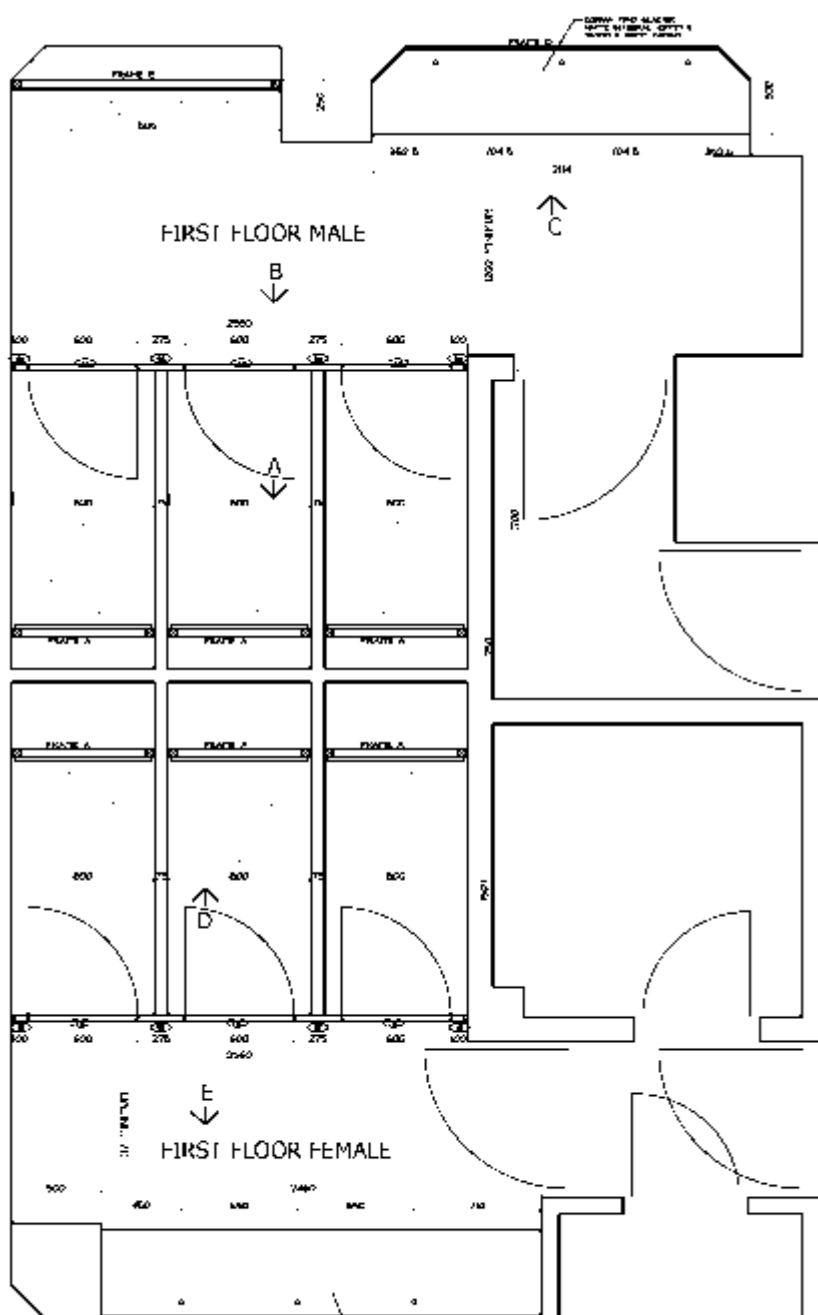


ELEVATION C



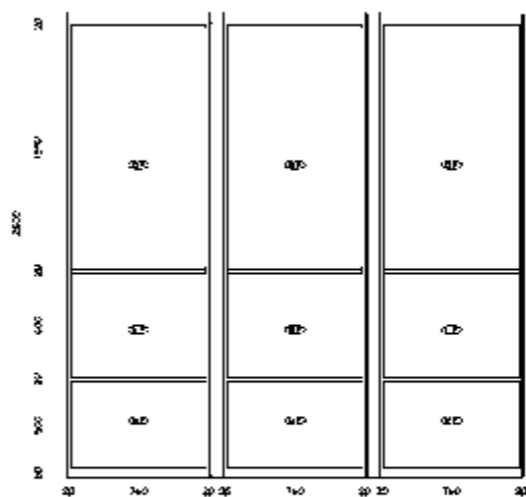
SECTION THROUGH URINAL DUCT

SECTION THROUGH VANITY UNIT

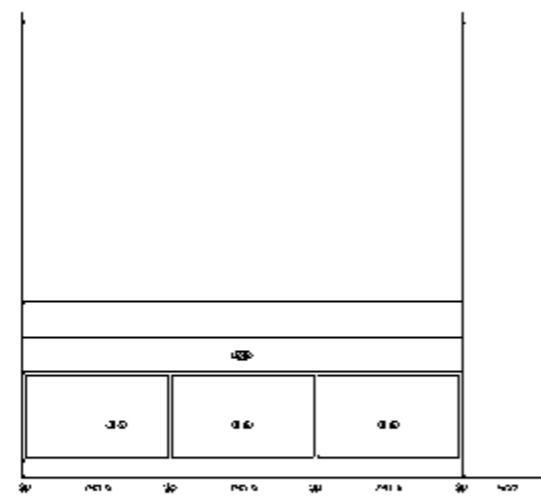


FIRST FLOOR MALE

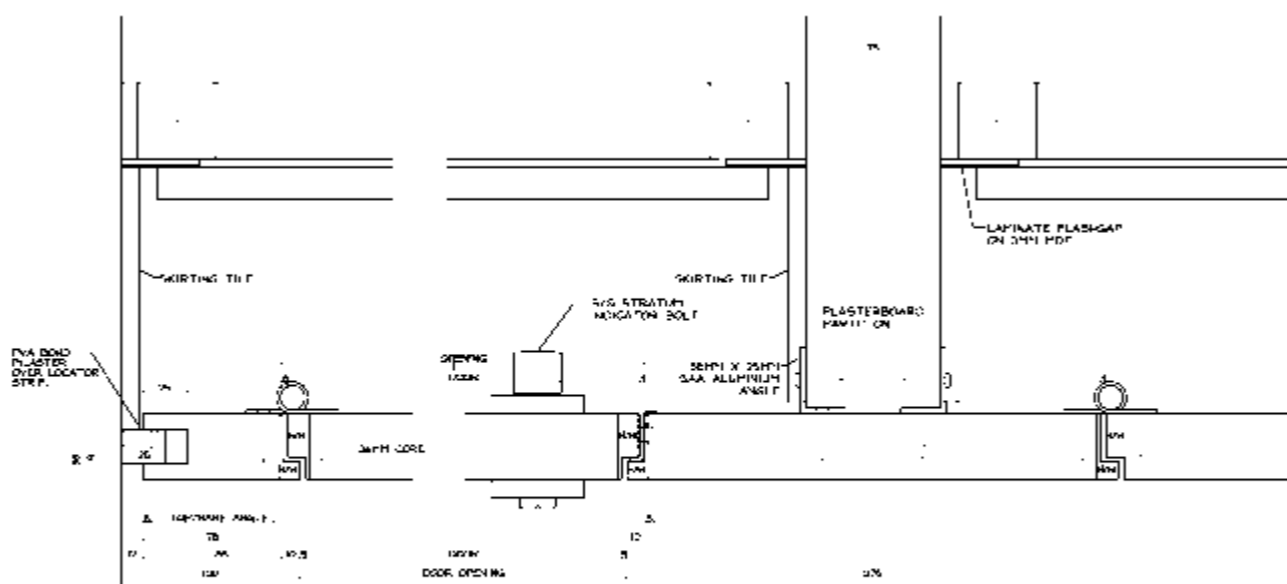
FIRST FLOOR FEMALE



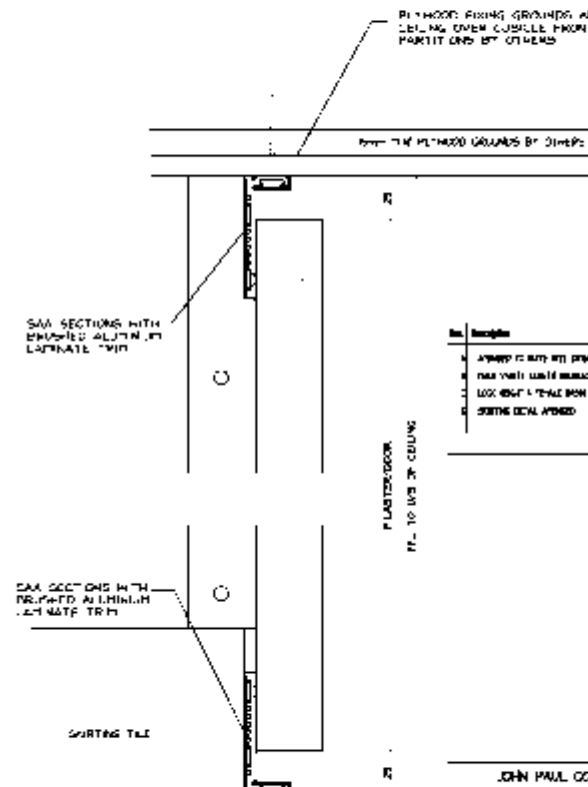
ELEVATION D



ELEVATION E



PLAN DETAIL 1:2



HEIGHT DETAIL 1:2 OF CUBICLE FRONT

| NO. | DESCRIPTION | QTY | UNIT | PRICE | TOTAL |
|-----|-------------|-----|------|-------|-------|
| 1 | ... | ... | ... | ... | ... |
| 2 | ... | ... | ... | ... | ... |
| 3 | ... | ... | ... | ... | ... |
| 4 | ... | ... | ... | ... | ... |
| 5 | ... | ... | ... | ... | ... |
| 6 | ... | ... | ... | ... | ... |
| 7 | ... | ... | ... | ... | ... |
| 8 | ... | ... | ... | ... | ... |
| 9 | ... | ... | ... | ... | ... |
| 10 | ... | ... | ... | ... | ... |
| 11 | ... | ... | ... | ... | ... |
| 12 | ... | ... | ... | ... | ... |
| 13 | ... | ... | ... | ... | ... |
| 14 | ... | ... | ... | ... | ... |
| 15 | ... | ... | ... | ... | ... |
| 16 | ... | ... | ... | ... | ... |
| 17 | ... | ... | ... | ... | ... |
| 18 | ... | ... | ... | ... | ... |
| 19 | ... | ... | ... | ... | ... |
| 20 | ... | ... | ... | ... | ... |
| 21 | ... | ... | ... | ... | ... |
| 22 | ... | ... | ... | ... | ... |
| 23 | ... | ... | ... | ... | ... |
| 24 | ... | ... | ... | ... | ... |
| 25 | ... | ... | ... | ... | ... |
| 26 | ... | ... | ... | ... | ... |
| 27 | ... | ... | ... | ... | ... |
| 28 | ... | ... | ... | ... | ... |
| 29 | ... | ... | ... | ... | ... |
| 30 | ... | ... | ... | ... | ... |
| 31 | ... | ... | ... | ... | ... |
| 32 | ... | ... | ... | ... | ... |
| 33 | ... | ... | ... | ... | ... |
| 34 | ... | ... | ... | ... | ... |
| 35 | ... | ... | ... | ... | ... |
| 36 | ... | ... | ... | ... | ... |
| 37 | ... | ... | ... | ... | ... |
| 38 | ... | ... | ... | ... | ... |
| 39 | ... | ... | ... | ... | ... |
| 40 | ... | ... | ... | ... | ... |
| 41 | ... | ... | ... | ... | ... |
| 42 | ... | ... | ... | ... | ... |
| 43 | ... | ... | ... | ... | ... |
| 44 | ... | ... | ... | ... | ... |
| 45 | ... | ... | ... | ... | ... |
| 46 | ... | ... | ... | ... | ... |
| 47 | ... | ... | ... | ... | ... |
| 48 | ... | ... | ... | ... | ... |
| 49 | ... | ... | ... | ... | ... |
| 50 | ... | ... | ... | ... | ... |
| 51 | ... | ... | ... | ... | ... |
| 52 | ... | ... | ... | ... | ... |
| 53 | ... | ... | ... | ... | ... |
| 54 | ... | ... | ... | ... | ... |
| 55 | ... | ... | ... | ... | ... |
| 56 | ... | ... | ... | ... | ... |
| 57 | ... | ... | ... | ... | ... |
| 58 | ... | ... | ... | ... | ... |
| 59 | ... | ... | ... | ... | ... |
| 60 | ... | ... | ... | ... | ... |
| 61 | ... | ... | ... | ... | ... |
| 62 | ... | ... | ... | ... | ... |
| 63 | ... | ... | ... | ... | ... |
| 64 | ... | ... | ... | ... | ... |
| 65 | ... | ... | ... | ... | ... |
| 66 | ... | ... | ... | ... | ... |
| 67 | ... | ... | ... | ... | ... |
| 68 | ... | ... | ... | ... | ... |
| 69 | ... | ... | ... | ... | ... |
| 70 | ... | ... | ... | ... | ... |
| 71 | ... | ... | ... | ... | ... |
| 72 | ... | ... | ... | ... | ... |
| 73 | ... | ... | ... | ... | ... |
| 74 | ... | ... | ... | ... | ... |
| 75 | ... | ... | ... | ... | ... |
| 76 | ... | ... | ... | ... | ... |
| 77 | ... | ... | ... | ... | ... |
| 78 | ... | ... | ... | ... | ... |
| 79 | ... | ... | ... | ... | ... |
| 80 | ... | ... | ... | ... | ... |
| 81 | ... | ... | ... | ... | ... |
| 82 | ... | ... | ... | ... | ... |
| 83 | ... | ... | ... | ... | ... |
| 84 | ... | ... | ... | ... | ... |
| 85 | ... | ... | ... | ... | ... |
| 86 | ... | ... | ... | ... | ... |
| 87 | ... | ... | ... | ... | ... |
| 88 | ... | ... | ... | ... | ... |
| 89 | ... | ... | ... | ... | ... |
| 90 | ... | ... | ... | ... | ... |
| 91 | ... | ... | ... | ... | ... |
| 92 | ... | ... | ... | ... | ... |
| 93 | ... | ... | ... | ... | ... |
| 94 | ... | ... | ... | ... | ... |
| 95 | ... | ... | ... | ... | ... |
| 96 | ... | ... | ... | ... | ... |
| 97 | ... | ... | ... | ... | ... |
| 98 | ... | ... | ... | ... | ... |
| 99 | ... | ... | ... | ... | ... |
| 100 | ... | ... | ... | ... | ... |

| NO. | DESCRIPTION | QTY | UNIT | PRICE | TOTAL |
|-----|-------------|-----|------|-------|-------|
| 1 | ... | ... | ... | ... | ... |
| 2 | ... | ... | ... | ... | ... |
| 3 | ... | ... | ... | ... | ... |
| 4 | ... | ... | ... | ... | ... |
| 5 | ... | ... | ... | ... | ... |
| 6 | ... | ... | ... | ... | ... |
| 7 | ... | ... | ... | ... | ... |
| 8 | ... | ... | ... | ... | ... |
| 9 | ... | ... | ... | ... | ... |
| 10 | ... | ... | ... | ... | ... |
| 11 | ... | ... | ... | ... | ... |
| 12 | ... | ... | ... | ... | ... |
| 13 | ... | ... | ... | ... | ... |
| 14 | ... | ... | ... | ... | ... |
| 15 | ... | ... | ... | ... | ... |
| 16 | ... | ... | ... | ... | ... |
| 17 | ... | ... | ... | ... | ... |
| 18 | ... | ... | ... | ... | ... |
| 19 | ... | ... | ... | ... | ... |
| 20 | ... | ... | ... | ... | ... |
| 21 | ... | ... | ... | ... | ... |
| 22 | ... | ... | ... | ... | ... |
| 23 | ... | ... | ... | ... | ... |
| 24 | ... | ... | ... | ... | ... |
| 25 | ... | ... | ... | ... | ... |
| 26 | ... | ... | ... | ... | ... |
| 27 | ... | ... | ... | ... | ... |
| 28 | ... | ... | ... | ... | ... |
| 29 | ... | ... | ... | ... | ... |
| 30 | ... | ... | ... | ... | ... |
| 31 | ... | ... | ... | ... | ... |
| 32 | ... | ... | ... | ... | ... |
| 33 | ... | ... | ... | ... | ... |
| 34 | ... | ... | ... | ... | ... |
| 35 | ... | ... | ... | ... | ... |
| 36 | ... | ... | ... | ... | ... |
| 37 | ... | ... | ... | ... | ... |
| 38 | ... | ... | ... | ... | ... |
| 39 | ... | ... | ... | ... | ... |
| 40 | ... | ... | ... | ... | ... |
| 41 | ... | ... | ... | ... | ... |
| 42 | ... | ... | ... | ... | ... |
| 43 | ... | ... | ... | ... | ... |
| 44 | ... | ... | ... | ... | ... |
| 45 | ... | ... | ... | ... | ... |
| 46 | ... | ... | ... | ... | ... |
| 47 | ... | ... | ... | ... | ... |
| 48 | ... | ... | ... | ... | ... |
| 49 | ... | ... | ... | ... | ... |
| 50 | ... | ... | ... | ... | ... |
| 51 | ... | ... | ... | ... | ... |
| 52 | ... | ... | ... | ... | ... |
| 53 | ... | ... | ... | ... | ... |
| 54 | ... | ... | ... | ... | ... |
| 55 | ... | ... | ... | ... | ... |
| 56 | ... | ... | ... | ... | ... |
| 57 | ... | ... | ... | ... | ... |
| 58 | ... | ... | ... | ... | ... |
| 59 | ... | ... | ... | ... | ... |
| 60 | ... | ... | ... | ... | ... |
| 61 | ... | ... | ... | ... | ... |
| 62 | ... | ... | ... | ... | ... |
| 63 | ... | ... | ... | ... | ... |
| 64 | ... | ... | ... | ... | ... |
| 65 | ... | ... | ... | ... | ... |
| 66 | ... | ... | ... | ... | ... |
| 67 | ... | ... | ... | ... | ... |
| 68 | ... | ... | ... | ... | ... |
| 69 | ... | ... | ... | ... | ... |
| 70 | ... | ... | ... | ... | ... |
| 71 | ... | ... | ... | ... | ... |
| 72 | ... | ... | ... | ... | ... |
| 73 | ... | ... | ... | ... | ... |
| 74 | ... | ... | ... | ... | ... |
| 75 | ... | ... | ... | ... | ... |
| 76 | ... | ... | ... | ... | ... |
| 77 | ... | ... | ... | ... | ... |
| 78 | ... | ... | ... | ... | ... |
| 79 | ... | ... | ... | ... | ... |
| 80 | ... | ... | ... | ... | ... |
| 81 | ... | ... | ... | ... | ... |
| 82 | ... | ... | ... | ... | ... |
| 83 | ... | ... | ... | ... | ... |
| 84 | ... | ... | ... | ... | ... |
| 85 | ... | ... | ... | ... | ... |
| 86 | ... | ... | ... | ... | ... |
| 87 | ... | ... | ... | ... | ... |
| 88 | ... | ... | ... | ... | ... |
| 89 | ... | ... | ... | ... | ... |
| 90 | ... | ... | ... | ... | ... |
| 91 | ... | ... | ... | ... | ... |
| 92 | ... | ... | ... | ... | ... |
| 93 | ... | ... | ... | ... | ... |
| 94 | ... | ... | ... | ... | ... |
| 95 | ... | ... | ... | ... | ... |
| 96 | ... | ... | ... | ... | ... |
| 97 | ... | ... | ... | ... | ... |
| 98 | ... | ... | ... | ... | ... |
| 99 | ... | ... | ... | ... | ... |
| 100 | ... | ... | ... | ... | ... |



JOHN PAUL CONSTRUCTION
 80 HAMPSHIRE ROAD
 CUBICLES, DUCTS & VANITY UNITS
 FIRST FLOOR
 11 4228 2 D
 120 HSH 06.09.11