

A Scandinavian inspired stylish range of flat woven carpets

Practicality
Simplicity
Beauty

NORDFORM



danfloor
An Ulster Group Company

Original
Scandinavian
Design

NORDFORM

An authentic collection of Scandinavian style carpets designed for commercial office environments that value the benefits of pure, minimalistic style centred around simple, uncomplicated designs and functionality. Characterised by the use of earthy muted tones and natural materials enables the creation of genuine Scandinavian design concepts that bring a sense of calm to the busy office environment.



The Finest Carpet Yarn

The ECONYL® yarn, used to create Eco Weave, is an important factor contributing to the integrity and resilience of the carpet and goes a long way in determining the overall performance of the product.

The ECONYL® fibres used to manufacture this range results in a carpet designed to perform in the most demanding environments and is able to withstand high levels of traffic and heavy contact along with intensive commercial cleaning. This range falls into the highest of 3 commercial categories, class 33-heavy usage, which determines a carpets resistance to wear and change in appearance over time, resulting in a hardwearing, durable flooring solution.

Key features of ECONYL® include:

- Stain and soil resistance
- Enhanced texture and colour
- 100% sustainable and recyclable
- Solution dyed yarn
- Resilience to wear
- Colour fastness

Carpet with a Conscience

The NordForm collection promises not only exceptionally high performance and a variety of design possibilities but also maintains a strong environmental focus. The ECONYL® yarn used in Eco Weave is manufactured using pre and post-consumer waste, including items like abandoned fishing nets and old carpets, making it 100% sustainable whilst helping to reduce the amount of waste material in our oceans, resulting in a cleaner and safer environment for marine life.



WOOLMIX

Wool Fibre - A Natural Carpet Yarn

Wool is strong, static-resistant and pleasing to touch. The 80/20 wool mix fibre used to manufacture our wool ranges has a number of benefits that make it ideal for use in busy commercial environments including:

Strong and Resilient – Wool carpet provides superior performance over many years as it offers unique resilience and long lasting durability. The natural crimp of wool offers valuable 'bounce-back' so that pile compression is resisted and the effects of tracking and shading are reduced.

Easy Care – Wool is a natural fibre that has an inbuilt resistance to soiling due to its natural oils and its outer surface of microscopic scales.

Soft and Warm – Wool carpet adds luxurious underfoot comfort and warmth to a room and acts as an insulator improving heat retention and energy efficiency. Whilst also absorbing sound and cushioning a room against sound reverberation.

Fire Retardant – Wool is naturally fire resistant and has a slow ignition rate. Tests show that it is self-extinguishing, meeting many safety regulations without additional treatments. It is favoured in contract locations for this reason.

Anti-Allergy – The minute scales on the fibre's surface will hold airborne particles until vacuumed which helps to improve indoor air quality.

Natural and Sustainable – Grown on sheep, which graze freely, wool is both 100% natural, fully sustainable and biodegradable.

Indoor Climate Labelling

All carpets within the Nordform Collection have been awarded the Eurofins Gold Indoor Air Comfort Certification. This classification demonstrates that both our factory production and products themselves have low product emissions and is a sign of danfloor's focus on quality and contribution to a healthy indoor environment.

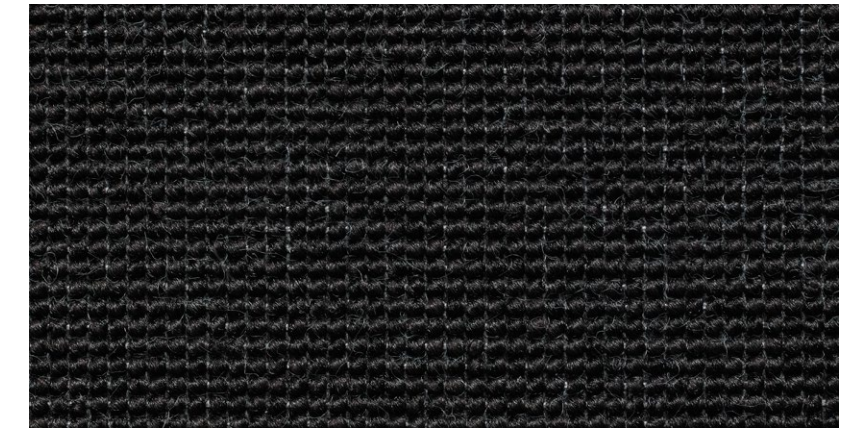
A product certified and labelled under the Eurofins Gold Indoor Air Comfort scheme has been subject to extensive testing, and comes with documentation that it does not contain harmful materials or potential allergens.



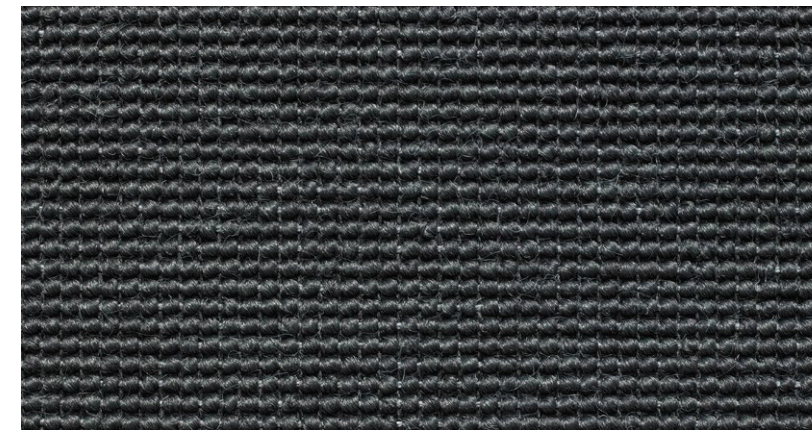
ECO WEAVE



3920 028



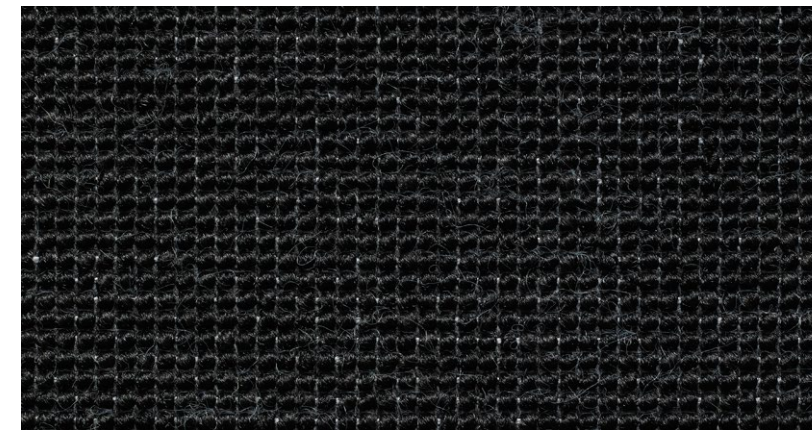
3920 057



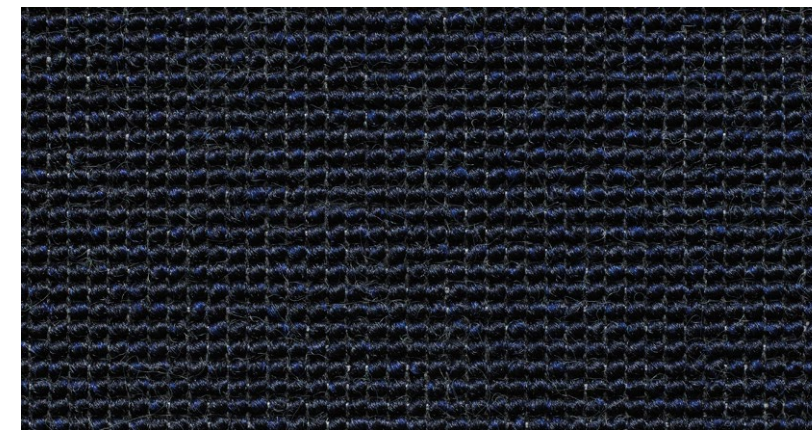
3920 073



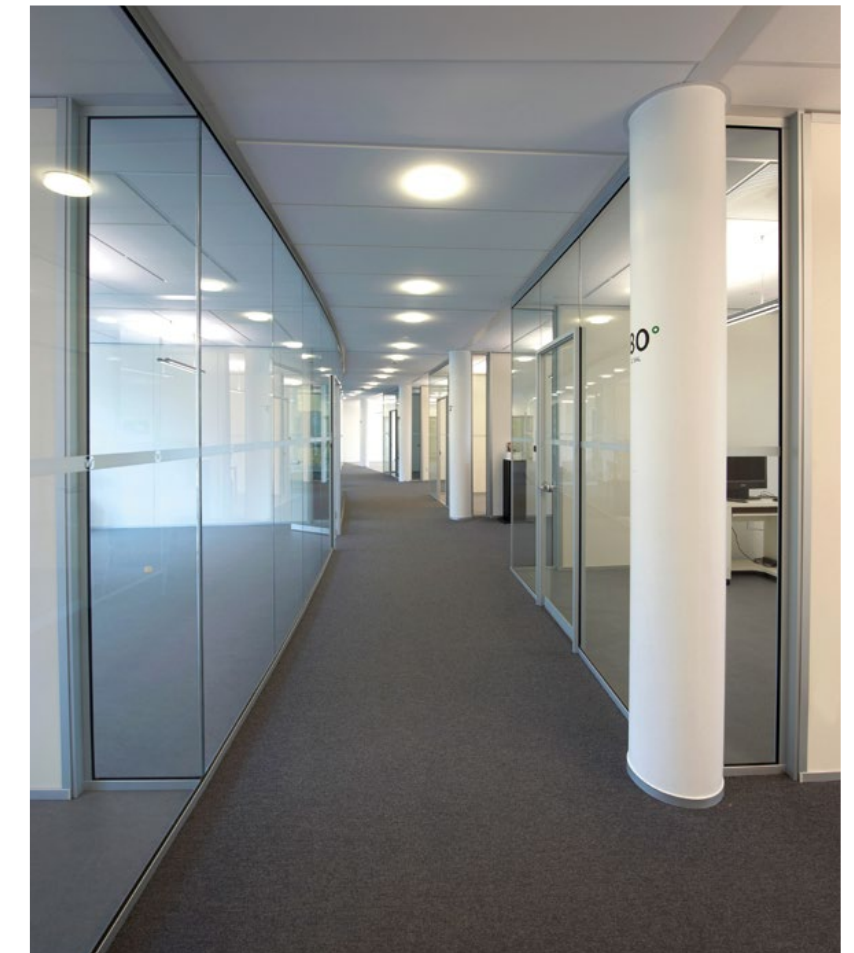
3920 076



3920 078



3920 086



CLASSIC



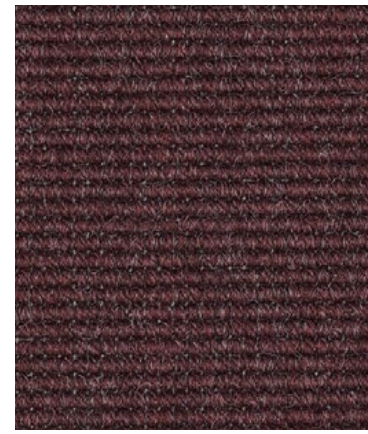
3906 024



3906 057



3906 045 Min. 400 SQM



3906 092 Min. 400 SQM



3906 032



3906 040



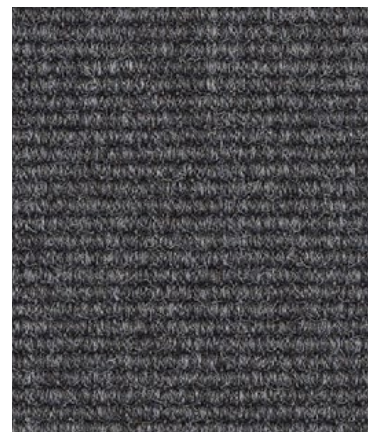
3906 050



3906 056



3906 070



3906 074



3906 077



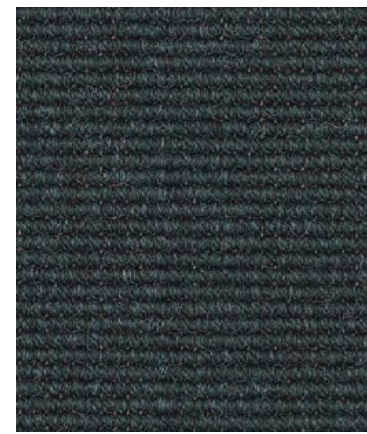
3906 072



3906 084 Min. 400 SQM



3906 069 Min. 400 SQM



3906 066 Min. 400 SQM



3906 078

NORDFORM



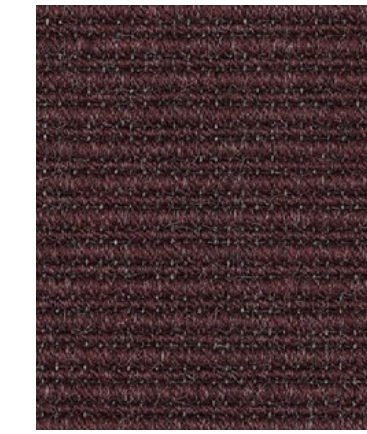
3907 024



3907 057



3907 045 Min. 400 SQM



3907 092 Min. 400 SQM



3907 032



3907 040



3907 050



3907 056



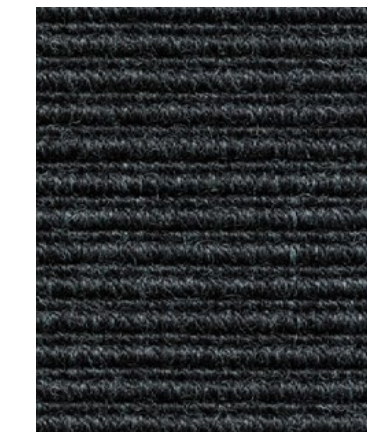
3907 070



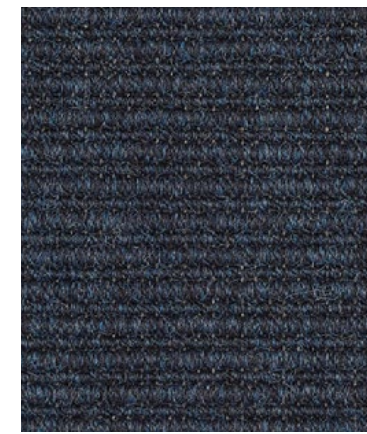
3907 074



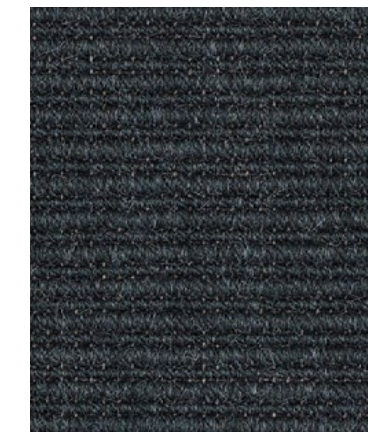
3907 077



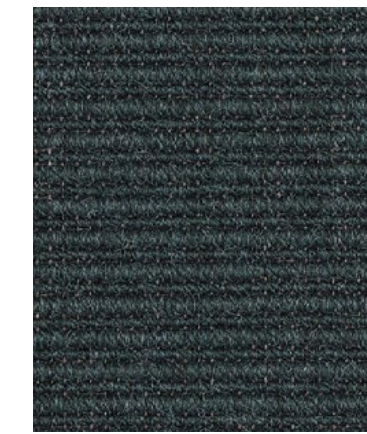
3907 072



3907 084 Min. 400 SQM



3907 069 Min. 400 SQM



3907 066 Min. 400 SQM



3906 078

CLASSIC XL



NORDFORM

WOOL CLASSIC



2912 078



2912 077



2912 076

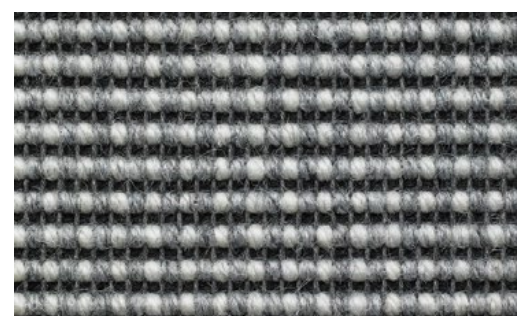


2912 074

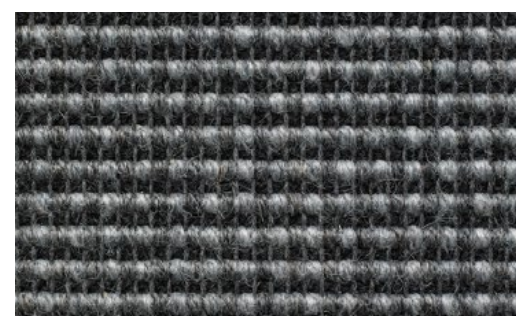


2912 058

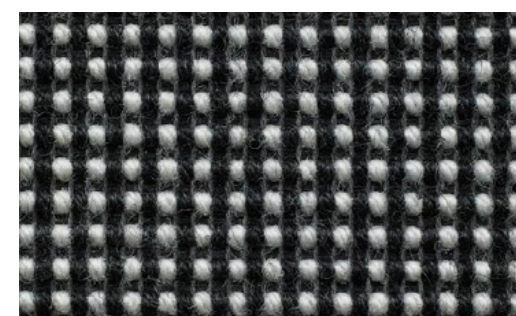
WOOL RIBS



2905 070



2905 075



2905 078

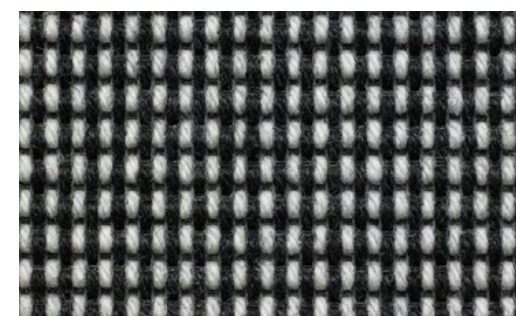
WOOL LINES



2907 070

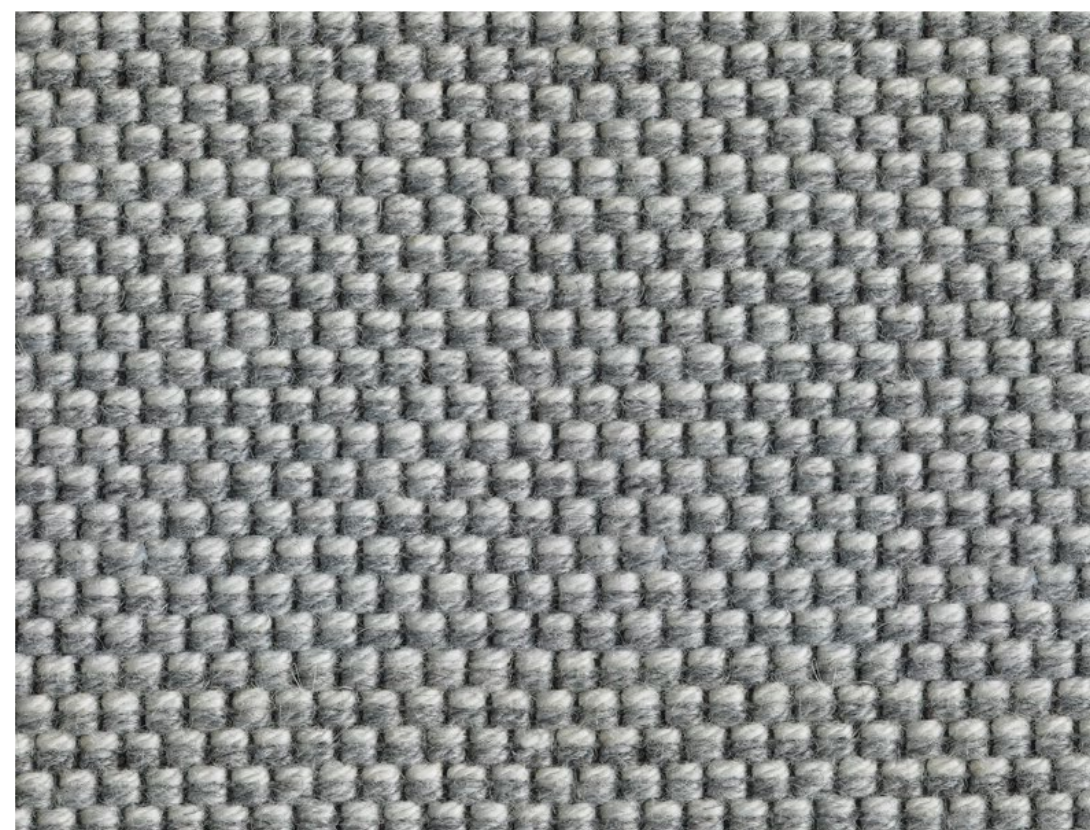


2907 075

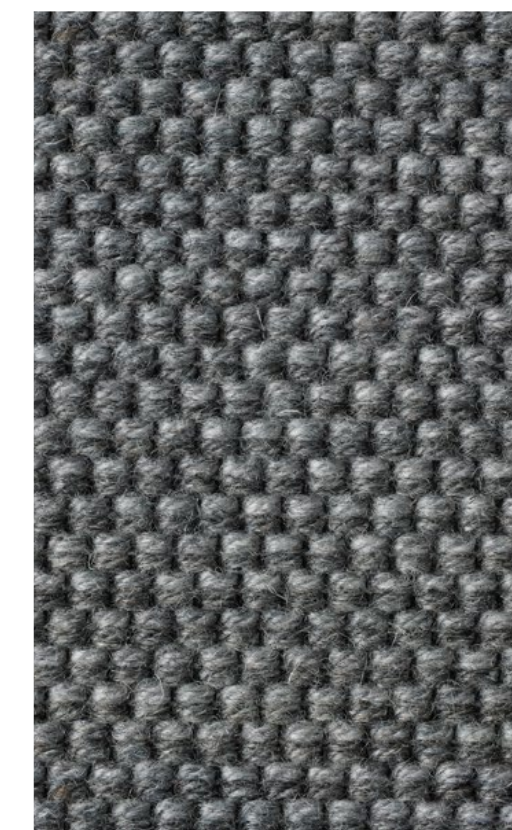


2907 078

WOOL SQUARE

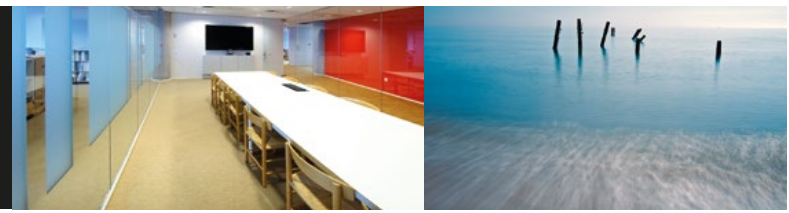


2910 070



2910 075

SPECIFICATIONS



TECHNICAL SPECIFICATION	CLASSIC	CLASSIC XL	ECO WEAVE	WOOL CLASSIC	WOOL RIBS WOOL SQUARE WOOL LINES
Design Pattern Identification	3906	3907	3920	2912	2905, 2910, 2907
Method of Manufacture	Flat Woven	Flat Woven	Flat Woven	Flat Woven	Flat Woven
Product Width	Rolls, ca. 4.00 Mtr	Rolls, ca. 4.00 Mtr	Rolls, ca. 4.00 Mtr	Rolls, ca. 4.00 Mtr	Rolls, ca. 4.00 Mtr
Roll Length	ca. 25 m	ca. 25 m	ca. 25 m	ca. 25 m	ca. 25 m
Pile Material	100% Polyamide Nylon 6.6	100% Polyamide Nylon 6.6	100% Polyamide Nylon Solution Dyed ECONYL®	80% Pure New Wool 20% Polyamide Nylon 6.6	80% Pure New Wool 20% Polyamide Nylon 6.6
Total Weight	Latex KT Bac ca. 2775 g/m ² Textile TD Bac ca. 2500 g/m ²	Latex KT Bac ca. 2775 g/m ² Textile TD Bac ca. 2500 g/m ²	Latex KT Bac ca. 2450 g/m ² Textile TD Bac ca. 2200 g/m ²	ca. 2400 g/m ²	ca. 2100 g/m ²
Pile Weight	ca. 700 g/m ²	ca. 700 g/m ²	ca. 560 g/m ²	ca. 675 g/m ²	ca. 475 g/m ²
Total Height	Latex KT Bac ca. 4.00mm Textile TD Bac ca. 3.00mm	Latex KT Bac ca. 4.00mm Textile TD Bac ca. 3.00mm	Latex KT Bac ca. 4.00mm Textile TD Bac ca. 3.00mm	ca. 5.00 mm	ca. 5.00 mm
Pile Height	ca. 2.00 mm	ca. 2.00 mm	ca. 2.00 mm	ca. 3.00 mm	ca. 3.00 mm
Tuff Density	ca. 136,000 m ²	ca. 136,000 m ²	ca. 160,000 m ²	ca. 130,000 m ²	ca. 120,000 m ²
Tile Size					
Tile Pr. Box					
Special Treatment	i-Protect	i-Protect			
Backing	Latex KT Bac/Textile TD Bac	Latex KT Bac/Textile TD Bac	Latex KT Bac/Textile TD Bac	Textile TD Bac	Textile TD Bac
PERFORMANCE TEST					
Wear Classification EN1307	33 – Commercial Use – Heavy	33 – Commercial Use – Heavy	33 – Commercial Use – Heavy	32 – Commercial Use - General	32 – Commercial Use – General
Castor Chair Suitability EN 985	A – Continuous Use	A – Continuous Use	A – Continuous Use	B – Occasional Use	B – Occasional Use
Burn Classification EN 13501-1	Cfl-s1	Cfl-s1	Cfl-s1	Cfl-s1	Cfl-s1
Electrostatic Properties EN 1815	≤ 2 KV @ 25% RH	≤ 2 KV @ 25% RH	≤ 2 KV @ 25% RH	≤ 2 KV @ 25% RH	≤ 2 KV @ 25% RH
Thermal Resistance EN 12524	Latex KT Bac ca. 0.07 m ² K/W Textile TD Bac ca. 0.05 m ² K/W	Latex KT Bac ca. 0.07 m ² K/W Textile TD Bac ca. 0.05 m ² K/W	ca. 0.08 m ² K/W	ca. 0.08 m ² K/W	ca. 0.08 m ² K/W
Reduction of Transmitted Impact Noise BS EN ISO 140-8	ca. 17/18 dB	ca. 17/18 dB	ca. 17/18 dB	ca. 17 dB	ca. 17 dB
Colourfast Light (1 - 8 Scale) EN ISO 150 B02	5	5	5	4	4
Luxury Rating EN 8543	LC1	LC1	LC1	LC1	LC1

Tolerances

Product specifications are derived from averages in yarn, fibre, temperature and colour which may vary within the standard industry tolerances. Performance is not affected by such variations.

Care & Maintenance

Please visit www.danfloor.co.uk/installation-maintenance for information on cleaning and maintenance.

danfloor
An Ulster Group Company

danfloor Uk Ltd
106 Longmead Road, Emerald Park, Emersons Green
Bristol BS16 7FG, United Kingdom
T: 0333 014 3132, F: 0333 014 3134
E: info@danfloor.co.uk

Danfloor Denmark
danfloor a/s, Østerbro 9, DK-6933 Kibæk
T: +45 9699 1900, F: +45 9699 1999

Innovative Carpet Solutions



www.danfloor.co.uk