

EVOLUTION
COLLECTION

SCAPE



A SUBTLE LINEAR EFFECT
ADDS TEXTURE AND DEPTH

danfloor
An Ulster Group Company



SCAPE

A SUBTLE LINEAR EFFECT ADDS TEXTURE AND DEPTH

SCAPE, part of the EVOLUTION Collection, has a subtle linear effect that will add texture and depth to your floor. The subtle design adds consistency to the natural pattern and creates a simple yet elegant range. Scape has been incorporated as a base layer for a number of the EVOLUTION ranges so that it can be laid alongside the other designs to enhance an interior scheme and continue the collection from one room to another.



The finest carpet yarn

The ECONYL® fibres used to make the EVOLUTION Collection result in a carpet designed to perform in the most demanding environments and is able to withstand high levels of traffic and heavy contact along with intensive commercial cleaning. The range falls into the highest of 3 commercial categories, class 33-heavy usage, which determines a carpet's resistance to wear and change in appearance over time, resulting in a hardwearing, durable flooring solution.

Key features of ECONYL® fibre include:

- Stain and soil resistance
- Solution dyed yarn
- Enhanced texture and colour
- Resilience to wear
- 100% regenerated and recyclable
- Colour fastness



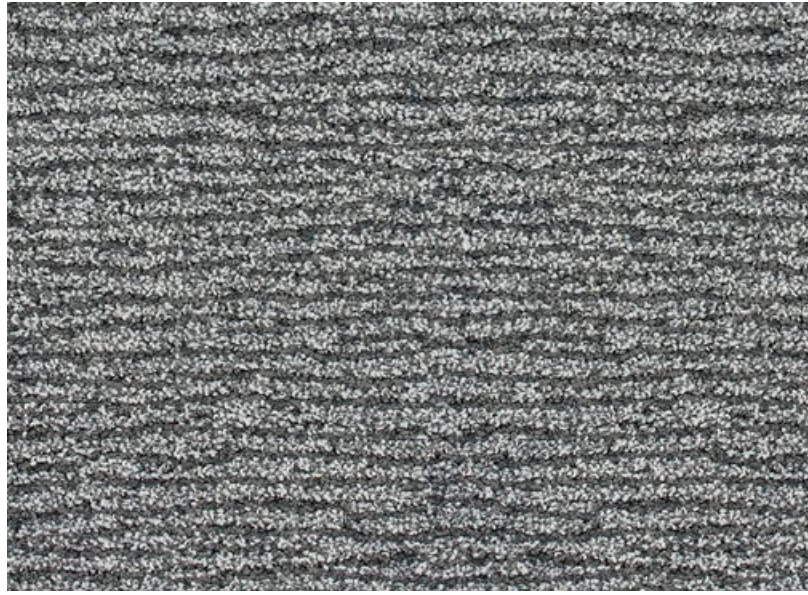
Sustainable design

The EVOLUTION Collection has been certified with an A to A+ BRE rating, depending upon application.

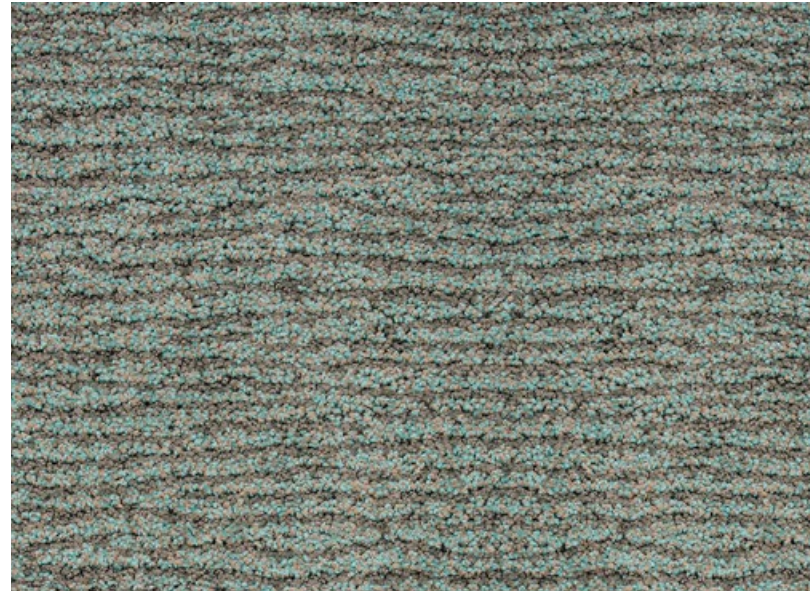
The BRE Environmental Assessment Method is the leading and most widely used environmental assessment method for buildings. It sets the standard for best practice in sustainable design and has become the de facto measure used to describe a building's environmental performance.

Certification gives you confidence that products and services will perform as expected. It ensures that they meet - and continue to meet - appropriate standards, through a combination of regular company audits and a schedule of ongoing tests.

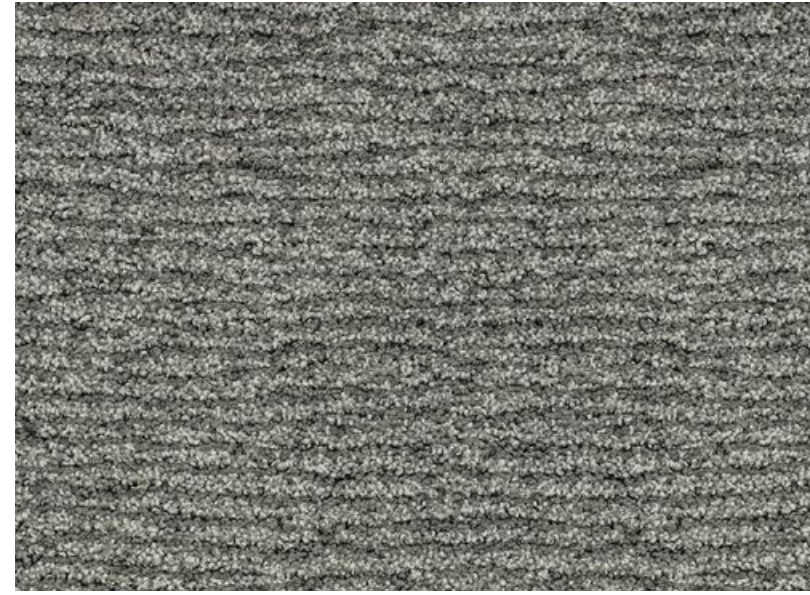




3666 676



3666 661



3666 673



3666 650



3666 678



3666 644

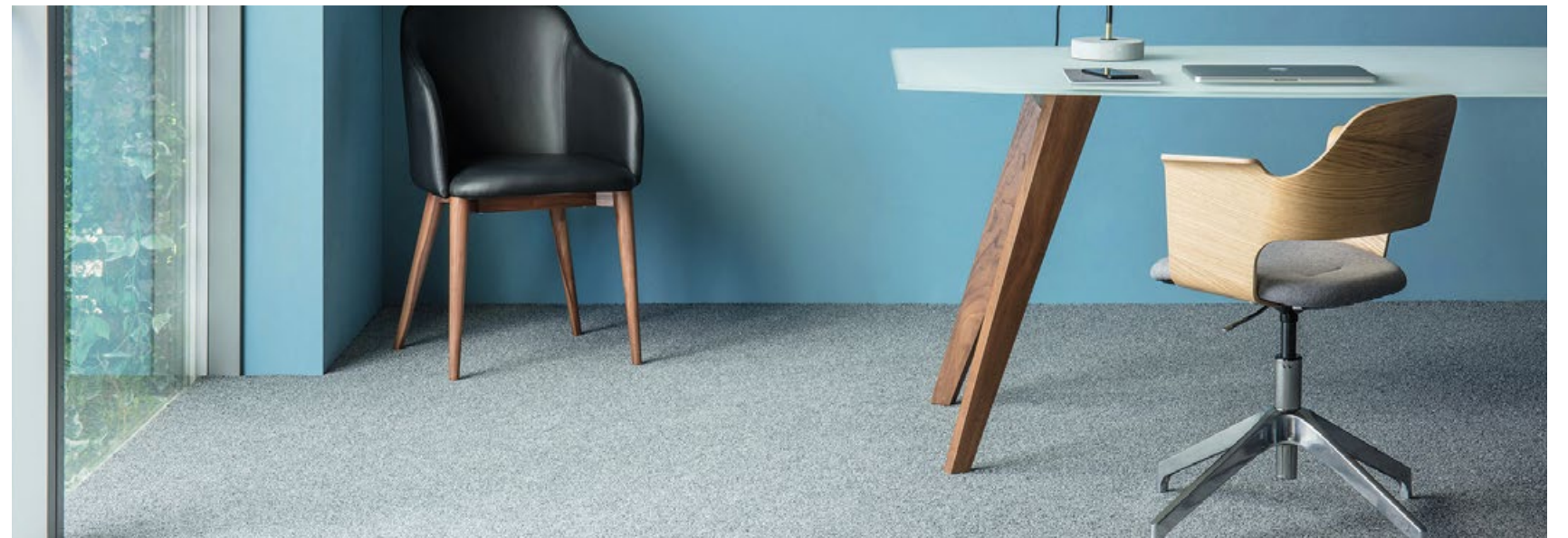


3666 622

CARPET SAMPLES

Colour selection is an essential part of the interior design process which is why we offer a free sample service.

To order sample material visit www.danfloor.co.uk/samples



TECHNICAL SPECIFICATION	SCAPE	STANDARD
Design Pattern Identification	3666 6	
Method of Manufacture	Tufted "Colorpoint LCL"	
Gauge	1/8" Gauge	
Measures	Rolls approx 4.00 Mts wide	
Surface	Cut Pile Patterned	
Colouration	Solution Dyed	
Yarn Fibre	100% ECONYL® Regenerated Nylon 6 yarn	
Pattern Repeat	Width Length Scape 80cm 38cm	
Total Weight M²	3250 Grams / M²	ISO 8543
Inserted Pile Weight M²	1250 Grams / M²	ISO 8543
Total Thickness	7.50 mm	ISO 1765
Pile Height Above Substrate	5.00 mm	
Tuft Density	Approx 154,000 / M²	
Primary Backing	Woven Polyester	
Backing	Ti BAC (Textile Impervious)	
PERFORMANCE TEST		
Flammability / Burning Classification	Cfl S1	EN13501 -1
Electrostatic Properties	Permanent Antistatic <2 KW	
Thermal Resistance (TOG)	1.5	BS4745:2005
Classification EN1307	33 Commercial Use	ISO 10361
Castor Chair Suitability	Class A (Continuous use)	EN985, Test A
Reduction of Transmitted Impact Noise	28 dB	BS EN ISO 140-8
Colour Fastness to Light	>6	EN ISO 105 BO2
Luxury rating	LC4	EN1307
Stain Release (Scale 1-8) 8 is Best	6	3M test procedure
Soiling Test (Scale 1-5) 5 is Best	3	ISO 11378 - 1:2000
VOC Emissions Test	Indoor Air Comfort GOLD	Eurofins

Colour Selection

Although the EVOLUTION Collection is designed to minimise visual soiling, it is strongly recommended that care be taken in choosing colours to suit particular locations. Medium to dark coloured carpets disguise soiling more effectively than plain, light shades and should therefore be considered for high traffic areas such as corridors.

Tolerances

Product specifications are derived from averages in yarn, fibre, temperature and colour which may vary within the standard industry tolerances. Performance is not affected by such variations.

Wastage

All joins should be made using a trimming tool to avoid fraying and joints sealed using a seaming adhesive. Careful consideration should be given to pattern repeats across the width and length when planning your installation.

Pressure Markings

Pressure marks result during the manufacturing of large rolls of carpet. These faint lines can also be a result of rolls resting in racks where they are subjected to considerable pressure. As a result unavoidable pressure lines are often visible when the carpet is first unrolled, but should not cause any concern. The lines will not affect performance and will disappear within a few weeks of normal use. Thorough and regular vacuuming can also assist with removing the lines.

Care & Maintenance

Instructions for the maintenance of carpets are available from danfloor upon request or can be downloaded from www.danfloor.co.uk. It is recommended that a maintenance schedule be initiated from the date of installation to achieve maximum life expectancy of the product.

Ti BAC Impervious

Manufactured to conform to the latest standards in impermeability, Ti BAC impervious by danfloor guarantees the customer protection against sub-floor contamination. Situated beneath the carpet substrate and above the textile backing the impervious membrane has been designed to allow sub-floor moisture evaporation via the textile backing whilst preventing surface liquid penetration.

Suitable for use with under floor heating systems the Ti BAC acts as a non-thermal insulator, reduces sound impact levels and provides a cost effective built in cushioned underlay.

Installation

Prior to cutting and installation all carpets should be unrolled and inspected to ensure all quality standards have been met. When installing impervious backed carpets we recommend that joins should be kept to a minimum and that no joins should be placed within the main body of a room or any location that could undermine the integrity or functionality of an impervious backed carpet. Prior to installation approval should be sought with the client as to the location of all joins. Installation must be carried out by an approved carpet installer in accordance to BS5325:2001. A full Installation Guide, including recommended adhesives, can be downloaded from www.danfloor.co.uk



ECONYL®
ENDLESS POSSIBILITIES

BREEAM®

danfloor
An Ulster Group Company

danfloor Uk Ltd
106 Longmead Road, Emerald Park, Emersons Green
Bristol BS16 7FG, United Kingdom
T: 0333 014 3132, F: 0333 014 3134
E: info@danfloor.co.uk

Danfloor Denmark
danfloor a/s, Østerbro 9, DK-6933 Kibæk
T: +45 9699 1900, F: +45 9699 1999

Innovative Carpet Solutions