

EVOLUTION  
COLLECTION

GLAZE



MODERN ANGULAR PATTERN  
INSPIRED BY LANDSCAPES

**danfloor**  
An Ulster Group Company



**GLAZE**

MODERN ANGULAR PATTERN INSPIRED BY LANDSCAPES

Inspired by the natural landscape and geometric angular shapes Glaze allows you to utilise pattern in a stylish and minimalistic way. The tessellation of the sharp angled lines creates a strong presence with a design that depicts structure and order. The use of triangular shapes creates a sense of progression, purpose and direction in a gentle pattern that will enhance any interior design scheme.

**ECONYL®**  
ENDLESS POSSIBILITIES

### The finest carpet yarn

The ECONYL® fibres used to make the EVOLUTION Collection result in a carpet designed to perform in the most demanding environments and is able to withstand high levels of traffic and heavy contact along with intensive commercial cleaning. The range falls into the highest of 3 commercial categories, class 33-heavy usage, which determines a carpet's resistance to wear and change in appearance over time, resulting in a hardwearing, durable flooring solution.

Key features of ECONYL® fibre include:

- Stain and soil resistance
- Solution dyed yarn
- Enhanced texture and colour
- Resilience to wear
- 100% regenerated and recyclable
- Colour fastness

**BREEAM®**

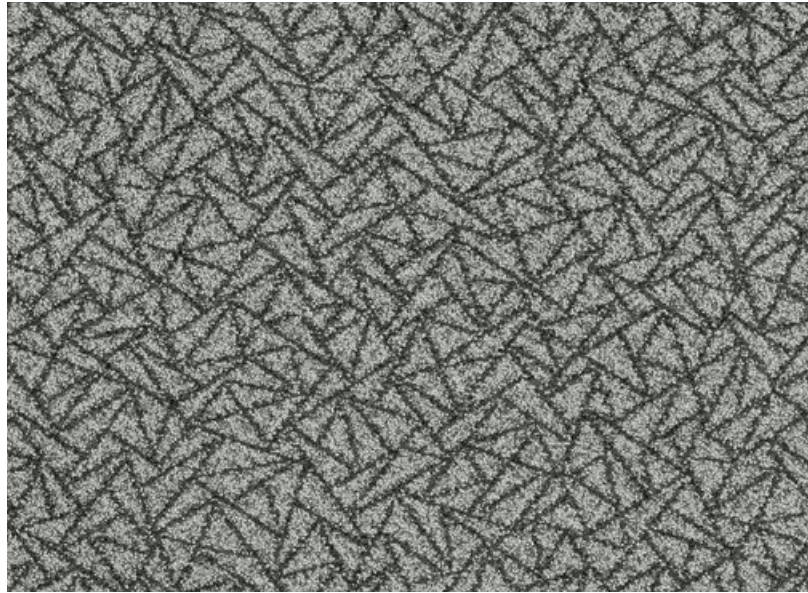
### Sustainable design

The EVOLUTION Collection has been certified with an A to A+ BRE rating, depending upon application.

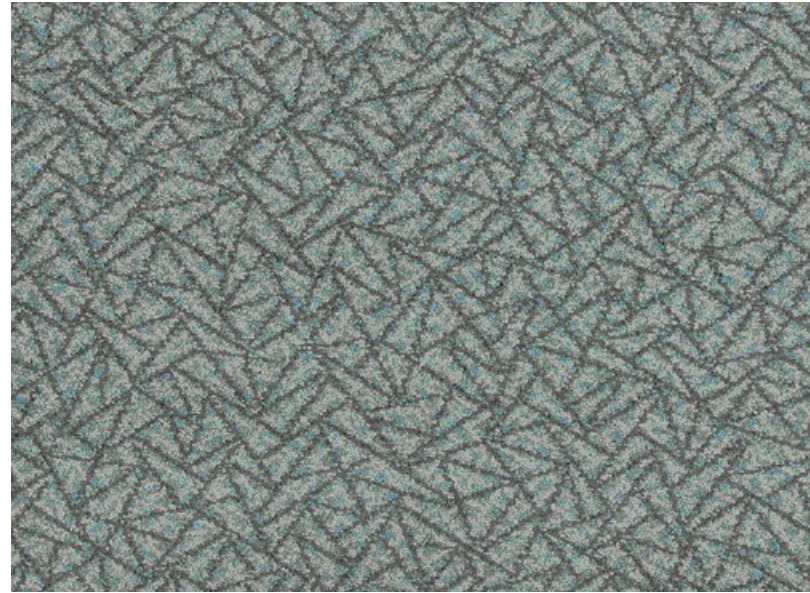
The BRE Environmental Assessment Method is the leading and most widely used environmental assessment method for buildings. It sets the standard for best practice in sustainable design and has become the de facto measure used to describe a building's environmental performance.

Certification gives you confidence that products and services will perform as expected. It ensures that they meet - and continue to meet - appropriate standards, through a combination of regular company audits and a schedule of ongoing tests.

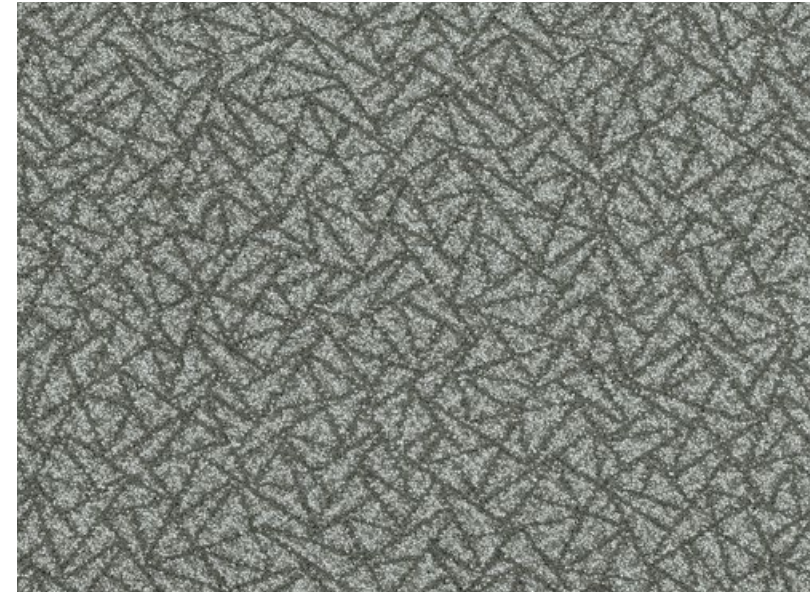




3666 376



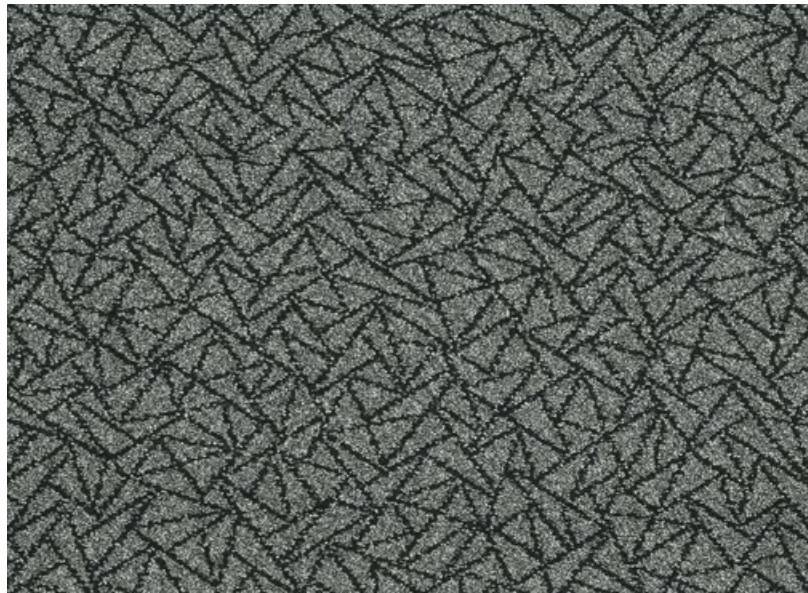
3666 361



3666 373



3666 350



3666 378



3666 344



3666 322



3666 387



## CARPET SAMPLES

Colour selection is an essential part of the interior design process which is why we offer a free sample service.

To order sample material visit [www.danfloor.co.uk/samples](http://www.danfloor.co.uk/samples)

TECHNICAL SPECIFICATION	GLAZE	STANDARD
<b>Design Pattern Identification</b>	3666 3	
<b>Method of Manufacture</b>	Tufted "Colorpoint LCL"	
<b>Gauge</b>	1/8" Gauge	
<b>Measures</b>	Rolls approx 4.00 Mts wide	
<b>Surface</b>	Cut Pile Patterned	
<b>Colouration</b>	Solution Dyed	
<b>Yarn Fibre</b>	100% ECONYL® Regenerated Nylon 6 yarn	
<b>Pattern Repeat</b>	Width Length Glaze 80cm 38cm	
<b>Total Weight M²</b>	3250 Grams / M²	ISO 8543
<b>Inserted Pile Weight M²</b>	1250 Grams / M²	ISO 8543
<b>Total Thickness</b>	7.50 mm	ISO 1765
<b>Pile Height Above Substrate</b>	5.00 mm	
<b>Tuft Density</b>	Approx 154,000 / M²	
<b>Primary Backing</b>	Woven Polyester	
<b>Backing</b>	Ti BAC (Textile Impervious)	
<b>PERFORMANCE TEST</b>		
<b>Flammability / Burning Classification</b>	Cfl S1	EN13501 -1
<b>Electrostatic Properties</b>	Permanent Antistatic <2 KW	
<b>Thermal Resistance (TOG)</b>	1.5	BS4745:2005
<b>Classification EN1307</b>	33 Commercial Use	ISO 10361
<b>Castor Chair Suitability</b>	Class A (Continuous use)	EN985, Test A
<b>Reduction of Transmitted Impact Noise</b>	28 dB	BS EN ISO 140-8
<b>Colour Fastness to Light</b>	>6	EN ISO 105 BO2
<b>Luxury rating</b>	LC4	EN1307
<b>Stain Release (Scale 1-8) 8 is Best</b>	6	3M test procedure
<b>Soiling Test (Scale 1-5) 5 is Best</b>	3	ISO 11378 - 1:2000
<b>VOC Emissions Test</b>	Indoor Air Comfort GOLD	Eurofins

## Colour Selection

Although the EVOLUTION Collection is designed to minimise visual soiling, it is strongly recommended that care be taken in choosing colours to suit particular locations. Medium to dark coloured carpets disguise soiling more effectively than plain, light shades and should therefore be considered for high traffic areas such as corridors.

## Tolerances

Product specifications are derived from averages in yarn, fibre, temperature and colour which may vary within the standard industry tolerances. Performance is not affected by such variations.

## Wastage

All joins should be made using a trimming tool to avoid fraying and joints sealed using a seaming adhesive. Careful consideration should be given to pattern repeats across the width and length when planning your installation.

## Pressure Markings

Pressure marks result during the manufacturing of large rolls of carpet. These faint lines can also be a result of rolls resting in racks where they are subjected to considerable pressure. As a result unavoidable pressure lines are often visible when the carpet is first unrolled, but should not cause any concern. The lines will not affect performance and will disappear within a few weeks of normal use. Thorough and regular vacuuming can also assist with removing the lines.

## Care & Maintenance

Instructions for the maintenance of carpets are available from danfloor upon request or can be downloaded from [www.danfloor.co.uk](http://www.danfloor.co.uk). It is recommended that a maintenance schedule be initiated from the date of installation to achieve maximum life expectancy of the product.

## Ti BAC Impervious

Manufactured to conform to the latest standards in impermeability, Ti BAC impervious by danfloor guarantees the customer protection against sub-floor contamination. Situated beneath the carpet substrate and above the textile backing the impervious membrane has been designed to allow sub-floor moisture evaporation via the textile backing whilst preventing surface liquid penetration.

Suitable for use with under floor heating systems the Ti BAC acts as a non-thermal insulator, reduces sound impact levels and provides a cost effective built in cushioned underlay.

## Installation

Prior to cutting and installation all carpets should be unrolled and inspected to ensure all quality standards have been met. When installing impervious backed carpets we recommend that joins should be kept to a minimum and that no joins should be placed within the main body of a room or any location that could undermine the integrity or functionality of an impervious backed carpet. Prior to installation approval should be sought with the client as to the location of all joins. Installation must be carried out by an approved carpet installer in accordance to BS5325:2001. A full Installation Guide, including recommended adhesives, can be downloaded from [www.danfloor.co.uk](http://www.danfloor.co.uk)



**ECONYL®**  
ENDLESS POSSIBILITIES

**BREEAM®**

**danfloor**  
An Ulster Group Company

**danfloor Uk Ltd**  
106 Longmead Road, Emerald Park, Emersons Green  
Bristol BS16 7FG, United Kingdom  
T: 0333 014 3132, F: 0333 014 3134  
E: [info@danfloor.co.uk](mailto:info@danfloor.co.uk)

**Danfloor Denmark**  
danfloor a/s, Østerbro 9, DK-6933 Kibæk  
T: +45 9699 1900, F: +45 9699 1999

Innovative Carpet Solutions