

ETON BASIC

10 Year Limited Wear Warranty

Soil and Stain Resistant

Castor Chair Warranted

Innovative Colours

Heavy Contract



Durable. Comfort. Performance

danfloor
An Ulster Group Company

ETON

A range of carpets for the healthcare, commercial, education and retail sectors.

Manufactured from the Antron Legacy fibre the ETON Basic range offers heavy wear characteristics, proven performance, anti-static properties and durability. Available in eighteen contemporary colours and two backing types ETON Basic provides extra comfort, thermal insulation and sound absorption making the range ideal for the commercial, education and retail sectors.



Eton is manufactured with Antron's polyamide 6.6. This nylon yarn has a significant number of hydrogen bonds and an optimum molecular chain alignment meaning its performance and appearance retention far exceeds those carpets made with a polyamide 6 yarn.

Low soiling

The Antron 6.6 fibre features a hollow filament fibre shape that helps hide soiling. The internal voids refract and diffuse light, therefore enhancing soil hiding capability. Also the smaller surface area of the hollow filament fibre minimises soil accumulation, making the carpet easier to clean.

Wear resistance and good appearance retention

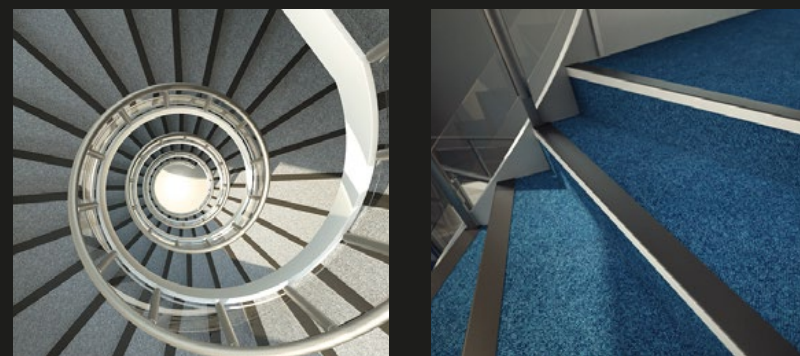
Carpets made with the 6.6 nylon have strong hydrogen bonds which require greater heat or mechanical energy to break them. As a result the carpet also has better texture retention, resistance to matting and crushing and greater resilience and recovery after pressure.

Heat resistance

The class of reaction to fire performance Bfl and Cfl according to EN 13501-1 are the highest possible categories for textile floor coverings. These classifications are achieved easily with Antron carpet fibre.

Antistatic

Antron carpet fibre contains fine, conductive polyamide fibres that protect against electrostatic charges throughout the life of the carpet.



antron 

It's all about the fibre

Fibre influences many aspects of a carpets appearance and performance. The Antron fibre has been tried and trusted for over 40 years and offers a great deal of flooring possibilities in the commercial interiors sector.

ETON



3198.030

ETON BASIC

ETON BASIC



3198 072



3198 080



3198 060



3198 070



3198 020



3198 071



3198 073



3198 082



3198 090



3198 030



3198 022



3198 074



3198 076



3198 084



3198 097



3198 077



3198 050



3198 079

ETON BASIC

TECHNICAL SPECIFICATION	ETON BASIC	STANDARD
Design Pattern Identification	3198	
Method of Manufacture	Tufted Loop Pile	DIN ISO 2424
Gauge	5/32" Gauge	DIN ISO 2424
Measures	Rolls, approx. 400cm wide	DIN 3018
Surface	Loop Pile	DIN ISO 2424
Colouration	Multi coloured	DIN ISO 2424
Pile Material	100% Polyamide - Invista Antron Legacy 6.6	Dir. 71/307/CEE mod
Primary Backing	100% PP Woven	DIN ISO 2424
Backing	Latex KT / Textile TD Bac	DIN ISO 2424
Total Weight	KT Bac approx 2650 g/m ² TD Bac approx 2100 g/m ²	ISO 8543
Pile Weight	approx. 620 g/m ²	DIN ISO 2424
Total Height	approx. 6.00 mm	ISO 8543
Pile Height	approx. 4.00 mm	ISO 1766
Number of Tufts	approx. 95.000 Mt Sq	ISO 1763
FUNCTIONAL PROPERTIES		
Wear Classification	Commercial-normal Class 33	EN 1307
PHYSICAL PROPERTIES		
Surface Resistance	approx. ≤10/9 Ohm	ISO 10965
Earthing properties*	approx. ≤10/9 Ohm	DIN IEC 1340-4-1
Sound Impact	approx. 25dB	ISO 140-8
Burning Classification	Cfl-s1	DIN EN 13501-1
Light Fastness	Min 5	ISO 105-B02
Water Fastness	Min 4	EN ISO 105 E01
Resistance to Abrasion	Min 3	EN ISO 105 X12

Colour Selection

Although the ETON Basic range is designed to minimise visual soiling, it is strongly recommended that care be taken in choosing colours to suit particular locations. Medium to dark coloured carpets disguise soiling more effectively than plain, light shades and should therefore be considered for high traffic areas such as corridors.

Tolerances

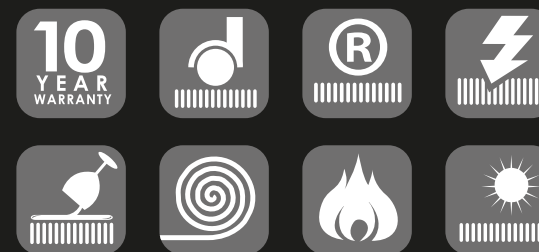
Product specifications are derived from averages in yarn, fibre, temperature and colour which may vary within the standard industry tolerances. Performance is not affected by such variations.

Care & Maintenance

Carpet should be cleaned daily with a vacuum cleaner, preferably one with a beater action. Spillages should be taken up promptly and surface stains removed by an appropriate method as soon as possible. Instructions for the maintenance of carpets are available from danfloor upon request or can be downloaded from www.danfloor.co.uk. It is recommended that a maintenance schedule be initiated from the date of installation to achieve maximum life expectancy of the product. Chair pads are required under roller castor chairs to prevent accelerated wear and to preserve appearance retention. Please note that loop pile carpets may be damaged if not adequately protected from sharp objects.

Installation

Prior to cutting and installation all carpets should be unrolled and inspected to ensure all quality standards have been met. Approval should be sought with the client as to the location of all joins. Installation must be carried out by an approved carpet installer in accordance to BS5325:2001. A full Installation Guide, including recommended adhesives, can be downloaded from www.danfloor.co.uk



antron. 

danfloor
An Ulster Group Company

Innovative Carpet Solutions

danfloor Uk Ltd
106 Longmead Road, Emerald Park, Emersons Green
Bristol BS16 7FG, United Kingdom
T: 0333 014 3132, F: 0333 014 3134
E: info@danfloor.co.uk

Danfloor Denmark
danfloor a/s, Østerbro 9, DK-6933 Kibæk
T: +45 9699 1900, F: +45 9699 1999

www.danfloor.co.uk