

EQUINOX™

STRIPE

Soiling and Stain Resistant

Solution Dyed Fibre

Anti-microbial

BRE Certified

Impervious



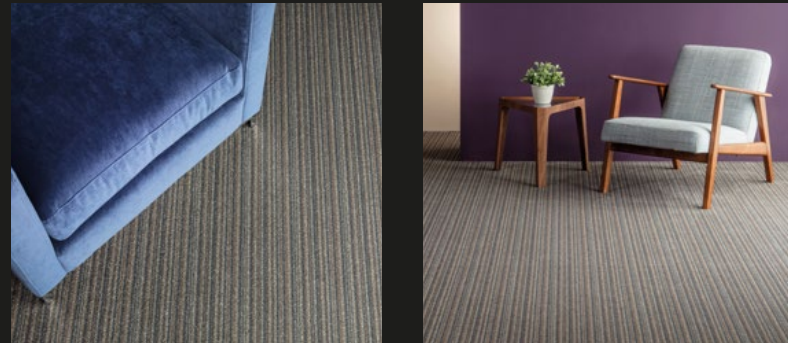
Striking. Modern. Refreshing

danfloor
An Ulster Group Company

EQUINOX™

STRIPE

The modern Equinox Stripe is a cut pile, solution dyed carpet that offers exceptional performance, superior styling and a comprehensive warranty, making it a must for any interior design scheme. The versatile Equinox Stripe has a varied colour bank, compiled from colours across the Equinox Collection, and is available in 1250 grams allowing this range to be used within a variety of settings from hospitality to healthcare and locations from bedrooms to corridors.



The finest carpet yarn

Carpet fibre determines the integrity of your carpet and influences many aspects such as surface structure, colour fastness, resilience to wear and effectiveness in soil and stain resistance.

danfloor's Prism™ fibre has a unique cross section which means the fibre is able to refract light; creating a carpet which can deliver purity in colour and defuse any visual soiling.

Prism™ is ideal for use within the healthcare and commercial markets and is a firm choice when selecting carpets for environments that are subject to regular soiling and commercial cleaning.

Key features of Prism™ include:

- Stain and soil resistance
- Inherently anti-static
- Resilience to wear
- Enhanced texture and colour
- Solution dyed yarn
- Colour fastness

Create a co-ordinated and striking interior design scheme

BREEAM®

Setting the standards for sustainable design

The Equinox Collection has full BRE certification providing you with Cradle to Grave Eco-point scores and Green Guide Ratings.

The BRE Environmental Assessment Method is the leading and most widely used environmental assessment method for buildings. It sets the standard for best practice in sustainable design and has become the de facto measure used to describe a building's environmental performance. Certification gives you confidence that products and services will perform as expected. It ensures that they meet - and continue to meet - appropriate standards, through a combination of regular company audits and a schedule of ongoing tests. Our Equinox range has received certified Green Guide ratings ranging from A to A+ dependent upon application.

Our Green Guide ratings reflect how carefully we monitor the environmental impact of our products and provides independent verification of the work we have undertaken to enhance the environmental credentials of our products.

BI·OME MEDICAL

Advanced Antimicrobial Technology

BI-OME® is an antimicrobial treatment applied to a number of our healthcare carpets. BI-OME® has been tested by L'Institut Pasteur de Lille and is a revolutionary technology which provides a permanent barrier against microbes.

BI-OME® is a non-leaching, permanent coating on the carpet fibres. The nano-coating is specially designed to deactivate microorganisms when they come into contact with the carpet fibres by physically stabbing the membrane of the microbe and electrocuting the biochemicals within it.

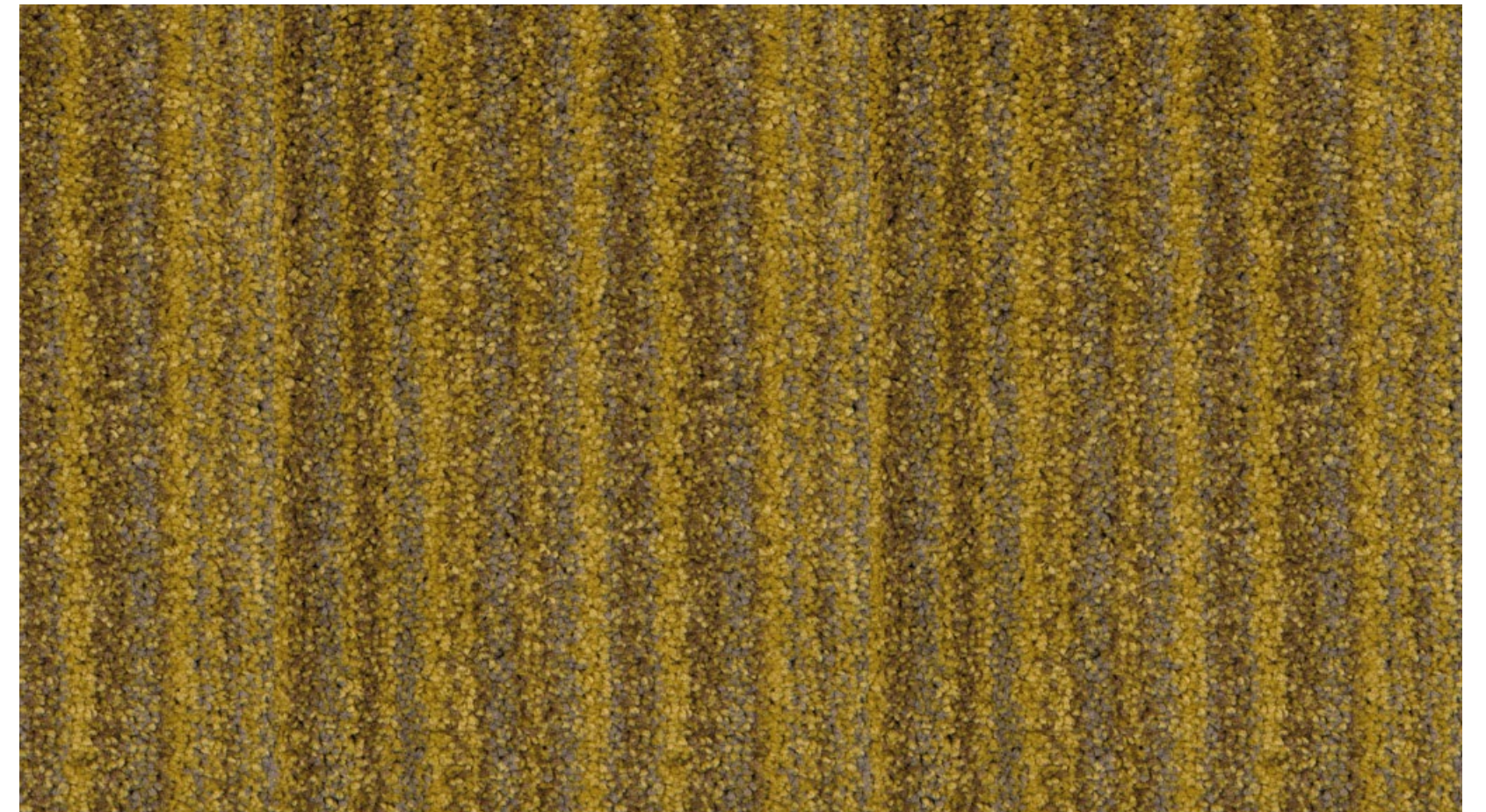
BI-OME® is important for anyone needing to either reduce odours or increase health protection. It is ideal for sectors where carpeting is used near or around food and drink, such as in the healthcare, education and hospitality sectors. BI-OME® remains functional even when subject to an intense cleaning and maintenance schedule.

The benefits of BI-OME® technology includes:

- Stops the growth of bacteria that causes MRSA and fungal growth which are the major causes of most fabric odour problems
- is not harmful to humans or the environment
- reduces the smells created by yeast, fungus and bacteria in carpet
- reduces the risk of cross contamination
- contains no arsenic, heavy metals, or polychlorinated phenols.

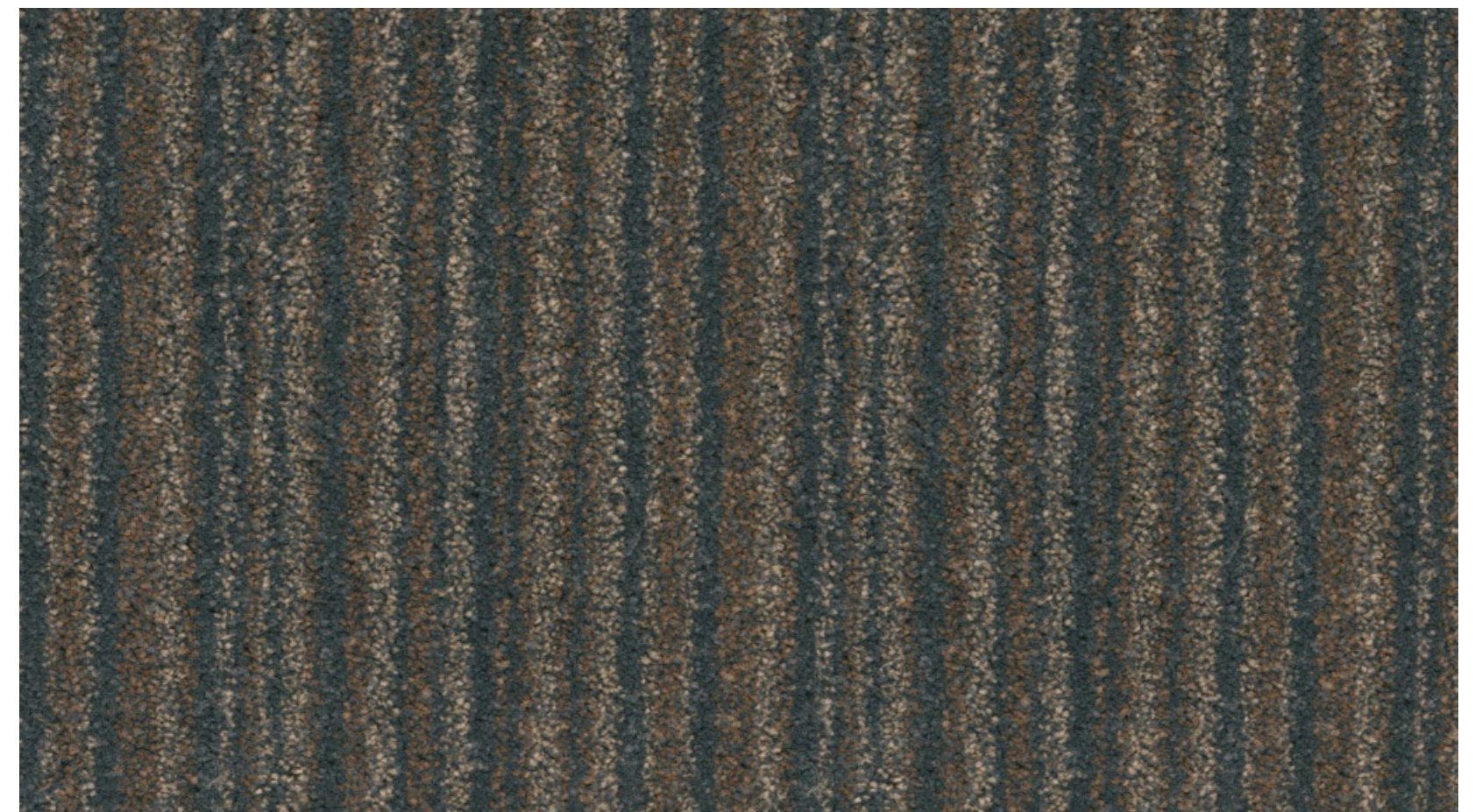
For further information on the benefits of the BI-OME® technology, please visit www.danfloor.co.uk/features/antimicrobial/

EQUINOX STRIPE



3557 242 Adonia

LRV: 16.96



3557 074 Odyssey

LRV: 7.95

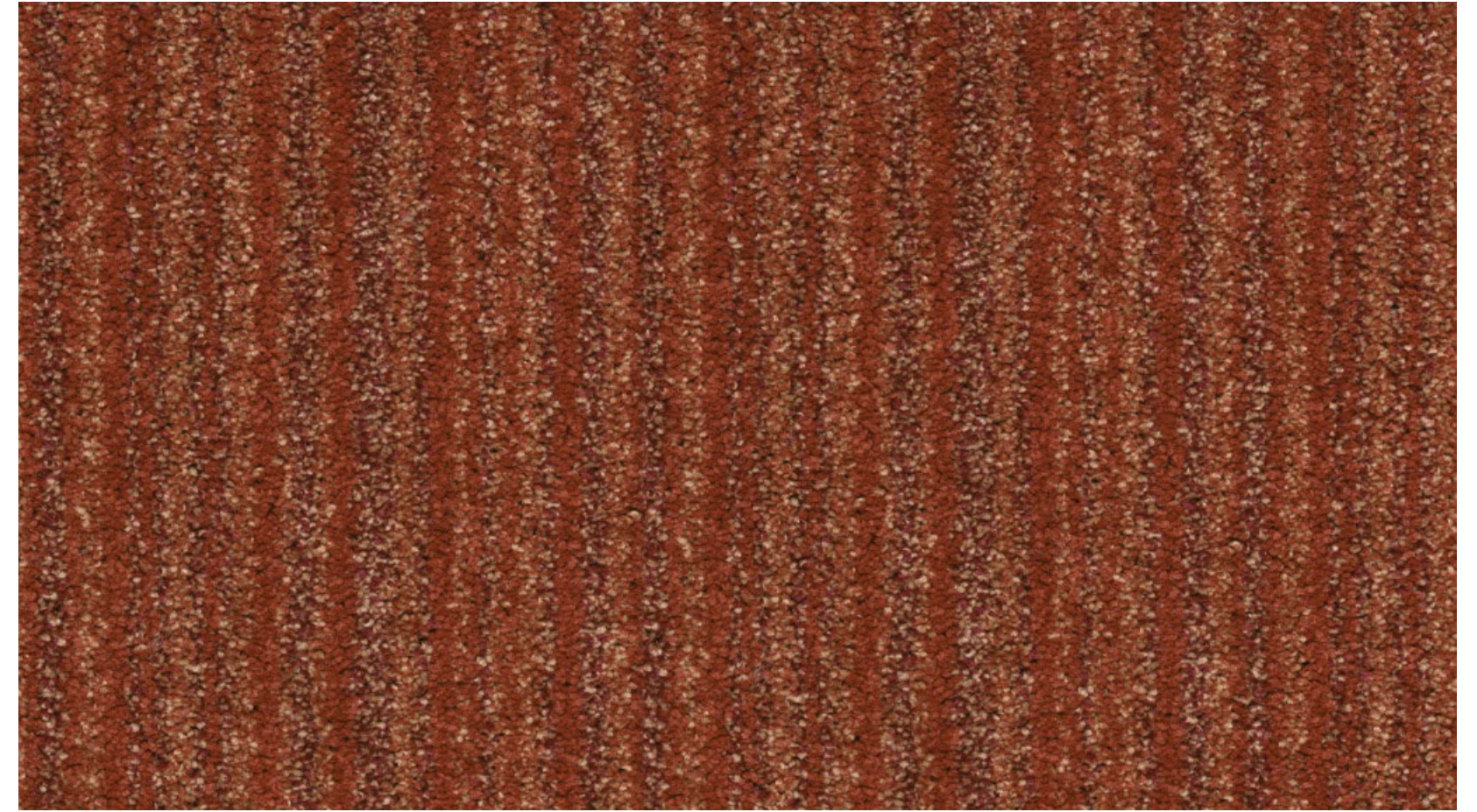
EQUINOX STRIPE



3557 154 Arcadia

LRV: 20.57

EQUINOX STRIPE



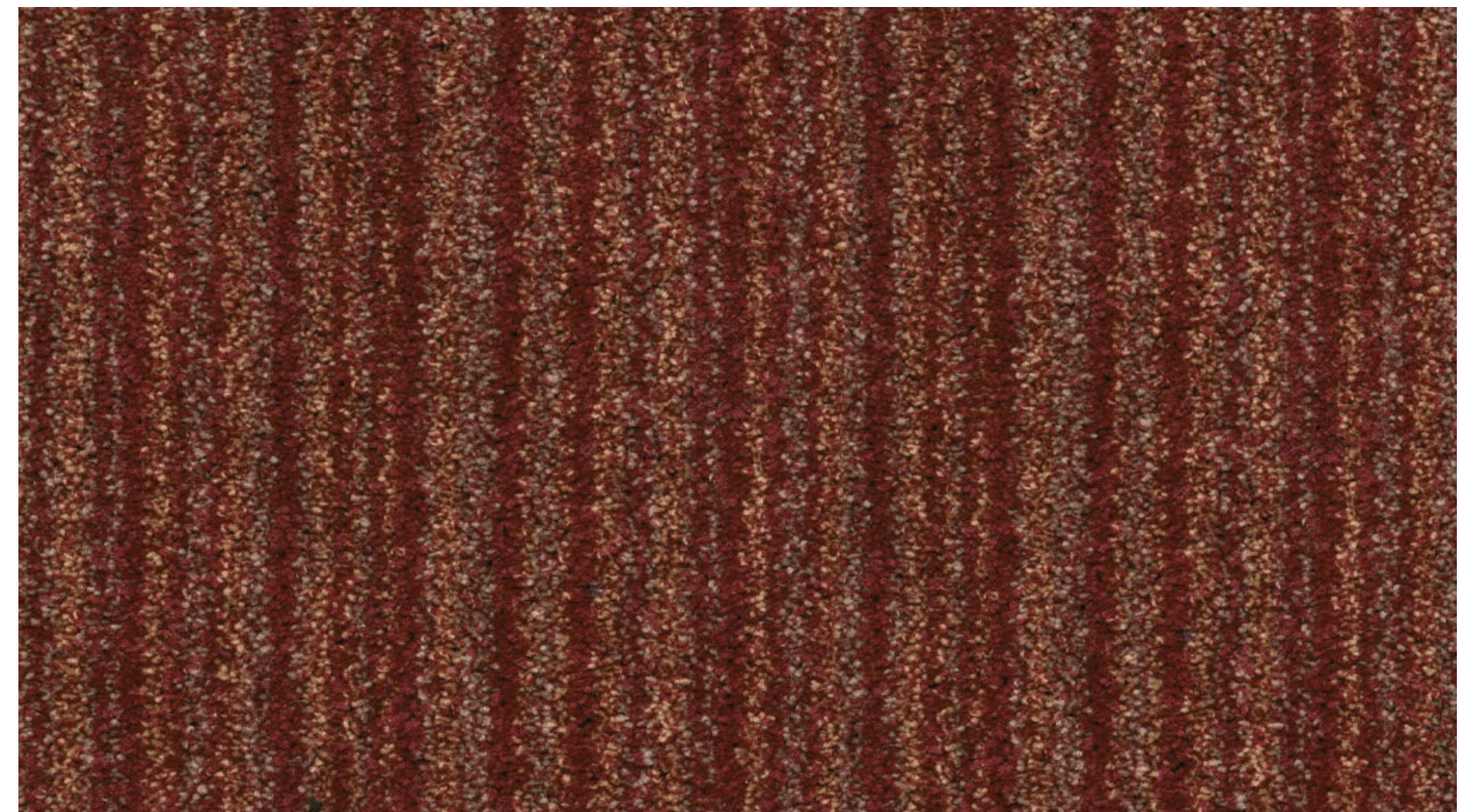
3557 144 Calypso

LRV: 9.36



3557 117 Galileo

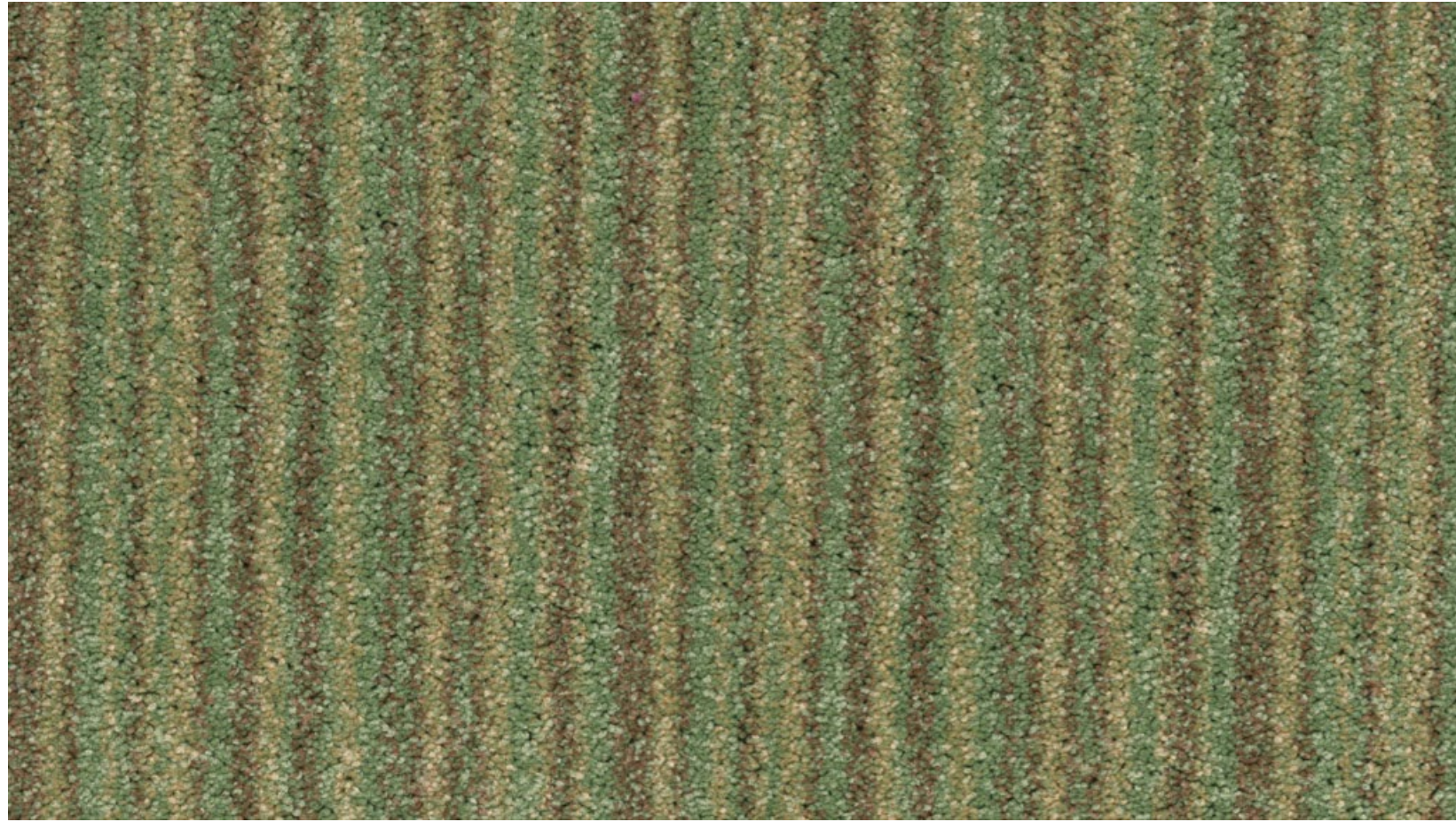
LRV: 14.57



3557 196 Horizon

LRV: 5.94

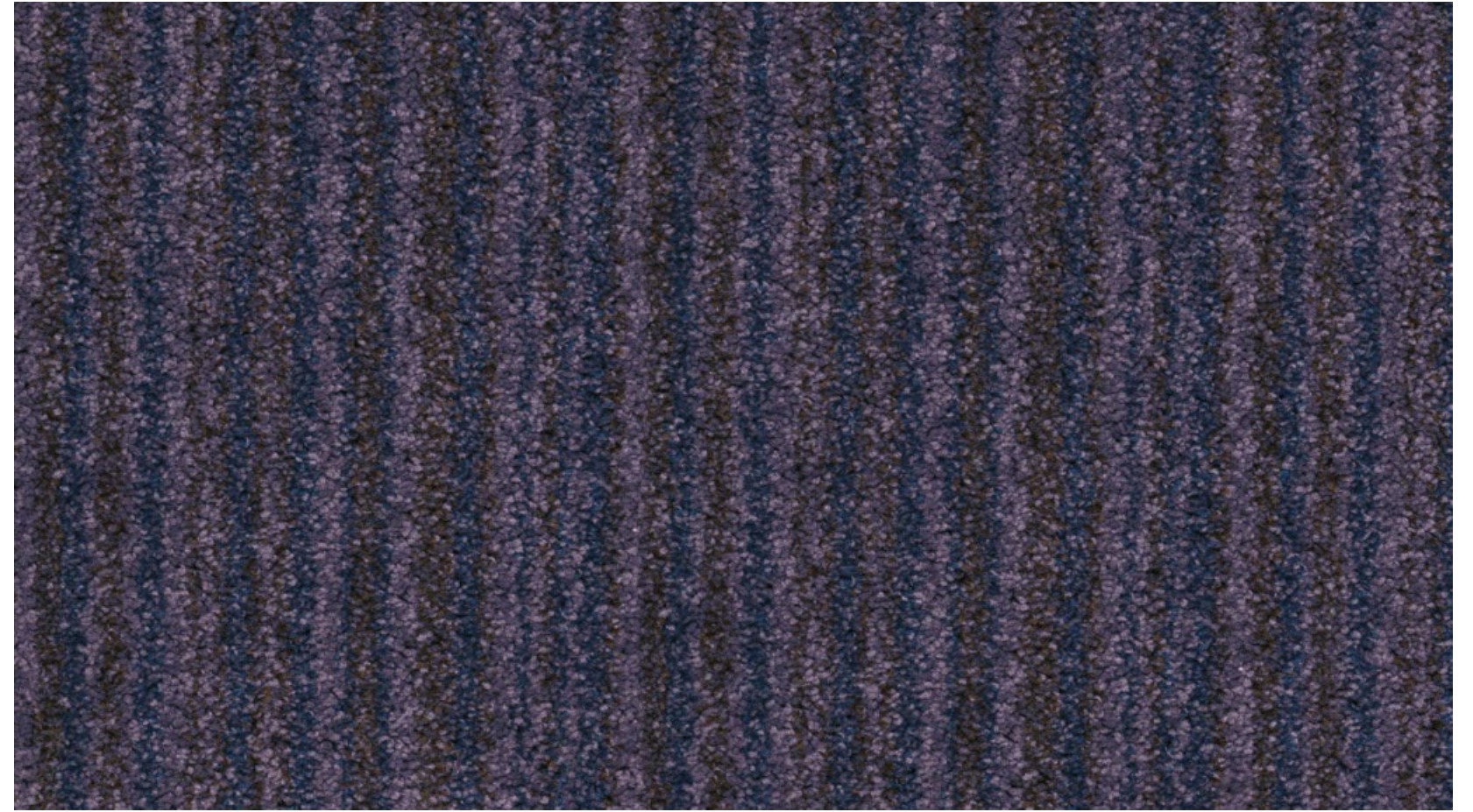
EQUINOX STRIPE



3557 161 Legacy

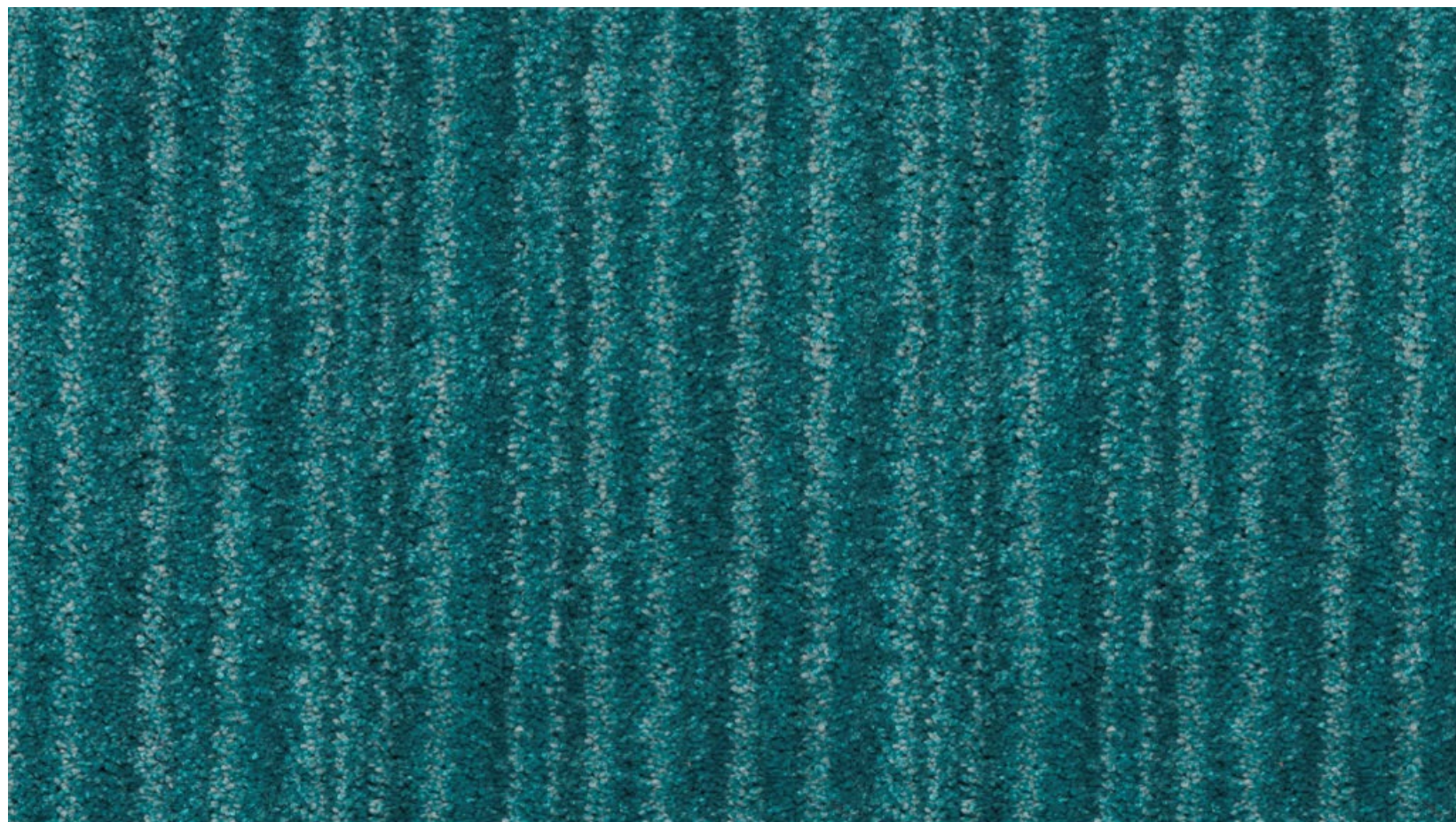
LRV: 18.69

EQUINOX STRIPE



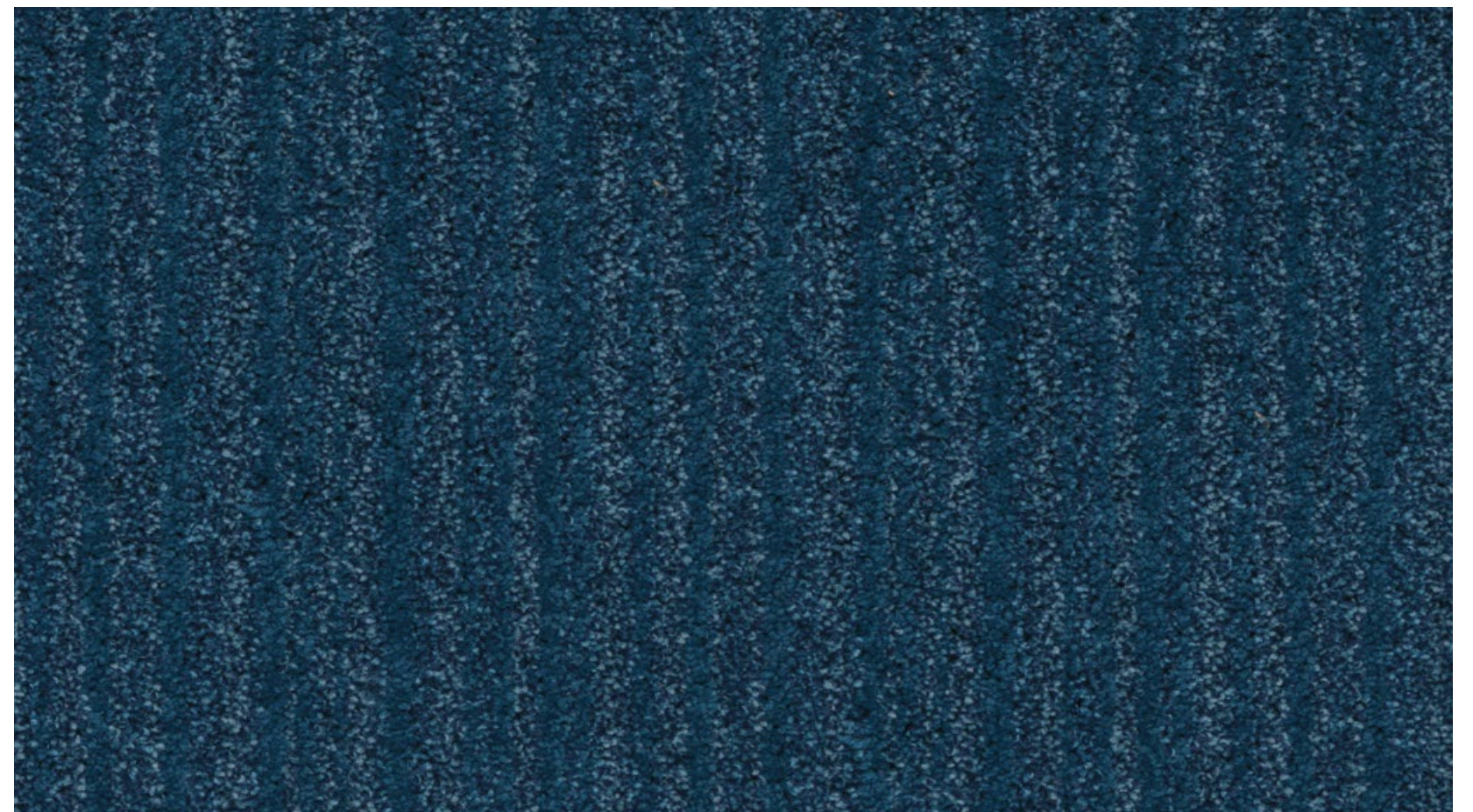
3557 198 Renaissance

LRV: 5.37



3557 168 Oceanic

LRV: 10.30



3557 186 Fair Seas

LRV: 5.42

TECHNICAL SPECIFICATION	EQUINOX™ STRIPE	STANDARD
Design Pattern Identification	3557	
Method of Manufacture	Tufted Cut Pile	
Pattern Repeat	15cm	
Gauge	1/8" Gauge	
Measures	Rolls, approx. 400cm wide	
Surface	Cut Pile Heat Set	
Colouration	Solution Dyed	
Pile Material	Prism Fibre	
Primary Backing	Woven Polypropylene	
Total Weight	approx. 3300 g/m ²	
Pile Weight	approx. 1250 g/m ²	
Total Height	approx. 10 mm	
Pile Height	approx. 5.00 mm	
Tuft Density	approx. 185,000 Mt Sq	
Backing	Aqua Bac Impervious	
PERFORMANCE TEST		
Wear Classification	Class 32	EN 1307
Flammability / Hot Nut Test	Low Radius of Char - Pass	BS 4790
Burning Classification	Efl	EN 13501-1
Electrostatic Properties	1.5 kv @ 25% RH	BS ISO 6356
Thermal Resistance	1.51 Tog	BS 4745 (ISO 8302)
Reduction of Transmitted Impact Noise	29dB	BS EN ISO 140-8
Acoustics - Measurement of sound absorption in a reverberation room	Classification D	BS EN ISO 354:2003
Colour Fastness		
Light (1-8) Scale	Min 5	
Rub Fastness		
Water (1-5) Scale	Min 5	
Luxury Rating	LC4	EN ISO 1307

Colour Selection

Although the Equinox range is designed to minimise visual soiling, it is strongly recommended that care be taken in choosing colours to suit particular locations. Medium to dark coloured carpets disguise soiling more effectively than plain, light shades and should therefore be considered for high traffic areas such as corridors.

Tolerances

Product specifications are derived from averages in yarn, fibre, temperature and colour which may vary within the standard industry tolerances. Performance is not affected by such variations.

Pressure Markings

Pressure marks result during the manufacturing of large rolls of carpet. These faint lines can also be a result of rolls resting in racks where they are subjected to considerable pressure. As a result unavoidable pressure lines are often visible when the carpet is first unrolled, but should not cause any concern. The lines will not affect performance and will disappear within a few weeks of normal use. Thorough and regular vacuuming can also assist with removing the lines.

Care & Maintenance

Carpet should be cleaned daily with a vacuum cleaner, preferably one with a beater action. Spillages should be taken up promptly and surface stains removed by an appropriate method as soon as possible. Instructions for the maintenance of carpets are available from danfloor upon request or can be downloaded from www.danfloor.co.uk. It is recommended that a maintenance schedule be initiated from the date of installation to achieve maximum life expectancy of the product. Chair pads are required under roller castor chairs to prevent accelerated wear and to preserve appearance retention.

Aqua Bac Impervious

Manufactured to conform to the latest standards in impermeability, Aqua Bac impervious by danfloor guarantees the customer protection against sub-floor contamination. Situated beneath the carpet substrate and above the latex foam backing the impervious membrane has been designed to allow sub-floor moisture evaporation via the latex foam backing whilst preventing surface liquid penetration.

Suitable for use with under floor heating systems the Aqua Bac backing acts as a non thermal insulator, reduces sound impact levels and provides a cost effective built in cushioned underlay.

Installation

Prior to cutting and installation all carpets should be unrolled and inspected to ensure all quality standards have been met. When installing impervious backed carpets we recommend that joins should be kept to a minimum and that no joins should be placed within the main body of a room or any location that could undermine the integrity or functionality of an impervious backed carpet. Prior to installation approval should be sought with the client as to the location of all joins. Installation must be carried out by an approved carpet installer in accordance to BS5325:2001. A full Installation Guide, including recommended adhesives, can be downloaded from www.danfloor.co.uk



BIOME
MEDICAL

prism™



danfloor
An Ulster Group Company

danfloor Uk Ltd
106 Longmead Road, Emerald Park, Emersons Green
Bristol BS16 7FG, United Kingdom
T: 0333 014 3132, F: 0333 014 3134
E: info@danfloor.co.uk

Danfloor Denmark
danfloor a/s, Østerbro 9, DK-6933 Kibæk
T: +45 9699 1900, F: +45 9699 1999

Innovative Carpet Solutions

www.danfloor.co.uk