

A Scandinavian inspired stylish range of flat woven carpets

Practicality  
Simplicity  
Beauty

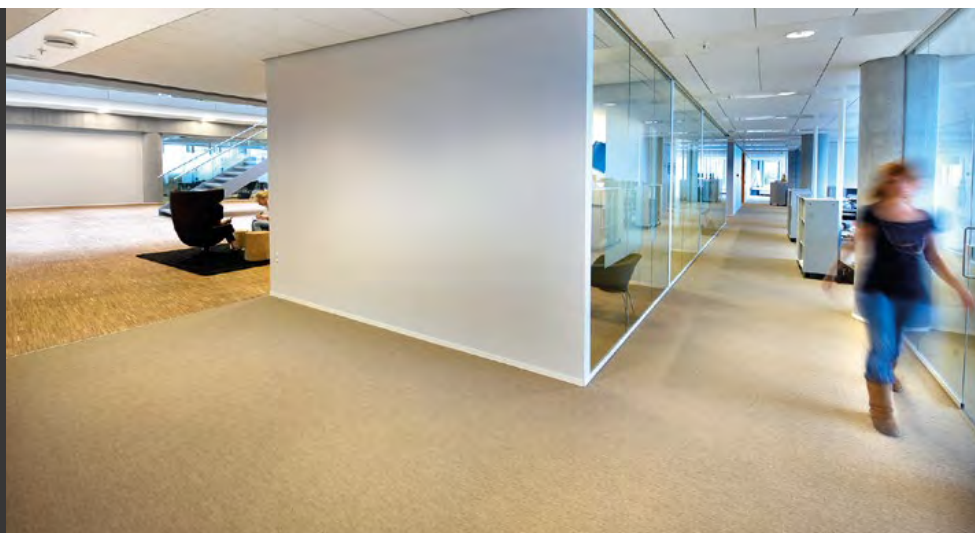
# NORDFORM



**danfloor**  
An Ulster Group Company

Original  
Scandinavian  
Design

# NORDFORM



An authentic collection of Scandinavian style carpets designed for commercial office environments that value the benefits of pure, minimalistic style centred around simple, uncomplicated designs and functionality. Characterised by the use of earthy muted tones and natural materials enables the creation of genuine Scandinavian design concepts that bring a sense of calm to the busy office environment.



## The Finest Carpet Yarn

The ECONYL yarn, used to create the Eco range, is an important factor contributing to the integrity and resilience of the carpet and goes a long way in determining the overall performance of the product.

The ECONYL fibres used to manufacture this range results in a carpet designed to perform in the most demanding environments and is able to withstand high levels of traffic and heavy contact along with intensive commercial cleaning. This range falls into the highest of 3 commercial categories, class 33-heavy usage, which determines a carpets resistance to wear and change in appearance over time, resulting in a hardwearing, durable flooring solution.

Key features of ECONYL include:

- Stain and soil resistance
- Enhanced texture and colour
- 100% sustainable and recyclable
- Solution dyed yarn
- Resilience to wear
- Colour fastness

## Carpet with a Conscience

The NordForm collection promises not only exceptionally high performance and a variety of design possibilities but also maintains a strong environmental focus. The ECONYL yarn used in the Eco range is manufactured using pre and post-consumer waste, including abandoned fishing nets, making it 100% sustainable whilst helping to reduce the amount of waste material in our oceans, resulting in a cleaner and safer environment for marine life.

## WOOLMIX

### Wool Fibre - A Natural Carpet Yarn

Wool is strong, static-resistant and pleasing to touch. The 80/20 wool mix fibre used to manufacture our wool ranges has a number of benefits that make it ideal for use in busy commercial environments including:

**Strong and Resilient** – Wool carpet provides superior performance over many years as it offers unique resilience and long lasting durability. The natural crimp of wool offers valuable 'bounce-back' so that pile compression is resisted and the effects of tracking and shading are reduced.

**Easy Care** – Wool is a natural fibre that has an inbuilt resistance to soiling due to its natural oils and its outer surface of microscopic scales.

**Soft and Warm** – Wool carpet adds luxurious underfoot comfort and warmth to a room and acts as an insulator improving heat retention and energy efficiency. Whilst also absorbing sound and cushioning a room against sound reverberation.

**Fire Retardant** – Wool is naturally fire resistant and has a slow ignition rate. Tests show that it is self-extinguishing, meeting many safety regulations without additional treatments. It is favoured in contract locations for this reason.

**Anti-Allergy** – The minute scales on the fibre's surface will hold airborne particles until vacuumed which helps to improve indoor air quality.

**Natural and Sustainable** – Grown on sheep, which graze freely, wool is both 100% natural, fully sustainable and biodegradable.

### Indoor Climate Labelling

All carpets in the NordForm collection carry the Danish Indoor Climate Label, guaranteeing they meet the standards set up by the labelling scheme for the impact of building materials and products on the indoor climate.

For the indoor climate label to be granted, the product must meet certain requirements during its use, including its impact on indoor air quality, the content of chemical substances in the product and which substances are released from the product to the ambient air.

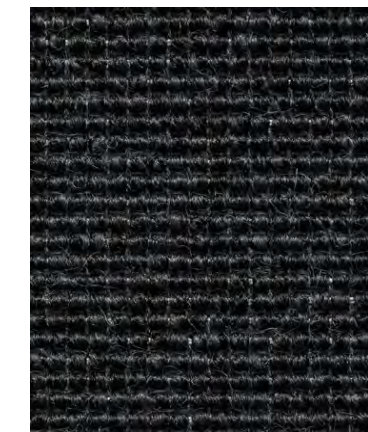
A product certified and labelled under the indoor climate scheme has been subject to extensive testing, and comes with documentation that it does not contain harmful materials or potential allergens.



## ECO WEAVE & TILE



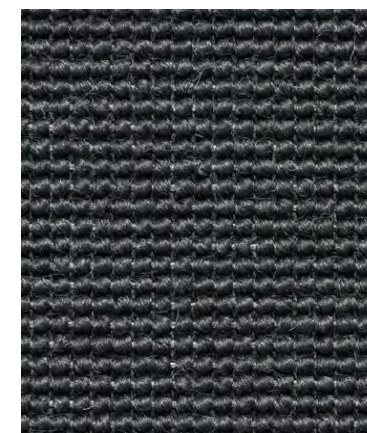
3920 / 3925 078



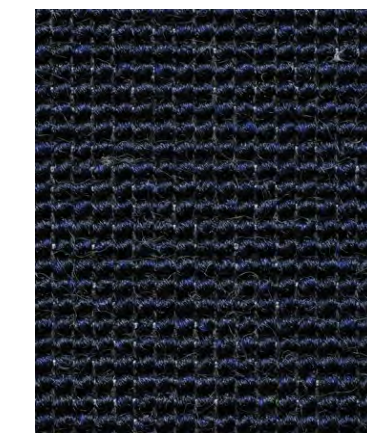
3920 / 3925 076



3920 / 3925 074



3920 / 3925 073



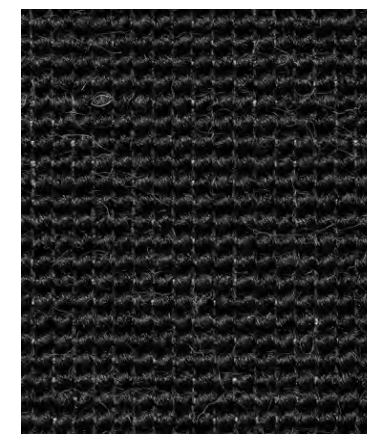
3920 / 3925 086



3920 / 3925 082



3920 / 3925 071



3920 / 3925 057



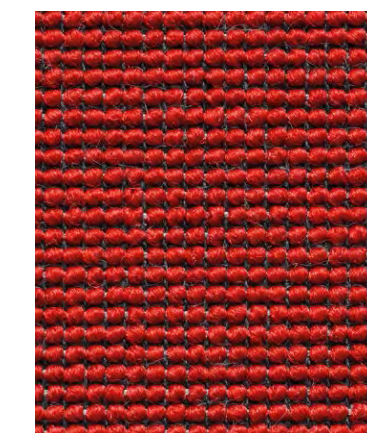
3920 / 3925 028



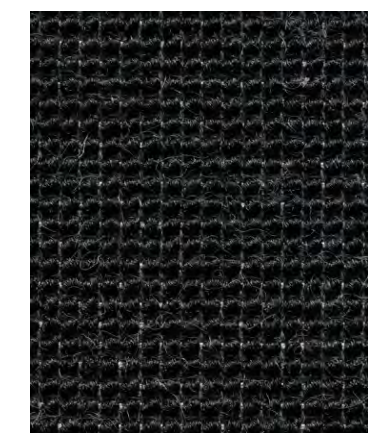
3920 024



3920 / 3925 066



3920 / 3925 090



3920 / 3925 078



CLASSIC



3939 078



3939 072



3939 077



3939 073



3939 074



3939 084



3939 056



3939 055



3939 044



3939 032



3939 024



3939 063



3939 078



NORDFORM

15 Year Wear Warranty

Class 33 Heavy-Use

Soiling & Stain Resistant

Colour and Light Fastness

Colour Trend

Sound Absorption

Sustainable Econyl Fibre

Wool Yarn

Scandinavian Design

Broadloom and Tile

Fire Resistant

Strong and Resilient



3930 078



3930 072



3930 077



3930 073



3930 074



3930 084



3930 056



3930 055



3930 044



3930 032



3930 078



3930 024



3930 063

CLASSIC STRUCTURE



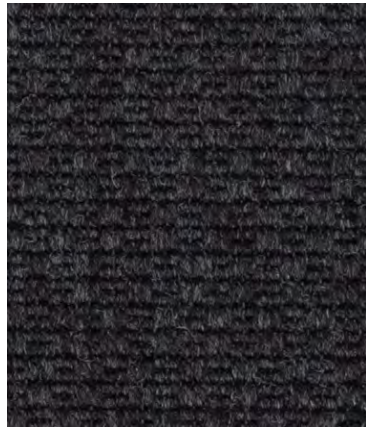
3938 024



3938 032



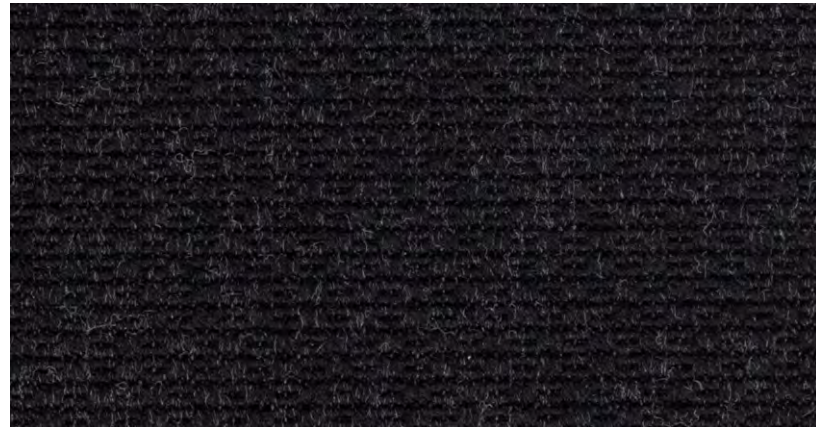
3938 056



3938 072

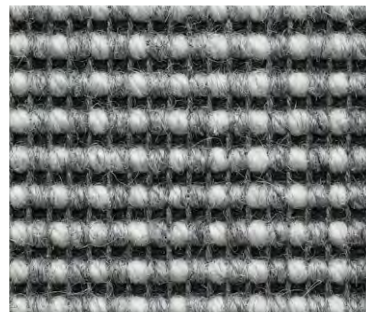


3938 074

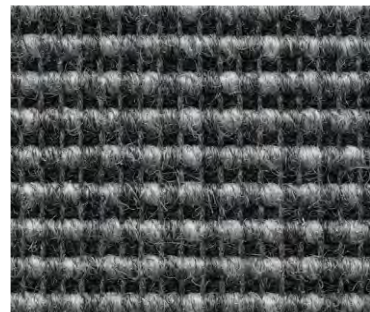


3938 078

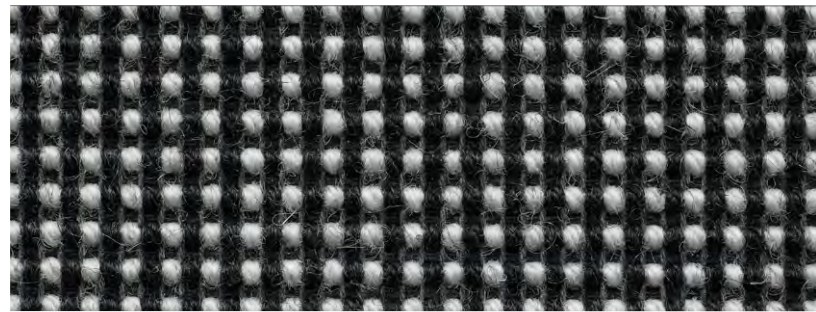
WOOL RIBS



2905 070

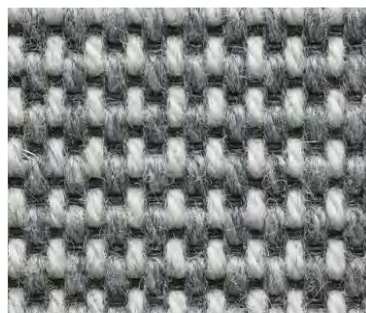


2905 075

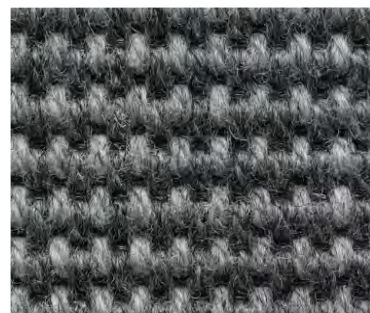


2905 078

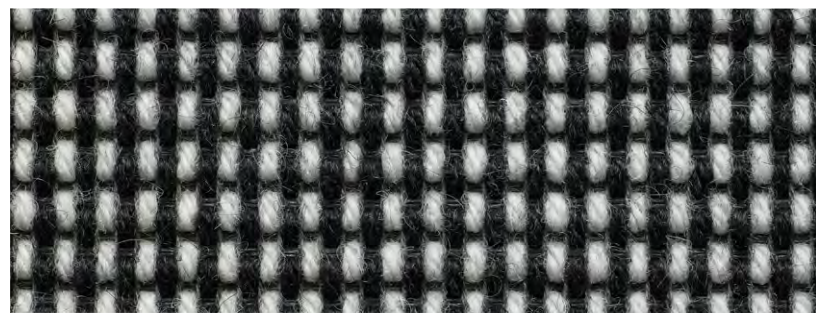
WOOL LINES



2907 070



2907 075



2907 078

NORDFORM

15 Year Wear Warranty

Class 33 Heavy-Use

Soiling & Stain Resistant

Colour and Light Fastness

Colour Trend

Sound Absorption

Sustainable Econyl Fibre

Wool Yarn

Scandinavian Design

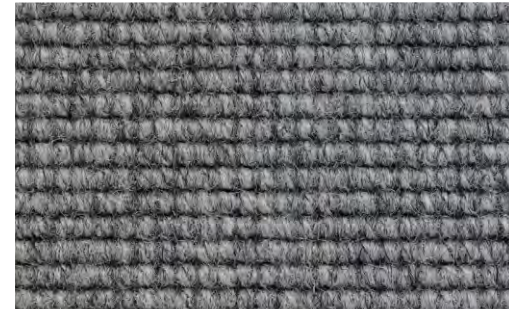
Broadloom and Tile

Fire Resistant

Strong and Resilient



2912 078



2912 074



2912 058

WOOL CLASSIC



2912 077

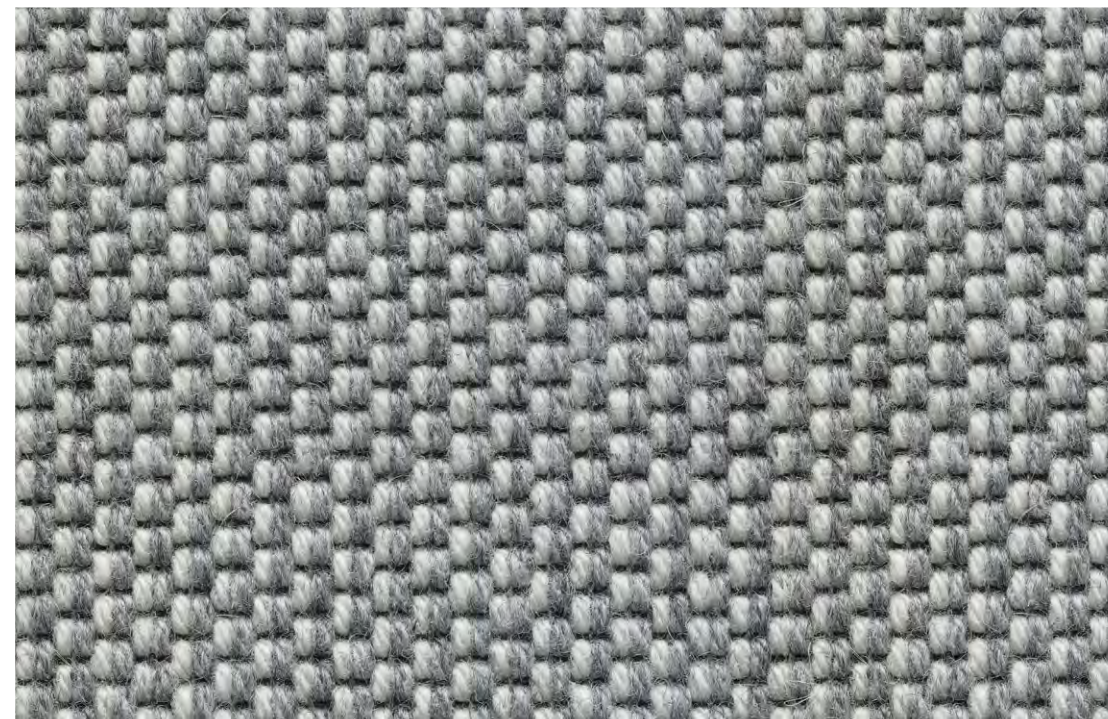


2912 076



2912 078

WOOL SQUARE



2910 070



2910 075

# SPECIFICATIONS



TECHNICAL SPECIFICATION	CLASSIC	CLASSIC XL	CLASSIC STRUCTURE	ECO WEAVE	ECO WEAVE TILE	WOOL CLASSIC	WOOL RIBS WOOL SQUARE WOOL LINES
<b>Design Pattern Identification</b>	3939	3930	3938	3920	3925	2912	2905, 2910, 2907
<b>Method of Manufacture</b>	Flat Woven	Flat Woven	Flat Woven Loop Pile	Flat Woven	Flat Woven	Flat Woven	Flat Woven
<b>Product Width</b>	Rolls, ca. 4.00 Mtr	Rolls, ca. 4.00 Mtr	Rolls, ca. 4.00 Mtr	Rolls, ca. 4.00 Mtr		Rolls, ca. 4.00 Mtr	Rolls, ca. 4.00 Mtr
<b>Roll Length</b>	ca. 25 m	ca. 25 m	ca. 25 m	ca. 25 m		ca. 25 m	ca. 25 m
<b>Pile Material</b>	100% Polyamide Nylon 6.6	100% Polyamide Nylon 6.6	100% Polyamide Nylon 6.6	100% Polyamide Nylon Solution Dyed ECONYL	100% Polyamide Nylon Solution Dyed ECONYL	80% Pure New Wool 20% Polyamide Nylon 6.6	80% Pure New Wool 20% Polyamide Nylon 6.6
<b>Total Weight</b>	Latex KT Bac ca. 2450 g/m <sup>2</sup> Textile TD Bac ca. 2000 g/m <sup>2</sup>	Latex KT Bac ca. 2400 g/m <sup>2</sup> Textile TD Bac ca. 1900 g/m <sup>2</sup>	Latex KT Bac ca. 2600 g/m <sup>2</sup> Textile TD Bac ca. 1850 g/m <sup>2</sup>	Latex KT Bac ca. 2500 g/m <sup>2</sup> Textile TD Bac ca. 1800 g/m <sup>2</sup>	ca. 4050 g/m <sup>2</sup>	ca. 2400 g/m <sup>2</sup>	ca. 1700 g/m <sup>2</sup>
<b>Pile Weight</b>	ca. 700 g/m <sup>2</sup>	ca. 700 g/m <sup>2</sup>	ca. 700 g/m <sup>2</sup>	ca. 560 g/m <sup>2</sup>	ca. 560 g/m <sup>2</sup>	ca. 675 g/m <sup>2</sup>	ca. 475 g/m <sup>2</sup>
<b>Total Height</b>	Latex KT Bac ca. 4.00mm Textile TD Bac ca. 3.00mm	Latex KT Bac ca. 4.00mm Textile TD Bac ca. 3.00mm	Latex KT Bac ca. 4.00mm Textile TD Bac ca. 3.00mm	Latex KT Bac ca. 4.00mm Textile TD Bac ca. 3.00mm	ca. 5.00 mm	ca. 5.00 mm	ca. 5.00 mm
<b>Pile Height</b>	ca. 2.00 mm	ca. 2.00 mm	ca. 2.00 mm	ca. 2.00 mm	ca. 2.00 mm	ca. 3.00 mm	ca. 3.00 mm
<b>Tuft Density</b>	ca. 136,000 m <sup>2</sup>	ca. 136,000 m <sup>2</sup>	ca. 136,000 m <sup>2</sup>	ca. 160,000 m <sup>2</sup>	ca. 160,000 m <sup>2</sup>	ca. 130,000 m <sup>2</sup>	ca. 120,000 m <sup>2</sup>
<b>Tile Size</b>					500 x 500 mm		
<b>Tile Pr. Box</b>					24		
<b>Special Treatment</b>	Scotchgard	Scotchgard	Scotchgard				
<b>Backing</b>	Latex KT Bac/Textile TD Bac	Latex KT Bac/Textile TD Bac	Latex KT Bac/Textile TD Bac	Latex KT Bac/Textile TD Bac	Bitumen	Textile TD Bac	Textile TD Bac
<b>PERFORMANCE TEST</b>							
<b>Wear Classification</b> EN1307	33 – Commercial Use – Heavy	33 – Commercial Use – Heavy	33 – Commercial Use – Heavy	33 – Commercial Use – Heavy	33 – Commercial Use – Heavy	32 – Commercial Use - General	32 – Commercial Use – General
<b>Castor Chair Suitability</b>	A – Continuous Use	A – Continuous Use	A – Continuous Use	A – Continuous Use	A – Continuous Use	B – Occasional Use	B – Occasional Use
<b>Burn Classification</b> EN 13501-1	Cfl-s1	Cfl-s1	Cfl-s1	Cfl-s1	Cfl-s1	Cfl-s1	Cfl-s1
<b>Electrostatic Properties</b> BS ISO 6356	≤ 2 KV @ 25% RH	≤ 2 KV @ 25% RH	≤ 2 KV @ 25% RH	≤ 2 KV @ 25% RH	≤ 2 KV @ 25% RH	≤ 2 KV @ 25% RH	≤ 2 KV @ 25% RH
<b>Thermal Resistance</b> ISO 8302	Latex KT Bac ca. 0.07 m <sup>2</sup> K/W Textile TD Bac ca. 0.05 m <sup>2</sup> K/W	Latex KT Bac ca. 0.07 m <sup>2</sup> K/W Textile TD Bac ca. 0.05 m <sup>2</sup> K/W	Latex KT Bac ca. 0.07 m <sup>2</sup> K/W Textile TD Bac ca. 0.05 m <sup>2</sup> K/W	ca. 0.08 m <sup>2</sup> K/W	ca. 0.08 m <sup>2</sup> K/W	ca. 0.08 m <sup>2</sup> K/W	ca. 0.08 m <sup>2</sup> K/W
<b>Reduction of Transmitted Impact Noise</b> BS EN ISO 140-8	ca. 17/18 dB	ca. 17/18 dB	ca. 17/18 dB	ca. 16 dB	ca. 16 dB	ca. 17 dB	ca. 17 dB
<b>Colourfast</b> Light (1 - 8 Scale)	5	5	5	5	5	4	4
<b>Luxury Rating</b>	LC1	LC1	LC1	LC1	LC1	LC1	LC1

## Tolerances

Product specifications are derived from averages in yarn, fibre, temperature and colour which may vary within the standard industry tolerances. Performance is not affected by such variations.

## Installation

Eco Tile should be fitted with a quarter-turn, otherwise know as tessellated, where tiles are turned and laid out at 90 degrees to one another.

## Care & Maintenance

Please visit [www.danfloor.co.uk/installation-maintenance](http://www.danfloor.co.uk/installation-maintenance) for information on cleaning and maintenance.

**danfloor**  
An Ulster Group Company

**danfloor Uk Ltd**  
106 Longmead Road, Emerald Park, Emersons Green  
Bristol BS16 7FG, United Kingdom  
T: 0333 014 3132, F: 0333 014 3134  
E: [info@danfloor.co.uk](mailto:info@danfloor.co.uk)

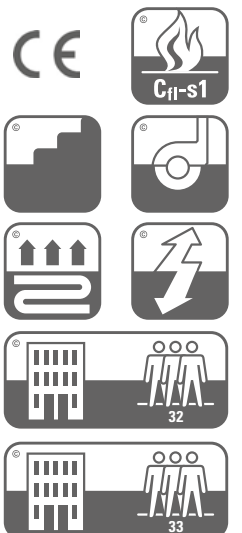
**Danfloor Denmark**  
danfloor a/s, Østerbro 9, DK-6933 Kibæk  
T: +45 9699 1900, F: +45 9699 1999

Innovative Carpet Solutions

**ECONYL®**

**WOOLMIX**

**SCOTCHGARD™**  
THE PROTECTANT



[www.danfloor.co.uk](http://www.danfloor.co.uk)