

Smoke Ventilation Rooflight

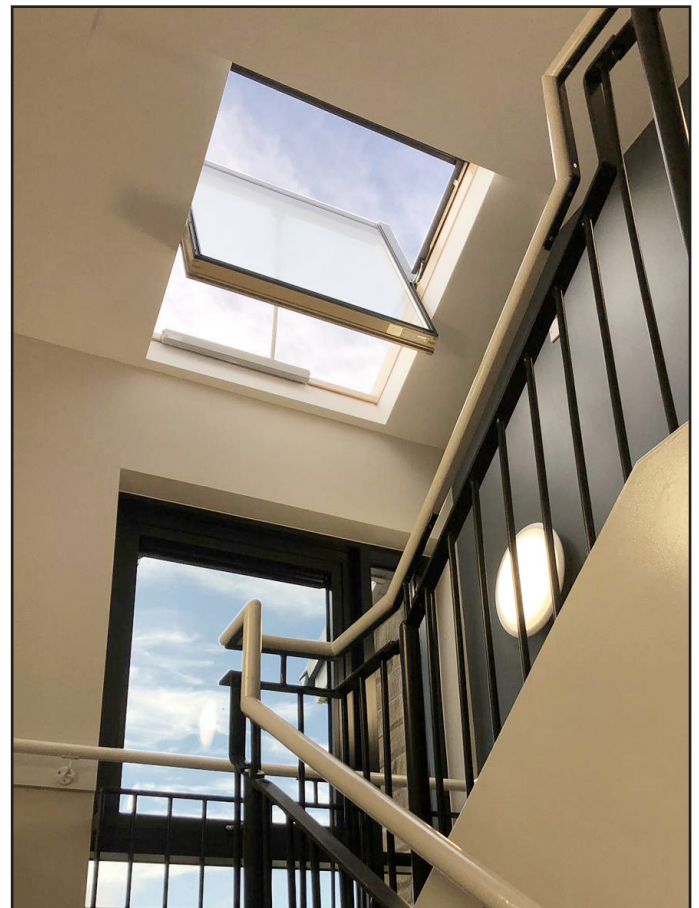
EN certified rooflight

The centre pivot window has a dark grey exterior with natural or white polyurethane interior. The smoke ventilation window is equipped with a 24v D+H chain drive fitted at the base of the window.

- EN 12101-2 certified
- Opening within 60 seconds
- Multiple sizes and Conservation option available
- Dual purpose, smoke and natural ventilation

In case of fire, the rooflight will open automatically (as part of the smoke ventilation system), drawing the smoke up and out. This will keep escape routes free for evacuation and provide clear access for the emergency services.

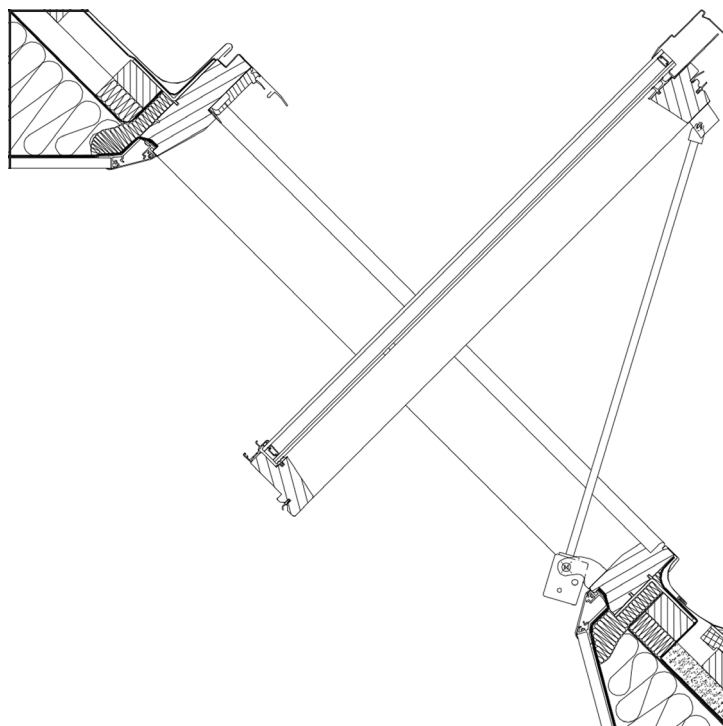
The rooflight can also be used for natural day-to-day ventilation. This can be done as part of an automatic system using a rain sensor and thermostat, and/or manually with a wall switch.



Smoke Ventilation Rooflight

Product cross section example

Staircases: 1140 x 1180 (1m² Geometric Free Area).
Corridors: 1340 x 1400 (1.5m² Geometric Free Area).
A wide range of alternative sizes are available.



Technical data - standard sizes

Geometric Free Area	1m ²	1.5m ²
Certification	EN 12101-2	EN 12101-2
Aerodynamic free area (Aa)	0.71m ²	1.01m ²
Reliability class (Re)	1000	1000
Wind load class (WL)	3000 N/m ²	3000 N/m ²
Snow load class (SL)	1775 N/m ²	1500 N/m ²
Resistance to heat	B300 (300 °C)	B300 (300 °C)
Low ambient temperature rating (T)	-15°C	-15°C
Maximum opening angle	90°	90°
Opening time	<60 seconds	<60 seconds
Voltage	24v	24v
Current consumption	1.4 amp	1.4 amp
Cable	2.5m silicone	2.5m silicone

Email Dyer at enquiry@dyerenvironmental.co.uk for more information.