

Door Holders and Door Stops



Catalogue: TEK_0102

KWS Door Holders and Door Stops

Contents

Information

Introduction Page 3

KWS Door Holders

General Information Page 4

Product Overview Page 6

KWS Door Holders Page 10

KWS Gate Holders Page 58

KWS Door Stops

General Information Page 65

Product Overview Page 68

KWS Door Stops Page 70

Accessories

General Information Page 94

Accessories Page 95

Appendix

Numbers chart Page 102

Finishes chart Page 103





Door Holders and Door Stops

KWS door holders hold your door open safely. No matter whether you are ventilating, cleaning, or transporting something, or simply want to keep the door open for your visitors and customers.

For this purpose you can choose from a multitude of types, sizes, throws and materials on offer. On pages 6-9 you will find an overview of all types.

KWS door stops protect your walls and furniture, for example preventing the door hitting the kitchen shelf for the umpteenth time or the door handle leaving its mark on the wall.

There are door stops for many different fields of application and in four materials: aluminium, stainless steel, steel and brass. You can learn more about the door stop types, applications, and the correct mounting from Page 65 onward.

Technical notes

Holders are available in different operation modes, construction types, and materials. The most important holder types can be differentiated by their operation mode, you distinguish between foot and hands-free operation.

Door holders that are operated by foot or hand.



1033..

foot operation



1010..

with hook



1060..

kick down



1048..

foot operation

Door holders with hands-free operation – by pushing and pulling the door.



1002..

with magnet



1013..

with catch



1055..

with ball tension catch



1064..

push/pull clip type

The different fields of application:

In order to narrow down the fields of application we give you an idea of the maximum door weights on the product pages under the headline "Application".

This information is to be considered as a rough guide in order to illustrate the different degrees of sturdiness of door holders. For individual cases the local conditions also play a significant role (floor condition, wind, etc.). On the following page we will demonstrate some special cases.

Special cases:

In some cases there are particular situations that render the use of a normal door holder impossible. For these cases we provide some solutions and are also grateful for any further ideas from our customers.

Case 1

Between door and floor there is a gap of more than 20 mm:

KWS door holders (for foot operation) come with varying throws up to 120 mm, and other door holders can be shimmed so that the gap between floor and bottom door edge is offset.

Case 2

Slippery floors and high wind pressure on open door.

The door holders **1036.. 1037.. 1038.. 1039..** as well as **1040..** up to **1042..** are pushed into a floor-mounted socket and thus hold the door safely open independent of the floor condition or the wind force.

Case 3

Door opens over a step:

The type **1048..** has a throw of up to 250 mm and a very sturdy design. Thus the height of a step can be overcome and the door held open.

Case 4

Frameless glass door:

By means of a glass clamp you can mount the door holders **1113.. 1132..** and **1133..** on an all glass door without boring holes into the door.

Case 5

Barrier-free living:

Here the use of door holders with hands-free operation are most recommendable. These models make it possible to arrest a door, but only at a fixed point where the counterpart is mounted (e. g. magnet in the floor). You are more flexible with the door holder **1048..** which is pushed down by hand because with this one you can arrest the door at any point.

Case 6

Heavy-duty gates:

The type **1043..** is probably the biggest available door holder and is used for arresting very heavy gates. Please note that this type is 445 mm high and weighs 1.9 kg.

**Things to be taken into account when mounting door and gate holders:**

Door holders should be mounted on the far edge on the door leaf to have the optimum effect. There is a type for casting in (e. g. **1009..** with anchor bolt) which is especially recommendable for outdoors.

Also please note the relevant product-related recommendations for mounting.



Page 10



Page 11



Page 12



Page 13



Page 14



Page 15



Page 16



Page 17



Page 17



Page 18



Page 19



Page 20



Page 21



Page 22



Page 23



Page 24



Page 25



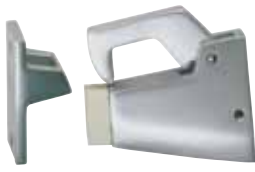
Page 26



Page 27



Page 28



Page 28



Page 29



Page 30



Page 31



Page 31



Page 32



Page 33



Page 34



Page 35



Page 36



Page 37



Page 38



Page 38



Page 39



Page 40



Page 40



Page 41



Page 42



Page 43



Page 44

KWS Door Holders



Page 45



Page 46



Page 47



Page 48



Page 50



Page 51



Page 51



Page 52



Page 52



Page 53



Page 53



Page 54



Page 54



Page 55



Page 55



Page 56



Page 56



Page 57



Page 58



Page 59



Page 60



Page 60



Page 61



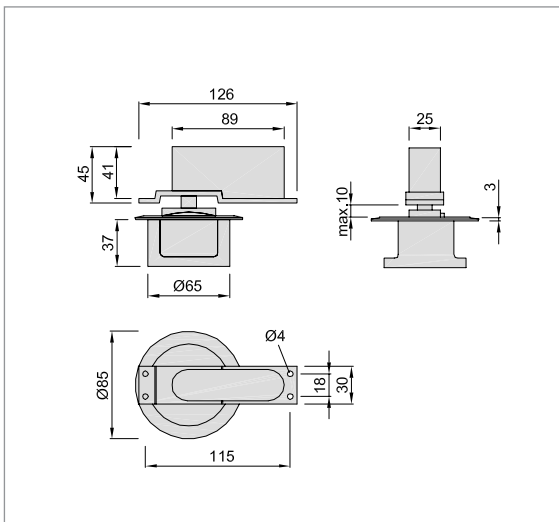
Page 61



Page 62



Page 62



1002..

with permanent magnet,
top part for flush mounting

housing of top part in aluminium

bottom part of aluminium with
stainless steel cover plate

for trip-free areas

Standard design

aluminium machined according to E 6

KWS 1 silver, anodised **.41**

unit 1 piece

Piece weight

aluminium 0.820 kg

Application

max. door weight approx. 60 kg

holding force 65 N

Operation

The door is opened beyond the magnet part flush-mounted in the floor. The magnet attracts the steel plate mounted in the door and the door is held. When the door is to be closed again, it is pulled from the magnet.

Mounting

The keep plate half is mounted into the bottom of the door, at the furthest point possible from the hinge side. It is fixed with the four screws provided.

The floor part is flush-mounted into the floor at the desired hold open point. Once the grouting component has hardened, the cover plate is replaced. The distance between the stainless steel plate of the top part and the floor part must not be more than 10 mm.

Order example

Piece	Part no.	Finish no.
... Piece	1002	..41



Standard design

aluminium machined according to E 5

KWS 1 silver anodised	.31
KWS 2 nickel silver anodised	.32
KWS 3 gold anodised	.33
KWS 5 dark bronze anodised	.37
coloured plastic-coated	.70
unit	1 piece

Piece weight

aluminium	0.920 kg
-----------	----------

Application

max. door weight approx.	60 kg
holding force	65 N

Operation

The door is opened beyond the magnet part which is mounted into the floor. The magnet attracts the steel plate mounted on the door part and the door is held in position. When the door is to be closed again, it is pulled from the magnet.

Mounting

The top part is mounted on the door with four screws with the furthest point possible from the door hinge, the floor part is flush-mounted into the floor at the desired arresting point. Once the grouting component has hardened the cover plate is replaced. The distance between the drawn-in steel plate of the top part and the floor part must not be more than 10 mm.

Order example

Piece	Part no.	Finish no.	DIN
... Piece	1004	.31	R

1004..

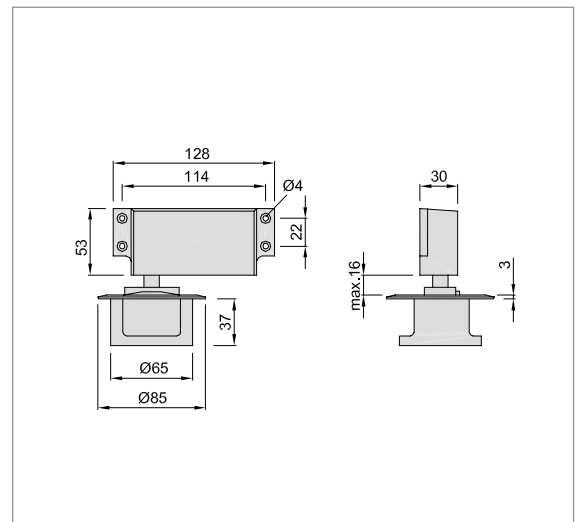
with permanent magnet, top part for screwing on

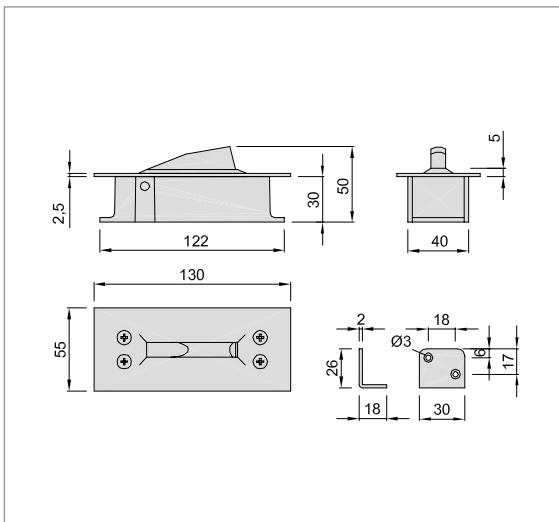
housing of top part of aluminium

bottom part of aluminium with stainless steel cover plate

for trip-free areas

Note:
When ordering DIN right or DIN left is to be indicated. Fig. depicts door holder for DIN right door.





1005..

for doors with closing device
flush-mount box of aluminium,
cover plate stainless steel,
guiding peg of plastic



Standard design

stainless steel	
brushed	.82
polished	.83
unit	2 pieces

Piece weight

stainless steel	0.340 kg
-----------------	----------

Application

max. door weight approx.	80 kg
--------------------------	-------

precondition: door closer

Operation

The door is opened beyond the spring loaded plastic guiding peg. The door is held in place against the peg by the closing action of the overhead closer. Kicking down the guiding peg releases the door again. The provided angle bracket is fixed to the door and serves as edge protection for wood doors and prevents the abrasion of the guiding peg in case of metal doors.

Mounting

Flush-mount the floor box at the arresting point which is to have the greatest possible distance to the door hinge. The cover plate is screwed back on again after grouting the floor hole.

Order example

Piece	Part no.	Finish no.
... Piece	1005	.82



Standard design

stainless steel

brushed	.82
polished	.83

unit	2 pieces
------	----------

Piece weight

stainless steel	0.370 kg
-----------------	----------

Application

max. door weight approx.	60 kg
--------------------------	-------

1006..

with spring-loaded end stop for 8 - 13 mm door thickness

flush-mount box of aluminium, cover plate stainless steel, guiding peg of plastic

rubber black

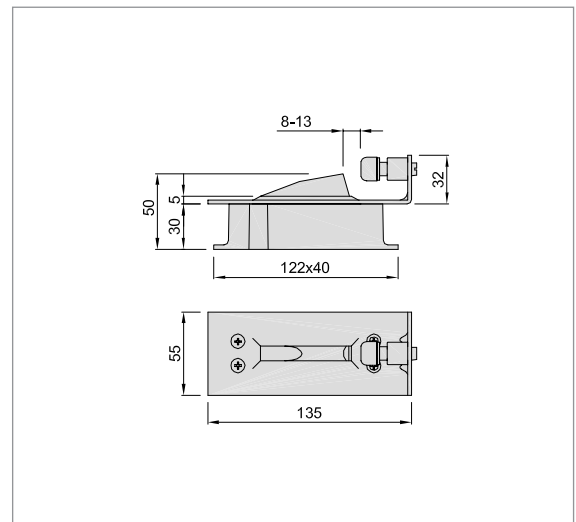


Operation

The door is moved beyond the spring-loaded plastic guiding peg to the end stop. The peg then springs back and holds the door open. Kicking down the guiding peg releases the door again.

Mounting

Flush-mount the floor box at the arresting point which is at the greatest possible distance from the hinge edge. The cover plate is screwed back on again after grouting the floor hole.



Order example

Piece	Part no.	Finish no.
... Piece	1006	.83



1013..

with fixing material

1014..

without fixing material

housing and floor block of aluminium or brass, other metal parts of steel zinc-plated, catch of plastic, buffer of rubber, black

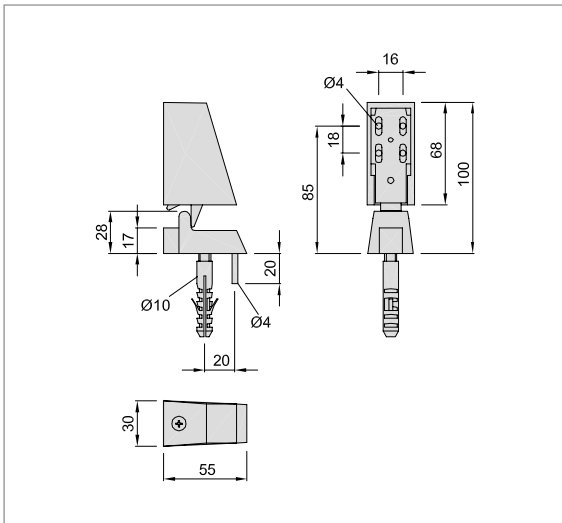
For height compensation we recommend the additional use of shim **1555..** (5 mm) or **1556..** (10 mm).

Operation

By simply pushing or pulling the door from the stop the door is held or released. In case of subsequent lifting or sagging doors the door holder can be readjusted simply .

Mounting

The door holder mechanism is mounted on the door with four screws at the greatest possible distance from the door hinge, the holder housing is put on and secured with a screw. The floor block is screwed on the floor at the corresponding position. An additional pin inserted in the floor prevents the floor block from turning. Fitting instructions and boring template are enclosed with each unit package.

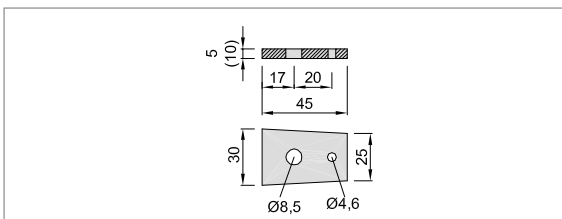


1555..

shim 5 mm high

1556..

shim 10 mm high



Standard design

aluminium	
silver stove enamelled	.02
black stove enamelled	.03
dark brown stove enamelled	.10
coloured plastic-coated	.70

aluminium machined according to E 5

KWS 1 silver anodised	.31
KWS 2 nickel silver anodised	.32
KWS 3 gold anodised	.33
brushed stainless steel effect anodised	.35
KWS 5 dark bronze anodised	.37

brass

brushed and lacquered	.62
nickel plated	.63
polished and lacquered	.66

unit	1 piece
------	---------

Piece weight

aluminium	0.240 kg
brass	0.460 kg

Application

max. door weight approx.	50 kg
holding force	100 N

Standard design

see **1013.. 1014..**

unit	1 piece
------	---------

Piece weight

aluminium	0.015 kg
brass	0.045 kg

Order example

Piece	Part no.	Finish no.
... Piece	1013	.03

Standard design

aluminium	
coloured plastic-coated	.70

aluminium machined according to E 5

KWS 1 silver anodised	.31
KWS 2 nickel silver anodised	.32
KWS 3 gold anodised	.33
brushed stainless steel effect anodised	.35
KWS 5 dark bronze anodised	.37

brass

brushed and lacquered	.62
nickel plated	.63
polished and lacquered	.66

unit	1 piece
------	---------

Piece weight

aluminium	0.530 kg
brass	0.690 kg

Application

max. door weight approx.	50 kg
holding force	80 N

1113..

with fixing material

1114..

without fixing material

with clamp fixing for all glass doors (8 - 10 mm)

housing and floor block of aluminium or brass, clamp fixing stainless steel, matching colour or brass, other metal parts of steel. zinc-plated, catch of plastic, buffer of rubber, black

For height compensation we recommend the additional use of shim **1555..** (5 mm) or **1556..** (10 mm).

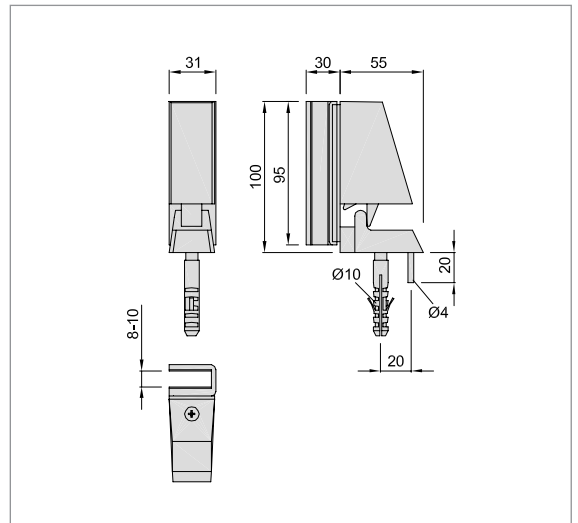


Operation

By simply pushing or pulling the door from the stop the door is held or released. In case of subsequent lifting or sagging doors the door holder can be readjusted in a simple manner.

Mounting

Put clamp on the door and screw it tight, screw door holder mechanism on the clamp, put on door holder housing and secure it with a screw. Screw the floor block on the floor at the corresponding position. An additional pin inserted in the floor prevents the floor block from turning. For fixing the door holder no bore holes in the glass are necessary. Mounting instructions are enclosed with each unit package.



Standard design

see **1113.. 1114..**

unit	1 piece
------	---------

Piece weight

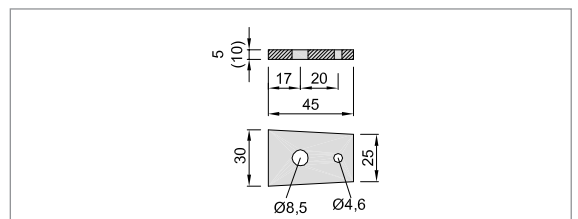
aluminium	0.015 kg
brass	0.045 kg

1555..

shim 5 mm high

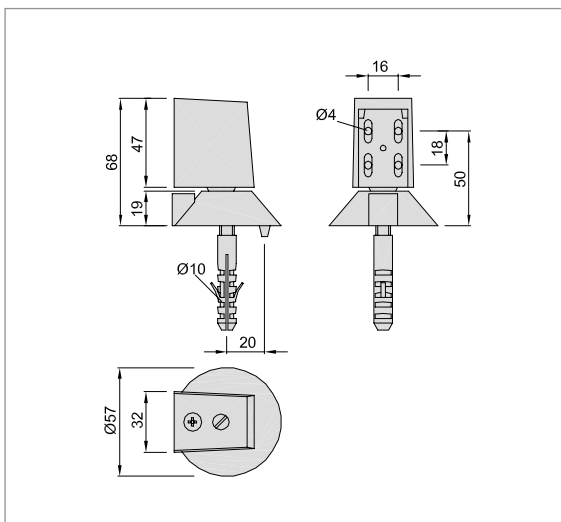
1556..

shim 10 mm high



Order example

Piece	Part no.	Finish no.
... Piece	1113	.63



1023..

with fixing material

1090..

without fixing material

housing of top part and floor block of aluminium or brass, other metal parts of steel, zinc-plated, buffer of rubber, black

Operation

By simply pushing or pulling the door is held or released. The door holder can be readjusted in a simple manner in case of subsequent lifting or sagging doors. By means of an adjusting screw the ball pressure can be adjusted.

Mounting

The door holder mechanism is mounted on the door with four screws at the greatest possible distance from the door hinge, the holder housing is put on and secured with a screw. The floor block is screwed on the floor at the corresponding position. An additional pin inserted in the floor prevents the floor block from turning.

Standard design

aluminium	
silver stove enamelled	.02
black stove enamelled	.03
dark brown stove enamelled	.10
coloured plastic-coated	.70

aluminium machined according to E 5

KWS 1 silver anodised	.31
KWS 2 nickel silver anodised	.32
KWS 3 gold anodised	.33
KWS 5 dark bronze anodised	.37

brass

brushed and lacquered	.62
nickel plated	.63
polished and lacquered	.66

unit	5 pieces
------	----------

Piece weight

aluminium	0.200 kg
brass	0.340 kg

Application

max. door weight approx.	40 kg
--------------------------	-------

Order example

Piece	Part no.	Finish no.
... Piece	1023	.10

Standard design

stainless steel

brushed	.82
polished	.83

unit	5 pieces
------	----------

Piece weight

stainless steel	0.210 kg
-----------------	----------

Application

max. door weight approx.	40 kg
--------------------------	-------

1019..

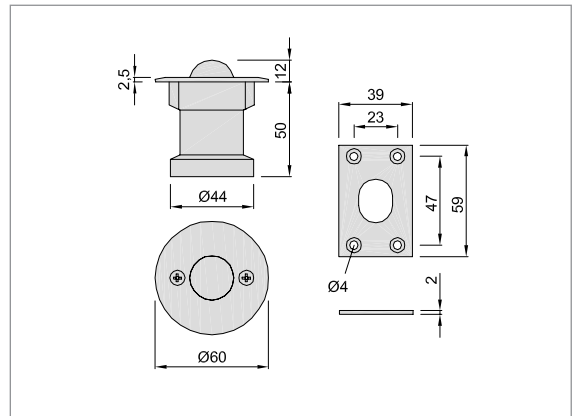
floor socket of aluminium with cover plate stainless steel, counter plate of steel, zinc-plated

Operation

Move the door over the flush-mounted door holder until the ball catches. When the door is to be closed, just pull it from the ball.

Mounting

Flush-mount the floor socket at the arresting point at the greatest possible distance from the door hinge, screw back on the cover plate and fix the counter plate at the corresponding position on the door.



Standard design

aluminium machined according to E 5

KWS 1 silver anodised	.31
KWS 2 nickel silver anodised	.32
KWS 3 gold anodised	.33
brushed stainless steel effect anodised	.35
KWS 5 dark bronze anodised	.37

unit	4 pieces
------	----------

Piece weight

aluminium	0.320 kg
-----------	----------

Application

max. door weight approx.	40 kg
--------------------------	-------

1020..

with end stop

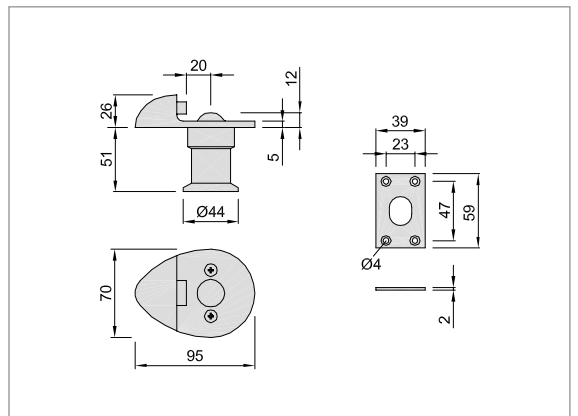
of aluminium with counter plate of steel, zinc-plated, buffer of rubber, black

Operation

Move the door over the flush-mounted door holder to the end stop until the ball catches. When the door is to be closed, just pull it from the ball.

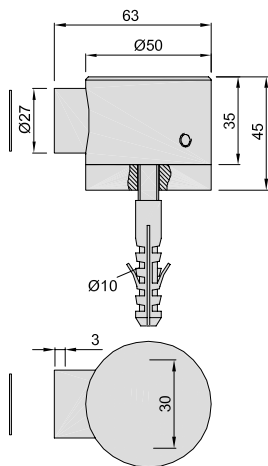
Mounting

Flush-mount the floor socket at the arresting point at the greatest possible distance from the door hinge, screw back on the cover plate and fix the counter plate at the corresponding position on the door.



Order example

Piece	Part no.	Finish no.
... Piece	1019	.82



1015..

magnetic holder
with fixing material

1016..

magnetic holder
without fixing material

of aluminium, brass
or stainless steel

grub screws M8x90 of
stainless steel (for **1015**)

counter plate of steel for
screwing on or glueing on

shim (10 mm high) aluminium,
black plastic-coated

Operation

The door is held by pushing it onto the magnet. The magnet is spring-mounted so that the door is cushioned.

Mounting

2 plugs are inserted into the floor at the desired arresting position which should be at the greatest possible distance from the door hinge, the grub screws are screwed in, the door holder put on and fixed with two grub screws on the side.



Standard design

aluminium	
silver stove enamelled	.02
coloured plastic-coated	.70

aluminium machined according to E 5

KWS 1 silver anodised	.31
KWS 2 nickel silver anodised	.32
KWS 3 gold anodised	.33
KWS 5 dark bronze anodised	.37

brass

brushed and lacquered	.62
polished and lacquered	.66

stainless steel

brushed	.82
polished	.83

unit	1 piece
------	---------

Piece weight

aluminium	0.200 kg
brass	0.550 kg
stainless steel	0.500 kg

Application

max. door weight approx.	60 kg
holding force	70 N

Order example

Piece	Part no.	Finish no.
... Piece	1015	.31

**Standard design****aluminium machined according to E 5**

KWS 1 silver anodised .31

brass

polished and lacquered .66

stainless steel

brushed .82

polished .83

unit 1 piece

Piece weight

aluminium 0.170 kg

brass 0.350 kg

stainless steel 0.325 kg

Application

max. door weight approx. 50 kg

holding force approx. 70 N

1018..

wall magnetic holder with fixing material

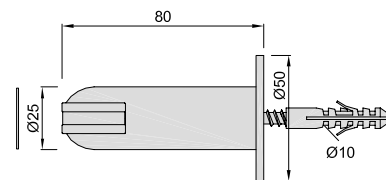
counter plate of steel for screwing on or glueing on

Operation

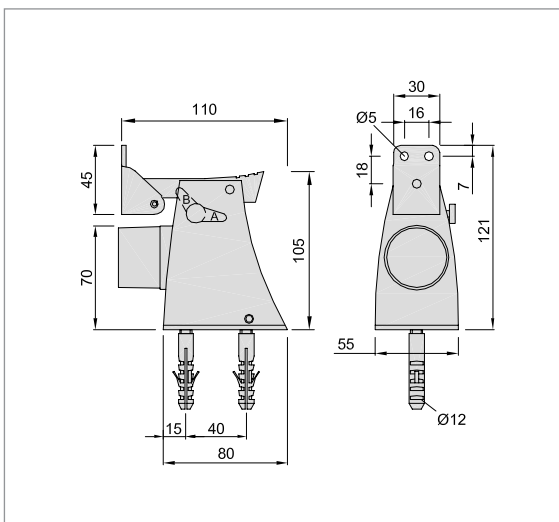
The door is held by pushing it onto the magnet.

Mounting

Screw on the fixing material at the desired position. Put on the magnetic holder and fix it with the clamp screw. Fix the counter plate at the corresponding position.

**Order example**

Piece	Part no.	Finish no.
... Piece	1018	.31



1110..

with fixing material
rubber buffer in black, spring-
loaded

Operation

The door is held open when the keep (door mounted) activates the floor mounted catch. The door is released by manually lifting the catch. Operation of the side lever removes the hold open function, in this function the product acts as a spring loaded stop only.

Mounting

Screw the holder mounting plate on the floor with two screws and inserted plugs at the desired arresting point which should be the greatest possible distance from the door hinge. Then put on the holder and fix it with the two screws on the side onto the base plate. The roller block is fixed at the corresponding position on the door.

Standard design

aluminium	
with roller block of steel	
silver stove enamelled	.02
black stove enamelled	.03
dark brown stove enamelled	.10
coloured plastic-coated	.70

aluminium machined according to E 5	
with roller block of stainless steel	
KWS 1 silver anodised	.31
KWS 2 nickel silver anodised	.32
KWS 3 gold anodised	.33
brushed stainless steel effect anodised	.35
KWS 5 dark bronze anodised	.37

unit	1 piece
------	---------

Piece weight	
aluminium	0.600 kg

Application	
max. door weight approx.	120 kg

Order example		
Piece	Part no.	Finish no.
... Piece	1110	.31

Standard design

aluminium

with roller block of steel

silver stove enamelled	.02
black stove enamelled	.03
dark brown stove enamelled	.10
coloured plastic-coated	.70

aluminium machined according to E 5

with roller block of stainless steel

KWS 1 silver anodised	.31
KWS 2 nickel silver anodised	.32
KWS 3 gold anodised	.33
brushed stainless steel effect anodised	.35
KWS 5 dark bronze anodised	.37

brass

with roller block of stainless steel

brushed and lacquered	.62
nickel plated	.63
polished and lacquered	.66

stainless steel

with roller block of stainless steel

brushed	.82
polished	.83

unit	1 piece
------	---------

Piece weight

aluminium	1009..	0.860 kg
	1010..	0.570 kg
brass	1009..	1.320 kg
	1010..	1.030 kg
stainless steel	1009..	1.270 kg
	1010..	1.040 kg

Application

max. door weight approx.	100 kg
--------------------------	--------

Accessories

For height compensation we recommend the additional use of the shim 1610 (20 mm).

Standard design

aluminium

coloured plastic-coated	.70
black	RAL 9011

unit	1 piece
------	---------

Piece weight

aluminium	0.300 kg
-----------	----------

Order example

Piece	Part no.	Finish no.
... Piece	1010	.02

1009..

with anchor bolt for casting in

1010..

without anchor bolt, for screwing on

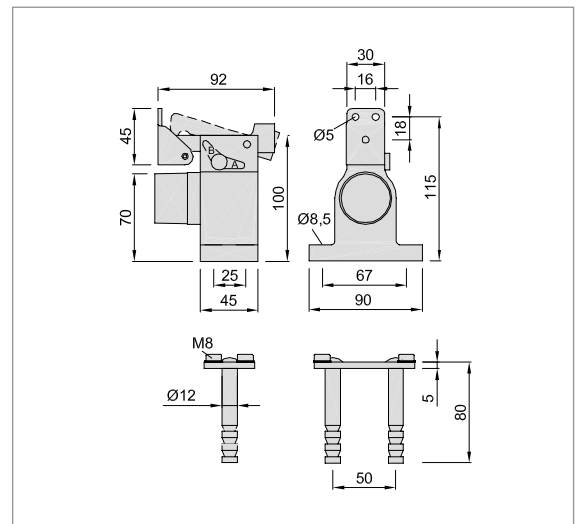
rubber buffer in black, spring-loaded; anchor bolt (for 1009..) hot-dip galvanised or stainless steel.

Operation

To hold the door it is moved towards the door holder until it is caught by the hook. It is released by actuating the hook while pushing the door against the holder at the same time. The disconnecting lever, moved from position A to B (see drawing) deactivates the arresting mode. Thus the door holder only has the function of a spring-loaded stop.

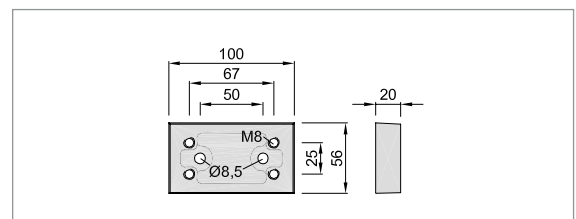
Mounting

With anchor bolt: Put the provided anchor bolt in the floor and grout it at the desired arresting point which should be the greatest possible distance from the door hinge. After the grouting material has hardened, screw the door holder on and fix the roller block at the corresponding position on the door. Without anchor bolt: Screw the holder with four screws and plugs which are to be inserted into the floor, at the desired position which should be the greatest possible distance from the door hinge and fix the roller block on the door at the corresponding position.



1610..

shim 20 mm high





Standard design

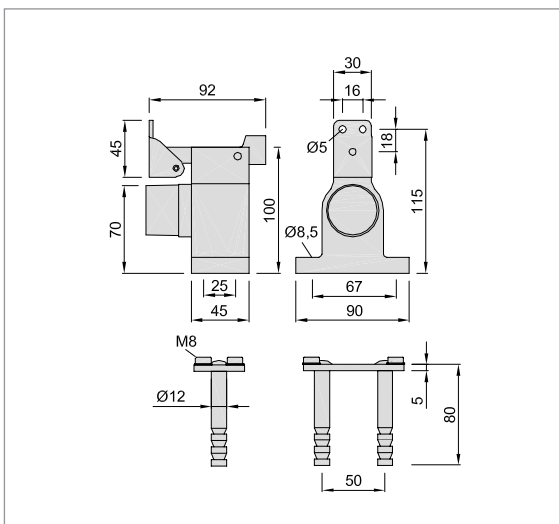
aluminium	
with roller block of steel	
silver stove enamelled	.02
black stove enamelled	.03
dark brown stove enamelled	.10
coloured plastic-coated	.70

aluminium machined according to E 5	
with roller block of stainless steel	
KWS 1 silver anodised	.31
KWS 2 nickel silver anodised	.32
KWS 3 gold anodised	.33
brushed stainless steel effect anodised	.35
KWS 5 dark bronze anodised	.37

unit	1 piece
------	---------

Piece weight		
aluminium	1051..	0.840 kg
	1052..	0.550 kg

Application	
max. door weight approx.	100 kg



1051..
with anchor bolt for casting in

1052..
without anchor bolt, for screwing on
rubber buffer in black, spring-loaded, anchor bolt hot-dip galvanised

Accessories
For height compensation we recommend the additional use of the shim **1610** (20 mm).

Operation
For holding the door it is moved towards the door holder until it is caught by the hook, it is released by actuating the hook while pushing the door against the holder at the same time.

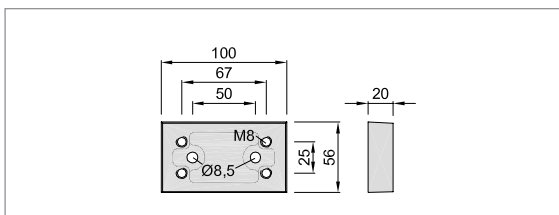
Mounting
With anchor bolt: Put the provided anchor bolt in the floor and grout it at the desired arresting point which should be the greatest possible distance from the door hinge. After the grouting material has hardened, screw the door holder on and fix the roller block at the corresponding position on the door.
Without anchor bolt: Screw the holder with four screws and the plugs on the floor at the desired position which should be the greatest possible distance from the door hinge and fix the roller block on the door at the corresponding position.



1610..
shim 20 mm high

Standard design	
aluminium	
coloured plastic-coated	.70
black	RAL 9011
unit	1 piece

Piece weight	
aluminium	0.300 kg



Order example		
Piece	Part no.	Finish no.
... Piece	1051	.03

Standard design

aluminium

with roller block of steel

silver stove enamelled	.02
black stove enamelled	.03
dark brown stove enamelled	.10
coloured plastic-coated	.70

aluminium machined according to E 5

with roller block of stainless steel

KWS 1 silver anodised	.31
KWS 2 nickel silver anodised	.32
KWS 3 gold anodised	.33
brushed stainless steel effect anodised	.35
KWS 5 dark bronze anodised	.37

unit	1 piece
------	---------

Piece weight

aluminium	1091..	0.870 kg
	1092..	0.580 kg

Application

max. door weight approx.	100 kg
--------------------------	--------

Mounting

With anchor bolt: Put in the provided anchor bolt in the floor and grout it at the desired arresting point which should be the greatest possible distance from the door hinge. After the grouting material has hardened, screw the door holder on and fix the roller block at the corresponding position on the door.

Without anchor bolt: Screw the holder with four screws and the plugs on the floor in the desired position which should be the greatest possible distance from the door hinge and fix the roller block on the door at the corresponding position.

Accessories

For height compensation we recommend the additional use of the shim **1610** (20 mm).

Standard design

aluminium

coloured plastic-coated	.70
black	RAL 9011

unit	1 piece
------	---------

Piece weight

aluminium	0.300 kg
-----------	----------

Order example

Piece	Part no.	Finish no.
... Piece	1092	.32

1091..

with anchor bolt for casting in

1092..

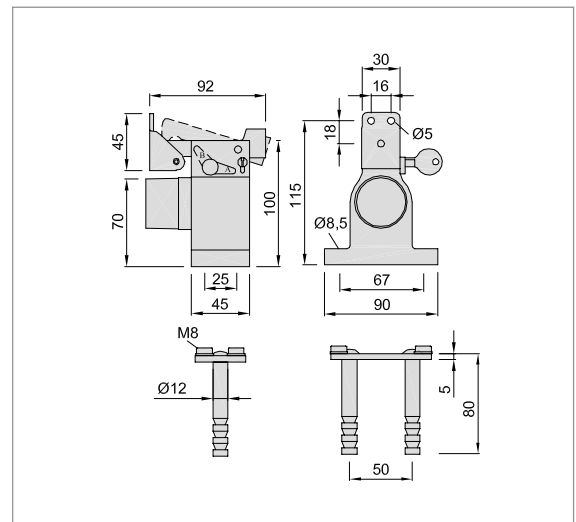
without anchor bolt, for screwing on

with locking device

rubber buffer in black, spring-loaded, anchor bolt hot-dip galvanised

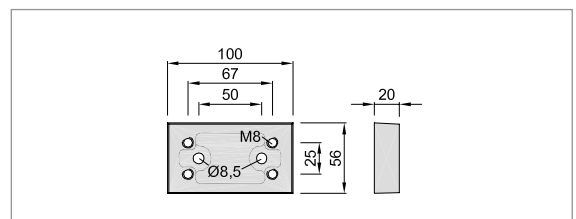
Operation

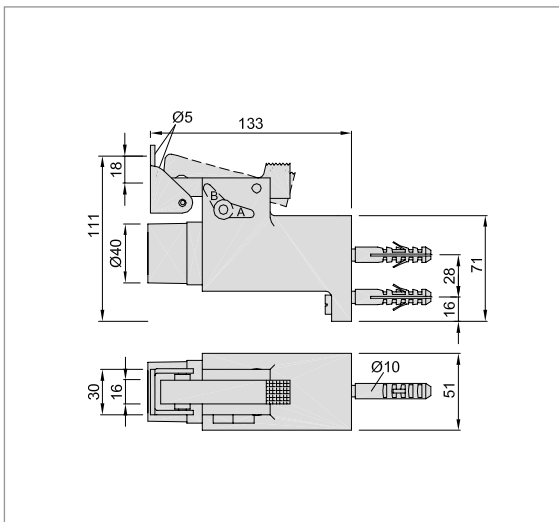
For holding the door it is moved towards the door holder until it is caught by the hook, it is released by actuating the hook while pushing the door against the holder at the same time. The disconnecting lever, moved from position A to B (see drawing) deactivates the holding mode. Thus the door holder only has the function of a spring-loaded stop. The locking device has the effect that the hook on the door holder cannot be operated and thus it is not possible to close a door which is held open. The scope of supply includes two keys.



1610..

shim 20 mm high





1011..

with fixing material

1012..

without fixing material

rubber buffer in black, spring-loaded

Standard design

aluminium	
with roller block of steel	
silver stove enamelled	.02
black stove enamelled	.03
dark brown stove enamelled	.10
coloured plastic-coated	.70

aluminium machined according to E 5	
with roller block of stainless steel	
KWS 1 silver anodised	.31
KWS 2 nickel silver anodised	.32
KWS 3 gold anodised	.33
brushed stainless steel effect anodised	.35
KWS 5 dark bronze anodised	.37

unit	1 piece
------	---------

Piece weight		
aluminium	1011..	0.730 kg
	1012..	0.690 kg

Application	
max. door weight approx.	60 kg

Operation

For holding the door it is moved towards the door holder until it is caught by the hook, it is released by actuating the hook while pushing the door against the holder at the same time. The disconnecting lever, moved from position A to B (see drawing) deactivates the holding mode. Thus the door holder only has the function of a spring-loaded stop.

Mounting

The mounting plate is screwed with two screws in combination with plugs on the wall at the greatest possible distance from the door hinge, the door holder is put on and fastened with two screws. Screw on the roller block at the corresponding position of the door.

Order example

Piece	Part no.	Finish no.
... Piece	1011	.10

Standard design

aluminium

with roller block of steel

silver stove enamelled	.02
black stove enamelled	.03
dark brown stove enamelled	.10
coloured plastic-coated	.70

aluminium machined according to E 5

with roller block of stainless steel

KWS 1 silver anodised	.31
KWS 2 nickel silver anodised	.32
KWS 3 gold anodised	.33
brushed stainless steel effect anodised	.35
KWS 5 dark bronze anodised	.37

unit	1 piece
------	---------

Piece weight

aluminium	1095..	0.750 kg
	1096..	0.690 kg

Application

max. door weight approx.	100 kg
--------------------------	--------



Operation

For holding the door it is moved towards the door holder until it is caught by the hook, it is released by actuating the hook while pushing the door against the holder at the same time. The disconnecting lever, moved from position A to B (see drawing) deactivates the holding mode. Thus the door holder only has the function of a spring-loaded stop. Holder continuously adjustable to the right and left up to 10°

Mounting

Screw the fixing element with inserted fixture on the wall at the greatest possible distance from the door hinge, put on the holder element, incline it as desired (when opening the door it is to hit the holder at an angle of 90°) and secure it with the threaded bolt. Screw on the roller block at the corresponding position of the door.

1095..

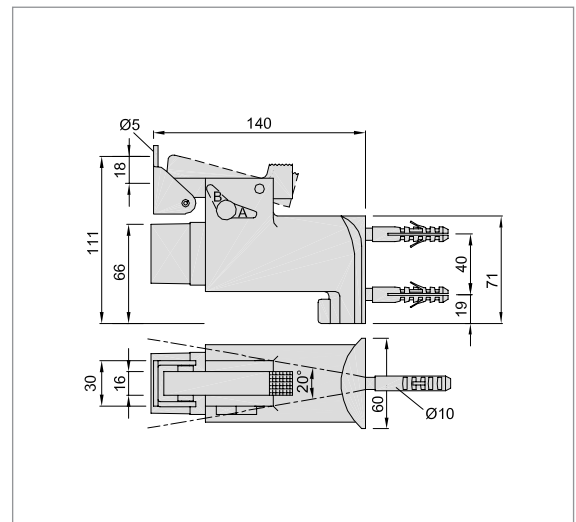
with fixing material

1096..

without fixing material

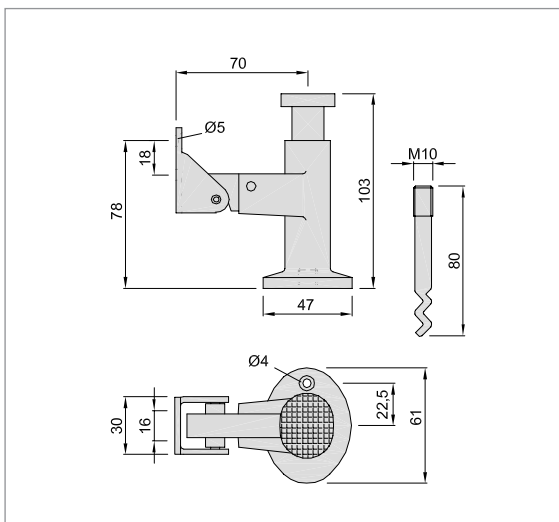
adjustable to the right and left up to 10°

rubber buffer in black, spring-loaded



Order example

Piece	Part no.	Finish no.
... Piece	1095	.02



1047..

with anchor bolt for casting in anchor bolt of steel, hot-dip galvanised

On request also available with stair bolt **9104.06** instead of anchor bolt.

Operation

For holding the door it is moved towards the holder unit the hook catches. For releasing the door it is sufficient to push the button gently while pushing the door against the holder at the same time.

Mounting

The anchor bolt is inserted in the floor at the desired holding point which should be the greatest possible distance from the door hinge. The holder is screwed on the projecting thread of the anchor bolt and secured against turning by means of a screw. At the corresponding position the roller block is fixed on the door.

Standard design

aluminium	
with roller block of steel	
silver stove enamelled	.02
black stove enamelled	.03
dark brown stove enamelled	.10
coloured plastic-coated	.70

aluminium machined according to E 5

with roller block of stainless steel	
KWS 1 silver anodised	.31
KWS 2 nickel silver anodised	.32
KWS 3 gold anodised	.33
KWS 5 dark bronze anodised	.37

unit	1 piece
------	---------

Piece weight

aluminium	0.300 kg
-----------	----------

Application

max. door weight approx.	40 kg
--------------------------	-------

Order example

Piece	Part no.	Finish no.
... Piece	1047	.10

**Standard design****aluminium****with roller block of steel**

silver stove enamelled	.02
black stove enamelled	.03
dark brown stove enamelled	.10
coloured plastic-coated	.70

aluminium machined according to E 5**with roller block of stainless steel**

KWS 1 silver anodised	.31
KWS 2 nickel silver anodised	.32
KWS 3 gold anodised	.33
KWS 5 dark bronze anodised	.37

unit	1 piece
------	---------

Piece weight

aluminium	1049..	0.660 kg
	1050..	0.490 kg

Application

max. door weight approx.	80 kg
--------------------------	-------

1049..

with anchor bolt for casting in

1050

without anchor bolt,
for screwing on

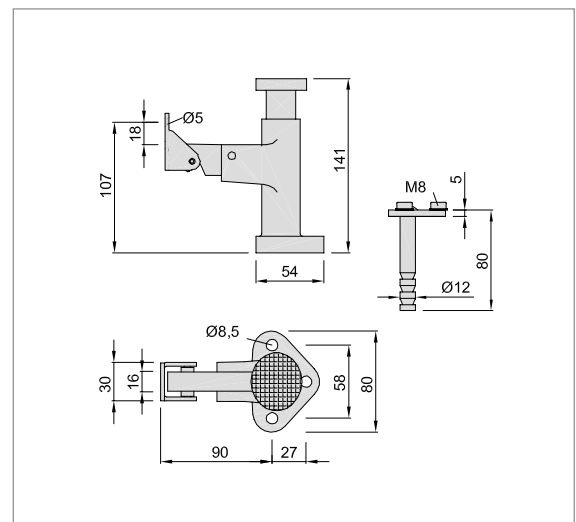
anchor bolt of steel,
hot-dip galvanised

Operation

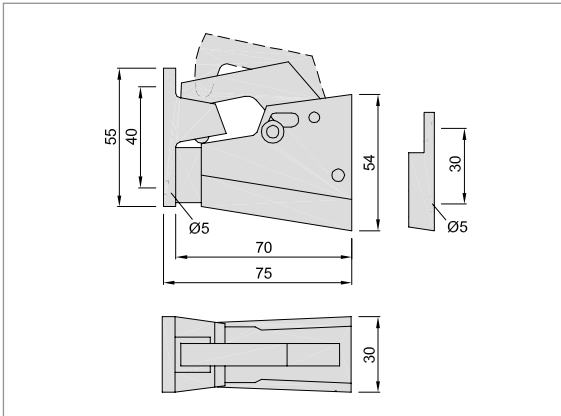
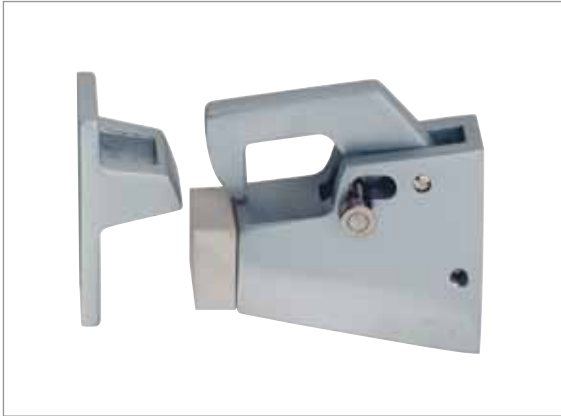
For holding the door it is moved towards the holder unit the hook catches. For releasing the door it is sufficient to push the button gently while pushing the door against the holder at the same time.

Mounting

The holder is fixed on the floor at the desired arresting point which should be the greatest possible distance from the door hinge in combination with an anchor bolt (for **1049..**) or with plugs (for **1050..**). At the corresponding position the roller block is fixed on the door.

**Order example**

Piece	Part no.	Finish no.
... Piece	1049	.02



1061..

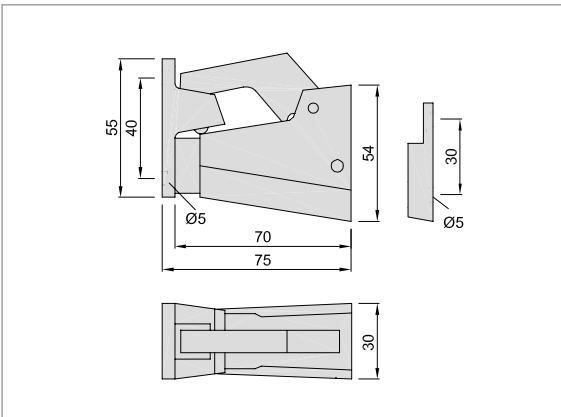
with hook
Option to deactivate the holding mode

of aluminium or brass
buffer of rubber, white

Operation
For holding the door it is pushed against the holder until the hook catches the eye. By lifting the hook the door is released again. The Operation of the hook can be deactivated. In that case the holder only serves as a door stop.

Mounting
The eye is screwed on the wall at the greatest possible distance from the door hinge. At the corresponding position the fixing element of the holder is fastened on the wall, the holder put on and secured with a clamp screw.

Standard design	
aluminium	
silver stove enamelled	.02
black stove enamelled	.03
dark brown stove enamelled	.10
coloured plastic-coated	.70
aluminium machined according to E 5	
KWS 1 silver anodised	.31
KWS 2 nickel silver anodised	.32
KWS 3 gold anodised	.33
KWS 5 dark bronze anodised	.37
brass	
brushed and lacquered	.62
polished and lacquered	.66
unit	5 pieces
Piece weight	
aluminium	0.150 kg
brass	0.390 kg
Application	
max. door weight approx.	50 kg



1062..

with hook
of aluminium or brass
buffer of rubber, white

Operation
For holding the door it is pushed against the holder until the hook catches the eye. By lifting the hook the door is released again.

Mounting
The eye is screwed on the wall at the greatest possible distance from the door hinge. At the corresponding position the fixing element of the holder is fastened on the wall, the holder put on and secured with a clamp screw.

Standard design	
aluminium	
silver stove enamelled	.02
black stove enamelled	.03
dark brown stove enamelled	.10
coloured plastic-coated	.70
aluminium machined according to E 5	
KWS 1 silver anodised	.31
KWS 2 nickel silver anodised	.32
KWS 3 gold anodised	.33
KWS 5 dark bronze anodised	.37
brass	
brushed and lacquered	.62
polished and lacquered	.66
unit	5 pieces
Piece weight	
aluminium	0.140 kg
brass	0.380 kg
Application	
max. door weight approx.	50 kg

Order example		
Piece	Part no.	Finish no.
... Piece	1061	.33

Standard design

steel	
silver stove enamelled	.02
black stove enamelled	.03
electro-galvanised	.06
unit	10 pieces

Piece weight

steel	1073..	0.310 kg
	1173..	0.290 kg

Application

max. door weight approx.	100 kg
--------------------------	--------

1073..

for 80 mm distance

1173..

for 65 mm distance

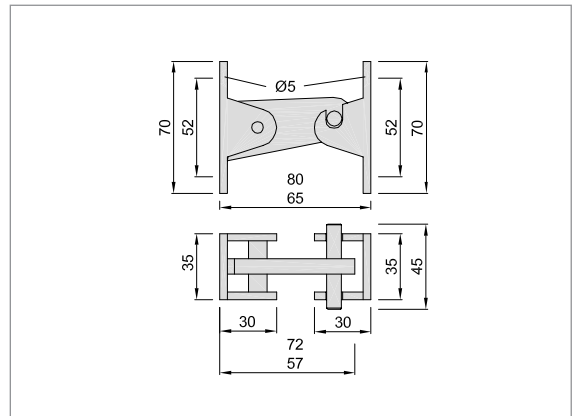
of steel

Operation

For holding the door it is pushed against the holder which is screwed on the wall. Thus the lever snaps into the cut-out of the holding element which is fixed on the door. For releasing the door just lift the lever.

Mounting

The holding element is screwed on the door at the greatest possible distance from the door hinge, the lever is fastened on the wall accordingly.



Order example

Piece	Part no.	Finish no.
... Piece	1073	.06



1058..

with fixing material

1059..

without fixing material

holder of aluminium or brass with buffer of rubber, black (on request available with white rubber)

Operation

Hold open is effected by manually clicking the holding device into a cut-out of the holder bottom part. The holding device is fastened to the door, the bottom part is screwed on the floor. Without operating the door part the floor part only serves as a door stop.

Mounting

The holder floor part is screwed on the floor at the desired arresting point which should be the greatest possible distance from the door hinge. An additional pin inserted in the floor prevents the floor part from turning. The holder door part is screwed on 30 mm from the floor in the area of the floor part to centre screw holes of the door part and a lateral distance of 3 mm from centre screw hole floor part to centre screw hole of the door part.

For height compensation we recommend the additional use of the shims **1557..** (5 mm), **1558..** (10 mm) or **1559..** (15 mm).

Standard design

aluminium	
coloured plastic-coated	.70

aluminium machined according to E 5

KWS 1 silver anodised	.31
KWS 2 nickel silver anodised	.32
KWS 3 gold anodised	.33
KWS 5 dark bronze anodised	.37

brass

brushed and lacquered	.62
polished and lacquered	.66

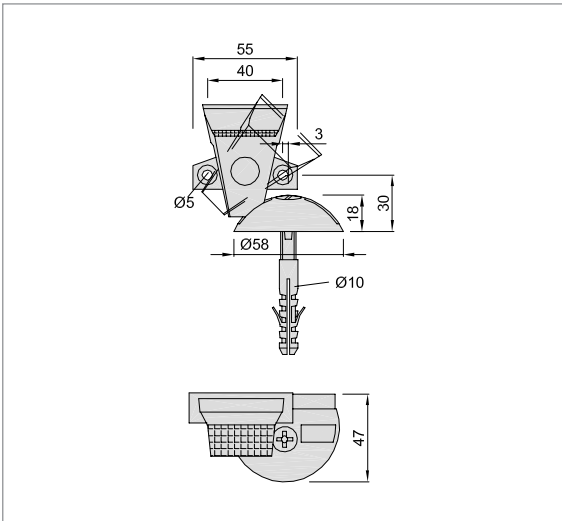
unit	5 pieces
------	----------

Piece weight

aluminium	0.140 kg
brass	0.330 kg

Application

max. door weight approx.	50 kg
--------------------------	-------



1557..

shim 5 mm high

1558..

shim 10 mm high

1559..

shim 15 mm high

Standard design

see **1058.. 1059..**

unit	20 pieces
------	-----------

Piece weight

aluminium	1557..	0.018 kg
	1558..	0.031 kg
	1559..	0.040 kg
brass	1557..	0.034 kg
	1558..	0.053 kg
	1559..	0.068 kg

Order example

Piece	Part no.	Finish no.
... Piece	1058	.32

Standard design

aluminium	
silver stove enamelled	.02
black stove enamelled	.03
dark brown stove enamelled	.10
coloured plastic-coated	.70

aluminium machined according to E 5

KWS 1 silver anodised	.31
KWS 2 nickel silver anodised	.32
KWS 3 gold anodised	.33
KWS 5 dark bronze anodised	.37

unit	8 pieces
------	----------

Piece weight

aluminium	0.130 kg
-----------	----------

Application

max. door weight approx.	50 kg
--------------------------	-------

1060..

for doors with closing device
buffer of rubber, black

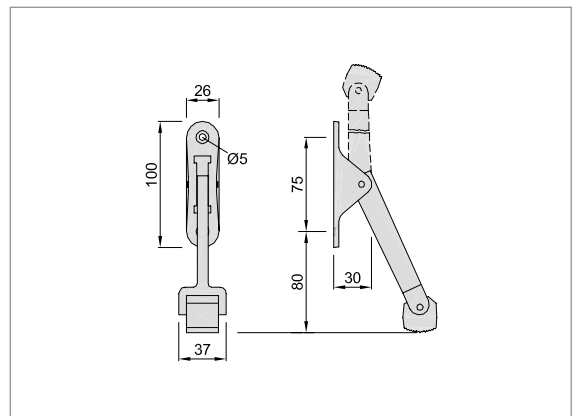
Operation

The door can be held open at any opening angle. The lowered drop arm prevents the closing of the door by the closing device. Release is effected by simply raising the drop arm which is then held by a flat spring.

Mounting

The fixing of the door holder is effected by two screws at the greatest possible distance from the door hinge on the door side facing the closing direction. The distance between floor and the centre of the bottom screw hole has to be 80 mm.

A regular light greasing of the flat spring prevents abrasion on the drop arm.



Standard design

steel	
silver stove enamelled	.02
black stove enamelled	.03
dark brown stove enamelled	.10

unit	10 pieces
------	-----------

Piece weight

steel	0.130 kg
-------	----------

Application

max. door weight approx.	50 kg
--------------------------	-------

1076..

for doors with closing device
wedge foot of plastic, grey

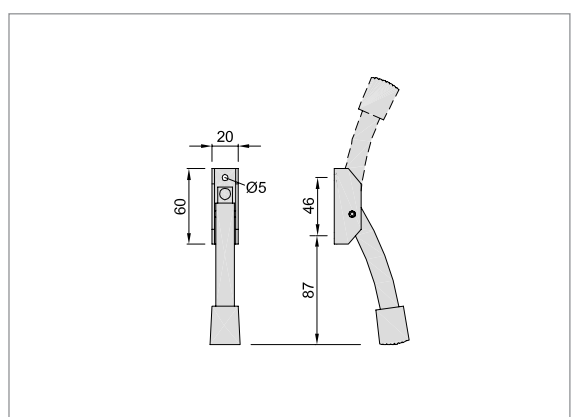
Operation

The door can be held open at any opening angle. The drop down lever prevents the closing of the door effected by the closing device. Release is effected by simply raising the drop arm which is then held by a flat spring.

Mounting

The fixing of the door holder is effected by two screws at the greatest possible distance from the door hinge on the door side facing the closing direction. The distance between floor and the centre of the bottom screw hole has to be 87 mm.

A regular light greasing of the flat spring prevents abrasion at the drop arm.



Order example

Piece	Part no.	Finish no.
... Piece	1076	.03

1024..

25 mm throw
 foot of plastic, grey



Standard design

steel	
bolt zinc-plated	
silver stove enamelled	.02
black stove enamelled	.03
dark brown stove enamelled	.10
coloured plastic-coated	.70

brass	
bolt brass	
brushed and lacquered	.62
polished and lacquered	.66

stainless steel	
bolt stainless steel	
brushed	.82
polished	.83

unit	1 piece
------	---------

Piece weight	
steel	0.100 kg
brass	0.100 kg
stainless steel	0.100 kg

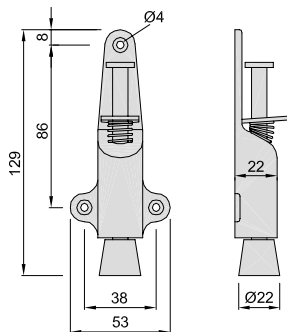
Application	
max. door weight approx.	25 kg

Operation

The door can be held open at any opening angle. For this the bolt is pushed down until the foot sticks on the floor. For releasing the door a gentle push on the check plate suffices.

Mounting

The door holder is screwed on the door at the greatest possible distance from the door hinge. The distance from bottom edge of door to foot is to be 5 - 10 mm.



Order example

Piece	Part no.	Finish no.
... Piece	1024	.02

Standard design**aluminium****bolt stainless steel**coloured plastic-coated **.70****aluminium machined according to E 5****bolt stainless steel**KWS 1 silver anodised **.31**KWS 2 nickel silver anodised **.32**KWS 3 gold anodised **.33**KWS 5 dark bronze anodised **.37**

unit 1 piece

Piece weight

aluminium 0.110 kg

Application

max. door weight approx. 25 kg

Operation

The door can be held open at any opening angle. For this the bolt is pushed down until the foot sticks on the floor. For releasing the door a gentle push on the check plate suffices.

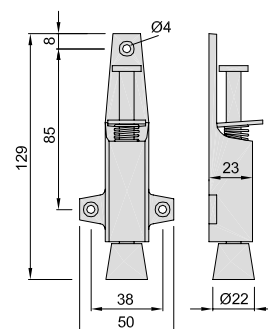
Mounting

The door holder is screwed on the door at the greatest possible distance from the door hinge. The distance from bottom edge of door to foot is to be 5 - 10 mm.

1025..

25 mm throw

foot of plastic, grey

**Order example**

Piece	Part no.	Finish no.
... Piece	1025	.31

Standard design

steel

bolt zinc-plated

silver stove enamelled	.02
black stove enamelled	.03
dark brown stove enamelled	.10
coloured plastic-coated	.70

brass

bolt brass

brushed and lacquered	.62
polished and lacquered	.66

stainless steel

bolt stainless steel

brushed	.82
polished	.83

unit	1 piece
------	---------

Piece weight

steel	0.470 kg
brass	0.480 kg
stainless steel	0.470 kg

Application

max. door weight approx.	100 kg
--------------------------	--------

Operation

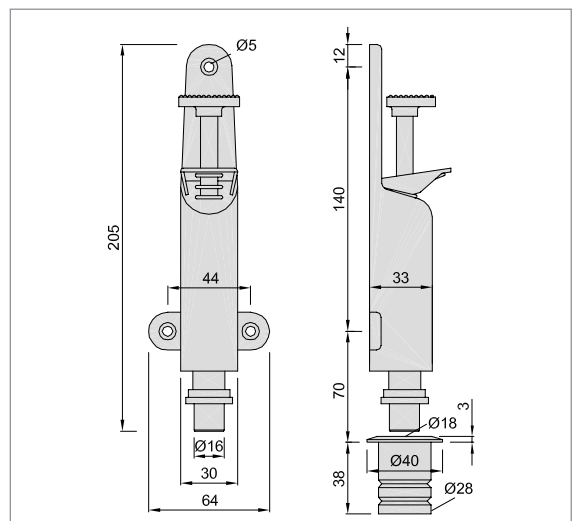
The door is opened up to the flush-mounted socket. By kicking down the bolt the door is held open. For releasing the door a gentle push on the check plate of the holder suffices.

Mounting

The door holder is screwed on the door with three screws at the greatest possible distance from the door hinge (the distance from bottom edge of door to bolt is to be 5 - 10 mm) and the floor socket is inserted into the floor at the desired holding position. Every unit package includes fixing instructions.

1038..

30 mm throw
with floor socket
stainless steel



Order example

Piece	Part no.	Finish no.
... Piece	1038	.83



1027..

30 mm throw
bolt stainless steel

1089..

30 mm throw
bolt zinc-plated

1029..

50 mm throw
bolt stainless steel

1093..

50 mm throw
bolt zinc-plated

housing of aluminium
foot of plastic, grey

Standard design

aluminium only for 1089.. and 1093..

silver stove enamelled	.02
black stove enamelled	.03
dark brown stove enamelled	.10

aluminium

coloured plastic-coated	.70
-------------------------	-----

aluminium machined according to E 5

KWS 1 silver anodised	.31
KWS 2 nickel silver anodised	.32
KWS 3 gold anodised	.33
KWS 5 dark bronze anodised	.37

unit	1 piece
------	---------

Piece weight

aluminium	1027..	1089..	0.290 kg
	1029..	1093..	0.310 kg

Application

max. door weight approx.	40 kg
--------------------------	-------

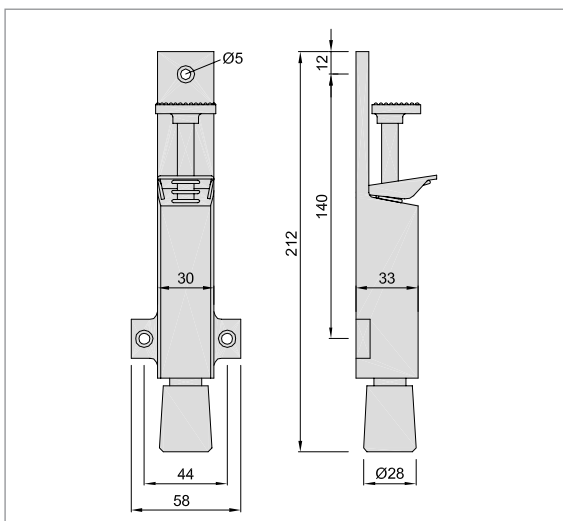
Operation

The door can be held open at any opening angle. For this the bolt is pushed down until the foot sticks on the floor. For releasing the door a gentle push on the check plate suffices.

Mounting

The door holder is screwed on the door at the greatest possible distance from the door hinge. The distance from bottom edge of door to foot is to be 5 - 10 mm.

The default hub spring increases the contact pressure on the floor.



Order example

Piece	Part no.	Finish no.
... Piece	1027	.31

Standard design

aluminium

bolt stainless steel

coloured plastic-coated .70

aluminium machined according to E 5

bolt stainless steel

KWS 1 silver anodised .31

KWS 2 nickel silver anodised .32

KWS 3 gold anodised .33

KWS 5 dark bronze anodised .37

unit 1 piece

Piece weight

aluminium 0.440 kg

Application

max. door weight approx. 100 kg

Operation

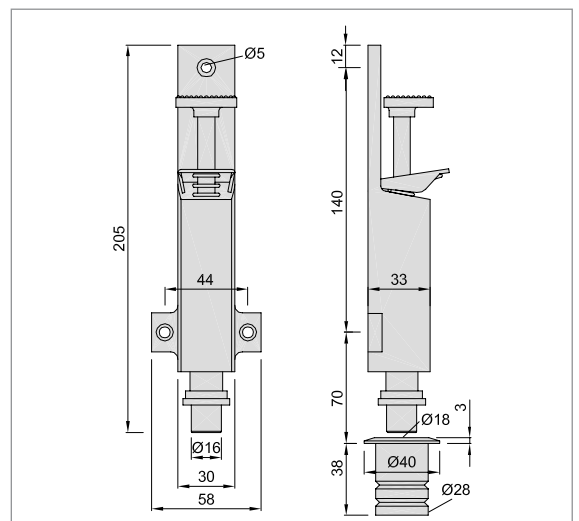
The door is opened up to the flush-mounted socket. By kicking down the bolt the door is held open. For releasing the door a gentle push on the check plate of the holder suffices.

Mounting

The door holder is screwed on the door with three screws at the greatest possible distance from the door hinge (the distance from bottom edge of door to bolt is to be 5 - 10 mm) and the floor socket is inserted into the floor at the desired holding position. Every unit package includes fixing instructions.

1039..

30 mm throw
with floor socket
stainless steel
housing of lightmetal



Order example

Piece	Part no.	Finish no.
... Piece	1039	.31



1032..

30 mm throw

1034..

50 mm throw

foot of plastic, grey



Standard design

steel	
bolt zinc-plated	
silver stove enamelled	.02
black stove enamelled	.03
dark brown stove enamelled	.10
coloured plastic-coated	.70

brass	
bolt brass	
brushed and lacquered	.62
polished and lacquered	.66

stainless steel	
bolt stainless steel	
brushed	.82
polished	.83

unit	1 piece
------	---------

Piece weight		
steel	1032..	0.340 kg
	1034..	0.360 kg
brass	1032.	0.350 kg
	1034..	0.370 kg
stainless steel	1032..	0.340 kg
	1034..	0.360 kg

Application	
max. door weight approx.	40 kg

Operation
The door can be held open at any opening angle. For this the bolt is pushed down until the foot sticks on the floor. For releasing the door a gentle push on the check plate suffices.

Mounting
The door holder is screwed on the door with three screws in combination with a mounting plate at the greatest possible distance from the door hinge. The distance from bottom edge of door to foot is to be 5 - 10 mm. Every unit package includes fixing instructions and boring template.

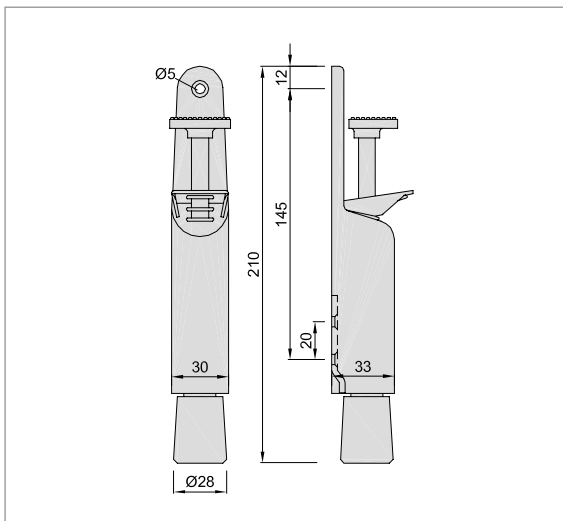
The default hub spring increases the contact pressure on the floor.



1030..

30 mm throw

like **1032..** but with anti tamper security fixing



Order example		
Piece	Part no.	Finish no.
... Piece	1032	.82

Standard design**steel****bolt zinc-plated**

silver stove enamelled	.02
black stove enamelled	.03
dark brown stove enamelled	.10
coloured plastic-coated	.70

brass**bolt brass**

brushed and lacquered	.62
polished and lacquered	.66

stainless steel**bolt stainless steel**

brushed	.82
polished	.83

unit	1 piece
------	---------

Piece weight

steel	0.490 kg
brass	0.500 kg
stainless steel	0.490 kg

Application

max. door weight approx.	100 kg
--------------------------	--------

Operation

The door is opened up to the flush-mounted socket. By kicking down the bolt the door is held open. For releasing the door a gentle push on the check plate of the holder suffices.

Mounting

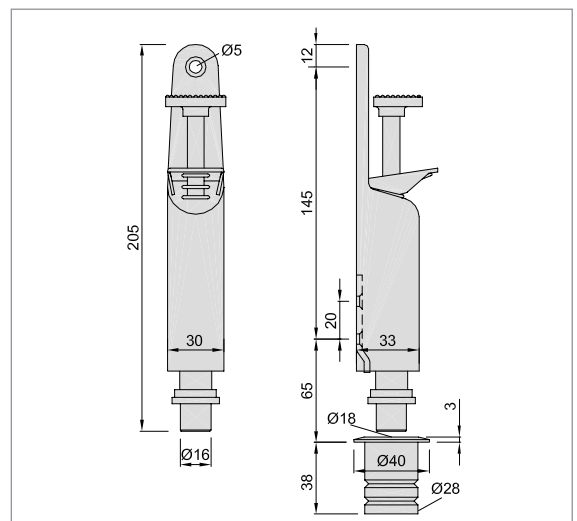
The door holder is screwed on the door with three screws in combination with a mounting plate at the greatest possible distance from the door hinge (the distance from bottom edge of door to bolt is to be 5 - 10 mm) and the floor socket is inserted into the floor at the desired arresting position. Every unit package includes fixing instructions and boring template.

1036..

30 mm throw

with floor socket

stainless steel

**Order example**

Piece	Part no.	Finish no.
... Piece	1036	.83



1033..

30 mm throw
bolt stainless steel

1081..

30 mm throw
bolt steel zinc-plated

1035..

50 mm throw
bolt stainless steel

1082..

50 mm throw
bolt steel zinc-plated

housing of aluminium
foot of plastic, grey

Standard design

aluminium only for 1081.. and 1082..

silver stove enamelled	.02
black stove enamelled	.03
dark brown stove enamelled	.10

aluminium

coloured plastic-coated	.70
-------------------------	-----

aluminium machined according to E 5

KWS 1 silver anodised	.31
KWS 2 nickel silver anodised	.32
KWS 3 gold anodised	.33
KWS 5 dark bronze anodised	.37

unit	1 piece
------	---------

Piece weight

aluminium	1033.. 1081..	0.320 kg
	1035.. 1082..	0.340 kg

Application

max. door weight approx.	40 kg
--------------------------	-------

Operation

The door can be held open at any opening angle. For this the bolt is pushed down until the foot sticks the floor. For releasing the door a gentle push on the check plate suffices.

Mounting

The door holder is screwed on the door with three screws in combination with a mounting plate at the greatest possible distance from the door hinge. The distance from bottom edge of door to foot is to be 5 - 10 mm. Every unit package includes fixing instructions and boring template.

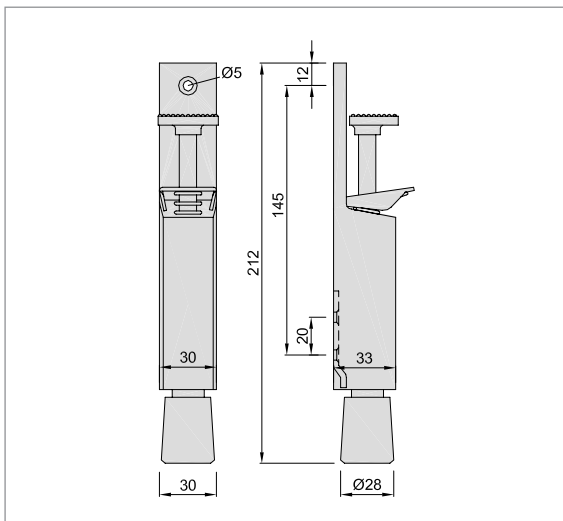
The default hub spring increases the contact pressure on the floor.



1031..

30 mm throw

like 1033.. but with anti tamper security fixing



Order example

Piece	Part no.	Finish no.
... Piece	1033	.31

Standard design

aluminium

bolt stainless steel

coloured plastic-coated .70

aluminium machined according to E 5

bolt stainless steel

KWS 1 silver anodised .31

KWS 2 nickel silver anodised .32

KWS 3 gold anodised .33

KWS 5 dark bronze anodised .37

unit 1 piece

Piece weight

aluminium 0.460 kg

Application

max. door weight approx. 100 kg

Operation

The door is opened up to the flush-mounted socket. By kicking down the bolt the door is held open. For releasing the door a gentle push on the check plate of the holder suffices.

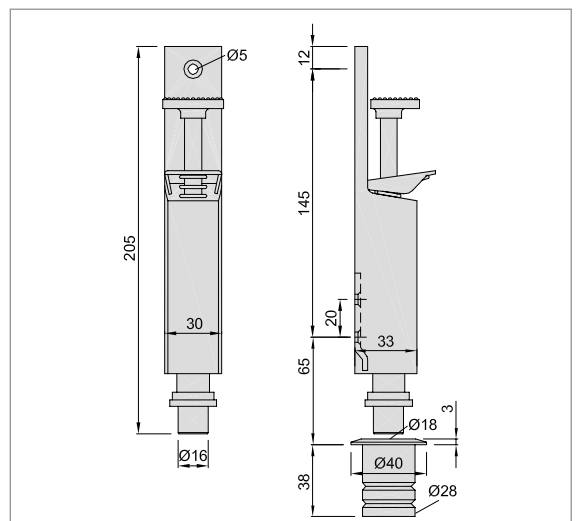
Mounting

The door holder is screwed on the door with three screws in combination with a mounting plate at the greatest possible distance from the door hinge (the distance from bottom edge of door to bolt is to be 5 - 10 mm) and the floor socket is inserted into the floor at the desired arresting position. Every unit package includes fixing instructions and boring template.

1037..

30 mm throw

with floor socket
stainless steel



Order example

Piece	Part no.	Finish no.
... Piece	1037	.32



1132..

30 mm throw

with clamp for all glass doors (8 - 10 mm)

housing, bolt and clamp of brass, other metal parts of stainless steel

housing, bolt and clamp of brass and other metal parts of stainless steel

foot of plastic, grey



Standard design

brass	
bolt brass	
brushed and lacquered	.62
polished and lacquered	.66
stainless steel	
bolt stainless steel	
brushed	.82
polished	.83
unit	1 piece
Piece weight	
brass	0.820 kg
stainless steel	0.790 kg
Application	
max. door weight approx.	40 kg

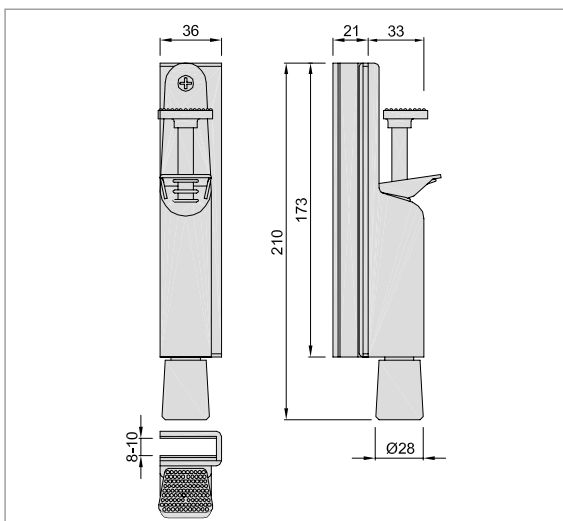
Operation

The door can be held open at any opening angle. For this the bolt is pushed down until the foot sticks on the floor. For releasing the door a gentle push on the check plate suffices. **Suitable for right and left.**

Mounting

Put the clamp on the door and screw it tight, screw the mounting plate of the holder on the clamp, put on the door holder and secure it with a screw. The distance from bottom edge of door to foot is to be 5 - 10 mm. For fixing the door holder there are no bore holes necessary in the glass. Mounting instructions are enclosed with each unit package.

The default hub spring increases the contact pressure on the floor.



Order example

Piece	Part no.	Finish no.
... Piece	1132	.62

Standard design

aluminium

bolt stainless steel

coloured plastic-coated .70

aluminium machined according to E 5

bolt stainless steel

KWS 1 silver anodised .31

KWS 2 nickel silver anodised .32

KWS 3 gold anodised .33

KWS 5 dark bronze anodised .37

unit 1 piece

Piece weight

aluminium 0.800 kg

Application

max. door weight approx. 40 kg

Operation

The door can be held open at any opening angle. For this the bolt is pushed down until the foot sticks on the floor. For releasing the door a gentle push on the check plate suffices.

Usable for right and left.

Mounting

Put clamp on the door and screw it tight, screw the mounting plate of the holder on the clamp, put on door holder and secure it with a screw. The distance from bottom edge of door to foot is to be 5 - 10 mm. For fixing the door holder there are no bore holes necessary in the glass. Mounting instructions are enclosed with each unit package.

The default hub spring increases the contact pressure on the floor.

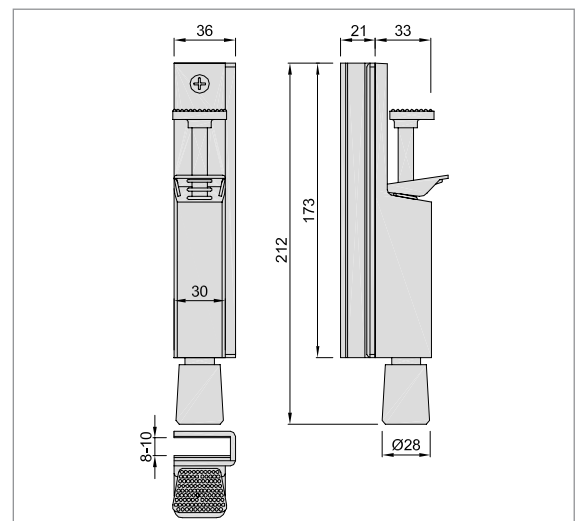
1133..

30 mm throw

with clamp for all glass doors (8 - 10 mm)

housing of aluminium with clamp stainless special steel, matching colour

foot of plastic, grey

**Order example**

Piece	Part no.	Finish no.
... Piece	1133	.33



1044..

60 mm throw

1045..

90 mm throw

1046..

120 mm throw

housing of aluminium,
foot of plastic, grey

Standard design

aluminium	
bolt stainless steel	
silver stove enamelled	.02
black stove enamelled	.03
dark brown stove enamelled	.10
coloured plastic-coated	.70

aluminium machined according to E 5	
bolt stainless steel	
KWS 1 silver anodised	.31
KWS 2 nickel silver anodised	.32
KWS 3 gold anodised	.33
brushed stainless steel effect anodised	.35
KWS 5 dark bronze anodised	.37

unit	1 piece
------	---------

Piece weight		
aluminium	1044..	0.470 kg
	1045..	0.550 kg
	1046..	0.610 kg

Application	
max. door weight approx.	80 kg

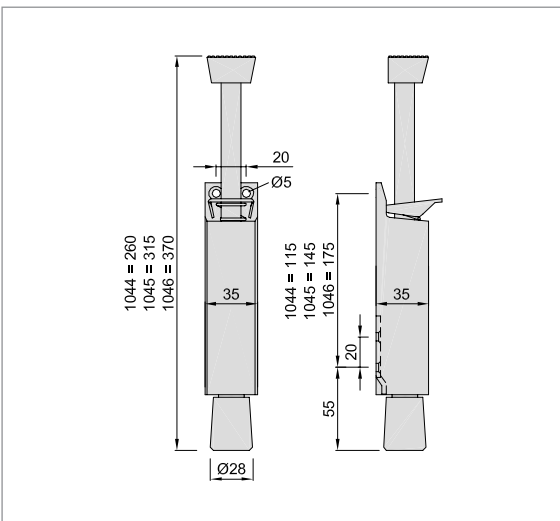
Operation

The door can be held open at any opening angle. For this the bolt is pushed down until the foot sticks on the floor. For releasing the door a gentle push on the check plate suffices.

Mounting

The door holder is screwed on the door with four screws in combination with a mounting plate at the greatest possible distance from the door hinge. The distance from bottom edge of door to foot is to be 5 - 10 mm. Every unit package includes fixing instructions and boring template.

The default hub spring increases the contact pressure on the floor.



Order example

Piece	Part no.	Finish no.
... Piece	1044	.31

Standard design

aluminium	
bolt stainless steel	
silver stove enamelled	.02
black stove enamelled	.03
dark brown stove enamelled	.10
coloured plastic-coated	.70

aluminium machined according to E 5

bolt stainless steel	
KWS 1 silver anodised	.31
KWS 2 nickel silver anodised	.32
KWS 3 gold anodised	.33
brushed stainless steel effect anodised	.35
KWS 5 dark bronze anodised	.37

unit	1 piece
------	---------

Piece weight

aluminium	1040..	0.650 kg
	1041..	0.730 kg
	1042..	0.790 kg

Application

max. door weight approx.	100 kg
--------------------------	--------

Operation

The door is opened up to the flush-mounted socket. By kicking down the bolt the door is held open. For releasing the door a gentle push on the check plate of the holder suffices.

Mounting

The door holder is screwed on the door with four screws in combination with a mounting plate at the greatest possible distance from the door hinge. The distance from bottom edge of door to bolt is to be 5 - 10 mm. The floor socket is inserted into the floor at the desired arresting point. Every unit package includes fixing instructions and boring template.

1040..

60 mm throw

1041..

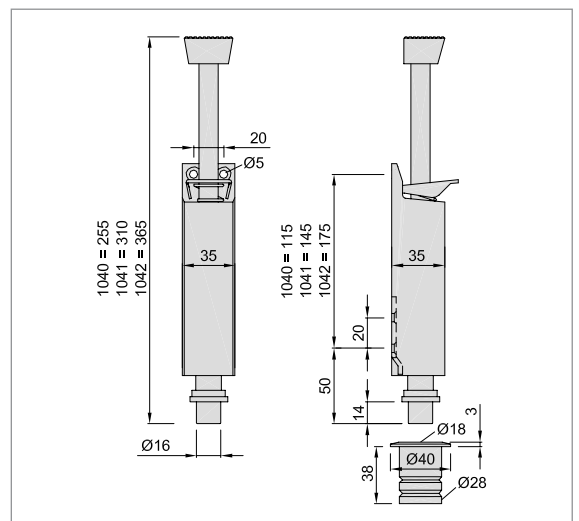
90 mm throw

1042..

120 mm throw

with floor socket
stainless steel

housing of lightmetal



Order example

Piece	Part no.	Finish no.
... Piece	1040	.02



1222..

60 mm throw

1224..

90 mm throw

1226..

120 mm throw

housing of aluminium

all other metal parts of steel, zinc-plated

foot of rubber, grey

1223..

60 mm throw

1225..

90 mm throw

1227..

120 mm throw

housing of aluminium

all other metal parts stainless steel

foot of rubber, grey

Standard design

aluminium

silver stove enamelled	.02
black stove enamelled	.03
dark brown stove enamelled	.10
coloured plastic-coated	.70

aluminium machined according to E 5

only for 1223.. 1225.. and 1227

brushed stainless steel effect anodised	.35
---	-----

aluminium machined according to E 6

KWS 1 silver anodised	.41
KWS 2 nickel silver anodised	.42
KWS 3 gold anodised	.43
KWS 5 dark bronze anodised	.47

unit	1 piece
------	---------

Piece weight

aluminium	1222.. 1223..	0.500 kg
	1224.. 1225..	0.650 kg
	1226.. 1227..	0.790 kg

Application

max. door weight approx.	40 kg
--------------------------	-------

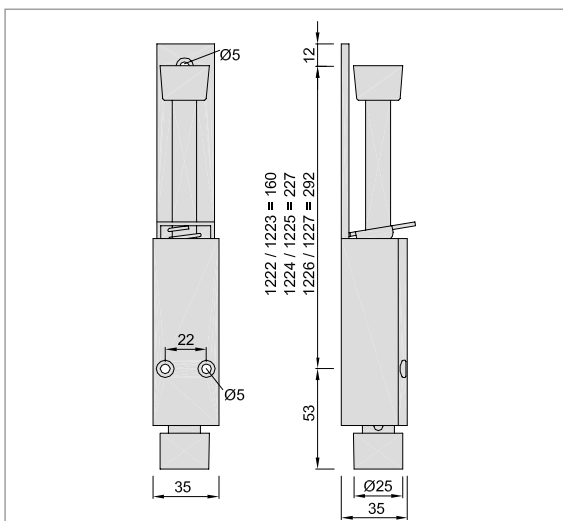
Operation

The door can be held open at any opening angle. For this the bolt is pushed down until the foot sticks on the floor. For releasing the door a gentle push on the check plate suffices.

Mounting

The door holder is screwed on the door at the greatest possible distance from the door hinge. The distance from bottom edge of door to foot is to be 5 - 10 mm. Every unit package includes fixing instructions, boring template as well as fixing material.

The default hub spring increases the contact pressure on the floor.



Order example

Piece	Part no.	Finish no.
... Piece	1222	.02

Standard design

aluminium	
arresting pole steel zinc-plated	
silver stove enamelled	.02
black stove enamelled	.03
dark brown stove enamelled	.10
coloured plastic-coated	.70

aluminium machined according to E 5

arresting pole stainless steel	
KWS 1 silver anodised	.31
KWS 2 nickel silver anodised	.32
KWS 3 gold anodised	.33
brushed stainless steel effect anodised	.35
KWS 5 dark bronze anodised	.37

unit	1 piece
------	---------

Piece weight

aluminium	0.920 kg
-----------	----------

Application

max. door weight approx.	80 kg
--------------------------	-------

Operation

The door can be held open at any opening angle. For this the arresting pole is pushed down until the foot sticks on the floor. For releasing the door a gentle push on the check plate while simultaneously pulling the arresting pole up suffices.

Mounting

The door holder is screwed on the door with four screws in combination with a mounting plate at the greatest possible distance from the door hinge. The distance from bottom edge of door to foot is to be 20 mm. Every unit package includes fixing instructions and boring template.

The default hub spring increases the contact pressure on the floor.

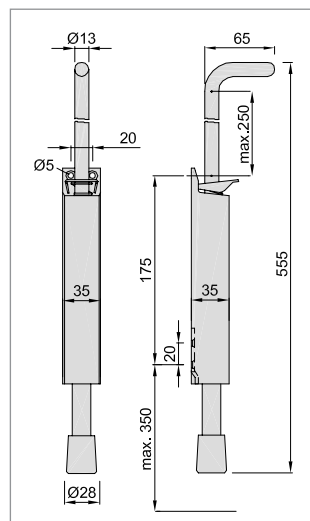
1048..

250 mm throw

for huge differences in height or for operation by wheelchair users

housing of aluminium

foot of plastic, grey



Order example

Piece	Part no.	Finish no.
... Piece	1048	.03



1043..

120 mm throw

housing of steel

foot of rubber, grey

This door holder should, due to its dimensions (445 mm) and its proper weight (1.9 kg), only be used for heavy doors or gates.

Standard design

steel	
bolt steel zinc-plated	
silver stove enamelled	.02
black stove enamelled	.03
dark brown stove enamelled	.10
unit	1 piece

Piece weight

steel	1.900 kg
-------	-----------------

Application

max. door weight approx.	200 kg
--------------------------	--------

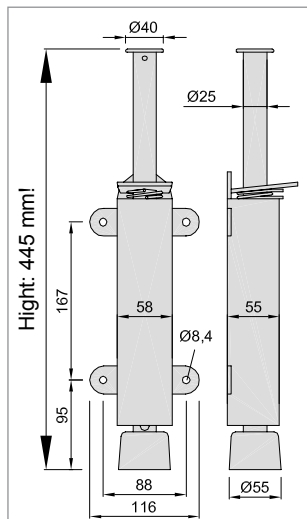
Operation

The door can be held open at any opening angle. For this the bolt is pushed down until the foot sticks on the floor. For releasing the door a gentle push on the check plate suffices.

Mounting

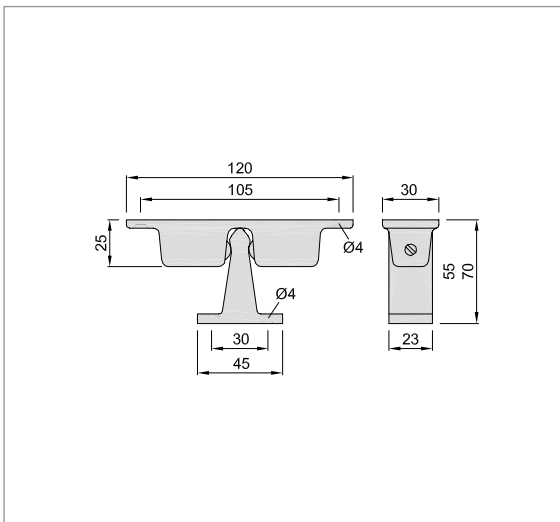
The door holder is screwed on the door at the greatest possible distance from the door hinge. The distance from bottom edge of door to foot is to be 20 mm.

The default hub spring increases the contact pressure on the floor.



Order example

Piece	Part no.	Finish no.
... Piece	1043	.03



1055..

for 55 mm distance

1083..

for 70 mm distance

for screwing on

Operation

By simply pushing or pulling the door it is held or released.

Mounting

The holder is fastened on the door at the greatest possible distance from the door hinge and the block is screwed on the wall at the corresponding position. A horizontal fixing of the holder on the door ensures the correct operation also in case of doors lifting or sagging slightly later. By means of adjustment screws the ball pressure can be set.

Standard design

aluminium

holder of steel	
silver stove enamelled	.02
black stove enamelled	.03
dark brown stove enamelled	.10
coloured plastic-coated	.70

brass

holder of brass	
brushed and lacquered	.62
nickel plated	.63
polished and lacquered	.66

unit	5 pieces
------	----------

Piece weight

aluminium	0.150 kg
brass	0.220 kg

Application

max. door weight approx.	80 kg
holding force	80-220 N

Order example

Piece	Part no.	Finish no.
... Piece	1055	.02

Standard design

aluminium

holder of steel	
silver stove enamelled	.02
black stove enamelled	.03
dark brown stove enamelled	.10
coloured plastic-coated	.70

unit	5 pieces
------	----------

Piece weight

aluminium	0.210 kg
-----------	----------

Application

max. door weight approx.	80 kg
holding force	80-220 N

1056..

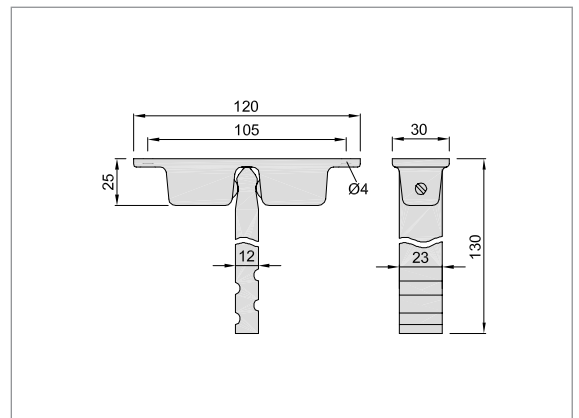
with block for casting-in in the wall

Operation

By simply pushing or pulling the door it is held or released.

Mounting

The holder is fastened on the door at the greatest possible distance from the door hinge and the block is inserted in the wall at the corresponding position. A horizontal fixing of the holder on the door ensures the correct operation also in case of doors lifting or sagging slightly later. By means of adjustment screws the ball pressure can be set.



Standard design

aluminium

holder of steel	
silver stove enamelled	.02
black stove enamelled	.03
dark brown stove enamelled	.10
coloured plastic-coated	.70

unit	5 pieces
------	----------

Piece weight

aluminium	0.210 kg
-----------	----------

Application

max. door weight approx.	80 kg
holding force	80-220 N

1057..

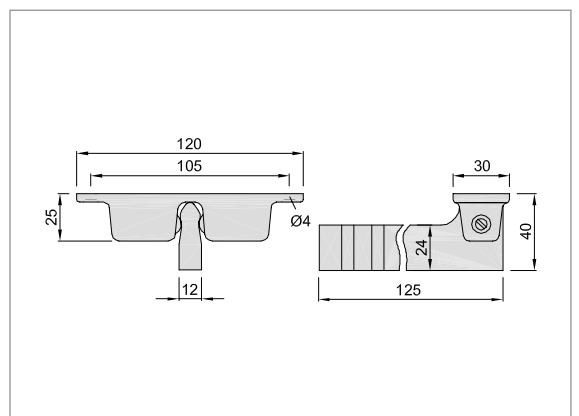
with block for casting-in in the floor

Operation

By simply pushing or pulling the door it is held or released.

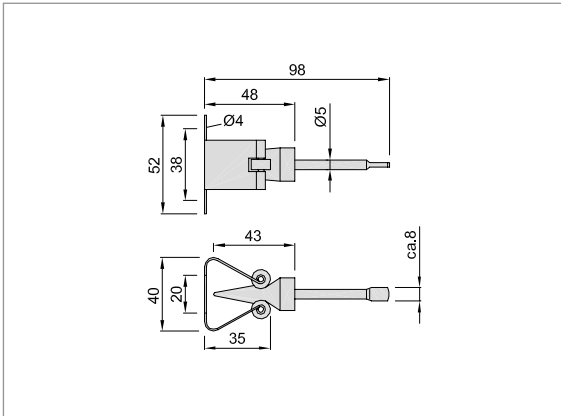
Mounting

The holder is fastened on the door at the greatest possible distance from the door hinge and the block is inserted in the floor at the corresponding position. A horizontal fixing of the holder on the door ensures the correct operation also in case of doors lifting or sagging slightly later. By means of adjustment screws the ball pressure can be set.



Order example

Piece	Part no.	Finish no.
... Piece	1056	.03



1063..

with bracket for casting in

rollers of plastic

Operation

For holding the door it is pushed with its catch spring onto the wall-mounted bracket. For releasing the door just pull it off again.

Mounting

The catch spring is screwed on the door at the greatest possible distance from the door hinge ensuring that the screw holes are vertical. At the corresponding position the bracket is fixed on the wall by means of an anchor bolt.

Standard design

aluminium	
catch spring of spring steel	
silver stove enamelled	.02
black stove enamelled	.03

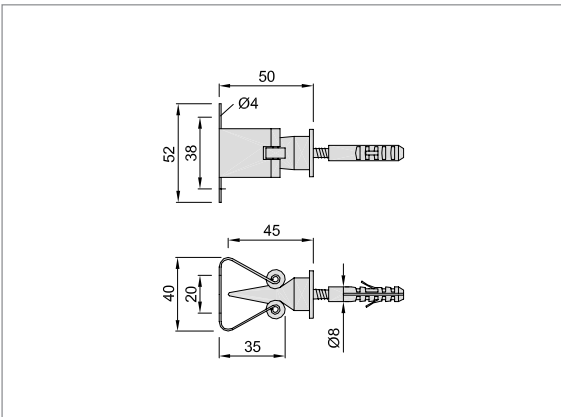
unit	10 pieces
------	-----------

Piece weight

aluminium	0.050 kg
-----------	----------

Application

max. door weight approx.	25 kg
holding force	200 N



1163..

with bracket for plugging

rollers of plastic

Operation

For holding the door it is pushed with its catch spring onto the wall-mounted bracket. For releasing the door just pull it off again.

Mounting

The catch spring is screwed on the door at the greatest possible distance from the door hinge ensuring that the screw holes are vertical. At the corresponding position the bracket is fixed on the wall.

Standard design

aluminium	
catch spring of spring steel	
silver stove enamelled	.02
black stove enamelled	.03

unit	10 pieces
------	-----------

Piece weight

aluminium	0.050 kg
-----------	----------

Application

max. door weight approx.	25 kg
holding force	200 N

Order example

Piece	Part no.	Finish no.
... Piece	1063	.02

Standard design

aluminium

catch spring of spring steel	
silver stove enamelled	.02
black stove enamelled	.03

unit	10 pieces
------	-----------

Piece weight

aluminium	0.050 kg
-----------	----------

Application

max. door weight approx.	25 kg
holding force	200 N

1064..

with bracket for screwing on

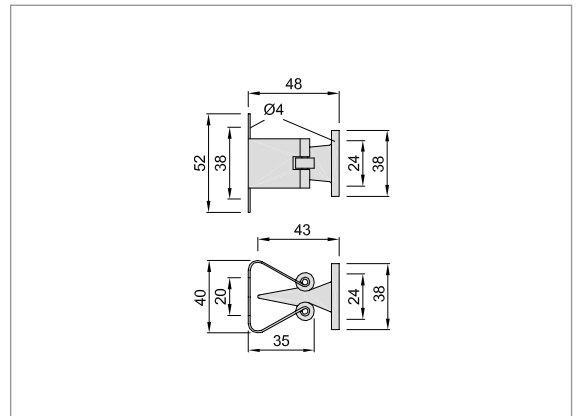
rollers of plastic

Operation

For holding the door it is pushed with its catch spring onto the wall-mounted bracket. For releasing the door just pull it off again.

Mounting

The catch spring is screwed on the door at the greatest possible distance from the door hinge ensuring that the screw holes are vertical. At the corresponding position the bracket is screwed on the wall.



Standard design

aluminium

catch spring of spring steel	
silver stove enamelled	.02
black stove enamelled	.03

unit	10 pieces
------	-----------

Piece weight

aluminium	0.025 kg
-----------	----------

Application

max. door weight approx.	20 kg
holding force	100 N

1066..

with bracket for screwing on

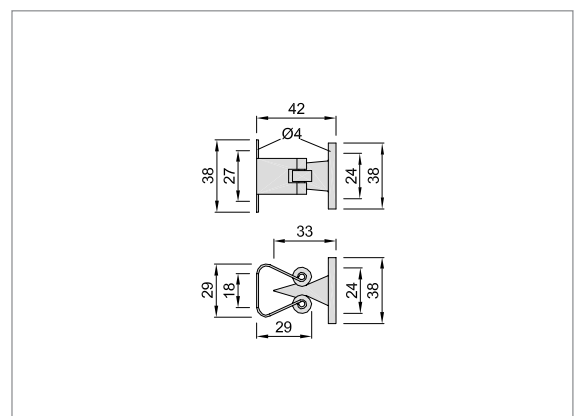
rollers of plastic

Operation

For holding the door it is pushed with its catch spring onto the wall-mounted bracket. For releasing the door just pull it off again.

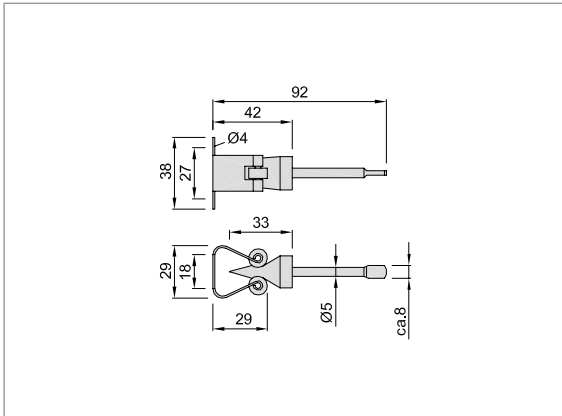
Mounting

The catch spring is screwed on the door at the greatest possible distance from the door hinge ensuring that the screw holes are vertical. At the corresponding position the bracket is screwed on the wall.



Order example

Piece	Part no.	Finish no.
... Piece	1064	.03



1065..

with bracket for casting in

rollers of plastic

Operation

For holding the door it is pushed with its catch spring onto the wall-mounted bracket. For releasing the door just pull it off again.

Mounting

The catch spring is screwed on the door at the greatest possible distance from the door hinge ensuring that the screw holes are vertical. At the corresponding position the bracket is fixed on the wall by means of an anchor bolt.

Standard design

aluminium	
catch spring of spring steel	
silver stove enamelled	.02
black stove enamelled	.03

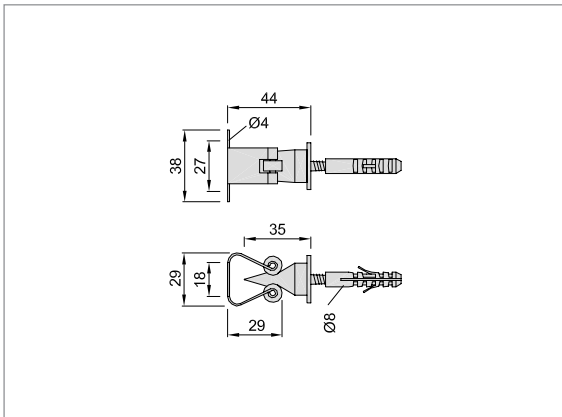
unit	10 pieces
------	-----------

Piece weight

aluminium	0.030 kg
-----------	----------

Application

max. door weight approx.	20 kg
holding force	200 N



1165..

with bracket for plugging

rollers of plastic

Operation

For holding the door it is pushed with its catch spring onto the wall-mounted bracket. For releasing the door just pull it off again.

Mounting

The catch spring is screwed on the door at the greatest possible distance from the door hinge ensuring that the screw holes are vertical. At the corresponding position the bracket is fixed on the wall.

Standard design

aluminium	
catch spring of spring steel	
silver stove enamelled	.02
black stove enamelled	.03

unit	10 pieces
------	-----------

Piece weight

aluminium	0.030 kg
-----------	----------

Application

max. door weight approx.	20 kg
holding force	200 N

Order example

Piece	Part no.	Finish no.
... Piece	1065	.02

Standard design

aluminium

catch spring of spring steel	
silver stove enamelled	.02
black stove enamelled	.03

brass

catch spring of brass	
brushed and lacquered	.62
nickel plated	.63
polished and lacquered	.66

unit	10 pieces
------	-----------

Piece weight

aluminium	0.150 kg
brass	0.240 kg

Application

max. door weight approx.	50 kg
holding force	280 N

1067..

with bracket for casting in

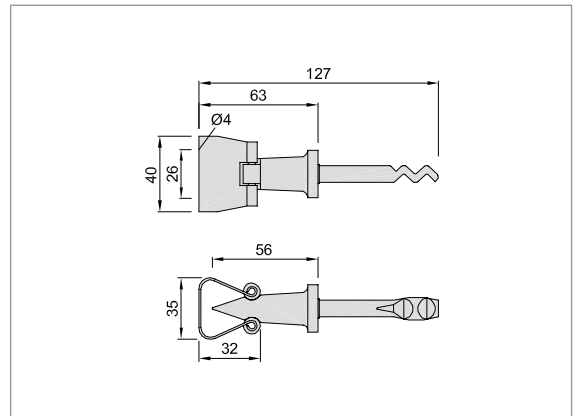
rollers of brass

Operation

For holding the door it is pushed with its catch spring onto the wall-mounted bracket. For releasing the door just pull it off again.

Mounting

The catch spring is screwed on the door at the greatest possible distance from the door hinge ensuring that the screw holes are vertical. At the corresponding position the bracket is fixed on the wall by means of an anchor bolt.



Standard design

aluminium

catch spring of spring steel	
silver stove enamelled	.02
black stove enamelled	.03

brass

catch spring of brass	
brushed and lacquered	.62
nickel plated	.63
polished and lacquered	.66

unit	10 pieces
------	-----------

Piece weight

aluminium	0.150 kg
brass	0.240 kg

Application

max. door weight approx.	50 kg
holding force	280 N

1167..

with bracket for plugging

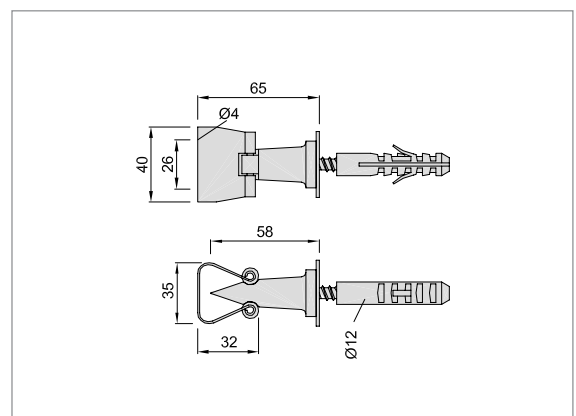
rollers of brass

Operation

For holding the door it is pushed with its catch spring onto the wall-mounted bracket. For releasing the door just pull it off again.

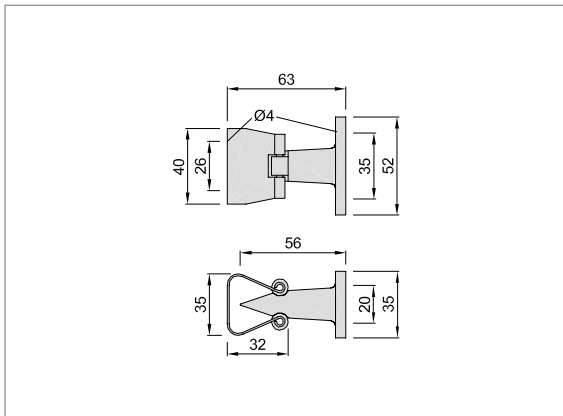
Mounting

The catch spring is screwed on the door at the greatest possible distance from the door hinge ensuring that the screw holes are vertical. At the corresponding position the bracket is fixed on the wall.



Order example

Piece	Part no.	Finish no.
... Piece	1067	.03



1068..

with bracket for screwing on
rollers of brass

Operation

For holding the door it is pushed with its catch spring onto the wall-mounted bracket. For releasing the door just pull it off again.

Mounting

The catch spring is screwed on the door at the greatest possible distance from the door hinge ensuring that the screw holes are vertical. The bracket is screwed on the wall at the corresponding position.

Standard design

aluminium

catch spring of spring steel	
silver stove enamelled	.02
black stove enamelled	.03

brass

catch spring of brass	
brushed and lacquered	.62
nickel plated	.63
polished and lacquered	.66

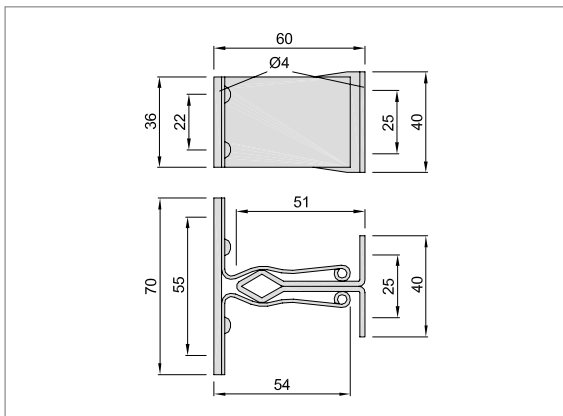
unit	10 pieces
------	-----------

Piece weight

aluminium	0.080 kg
brass	0.190 kg

Application

max. door weight approx.	50 kg
holding force	280 N



1072..

catchspring of spring steel

bracket and base plate of catch spring of steel

Operation

For holding the door it is pushed with its catch spring onto the wall-mounted bracket. For releasing the door just pull it off again.

Mounting

The catch spring is screwed on the door at the greatest possible distance from the door hinge ensuring that the screw holes are vertical. At the corresponding position the bracket is screwed on the wall.

Standard design

steel

silver stove enamelled	.02
black stove enamelled	.03

unit	10 pieces
------	-----------

Piece weight

aluminium	0.200 kg
-----------	----------

Application

max. door weight approx.	50 kg
holding force	100 N

Order example

Piece	Part no.	Finish no.
... Piece	1068	.03



Standard design

steel	
electro-galvanised	.06

stainless steel

brushed	.82
polished	.83

unit	1 piece
------	---------

Piece weight

stainless steel	0.710 kg
steel	0.830 kg

Application

max. door weight approx.	100 kg
--------------------------	--------

1017..

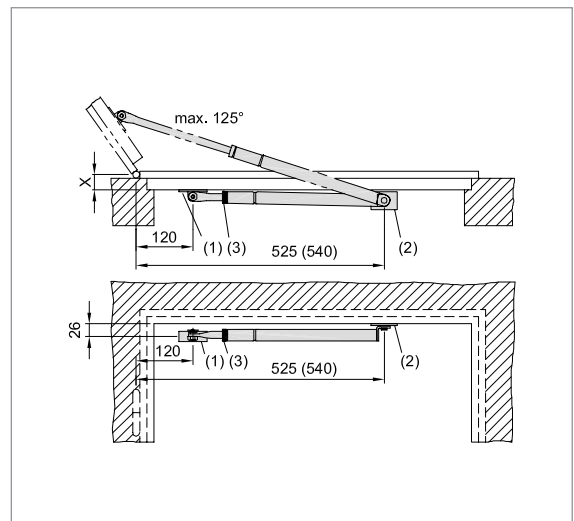
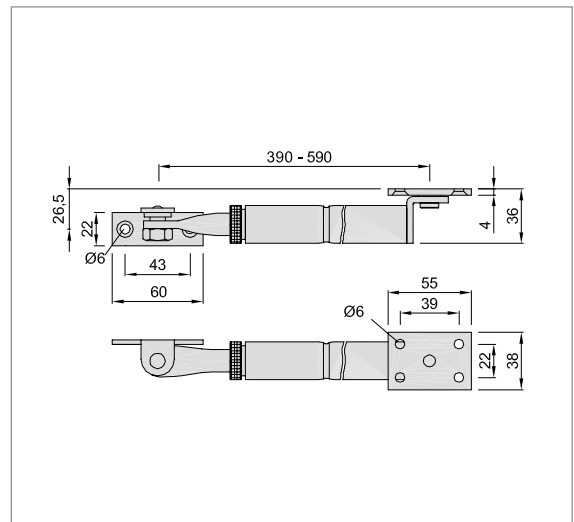
with adjustable brake action, especially suitable for e. g. garage doors

Operation

By overcoming the brake power the door can be opened up to 125° and can be locked in position at any point within this range. The brake power is altered by turning the knurled adjuster.

Mounting

The stop bracket (1) should be fixed to the door at a distance of 120 mm measured between the middle of the hinge plate and the centre of the hex nut. Mounting plate (2) should be screwed underneath the door frame at 525 mm measured from centre of hinge plate to centre of pivot. There should be a distance of 2 - 3 mm between the closed door and mounting plate. Detailed instructions are included with every unit. This door brake should not be used as a limit stop.



Order example

Piece	Part no.	Finish no.
... Piece	1017	.82



1301..

105 mm - to 80 kg

1303..

117 mm - to 100 kg

1305..

120 mm - to 150 kg

with anchor bolt for casting-in
in the floor
of malleable cast iron
holding bracket of steel

Standard design

malleable cast iron	
black stove enamelled	.03
hot galvanised	.07

unit	2 pieces
------	----------

Piece weight

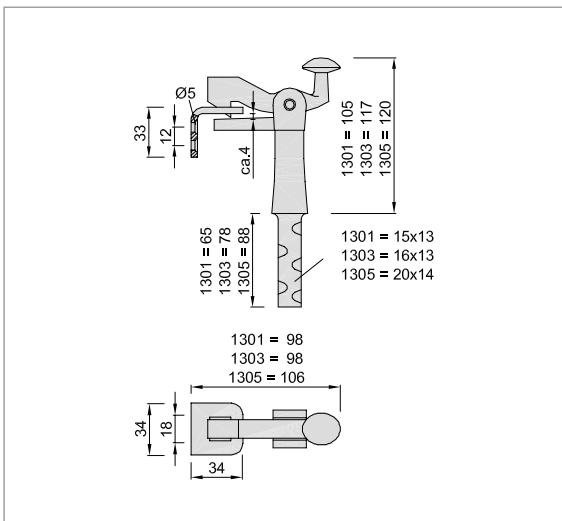
malleable cast iron	1301..	0.480 kg
	1303..	0.580 kg
	1305..	0.780 kg

Operation

The gate is held automatically by pushing it onto the holder. A gentle push on the hook releases the gate again.

Mounting

The gate holder is inserted into the floor at the desired arresting point which should be the greatest possible distance from the door hinge. At the corresponding point the holding bracket is fastened on the gate with a 4 mm height distance to the stop plate of the holder in such a way that the screw holes are below the catch hole. In this way when arresting the gate the holding bracket also serves as a stop plate.



Order example

Piece	Part no.	Finish no.
... Piece	1301	.03



Standard design

malleable cast iron

black stove enamelled	.03
hot galvanised	.07

unit	2 pieces
------	----------

Piece weight

malleable cast iron	1302..	0.470 kg
	1304..	0.570 kg
	1306..	0.780 kg

Operation

The gate is held automatically by pushing it onto the holder. A gentle push on the hook releases the gate again.

Mounting

The gate holder is inserted into the wall at the desired arresting point which should be the greatest possible distance from the door hinge. At the corresponding point the holding bracket is fastened on the gate with a 4 mm height distance to the stop plate of the holder in such a way that the screw holes are below the catch hole. When arresting the gate the holding bracket also serves as a stop plate in this way.

1302..

110 mm - to 80 kg

1304..

125 mm - to 100 kg

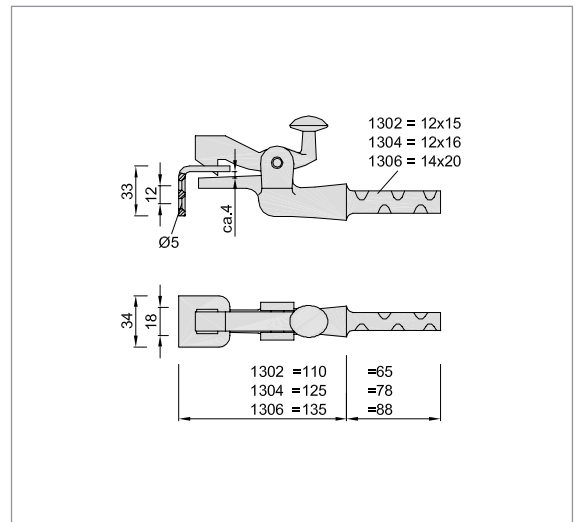
1306..

135 mm - to 150 kg

with anchor bolt for casting-in in the wall

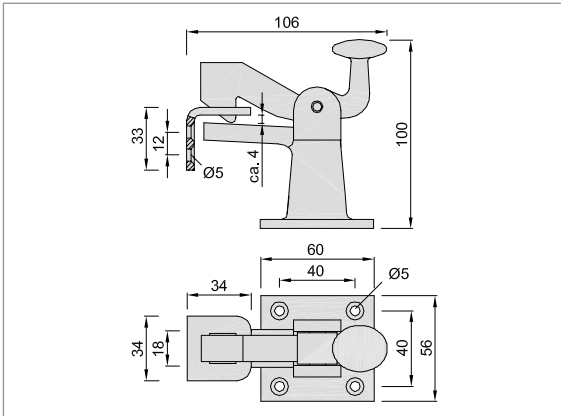
of malleable cast iron

holding bracket of steel



Order example

Piece	Part no.	Finish no.
... Piece	1302	.03



1307..

for gates up to 100 kg
 for screwing on the floor
 of malleable cast iron
 holding bracket of steel

Operation
 The gate is held automatically by pushing it onto the holder. A gentle push on the hook releases the gate again.

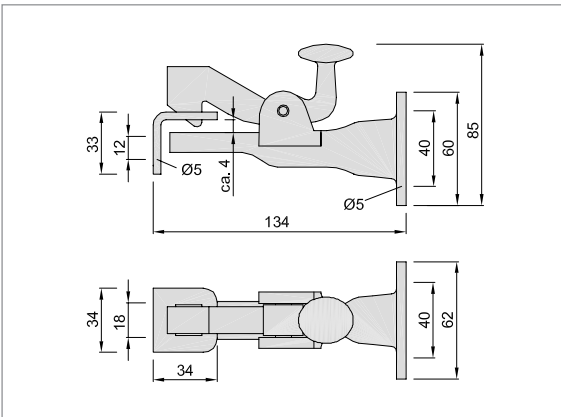
Mounting
 The gate holder is screwed on the floor at the desired holding point which should be the greatest possible distance from the door hinge. At the corresponding point the holding bracket is fastened on the gate with a 4 mm height distance to the stop plate of the holder in such a way that the screw holes are below the catch hole. When arresting the gate the holding bracket also serves as a stop plate in this way.

Standard design

malleable cast iron	
black stove enamelled	.03
hot galvanised	.07
unit	2 pieces

Piece weight

malleable cast iron	0.620 kg
---------------------	----------



1308..

for gates up to 100 kg
 for screwing on the wall
 of malleable cast iron
 holding bracket of steel

Operation
 The gate is held automatically by pushing it onto the holder. A gentle push on the hook releases the gate again.

Mounting
 The gate holder is screwed on the wall at the desired holding point which should be the greatest possible distance from the door hinge. At the corresponding point the holding bracket is fastened on the gate with a 4 mm height distance to the stop plate of the holder in such a way that the screw holes are below the catch hole. When arresting the gate the holding bracket also serves as a stop plate in this way.

Standard design

malleable cast iron	
black stove enamelled	.03
hot galvanised	.07
unit	2 pieces

Piece weight

malleable cast iron	0.700 kg
---------------------	----------

Order example

Piece	Part no.	Finish no.
... Piece	1307	.03

Standard design

steel	
silver stove enamelled	.02
black stove enamelled	.03

stainless steel	
brushed	.82

unit	1 piece
------	---------

Piece weight	
steel	0.380 kg
stainless steel	0.406 kg

1311..

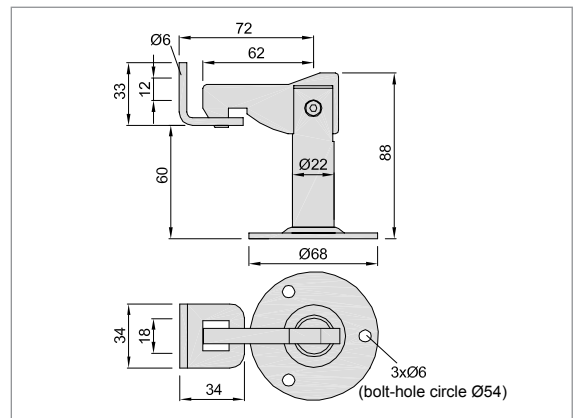
for gates up to 100 kg
for screwing on the floor
of steel or stainless steel

Operation

The gate is held automatically by pushing it onto the holder. A gentle push on the hook releases the gate again.

Mounting

The gate holder is screwed on the floor using plugs at the desired arresting point which should be the greatest possible distance from the door hinge. At the corresponding position the holding bracket with fastened on the gate with three screws. By unscrewing the centre and repositioning the hook the holder can be converted from floor to wall mounting.



Standard design

steel	
silver stove enamelled	.02
black stove enamelled	.03

stainless steel	
brushed	.82

unit	1 piece
------	---------

Piece weight	
steel	0.380 kg
stainless steel	0.406 kg

1312..

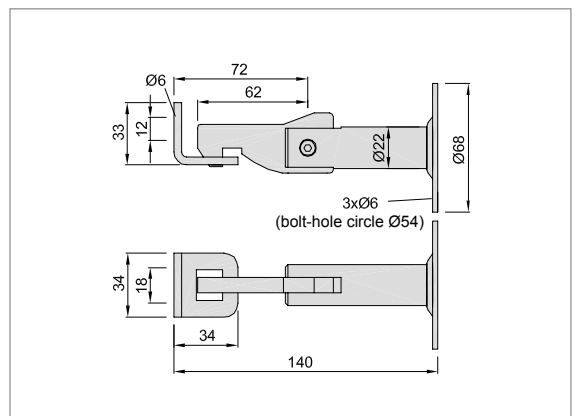
for gates up to 100 kg
for screwing on the wall
of steel or stainless steel

Operation

The gate is held automatically by pushing it onto the holder. A gentle push on the hook releases the gate again.

Mounting

The gate holder is screwed on the wall using plugs at the desired arresting point which should be the greatest possible distance from the door hinge. At the corresponding position the holding bracket is fastened on the gate with three screws. By unscrewing the hook the holder can be converted from wall to floor mounting.



Order example

Piece	Part no.	Finish no.
... Piece	1311	.82



1318..

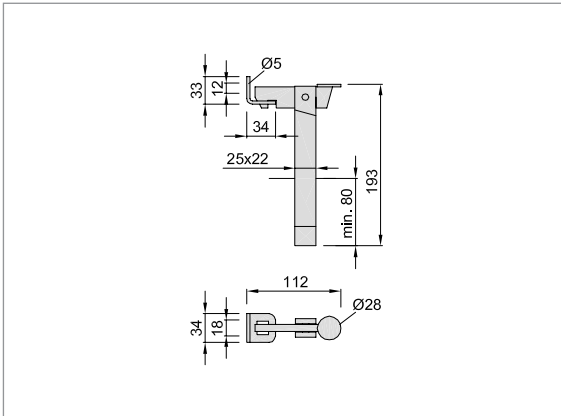
for gates up to 150 kg
 for casting into the floor
 of flat bar steel,
 holding bracket of steel

Operation

The gate is held automatically by pushing it onto the holder. A gentle push on the hook releases the gate again.

Mounting

The gate holder is inserted into the floor at the desired arresting point at a depth at least 80 mm which should be the greatest possible distance from the door hinge. At the corresponding point the holding bracket is fastened on the gate with three screws in such a way that the screw holes are above the catch hole. When arresting the gate the holding bracket then also serves as a stop plate.



Standard design

steel	
black stove enamelled	.03
hot galvanised	.07
unit	2 pieces

Piece weight

steel	0.640 kg
-------	----------



1315..

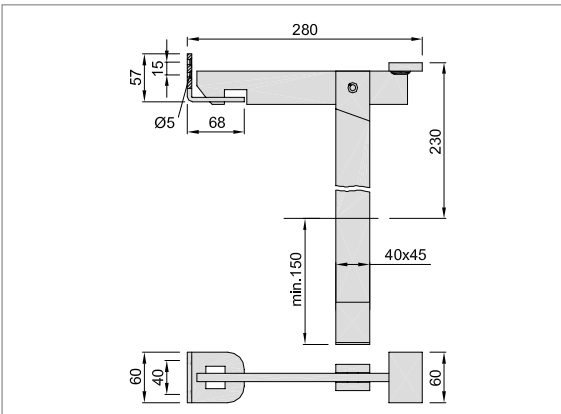
for gates up to 300 kg
 for casting-in in the floor
 of flat bar steel,
 holding bracket of steel

Operation

The gate is held automatically by pushing it onto the holder. A gentle push on the hook releases the gate again.

Mounting

The gate holder is inserted into the floor at the desired arresting point at a depth of at least 150 mm which should be the greatest possible distance from the door hinge. At the corresponding point the holding bracket is fastened on the gate with three screws in such a way that the screw holes are above the catch hole. When arresting the gate the holding bracket then also serves as a stop plate.



Standard design

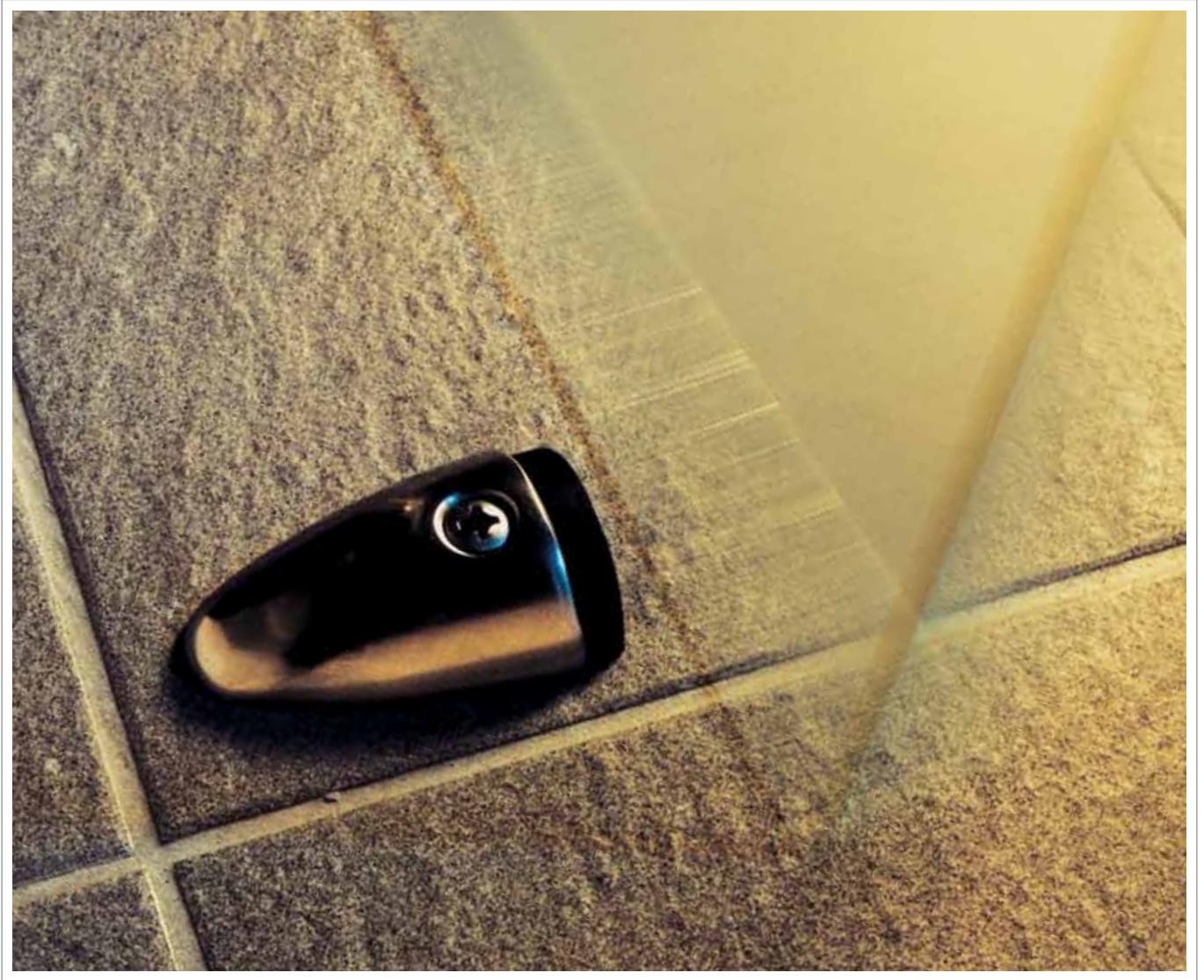
steel	
black stove enamelled	.03
hot galvanised	.07
unit	2 pieces

Piece weight

steel	3.600 kg
-------	----------

Order example

Piece	Part no.	Finish no.
... Piece	1318	.03



Technical note

Door stops are required for all types of doors and the KWS range is accordingly wide. While for the interior relatively flat and compact door stops are desired, for exterior doors door stops are used that cushion the impact of a heavy door by a spring mechanism.

In public buildings, in particular, sturdy door stops should be chosen for heavy-duty doors. Door stops are also differentiated between whether they are mounted on the floor or on the wall.

To give you a better idea, here are few examples:

Light to medium interior doors:



2001..

floor mounting



2003..

floor mounting



2095..

floor mounting



2110..

floor mounting (spring-loaded)



2007..

wall mounting



2076..

wall mounting

Medium to heavy interior and exterior doors:**2024..**

floor mounting (spring-loaded)

**2051..**

wall mounting (spring-loaded)

Heavy doors and gates:**2019..**

floor mounting (spring-loaded)

**2120..**

wall mounting (spring-loaded)

Things to be taken into account when mounting door stops:

The forces between door and stop are not be underestimated, the stop should not hit the door handles or pulls. Door stops should hit the door leaf – at a right angle – as far from the hinge edge as possible. In our range there are heavy wall stops with adjustable angle (e. g. **2051..**).

A floor stop should not become a tripping hazard and is thus to be mounted as close to the wall as possible. Flat stops like the well-known **2001..** or the **2003..** are basically tripping hazard free.

In any case it is crucial to mount neatly and to use pins that prevent the turning of the stop. KWS stops either have this pin or a multipoint fixing method. For outdoors a type for casting in (e. g. **2023..** or **2019..**) is recommendable.

Also please observe the product-related recommendations.



page 70



page 71



page 72



page 73



page 74



page 74



page 75



page 75



page 76



page 77



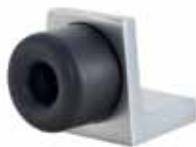
page 78



page 78



page 79



page 79



page 80



page 80



page 81



page 81



page 82



page 83



page 84



page 84



page 85



page 86



page 87



page 88



page 89



page 90



page 90



page 91



page 91



page 92



page 93



2001..

with fixing material

2002..

without fixing material

with black rubber stop

on request also available with white rubber stop

Accessories

For height compensation we recommend the additional use of shims **1557..** (5 mm), **1558..** (10 mm) or **1559..** (15 mm).

Mounting

The door stop is screwed on the floor at the greatest possible distance from the door hinge.

The locating pin prevents the door stop from turning.



Standard design

aluminium	
coloured plastic-coated	.70

aluminium machined according to E 5

KWS 1 silver anodised	.31
KWS 2 nickel silver anodised	.32
KWS 3 gold anodised	.33
KWS 5 dark bronze anodised	.37

brass

brushed and lacquered	.62
nickel plated	.63
polished and lacquered	.66

stainless steel

brushed	.82
polished	.83

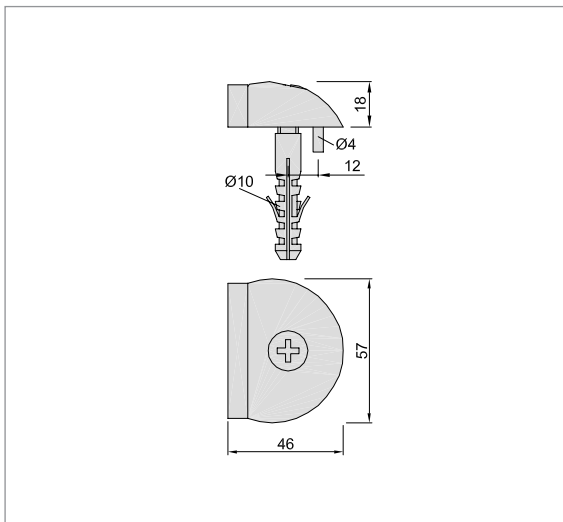
unit	20 pieces
------	-----------

Piece weight

aluminium	0.065 kg
brass	0.075 kg
stainless steel	0.075 kg

Application

max. door weight approx.	50 kg
--------------------------	-------



1557..

shim 5 mm high

1558..

shim 10 mm high

1559..

shim 15 mm high

Standard design

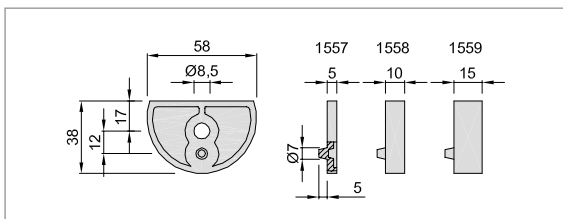
see 2001 2002..	
unit	20 pieces

Piece weight

aluminium	1557..	0.018 kg
	1558..	0.031 kg
	1559..	0.040 kg
brass	1557..	0.034 kg
	1558..	0.053 kg
	1559..	0.068 kg
stainless steel	1557..	0.035 kg
	1558..	0.049 kg
	1559..	0.067 kg

Order example

Piece	Part no.	Finish no.
... Piece	2001	.83



Standard design

aluminium	
coloured plastic-coated	.70

aluminium machined according to E 5

KWS 1 silver anodised	.31
KWS 2 nickel silver anodised	.32
KWS 3 gold anodised	.33
KWS 5 dark bronze anodised	.37

brass

brushed and lacquered	.62
nickel plated	.63
polished and lacquered	.66

stainless steel

brushed	.82
polished	.83

unit	20 pieces
------	-----------

Piece weight

aluminium	0.065 kg
brass	0.075 kg
stainless steel	0.075 kg

Application

max. door weight approx.	40 kg
--------------------------	-------

2003..

with fixing material

2004..

without fixing material

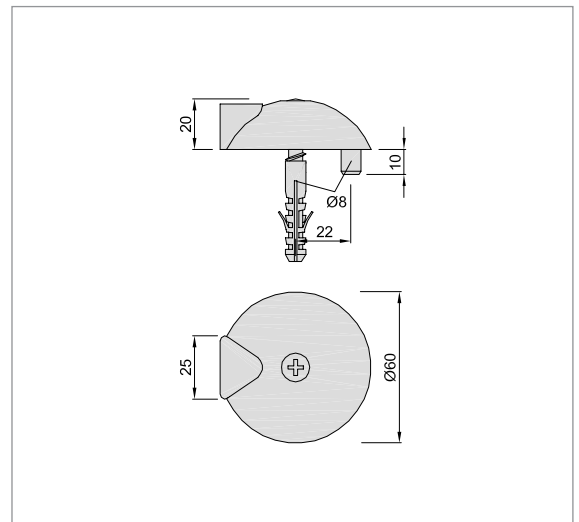
with black rubber stop

on request also available with white rubber stop.

For height compensation we recommend the additional use of shim **2559..** (15 mm).

Mounting

The door stop is screwed on the floor at the greatest possible distance from the door hinge. The locating pin prevents the door stop from turning.



Standard design

aluminium	
coloured plastic-coated	.70
black	RAL 9011

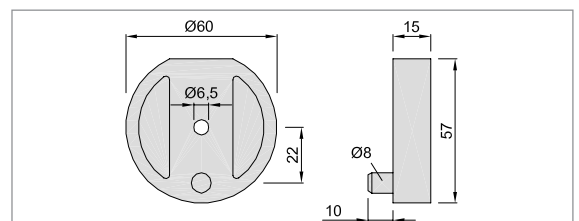
unit	1 piece
------	---------

Piece weight

aluminium	0.055 kg
-----------	----------

2559..

shim 15 mm high



Order example

Piece	Part no.	Finish no.
... Piece	2003	.83



2090..

with pin for inserting and fixing material

2091..

with pin for inserting without fixing material

2092..

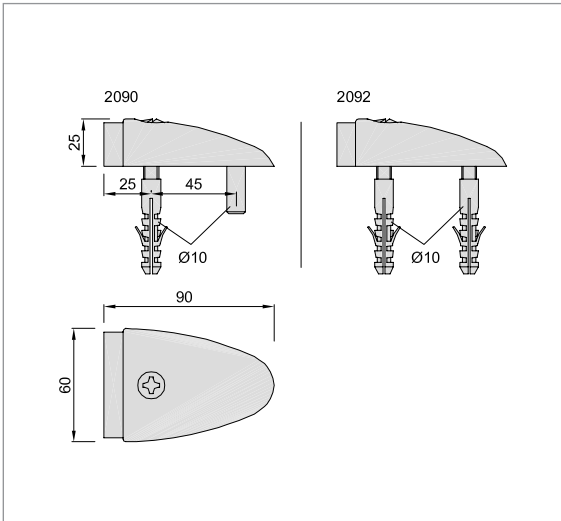
with fixing material

with black rubber stop

For height compensation we recommend the additional use of the shim **2590..** (15 mm).

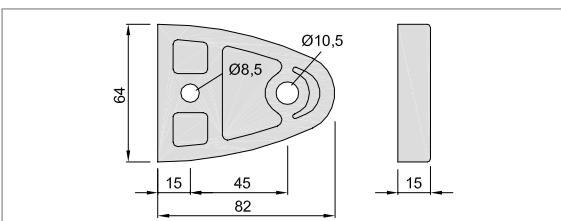
Mounting

The door stop is screwed on the floor at the greatest possible distance from the door hinge. The locating pin prevents the door stop from turning.



2590..

shim 15 mm high



Standard design

aluminium	
coloured plastic-coated	.70

aluminium machined according to E 5

KWS 1 silver anodised	.31
KWS 2 nickel silver anodised	.32
KWS 3 gold anodised	.33
KWS 5 dark bronze anodised	.37

brass

brushed and lacquered	.62
nickel plated	.63
polished and lacquered	.66

stainless steel

brushed	.82
polished	.83

unit	10 pieces
------	-----------

Piece weight

aluminium	0.160 kg
brass	0.210 kg
stainless steel	0.190 kg

Application

max. door weight approx.	80 kg
--------------------------	-------

Standard design

aluminium	
coloured plastic-coated	.70
black	RAL 9011

unit	1 piece
------	---------

Piece weight

aluminium	0.114 kg
-----------	----------

Order example

Piece	Part no.	Finish no.
... Piece	2090	.32

Standard design

aluminium	
coloured plastic-coated	.70

aluminium machined according to E 5

KWS 1 silver anodised	.31
KWS 2 nickel silver anodised	.32
KWS 3 gold anodised	.33
KWS 5 dark bronze anodised	.37

brass only for 2080.. 2081..

brushed and lacquered	.62
polished and lacquered	.66

unit	10 pieces
------	-----------

Piece weight

aluminium	2080..	0.045 kg
brass	2080..	0.090 kg

Application

max. door weight approx.	30 kg
--------------------------	-------

2080..

neck height 3 mm
with fixing material

2081..

neck height 3 mm
without fixing material

2082..

neck height 10 mm
with fixing material

2083..

neck height 10 mm
without fixing material

2084..

neck height 15 mm
with fixing material

2085..

neck height 15 mm
without fixing material

2086..

neck height 20 mm
with fixing material

2087..

neck height 20 mm
without fixing material

2088..

neck height 27 mm
with fixing material

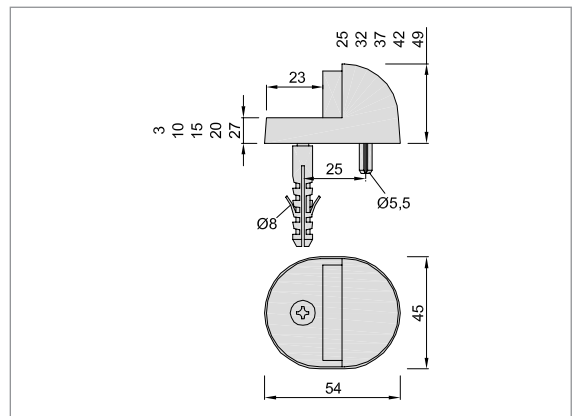
2089..

neck height 27 mm
without fixing material

with black rubber stop

Mounting

The door stop is screwed on the floor at the greatest possible distance from the door hinge. The locating pin prevents the door stop from turning.



Order example

Piece	Part no.	Finish no.
... Piece	2080	.32



2097..

Ø 35 mm with fixing material

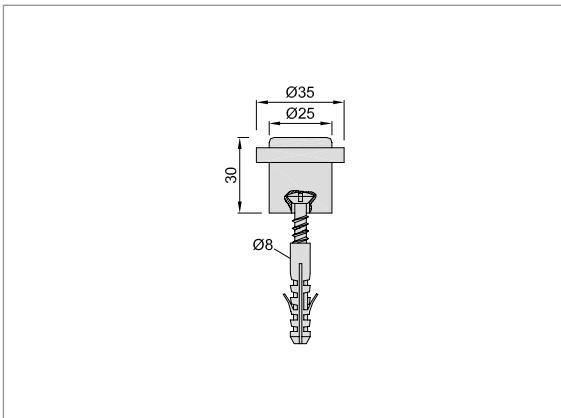
2098..

Ø 35 mm without fixing material

with black rubber ring

Mounting

Remove end cap, screw the door stop on the floor at the greatest possible distance from the door hinge, put on the end cap again and secure with clamp screw.



Standard design

aluminium	
coloured plastic-coated	.70

aluminium machined according to E 5

KWS 1 silver anodised	.31
KWS 2 nickel silver anodised	.32
KWS 3 gold anodised	.33
KWS 5 dark bronze anodised	.37

brass

brushed and lacquered	.62
nickel plated	.63
polished and lacquered	.66

stainless steel

brushed	.82
polished	.83

unit	10 pieces
------	-----------

Piece weight

aluminium	0.045 kg
brass	0.115 kg
stainless steel	0.110 kg

Application

max. door weight approx.	30 kg
--------------------------	-------



2095..

Ø 50 mm with fixing material

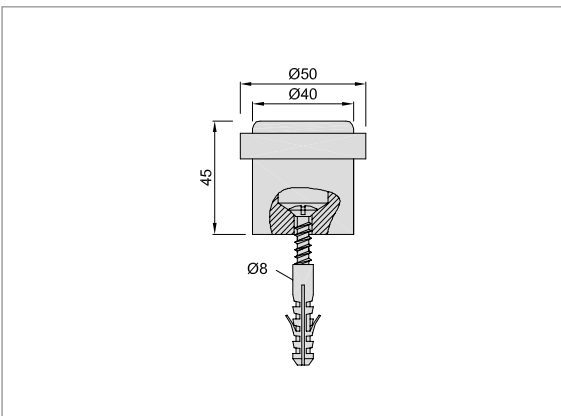
2096..

Ø 50 mm without fixing material

with black rubber ring

Mounting

Remove end cap, screw the door stop on the floor at the greatest possible distance from the door hinge, put on the end cap again and secure with clamp screw.



Standard design

aluminium	
coloured plastic-coated	.70

aluminium machined according to E 5

KWS 1 silver anodised	.31
KWS 2 nickel silver anodised	.32
KWS 3 gold anodised	.33
KWS 5 dark bronze anodised	.37

brass

brushed and lacquered	.62
nickel plated	.63
polished and lacquered	.66

stainless steel

brushed	.82
polished	.83

unit	5 pieces
------	----------

Piece weight

aluminium	0.145 kg
brass	0.400 kg
stainless steel	0.370 kg

Application

max. door weight approx.	50 kg
--------------------------	-------

Order example

Piece	Part no.	Finish no.
... Piece	2097	.83

Standard design

aluminium	
coloured plastic-coated	.70

aluminium machined according to E 5

KWS 1 silver anodised	.31
KWS 2 nickel silver anodised	.32
KWS 3 gold anodised	.33
KWS 5 dark bronze anodised	.37

brass

brushed and lacquered	.62
nickel plated	.63
polished and lacquered	.66

stainless steel

brushed	.82
polished	.83

unit	5 pieces
------	----------

Piece weight

aluminium	0.100 kg
brass	0.280 kg
stainless steel	0.260 kg

Application

max. door weight approx.	50 kg
--------------------------	-------

2093..

Ø 50 mm with fixing material

2094..

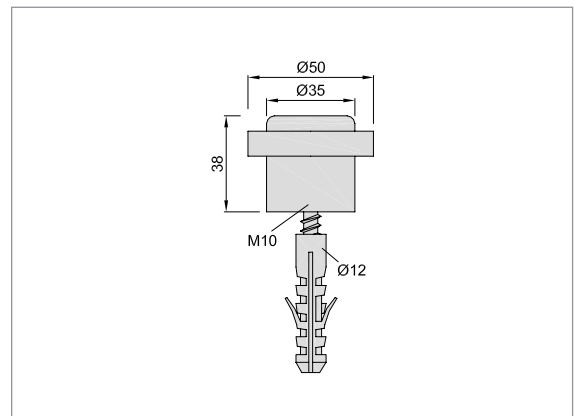
Ø 50 mm without fixing material

with black rubber ring

with female thread for screwing on

Mounting

Door stop is mounted on the floor by means of stair bolt and plug at the greatest possible distance from the door hinge.



Standard design

aluminium machined according to E 5	
KWS 1 silver anodised	.31
KWS 2 nickel silver anodised	.32
KWS 3 gold anodised	.33
KWS 5 dark bronze anodised	.37

brass

brushed and lacquered	.62
polished and lacquered	.66

stainless steel

brushed	.82
polished	.83

unit	5 pieces
------	----------

Piece weight

aluminium	0.104 kg
brass	0.180 kg
stainless steel	0.160 kg

Application

max. door weight approx.	50 kg
--------------------------	-------

2053..

Ø 42 mm with fixing material

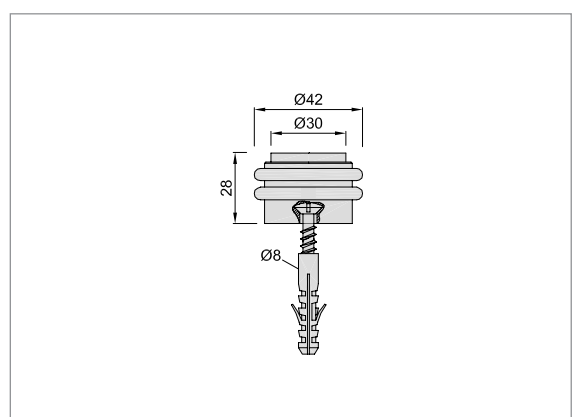
2054..

Ø 42 mm without fixing material

with black rubber buffer and 2 black rubber rings

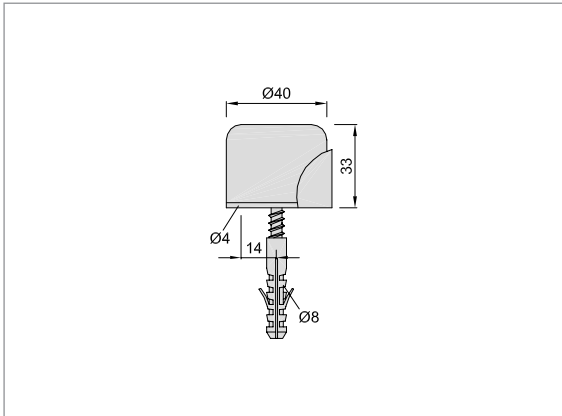
Mounting

Remove rubber buffer and screw stop to the floor or the wall and press in rubber buffer.



Order example

Piece	Part no.	Finish no.
... Piece	2093	.31



2015..

Ø 40 mm with fixing material

2017..

Ø 40 mm without fixing material

Buffer cap pressed with black rubber buffer

rubber buffer also available in white or grey

Mounting

The door stop is screwed on the floor at the greatest possible distance from the door hinge. The turning of the buffer is prevented by fixing an additional screw through the buffer cap.



Standard design

steel	
silver stove enamelled	.02
black stove enamelled	.03
electro-galvanised	.06
dark brown stove enamelled	.10
coloured plastic-coated	.70

aluminium machined according to E 5

KWS 1 silver anodised	.31
KWS 2 nickel silver anodised	.32
KWS 3 gold anodised	.33
KWS 5 dark bronze anodised	.37

brass

brushed and lacquered	.62
polished and lacquered	.66

stainless steel

brushed	.82
polished	.83

unit	20 pieces
------	-----------

Piece weight

steel	2015..	0.095 kg
aluminium	2015..	0.075 kg
brass	2015..	0.100 kg
stainless steel	2015..	0.095 kg

Application

max. door weight approx.	25 kg
--------------------------	-------

Order example

Piece	Part no.	Finish no.
... Piece	2015	.10

Standard design

steel	
silver stove enamelled	.02
black stove enamelled	.03
electro-galvanised	.06
dark brown stove enamelled	.10
coloured plastic-coated	.70

aluminium machined according to E 5

KWS 1 silver anodised	.31
KWS 2 nickel silver anodised	.32
KWS 3 gold anodised	.33
KWS 5 dark bronze anodised	.37

brass

brushed and lacquered	.62
polished and lacquered	.66

stainless steel

brushed	.82
polished	.83

unit	20 pieces
------	-----------

Piece weight

steel	2016..	0.055 kg
aluminium	2016..	0.045 kg
brass	2016..	0.060 kg
stainless steel	2016..	0.055 kg

Application

max. door weight approx.	25 kg
--------------------------	-------

2016..

Ø 30 mm with fixing material

2018..

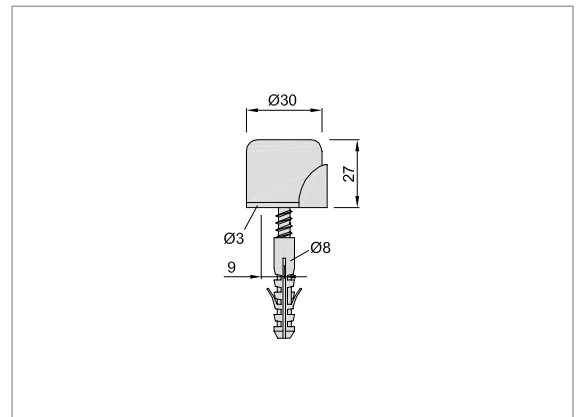
Ø 30 mm without fixing material

Buffer cap pressed with black rubber buffer

rubber buffer also available in white or grey

Mounting

The door stop is screwed on the floor at the greatest possible distance from the door hinge. The turning of the buffer is prevented by fixing an additional screw through the buffer cap.



Order example

Piece	Part no.	Finish no.
... Piece	2016	.06



2022..

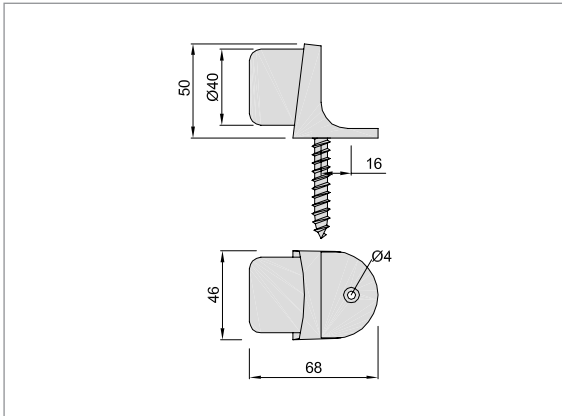
with stair bolt for screwing on

with black rubber stop

rubber buffer also available in white or grey

Mounting

The door stop is screwed on the floor at the greatest possible distance from the door hinge. The turning of the buffer is prevented by fixing an additional screw through the buffer cap.



Standard design

aluminium	
silver stove enamelled	.02
black stove enamelled	.03
dark brown stove enamelled	.10
coloured plastic-coated	.70

aluminium machined according to E 5

KWS 1 silver anodised	.31
KWS 2 nickel silver anodised	.32
KWS 3 gold anodised	.33
KWS 5 dark bronze anodised	.37

brass

brushed and lacquered	.62
polished and lacquered	.66

unit	10 pieces
------	-----------

Piece weight

aluminium	0.150 kg
brass	0.250 kg

Application

max. door weight approx.	40 kg
--------------------------	-------



2028..

with fixing material

2528..

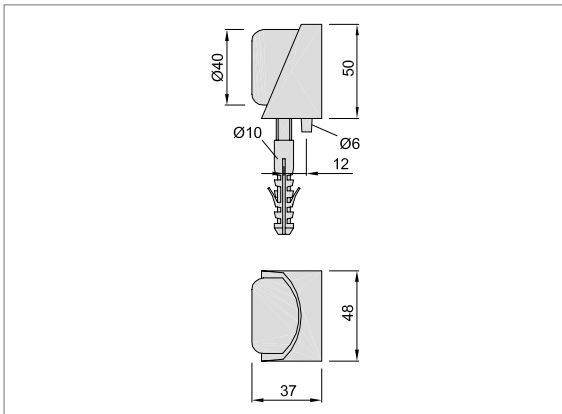
without fixing material

with black rubber stop

rubber buffer also available in white or grey

Mounting

The door stop is screwed on the floor at the greatest possible distance from the door hinge. The pin that is to be inserted into the floor prevents the turning of the door stop.



Standard design

aluminium	
silver stove enamelled	.02
black stove enamelled	.03
dark brown stove enamelled	.10
coloured plastic-coated	.70

aluminium machined according to E 5

KWS 1 silver anodised	.31
KWS 2 nickel silver anodised	.32
KWS 3 gold anodised	.33
KWS 5 dark bronze anodised	.37

unit	10 pieces
------	-----------

Piece weight

aluminium 2028..	0.160 kg
------------------	----------

Application

max. door weight approx.	30 kg
--------------------------	-------

Order example

Piece	Part no.	Finish no.
... Piece	2022	.03

Standard design

aluminium	
coloured plastic-coated	.70

aluminium machined according to E 5

KWS 1 silver anodised	.31
KWS 2 nickel silver anodised	.32
KWS 3 gold anodised	.33
KWS 5 dark bronze anodised	.37

unit	10 pieces
------	-----------

Piece weight

aluminium 2013..	0.090 kg
-------------------------	----------

Application

max. door weight approx.	30 kg
--------------------------	-------

2013..

with fixing material

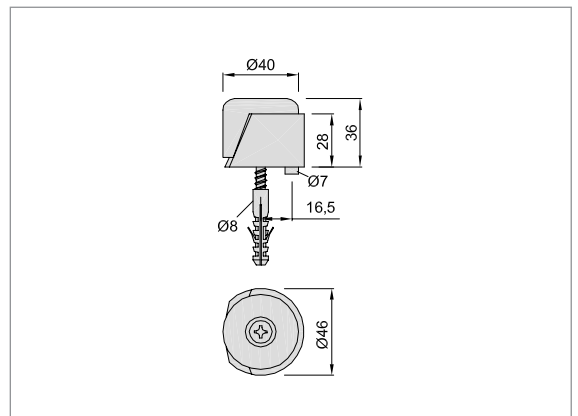
2513..

without fixing material

with black rubber stop
rubber buffer also available in white or grey

Mounting

The door stop is screwed on the floor at the greatest possible distance from the door hinge. The locating pin prevents the door stop from turning.



Standard design

aluminium	
coloured plastic-coated	.70

aluminium machined according to E 5

KWS 1 silver anodised	.31
KWS 2 nickel silver anodised	.32
KWS 3 gold anodised	.33
KWS 5 dark bronze anodised	.37

unit	10 pieces
------	-----------

Piece weight

aluminium 2031..	0.150 kg
-------------------------	----------

Application

max. door weight approx.	40 kg
--------------------------	-------

2031..

with fixing material

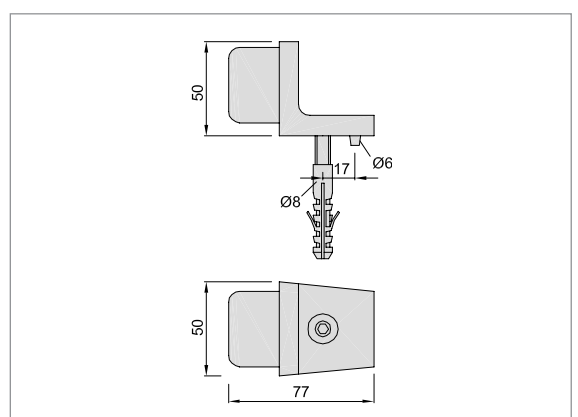
2032..

without fixing material

with black rubber stop
rubber buffer also available in white or grey

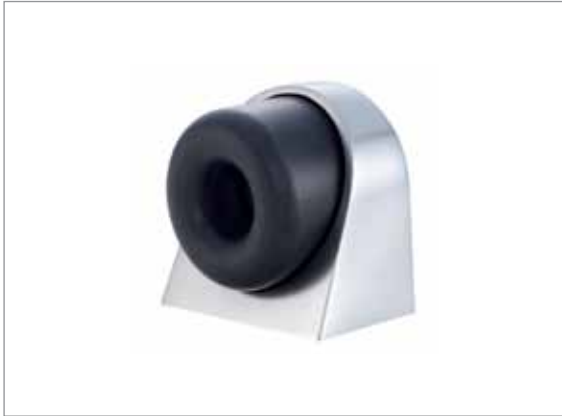
Mounting

The door stop is screwed on the floor at the greatest possible distance from the door hinge. An additional pin moulded on the buffer housing prevents the floor block from turning.



Order example

Piece	Part no.	Finish no.
... Piece	2013	.31



2029..

with fixing material

2529..

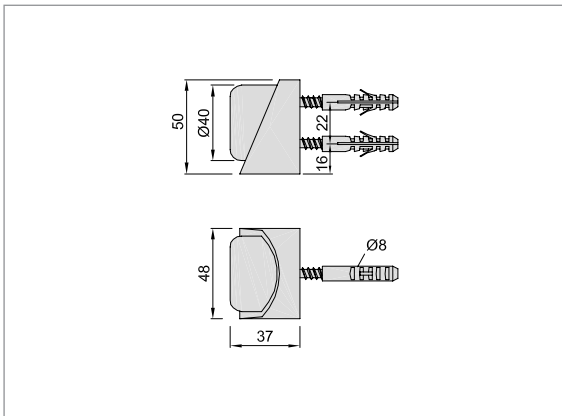
without fixing material

with black rubber stop

rubber buffer also available in white or grey

Mounting

The buffer is removed. The housing is then positioned as far from the hinge end of the door as possible in the 90° angle between the floor and the wall. It is then screwed in place and the buffer replaced.



Standard design

aluminium	
silver stove enamelled	.02
black stove enamelled	.03
dark brown stove enamelled	.10
coloured plastic-coated	.70

aluminium machined according to E 5

KWS 1 silver anodised	.31
KWS 2 nickel silver anodised	.32
KWS 3 gold anodised	.33
KWS 5 dark bronze anodised	.37

unit	10 pieces
------	-----------

Piece weight

aluminium 2029..	0.160 kg
------------------	----------

Application

max. door weight approx.	30 kg
--------------------------	-------



2006..

with fixing material

2506..

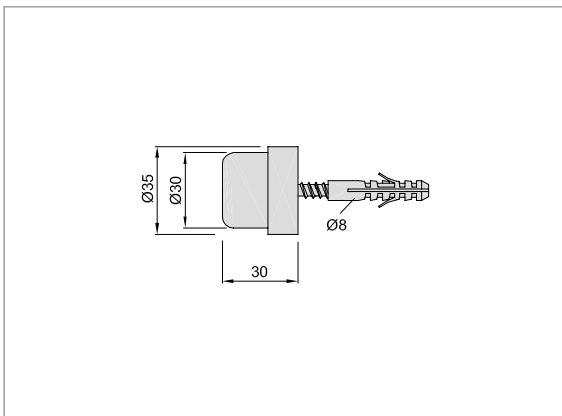
without fixing material

with black rubber buffer

rubber buffer also available in white or grey

Mounting

The door holder is screwed on the wall at the greatest possible distance from the door hinge.



Standard design

aluminium	
coloured plastic-coated	.70

aluminium machined according to E 5

KWS 1 silver anodised	.31
KWS 2 nickel silver anodised	.32
KWS 3 gold anodised	.33
KWS 5 dark bronze anodised	.37

brass

brushed and lacquered	.62
polished and lacquered	.66

unit	20 pieces
------	-----------

Piece weight

aluminium 2006..	0.055 kg
brass 2006..	0.085 kg

Application

max. door weight approx.	80 kg
--------------------------	-------

Order example

Piece	Part no.	Finish no.
... Piece	2029	.03

Standard design

aluminium	
coloured plastic-coated	.70

aluminium machined according to E 5

KWS 1 silver anodised	.31
KWS 2 nickel silver anodised	.32
KWS 3 gold anodised	.33
KWS 5 dark bronze anodised	.37

brass

brushed and lacquered	.62
polished and lacquered	.66

stainless steel

brushed	.82
polished	.83

unit	20 pieces
------	-----------

Piece weight

aluminium	2008..	0.035 kg
brass	2008..	0.070 kg
stainless steel	2008..	0.060 kg

Application

max. door weight approx.	80 kg
--------------------------	-------

2008..

with fixing material

2408..

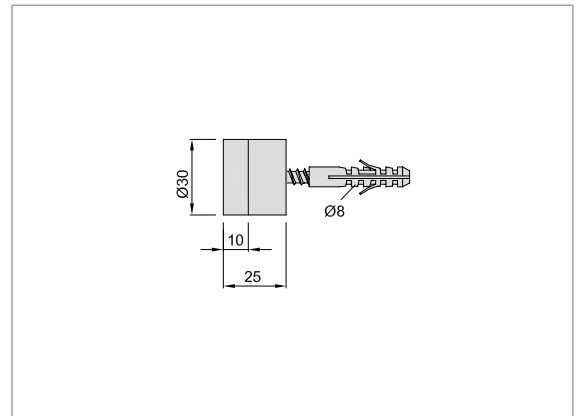
without fixing material

of aluminium, brass or stainless steel with black rubber buffer

rubber buffer also available in white

Mounting

Screw the buffer cap on the wall and press in buffer.



Standard design

aluminium	
coloured plastic-coated	.70

aluminium machined according to E 5

KWS 1 silver anodised	.31
KWS 2 nickel silver anodised	.32
KWS 3 gold anodised	.33
KWS 5 dark bronze anodised	.37

brass

brushed and lacquered	.62
polished and lacquered	.66

stainless steel

brushed	.82
polished	.83

unit	20 pieces
------	-----------

Piece weight

aluminium	2007..	0.050 kg
brass	2007..	0.115 kg
stainless steel	2007..	0.100 kg

Application

max. door weight approx.	80 kg
--------------------------	-------

2007..

with fixing material

2407..

without fixing material

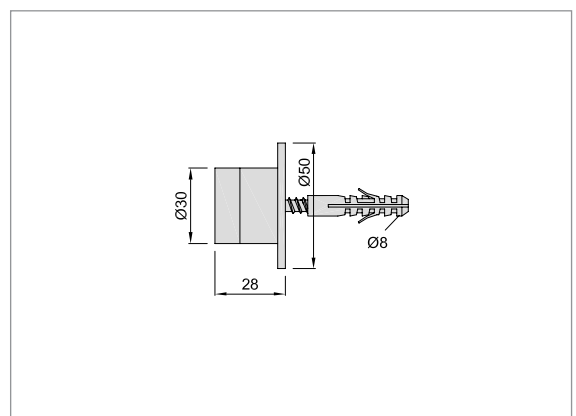
on loose collar Ø 50 mm

of aluminium, brass or stainless steel with black rubber buffer

rubber buffer also available in white

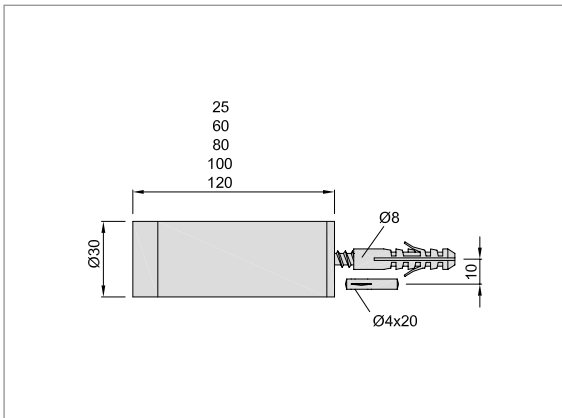
Mounting

Screw the buffer cap with collar on the wall and press in buffer.



Order example

Piece	Part no.	Finish no.
... Piece	2008	.33



2068..

25 mm
with fixing material

2568..

25 mm
without fixing material

2070..

60 mm
with fixing material

2570..

60 mm
without fixing material

2071..

80 mm
with fixing material

2571..

80 mm
without fixing material

2072..

100 mm
with fixing material

2572..

100 mm
without fixing material

2073..

120 mm
with fixing material

2573..

120 mm
without fixing material

of aluminium, brass or stainless steel with firmly inserted black rubber buffer

rubber buffer also available in white

Mounting

Screw the fixing element of the door stop on the wall, put on buffer tube with firmly inserted buffer and screw in clamp screw.

This door stop can also be manufactured in overlengths.

Standard design

aluminium	
coloured plastic-coated	.70

aluminium machined according to E 5

KWS 1 silver anodised	.31
KWS 2 nickel silver anodised	.32
KWS 3 gold anodised	.33
KWS 5 dark bronze anodised	.37

brass

brushed and lacquered	.62
polished and lacquered	.66

stainless steel

brushed	.82
polished	.83

unit	10 pieces
------	-----------

Piece weight

aluminium	2068..	0.040 kg
brass	2068..	0.060 kg
stainless steel	2068..	0.060 kg

Application

max. door weight approx.	40 kg
--------------------------	-------



Order example

Piece	Part no.	Finish no.
... Piece	2068	.32

Standard design

aluminium	
coloured plastic-coated	.70

aluminium machined according to E 5

KWS 1 silver anodised	.31
KWS 2 nickel silver anodised	.32
KWS 3 gold anodised	.33
KWS 5 dark bronze anodised	.37

brass

brushed and lacquered	.62
polished and lacquered	.66

stainless steel

brushed	.82
polished	.83

unit	10 pieces
------	-----------

Piece weight

aluminium	2069..	0.045 kg
brass	2069..	0.085 kg
stainless steel	2069..	0.085 kg

Application

max. door weight approx.	40 kg
--------------------------	-------



2069..

28 mm
with fixing material

2569..

28 mm
without fixing material

2074..

60 mm
with fixing material

2574..

60 mm
without fixing material

2075..

80 mm
with fixing material

2575..

80 mm
without fixing material

2076..

100 mm
with fixing material

2576..

100 mm
without fixing material

2077..

120 mm
with fixing material

2577..

120 mm
without fixing material

with collar Ø 50 mm

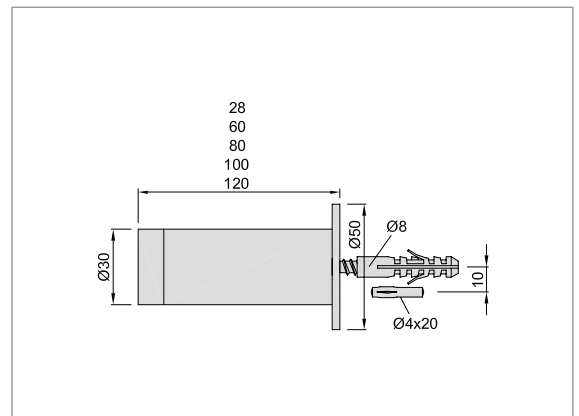
of lightmetal, brass or stainless steel with firmly inserted buffer of rubber, black

rubber buffer also available in white

Mounting

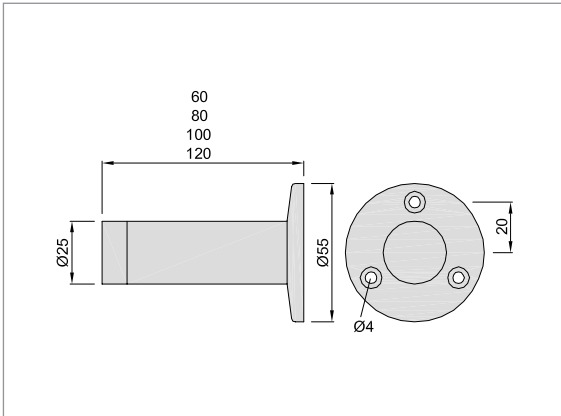
Screw the fixing element of the door stop on the wall, put on buffer tube with firmly inserted buffer and screw in clamp screw.

This door stop can also be manufactured in overlengths.



Order example

Piece	Part no.	Finish no.
... Piece	2575	.66



2009..

60 mm without fixing material

2010..

80 mm without fixing material

2011..

100 mm without fixing material

2012..

120 mm without fixing material

of steel, brass or stainless steel with buffer of rubber, grey

Mounting

The door stop is screwed on the wall with three screws at the greatest possible distance from the door hinge.

This door stop can also be manufactured in overlengths.

Standard design

steel	
silver stove enamelled	.02
black stove enamelled	.03
dark brown stove enamelled	.10
coloured plastic-coated	.70

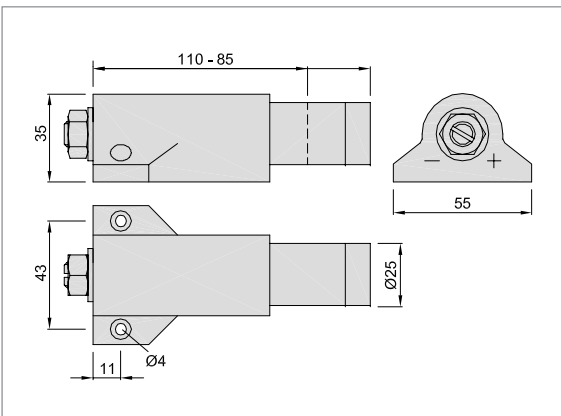
brass	
brushed and lacquered	.62
polished and lacquered	.66

stainless steel	
brushed	.82
polished	.83

unit	6 pieces
------	----------

Piece weight		
steel	2009..	0.085 kg
brass	2009..	0.100 kg
stainless steel	2009..	0.085 kg

Application	
max. door weight approx.	25 kg



2014..

door stop without fixing material

of aluminium Buffer shaft of brass, spring-loaded buffer of rubber, grey

Mounting

The door stop is screwed on the wall with two screws at the greatest possible distance from the door hinge. The spring pressure is adjustable by an adjusting screw.

Standard design

aluminium	
coloured plastic-coated	.70

aluminium machined according to E 5	
KWS 1 silver anodised	.31
KWS 2 nickel silver anodised	.32
KWS 3 gold anodised	.33
KWS 5 dark bronze anodised	.37

unit	2 pieces
------	----------

Piece weight	
aluminium	0.210 kg

Application	
max. door weight approx.	30 kg

Order example

Piece	Part no.	Finish no.
... Piece	2009	.03



Standard design

aluminium	
silver stove enamelled	.02
black stove enamelled	.03
dark brown stove enamelled	.10
coloured plastic-coated	.70

aluminium machined according to E 5

KWS 1 silver anodised	.31
KWS 2 nickel silver anodised	.32
KWS 3 gold anodised	.33
KWS 5 dark bronze anodised	.37

unit	10 pieces
------	-----------

Piece weight

aluminium 2033..	0.100 kg
------------------	----------

Application

max. door weight approx.	40 kg
--------------------------	-------

Mounting

Screw the fixing element of the door stop on the wall at the greatest possible distance from the door hinge, put on buffer housing and screw in clamp screw. The pin moulded on the fixing element is inserted in the wall and prevents the stop from turning.

2033..

80 mm with fixing material

2034..

80 mm without fixing material

2035..

100 mm with fixing material

2036..

100 mm without fixing material

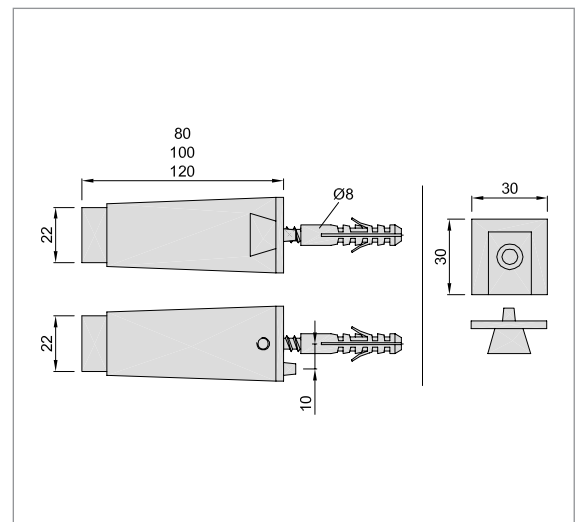
2037..

120 mm with fixing material

2038..

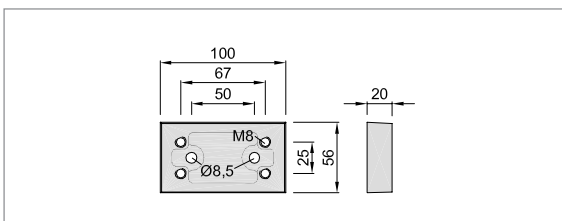
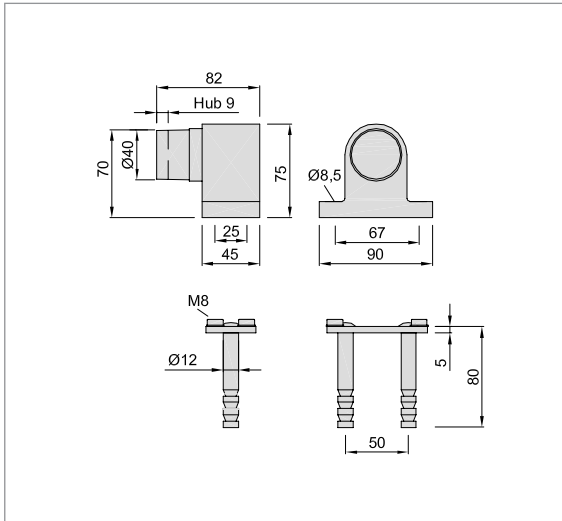
120 mm without fixing material

of lightmetal,
buffer of rubber, white



Order example

Piece	Part no.	Finish no.
... Piece	2033	.03



2023..

with anchor bolt for casting in

2024..

without anchor bolt for screwing on

of aluminium, brass or stainless steel with spring-loaded buffer of rubber, black

anchor bolt hot-dip galvanised stainless steel

Mounting

With anchor bolt: Put the provided anchor bolt in the floor and grout it at the desired point which should be the greatest possible distance from the door hinge. After the grouting material has hardened, screw on the door stop.

Without anchor bolt: Screw the door stop on the floor with four screws and inserted plugs at the desired point which should be the greatest possible distance from the door hinge.

Accessories

For height compensation we recommend the additional use of the shim **1610..** (20 mm).



Standard design

aluminium	
silver stove enamelled	.02
black stove enamelled	.03
dark brown stove enamelled	.10
coloured plastic-coated	.70

aluminium machined according to E 5

KWS 1 silver anodised	.31
KWS 2 nickel silver anodised	.32
KWS 3 gold anodised	.33
brushed stainless steel effect anodised	.35
KWS 5 dark bronze anodised	.37

brass

brushed and lacquered	.62
nickel plated	.63
polished and lacquered	.66

stainless steel

brushed	.82
polished	.83

unit	1 piece
------	---------

Piece weight

aluminium	2023..	0.670 kg
	2024..	0.380 kg
brass	2023..	0.940 kg
	2024..	0.650 kg
stainless steel	2023..	0.910 kg
	2024..	0.680 kg

Application

max. door weight approx.	100 kg
--------------------------	--------

1610..

shim 20 mm high

Standard design

aluminium	
coloured plastic-coated	.70
black	RAL 9011

unit	1 piece
------	---------

Piece weight

aluminium	0.300 kg
-----------	----------

Order example

Piece	Part no.	Finish no.
... Piece	2023	.66



Standard design

aluminium

silver stove enamelled	.02
black stove enamelled	.03
dark brown stove enamelled	.10
coloured plastic-coated	.70

aluminium machined according to E 5

KWS 1 silver anodised	.31
KWS 2 nickel silver anodised	.32
KWS 3 gold anodised	.33
brushed stainless steel effect anodised	.35
KWS 5 dark bronze anodised	.37

unit	1 piece
------	---------

Piece weight

aluminium	0.400 kg
-----------	----------

Application

max. door weight approx.	120 kg
--------------------------	--------

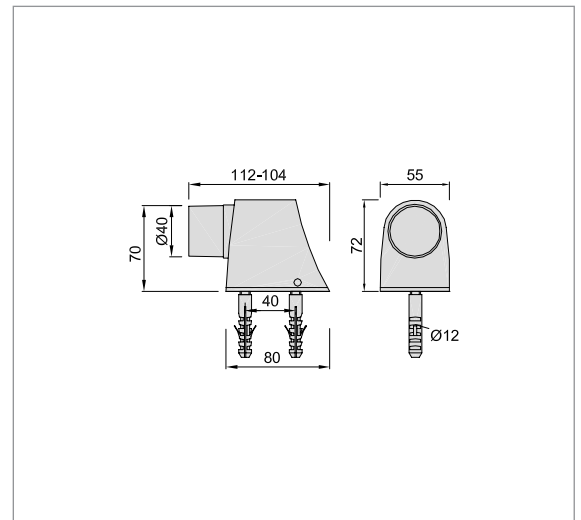
2124..

with mounting plate and fixing material

of aluminium with spring-loaded buffer of rubber, black

Mounting

Screw the stop mounting plate on the floor with two screws and inserted plugs at the desired point which should be at the greatest possible distance from the door hinge. Then put on the door stop and fix it with the two screws on the side onto the base plate.



Order example

Piece	Part no.	Finish no.
... Piece	2124	.03



2110..

with fixing material

2111..

without fixing material

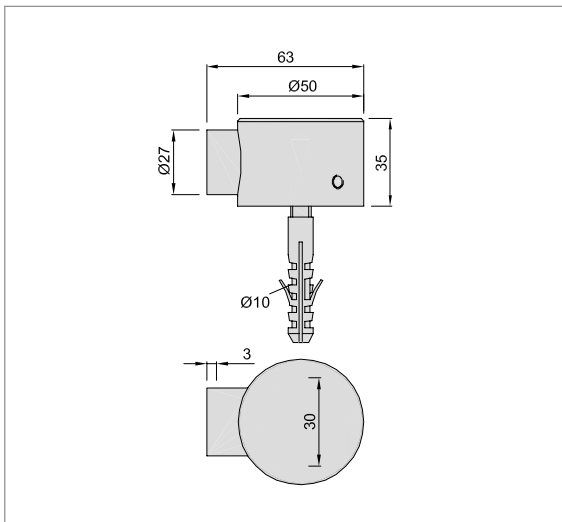
of aluminium, brass and stainless steel, grub screws of stainless steel with spring-loaded buffer, black

Mounting

Two plugs are inserted into the floor at the desired arresting position which should be at the greatest possible distance from the door hinge, the grub screws are inserted, the door stop put on and fixed with two grub screws on the side.

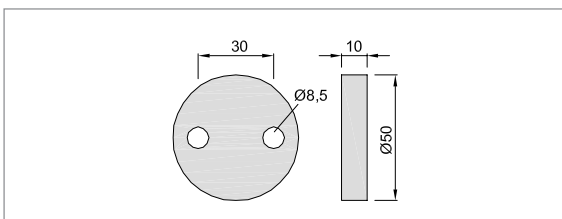
Accessories

For height compensation we recommend the additional use of the shim **1615..** (10 mm).



1615..

shim 10 mm high



Standard design

aluminium

silver stove enamelled	.02
coloured plastic-coated	.70

aluminium machined according to E 5

KWS 1 silver anodised	.31
KWS 2 nickel silver anodised	.32
KWS 3 gold anodised	.33
KWS 5 dark bronze anodised	.37

brass

brushed and lacquered	.62
polished and lacquered	.66

stainless steel

brushed	.82
polished	.83

unit	1 piece
------	---------

Piece weight

aluminium	0.200 kg
brass	0.550 kg
stainless steel	0.500 kg

Application

max. door weight approx.	75 kg
--------------------------	-------

Standard design

aluminium

coloured plastic-coated	.70
black	RAL 9011

unit	1 piece
------	---------

Piece weight

aluminium	0.050 kg
-----------	----------

Order example

Piece	Part no.	Finish no.
... Piece	2110	.31



Standard design

aluminium	
coloured plastic-coated	.70

aluminium machined according to E 5

KWS 1 silver anodised	.31
KWS 2 nickel silver anodised	.32
KWS 3 gold anodised	.33
KWS 5 dark bronze anodised	.37

brass

brushed and lacquered	.62
polished and lacquered	.66

stainless steel

brushed	.82
polished	.83

unit	1 piece
------	---------

Piece weight

aluminium	2064..	0.150 kg
brass	2064..	0.245 kg
stainless steel	2064..	0.230 kg

Application

max. door weight approx.	75 kg
--------------------------	-------

2064..

80 mm
with fixing material

2065..

100 mm
with fixing material

2066..

120 mm
with fixing material

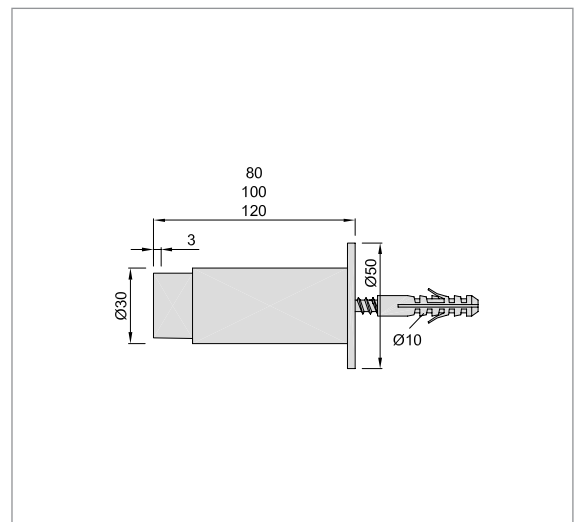
of aluminium, brass and stainless steel with spring-loaded buffer of rubber, black

Mounting

Screw on the fixing element at the desired position. Put on the door stop and fix it with the clamp screw.

Note:

For optimum life the door leaf has to hit the buffer rubber evenly.



Order example

Piece	Part no.	Finish no.
... Piece	2064	.31



2049..

with fixing material

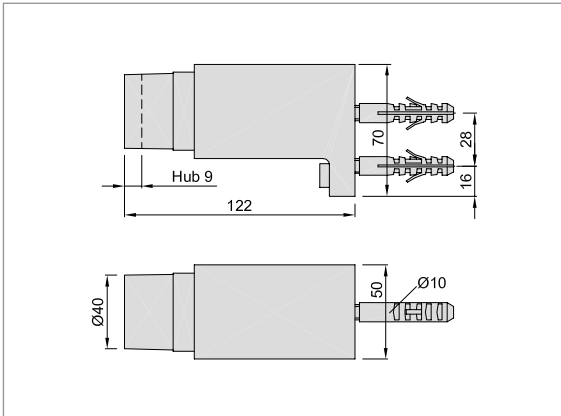
2050..

without fixing material

of aluminium or brass with spring-loaded buffer of rubber, black

Mounting

The mounting plate is screwed with two screws in combination with plugs on the wall at the greatest possible distance from the door hinge, the door stop is put on and fastened with two screws.



Standard design

aluminium	
silver stove enamelled	.02
black stove enamelled	.03
dark brown stove enamelled	.10
coloured plastic-coated	.70

aluminium machined according to E 5

KWS 1 silver anodised	.31
KWS 2 nickel silver anodised	.32
KWS 3 gold anodised	.33
brushed stainless steel effect anodised	.35
KWS 5 dark bronze anodised	.37

unit	1 piece
------	---------

Piece weight

aluminium	0.520 kg
-----------	----------

Application

max. door weight approx.	100 kg
--------------------------	--------



2051..

with fixing material

2052..

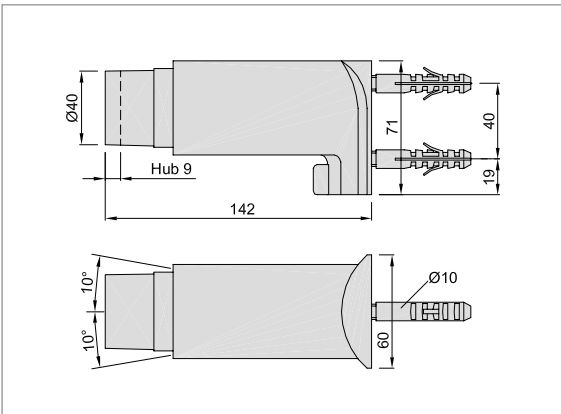
without fixing material

of aluminium with spring-loaded buffer of rubber, black

adjustable to the right and left up to 10°

Mounting

Screw the fixing element with inserted steel bracket on the wall in combination with plugs at the greatest possible distance from the door hinge, put on the door buffer element, incline it as desired (when opening the door it is to hit the holder at an angle of 90°) and secure it with a screw.



Standard design

aluminium	
silver stove enamelled	.02
black stove enamelled	.03
dark brown stove enamelled	.10
coloured plastic-coated	.70

aluminium machined according to E 5

KWS 1 silver anodised	.31
KWS 2 nickel silver anodised	.32
KWS 3 gold anodised	.33
brushed stainless steel effect anodised	.35
KWS 5 dark bronze anodised	.37

unit	1 piece
------	---------

Piece weight

aluminium	0.570 kg
-----------	----------

Application

max. door weight approx.	100 kg
--------------------------	--------

Order example

Piece	Part no.	Finish no.
... Piece	2049	.02

Standard design

steel	
silver stove enamelled	.02
black stove enamelled	.03
electro-galvanised	.06
dark brown stove enamelled	.10
coloured plastic-coated	.70
unit	1 piece

Piece weight

steel	0.800 kg
-------	----------

Application

max. door weight approx.	200 kg
--------------------------	--------

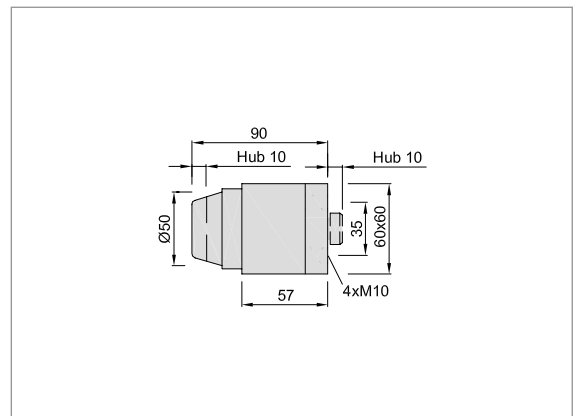
2020..

with four threaded blind holes for screwing on from the back

of steel with spring-loaded buffer of rubber, black

Mounting

The door stop is fastened with four screws M10 through threaded blind holes on the back or welded on. During mounting please consider that the buffer shaft protrudes approx. 10 mm at the back (spring system of the buffer).



Standard design

steel/aluminium	
silver stove enamelled	.02
black stove enamelled	.03
dark brown stove enamelled	.10
coloured plastic-coated	.70

stainless steel

brushed	.82
polished	.83
unit	1 piece

Piece weight

steel	0.620 kg
stainless steel	0.820 kg

Application

max. door weight approx.	200 kg
--------------------------	--------

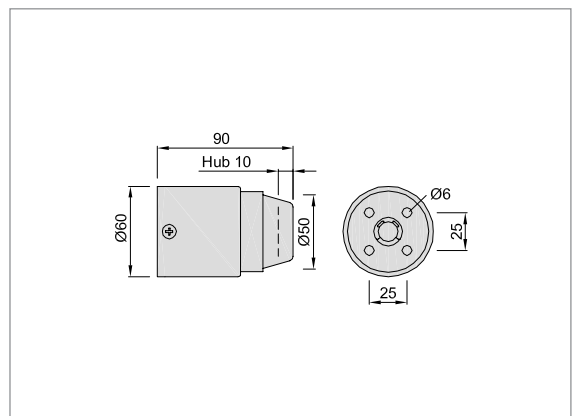
2120..

with four screw holes for screwing on from the front side of the stop

of steel/lightmetal or stainless steel, with spring-loaded buffer of rubber, black

Mounting

The fixing element is screwed on, the buffer housing put on and secured with two screws. In case of this door stop, in contrast to 2020.. the buffer shaft does not protrude at the back, as the buffer travel of 10 mm is within the housing (facilitation of mounting).



Order example

Piece	Part no.	Finish no.
... Piece	2020	.02



2019..

with stone anchor for casting in
of steel with spring-loaded buffer
of rubber, black

Mounting

The door stop is inserted in the
floor at the greatest possible
distance from the door hinge
(minimum depth 100 mm).

Standard design

steel	
silver stove enamelled	.02
black stove enamelled	.03
electro-galvanised	.06
dark brown stove enamelled	.10
coloured plastic-coated	.70

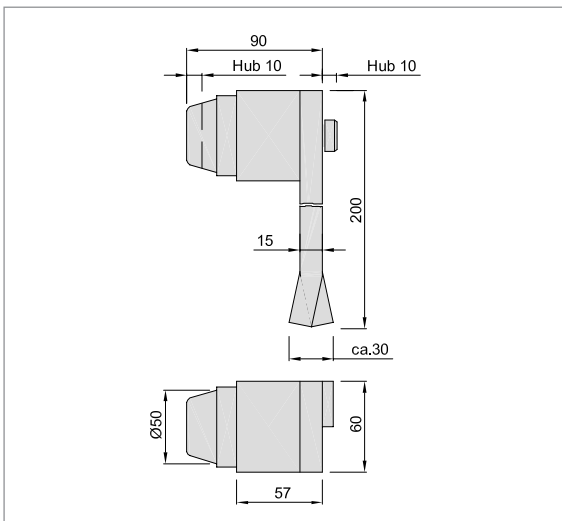
unit	1 piece
------	---------

Piece weight

steel	1.800 kg
-------	----------

Application

max. door weight approx.	200 kg
--------------------------	--------



Order example

Piece	Part no.	Finish no.
... Piece	2019	.10



Standard design

steel	
silver stove enamelled	.02
black stove enamelled	.03
electro-galvanised	.06
dark brown stove enamelled	.10
coloured plastic-coated	.70

stainless steel

brushed	.82
---------	-----

unit	1 piece
------	---------

Piece weight

steel	1.850 kg
stainless steel	1.850 kg

Application

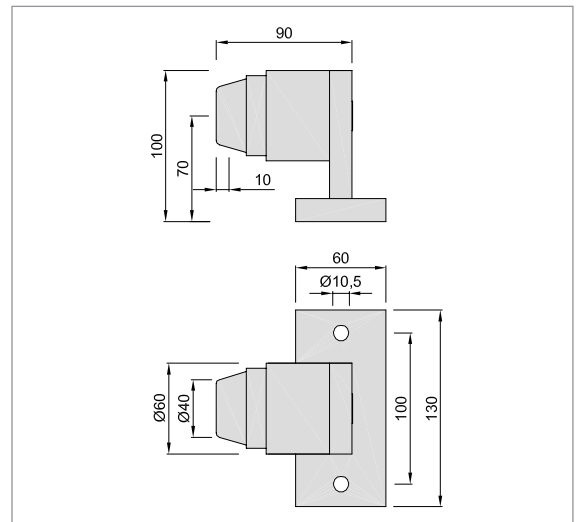
max. door weight approx.	200 kg
--------------------------	--------

2021..

for screwing on
of steel with spring-loaded buffer
of rubber, black

Mounting

The door stop is screwed on the
floor at the greatest possible dis-
tance from the door hinge.



Order example

Piece	Part no.	Finish no.
... Piece	2021	.02



General Information

KWS products last long, but not forever. This is why we show you on the following pages which spare parts you can reorder and replace.

In addition, we offer you fixing materials as accessories as far as they are not included in the scope of supply by default.

Standard design

see 1013.. 1014.. and 1113.. 1114..

pages 14 and 15

unit	1 piece
------	---------

Piece weight

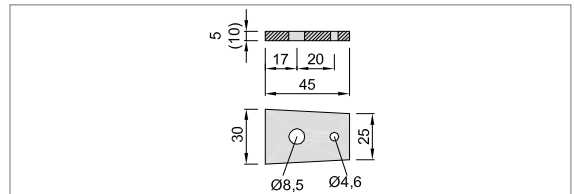
aluminium	0.015 kg
brass	0.045 kg

1555..

shim 5 mm high

1556..

shim 10 mm high



Standard design

aluminium

coloured plastic-coated	.70
black	RAL 9011

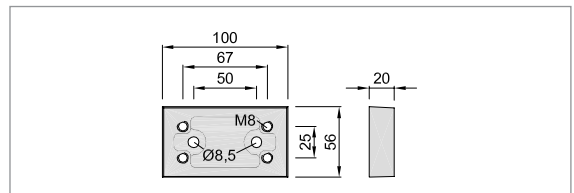
unit	1 piece
------	---------

Piece weight

aluminium	0.300 kg
-----------	----------

1610..

shim 20 mm high



Standard design

aluminium

coloured plastic-coated	.70
black	RAL 9011

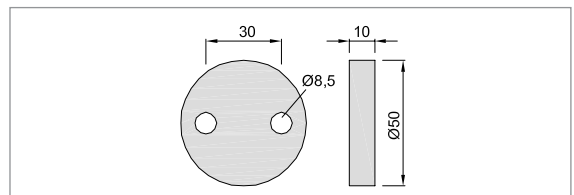
unit	1 piece
------	---------

Piece weight

aluminium	0.050 kg
-----------	----------

1615..

shim 10 mm high



Standard design

aluminium

coloured plastic-coated	.70
black	RAL 9011

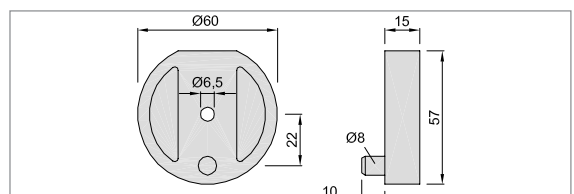
unit	1 piece
------	---------

Piece weight

aluminium	0.055 kg
-----------	----------

2559..

shim 15 mm high





1557..

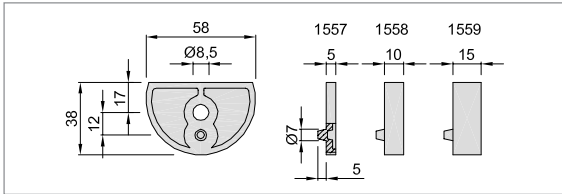
shim 5 mm high

1558..

shim 10 mm high

1559..

shim 15 mm high



Standard design

see **1058.. 1059.. and 2001.. 2002..**

pages 30 and 70

unit	20 pieces
------	-----------

Piece weight

aluminium	1557..	0.018 kg
	1558..	0.031 kg
	1559..	0.040 kg
brass	1557..	0.034 kg
	1558..	0.053 kg
	1559..	0.068 kg
stainless steel	1557..	0.035 kg
	1558..	0.049 kg
	1559..	0.067 kg



9933..

rubber ring, black

for

2053.. 2054..

unit	1 piece
------	---------



2508..

Ø 40 mm buffer cap

2509..

Ø 30 mm buffer cap

Standard design

see **2015.. 2017.. or 2016.. 2018..**

pages 76 and 77

unit	1 piece
------	---------



2517..

Ø 40 mm buffer cap

Standard design

see **2013.. 2513..**

page 79

unit	1 piece
------	---------

Standard design

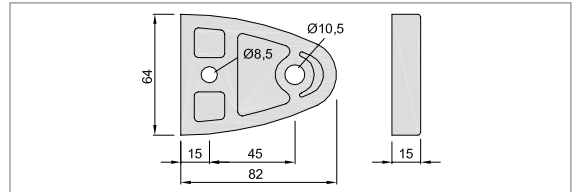
aluminium	
coloured plastic-coated	.70
black	RAL 9011
unit	1 piece

Piece weight

aluminium	0.114 kg
-----------	----------

2590..

shim 15 mm high



for

1006..

9901..

black



for

1223.. 1225.. 1227..

9902..

black, stainless steel



for

1222.. 1224.. 1226..

9908..

black, steel zinc-plated



for

1013.. 1014.. 1023.. 1090.. 1113.. 1114..

9903..

black

for

1024.. 1025..

9905..

grey



for

2003.. 2004..

9906..

black, white



for

1026..-1035.. 1044..-1046.. 1048.. 1081.. 1082.. 1089.. 1093.. 1132.. 1133..

9907..

grey





9910..

black, white, grey

for

2006.. 2016.. 2018.. 2506..



9911..

black

for

1060..

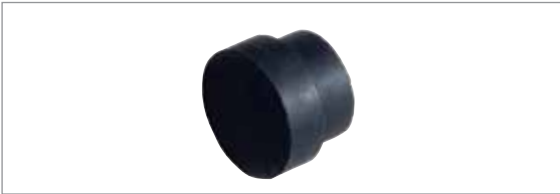


9912..

white

for

1061.. 1062.. 2033..-2038..



9914..

black, white

for

2007.. 2008.. 2053.. 2054.. 2070..-2077.. 2407..
2408.. 2570..-2577..



9915..

grey

for

2009..-2012.. 2014..



9916..

black, white, grey

for

2013.. 2015.. 2017.. 2022.. 2028.. 2029.. 2031..
2032.. 2513.. 2528.. 2529..



9918..

grey

for

1076..



9919..

black

for

2019.. 2020.. 2021.. 2120..

for
1058.. 1059.. 2001LM 2002LM

9920..

black, white



for
2090..-2092..

9923..

black



for
2001ER/MS 2002ER/MS

9924..

black, white



for
2093..-2096..

9925..

black



for
2097.. 2098..

9926..

black



for
2068.. 2069.. 2568.. 2569..

9927..

black, white



for
1043..

9928..

black



for
2080..-2089..

9929..

black





9932..

black incl. pressure spring

for

1009..-1012.. 1051.. 1052.. 1091.. 1092.. 1095..
1096.. 1110.. 2023.. 2024.. 2049..-2052.. 2124..



1507..

roller block
of steel or stainless steel

for

1009..-1012.. 1047.. 1049..-1052.. 1091.. 1092..
1095.. 1096.. 1110..



1508..

anchor bolt
with 4 screws
of steel or stainless steel

for

1009.. 1051.. 1091.. 2023..



1509..

mounting plate
of steel or stainless steel

for

1030..-1037.. 1040..-1042.. 1044..-1046.. 1048..
1081.. 1082.. 1132.. 1133..



1522..

anchor bolt
with 3 screws
of steel

for

1049..



1502..

holding bracket
of steel or stainless steel

for

1301..-1308.. 1311.. 1312.. 1318..



1517..

holding bracket
of steel

for

1315..

Standard design

plastic	.95
---------	-----

9102..

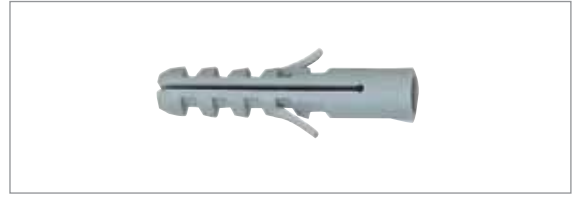
plug M8 - S

9107..

plug S8

9108..

plug S12



Standard design

steel	.06
-------	-----

stainless steel	.80
-----------------	-----



9103..

anchor bolt M10x80



Standard design

steel	.06
-------	-----

stainless steel	.80
-----------------	-----



9104..

stair bolt M10x80 mm

9109..

stair bolt M8x70 mm



Appendix Number List

Article	Page	Article	Page	Article	Page	Article	Page	Article	Page
1002..	10	1067..	55	2001..	70	2086..	73	9102..	101
1004..	11	1068..	56	2002..	70	2087..	73	9103..	101
1005..	12	1072..	56	2003..	71	2088..	73	9104..	101
1006..	13	1073..	29	2004..	71	2089..	73	9107..	101
1009..	21	1076..	31	2006..	80	2090..	72	9108..	101
1010..	21	1081..	40	2007..	81	2091..	72	9109..	101
1011..	24	1082..	40	2008..	81	2092..	72	9901..	97
1012..	24	1083..	50	2009..	84	2093..	75	9902..	97
1013..	14	1089..	36	2010..	84	2094..	75	9903..	97
1014..	14	1090..	16	2011..	84	2095..	74	9905..	97
1015..	18	1091..	23	2012..	84	2096..	74	9906..	97
1016..	18	1092..	23	2013..	79	2097..	74	9907..	97
1017..	57	1093..	36	2014..	84	2098..	74	9908..	97
1018..	19	1095..	25	2015..	76	2110..	88	9910..	98
1019..	17	1096..	25	2016..	77	2111..	88	9911..	98
1020..	17	1110..	20	2017..	76	2120..	91	9912..	98
1023..	16	1113..	15	2018..	77	2124..	87	9914..	98
1024..	32	1114..	15	2019..	92	2407..	81	9915..	98
1025..	33	1132..	42	2020..	91	2408..	81	9916..	98
1026..	34	1133..	43	2021..	93	2506..	80	9918..	98
1027..	36	1163..	52	2022..	78	2508..	96	9919..	98
1028..	34	1165..	54	2023..	86	2509..	96	9920..	99
1029..	36	1167..	55	2024..	86	2513..	79	9923..	99
1030..	38	1173..	29	2028..	78	2517..	96	9924..	99
1031..	40	1222..	46	2029..	80	2528..	78	9925..	99
1032..	38	1223..	46	2031..	79	2529..	80	9926..	99
1033..	40	1224..	46	2032..	79	2559..	71, 95	9927..	99
1034..	38	1225..	46	2033..	85	2568..	82	9928..	99
1035..	40	1226..	46	2034..	85	2569..	83	9929..	99
1036..	39	1227..	46	2035..	85	2570..	82	9932..	100
1037..	41	1301..	58	2036..	85	2571..	82	9933..	96
1038..	35	1302..	59	2037..	85	2572..	82		
1039..	37	1303..	58	2038..	85	2573..	82		
1040..	45	1304..	59	2049..	90	2574..	83		
1041..	45	1305..	58	2050..	90	2575..	83		
1042..	45	1306..	59	2051..	90	2576..	83		
1043..	48	1307..	60	2052..	90	2577..	83		
1044..	44	1308..	60	2053..	75	2590..	72, 97		
1045..	44	1311..	61	2054..	75				
1046..	44	1312..	61	2064..	89				
1047..	26	1315..	62	2065..	89				
1048..	47	1318..	62	2066..	89				
1049..	27	1502..	100	2068..	82				
1050..	27	1507..	100	2069..	83				
1051..	22	1508..	100	2070..	82				
1052..	22	1509..	100	2071..	82				
1055..	50	1517..	100	2072..	82				
1056..	51	1522..	100	2073..	82				
1057..	51	1555..	14, 15, 95	2074..	83				
1058..	30	1556..	14, 15, 95	2075..	83				
1059..	30	1557..	30, 70, 96	2076..	83				
1060..	31	1558..	30, 70, 96	2077..	83				
1061..	28	1559..	30, 70, 96	2080..	73				
1062..	28	1610..	21, 22, 23, 86, 95	2081..	73				
1063..	52	1615..	88, 95	2082..	73				
1064..	53			2083..	73				
1065..	54			2084..	73				
1066..	53			2085..	73				

Short symbols for the finishes of aluminium

material aluminium anodisable surface treatment subsequently anodised and compacted	Short symbol	1 Effect on surface damage (die marks - slight damage) 2 Structure and appearance
ground - brush-finished	E 4	1 up to completely removed 2 evenly dull-bright
ground - polished	E 5	1 to completely removed 2 smooth and highly brilliant to reflecting
chemically pickled	E 6	1 partly to mostly set off 2 variation option from dull to matt gleaming

Finish codes

raw steel, untreated surface	.01
silver stove enamelled	.02
black stove enamelled	.03
gold stove enamelled	.04
electro-galvanised	.06
hot galvanised	.07
dark brown stove enamelled	.10
special stove enamelled finish	.19

Aluminium E 4

natural finish, surface untreated	.20
ground and brushed	.21
KWS 1 silver anodised	.22
KWS 2 nickel silver anodised	.23
KWS 3 gold anodised	.24
special anodised colour	.26
KWS 4 light bronze anodised	.27
KWS 5 dark bronze anodised	.28
KWS 6 black anodised	.29

Aluminium E 5

natural finish, ground and polished	.30
KWS 1 silver anodised	.31
KWS 2 nickel silver anodised	.32
KWS 3 gold anodised	.33
brushed stainless steel effect anodised	.35
KWS 4 light bronze anodised	.36
KWS 5 dark bronze anodised	.37
KWS 6 black anodised	.38
special anodised colour	.39

Aluminium E 6

natural finish, chemical dipped	.40
KWS 1 silver anodised	.41
KWS 2 nickel silver anodised	.42
KWS 3 gold anodised	.43
KWS 4 light bronze anodised	.46
KWS 5 dark bronze anodised	.47
KWS 6 black anodised	.48
special anodised colour	.49

Brass

natural finish	.60
brushed and waxed	.61
brushed and lacquered	.62
nickel plated	.63
polished and waxed	.65
polished and lacquered	.66

Plastic coated colours

	.70
golden yellow	RAL 1004
flame red	RAL 3000
ruby red (.76)	RAL 3003
wine red	RAL 3005
sapphire blue (.75)	RAL 5003
brilliant blue	RAL 5007
azure blue	RAL 5009
leaf green	RAL 6002
moss green	RAL 6005
olive drab	RAL 6022
stone grey	RAL 7030
sepia brown	RAL 8014
mahogany brown	RAL 8016
dark brown (.74)	RAL 8077
grey white	RAL 9002
pure white (.71)	RAL 9010
graphite black (.73)	RAL 9011
traffic white (.72)	RAL 9016
other RAL colours on request	

Stainless steel

natural finish	.80
brushed	.82
polished	.83

Plastic / rubber / wood

PVC	.95
rubber	.96
beech wood	.98

HELM Range

TEH_01	Hardware for Sliding Wardrobe Doors
TEH_02H	Hardware for Sliding Doors (Wood)
TEH_02G	Hardware for Sliding Doors (Glass)
TEH_02D	Design Hardware for Sliding Doors (Wood and Glass)
TEH_06	Hardware for Sliding Gates
TEH_09	Hardware for Gateway Gates
TEH_11	Hardware for Curtains and Tarpaulins
TEH_12	Safety Equipment against Falls from a Height (PSE)
TEH_40	Hardware for Sliding Shutters



TEH_01



TEH_02H



TEH_02G



TEH_02D



TEH_06



TEH_09



TEH_11



TEH_12



TEH_40

KWS Range

TEK_0102	Door Holders and Door Stops
TEK_0308	Door Pulls, Door Handles and Accessories
TEK_0506	Flush Pulls and Locks
TEK_0407	Hardware for Handrails, Floor Rails, Coat Racks and Toilet Partition Walls



TEK_0102



TEK_0308



TEK_0506



TEK_0407

The technical specifications are up-to-date. We reserve the right to make modifications with regard to design and styling which serve the purpose of technical improvement. We appreciate your understanding that we assume no liability for any typing errors or any other errors. The reproduction of this document, in extracts or complete, is not permitted without our express written permission.

Part no.: TEK_0102/05.2013
This catalogue supersedes all previous catalogues.

Woelm GmbH

Hasselbecker Str. 2-4
D - 42579 Heiligenhaus
Phone: + 49 (0) 20 56 - 18 - 0
Telefax: + 49 (0) 20 56 - 18 - 21
www.helmkws.de
contact@woelm.de

Woelm Austria GmbH

Seewalchen 5a
A - 5201 Seekirchen
Phone: + 43 (0) 62 12 - 25 02
Telefax: + 43 (0) 62 12 - 69 95
www.helmkws.at
contact@woelm.co.at