

## Hardware for Handrails, Floor Rails, Coat Racks and Toilet Partition Walls



Catalogue: TEK\_0407

### Information

KWS Overview Page 3

### KWS Handrails

General Information Page 4

Product Overview Page 6

KWS Handrails Page 10

KWS Handrail Brackets Page 12

KWS Modular System Page 32

### KWS Floor Rails

General Information Page 44

Product Overview Page 45

KWS Foot Rail Components Page 46

### KWS Coat Racks

General Information Page 50

Product Overview Page 51

KWS Coat Rack Components Page 52

### KWS Partition Wall Supports

General Information Page 56

Product overview Page 58

KWS Partition Wall Components Page 60

### Accessories

Accessories Page 75

### Appendix

Numbers chart Page 78

Finishes chart Page 79





### General Information

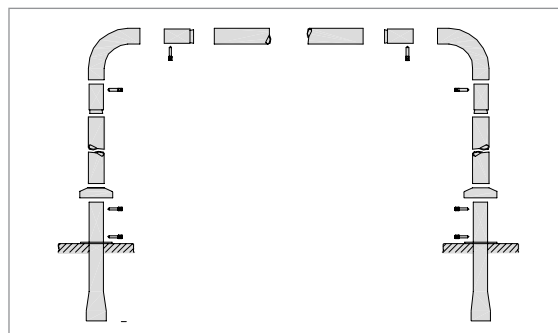
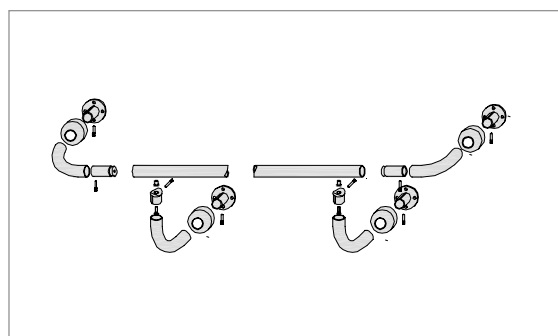
The KWS range includes many varied components for handrails, foot rails, coat racks and toilet partition walls. Besides the comprehensive range of handrail brackets of aluminium, steel, brass and stainless steel you will also find a stainless steel modular system for handrails and balustrades. From this system a big variety of special designs such as signposts poles can be manufactured on request. In the area of floor rails and coat racks KWS excels at the time-tested modular system that offers a flexible and sturdy solution for interior work in this field. Moreover, you will find in this catalogue supports for toilet partition walls, especially of stainless steel for wet areas.



**KWS handrails – the flexible solution for all applications**

Handrails and the corresponding brackets are supplied by KWS in many varied shapes for many different constructional situations. This is why KWS can offer the optimum solution for staircases and corridors in public buildings or at home. For this the matching handrails of stainless steel or beech wood are offered. Other wood types can be supplied on request.

The stainless steel modular system makes special designs possible in balustrades, barriers or signpost poles in addition to the manufacture of complete handrails. These are made to order according to customer specifications and are delivered as a modular system for self-assembly.



## Technical note

There are three basic types of handrail brackets:

- 1. for screw-on handrails**
- 2. for handrails with built-in screw fixing**
- 3. for balustrade handrails**

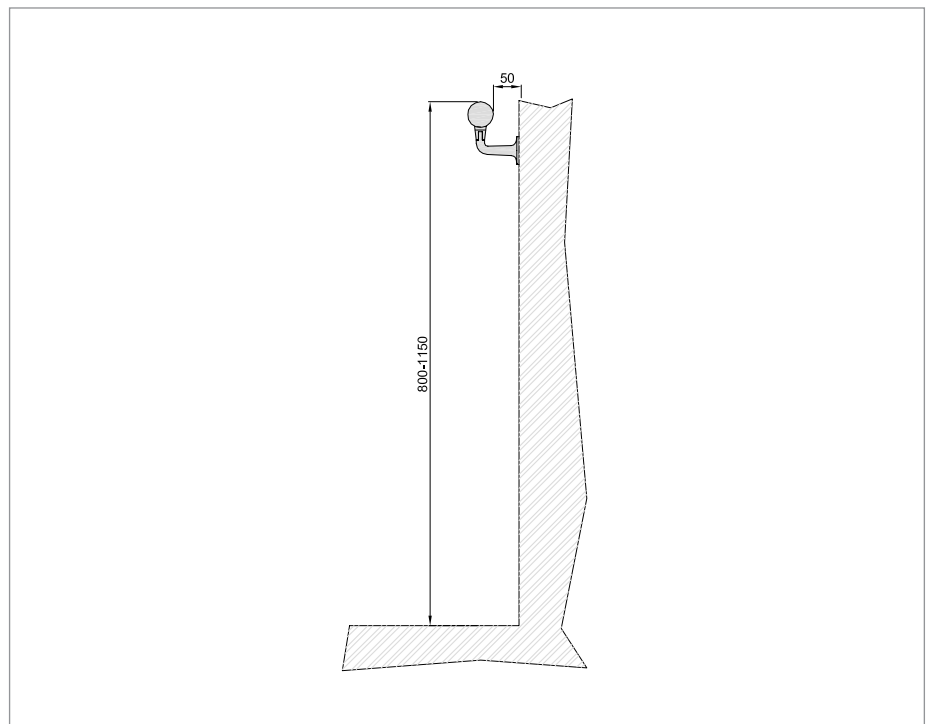
The most common cases are the screw-on type or handrails with built-in screw fixing in corridors and staircases. In the case of inclined handrails you can adjust the angle as an additional feature on the following models.

- 4511.. to 4518..**
- 4530.. to 4541..**
- 4578.. and 4579..**
- 4678.. to 4681..**

## Things to be taken into account when mounting handrail brackets:

Depending on the wall condition and load a distance spacing of 800 to 1200 mm between two brackets must not be exceeded. If not provided by us, sturdy fixing material should be used that takes into account the conditions on-site.

Handrails need to have a clearance of 50 mm from the wall and should have a distance of 800 to 1150 mm to the floor.





Page 11



Page 11



Page 12



Page 12



Page 13



Page 13



Page 14



Page 14



Page 15



Page 15



Page 16



Page 16



Page 17



Page 17



Page 18



Page 18



Page 19



Page 19



Page 20



Page 20



Page 21



Page 22



Page 22



Page 23



Page 23



Page 24



Page 24



Page 25



Page 25



Page 26



Page 26



Page 27



Page 28



Page 28



Page 29



Page 29



Page 30



Page 30



Page 31



Page 31



Page 32



Page 32



Page 33



Page 34



Page 34



Page 35



Page 35



Page 36



Page 36



Page 37



Page 37



Page 38



Page 38



Page 38



Page 38



Page 38



Page 39



Page 40



Page 40



Page 41



Page 41



Page 42



Page 42



Page 43



Page 43



**Standard design**

stainless steel

only for 8808.. 8399.. 8308..

brushed  
(length 2000 mm, 3000 mm, cut to size) **.82**

beechwood

only for 8329.. 8330..

beech wood  
(length 2400 mm or cut to size) **.98**



**8808..**

Ø 30 x 1.5 mm tube

**8399..**

Ø 35 x 1.5 mm tube

**8308..**

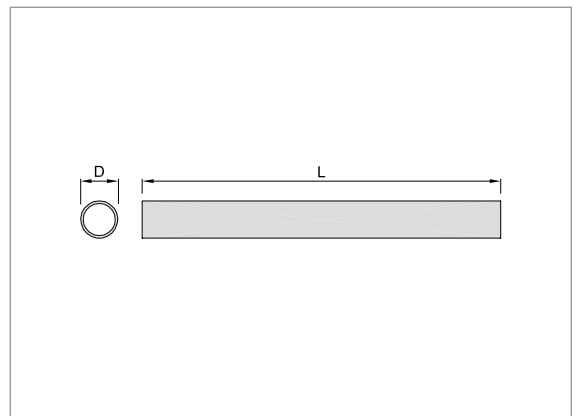
Ø 40 x 2.0 mm tube

**8329..**

Ø 35 mm beechwood

**8330..**

Ø 40 mm beechwood



**Standard design**

stainless steel

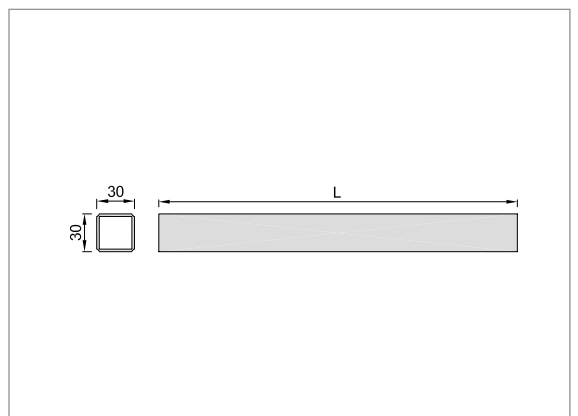
brushed **.82**



**8520..**

30 x 30 tube

available in lengths up to 2500 mm



**Order example**

Piece	Part no.	Finish no.
... Piece	<b>8808</b>	<b>.82</b>

**KWS Handrails**  
Handrails Brackets



**4511..**

with dished saddle

**4513..**

with flat saddle

with stair bolt M10x80

**Mounting**

The distance between the brackets should be between 800 - 1200 mm depending on the load and wall condition.

**Standard design**

**steel/aluminium**

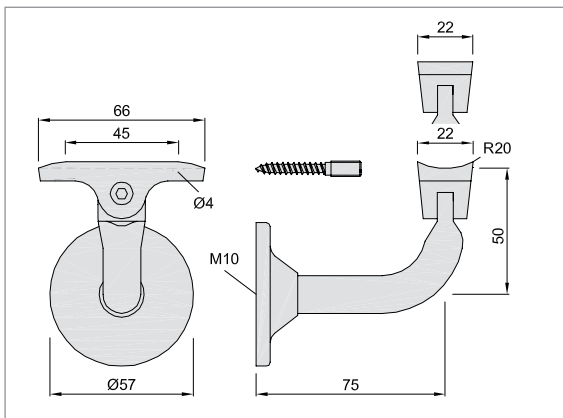
**of steel with aluminium saddle**

silver stove enamelled	<b>.02</b>
black stove enamelled	<b>.03</b>
coloured plastic-coated	<b>.70</b>

unit	6 pieces
------	----------

**Piece weight**

steel/aluminium	0.210 kg
-----------------	----------



**4512..**

with dished saddle

**4514..**

with flat saddle

**Mounting**

The distance between the brackets should be between 800 - 1200 mm depending on the load and wall condition.

**Standard design**

**steel/aluminium**

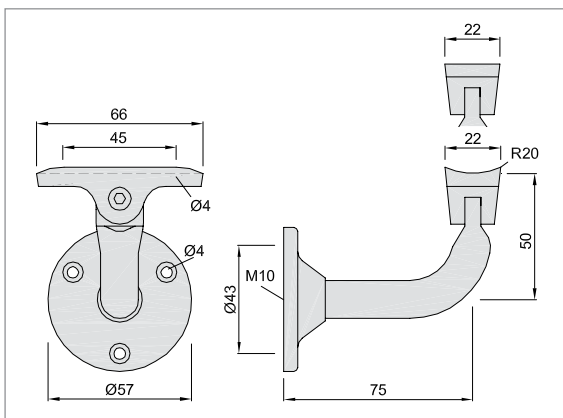
**of steel with aluminium saddle**

silver stove enamelled	<b>.02</b>
black stove enamelled	<b>.03</b>
coloured plastic-coated	<b>.70</b>

unit	6 pieces
------	----------

**Piece weight**

steel/aluminium	0.210 kg
-----------------	----------



**Order example**

Piece	Part no.	Finish no.
... Piece	<b>4511</b>	<b>.02</b>

**Standard design**

<b>aluminium</b>	
coloured plastic-coated	<b>.70</b>

**aluminium machined according to E 5**

KWS 1 silver anodised	<b>.31</b>
KWS 2 nickel silver anodised	<b>.32</b>
KWS 3 gold anodised	<b>.33</b>
KWS 5 dark bronze anodised	<b>.37</b>

**brass**

brushed and lacquered	<b>.62</b>
nickel-plated	<b>.63</b>
polished and lacquered	<b>.66</b>

unit	6 pieces
------	----------

**Piece weight**

aluminium	0.140 kg
brass	0.330 kg

**4515..**

with dished saddle

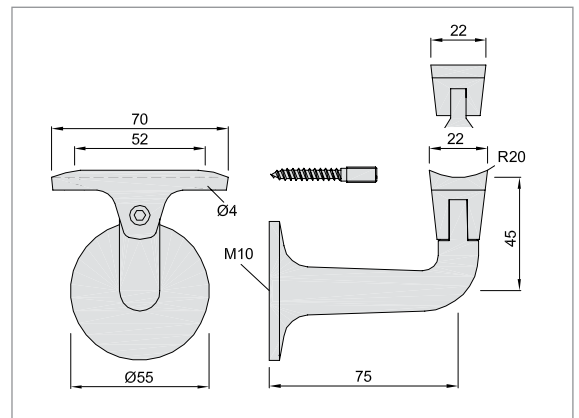
**4517..**

with flat saddle

with stair bolt M10x80

**Mounting**

The distance between the brackets should be between 800 - 1200 mm depending on the load and wall condition.



**Standard design**

<b>aluminium</b>	
coloured plastic-coated	<b>.70</b>

**aluminium machined according to E 5**

KWS 1 silver anodised	<b>.31</b>
KWS 2 nickel silver anodised	<b>.32</b>
KWS 3 gold anodised	<b>.33</b>
KWS 5 dark bronze anodised	<b>.37</b>

**brass**

brushed and lacquered	<b>.62</b>
nickel-plated	<b>.63</b>
polished and lacquered	<b>.66</b>

unit	6 pieces
------	----------

**Piece weight**

aluminium	0.140 kg
brass	0.330 kg

**4516..**

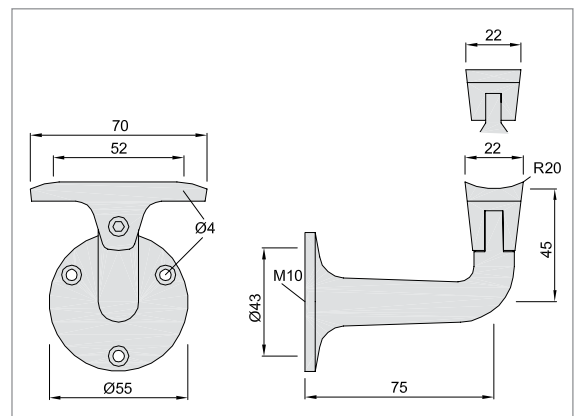
with dished saddle

**4518..**

with flat saddle

**Mounting**

The distance between the brackets should be between 800 - 1200 mm depending on the load and wall condition.



**Order example**

Piece	Part no.	Finish no.
... Piece	<b>4515</b>	<b>.31</b>



**4530..**

for 55 mm wall clearance  
dished saddle

**4536..**

for 55 mm wall clearance  
flat saddle

**4531..**

for 75 mm wall clearance  
dished saddle

**4537..**

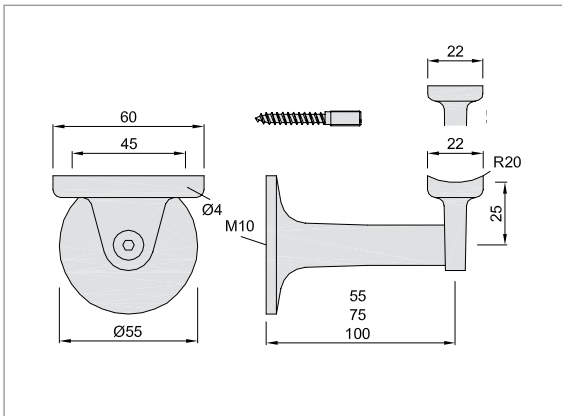
for 75 mm wall clearance  
flat saddle

**4532..**

for 100 mm wall clearance  
dished saddle

**4538..**

for 100 mm wall clearance  
flat saddle



**4533..**

for 55 mm wall clearance  
dished saddle

**4539..**

for 55 mm wall clearance  
flat saddle

**4534..**

for 75 mm wall clearance  
dished saddle

**4540..**

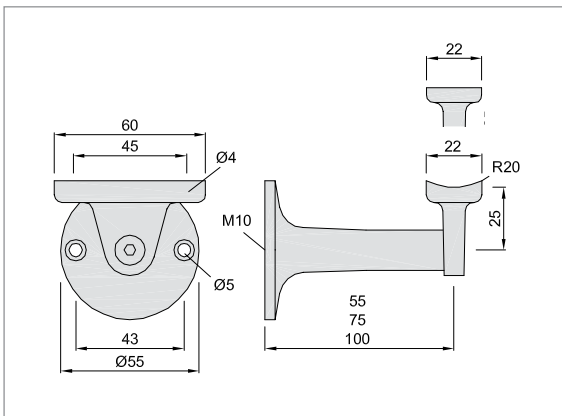
for 75 mm wall clearance  
flat saddle

**4535..**

for 100 mm wall clearance  
dished saddle

**4541..**

for 100 mm wall clearance  
flat saddle



**Standard design**

<b>aluminium</b>	
coloured plastic-coated	<b>.70</b>

**aluminium machined according to E 5**

KWS 1 silver anodised	<b>.31</b>
KWS 2 nickel silver anodised	<b>.32</b>
KWS 3 gold anodised	<b>.33</b>
KWS 5 dark bronze anodised	<b>.37</b>

unit	6 pieces
------	----------

**Piece weight**

aluminium <b>4530..</b>	0.110 kg
-------------------------	----------

with stair bolt M10x80

**Mounting**

The distance between the brackets should be between 800 - 1200 mm depending on the load and wall condition.

**Standard design**

<b>aluminium</b>	
coloured plastic-coated	<b>.70</b>

**aluminium machined according to E 5**

KWS 1 silver anodised	<b>.31</b>
KWS 2 nickel silver anodised	<b>.32</b>
KWS 3 gold anodised	<b>.33</b>
KWS 5 dark bronze anodised	<b>.37</b>

unit	6 pieces
------	----------

**Piece weight**

aluminium <b>4533..</b>	0.110 kg
-------------------------	----------

**Mounting**

The distance between the brackets should be between 800 - 1200 mm depending on the load and wall condition.

**Order example**

Piece	Part no.	Finish no.
... Piece	<b>4530</b>	<b>.31</b>

**Standard design**

<b>steel</b>	
silver stove enamelled	<b>.02</b>
black stove enamelled	<b>.03</b>
electro-galvanised	<b>.06</b>
coloured plastic-coated	<b>.70</b>

<b>brass</b>	
brushed and lacquered	<b>.62</b>
polished and lacquered	<b>.66</b>

<b>stainless steel</b>	
brushed	<b>.82</b>
polished	<b>.83</b>

unit	6 pieces
------	----------

<b>Piece weight</b>	
steel	0.160 kg
brass	0.180 kg
stainless steel	0.160 kg

**4524..**

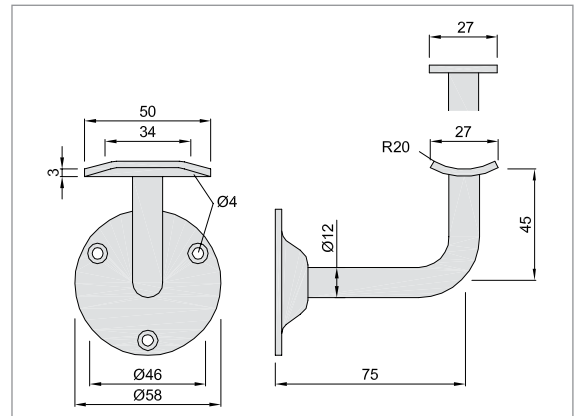
with dished saddle

**4525..**

with flat saddle

**Mounting**

The distance between the brackets should be between 800 - 1200 mm depending on the load and wall condition.



**Standard design**

<b>steel</b>	
silver stove enamelled	<b>.02</b>
black stove enamelled	<b>.03</b>
electro-galvanised	<b>.06</b>
coloured plastic-coated	<b>.70</b>

<b>stainless steel</b>	
brushed	<b>.82</b>
polished	<b>.83</b>

unit	6 pieces
------	----------

<b>Piece weight</b>	
steel	0.220 kg
stainless steel	0.220 kg

**4574..**

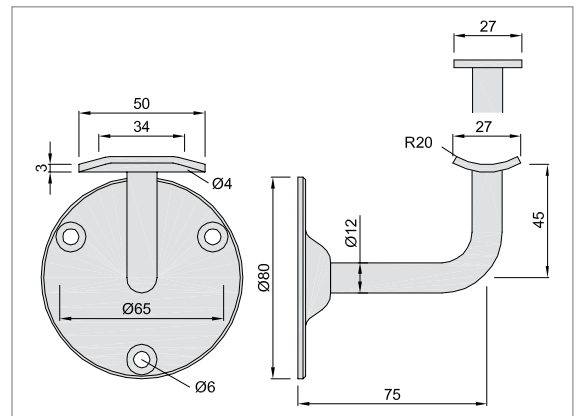
with dished saddle

**4575..**

with flat saddle

**Mounting**

The distance between the brackets should be between 800 - 1200 mm depending on the load and wall condition.



**Order example**

Piece	Part no.	Finish no.
... Piece	<b>4524</b>	<b>.02</b>



**4570..**

with dished saddle

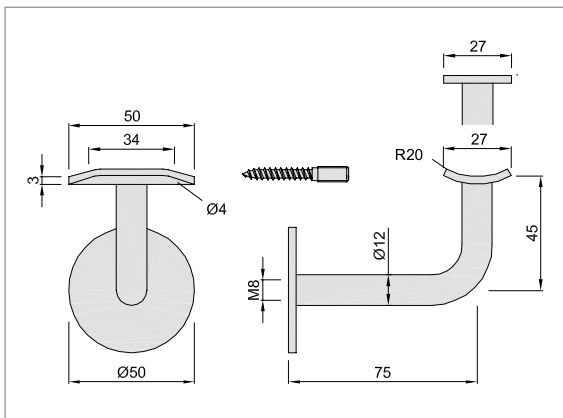
**4571..**

with flat saddle

with stair bolt M8x70

**Mounting**

The distance between the brackets should be between 800 - 1200 mm depending on the load and wall condition.



**4528..**

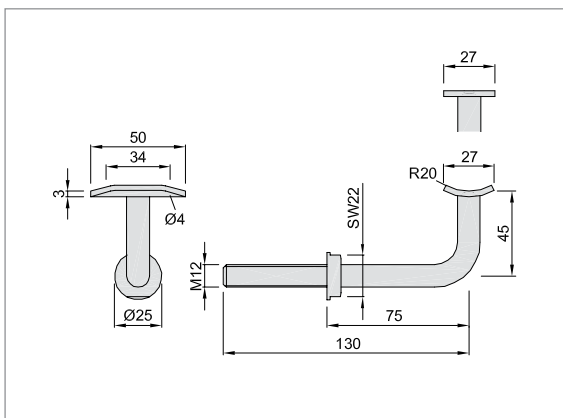
with dished saddle

**4529..**

with flat saddle

**Mounting**

The distance between the brackets should be between 800 - 1200 mm depending on the load and wall condition.



**Standard design**

<b>steel</b>	
silver stove enamelled	<b>.02</b>
black stove enamelled	<b>.03</b>
electro-galvanised	<b>.06</b>
coloured plastic-coated	<b>.70</b>

**brass**

brushed and lacquered	<b>.62</b>
polished and lacquered	<b>.66</b>

**stainless steel**

brushed	<b>.82</b>
polished	<b>.83</b>

unit	6 pieces
------	----------

**Piece weight**

steel	0.160 kg
brass	0.180 kg
stainless steel	0.160 kg

**Standard design**

<b>steel</b>	
silver stove enamelled	<b>.02</b>
black stove enamelled	<b>.03</b>
electro-galvanised	<b>.06</b>
coloured plastic-coated	<b>.70</b>

**stainless steel**

brushed	<b>.82</b>
polished	<b>.83</b>

unit	6 pieces
------	----------

**Piece weight**

steel	0.170 kg
stainless steel	0.170 kg

**Order example**

Piece	Part no.	Finish no.
... Piece	<b>4570</b>	<b>.02</b>

**Standard design**

steel	
silver stove enamelled	.02
black stove enamelled	.03
electro-galvanised	.06
coloured plastic-coated	.70

**stainless steel**

brushed	.82
polished	.83

unit	6 pieces
------	----------

**Piece weight**

steel	0.170 kg
stainless steel	0.170 kg

**4522..**

with dished saddle

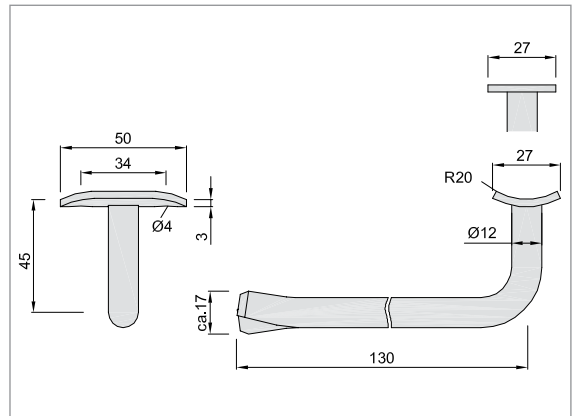
**4523..**

with flat saddle

for grouting in

**Mounting**

The distance between the brackets should be between 800 - 1200 mm depending on the load and wall condition.



**Standard design**

steel	
raw steel, untreated surface	.01

unit	6 pieces
------	----------

**Piece weight**

steel	0.120 kg
-------	----------

**4526..**

with dished saddle

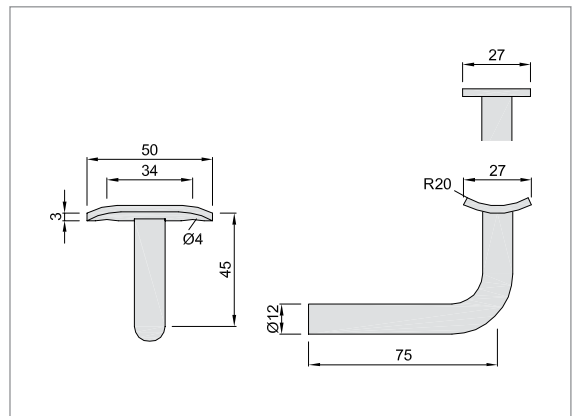
**4527..**

with flat saddle

for welding on

**Mounting**

The distance between the brackets should be between 800 - 1200 mm depending on the load and wall condition.



**Order example**

Piece	Part no.	Finish no.
... Piece	4522	.02



**4601..**

with M6 grub screw

**4602..**

with dished saddle

**4603..**

with flat saddle

**4611..**

like 4601..  
with cover cap 4600..

**4612..**

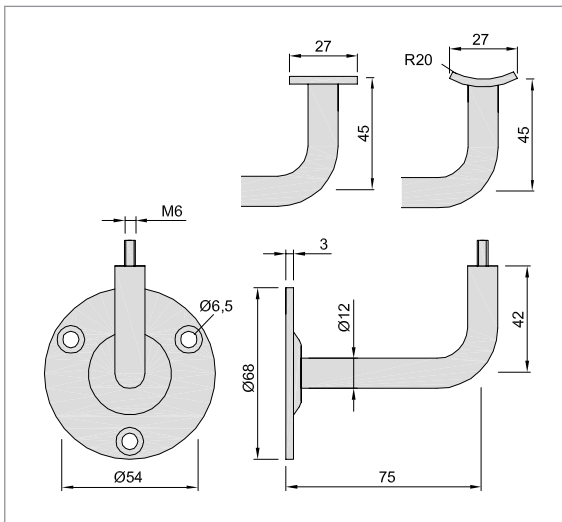
like 4602..  
with cover cap 4600..

**4613..**

like 4603..  
with cover cap 4600..

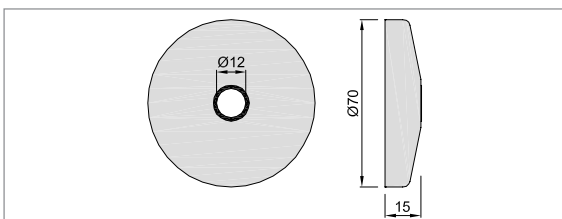
**Mounting**

The distance between the brackets should be between 800 - 1200 mm depending on the load and wall condition.



**4600..**

cover cap for 4601.. 4602..  
4603..



**Standard design**

steel	
silver stove enamelled	.02
stainless steel	
brushed	.82
polished	.83
unit	6 pieces

**Piece weight**

steel	4601..	0.164 kg
stainless steel	4601..	0.164 kg

**Standard design**

steel	
silver stove enamelled	.02
stainless steel	
brushed	.82
polished	.83
unit	6 pieces

**Piece weight**

steel	0.044 kg
stainless steel	0.044 kg

**Order example**

Piece	Part no.	Finish no.
... Piece	4601	.02

**Standard design**

steel	
silver stove enamelled	.02
black stove enamelled	.03
electro-galvanised	.06
coloured plastic-coated	.70

**aluminium machined according to E 6**

KWS 1 silver anodised	.41
KWS 2 nickel silver anodised	.42
KWS 3 gold anodised	.43
KWS 5 dark bronze anodised	.47

**brass**

brushed and lacquered	.62
polished and lacquered	.66

**stainless steel**

brushed	.82
polished	.83

unit	6 pieces
------	----------

**Piece weight**

aluminium	0.075 kg
steel	0.210 kg
brass	0.230 kg
stainless steel	0.210 kg

**Standard design**

steel	
silver stove enamelled	.02
black stove enamelled	.03
electro-galvanised	.06
coloured plastic-coated	.70

**aluminium machined according to E 6**

KWS 1 silver anodised	.41
KWS 2 nickel silver anodised	.42
KWS 3 gold anodised	.43
KWS 5 dark bronze anodised	.47

**brass**

brushed and lacquered	.62
polished and lacquered	.66

**stainless steel**

brushed	.82
polished	.83

unit	6 pieces
------	----------

**Piece weight**

aluminium	0.075 kg
steel	0.210 kg
brass	0.230 kg
stainless steel	0.210 kg

**Order example**

Piece	Part no.	Finish no.
... Piece	4545	.02

**4545..**

with dished saddle

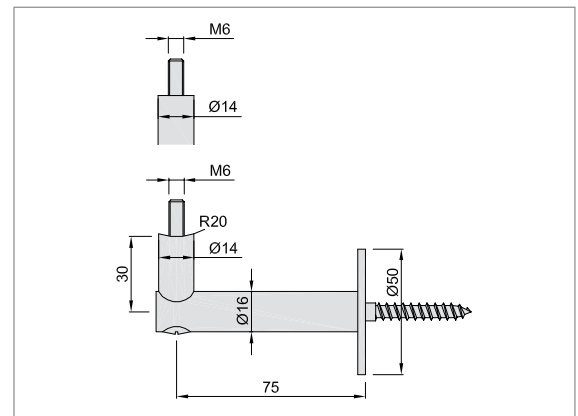
**4546..**

with flat saddle

handrail fixing with an M6 screw  
with stair bolt M8x70

**Mounting**

The distance between the brackets should be between 800 - 1200 mm depending on the load and wall condition.



**4547..**

with dished saddle

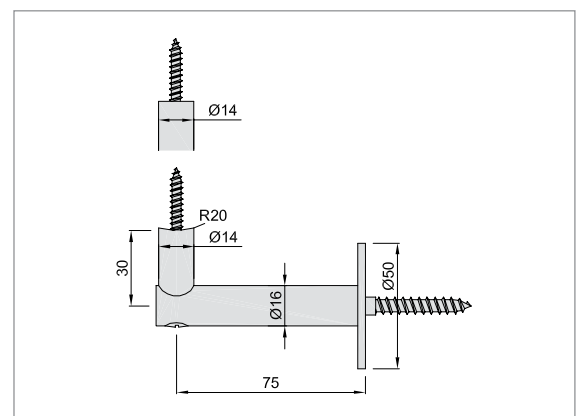
**4548..**

with flat saddle

handrail fixing with a 6 mm wood screw  
with stair bolt M8x70

**Mounting**

The distance between the brackets should be between 800 - 1200 mm depending on the load and wall condition.





**4578..**

with dished saddle

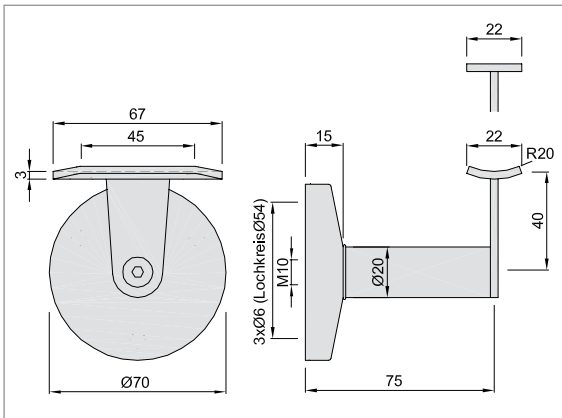
**4579..**

with flat saddle

with cover cap

**Mounting**

The distance between the brackets should be between 800 - 1200 mm depending on the load and wall condition.



**Standard design**

stainless steel	
brushed	.82
polished	.83
unit	3 pieces

**Piece weight**

stainless steel	0.350 kg
-----------------	----------



**4678..**

with dished saddle

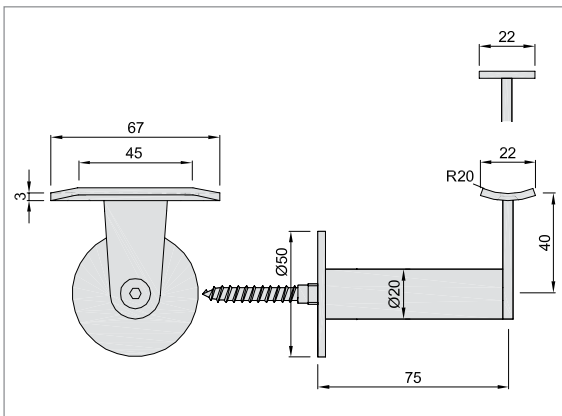
**4679..**

with flat saddle

with stair bolt M8x70

**Mounting**

The distance between the brackets should be between 800 - 1200 mm depending on the load and wall condition.



**Standard design**

stainless steel	
brushed	.82
polished	.83
unit	3 pieces

**Piece weight**

stainless steel	0.350 kg
-----------------	----------

**Order example**

Piece	Part no.	Finish no.
... Piece	4578	.82



**Standard design**

<b>stainless steel</b>	
brushed	<b>.82</b>
polished	<b>.83</b>
unit	3 pieces

**Piece weight**

stainless steel	0.350 kg
-----------------	----------

**4680..**

with dished saddle

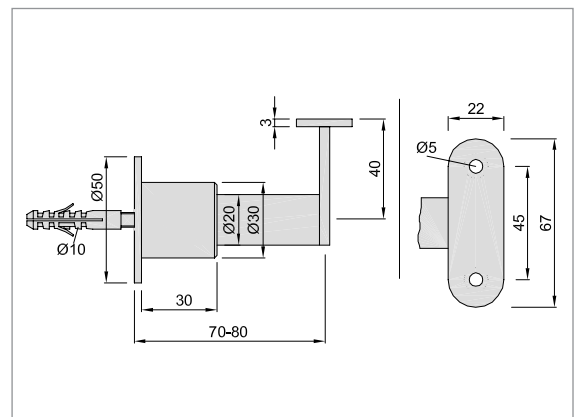
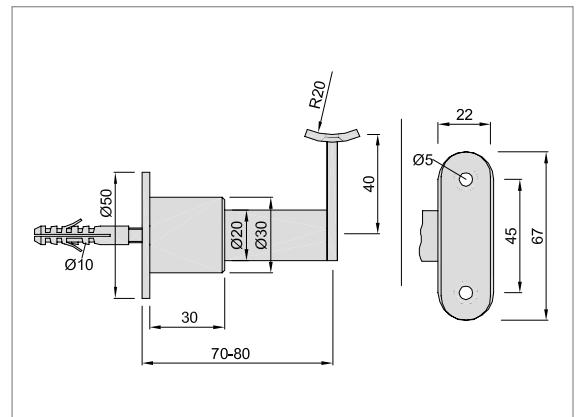
**4681..**

with flat saddle

for 70 - 80 mm wall clearance  
wall clearance **adjustable**  
with grub screw M8x80

**Mounting**

The distance between the brackets should be between 800 - 1200 mm depending on the load and wall condition.



**Order example**

Piece	Part no.	Finish no.
... Piece	<b>4680</b>	<b>.82</b>



**4620..**

Handrail bracket **4620..** with  
screwed-on  $\varnothing 40 \times 2.0$  mm tube



For  $\varnothing 40$  mm handrails of timber  
only.

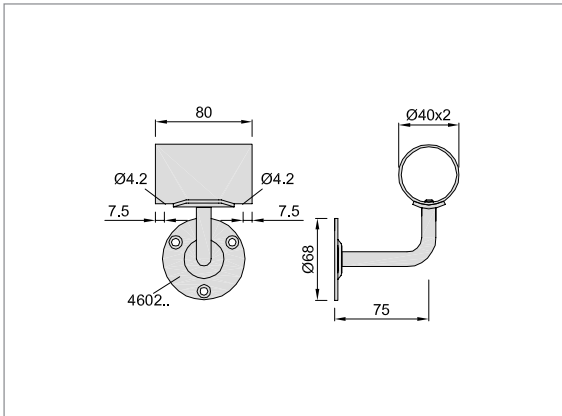
**Standard design**

stainless steel	
brushed	<b>.82</b>
polished	<b>.83</b>

unit	1 piece
------	---------

**Piece weight**

stainless steel	0.325 kg
-----------------	----------



**4621..**

Handrail bracket **4620..**  
with screwed-on right end bend  
 $\varnothing 40 \times 2.0$  mm tube

**4622..**

Handrail bracket **4620..**  
with screwed-on left end bend  
 $\varnothing 40 \times 2.0$  mm tube

**Standard design**

stainless steel	
brushed	<b>.82</b>
polished	<b>.83</b>

unit	1 piece
------	---------

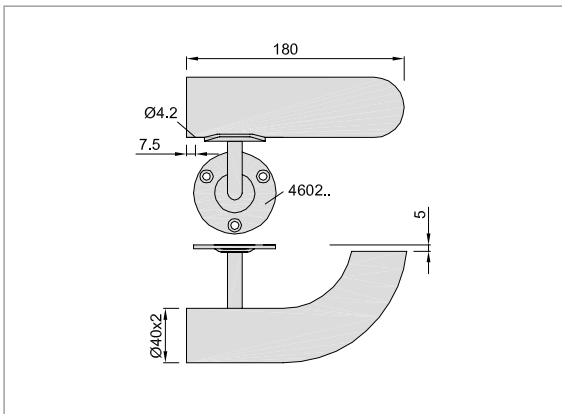
**Piece weight**

stainless steel	0.545 kg
-----------------	----------

Fig. depicts right end bend



For  $\varnothing 40$  mm handrails of timber  
only.



**Order example**

Piece	Part no.	Finish no.
... Piece	<b>4620</b>	<b>.82</b>

**Standard design**

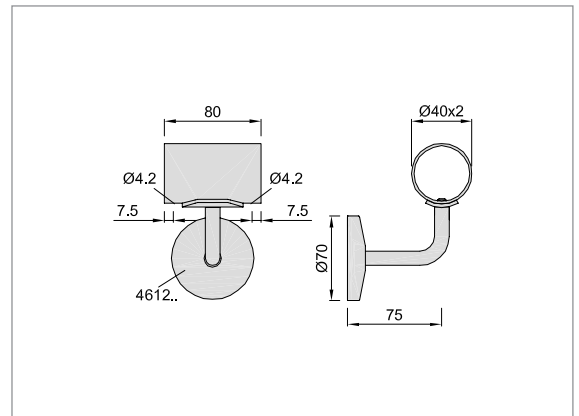
<b>stainless steel</b>	
brushed	.82
polished	.83
unit	1 piece
<b>Piece weight</b>	
stainless steel	0.330 kg

**4624..**

Handrail bracket **4612..**  
with screwed-on  $\varnothing 40 \times 2.0$  mm tube



For  $\varnothing 40$  mm handrails of timber only.



**Standard design**

<b>stainless steel</b>	
brushed	.82
polished	.83
unit	1 piece
<b>Piece weight</b>	
stainless steel	0.550 kg

**4625..**

Handrail bracket **4612..**  
with screwed-on right end bend  
 $\varnothing 40 \times 2.0$  mm tube

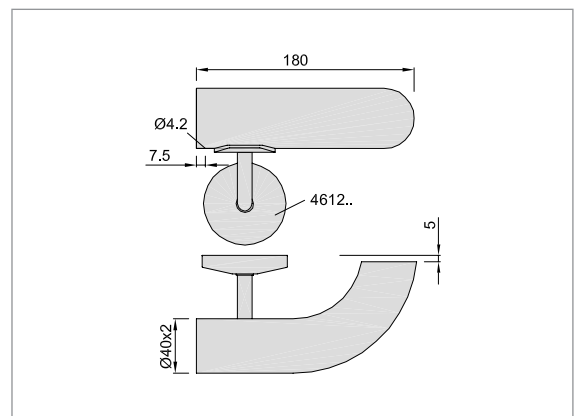
**4626..**

Handrail bracket **4612..**  
with screwed-on left end bend  
 $\varnothing 40 \times 2.0$  mm tube

Fig. depicts right end bend



For  $\varnothing 40$  mm handrails of timber only.



**Order example**

Piece	Part no.	Finish no.
... Piece	4624	.82



### 4501..

for 55 mm wall clearance

with flat saddle and stair bolt  
M10x80 for plugging

#### Mounting

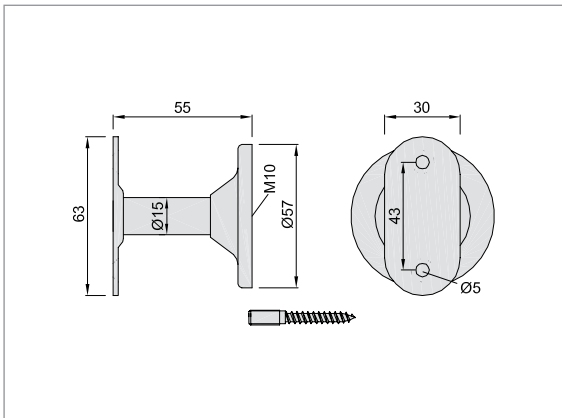
The distance between the brackets should be between 800 - 1200 mm depending on the load and wall condition.

#### Standard design

steel	
silver stove enamelled	.02
black stove enamelled	.03
electro-galvanised	.06
coloured plastic-coated	.70
unit	6 pieces

#### Piece weight

steel	0.170 kg
-------	----------



### 4502..

for 55 mm wall clearance

with flat saddle and two  
countersunk screw holes for  
screw fixing

#### Mounting

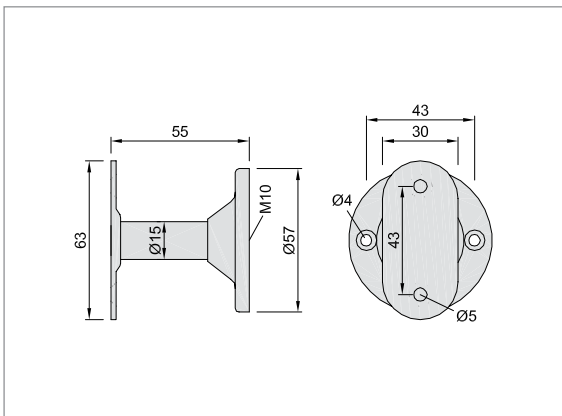
The distance between the brackets should be between 800 - 1200 mm depending on the load and wall condition.

#### Standard design

steel	
silver stove enamelled	.02
black stove enamelled	.03
electro-galvanised	.06
coloured plastic-coated	.70
unit	6 pieces

#### Piece weight

steel	0.170 kg
-------	----------



#### Order example

Piece	Part no.	Finish no.
... Piece	4501	.02

**Standard design**

**aluminium machined according to E 5**

KWS 1 silver anodised	<b>.31</b>
KWS 2 nickel silver anodised	<b>.32</b>
KWS 3 gold anodised	<b>.33</b>
KWS 5 dark bronze anodised	<b>.37</b>

**aluminium**

coloured plastic-coated	<b>.70</b>
-------------------------	------------

unit	6 pieces
------	----------

**Piece weight**

aluminium	0.110 kg
-----------	----------

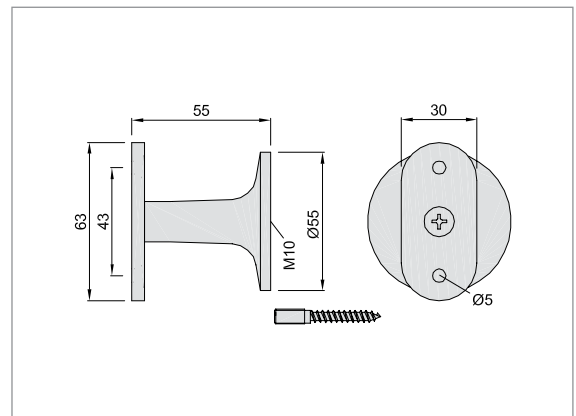
**4701..**

for 55 mm wall clearance

with flat saddle and stair bolt  
M10x80 for plugging

**Mounting**

The distance between the brackets should be between 800 - 1200 mm depending on the load and wall condition.



**Standard design**

**aluminium machined according to E 5**

KWS 1 silver anodised	<b>.31</b>
KWS 2 nickel silver anodised	<b>.32</b>
KWS 3 gold anodised	<b>.33</b>
KWS 5 dark bronze anodised	<b>.37</b>

**steel/aluminium**

coloured plastic-coated	<b>.70</b>
-------------------------	------------

unit	6 pieces
------	----------

**Piece weight**

aluminium	0.110 kg
-----------	----------

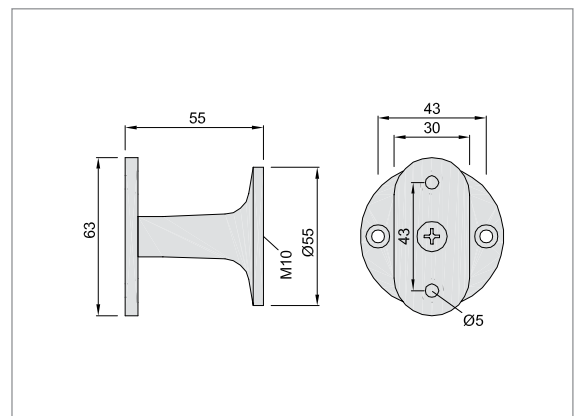
**4702..**

for 55 mm wall clearance

with flat saddle and two  
countersunk screw holes for  
screw fixing

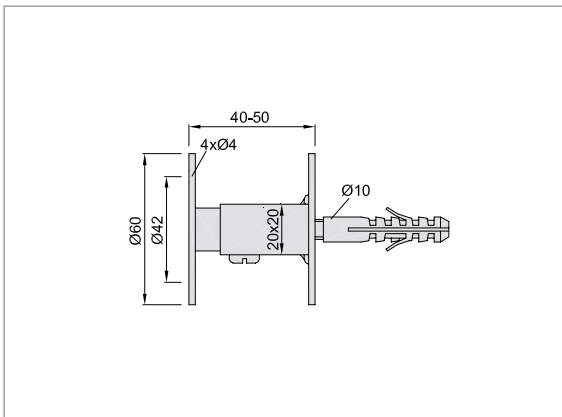
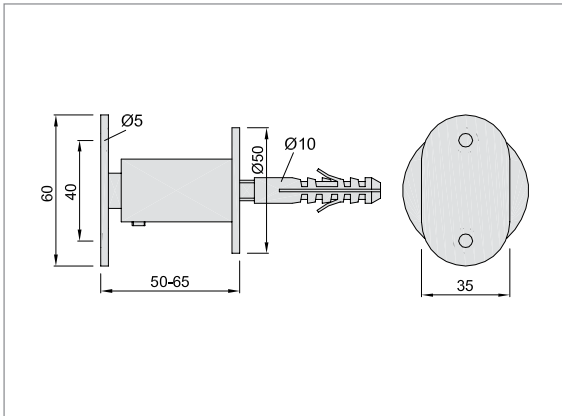
**Mounting**

The distance between the brackets should be between 800 - 1200 mm depending on the load and wall condition.



**Order example**

Piece	Part no.	Finish no.
... Piece	<b>4701</b>	<b>.31</b>



**4550..**

with fixing material

**4551..**

without fixing material

adjustable for 50 - 65 mm  
clearance to the wall

**Mounting**

Screw handrail brackets (oval rosette with bolt) on the handrail with distance spacing of 800 - 1200 mm, mark bore holes at the corresponding wall positions by marking aid (bolt tip), bore, screw on wall brackets, press handrail with brackets into the wall brackets, align and join on the side with clamping screw.



**Standard design**

<b>aluminium machined according to E 4</b>	
KWS 1 silver anodised	<b>.22</b>
KWS 2 nickel silver anodised	<b>.23</b>
KWS 3 gold anodised	<b>.24</b>
KWS 5 dark bronze anodised	<b>.28</b>

<b>aluminium machined according to E 5</b>	
KWS 1 silver anodised	<b>.31</b>
KWS 2 nickel silver anodised	<b>.32</b>
KWS 3 gold anodised	<b>.33</b>
KWS 5 dark bronze anodised	<b>.37</b>

<b>aluminium machined according to E 6</b>	
KWS 1 silver anodised	<b>.41</b>
KWS 2 nickel silver anodised	<b>.42</b>
KWS 5 dark bronze anodised	<b>.47</b>

<b>aluminium</b>	
coloured plastic-coated	<b>.70</b>

<b>stainless steel</b>	
brushed	<b>.82</b>
polished	<b>.83</b>

unit	5 pieces
------	----------

<b>Piece weight</b>	
aluminium	0.130 kg
stainless steel	0.300 kg

**4560..**

with fixing material

**4561..**

without fixing material

adjustable for 40 - 50 mm  
clearance to the wall, two-parts

**Mounting**

Bore holes are marked at the wall positions planned for the handrail with a distance spacing of 800 - 1200 mm. The wall is drilled and plugged and the brackets are screwed on. The counter pieces are fixed on the corresponding positions on the handrail, pressed into the wall brackets and joined with a screw.

**Standard design**

<b>steel</b>	
silver stove enamelled	<b>.02</b>
black stove enamelled	<b>.03</b>
electro-galvanised	<b>.06</b>
coloured plastic-coated	<b>.70</b>

unit	5 pieces
------	----------

<b>Piece weight</b>	
steel	0.190 kg

**Order example**

<b>Piece</b>	<b>Part no.</b>	<b>Finish no.</b>
... Piece	<b>4550</b>	<b>.22</b>

**Standard design**

steel	
silver stove enamelled	.02
black stove enamelled	.03
electro-galvanised	.06
coloured plastic-coated	.70
unit	5 pieces

**Piece weight**

steel	0.200 kg
-------	----------

two-parts

**Mounting**

Bore holes are marked at the wall positions planned for the handrail with a distance spacing of 800 - 1200 mm. The wall is drilled and plugged and the brackets are screwed on. The counter pieces are fixed on the corresponding positions on the handrail, pressed into the wall brackets and joined with a screw.

**4503..**

for 40 mm wall clearance with fixing material

**4504..**

for 40 mm wall clearance without fixing material

**4505..**

for 55 mm wall clearance with fixing material

**4506..**

for 55 mm wall clearance without fixing material

**4507..**

for 75 mm wall clearance with fixing material

**4508..**

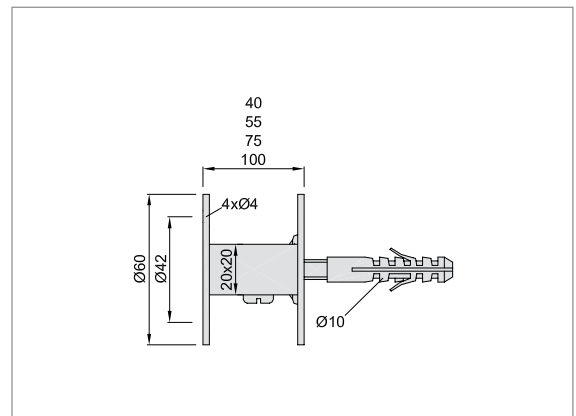
for 75 mm wall clearance without fixing material

**4543..**

for 100 mm wall clearance with fixing material

**4544..**

for 100 mm wall clearance without fixing material



**Order example**

Piece	Part no.	Finish no.
... Piece	4503	.02



**4509..**

with fixing material

**4510..**

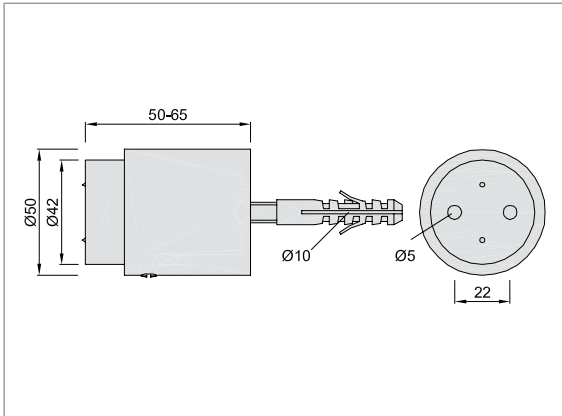
without fixing material

adjustable for 50 - 65 mm clearance to the wall

**Mounting**

The wall parts of the brackets are screwed on the wall with a distance spacing of 800 - 1200 mm at the wall positions planned for the handrail. Then the counter pieces are fixed on the handrail at the corresponding positions. The handrail with its brackets is pressed into the brackets fixed on the wall and firmly joined with a grub screw.

Mounting instructions are enclosed with each packing unit.



**4555..**

with fixing material

**4556..**

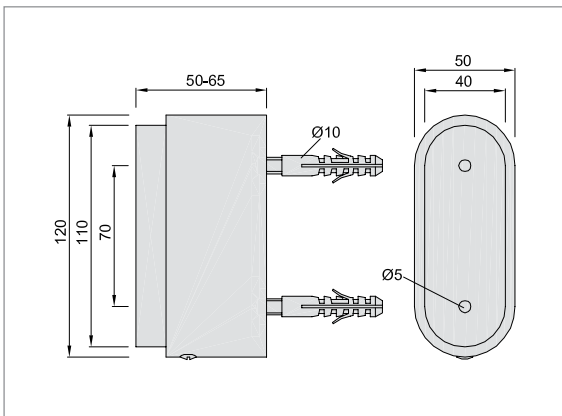
without fixing material

adjustable for 50 - 65 mm clearance to the wall

**Mounting**

The wall parts of the brackets are screwed on the wall with a distance spacing of 800 - 1200 mm at the wall positions planned for the handrail. Then the counter pieces are fixed on the handrail at the corresponding positions. The handrail with its brackets is pressed into the brackets fixed on the wall and firmly joined with a grub screw.

Mounting instructions are enclosed with each packing unit.



**Standard design**

**aluminium machined according to E 4**

KWS 1 silver anodised	<b>.22</b>
KWS 2 nickel silver anodised	<b>.23</b>
KWS 3 gold anodised	<b>.24</b>
KWS 5 dark bronze anodised	<b>.28</b>

**aluminium machined according to E 5**

KWS 1 silver anodised	<b>.31</b>
KWS 2 nickel silver anodised	<b>.32</b>
KWS 3 gold anodised	<b>.33</b>
KWS 5 dark bronze anodised	<b>.37</b>

**aluminium**

coloured plastic-coated	<b>.70</b>
-------------------------	------------

unit	5 pieces
------	----------

**Piece weight**

aluminium	0.210 kg
-----------	----------

The benefit of this handrail support is the simple mounting: Deviations when boring the plug holes can be corrected by means of an enclosed mounting disk. The screw holes in the handrail can be marked very easily by marking aids and possible unevenness of the wall can be offset by a long hole in the bracket.

**Standard design**

**aluminium machined according to E 4**

KWS 1 silver anodised	<b>.22</b>
KWS 2 nickel silver anodised	<b>.23</b>
KWS 3 gold anodised	<b>.24</b>
KWS 5 dark bronze anodised	<b>.28</b>

**aluminium machined according to E 5**

KWS 1 silver anodised	<b>.31</b>
KWS 2 nickel silver anodised	<b>.32</b>
KWS 3 gold anodised	<b>.33</b>
KWS 5 dark bronze anodised	<b>.37</b>

**aluminium**

coloured plastic-coated	<b>.70</b>
-------------------------	------------

unit	2 pieces
------	----------

**Piece weight**

aluminium	0.500 kg
-----------	----------

The benefit of this handrail bracket is the simple mounting: Deviations when boring the plug holes can be corrected by means of enclosed mounting discs and possible unevenness of the wall can be offset by a long hole in the bracket.

**Order example**

Piece	Part no.	Finish no.
... Piece	<b>4509</b>	<b>.22</b>

**Standard design**

<b>steel</b>	
silver stove enamelled	.02

**stainless steel**

brushed	.82
polished	.83

unit	3 pieces
------	----------

**Piece weight**

steel	0.136 kg
stainless steel	0.136 kg

**4607..**

with M6 grub screw

**4608..**

with dished saddle

**4609..**

with flat saddle

**4617..**

like 4607..  
with cover cap 4600..

**4618..**

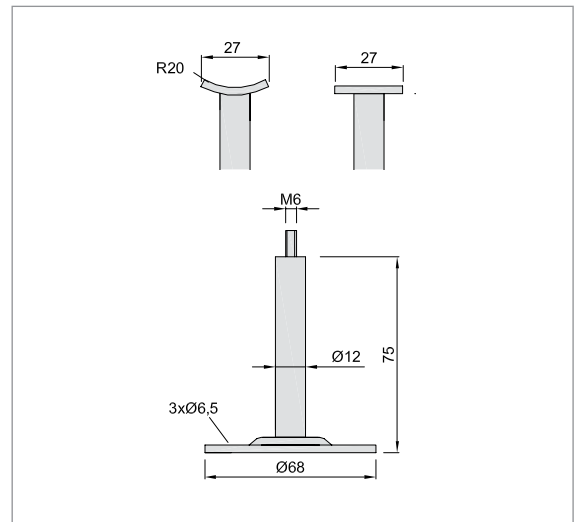
like 4608..  
with cover cap 4600..

**4619..**

like 4609..  
with cover cap 4600..

**Mounting**

The distance between the brackets should be between 800 - 1200 mm depending on the load and wall condition.



**Standard design**

<b>steel</b>	
silver stove enamelled	.02

**stainless steel**

brushed	.82
polished	.83

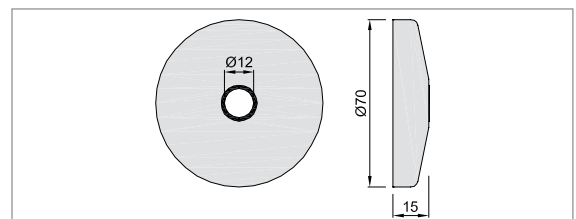
unit	6 pieces
------	----------

**Piece weight**

steel	0.044 kg
stainless steel	0.044 kg

**4600..**

Cover cap for 4607.. 4608..  
4609..



**Order example**

Piece	Part no.	Finish no.
... Piece	4607	.82



**4580..**

for 55 mm distance

**4581..**

for 75 mm distance

**4582..**

for 100 mm distance

**4583..**

for 120 mm distance

**Standard design**

**aluminium machined according to E 5**

KWS 1 silver anodised	<b>.31</b>
KWS 2 nickel silver anodised	<b>.32</b>
KWS 3 gold anodised	<b>.33</b>
KWS 5 dark bronze anodised	<b>.37</b>

**aluminium**

coloured plastic-coated	<b>.70</b>
-------------------------	------------

unit	6 pieces
------	----------

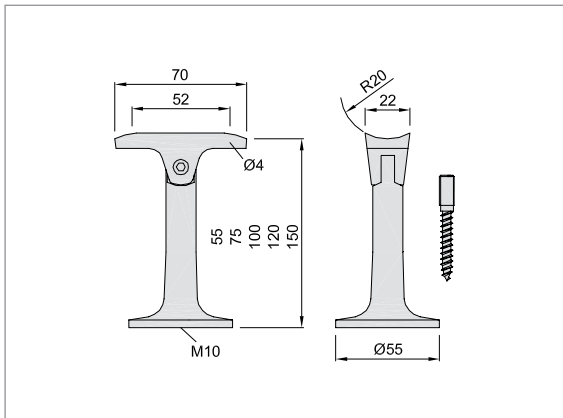
**Piece weight**

aluminium <b>4582..</b>	0.120 kg
-------------------------	----------

with dished saddle and stair bolt M10x80

**Mounting**

These handrail brackets are only suitable for vertical mounting. The distance between the brackets should be between 800 - 1200 mm depending on the load.



**4584..**

for 150 mm distance



**4585..**

for 55 mm distance

**4586..**

for 75 mm distance

**4587..**

for 100 mm distance

**4588..**

for 120 mm distance

**Standard design**

**aluminium machined according to E 5**

KWS 1 silver anodised	<b>.31</b>
KWS 2 nickel silver anodised	<b>.32</b>
KWS 3 gold anodised	<b>.33</b>
KWS 5 dark bronze anodised	<b>.37</b>

**aluminium**

coloured plastic-coated	<b>.70</b>
-------------------------	------------

unit	6 pieces
------	----------

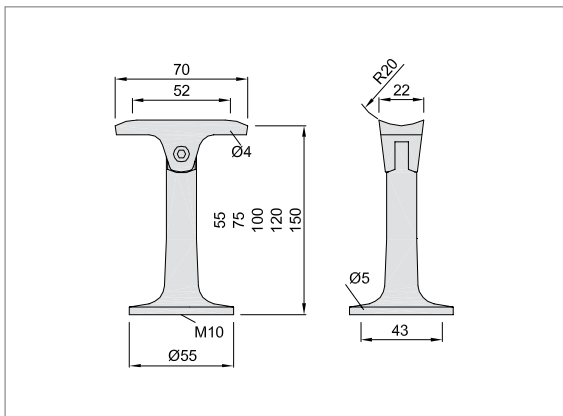
**Piece weight**

aluminium <b>4587..</b>	0.120 kg
-------------------------	----------

with dished saddle and two countersunk screw holes for screw fixing

**Mounting**

These handrail brackets are only suitable for vertical mounting. The distance between the brackets should be between 800 - 1200 mm depending on the load.



**4589..**

for 150 mm distance

**Order example**

Piece	Part no.	Finish no.
... Piece	<b>4580</b>	<b>.31</b>

**Standard design**

**aluminium machined according to E 5**

KWS 1 silver anodised	<b>.31</b>
KWS 2 nickel silver anodised	<b>.32</b>
KWS 3 gold anodised	<b>.33</b>
KWS 5 dark bronze anodised	<b>.37</b>

**aluminium**

coloured plastic-coated	<b>.70</b>
-------------------------	------------

unit	6 pieces
------	----------

**Piece weight**

aluminium <b>4592..</b>	0.120 kg
-------------------------	----------

with flat saddle and stair bolt M10x80

**Mounting**

These handrail brackets are only suitable for vertical mounting. The distance between the brackets should be between 800 - 1200 mm depending on the load.

**4590..**

for 55 mm distance

**4591..**

for 75 mm distance

**4592..**

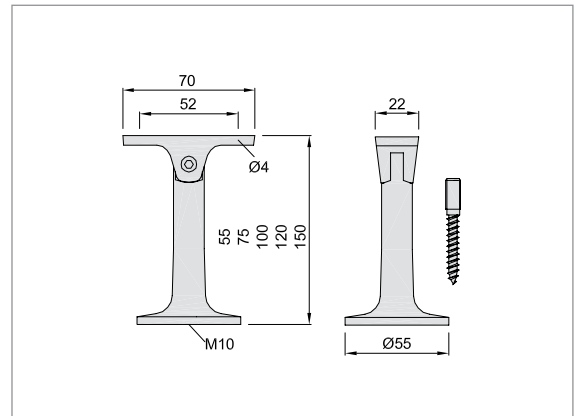
for 100 mm distance

**4593..**

for 120 mm distance

**4594..**

for 150 mm distance



**Standard design**

**aluminium machined according to E 5**

KWS 1 silver anodised	<b>.31</b>
KWS 2 nickel silver anodised	<b>.32</b>
KWS 3 gold anodised	<b>.33</b>
KWS 5 dark bronze anodised	<b>.37</b>

**aluminium**

coloured plastic-coated	<b>.70</b>
-------------------------	------------

unit	6 pieces
------	----------

**Piece weight**

aluminium <b>4597..</b>	0.120 kg
-------------------------	----------

with flat saddle and two countersunk screw holes for screw fixing

**Mounting**

These handrail brackets are only suitable for vertical mounting. The distance between the brackets should be between 800 - 1200 mm depending on the load.

**4595..**

for 55 mm distance

**4596..**

for 75 mm distance

**4597..**

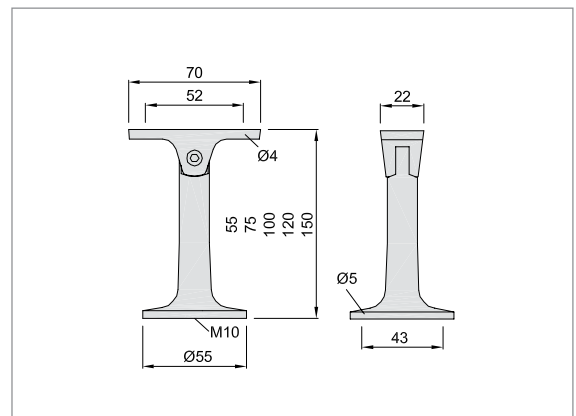
for 100 mm distance

**4598..**

for 120 mm distance

**4599..**

for 150 mm distance



**Order example**

Piece	Part no.	Finish no.
... Piece	<b>4590</b>	<b>.31</b>



**7572..**

for Ø 35 x 1.5 mm tube

**7573..**

for Ø 40 x 2.0 mm tube

**7574..**

for Ø 42.4 x 2.0 mm tube (1.25")

**7K73..**

for Ø 35 x 1.5 mm tube / Ø 35 wood

**7K74..**

for Ø 40 x 2.0 mm tube / Ø 40 wood

**7H73..**

for Ø 35 mm wood

**7H74..**

for Ø 40 mm wood

**7H75..**

for Ø 50 mm wood

**Standard design**

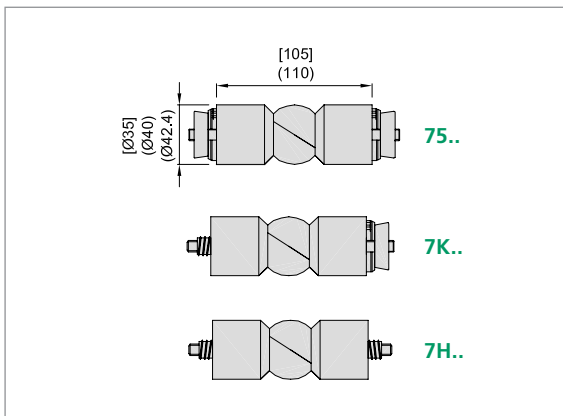
stainless steel

brushed

.82



ball-and-socket joint adjustable three-dimensionally of 90-180 degrees for tube with clamping element of aluminium and for wood with threaded insert of brass.



**7507..**

for Ø 35 x 1.5 mm tube

**7508..**

for Ø 40 x 2.0 mm tube

**7509..**

for Ø 42.4 x 2.0 mm tube (1.25")

**7H07..**

for Ø 35 mm wood

**7H08..**

for Ø 40 mm wood

**7H10..**

for Ø 50 mm wood

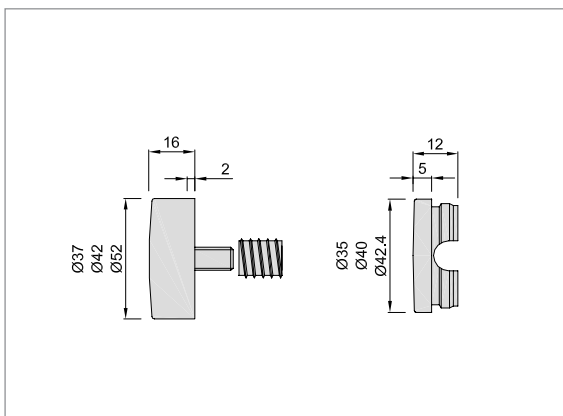
end caps for wood and tube

**Standard design**

stainless steel

brushed

.82



**Order example**

Piece	Part no.	Finish no.
... Piece	7572	.82

**Standard design**

stainless steel	
brushed	.82
polished	.83

**Piece weight**

stainless steel	0.170 kg
-----------------	----------



**7201..**

with bores holes on the side

**7202..**

with outer bores holes

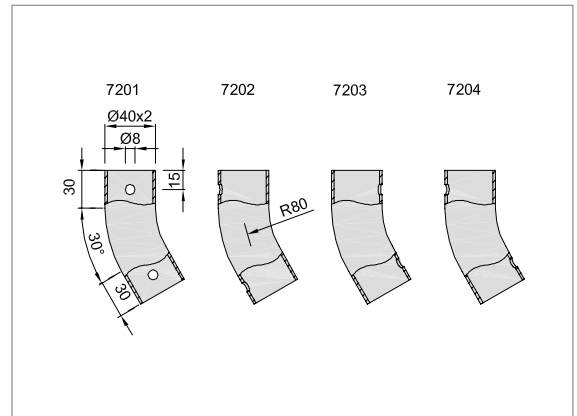
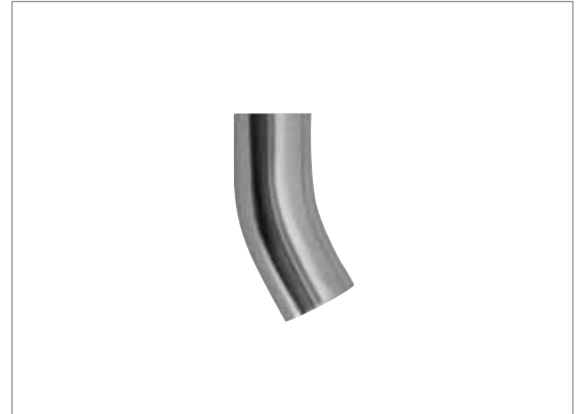
**7203..**

with inner bore holes

**7204..**

with inner and outer bores holes

stainless steel tube  
Ø 40 x 2.0 mm - 30° bend



**Order example**

Piece	Part no.	Finish no.
... Piece	7201	.82



**7211..**

with bores holes on the side

**7212..**

with outer bores holes

**7213..**

with inner bore holes

**7214..**

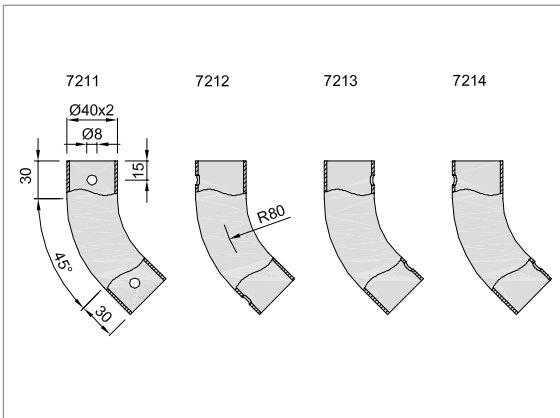
with inner and outer bores holes

**Standard design**

stainless steel	
brushed	<b>.82</b>
polished	<b>.83</b>

**Piece weight**

stainless steel	0.190 kg
-----------------	----------



stainless steel tube  
Ø 40 x 2.0 mm - 45° bend



**7221..**

with bores holes on the side

**7222..**

with outer bores holes

**7223..**

with inner bore holes

**7224..**

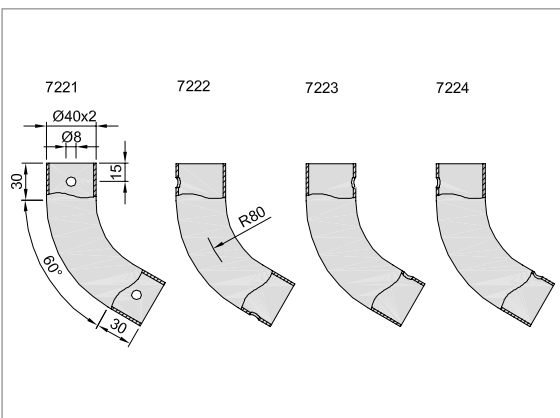
with inner and outer bores holes

**Standard design**

stainless steel	
brushed	<b>.82</b>
polished	<b>.83</b>

**Piece weight**

stainless steel	0.240 kg
-----------------	----------



stainless steel tube  
Ø 40 x 2.0 mm - 60° bend

**Order example**

Piece	Part no.	Finish no.
... Piece	<b>7211</b>	<b>.82</b>

**Standard design**

<b>stainless steel</b>	
brushed	.82
polished	.83

**Piece weight**

stainless steel	0.310 kg
-----------------	----------



**7231..**

with bores holes on the side

**7232..**

with outer bores holes

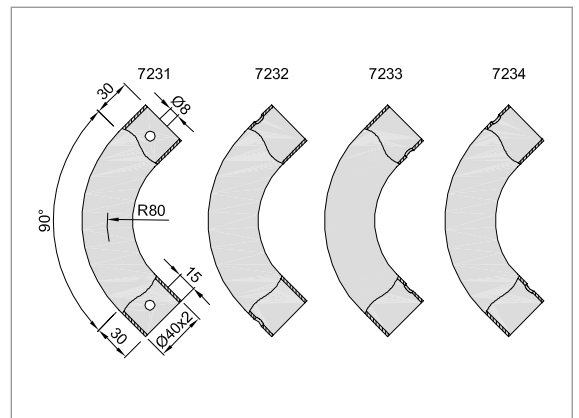
**7233..**

with inner bore holes

**7234..**

with inner and outer bores holes

stainless steel tube  
Ø 40 x 2.0 mm - 90° bend



**Standard design**

<b>stainless steel</b>	
brushed	.82
polished	.83

**Piece weight**

stainless steel	0.380 kg
-----------------	----------



**7241..**

with bores holes on the side

**7242..**

with outer bores holes

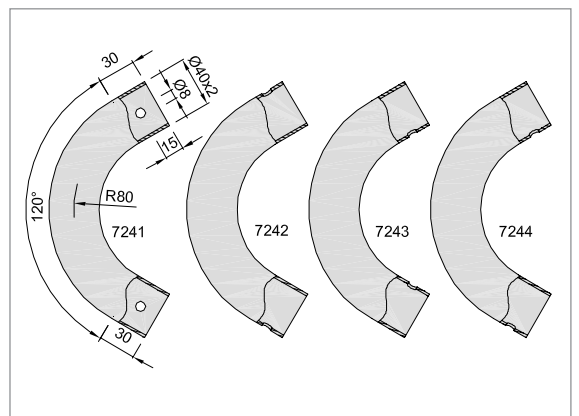
**7243..**

with inner bore holes

**7244..**

with inner and outer bores holes

stainless steel tube  
Ø 40 x 2.0 mm - 120° bend



**Order example**

Piece	Part no.	Finish no.
... Piece	7231	.82



**7251..**

tube bend left

**7252..**

tube bend right

stainless steel tube  
Ø 40 x 2.0 mm - 90° double  
bend offset 90°

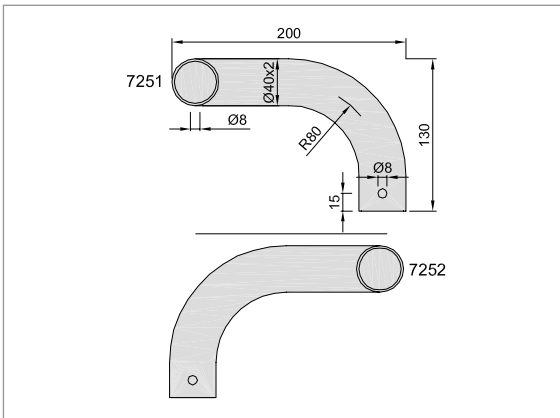
Fig. depicts right bend

**Standard design**

stainless steel	
brushed	<b>.82</b>
polished	<b>.83</b>

**Piece weight**

stainless steel	0.520 kg
-----------------	----------



**7261..**

with bores holes on the side

**7262..**

with outer bores holes

**7263..**

with inner bore holes

**7264..**

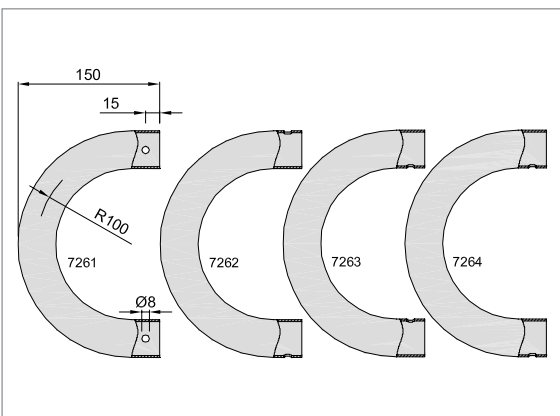
with inner and outer bores holes

**Standard design**

stainless steel	
brushed	<b>.82</b>
polished	<b>.83</b>

**Piece weight**

stainless steel	0.630 kg
-----------------	----------



stainless steel tube  
Ø 40 x 2.0 mm - 180° bend  
radius 100 mm

**Order example**

Piece	Part no.	Finish no.
... Piece	<b>7251</b>	<b>.82</b>

**Standard design**

<b>stainless steel</b>	
brushed	.82
polished	.83

**Piece weight**

stainless steel	1.280 kg
-----------------	----------



**7271..**

with bores holes on the side

**7272..**

with outer bores holes

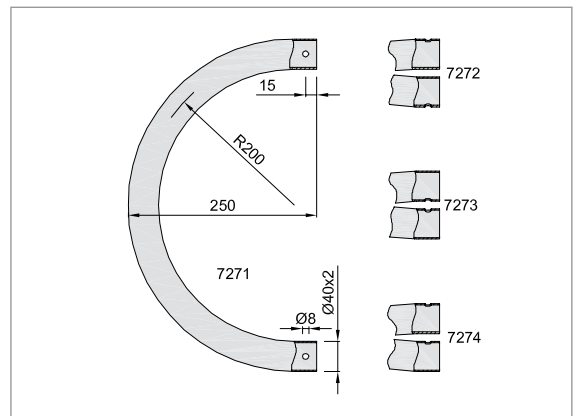
**7273..**

with inner bore holes

**7274..**

with inner and outer bores holes

stainless steel tube  
Ø 40 x 2.0 mm - 180° bend  
radius 200 mm



**Standard design**

<b>stainless steel</b>	
brushed	.82
polished	.83

**Piece weight**

stainless steel	1,990 kg
-----------------	----------



**7301..**

with bores holes on the side

**7302..**

with outer bores holes

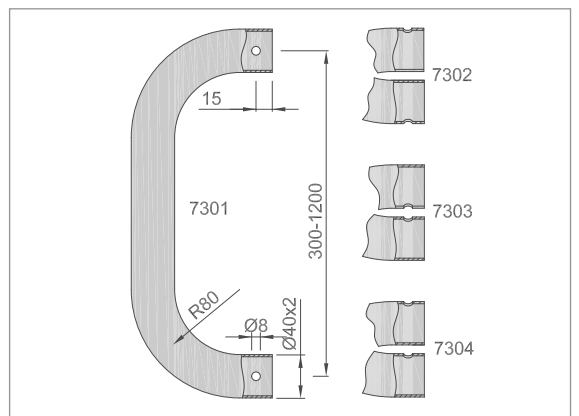
**7303..**

with inner bore holes

**7304..**

with inner and outer bores holes

stainless steel tube  
Ø 40 x 2.0 mm - 180° double  
bend radius 80 mm



**Order example**

Piece	Part no.	Finish no.
... Piece	7271	.82



**7022..**

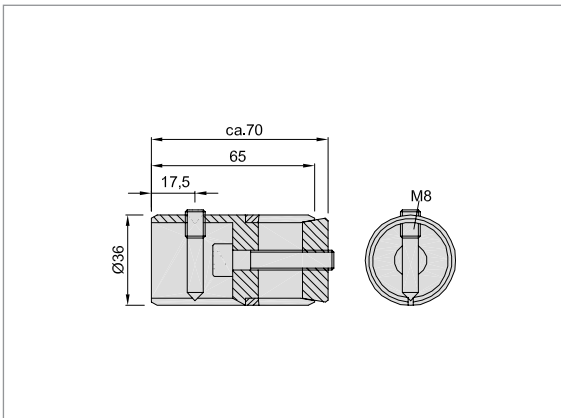
connection sleeve for  
Ø 40 x 2.0 mm tube with  
clamping piece

**Standard design**

<b>stainless steel</b>	
natural finish	<b>.80</b>

**Piece weight**

stainless steel	0.280 kg
-----------------	----------



**7011..**

65 mm long  
connection sleeve for  
Ø 40 x 2.0 mm tube  
with two screws

**Standard design**

<b>stainless steel</b>	
natural finish	<b>.80</b>

**Piece weight**

stainless steel	<b>7011..</b>	0.170 kg
	<b>7020..</b>	0.100 kg
	<b>7021..</b>	0.190 kg

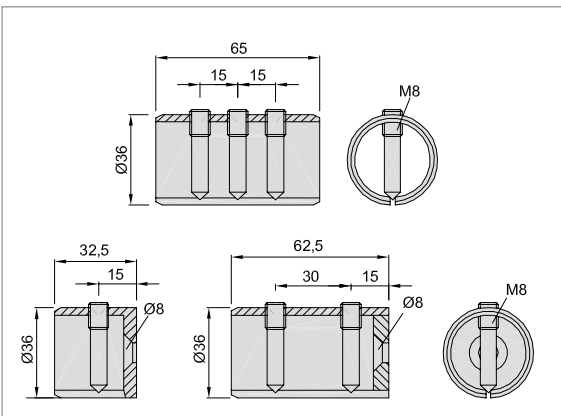


**7020..**

32.5 mm long  
connecting sleeve for  
Ø 40 x 2.0 mm tube with  
one screw

**7021..**

62.5 mm long  
connecting sleeve for  
Ø 40 x 2.0 mm tube with  
two screws



**Order example**

Piece	Part no.	Finish no.
... Piece	<b>7022</b>	<b>.80</b>

**Standard design**

<b>stainless steel</b>	
brushed	<b>.82</b>
polished	<b>.83</b>

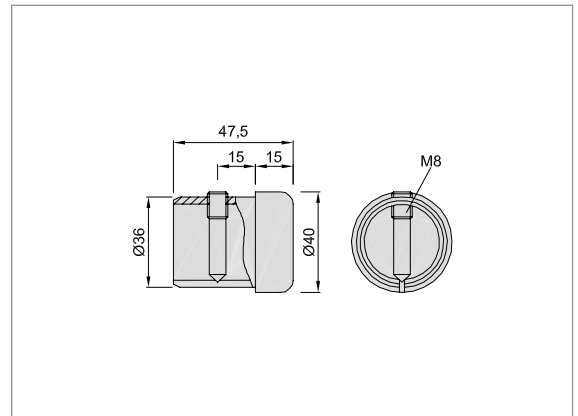
**Piece weight**

stainless steel	0.190 kg
-----------------	----------



**7040..**

end plug for  
Ø 40 x 2.0 mm tube



**Standard design**

<b>stainless steel</b>	
brushed	<b>.82</b>
polished	<b>.83</b>

**Piece weight**

stainless steel	<b>7030..</b>	0.130 kg
	<b>7036..</b>	0.061 kg



**7030..**

90° - for Ø 40 / Ø 40 tube -  
screwed lengthwise

**7031..**

90° - for Ø 40 / Ø 40 tube -  
screwed crosswise

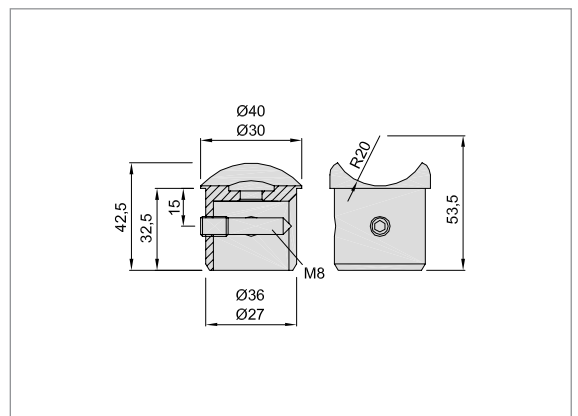
**7036..**

90° - for Ø 40 / Ø 30 tube -  
screwed lengthwise

**7037..**

90° - for Ø 40 / Ø 30 tube -  
screwed crosswise

stainless steel mitred joint



**Order example**

Piece	Part no.	Finish no.
... Piece	<b>7040</b>	<b>.82</b>



**7032..**

60° - for Ø 40 / Ø 40 tube -  
screwed lengthwise / acute angle

**7033..**

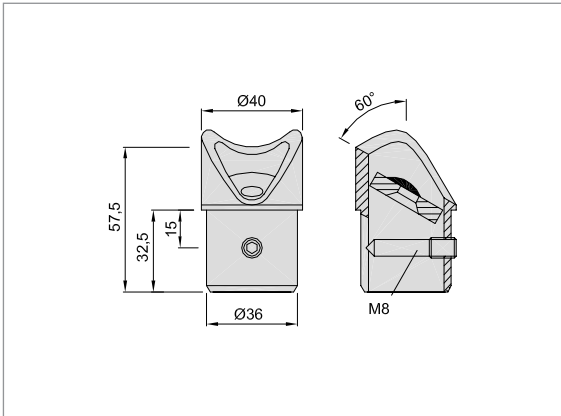
60° - for Ø 40 / Ø 40 tube -  
screwed lengthwise / obtuse angle

**Standard design**

<b>stainless steel</b>	
brushed	<b>.82</b>
polished	<b>.83</b>

**Piece weight**

stainless steel	0.190 kg
-----------------	----------



**7034..**

up to max. 50° adjustable right  
or left for Ø 40 / Ø 40 tube

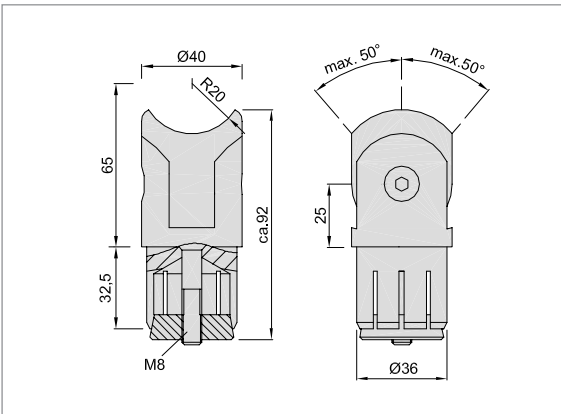
stainless steel mitred joint

**Standard design**

<b>stainless steel</b>	
brushed	<b>.82</b>
polished	<b>.83</b>

**Piece weight**

stainless steel	0.580 kg
-----------------	----------



**Order example**

Piece	Part no.	Finish no.
... Piece	<b>7032</b>	<b>.82</b>

**Standard design**

<b>stainless steel</b>	
brushed	<b>.82</b>
polished	<b>.83</b>

**Piece weight**

stainless steel	0.350 kg
-----------------	----------



**7050..**

for 8 mm

**7051..**

for 10 mm

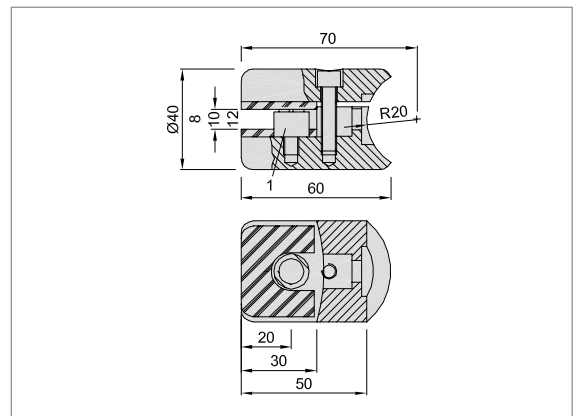
**7052..**

for 12 mm

stainless steel panel holder for  
Ø 40 tube

**Note**

In case of lateral pane holders we recommend to use the fastening bolts (1) included in the scope of supply.



**Standard design**

<b>stainless steel</b>	
brushed	<b>.82</b>
polished	<b>.83</b>

**Piece weight**

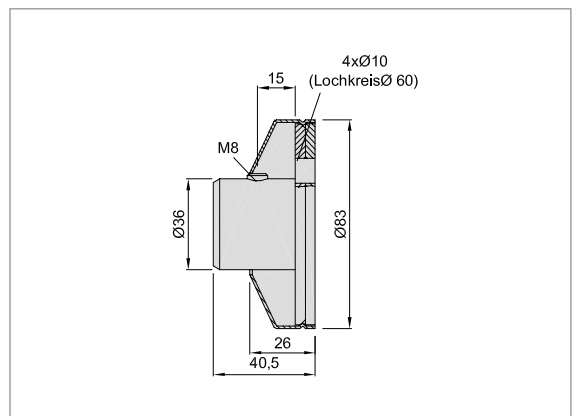
stainless steel	0.400 kg
-----------------	----------



**7063..**

wall rosette with cover cap

stainless steel wall rosette for  
Ø 40 tube



**Order example**

Piece	Part no.	Finish no.
... Piece	<b>7050</b>	<b>.82</b>



**7064..**

floor rosette with cover cap

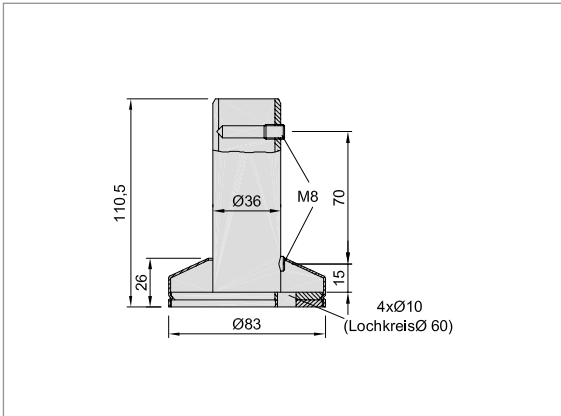
stainless steel floor rosette for  
Ø 40 tube

**Standard design**

<b>stainless steel</b>	
brushed	<b>.82</b>
polished	<b>.83</b>

**Piece weight**

stainless steel	0.570 kg
-----------------	----------



**7065..**

floor anchor without rosette and  
cover cap

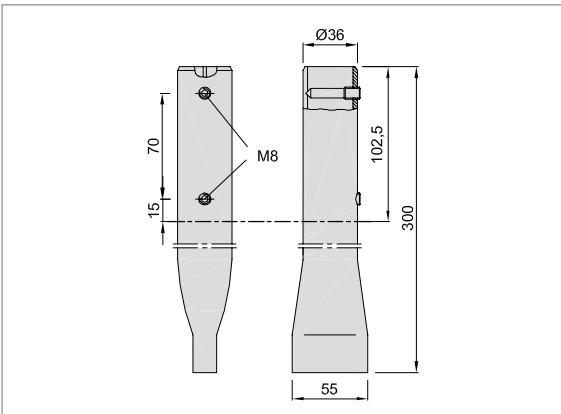
stainless steel floor anchor for  
Ø 40 tube

**Standard design**

<b>stainless steel</b>	
natural finish	<b>.80</b>

**Piece weight**

stainless steel	0.750 kg
-----------------	----------



**Order example**

Piece	Part no.	Finish no.
... Piece	<b>7064</b>	<b>.82</b>

**Standard design**

stainless steel	
brushed	.82
polished	.83

**Piece weight**

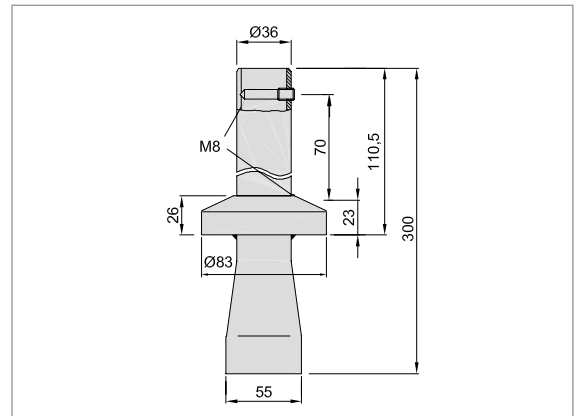
stainless steel	1.050 kg
-----------------	----------



**7066..**

floor anchor with rosette and cover cap

stainless steel floor anchor for Ø 40 tube



**Standard design**

stainless steel	
brushed	.82
polished	.83

**Piece weight**

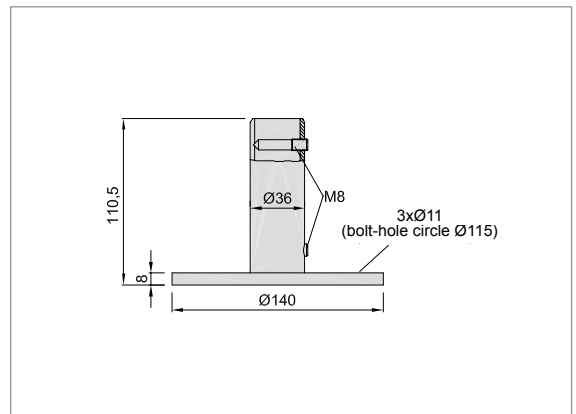
stainless steel	1.120 kg
-----------------	----------



**7067..**

floor anchor for screwing on

stainless steel floor anchor for Ø 40 tube



**Order example**

Piece	Part no.	Finish no.
... Piece	7066	.82



### KWS Modular System for Floor Rails

The time-tested KWS modular system of stainless steel – well-known from the area of door pulls – also offers sturdy solutions for floor rails. For this all components are simply screwed together and the cutting edges of the tubes including a tolerance zone of 5 mm are covered. On request all components can be assembled in the plant and the tubes cut so that simple and custom-fit mounting at the customer's is possible.



Page 46



Page 46



Page 47



Page 47



Page 48



Page 48



Page 49



Page 49



**8399..**

Ø 35 x 1.5 mm tube

**8308..**

Ø 40 x 2 mm tube

**Standard design**

stainless steel

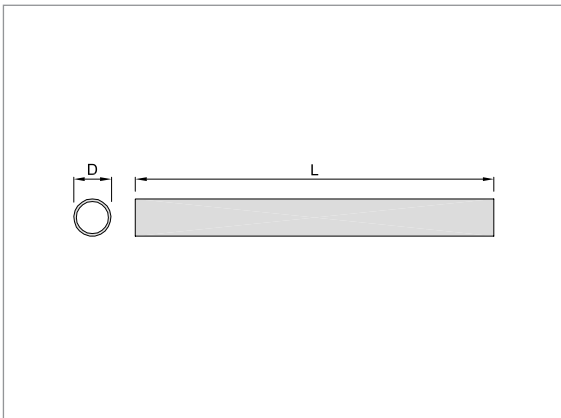
(length: 2000 mm, 3000 mm or cut to size)

brushed

**.82**

polished

**.83**



**7507..**

for Ø 35 x 1.5 mm tube

**7508..**

for Ø 40 x 2.0 mm tube

**Standard design**

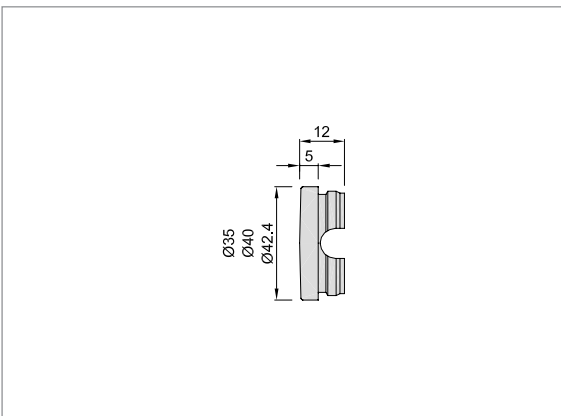
stainless steel

brushed

**.82**



end caps for tube  
stainless steel



**Order example**

Piece	Part no.	Finish no.
... Piece	<b>8399</b>	<b>.82</b>

**Standard design**

<b>stainless steel</b>	
brushed	<b>.82</b>
polished	<b>.83</b>

**Piece weight**

stainless steel	0.310 kg
-----------------	----------



**7231..**

with bores holes on the side

**7232..**

with outer bores holes

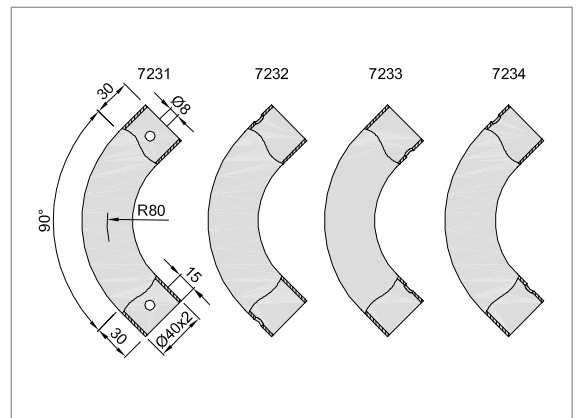
**7233..**

with inner bore holes

**7234..**

with inner and outer bores holes

stainless steel tube  
 Ø 40 x 2.0 mm - 90° bend



**Standard design**

<b>stainless steel</b>	
brushed	<b>.82</b>



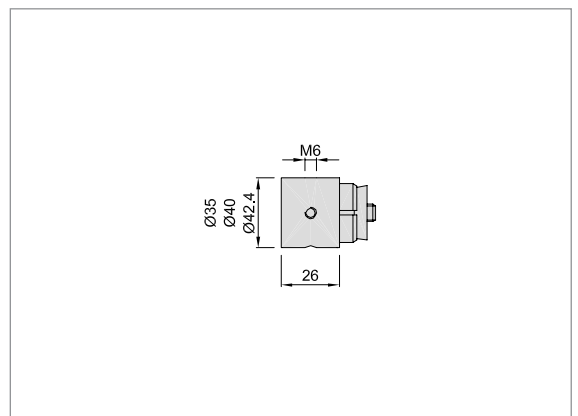
**7527..**

for Ø 35 x 1.5 mm tube

**7528..**

for Ø 40 x 2.0 mm tube

End sleeve with two bore holes  
 for floor brackets (M6) of stainless  
 steel, clamping element of alu-  
 minium.



**Order example**

Piece	Part no.	Finish no.
... Piece	<b>7231</b>	<b>.82</b>



**7572..**

for Ø 35 x 1.5 mm tube

**7573..**

for Ø 40 x 2.0 mm tube

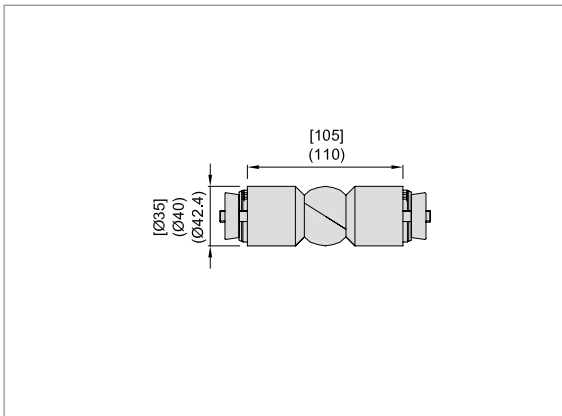
ball-and-socket joint three-dimensional adjustable from 90-180 degrees of stainless steel, clamping element of aluminium.

**Standard design**

stainless steel

brushed

**.82**



**7522..**

for Ø 35 x 1.5 mm tube

**7523..**

for Ø 40 x 2.0 mm tube

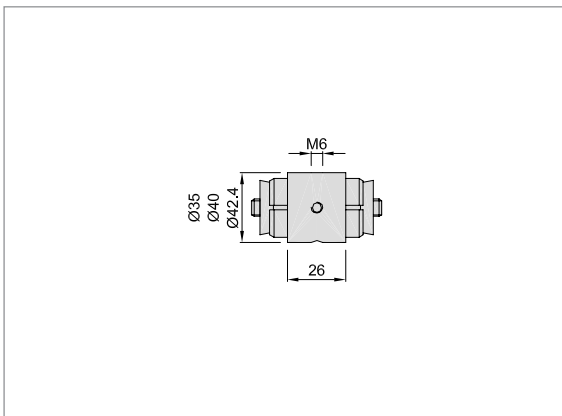
connection sleeve with two bore holes for floor supports (M6) of stainless steel, clamping element of aluminium.

**Standard design**

stainless steel

brushed

**.82**



**Order example**

Piece	Part no.	Finish no.
... Piece	<b>7572</b>	<b>.82</b>

Standard design

stainless steel	
brushed	.82



7459..

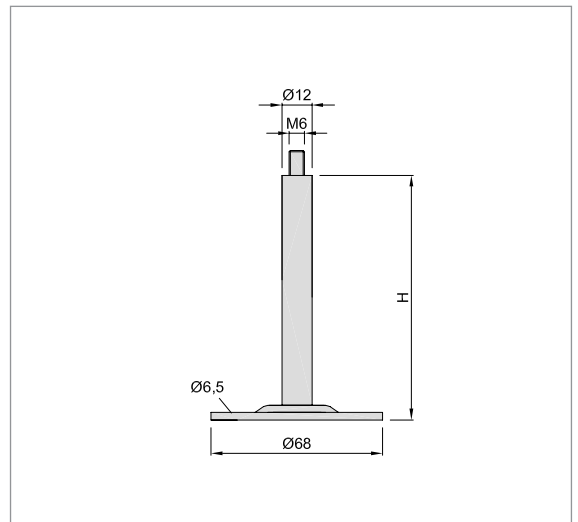
H

150

7460..

180

bracket for wall or floor



Standard design

stainless steel	
brushed	.82
polished	.83

unit	6 pieces
------	----------

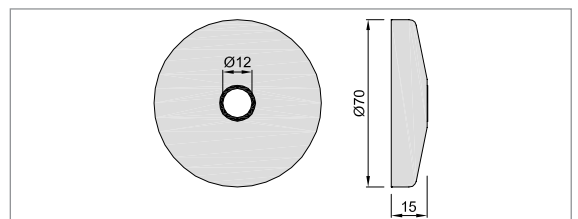
Piece weight

stainless steel	0.044 kg
-----------------	----------



4600..

cover cap for 7459.. 7460..



Order example

Piece	Part no.	Finish no.
... Piece	7459	.82



### KWS Modular System for Coat Racks

If coat racks are to be custom-made, the KWS modular system of stainless steel provides a simple and precise solution. We are able to realise whatever application you have in mind and hat racks can, of course, be incorporated. Ready made kits can be manufactured to customers requirements.



Page 52



Page 52



Page 53



Page 53



Page 54



Page 54



Page 55



Page 55



**8806..**

Ø 25 x 1.5 mm tube

**8808..**

Ø 30 x 1.5 mm tube

**8399..**

Ø 35 x 1.5 mm tube

**Standard design**

**stainless steel**

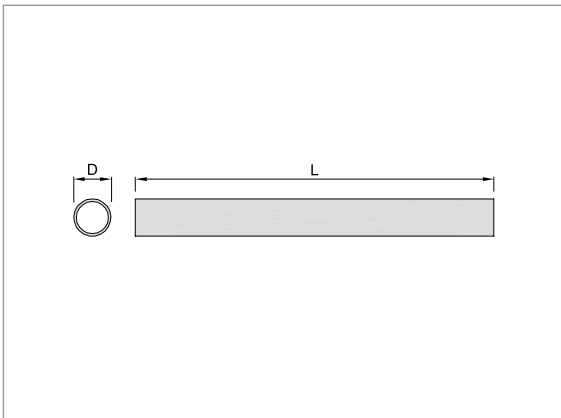
(length: 2000 mm, 3000 mm or cut to size)

brushed

**.82**

polished

**.83**



**7505..**

for Ø 25 x 1.5 mm tube

**7506..**

for Ø 30 x 1.5 mm tube

**7507..**

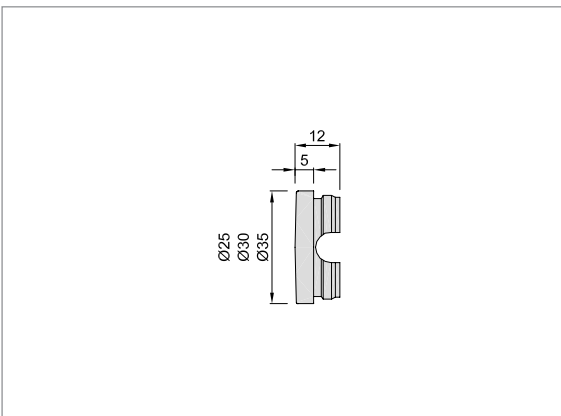
for Ø 35 x 1.5 mm tube

**Standard design**

**stainless steel**

brushed

**.82**



end caps for tube  
of stainless steel

**Order example**

Piece	Part no.	Finish no.
... Piece	<b>8399</b>	<b>.82</b>

**Standard design**

stainless steel

brushed .82



**7551..**

for Ø 25 x 1.5 mm tube

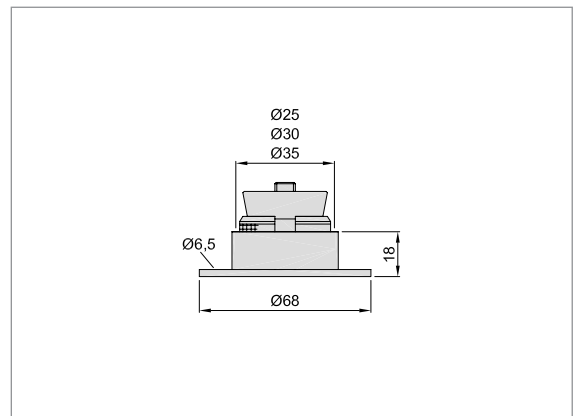
**7552..**

for Ø 30 x 1.5 mm tube

**7553..**

for Ø 35 x 1.5 mm tube

Wall/floor end sleeve of stainless steel, clamping element of aluminium.



**Standard design**

stainless steel

brushed .82



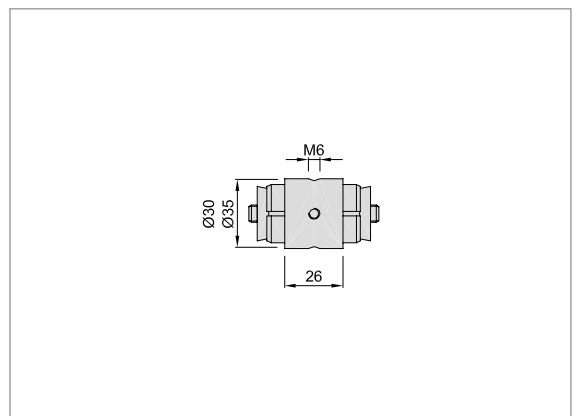
**7531..**

for Ø 30 x 1.5 mm tube

**7532..**

for Ø 35 x 1.5 mm tube

connection sleeve with two bore holes of stainless steel, clamping element of aluminium.



**Order example**

Piece	Part no.	Finish no.
... Piece	7551	.82



**7536..**

for Ø 30 x 1.5 mm tube

**7537..**

for Ø 35 x 1.5 mm tube

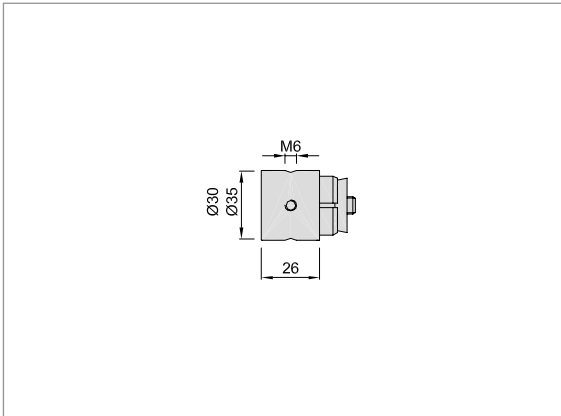
End sleeve with three bore holes of stainless steel, clamping element of aluminium.

**Standard design**

stainless steel

brushed

**.82**



**81G2..**

saddle for Ø	saddle for Ø
25 x 1.5	30 x 1.5

**81G3..**

25 x 1.5	35 x 1.5
----------	----------

**82G2..**

30 x 1.5	30 x 1.5
----------	----------

**82G3..**

30 x 1.5	35 x 1.5
----------	----------

**82G4..**

30 x 1.5	40 x 2.0
----------	----------

**83G3..**

35 x 1.5	35 x 1.5
----------	----------

**83G4..**

35 x 1.5	40 x 2.0
----------	----------

**84G4..**

40 x 2.0	40 x 2.0
----------	----------

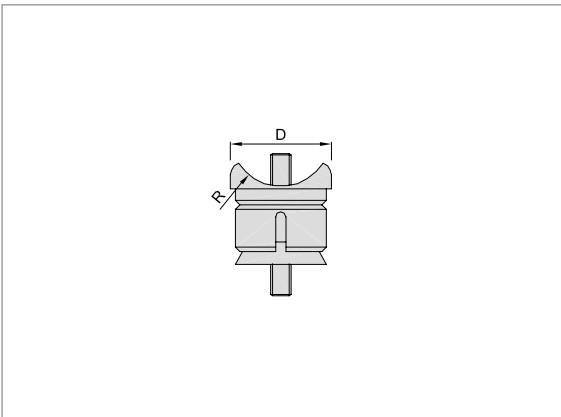
mitred bracket for T and cross joints (incl. riveting nut)  
Clamping element of aluminium.

**Standard design**

stainless steel

brushed

**.82**



**Order example**

Piece	Part no.	Finish no.
... Piece	<b>7536</b>	<b>.82</b>

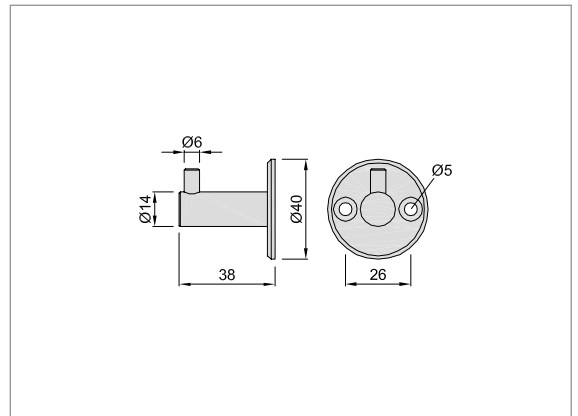
Standard design

stainless steel	
brushed	.82
polished	.83



7501..

coat hook  
for screwing on



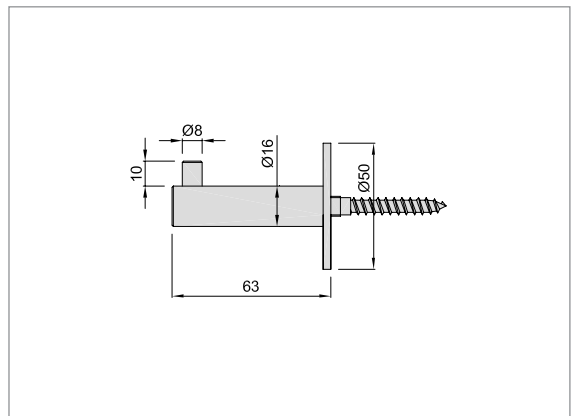
Standard design

stainless steel	
brushed	.82
polished	.83



7502..

coat hook  
with stair bolt M8x70



Order example

Piece	Part no.	Finish no.
... Piece	7502	.82



### Supports for toilet partition walls

On the following pages you will find our wide range of partition wall supports of aluminium, steel and stainless steel. Here we set a high value on sturdy design and specifically recommend our supports of stainless steel for wet areas. Furthermore, some supports provide benefits with regard to adjustment possibilities and mounting. Please find further information in the technical notes.

## Technical note

The different types of partition wall supports:

In the partition wall support range we differentiate by the height, the construction type and the saddle of the support:

- ***flat saddle***
- ***U-shaped saddle***
- ***L-shaped saddle***

Prior to mounting the clearance between floor and partition wall should be determined as an additional selection criteria. With the following supports you can also adjust the height retrospectively (in tolerances of 25 mm):

**4231.. – 4233..**

**4241.. – 4243..**

**4251.. – 4253..**

**4101.. – 4103..**

**4290..**

Things to be taken into account when mounting partition wall supports:

The issue when mounting is primarily to align several supports. This is why some models have an eccentric disc so that the support can still be aligned after mounting. (compare **4201.. 4211.. 4221.. 4231.. 4241.. 4251..**)

# KWS Partition Wall Supports



Page 60



Page 61



Page 61



Page 62



Page 63



Page 63



Page 64



Page 64



Page 65



Page 65



Page 66



Page 66



Page 67



Page 67



Page 68



Page 68



Page 69



Page 70



Page 70



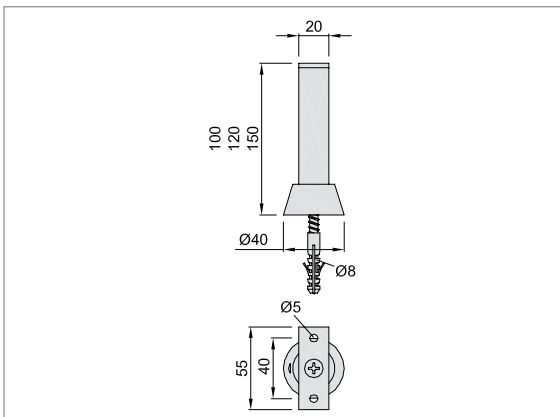
Page 71



Page 72



Page 72



### 4201..

100 mm high

### 4202..

120 mm high

### 4203..

150 mm high

#### Mounting

Screw floor rosette with inserted washer on the floor, insert support and secure with clamping screw. To offset possible deviations when boring the floor plug hole every partition wall support is supplied with an additional eccentric disc, which is used instead of the washer. Deviations of up to 4 mm from the centre can be equalised. The support can be shortened by 5 or 10 mm in height to offset floor unevenness. With every packaging unit mounting instructions are included.

#### Standard design

##### aluminium machined according to E 5

KWS 1 silver anodised	<b>.31</b>
KWS 2 nickel silver anodised	<b>.32</b>

##### aluminium

coloured plastic-coated	<b>.70</b>
-------------------------	------------

##### stainless steel

brushed	<b>.82</b>
polished	<b>.83</b>

unit	2 pieces
------	----------

#### Piece weight

aluminium	0.140 kg
stainless steel	0.330 kg



with flat saddle  
for screwing on  
with fixing material

#### Order example

Piece	Part no.	Finish no.
... Piece	<b>4201</b>	<b>.31</b>

**Standard design**

**aluminium machined according to E 5**

KWS 1 silver anodised	<b>.31</b>
KWS 2 nickel silver anodised	<b>.32</b>

**aluminium**

coloured plastic-coated	<b>.70</b>
-------------------------	------------

**stainless steel**

brushed	<b>.82</b>
polished	<b>.83</b>

unit	2 pieces
------	----------

**Piece weight**

aluminium	0.150 kg
stainless steel	0.350 kg



with L-shape saddle  
for screwing on  
with fixing material

**4211..**

100 mm high

**4212..**

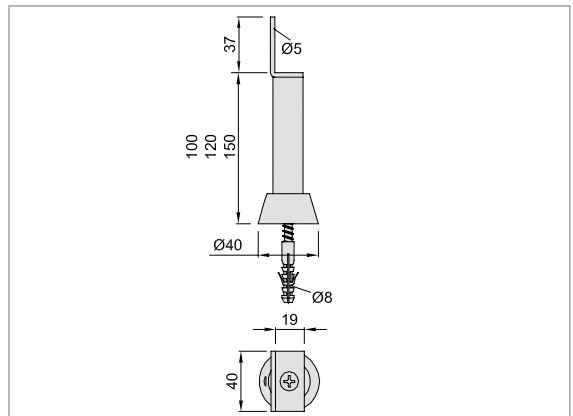
120 mm high

**4213..**

150 mm high

**Mounting**

Screw floor rosette with inserted washer on the floor, insert support and secure with clamping screw. To offset possible deviations when boring the floor plug hole every partition wall support is supplied with an additional eccentric disc, which is used instead of the washer. Deviations of up to 4 mm from the centre can be equalised. The support can be shortened by 5 or 10 mm in height to offset floor unevenness. With every packaging unit mounting instructions are included.



**Standard design**

**aluminium machined according to E 5**

KWS 1 silver anodised	<b>.31</b>
KWS 2 nickel silver anodised	<b>.32</b>

**aluminium**

coloured plastic-coated	<b>.70</b>
-------------------------	------------

**stainless steel**

brushed	<b>.82</b>
polished	<b>.83</b>

unit	2 pieces
------	----------

**Piece weight**

aluminium	0.160 kg
stainless steel	0.390 kg



with U-shaped saddle for 19 mm wall  
for screwing on  
with fixing material

**4221..**

100 mm high

**4222..**

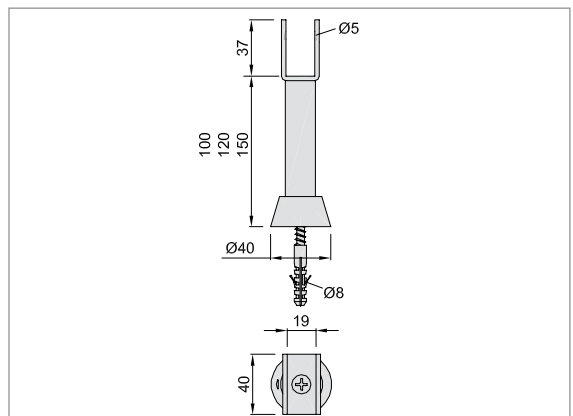
120 mm high

**4223..**

150 mm high

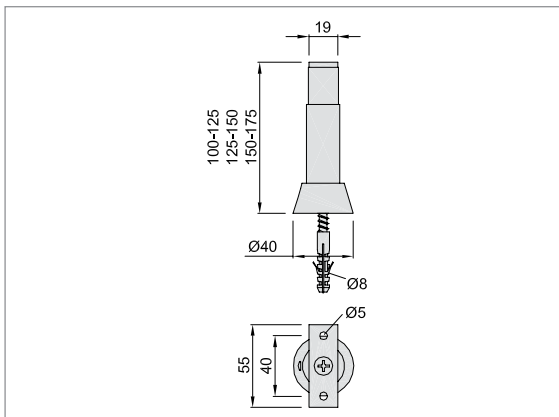
**Mounting**

Screw floor rosette with inserted washer on the floor, insert support and secure with clamping screw. To offset possible deviations when boring the floor plug hole every partition wall support is supplied with an additional eccentric disc, which is used instead of the washer. Deviations of up to 4 mm from the centre can be equalised. The support can be shortened by 5 or 10 mm in height to offset floor unevenness. With every packaging unit mounting instructions are included.



**Order example**

Piece	Part no.	Finish no.
... Piece	<b>4221</b>	<b>.31</b>



## 4231..

100 - 125 mm high

## 4232..

125 - 150 mm high

## 4233..

150 - 175 mm high

### Mounting

Screw floor sleeve with inserted washer on the floor, insert support, turn it by means of a spanner to the desired height and tighten with round nut, secure support with clamping screw.

To offset possible deviations when boring the floor plug hole every partition wall support is supplied with an additional eccentric disc, which is used instead of the washer. Deviations of up to 4 mm from the centre can be equalised. With every packaging unit mounting instructions are included.

### Standard design

aluminium machined according to E 5

KWS 1 silver anodised	.31
KWS 2 nickel silver anodised	.32

### aluminium

coloured plastic-coated	.70
-------------------------	-----

### stainless steel

brushed	.82
polished	.83

unit	2 pieces
------	----------

### Piece weight

aluminium	0.190 kg
stainless steel	0.380 kg

with flat saddle  
height adjustable  
for screwing on  
with fixing material



### Order example

Piece	Part no.	Finish no.
... Piece	4231	.31

**Standard design**

**aluminium machined according to E 5**

KWS 1 silver anodised	<b>.31</b>
KWS 2 nickel silver anodised	<b>.32</b>

**aluminium**

coloured plastic-coated	<b>.70</b>
-------------------------	------------

**stainless steel**

brushed	<b>.82</b>
polished	<b>.83</b>

unit	2 pieces
------	----------

**Piece weight**

aluminium	0.200 kg
stainless steel	0.400 kg

with L-shape saddle  
height adjustable  
for screwing on  
with fixing material



**4241..**

100 - 125 mm high

**4242..**

125 - 150 mm high

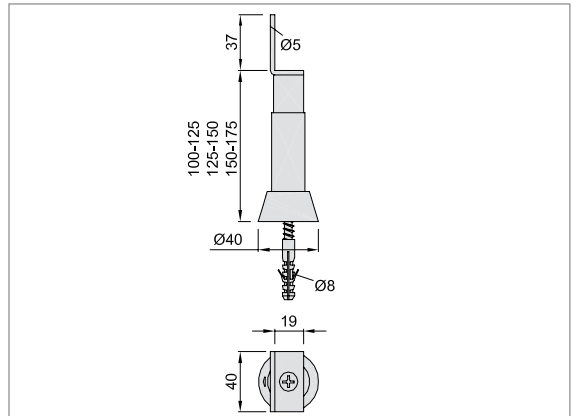
**4243..**

150 - 175 mm high

**Mounting**

Screw floor sleeve with inserted washer on the floor, insert support, turn it by means of a spanner to the desired height and tighten with round nut, secure support with clamping screw.

To offset possible deviations when boring the floor plug hole every partition wall support is supplied with an additional eccentric disc, which is used instead of the washer. Deviations of up to 4 mm from the centre can be equalised. With every packaging unit mounting instructions are included.



**Standard design**

**aluminium machined according to E 5**

KWS 1 silver anodised	<b>.31</b>
KWS 2 nickel silver anodised	<b>.32</b>

**aluminium**

coloured plastic-coated	<b>.70</b>
-------------------------	------------

**stainless steel**

brushed	<b>.82</b>
polished	<b>.83</b>

unit	2 pieces
------	----------

**Piece weight**

aluminium	0.210 kg
stainless steel	0.440 kg

with U-shaped saddle for 19 mm wall  
height adjustable  
for screwing on  
with fixing material



**4251..**

100 - 125 mm high

**4252..**

125 - 150 mm high

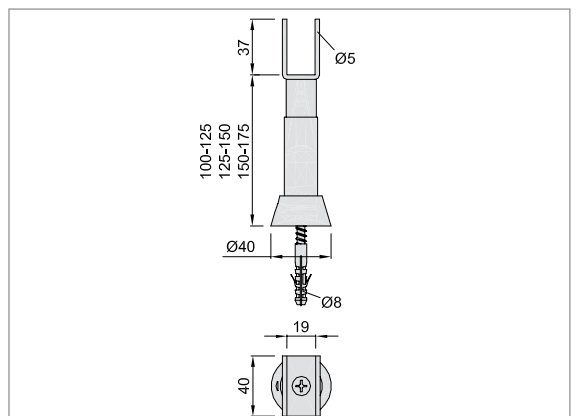
**4253..**

150 - 175 mm high

**Mounting**

Screw floor sleeve with inserted washer on the floor, insert support, turn it by means of a spanner to the desired height and tighten with round nut, secure support with clamping screw.

To offset possible deviations when boring the floor plug hole every partition wall support is supplied with an additional eccentric disc, which is used instead of the washer. Deviations of up to 4 mm from the centre can be equalised. With every packaging unit mounting instructions are included.



**Order example**

Piece	Part no.	Finish no.
... Piece	<b>4251</b>	<b>.31</b>



## 4001..

100 mm high

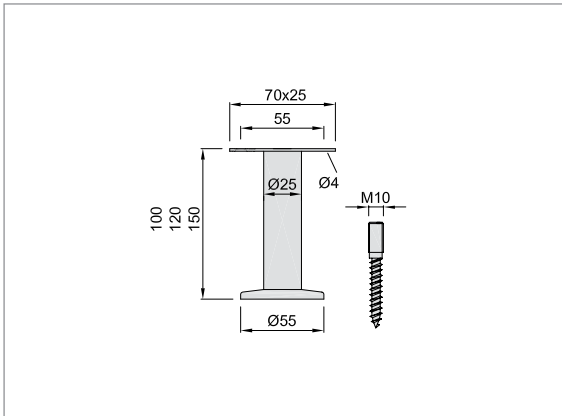
## 4003..

120 mm high

## 4005..

150 mm high

with flat saddle and stair bolt  
M10x80



### Standard design

steel	
black stove enamelled	.03
electro-galvanised	.06
coloured plastic-coated	.70

### aluminium machined according to E 5

KWS 1 silver anodised	.31
KWS 2 nickel silver anodised	.32

### stainless steel

brushed	.82
polished	.83

unit	2 pieces
------	----------

### Piece weight

steel	4001..	0.175 kg
aluminium	4001..	0.190 kg
stainless steel	4001..	0.200 kg



## 4002..

100 mm high

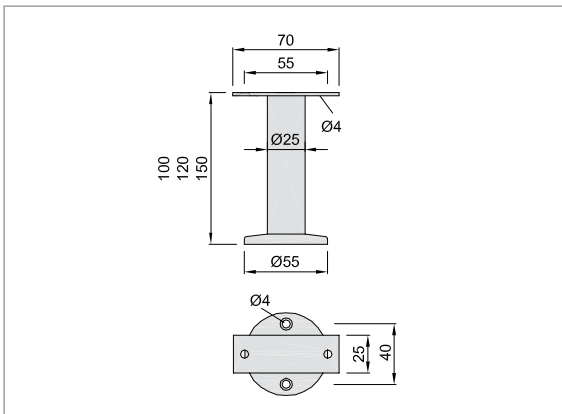
## 4004..

120 mm high

## 4006..

150 mm high

with flat saddle and  
two countersunk screw holes  
for screwing on



### Standard design

steel	
black stove enamelled	.03
electro-galvanised	.06
coloured plastic-coated	.70

### aluminium machined according to E 5

KWS 1 silver anodised	.31
KWS 2 nickel silver anodised	.32

### stainless steel

brushed	.82
polished	.83

unit	2 pieces
------	----------

### Piece weight

steel	4002..	0.115 kg
aluminium	4002..	0.170 kg
stainless steel	4002..	0.130 kg

### Order example

Piece	Part no.	Finish no.
... Piece	4001	.03

**Standard design**

steel	
black stove enamelled	.03
electro-galvanised	.06
coloured plastic-coated	.70

**aluminium machined according to E 5**

KWS 1 silver anodised	.31
KWS 2 nickel silver anodised	.32

**stainless steel**

brushed	.82
polished	.83

unit	2 pieces
------	----------

**Piece weight**

steel	4009..	0.220 kg
aluminium	4009..	0.210 kg
stainless steel	4009..	0.250 kg

**4009..**

100 mm high

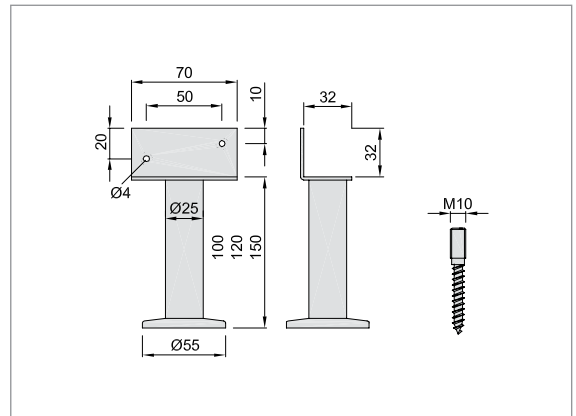
**4011..**

120 mm high

**4013..**

150 mm high

with L-shaped saddle and stair bolt M10x80



**Standard design**

steel	
black stove enamelled	.03
electro-galvanised	.06
coloured plastic-coated	.70

**aluminium machined according to E 5**

KWS 1 silver anodised	.31
KWS 2 nickel silver anodised	.32

**stainless steel**

brushed	.82
polished	.83

unit	2 pieces
------	----------

**Piece weight**

steel	4010..	0.170 kg
aluminium	4010..	0.185 kg
stainless steel	4010..	0.180 kg

**4010..**

100 mm high

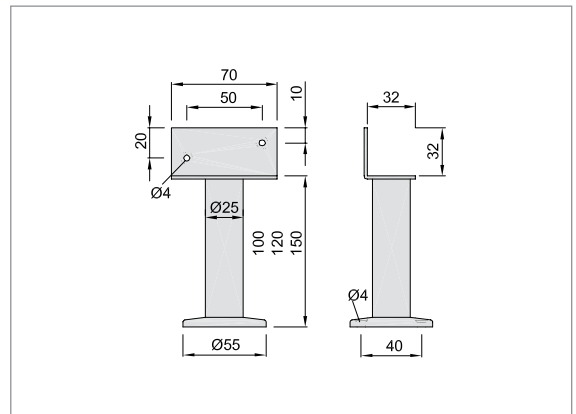
**4012..**

120 mm high

**4014..**

150 mm high

with L-shaped saddle and two countersunk screw holes for screwing on



**Order example**

Piece	Part no.	Finish no.
... Piece	4009	.03



## 4057..

can be used for heights up to 150 mm, with flat saddle and height-adjustable floor end rosette, for grouting in



### Standard design

steel	
black stove enamelled	.03
electro-galvanised	.06
coloured plastic-coated	.70

### stainless steel

brushed	.82
polished	.83

unit	2 pieces
------	----------

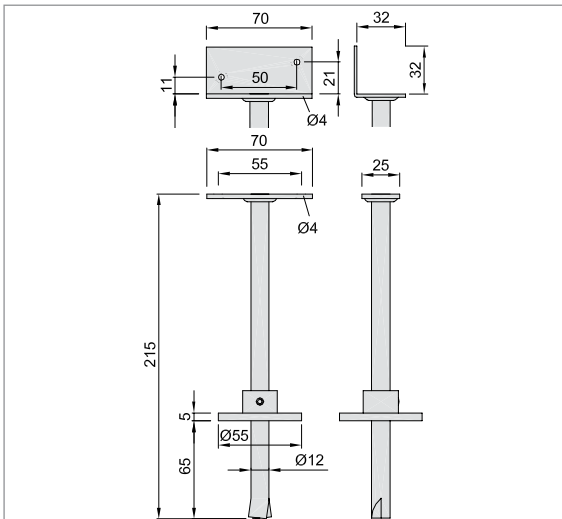
### Piece weight

steel	4057..	0.270 kg
	4058..	0.290 kg
stainless steel	4057..	0.270 kg
	4058..	0.290 kg



## 4058..

can be used for heights up to 150 mm, with L-shaped saddle and height-adjustable floor end rosette, for grouting in



### Order example

Piece	Part no.	Finish no.
... Piece	4057	.03

**Standard design**

steel	
black stove enamelled	.03
electro-galvanised	.06
coloured plastic-coated	.70

**stainless steel**

brushed	.82
polished	.83

unit	2 pieces
------	----------

**Piece weight**

steel	4025..	0.270 kg
stainless steel	4025..	0.270 kg



**4017..**

for 16 mm wall, 100 mm high

**4019..**

for 16 mm wall, 120 mm high

**4021..**

for 16 mm wall, 150 mm high

**4025..**

for 19 mm wall, 100 mm high

**4027..**

for 19 mm wall, 120 mm high

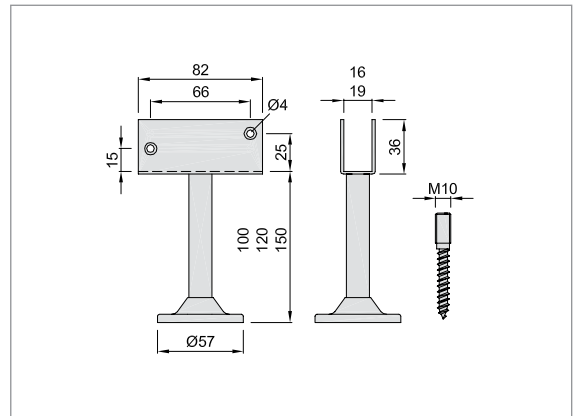
**4029..**

for 19 mm wall, 150 mm high

with U-shaped saddle and stair bolt M10x80

**Note**

of aluminium see article no.  
**4067.. 4167.. 4267.. 4068..**  
**4168.. 4268..**



**Standard design**

steel	
black stove enamelled	.03
electro-galvanised	.06
coloured plastic-coated	.70

**stainless steel**

brushed	.82
polished	.83

unit	2 pieces
------	----------

**Piece weight**

steel	4026..	0.230 kg
stainless steel	4026..	0.230 kg



**4018..**

for 16 mm wall, 100 mm high

**4020..**

for 16 mm wall, 120 mm high

**4022..**

for 16 mm wall, 150 mm high

**4026..**

for 19 mm wall, 100 mm high

**4028..**

for 19 mm wall, 120 mm high

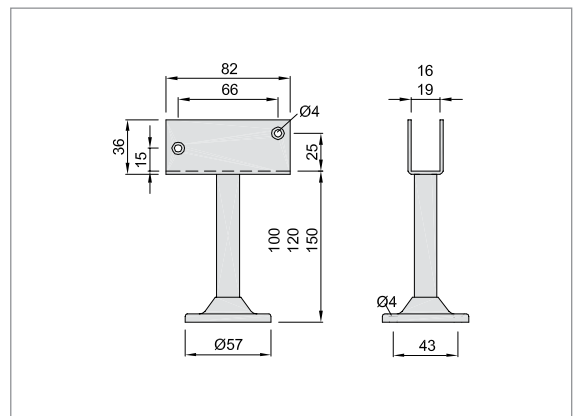
**4030..**

for 19 mm wall, 150 mm high

with U-shaped saddle rosette with two countersunk screw holes for screwing on

**Note**

of aluminium see article no.  
**4069.. 4169.. 4269.. 4170..**  
**4170.. 4270..**



**Order example**

Piece	Part no.	Finish no.
... Piece	4017	.03



## 4059..

18 mm saddle, 100 mm high

## 4159..

18 mm saddle, 120 mm high

## 4259..

18 mm saddle, 150 mm high

## 4060..

30 mm saddle, 100 mm high

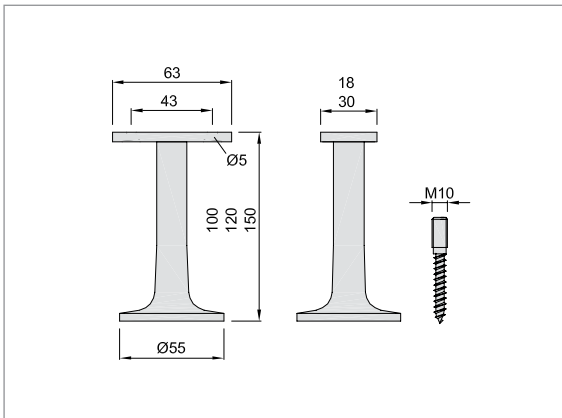
## 4160..

30 mm saddle, 120 mm high

## 4260..

30 mm saddle, 150 mm high

with flat saddle and stair bolt  
M10x80 for plugging



## 4061..

100 mm high

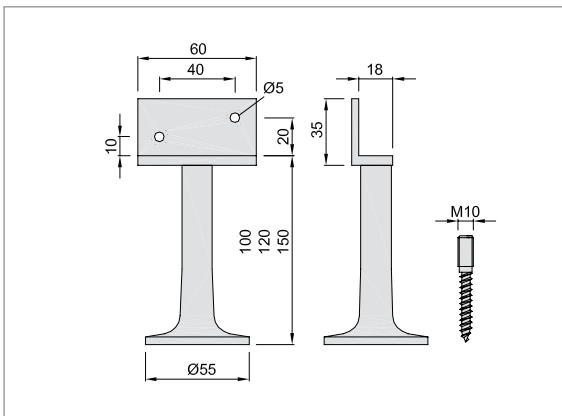
## 4161..

120 mm high

## 4261..

150 mm high

with L-shaped saddle and  
stair bolt M10x80 for plugging



### Standard design

#### aluminium machined according to E 5

KWS 1 silver anodised	.31
KWS 2 nickel silver anodised	.32

#### aluminium

coloured plastic-coated	.70
-------------------------	-----

unit	2 pieces
------	----------

#### Piece weight

aluminium 4059..	0.120 kg
------------------	----------

### Standard design

#### aluminium machined according to E 5

KWS 1 silver anodised	.31
KWS 2 nickel silver anodised	.32

#### aluminium

coloured plastic-coated	.70
-------------------------	-----

unit	2 pieces
------	----------

#### Piece weight

aluminium 4061..	0.140 kg
------------------	----------

### Order example

Piece	Part no.	Finish no.
... Piece	4059	.31

**Standard design**

<b>aluminium machined according to E 5</b>	
KWS 1 silver anodised	<b>.31</b>
KWS 2 nickel silver anodised	<b>.32</b>
<b>aluminium</b>	
coloured plastic-coated	<b>.70</b>
unit	2 pieces
<b>Piece weight</b>	
aluminium <b>4068..</b>	0.150 kg

**4067..**

for 16 mm wall, 100 mm high

**4167..**

for 16 mm wall, 120 mm high

**4267..**

for 16 mm wall, 150 mm high

**4068..**

for 19 mm wall, 100 mm high

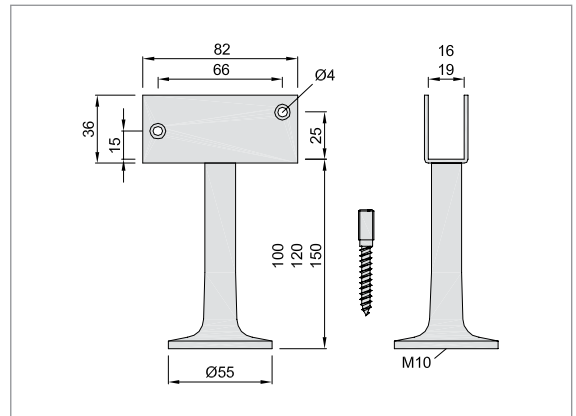
**4168..**

for 19 mm wall, 120 mm high

**4268..**

for 19 mm wall, 150 mm high

with U-shaped saddle and stair bolt M10x80 for plugging



**Order example**

Piece	Part no.	Finish no.
... Piece	<b>4067</b>	<b>.31</b>



**4063..**

18 mm saddle, 100 mm high

**4163..**

18 mm saddle, 120 mm high

**4263..**

18 mm saddle, 150 mm high

**4064..**

30 mm saddle, 100 mm high

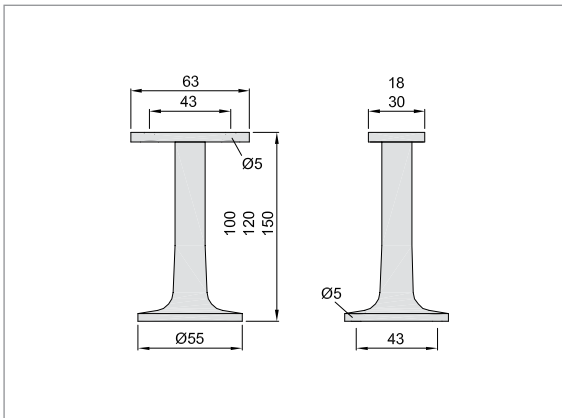
**4164..**

30 mm saddle, 120 mm high

**4264..**

30 mm saddle, 150 mm high

with flat saddle and two countersunk screw holes, for screwing on



**4065..**

100 mm high

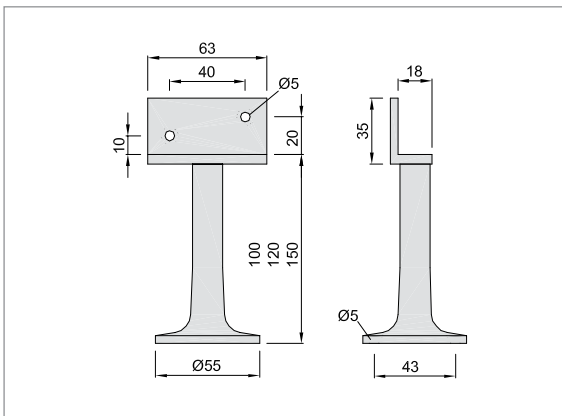
**4165..**

120 mm high

**4265..**

150 mm high

with L-shaped saddle and two countersunk screw holes, for screwing on



**Standard design**

**aluminium machined according to E 5**

KWS 1 silver anodised	<b>.31</b>
KWS 2 nickel silver anodised	<b>.32</b>

**aluminium**

coloured plastic-coated	<b>.70</b>
-------------------------	------------

unit	2 pieces
------	----------

**Piece weight**

aluminium <b>4063..</b>	0.090 kg
-------------------------	----------

**Standard design**

**aluminium machined according to E 5**

KWS 1 silver anodised	<b>.31</b>
KWS 2 nickel silver anodised	<b>.32</b>

**aluminium**

coloured plastic-coated	<b>.70</b>
-------------------------	------------

unit	2 pieces
------	----------

**Piece weight**

aluminium <b>4065..</b>	0.110 kg
-------------------------	----------

**Order example**

Piece	Part no.	Finish no.
... Piece	<b>4063</b>	<b>.31</b>

**Standard design**

<b>aluminium machined according to E 5</b>	
KWS 1 silver anodised	<b>.31</b>
KWS 2 nickel silver anodised	<b>.32</b>
<b>aluminium</b>	
coloured plastic-coated	<b>.70</b>
unit	2 pieces
<b>Piece weight</b>	
aluminium <b>4069..</b>	0.110 kg

**4069..**

for 16 mm wall, 100 mm high

**4169..**

for 16 mm wall, 120 mm high

**4269..**

for 16 mm wall, 150 mm high

**4070..**

for 19 mm wall, 100 mm high

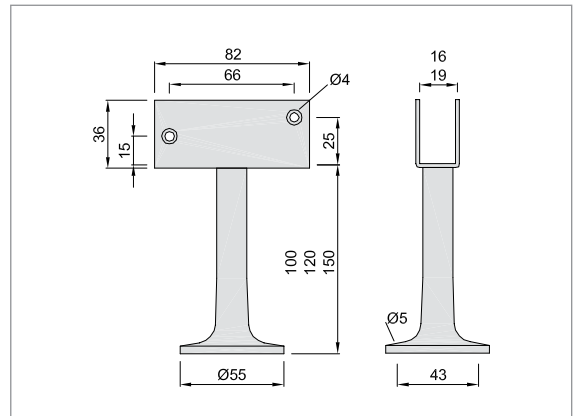
**4170..**

for 19 mm wall, 120 mm high

**4270..**

for 19 mm wall, 150 mm high

with U-shaped saddle and two countersunk screw holes, for screwing on



**Order example**

Piece	Part no.	Finish no.
... Piece	<b>4069</b>	<b>.31</b>



## 4101..

100 - 125 mm high

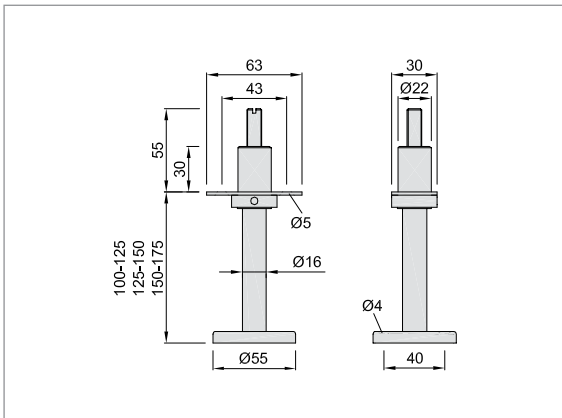
## 4102..

125 - 150 mm high

## 4103..

150 - 175 mm high

height adjustable  
for screwing on



### Standard design

#### aluminium machined according to E 5

KWS 1 silver anodised	.31
KWS 2 nickel silver anodised	.32

#### aluminium

coloured plastic-coated	.70
-------------------------	-----

#### stainless steel

brushed	.82
polished	.83

unit	2 pieces
------	----------

#### Piece weight

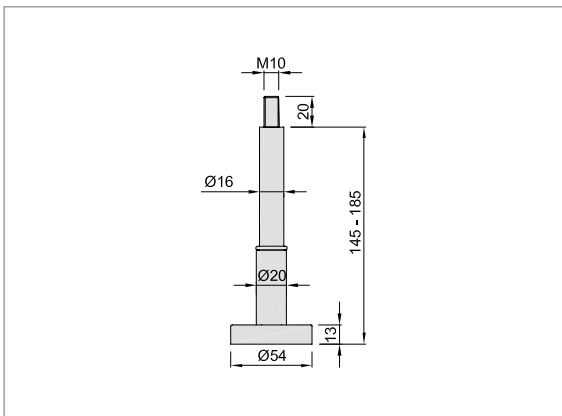
aluminium	4101..	0.190 kg
stainless steel	4101..	0.330 kg



## 4290..

145 - 185 mm high

concealed fixing,  
with threaded end M10



### Standard design

#### aluminium

KWS 1 silver anodised	.41
coloured plastic-coated	.70

#### stainless steel

brushed	.82
polished	.83

unit	2 pieces
------	----------

#### Piece weight

aluminium	0.200 kg
stainless steel	0.310 kg

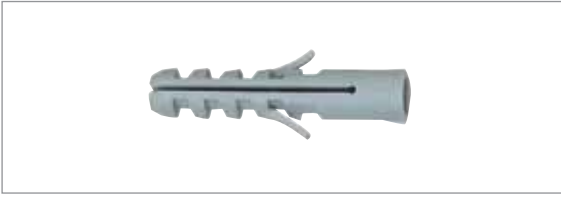
### Order example

Piece	Part no.	Finish no.
... Piece	4101	.31



|





**9102..**

plug M8 - S

**9107..**

plug S8

**9108..**

plug S12

**Standard design**

plastic	.95
---------	-----



**9103..**

anchor bolt M10x80

**9123..**

anchor bolt M8x80

**Standard design**

steel	.06
-------	-----

stainless steel	.80
-----------------	-----



**9104..**

stair bolt M10x80 mm

**9109..**

stair bolt M8x70 mm

**9111..**

stair bolt M6x50 mm

**Standard design**

steel	.06
-------	-----

stainless steel	.80
-----------------	-----





## Appendix Numbers Chart

Artikel	Seite	Artikel	Seite	Artikel	Seite	Artikel	Seite	Artikel	Seite
4001..	64	4231..	62	4543..	27	4679..	20	7303..	37
4002..	64	4232..	62	4544..	27	4680..	21	7304..	37
4003..	64	4233..	62	4545..	19	4681..	21	7459..	49
4004..	64	4241..	63	4546..	19	4701..	25	7459..	49
4005..	64	4242..	63	4547..	19	4702..	25	7501..	55
4006..	64	4243..	63	4548..	19			7502..	55
4009..	65	4251..	63	4550..	26	7011..	38	7505..	52
4010..	65	4252..	63	4551..	26	7020..	38	7506..	52
4011..	65	4253..	63	4555..	28	7021..	38	7507..	32, 46, 52
4012..	65	4259..	68	4556..	28	7022..	38	7508..	32, 46
4013..	65	4260..	68	4560..	26	7030..	39	7509..	32
4014..	65	4261..	68	4561..	26	7031..	39	7522..	48
4017..	67	4263..	70	4570..	16	7032..	40	7523..	48
4018..	67	4264..	70	4571..	16	7033..	40	7527..	47
4019..	67	4265..	70	4574..	15	7034..	40	7528..	47
4020..	67	4267..	69	4575..	15	7036..	39	7531..	53
4021..	67	4268..	69	4578..	20	7037..	39	7532..	53
4022..	67	4269..	71	4579..	20	7040..	39	7536..	54
4025..	67	4270..	71	4580..	30	7050..	41	7537..	54
4026..	67	4290..	72	4581..	30	7051..	41	7551..	53
4027..	67	4501..	24	4582..	30	7052..	41	7552..	53
4028..	67	4502..	24	4583..	30	7063..	41	7553..	53
4029..	67	4503..	27	4584..	30	7064..	42	7572..	32, 48
4030..	67	4504..	27	4585..	30	7065..	42	7573..	32, 48
4057..	66	4505..	27	4586..	30	7066..	43	7574..	32
4058..	66	4506..	27	4587..	30	7067..	43	7H07..	32
4059..	68	4507..	27	4588..	30	7201..	33	7H08..	32
4060..	68	4508..	27	4589..	30	7202..	33	7H10..	32
4061..	68	4509..	28	4590..	31	7203..	33	7H73..	32
4063..	70	4510..	28	4591..	31	7204..	33	7H74..	32
4064..	70	4511..	12	4592..	31	7211..	34	7H75..	32
4065..	70	4512..	12	4593..	31	7212..	34	7K73..	32
4067..	69	4513..	12	4594..	31	7213..	34	7K74..	32
4068..	69	4514..	12	4595..	31	7214..	34		
4069..	71	4515..	13	4596..	31	7221..	34	81G2..	54
4070..	71	4516..	13	4597..	31	7222..	34	81G3..	54
4101..	72	4517..	13	4598..	31	7223..	34	82G2..	54
4102..	72	4518..	13	4599..	31	7224..	34	82G3..	54
4103..	72	4522..	17	4600..	18, 29, 49	7231..	35, 47	82G4..	54
4159..	68	4523..	17	4601..	18	7232..	35, 47	83G3..	54
4160..	68	4524..	15	4602..	18	7233..	35, 47	83G4..	54
4161..	68	4525..	15	4603..	18	7234..	35, 47	8308..	11, 46
4163..	70	4526..	17	4607..	29	7241..	35	8329..	11
4164..	70	4527..	17	4608..	29	7242..	35	8330..	11
4165..	70	4528..	16	4609..	29	7243..	35	8399..	11, 46, 52
4167..	69	4529..	16	4611..	18	7244..	35	84G4..	54
4168..	69	4530..	14	4612..	18	7251..	36	8520..	11
4169..	71	4531..	14	4613..	18	7252..	36	8806..	52
4170..	71	4532..	14	4617..	29	7261..	36	8808..	11, 52
4201..	60	4533..	14	4618..	29	7262..	36		
4202..	60	4534..	14	4619..	29	7263..	36	9102..	76
4203..	60	4535..	14	4620..	22	7264..	36	9103..	76
4211..	61	4536..	14	4621..	22	7271..	37	9104..	76
4212..	61	4537..	14	4622..	22	7272..	37	9107..	76
4213..	61	4538..	14	4624..	23	7273..	37	9108..	76
4221..	61	4539..	14	4625..	23	7274..	37	9109..	76
4222..	61	4540..	14	4626..	23	7301..	37	9111..	76
4223..	61	4541..	14	4678..	20	7302..	37	9123..	76

**Short symbols for the finishes of aluminium**

material aluminium anodisable surface treatment subsequently anodised and compacted	Short symbol	1 Effect on surface damage (die marks - slight damage) 2 Structure and appearance
<b>ground - brush-finished</b>	<b>E 4</b>	1 up to completely removed 2 evenly dull-bright
<b>ground - polished</b>	<b>E 5</b>	1 to completely removed 2 smooth and highly brilliant to reflecting
<b>chemically pickled</b>	<b>E 6</b>	1 partly to mostly set off 2 variation option from dull to matt gleaming

**Finish codes**

raw steel, untreated surface	<b>.01</b>
silver stove enamelled	<b>.02</b>
black stove enamelled	<b>.03</b>
gold stove enamelled	<b>.04</b>
electro-galvanised	<b>.06</b>
hot galvanised	<b>.07</b>
dark brown stove enamelled	<b>.10</b>
special stove enamelled finish	<b>.19</b>

**Aluminium E 4**

natural finish, surface untreated	<b>.20</b>
ground and brushed	<b>.21</b>
KWS 1 silver anodised	<b>.22</b>
KWS 2 nickel silver anodised	<b>.23</b>
KWS 3 gold anodised	<b>.24</b>
special anodised colour	<b>.26</b>
KWS 4 light bronze anodised	<b>.27</b>
KWS 5 dark bronze anodised	<b>.28</b>
KWS 6 black anodised	<b>.29</b>

**Aluminium E 5**

natural finish, ground and polished	<b>.30</b>
KWS 1 silver anodised	<b>.31</b>
KWS 2 nickel silver anodised	<b>.32</b>
KWS 3 gold anodised	<b>.33</b>
brushed stainless steel effect anodised	<b>.35</b>
KWS 4 light bronze anodised	<b>.36</b>
KWS 5 dark bronze anodised	<b>.37</b>
KWS 6 black anodised	<b>.38</b>
special anodised colour	<b>.39</b>

**Aluminium E 6**

natural finish, chemical dipped	<b>.40</b>
KWS 1 silver anodised	<b>.41</b>
KWS 2 nickel silver anodised	<b>.42</b>
KWS 3 gold anodised	<b>.43</b>
KWS 4 light bronze anodised	<b>.46</b>
KWS 5 dark bronze anodised	<b>.47</b>
KWS 6 black anodised	<b>.48</b>
special anodised colour	<b>.49</b>

**Brass**

natural finish	<b>.60</b>
brushed and waxed	<b>.61</b>
brushed and lacquered	<b>.62</b>
nickel plated	<b>.63</b>
polished and waxed	<b>.65</b>
polished and lacquered	<b>.66</b>

**Plastic coated colours**

	<b>.70</b>
golden yellow	RAL 1004
flame red	RAL 3000
ruby red (.76)	RAL 3003
wine red	RAL 3005
sapphire blue (.75)	RAL 5003
brilliant blue	RAL 5007
azure blue	RAL 5009
leaf green	RAL 6002
moss green	RAL 6005
olive drab	RAL 6022
stone grey	RAL 7030
sepia brown	RAL 8014
mahogany brown	RAL 8016
dark brown (.74)	RAL 8077
grey white	RAL 9002
pure white (.71)	RAL 9010
graphite black (.73)	RAL 9011
traffic white (.72)	RAL 9016
other RAL colours on request	

**Stainless steel**

natural finish	<b>.80</b>
brushed	<b>.82</b>
polished	<b>.83</b>

**Plastic / rubber / wood**

PVC	<b>.95</b>
rubber	<b>.96</b>
beech wood	<b>.98</b>

## HELM Range

TEH_01	Hardware for Sliding Wardrobe Doors
TEH_02H	Hardware for Sliding Doors (Wood)
TEH_02G	Hardware for Sliding Doors (Glass)
TEH_02D	Design Hardware for Sliding Doors (Wood and Glass)
TEH_06	Hardware for Sliding Gates
TEH_09	Hardware for Gateway Gates
TEH_11	Hardware for Curtains and Tarpaulins
TEH_12	Safety Equipment against Falls from a Height (PSE)
TEH_40	Hardware for Sliding Shutters



TEH\_01



TEH\_02H



TEH\_02G



TEH\_02D



TEH\_06



TEH\_09



TEH\_11



TEH\_12



TEH\_40

## KWS Range

TEK_0102	Door Holders and Door Stops
TEK_0308	Door Pulls, Door Handles and Accessories
TEK_0506	Flush Pulls and Locks
TEK_0407	Hardware for Handrails, Floor Rails, Coat Racks and Toilet Partition Walls



TEK\_0102



TEK\_0308



TEK\_0506



TEK\_0407

The technical specifications are up-to-date. We reserve the right to make modifications with regard to design and styling which serve the purpose of technical improvement. We appreciate your understanding that we assume no liability for any typing errors or any other errors. The reproduction of this document, in extracts or complete, is not permitted without our express written permission.

Part. no.: TEK\_0407/07.2013  
This catalogue supersedes all previous catalogues.

### Woelm GmbH

Hasselbecker Str. 2-4  
D - 42579 Heiligenhaus  
Phone: + 49 (0) 20 56 - 18 - 0  
Telefax: + 49 (0) 20 56 - 18 - 21  
www.helmkws.de  
contact@woelm.de

### Woelm Austria GmbH

Seewalchen 5a  
A - 5201 Seekirchen  
Phone: + 43 (0) 62 12 - 25 02  
Telefax: + 43 (0) 62 12 - 69 95  
www.helmkws.at  
contact@woelm.co.at