

## Flush Pulls and Locks



Catalogue: TEK\_0506

# KWS Flush Pulls and Locks

## Contents

### Information

Introduction	Page 3
Technical Specifications	Page 4

### KWS Flush Pulls

Product overview	Page 6
KWS flush ring pulls	Page 8
KWS flush pulls	Page 19
KWS pulls	Page 26

### KWS Locks and Special Hardware

Product overview	Page 29
KWS locks	Page 30
KWS latches and gearboxes	Page 34
KWS pivot hinges	Page 37
KWS door stops	Page 39

### KWS Accessories

Accessories	Page 40
-------------	---------

### Appendix

Numbers chart	Page 42
Finishes chart	Page 43





### **KWS Flush Pulls and Locks**

When nothing may protrude from the face of the door you should resort to flush pulls by KWS, such as for gyms, lifts or folding doors. You use KWS flush pulls as a simple, inside handle or with ring, folding handle or knob like a door handle.

KWS flush pulls are available in zinc-plated steel, stainless steel, aluminium or polished brass. You will find further information as well as technical specifications on the following pages.

Furthermore, you will find in this catalogue lever locks and special hardware for many varied applications (from p. 28).

### Technical notes

Whether flush pull, flush ring pull or gym fitting, it is always about using a door without employing protruding hardware parts. The reason for this is basically a lack of space or the avoidance of injury risks, e. g. in case of sliding doors, lift doors, garage doors or also gym doors. Flush pulls can basically be categorised as follows:

- 1. Flush pull as a pure handle**
- 2. Flush pull with folding ring or folding handle for lock operation**

You will find relevant product samples on the following pages.

When selecting the right flush pull the question whether a cylinder cut-out is to be made is also of importance. This is mainly the case when using flush ring pulls and gym fittings.

Available cut-outs are: profile cylinder, single tumbler and Kaba.

### Things to be taken into account when mounting flush pulls:

Please make sure that there is sufficient depth for flush mounting and that the hole sizes correspond to the catalogue drawings. We refer again to the product-related recommendations for mounting.

**Flush pulls ..**

as a pure handle



**Flush pulls ..**

by means of folding ring or handle





Page 8



Page 9



Page 10



Page 10



Page 11



Page 12



Page 13



Page 14



Page 15



Page 16



Page 17



Page 17



Page 18



Page 19



Page 20



Page 21



Page 21



Page 22



Page 22



Page 23



Page 23



Page 24



Page 24



Page 25



Page 26



Page 26



Page 27



Page 27



**5001..**

70 x 200 with 8 mm female part

**5002..**

70 x 200 with 8 mm spindle part

**5101..**

70 x 200 with 7 mm female part

**5102..**

70 x 200 with 7 mm spindle part

Ring handle fixed pivoting,  
spindle of spindle part  
permanently riveted

Cut-out:  
without cut-out or with cut-out,  
e. g. profile cylinder, single  
tumbler, KABA, smallest distance  
for profile cylinder cut-out =  
55 mm  
biggest distance for profile  
cylinder cut-out = 92 mm

**Note**

**You need sufficient depth for flush mounting.**

The rotary handle **5047..** can also  
be used instead of the flush ring  
pull or **5048..** can be used.

**Standard design**

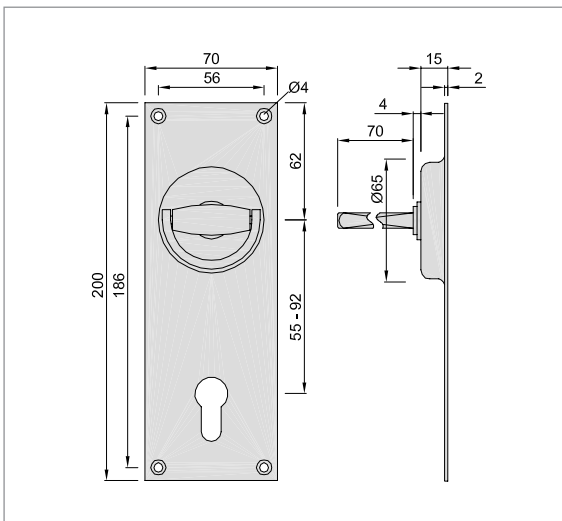
<b>steel/aluminium</b>	
<b>Recessed grip of steel with ring</b>	
<b>of aluminium</b>	
silver stove enamelled	<b>.02</b>
black stove enamelled	<b>.03</b>
dark brown stove enamelled	<b>.10</b>
coloured plastic-coated	<b>.70</b>

<b>aluminium machined according to E 5</b>	
<b>Recessed grip of aluminium with ring</b>	
<b>of aluminium</b>	
KWS 1 silver anodised	<b>.31</b>
KWS 2 nickel silver anodised	<b>.32</b>
KWS 3 gold anodised	<b>.33</b>
brushed stainless steel effect anodised	<b>.35</b>
KWS 5 dark bronze anodised	<b>.37</b>

<b>brass</b>	
<b>Recessed grip of brass with ring</b>	
<b>of brass</b>	
brushed and lacquered	<b>.62</b>
polished and lacquered	<b>.66</b>

packaging unit female part	5 pieces
spindle part	2 pieces

<b>Piece weight</b>	
steel/aluminium	0.110 kg
aluminium	0.300 kg
brass	0.250 kg



**Order example**

Piece	Part no.	Finish no.	Cut-out	Distance
... Piece	<b>5001</b>	<b>.02</b>	profile cylinder	72 mm

**Standard design**

**steel/aluminium**

**Recessed grip of steel with ring**

**of aluminium**

silver stove enamelled	.02
black stove enamelled	.03
dark brown stove enamelled	.10
coloured plastic-coated	.70

**aluminium machined according to E 5**

**Recessed grip of aluminium with ring**

**of aluminium**

KWS 1 silver anodised	.31
KWS 2 nickel silver anodised	.32
KWS 3 gold anodised	.33
brushed stainless steel effect anodised	.35
KWS 5 dark bronze anodised	.37

**brass**

**Recessed grip of brass with ring**

**of brass**

brushed and lacquered	.62
polished and lacquered	.66

**stainless steel**

**Recessed grip of stainless steel with ring**

**of stainless steel**

**not for 5010.. and 5011..**

brushed	.82
polished	.83

packaging unit female part	5 pieces
spindle part	2 pieces

**Piece weight**

steel/aluminium	0.380 kg
aluminium	0.150 kg
brass	0.480 kg
stainless steel	0.430 kg



**5004..**

100 x 200 with 8 mm female part

**5005..**

100 x 200 with 8 mm spindle part

**5007..**

100 x 200 with 9 mm female part

**5008..**

100 x 200 with 9 mm spindle part

**5010..**

100 x 200 with 10 mm female part

**5011..**

100 x 200 with 10 mm spindle part

**5104..**

100 x 200 with 7 mm female part

**5105..**

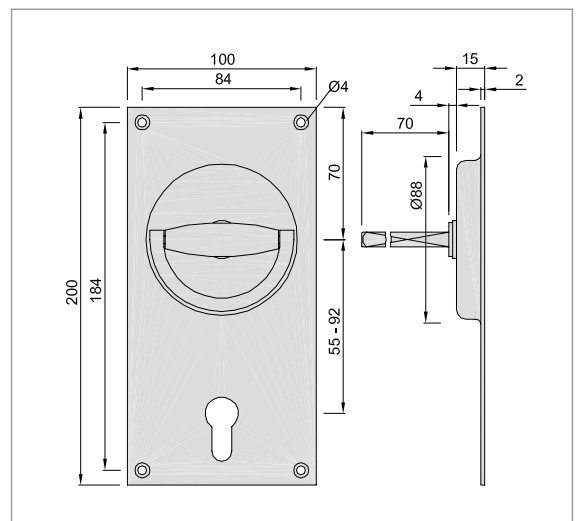
100 x 200 with 7 mm spindle part

Ring handle fixed pivoting, spindle of spindle part permanently riveted

Cut-out:  
without cut-out or with cut-out, e. g. profile cylinder, single tumbler, KABA, smallest distance for profile cylinder cut-out = 55 mm  
biggest distance for profile cylinder cut-out = 92 mm

**Note**  
**You need sufficient depth for flush mounting.**

The flush ring pulls **5007..** and **5008..** are available under **5907..** or **5908..** completely of steel or with the finish **.06** (zinc-electroplated).



**Order example**

Piece	Part no.	Finish no.	Cut-out	Distance
... Piece	<b>5004</b>	<b>.02</b>	profile cylinder	92 mm



**5013..**

70 x 70 with 8 mm female part

**5014..**

70 x 70 with 8 mm spindle part

**5113..**

70 x 70 with 7 mm female part

**5114..**

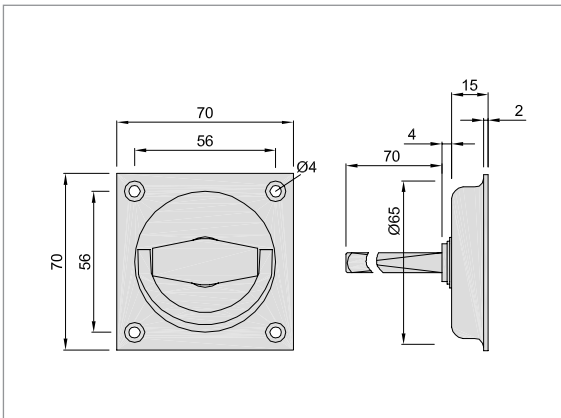
70 x 70 with 7 mm spindle part

Ring handle fixed pivoting, spindle of spindle part permanently riveted

**Note**

*You need sufficient depth for flush mounting.*

with rubber tongue see 5054.. Instead of the ring handle also the rotary handle can be employed 5047.. or 5048.. can be used.



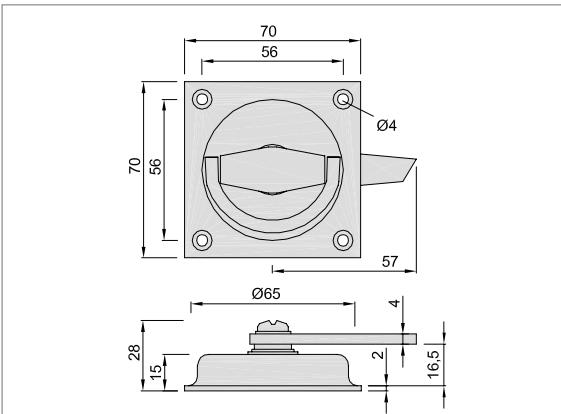
**5054..**

70 x 70 with 8 mm with throw over latch

ring pull fixed pivoting 90 x 90 mm see 5051..

**Note**

*You need sufficient depth for flush mounting.*



**Standard design**

<b>steel/aluminium</b>	
<b>Recessed grip of steel with ring of aluminium</b>	
silver stove enamelled	.02
black stove enamelled	.03
dark brown stove enamelled	.10
coloured plastic-coated	.70

**aluminium machined according to E 5**  
**Recessed grip of aluminium with ring of aluminium**

KWS 1 silver anodised	.31
KWS 2 nickel silver anodised	.32
KWS 3 gold anodised	.33
brushed stainless steel effect anodised	.35
KWS 5 dark bronze anodised	.37

**brass**

<b>Recessed grip of brass with ring of brass</b>	
brushed and lacquered	.62
polished and lacquered	.66

packaging unit female part	10 pieces
spindle part	5 pieces

**Piece weight**

steel/aluminium	0.120 kg
aluminium	0.060 kg
brass	0.170 kg

**Standard design**

<b>steel/aluminium</b>	
<b>Recessed grip of steel with ring of aluminium</b>	
silver stove enamelled	.02
black stove enamelled	.03
dark brown stove enamelled	.10
coloured plastic-coated	.70

**aluminium machined according to E 5**  
**Recessed grip of aluminium with ring of aluminium**

KWS 1 silver anodised	.31
KWS 2 nickel silver anodised	.32
KWS 3 gold anodised	.33
brushed stainless steel effect anodised	.35
KWS 5 dark bronze anodised	.37

**brass**

<b>Recessed grip of brass with ring of brass</b>	
brushed and lacquered	.62
polished and lacquered	.66

unit	10 pieces
------	-----------

**Piece weight**

steel/aluminium	0.120 kg
aluminium	0.060 kg
brass	0.170 kg

**Standard design**

**steel/aluminium**

**Recessed grip of steel with ring of aluminium**

silver stove enamelled	.02
black stove enamelled	.03
dark brown stove enamelled	.10
coloured plastic-coated	.70

**aluminium machined according to E 5**

**Recessed grip of aluminium with ring of aluminium**

KWS 1 silver anodised	.31
KWS 2 nickel silver anodised	.32
KWS 3 gold anodised	.33
brushed stainless steel effect anodised	.35
KWS 5 dark bronze anodised	.37

**brass**

**Recessed grip of brass with ring of brass**

brushed and lacquered	.62
polished and lacquered	.66

**stainless steel**

**Recessed grip of stainless steel with ring of stainless steel**

not for 5022.. and 5023..

brushed	.82
polished	.83

packaging unit female part	8 pieces
spindle part	5 pieces

**Piece weight**

steel/aluminium	0.200 kg
aluminium	0.090 kg
brass	0.280 kg
stainless steel	0.250 kg



Ring handle fixed pivoting, spindle of spindle part permanently riveted

with throw over latch see 5051.. The flush ring pulls 5019.. and 5020.. are available under 5919.. or 5920.. made completely of steel or with the finish .06 (zinc-electroplated).

**Note**

You need sufficient depth for flush mounting.

**Order example**

Piece	Part no.	Finish no.
... Piece	5016	.31



**5016..**

90 x 90 with 8 mm female part

**5017..**

90 x 90 with 8 mm spindle part

**5019..**

90 x 90 with 9 mm female part

**5020..**

90 x 90 with 9 mm spindle part

**5022..**

90 x 90 with 10 mm female part

**5023..**

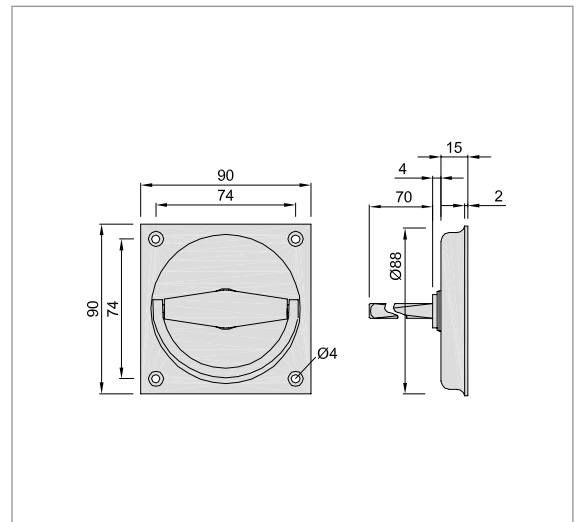
90 x 90 with 10 mm spindle part

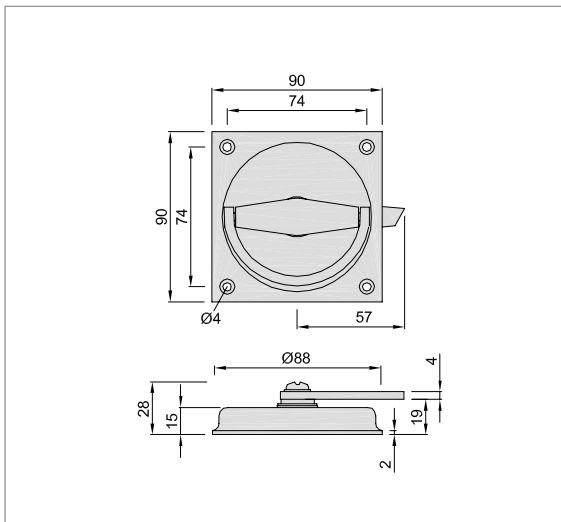
**5116..**

90 x 90 with 7 mm female part

**5117..**

90 x 90 with 7 mm spindle part





**5051..**

90 x 90 with throw over latch

ring pull fixed pivoting  
70 x 70 mm see **5054..**

**Note**  
*You need sufficient depth for flush mounting.*

**Standard design**

<b>steel/aluminium</b>	
<b>Recessed grip of steel with ring</b>	
<b>of aluminium</b>	
silver stove enamelled	<b>.02</b>
black stove enamelled	<b>.03</b>
dark brown stove enamelled	<b>.10</b>
coloured plastic-coated	<b>.70</b>

**aluminium machined according to E 5**

<b>Recessed grip of aluminium with ring</b>	
<b>of aluminium</b>	
KWS 1 silver anodised	<b>.31</b>
KWS 2 nickel silver anodised	<b>.32</b>
KWS 3 gold anodised	<b>.33</b>
brushed stainless steel effect anodised	<b>.35</b>
KWS 5 dark bronze anodised	<b>.37</b>

**brass**

<b>Recessed grip of brass with ring</b>	
<b>of brass</b>	
brushed and lacquered	<b>.62</b>
polished and lacquered	<b>.66</b>

**stainless steel**

<b>Recessed grip of stainless steel with ring</b>	
<b>of stainless steel</b>	
brushed	<b>.82</b>
polished	<b>.83</b>

unit	5 pieces
------	----------

**Piece weight**

steel/aluminium	0.230 kg
aluminium	0.120 kg
brass	0.310 kg
stainless steel	0.280 kg



**Order example**

Piece	Part no.	Finish no.
... Piece	<b>5051</b>	<b>.02</b>

**Standard design**

**steel/aluminium**

**Recessed grip of steel with ring**

**of aluminium**

silver stove enamelled	<b>.02</b>
black stove enamelled	<b>.03</b>
dark brown stove enamelled	<b>.10</b>
coloured plastic-coated	<b>.70</b>

**aluminium machined according to E 5**

**Recessed grip of aluminium with ring**

**of aluminium**

KWS 1 silver anodised	<b>.31</b>
KWS 2 nickel silver anodised	<b>.32</b>
KWS 3 gold anodised	<b>.33</b>
brushed stainless steel effect anodised	<b>.35</b>
KWS 5 dark bronze anodised	<b>.37</b>

**brass**

**Recessed grip of brass with ring**

**of brass**

brushed and lacquered	<b>.62</b>
polished and lacquered	<b>.66</b>

**stainless steel**

**Recessed grip of stainless steel with ring**

**of stainless steel**

**not for 5031.. and 5032..**

brushed	<b>.82</b>
polished	<b>.83</b>

packaging unit female part	7 pieces
spindle part	4 pieces

**Piece weight**

steel/aluminium	0.230 kg
aluminium	0.100 kg
brass	0.310 kg
stainless steel	0.280 kg



Ring handle fixed pivoting, spindle of spindle part permanently riveted

The flush ring pulls **5028..** and **5029..** are available under **5928..** or **5929..** completely of steel or with the finish **.06** (zinc-electroplated).

**Note**

**You need sufficient depth for flush mounting.**



**5025..**

100 x 100 with 8 mm female part

**5026..**

100 x 100 with 8 mm spindle part

**5028..**

100 x 100 with 9 mm female part

**5029..**

100 x 100 with 9 mm spindle part

**5031..**

100 x 100 with 10 mm female part

**5032..**

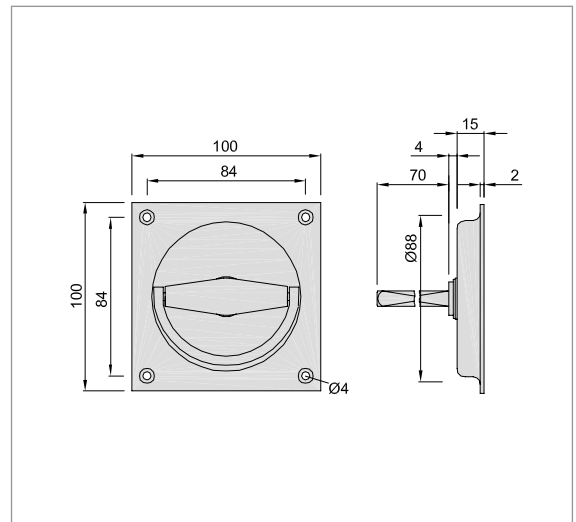
100 x 100 with 10 mm spindle part

**5125..**

100 x 100 with 7 mm female part

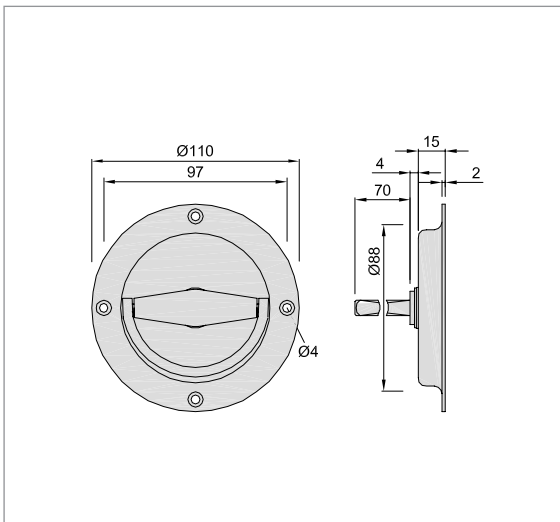
**5126..**

100 x 100 with 7 mm spindle part



**Order example**

Piece	Part no.	Finish no.
... Piece	<b>5025</b>	<b>.03</b>



**5034..**

Ø110 with 8 mm female part

**5035..**

Ø110 with 8 mm spindle part

**5037..**

Ø110 with 9 mm female part

**5038..**

Ø110 with 9 mm spindle part

**5040**

Ø110 with 10 mm female part

**5041..**

Ø110 with 10 mm spindle part

**5134..**

Ø110 with 7 mm female part

**5135..**

Ø110 with 7 mm spindle part

**Standard design**

**steel/aluminium**

**Recessed grip of steel with ring**

**of aluminium**

silver stove enamelled	.02
black stove enamelled	.03
dark brown stove enamelled	.10
coloured plastic-coated	.70

**aluminium machined according to E 5**

**Recessed grip of aluminium with ring**

**of aluminium**

KWS 1 silver anodised	.31
KWS 2 nickel silver anodised	.32
KWS 3 gold anodised	.33
brushed stainless steel effect anodised	.35
KWS 5 dark bronze anodised	.37

**brass**

**Recessed grip of brass with ring**

**of brass**

brushed and lacquered	.62
polished and lacquered	.66

**stainless steel**

**Recessed grip of stainless steel with ring**

**of stainless steel**

**not for 5040.. and 5041..**

brushed	.82
polished	.83

packaging unit female part	5 pieces
spindle part	4 pieces

**Piece weight**

steel/aluminium	0.210 kg
aluminium	0.100 kg
brass	0.290 kg
stainless steel	0.260 kg



Ring handle fixed pivoting, spindle of spindle part permanently riveted

The flush ring pulls **5037..** and **5038..** are available under **5937..** or **5938..** completely of steel or with the finish **.06** (zinc-electroplated).

**Note**

**You need sufficient depth for flush mounting.**

**Order example**

Piece	Part no.	Finish no.
... Piece	<b>5034</b>	<b>.02</b>



**Standard design**

steel/aluminium

Recessed grip of steel with ring

of aluminium

silver stove enamelled	.02
black stove enamelled	.03
dark brown stove enamelled	.10
coloured plastic-coated	.70

aluminium machined according to E 5

Recessed grip of aluminium with ring

of aluminium

KWS 1 silver anodised	.31
KWS 2 nickel silver anodised	.32
KWS 3 gold anodised	.33
brushed stainless steel effect anodised	.35
KWS 5 dark bronze anodised	.37

packaging unit female part	10 pieces
spindle part	5 pieces

**Piece weight**

steel/aluminium	0.120 kg
aluminium	0.060 kg

**Order example**

Piece	Part no.	Finish no.
... Piece	5047	.02

**5047..**

70 x 70 with 8 mm female part

**5048..**

70 x 70 with 8 mm spindle part

**5147..**

70 x 70 with 7 mm female part

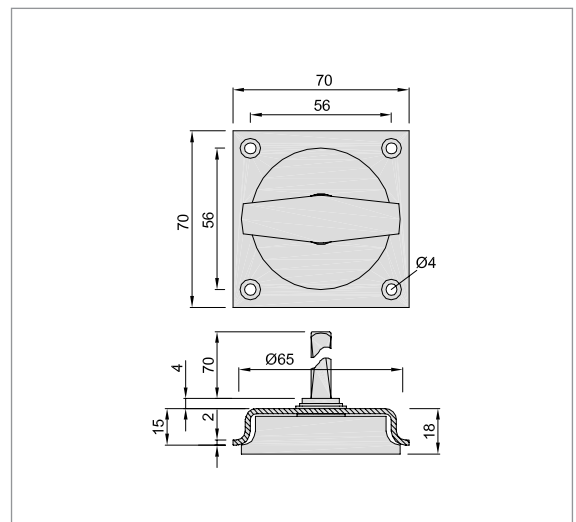
**5148..**

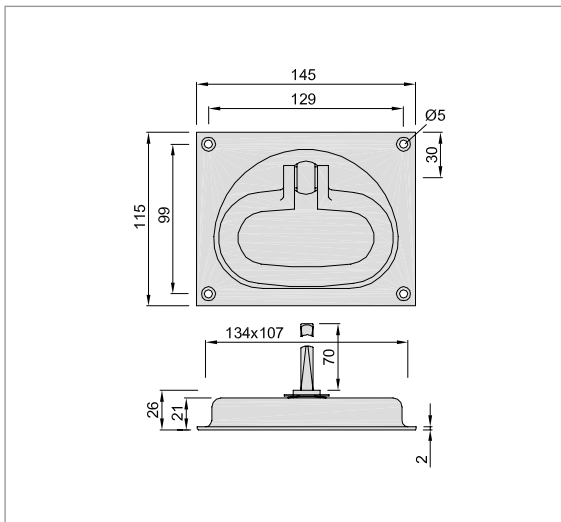
70 x 70 with 7 mm spindle part

Rotary handle fixed pivoting, spindle of spindle part permanently riveted

**Note**

**You need sufficient depth for flush mounting.**





**5043..**

145 x 115 with 8 mm female part

**5044..**

145 x 115 with 8 mm spindle part

**5045..**

145 x 115 with 9 mm female part

**5046..**

145 x 115 with 9 mm spindle part

Ring handle fixed pivoting, spindle of spindle part permanently riveted.

This flush ring pull cannot be used in pairs or in combination with a door handle or knob.

**Note**  
*You need sufficient depth for flush mounting.*

**Standard design**

steel/aluminium

**Recessed grip of steel with ring**

of aluminium

silver stove enamelled	.02
black stove enamelled	.03
dark brown stove enamelled	.10
coloured plastic-coated	.70

**aluminium machined according to E 5**

**Recessed grip of aluminium with ring**

of aluminium

KWS 1 silver anodised	.31
KWS 2 nickel silver anodised	.32
KWS 3 gold anodised	.33
brushed stainless steel effect anodised	.35
KWS 5 dark bronze anodised	.37

packaging unit female part	8 pieces
spindle part	4 pieces

**Piece weight**

steel/aluminium	0.440 kg
aluminium	0.230 kg

**Order example**

Piece	Part no.	Finish no.
... Piece	5043	.02



**Standard design**

steel/aluminium

Recessed grip of steel with ring

of aluminium

silver stove enamelled	.02
black stove enamelled	.03
dark brown stove enamelled	.10
coloured plastic-coated	.70

aluminium machined according to E 5

Recessed grip of aluminium with ring

of aluminium

KWS 1 silver anodised	.31
KWS 2 nickel silver anodised	.32
KWS 3 gold anodised	.33
brushed stainless steel effect anodised	.35
KWS 5 dark bronze anodised	.37

unit	2 pieces
------	----------

**Piece weight**

steel/aluminium	0.586 kg
aluminium	0.300 kg

Ring handle fixed pivoting, spindle of spindle part permanently riveted.

This flush ring pull cannot be used in pairs or in combination with a door handle or knob.

**Note**

**You need sufficient depth for flush mounting.**

**Order example**

Piece	Part no.	Finish no.	Cut-out	Distance
... Piece	5164	.02	profile cylinder	92

**5160..**

145 x 165 with 8 mm female part

**5161..**

145 x 165 with 8 mm spindle part

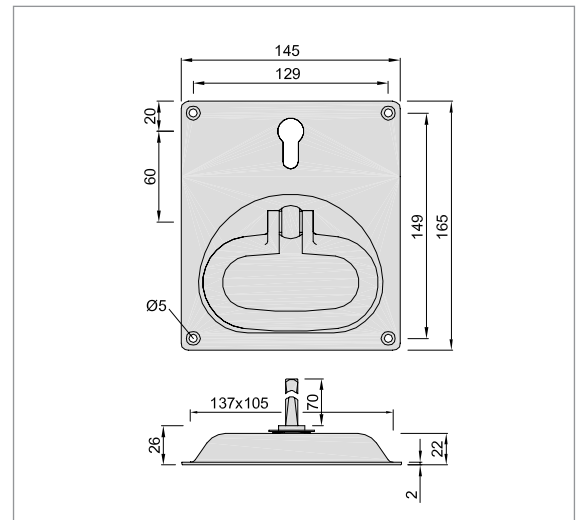
**5162..**

145 x 165 with 9 mm female part

**5163..**

145 x 165 with 9 mm spindle part

Cut-out without cut-out or 60 mm profile cylinder with cut-out



**5164..**

145 x 165 with 8 mm female part

**5165..**

145 x 165 with 8 mm spindle part

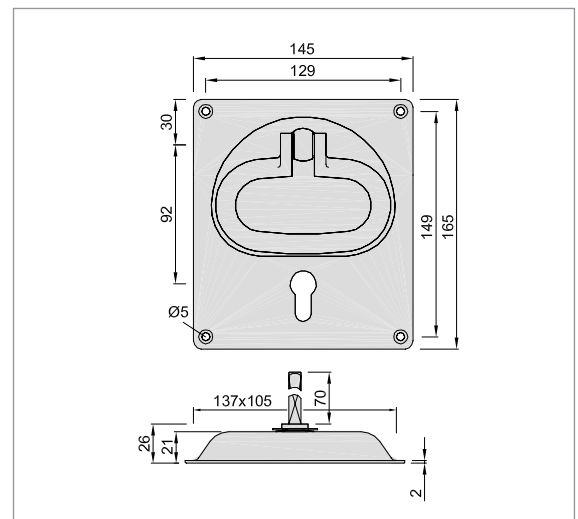
**5166..**

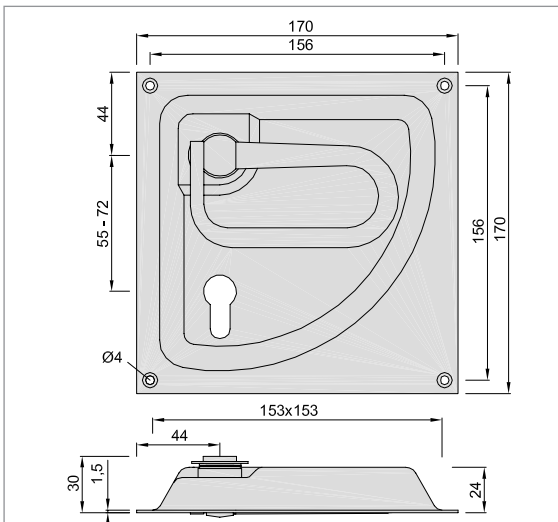
145 x 165 with 9 mm female part

**5167..**

145 x 165 with 9 mm spindle part

Cut-out without cut-out or 92 mm profile cylinder with cut-out





**5055..**

170 x 170 with 8 mm female part

**5056..**

170 x 170 with 8 mm spindle part

**5058..**

170 x 170 with 9 mm female part

**5059..**

170 x 170 with 9 mm spindle part

with flush-mounted, fixed pivoting ring handle, spindle of spindle part permanently riveted

Cut-out without cut-out or with cut-out, e. g. profile cylinder, single tumbler, KABA, smallest distance for profile cylinder cut-out = 55 mm biggest distance for profile cylinder cut-out = 72 mm

This door fitting is available in a similar design of stainless steel: see **5061.. 5062..** and **5064.. 5065..**

**Note**

**You need sufficient depth for flush mounting.**

Fig. depicts right door fitting.

**Standard design**

<b>steel/aluminium</b>	
<b>Recessed grip of steel with ring</b>	
<b>of aluminium</b>	
silver stove enamelled	<b>.02</b>
black stove enamelled	<b>.03</b>
dark brown stove enamelled	<b>.10</b>
coloured plastic-coated	<b>.70</b>

**aluminium machined according to E 5**

<b>Recessed grip of aluminium with ring</b>	
<b>of aluminium</b>	
KWS 1 silver anodised	<b>.31</b>
KWS 2 nickel silver anodised	<b>.32</b>
KWS 3 gold anodised	<b>.33</b>
brushed stainless steel effect anodised	<b>.35</b>
KWS 5 dark bronze anodised	<b>.37</b>

unit	2 pieces
------	----------

**Piece weight**

steel/aluminium	0.440 kg
aluminium	0.230 kg

**Order example**

Piece	Part no.	Finish no.	Cut-out	Distance	right/left
... Piece	<b>5055</b>	<b>.02</b>	profile cylinder	72	R



**Standard design**

**steel/aluminium**

**Recessed grip of steel with handle**

**of aluminium**

silver stove enamelled	.02
black stove enamelled	.03
dark brown stove enamelled	.10
coloured plastic-coated	.70

**aluminium machined according to E 5**

**Recessed grip of aluminium with handle**

**of aluminium**

KWS 1 silver anodised	.31
KWS 2 nickel silver anodised	.32
KWS 3 gold anodised	.33
brushed stainless steel effect anodised	.35
KWS 5 dark bronze anodised	.37

**stainless steel**

**Recessed grip of stainless steel with handle**

**of stainless steel (see drawing below)**

brushed	.82
polished	.83

unit	2 pieces
------	----------

**Piece weight**

steel/aluminium	0.480 kg
aluminium	0.220 kg
stainless steel	0.550 kg

**Order example**

Piece	Part no.	Finish no.	Cut-out	Distance	right/left
... Piece	5061	.82	profile cylinder	72	L

**5061..**

170 x 170 with 8 mm female part

**5062..**

170 x 170 with 8 mm spindle part

**5064..**

170 x 170 with 9 mm female part

**5065..**

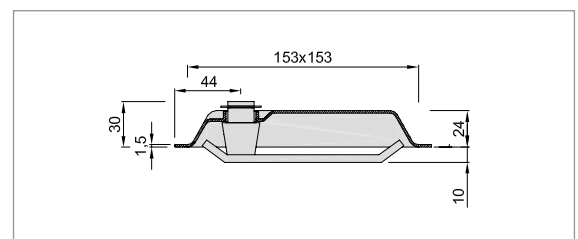
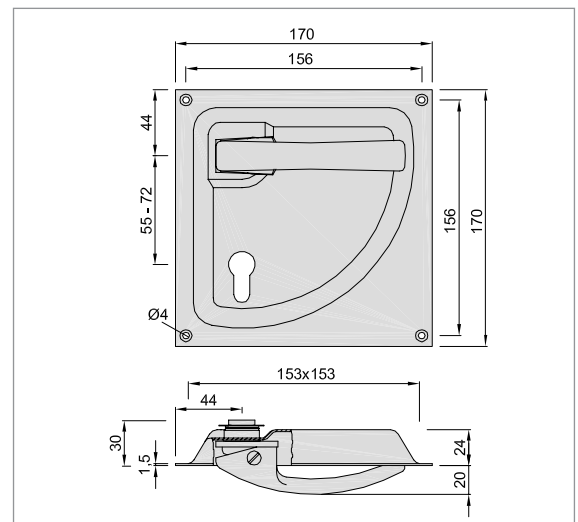
170 x 170 with 9 mm spindle part

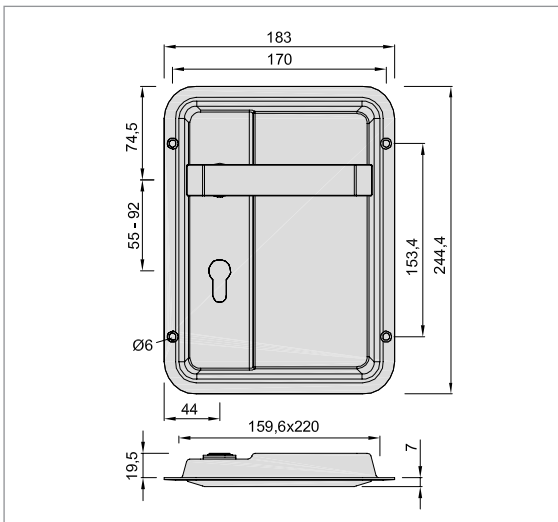
with flush-mounted, fixed pivoting handle, spindle of spindle part permanently riveted

Cut-out without cut-out or with cut-out, e. g. profile cylinder, single tumbler, KABA, smallest distance for profile cylinder cut-out = 55 mm biggest distance for profile cylinder cut-out = 72 mm

**Note**  
**You need sufficient depth for flush mounting.**

Fig. depicts right door fitting.





**5072..**

183 x 244 with 8 mm female part

**5073..**

183 x 244 with 8 mm spindle part

**5074..**

183 x 244 with 9 mm female part

**5075..**

183 x 244 with 9 mm spindle part

with flush-mounted, fixed pivoting handle, spindle of spindle part bolted

Cut-out without cut-out or with cut-out, e. g. profile cylinder, KABA smallest distance = 55 mm biggest distance = 92 mm

More variations as well as installation drawings on request.

**Note**  
*You need sufficient depth for flush mounting.*

Fig. depicts right door fitting.

**Standard design**

stainless steel

**Recessed grip of stainless steel with handle**

**of stainless steel**

brushed

**.82**

unit

2 pieces

**Piece weight**

stainless steel

0.550 kg



**Order example**

Piece	Part no.	Finish no.	Cut-out	Distance	right/left
... Piece	<b>5072</b>	<b>.82</b>	profile cylinder	72	R

**Standard design**

**steel/aluminium**

**back plate of steel**

silver stove enamelled	.02
black stove enamelled	.03
dark brown stove enamelled	.10
coloured plastic-coated	.70

**aluminium machined according to E 5**

**back plate of aluminium**

KWS 1 silver anodised	.31
KWS 2 nickel silver anodised	.32
KWS 3 gold anodised	.33
brushed stainless steel effect anodised	.35
KWS 5 dark bronze anodised	.37

unit	8 pieces
------	----------

**Piece weight**

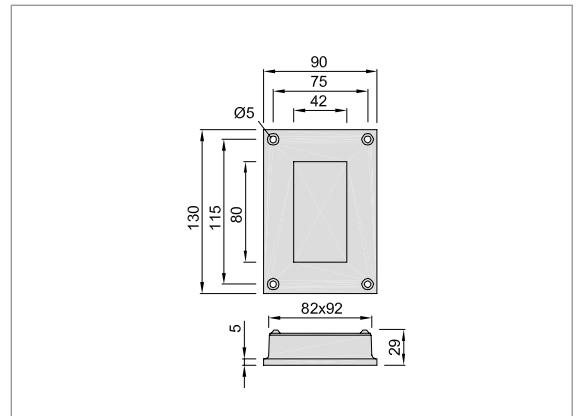
steel/aluminium	0.290 kg
-----------------	----------

**5201..**

90 x 130 mm

**Note**

*You need sufficient depth for flush mounting.*



**Standard design**

**steel/aluminium**

**back plate of steel**

silver stove enamelled	.02
black stove enamelled	.03
dark brown stove enamelled	.10
coloured plastic-coated	.70

**aluminium machined according to E 5**

**back plate of aluminium**

KWS 1 silver anodised	.31
KWS 2 nickel silver anodised	.32
KWS 3 gold anodised	.33
brushed stainless steel effect anodised	.35
KWS 5 dark bronze anodised	.37

Packaging unit 5202.. / 5203..	10 / 5 pieces
--------------------------------	---------------

**Piece weight**

steel/aluminium 5202..	0.180 kg
steel/aluminium 5203..	0.260 kg

**5202..**

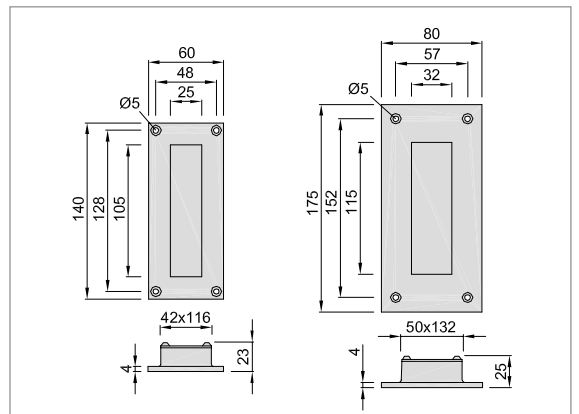
60 x 140 mm

**5203..**

80 x 175 mm

**Note**

*You need sufficient depth for flush mounting.*



**Order example**

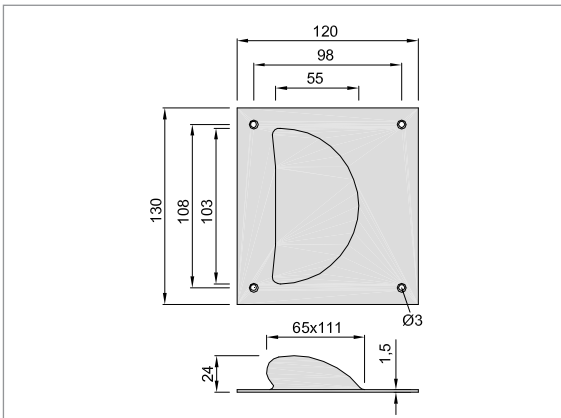
Piece	Part no.	Finish no.
... Piece	5201	.02



## 5205..

120 x 130 mm

**Note**  
You need sufficient depth for flush mounting.



### Standard design

steel	
silver stove enamelled	.02
black stove enamelled	.03
electro-galvanised	.06
dark brown stove enamelled	.10
coloured plastic-coated	.70

### aluminium machined according to E 5

KWS 1 silver anodised	.31
KWS 2 nickel silver anodised	.32
KWS 3 gold anodised	.33
brushed stainless steel effect anodised	.35
KWS 5 dark bronze anodised	.37

### stainless steel

brushed	.82
polished	.83

unit 10 pieces

### Piece weight

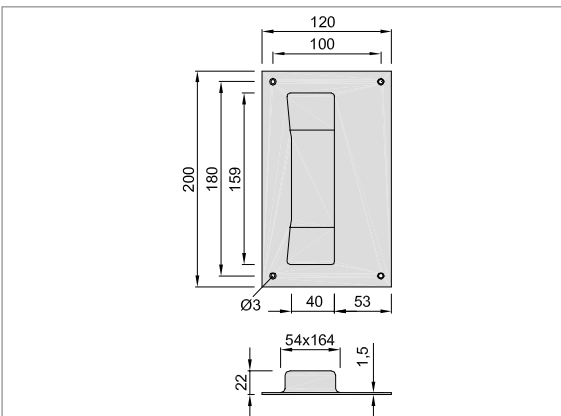
steel	0.210 kg
aluminium	0.070 kg
stainless steel	0.210 kg



## 5206..

120 x 200 mm

**Note**  
You need sufficient depth for flush mounting.



### Standard design

steel	
silver stove enamelled	.02
black stove enamelled	.03
electro-galvanised	.06
dark brown stove enamelled	.10
coloured plastic-coated	.70

### aluminium machined according to E 5

KWS 1 silver anodised	.31
KWS 2 nickel silver anodised	.32
KWS 3 gold anodised	.33
brushed stainless steel effect anodised	.35
KWS 5 dark bronze anodised	.37

### stainless steel

brushed	.82
polished	.83

unit 10 pieces

### Piece weight

steel	0.330 kg
aluminium	0.100 kg
stainless steel	0.330 kg

### Order example

Piece	Part no.	Finish no.
... Piece	5205	.02

**Standard design**

steel	
silver stove enamelled	.02
black stove enamelled	.03
electro-galvanised	.06
dark brown stove enamelled	.10
coloured plastic-coated	.70

**aluminium machined according to E 5**

KWS 1 silver anodised	.31
KWS 2 nickel silver anodised	.32
KWS 3 gold anodised	.33
brushed stainless steel effect anodised	.35
KWS 5 dark bronze anodised	.37

**stainless steel**

brushed	.82
polished	.83

unit	10 pieces
------	-----------

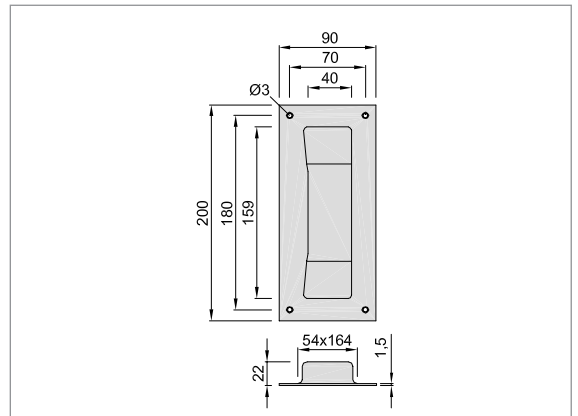
**Piece weight**

steel	0.260 kg
aluminium	0.080 kg
stainless steel	0.260 kg

**5207..**

90 x 200 mm

**Note**  
You need sufficient depth for flush mounting.



**Standard design**

steel	
silver stove enamelled	.02
black stove enamelled	.03
electro-galvanised	.06
dark brown stove enamelled	.10
coloured plastic-coated	.70

**aluminium machined according to E 5**

KWS 1 silver anodised	.31
KWS 2 nickel silver anodised	.32
KWS 3 gold anodised	.33
brushed stainless steel effect anodised	.35
KWS 5 dark bronze anodised	.37

**stainless steel**

brushed	.82
polished	.83

unit	10 pieces
------	-----------

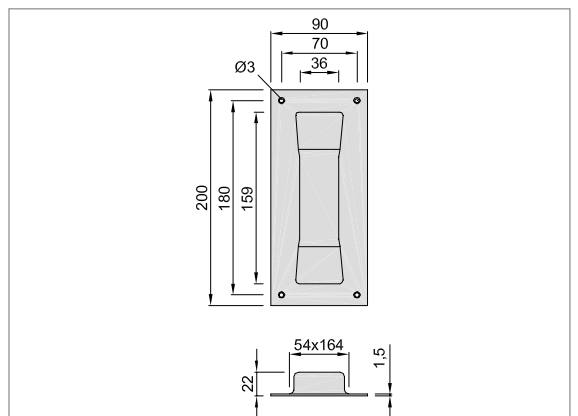
**Piece weight**

steel	0.260 kg
aluminium	0.080 kg
stainless steel	0.260 kg

**5208..**

90 x 200 mm

**Note**  
You need sufficient depth for flush mounting.



**Order example**

Piece	Part no.	Finish no.
... Piece	5207	.02



## 5250..

Ø 65 mm sliding door flush pull for glass doors 8 - 12 mm

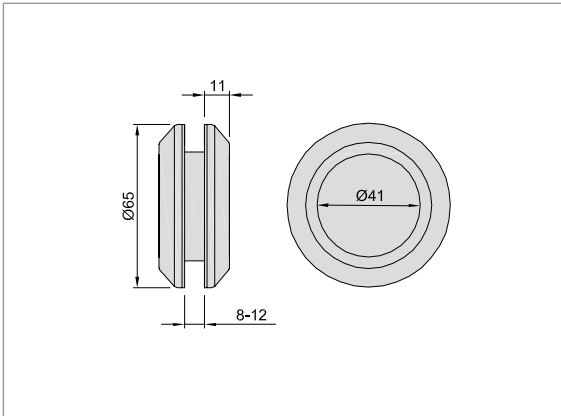
outer rings of aluminium, brass or stainless steel  
inner part of aluminium anodised



### Mounting

Bore diameter of glass door = Ø 50 mm

Insert inner part and twist the two outer rings with plastic discs firmly against each other.



### Standard design

#### aluminium machined according to E 6

KWS 1 silver anodised	.41
KWS 2 nickel silver anodised	.42

#### brass

brushed and lacquered	.62
polished and lacquered	.66

#### stainless steel

brushed	.82
polished	.83

unit	1 piece
------	---------

#### Piece weight

aluminium	0.095 kg
brass	0.220 kg
stainless steel	0.200 kg



## 5251..

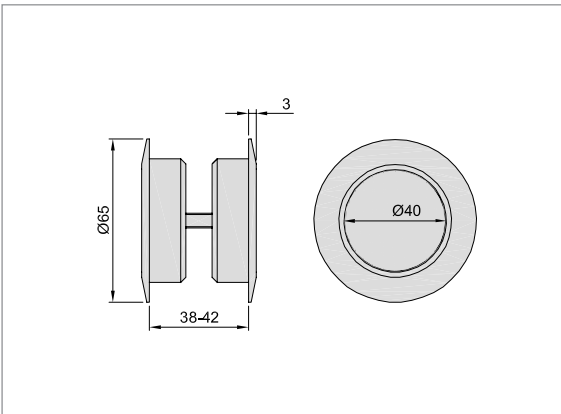
Ø 65 mm sliding door flush pull for doors 38 - 42 mm  
More door thicknesses from 32 mm on request



### Mounting

Bore diameter of wood door = Ø 50 mm

Insert one flush part, tighten counterpart with grub screw.



### Standard design

#### aluminium machined according to E 6

KWS 1 silver anodised	.41
KWS 2 nickel silver anodised	.42

#### stainless steel

brushed	.82
polished	.83

unit	1 piece
------	---------

#### Piece weight

aluminium	0.140 kg
brass	0.400 kg
stainless steel	0.405 kg

### Order example

Piece	Part no.	Finish no.
... Piece	5250	.41

**Standard design**

stainless steel

brushed .82

unit 1 piece

**Piece weight**

stainless steel 0.333 kg

**5260..**

65 x 65 mm

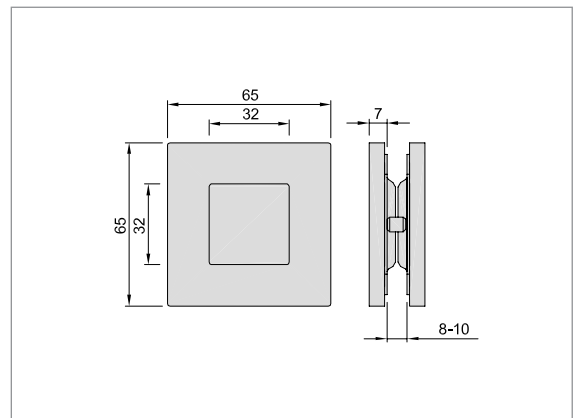
sliding door flush pull for glass doors 8 - 10 mm

4 x adhesive strips

**Mounting**

Bore diameter of glass door = Ø 50 mm

1. Mount flush female part:  
Remove foil from adhesive strips, align flush part angularly, stick it on with the bore hole in the centre and press it on firmly. (For aligning the flush part we recommend an angle gauge or auxiliary lines. Once fixed the flush part should not be removed again.)
2. Mount flush spindle part:  
Remove foil from the adhesive strips and stick the flush part on neatly and free of grease (aligned by the guide pins).
3. Press on both flush parts firmly, especially on the adhesive strips.
4. **The adhesive strips have to be left alone to harden for 24 hours.**

**Order example**

Piece	Part no.	Finish no.
... Piece	5260	.82



**5303..**

A	B	C	D	E
140	126	13	25	29

**5304..**

160	145	16	31	35
-----	-----	----	----	----

**5305..**

180	160	18	34	38
-----	-----	----	----	----

**5306..**

200	180	19	35	42
-----	-----	----	----	----

**5307..**

230	210	20	37	47
-----	-----	----	----	----

**Standard design**

**cast iron**

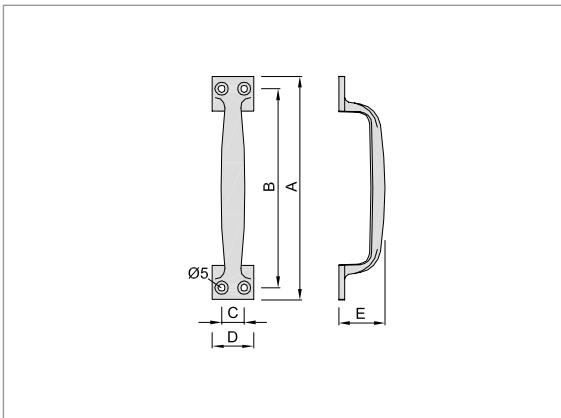
silver stove enamelled	<b>.02</b>
black stove enamelled	<b>.03</b>

packaging unit **5303.. 5304.. 5305.. 5306..** 10 pieces

packaging unit **5307..** 5 pieces

**Piece weight**

cast iron <b>5303..</b>	0.090 kg
<b>5304..</b>	0.170 kg
<b>5305..</b>	0.240 kg
<b>5306..</b>	0.300 kg
<b>5307..</b>	0.400 kg



light version

of grey iron casting with flush countersunk screw holes



**5309..**

A	B	C	D	E
180	159	25	43	56

**5310..**

200	175	25	44	57
-----	-----	----	----	----

**5311..**

235	210	30	49	56
-----	-----	----	----	----

**Standard design**

**cast iron**

silver stove enamelled	<b>.02</b>
black stove enamelled	<b>.03</b>

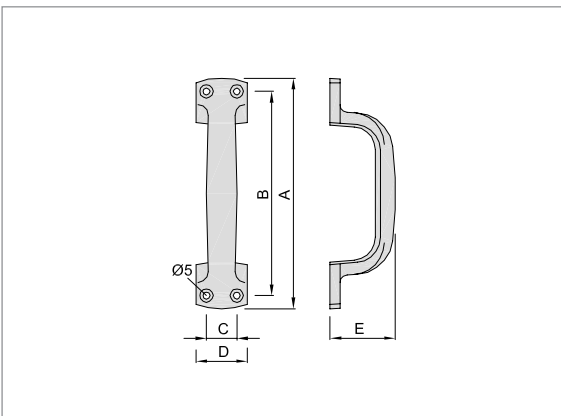
unit 5 pieces

**Piece weight**

cast iron <b>5309..</b>	0.490 kg
<b>5310..</b>	0.550 kg
<b>5311..</b>	0.680 kg

heavy version

of grey iron casting with flush countersunk screw holes



**Order example**

Piece	Part no.	Finish no.
... Piece	<b>5303</b>	<b>.02</b>

**Standard design**

**aluminium**

coloured plastic-coated	<b>.70</b>
-------------------------	------------

**aluminium machined according to E 5**

KWS 1 silver anodised	<b>.31</b>
KWS 2 nickel silver anodised	<b>.32</b>
KWS 3 gold anodised	<b>.33</b>
KWS 5 dark bronze anodised	<b>.37</b>

unit	10 pieces
------	-----------

**Piece weight**

aluminium	<b>5312..</b>	0.080 kg
	<b>5313..</b>	0.090 kg
	<b>5314..</b>	0.110 kg

**5312..**

A	B	C	D	E
140	125	15	30	44

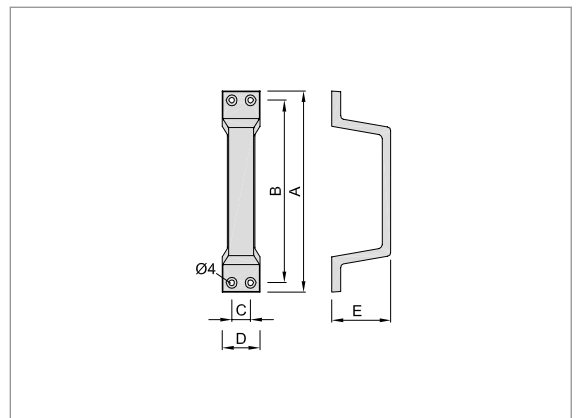
**5313..**

160	145	15	30	47
-----	-----	----	----	----

**5314..**

180	165	15	30	50
-----	-----	----	----	----

of aluminium casting with flush-countersunk screw holes



**Standard design**

**aluminium**

coloured plastic-coated	<b>.70</b>
-------------------------	------------

**aluminium machined according to E 5**

KWS 1 silver anodised	<b>.31</b>
KWS 2 nickel silver anodised	<b>.32</b>
KWS 3 gold anodised	<b>.33</b>
KWS 5 dark bronze anodised	<b>.37</b>

unit	10 pieces
------	-----------

**Piece weight**

aluminium	<b>5315..</b>	0.080 kg
	<b>5316..</b>	0.090 kg
	<b>5317..</b>	0.110 kg

**5315..**

A	B	C	D	E
140	125	15	30	44

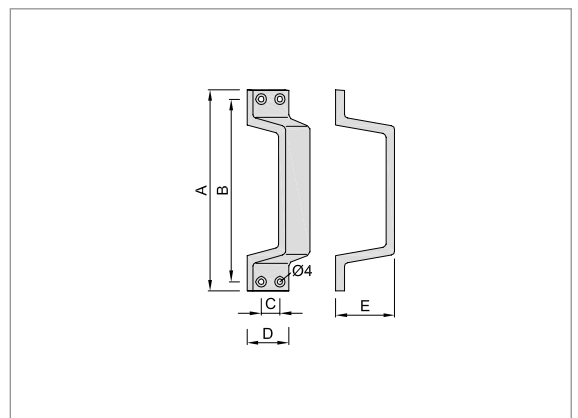
**5316..**

160	145	15	30	47
-----	-----	----	----	----

**5317..**

180	165	15	30	50
-----	-----	----	----	----

of aluminium casting with flush-countersunk screw holes offset



**Order example**

Piece	Part no.	Finish no.
... Piece	<b>5312</b>	<b>.31</b>





Page 30



Page 31



Page 32



Page 32



Page 33



Page 34



Page 35



Page 36



Page 37



Page 37



Page 38



Page 39



Page 39



Page 40



Page 40



Page 40



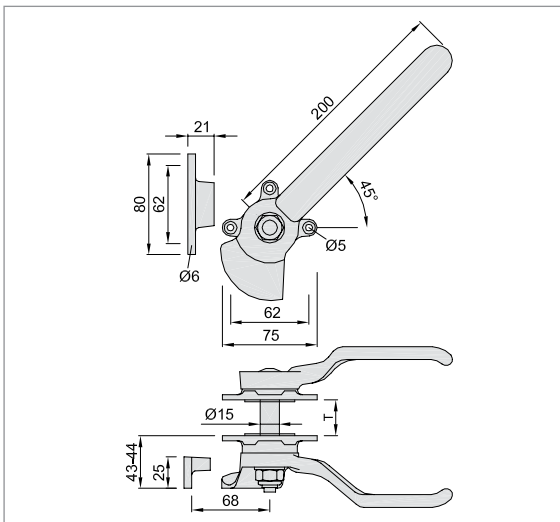
Page 40



Page 40



Page 40



**6001..**

**T = door thickness**

25 - 30 mm

**6002..**

30 - 35 mm

**6003..**

35 - 40 mm

**6004..**

40 - 45 mm

**6005..**

45 - 50 mm

**6006..**

50 - 55 mm

**6007..**

55 - 60 mm

**6008..**

60 - 65 mm

**6009..**

65 - 70 mm

**Standard design**

**malleable cast iron**

silver stove enamelled **.02**

hot galvanised **.07**

unit 1 piece

**Piece weight**

malleable cast iron 1.340 kg

for two-sided door operation of malleable cast iron with centre spindle of steel, with clamp, pressure spring, felt gasketing

other door thicknesses on request

**Mounting**

Bore a hole into the door for the spindle according to the dimensions of the below drawing, screw on the fixing rosettes with the shimmed felt gasketing in such a way that two screw holes each align with the centre hole horizontally or vertically, put through the spindle part and tighten the female part with laid-on pressure spring with a lock nut.

Fix the clamp in the relevant position in the door frame.

The actuation path of the lever is at 45°. The lock should be installed in such a way that the lever faces diagonally upwards at 45° in the open position.

Fig. depicts lock for left door

**Order example**

Piece	Part no.	Finish no.	right/left
... Piece	<b>6001</b>	<b>.02</b>	L



**Standard design**

**steel**

electro-galvanised	<b>.06</b>
--------------------	------------

**stainless steel**

brushed	<b>.82</b>
---------	------------

polished	<b>.83</b>
----------	------------

unit	1 piece
------	---------

**Piece weight**

steel	1.230 kg
-------	----------

stainless steel	1.180 kg
-----------------	----------

for two-sided door operation  
of steel or stainless steel,  
with lock plate, pressure spring,  
felt gasketing

Other door thicknesses on request

**Mounting**

Bore a hole into the door for the spindle according to the dimensions of the below drawing, screw on the fixing rosettes with the shimmed felt gasketing in such a way that two screw holes each align with the centre hole horizontally or vertically, put through the spindle part and tighten the female part with laid-on pressure spring with a lock nut.

Fix the lock plate in the relevant position in the door frame.

The actuation path of the lever is at 90°. The lock should be installed in such a way that the lever faces upwards in the open position.

usable for right and left.

**Order example**

Piece	Part no.	Finish no.
... Piece	<b>6101</b>	<b>.06</b>

**6101..**

**T = door thickness**

25 - 30 mm

**6102..**

30 - 35 mm

**6103..**

35 - 40 mm

**6104..**

40 - 45 mm

**6105..**

45 - 50 mm

**6106..**

50 - 55 mm

**6107..**

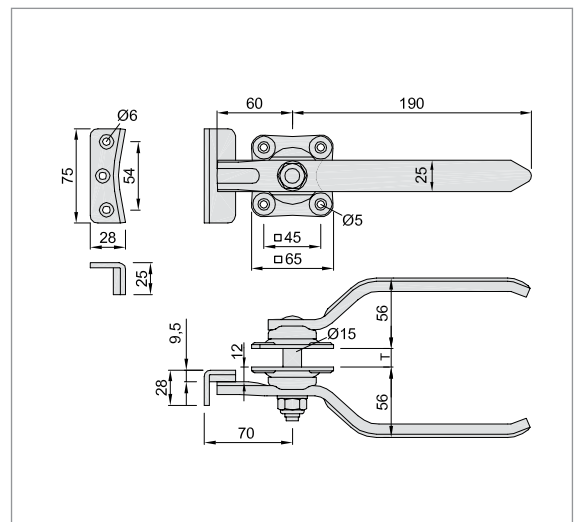
55 - 60 mm

**6108..**

60 - 65 mm

**6109..**

65 - 70 mm

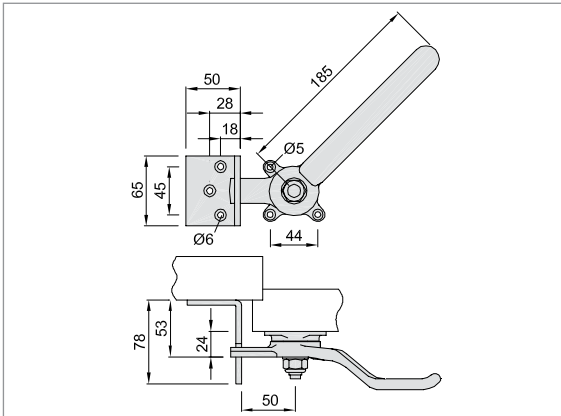




**6028..**

with angled strike plate for one-sided door operation, of malleable cast iron, angled strike plate of steel

Fig. depicts lock for right door



**Standard design**

**malleable cast iron**

silver stove enamelled	<b>.02</b>
hot galvanised	<b>.07</b>

unit	1 piece
------	---------

**Piece weight**

malleable cast iron	0.810 kg
---------------------	----------

**Mounting**

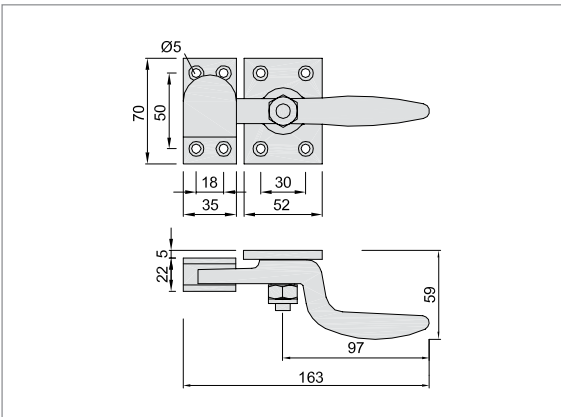
The lock is screwed on according to the dimensions of the drawing shown here and the strike plate fixed in the relevant position. The lock should be installed in such a way that the lever is level in the open position. The actuation path of the lever is at 45°.

Fig. depicts lock for right door



**6029..**

locking lever of malleable cast iron on base plate of steel, clamp of steel



**Standard design**

**malleable cast iron**

silver stove enamelled	<b>.02</b>
hot galvanised	<b>.07</b>

unit	5 pieces
------	----------

**Piece weight**

malleable cast iron	0.610 kg
---------------------	----------

**Order example**

Piece	Part no.	Finish no.	right/left
... Piece	<b>6028</b>	<b>.02</b>	R



**Standard design**

<b>steel</b>	
electro-galvanised	<b>.06</b>
<b>stainless steel</b>	
brushed	<b>.82</b>
polished	<b>.83</b>
unit	1 piece

**Piece weight**

steel	<b>6128..</b>	0.700 kg
	<b>6129..</b>	0.770 kg
stainless steel	<b>6128..</b>	0.680 kg
	<b>6129..</b>	0.750 kg

for one-sided door operation of steel or stainless steel

**Mounting**

The lock is screwed on according to the dimensions of the drawing shown here and the strike plate welded or screwed on in the relevant position. The lock should be mounted in such way that the lever is level when in closed position and facing downwards when in open position. The actuation path of the lever is at 90°.

**Note**

- 6128..**: usable for right and left
- 6129..**: when ordering please indicate right or left

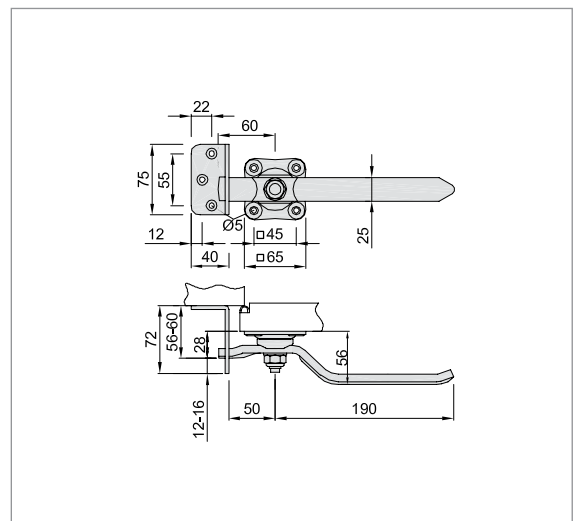
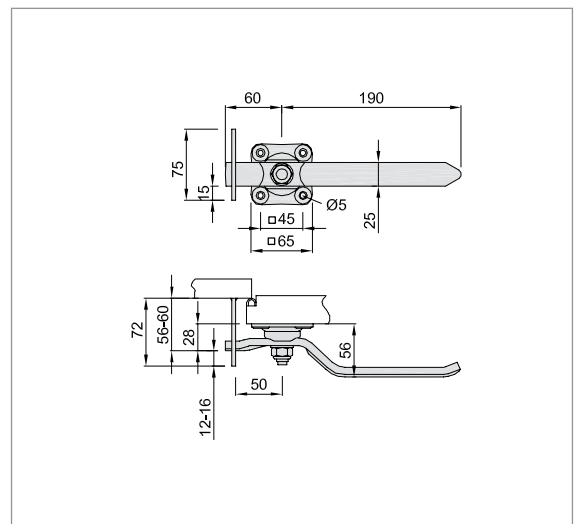
Fig. depicts lock for right door

**6128..**

with strike plate for welding on usable for right and left

**6129..**

with angled strike plate for screwing on



**Order example**

Piece	Part no.	Finish no.	right/left
... Piece	<b>6128</b>	<b>.06</b>	R





**Standard design**

handle and gear box of steel, zinc-electroplated	<b>.06</b>
Handle (with steel core insert) and additional gear box protective cover of aluminium machined according to E4 - KWS 1 silver anodised, gear box of steel, zinc-electroplated	<b>.22</b>
handle and gear box of steel, coloured plastic-coated	<b>.70</b>
handle and additional gear box protective cover of stainless steel brushed, gear box of steel, zinc-electroplated	<b>.82</b>
handle and additional gear box protective cover of stainless steel polished, gear box of steel, zinc-electroplated	<b>.83</b>

unit	1 piece
------	---------

**Piece weight**

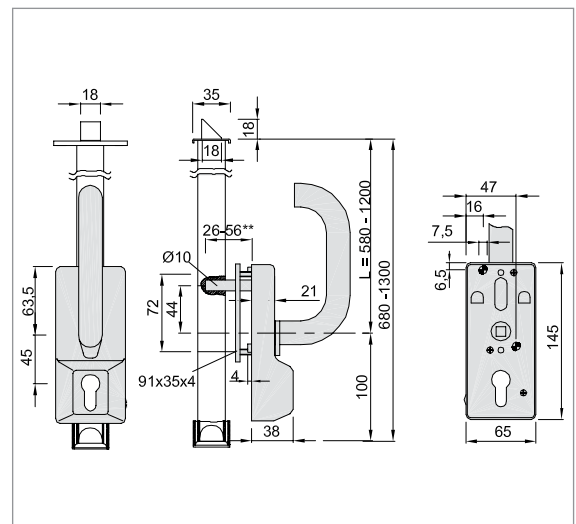
steel	0.810 kg
aluminium	0.910 kg
stainless steel	0.990 kg

**6693..**

gear box with fixed pivoting handle, lockable

For locking a standard profile half cylinder is required which is not included in the scope of supply. The cylinder prevents the actuation of the handle.

Tested and approved, in combination 6591.. to 6597.. by Staatl. Materialprüfungsamt North Rhine-Westfalia, Dortmund (Material Testing Institute). We are pleased to place a copy of the test report (P-120002485) at your disposal on request.



**Order example**

Piece	Part no.	Finish no.	Type
... Piece	<b>6693</b>	<b>.82</b>	T 30-2



**6591..**

L

580

**6592..**

up to 700

**6593..**

up to 800

**6594..**

up to 900

**6595..**

up to 1000

**6596..**

up to 1100

**6597..**

up to 1200

**Standard design**

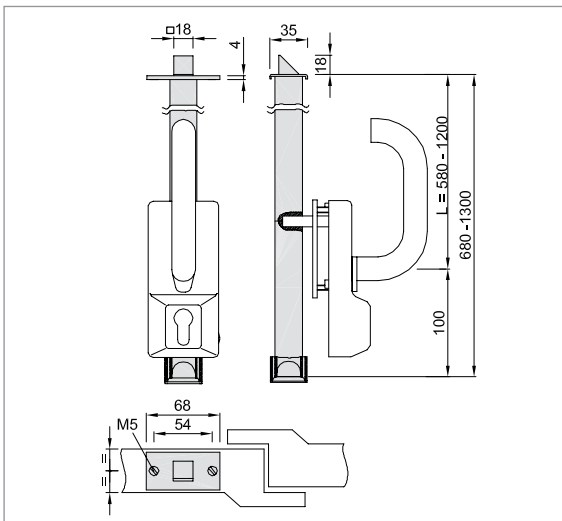
<b>steel</b>	
electro-galvanised	<b>.06</b>
unit	1 piece

latch (without gear box)

Tested and approved, in combination with **6693..** by Staatl. Materialprüfungsamt North Rhine-Westfalia, Dortmund (Material Testing Institute).

We are pleased to place a copy of the test report (P-120002485) at your disposal on request.

from **6091..** to **6097..** and **6791..** to **6797..**



**Order example**

Piece	Part no.	Finish no.	L
... Piece	<b>6591</b>	<b>.06</b>	580

**Standard design**

**stainless steel**

brushed **.82**

unit 1 piece

**Piece weight**

stainless steel 0.396 kg

**Mounting**

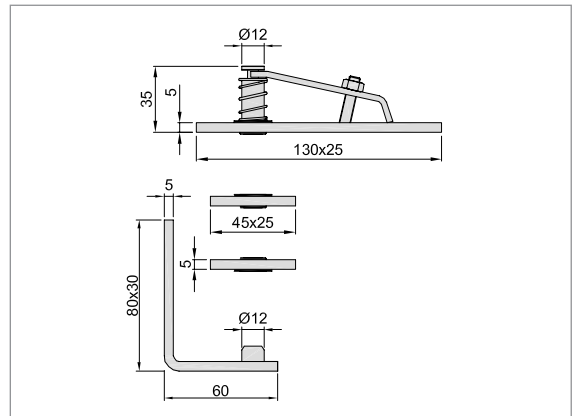
Fix hinge bottom part on door frame. Insert hinge top part into the door frame. Insert spindle receiving parts into the door leaf. Put door leaf onto the hinge bottom part (90° to the door frame). Screw top spindle by means of adjusting screw in the door leaf.

Please refer to the mounting drawing enclosed with the product for further information.

**6206..**

For doors up to 60 kg without needle bearing

Door hinge with pivot spindle of stainless steel for unrehabed doors



**Standard design**

**stainless steel**

brushed **.82**

unit 1 piece

**Piece weight**

stainless steel 0.402 kg

**Mounting**

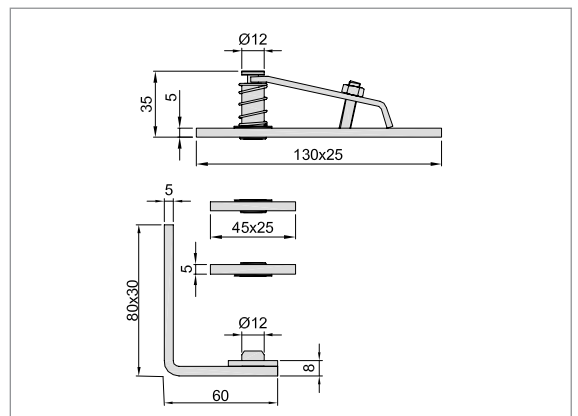
Fix hinge bottom part on door frame. Insert hinge top part into the door frame. Insert spindle receiving parts into the door leaf. Put door leaf onto the hinge bottom part (90° to the door frame). Screw top spindle by means of adjusting screw in the door leaf.

Please refer to the mounting drawing enclosed with the product for further information.

**6207..**

For doors up to 80 kg with needle bearing

Door hinge with pivot spindle of stainless steel for unrehabed doors



**Order example**

Piece	Part no.	Finish no.
... Piece	<b>6206</b>	<b>.82</b>



**6208..**

for doors up to 120 kg with needle bearing

door hinge with pivot spindle of stainless steel for unrebated doors



**Standard design**

<b>stainless steel</b>	
brushed	<b>.82</b>

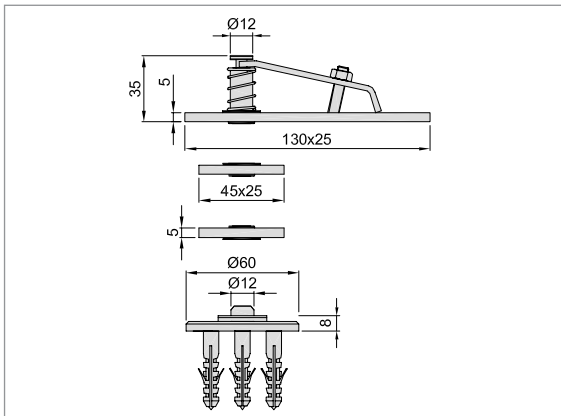
unit	1 piece
------	---------

**Piece weight**

stainless steel	0.386 kg
-----------------	----------

**Mounting**

Mount hinge bottom part on the floor. Insert hinge top part into the door frame. Insert spindle receiving parts into the door leaf. Put door leaf onto the hinge bottom part (90° to the door frame). Screw top spindle by means of adjusting screw in the door leaf. Please refer to the mounting drawing enclosed with the product for further information.



**Order example**

Piece	Part no.	Finish no.
... Piece	<b>6208</b>	<b>.82</b>

**Standard design**

<b>stainless steel</b>	
brushed	<b>.82</b>
unit	1 piece

**Piece weight**

stainless steel	0.176 kg
-----------------	----------

**Mounting**

The mounting is effected on the door frame on the lock side. Please refer to the mounting drawing enclosed with the product for further information.

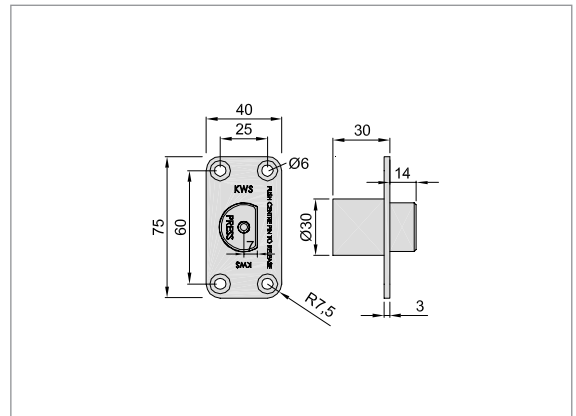
**6250..**

door stop with hold-back facility

**6252..**

door stop with hold-back facility with additional release

for unrebated doors  
emergency opening to the outside, especially for toilet doors in combination with door hinge **6206.. 6207.. 6208..**



**Standard design**

<b>stainless steel</b>	
brushed	<b>.82</b>
unit	1 piece

**Piece weight**

stainless steel	0.225 kg
-----------------	----------

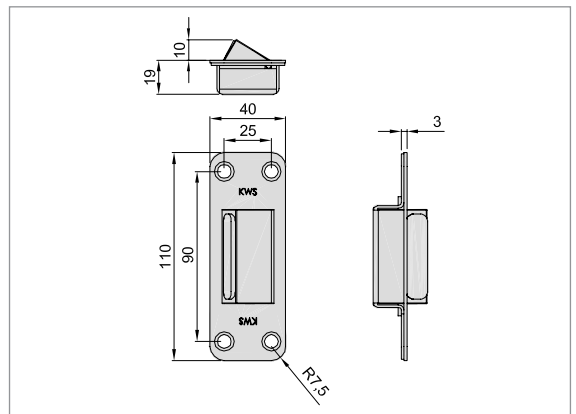
**Mounting**

The mounting is effected on the door frame on the lock side. Please refer to the mounting drawing enclosed with the product for further information.

**6251..**

door stop for depressing

for unrebated doors  
emergency opening to the outside, especially for toilet doors in combination with door hinge **6206.. 6207.. 6208..**



**Order example**

Piece	Part no.	Finish no.
... Piece	<b>6250</b>	<b>.82</b>



**6531..**

strike plate

**Please indicate:  
right or left handed**

**Standard design**

see 6028..

**steel**

silver stove enamelled	.02
hot galvanised	.07

unit	1 piece
------	---------



**6533..**

catch

**Standard design**

see 6029..

**steel**

silver stove enamelled	.02
hot galvanised	.07

unit	1 piece
------	---------



**6536..**

catch

**Standard design**

see 6001.. to 6009....

**cast iron**

silver stove enamelled	.02
hot galvanised	.07

unit	1 piece
------	---------



**6537..**

catch



**Standard design**

see 6101.. to 6109....

**steel**

electro-galvanised	.06
--------------------	-----

**stainless steel**

brushed	.82
polished	.83

unit	1 piece
------	---------



**6538..**

strike plate

**Please indicate:  
right or left handed**

**Standard design**

6538.. see 6129..

6539.. see 6128..

**steel**

electro-galvanised	.06
--------------------	-----

**stainless steel**

brushed	.82
polished	.83

unit	1 piece
------	---------



**6539..**

strike plate



**Order example**

Piece	Part no.	Finish no.	right/left
... Piece	6531	.07	R



# Appendix

## Numbers Chart

Article	Page	Article	Page	Article	Page
5001..	8	5134..	14	6104..	31
5002..	8	5135..	14	6105..	31
5004..	9	5147..	15	6106..	31
5005..	9	5148..	15	6107..	31
5007..	9	5160..	17	6108..	31
5008..	9	5161..	17	6109..	31
5010..	9	5162..	17	6128..	33
5011..	9	5163..	17	6129..	33
5013..	10	5164..	17	6206..	37
5014..	10	5165..	17	6207..	37
5016..	11	5166..	17	6208..	38
5017..	11	5167..	17	6250..	39
5019..	11	5201..	21	6251..	39
5020..	11	5202..	21	6252..	39
5022..	11	5203..	21	6531..	40
5023..	11	5205..	22	6533..	40
5025..	13	5206..	22	6536..	40
5026..	13	5207..	23	6537..	40
5028..	13	5208..	23	6538..	40
5029..	13	5250..	24	6539..	40
5031..	13	5251..	24	6591..	36
5032..	13	5260..	25	6592..	36
5034..	14	5303..	26	6593..	36
5035..	14	5304..	26	6594..	36
5037..	14	5305..	26	6595..	36
5038..	14	5306..	26	6596..	36
5040..	14	5307..	26	6597..	36
5041..	14	5309..	26	6693..	35
5043..	16	5310..	26	6791..	34
5044..	16	5311..	26	6792..	34
5045..	16	5312..	27	6793..	34
5046..	16	5313..	27	6794..	34
5047..	15	5314..	27	6795..	34
5048..	15	5315..	27	6796..	34
5051..	12	5316..	27	6797..	34
5054..	10	5317..	27		
5055..	18	5907..	9		
5056..	18	5908..	9		
5058..	18	5919..	11		
5059..	18	5920..	11		
5061..	19	5928..	13		
5062..	19	5929..	13		
5064..	19	5937..	14		
5065..	19	5938..	14		
5072..	20				
5073..	20	6001..	30		
5074..	20	6002..	30		
5075..	20	6003..	30		
5101..	8	6004..	30		
5102..	8	6005..	30		
5104..	9	6006..	30		
5105..	9	6007..	30		
5113..	10	6009..	30		
5114..	10	6028..	32		
5116..	11	6029..	32		
5117..	11	6101..	31		
5125..	13	6102..	31		
5126..	13	6103..	31		

**Short symbols for the finishes of aluminium**

material aluminium anodisable surface treatment subsequently anodised and compacted	Short symbol	1 Effect on surface damage (die marks - slight damage) 2 Structure and appearance
<b>ground - brush-finished</b>	<b>E 4</b>	1 up to completely removed 2 evenly dull-bright
<b>ground - polished</b>	<b>E 5</b>	1 to completely removed 2 smooth and highly brilliant to reflecting
<b>chemically pickled</b>	<b>E 6</b>	1 partly to mostly set off 2 variation option from dull to matt gleaming

**Finish codes**

raw steel, untreated surface	<b>.01</b>
silver stove enamelled	<b>.02</b>
black stove enamelled	<b>.03</b>
gold stove enamelled	<b>.04</b>
electro-galvanised	<b>.06</b>
hot galvanised	<b>.07</b>
dark brown stove enamelled	<b>.10</b>
special stove enamelled finish	<b>.19</b>

**Aluminium E 4**

natural finish, surface untreated	<b>.20</b>
ground and brushed	<b>.21</b>
KWS 1 silver anodised	<b>.22</b>
KWS 2 nickel silver anodised	<b>.23</b>
KWS 3 gold anodised	<b>.24</b>
special anodised colour	<b>.26</b>
KWS 4 light bronze anodised	<b>.27</b>
KWS 5 dark bronze anodised	<b>.28</b>
KWS 6 black anodised	<b>.29</b>

**Aluminium E 5**

natural finish, ground and polished	<b>.30</b>
KWS 1 silver anodised	<b>.31</b>
KWS 2 nickel silver anodised	<b>.32</b>
KWS 3 gold anodised	<b>.33</b>
brushed stainless steel effect anodised	<b>.35</b>
KWS 4 light bronze anodised	<b>.36</b>
KWS 5 dark bronze anodised	<b>.37</b>
KWS 6 black anodised	<b>.38</b>
special anodised colour	<b>.39</b>

**Aluminium E 6**

natural finish, chemical dipped	<b>.40</b>
KWS 1 silver anodised	<b>.41</b>
KWS 2 nickel silver anodised	<b>.42</b>
KWS 3 gold anodised	<b>.43</b>
KWS 4 light bronze anodised	<b>.46</b>
KWS 5 dark bronze anodised	<b>.47</b>
KWS 6 black anodised	<b>.48</b>
special anodised colour	<b>.49</b>

**Brass**

natural finish	<b>.60</b>
brushed and waxed	<b>.61</b>
brushed and lacquered	<b>.62</b>
nickel plated	<b>.63</b>
polished and waxed	<b>.65</b>
polished and lacquered	<b>.66</b>

**Plastic coated colours**

	<b>.70</b>
golden yellow	RAL 1004
flame red	RAL 3000
ruby red (.76)	RAL 3003
wine red	RAL 3005
sapphire blue (.75)	RAL 5003
brilliant blue	RAL 5007
azure blue	RAL 5009
leaf green	RAL 6002
moss green	RAL 6005
olive drab	RAL 6022
stone grey	RAL 7030
sepia brown	RAL 8014
mahogany brown	RAL 8016
dark brown (.74)	RAL 8077
grey white	RAL 9002
pure white (.71)	RAL 9010
graphite black (.73)	RAL 9011
traffic white (.72)	RAL 9016
other RAL colours on request	

**Stainless steel**

natural finish	<b>.80</b>
brushed	<b>.82</b>
polished	<b>.83</b>

**Plastic / rubber / wood**

PVC	<b>.95</b>
rubber	<b>.96</b>
beech wood	<b>.98</b>

## HELM Range

TEH_01	Hardware for Sliding Wardrobe Doors
TEH_02H	Hardware for Sliding Doors (Wood)
TEH_02G	Hardware for Sliding Doors (Glass)
TEH_02D	Design Hardware for Sliding Doors (Wood and Glass)
TEH_06	Hardware for Sliding Gates
TEH_09	Hardware for Gateway Gates
TEH_11	Hardware for Curtains and Tarpaulins
TEH_12	Safety Equipment against Falls from a Height (PSE)
TEH_40	Hardware for Sliding Shutters



TEH\_01



TEH\_02H



TEH\_02G



TEH\_02D



TEH\_06



TEH\_09



TEH\_11



TEH\_12



TEH\_40

## KWS Range

TEK_0102	Door Holders and Door Stops
TEK_0308	Door Pulls, Door Handles and Accessories
TEK_0506	Flush Pulls and Locks
TEK_0407	Hardware for Handrails, Floor Rails, Coat Racks and Toilet Partition Walls



TEK\_0102



TEK\_0308



TEK\_0506



TEK\_0407

The technical specifications are up-to-date. We reserve the right to make modifications with regard to design and styling which serve the purpose of technical improvement. We appreciate your understanding that we assume no liability for any typing errors or any other errors. The reproduction of this document, in extracts or complete, is not permitted without our express written permission.

Part no.: TEK\_0506/05.2013  
This catalogue supersedes all previous catalogues.

### Woelm GmbH

Hasselbecker Str. 2-4  
D - 42579 Heiligenhaus  
Phone: + 49 (0) 20 56 - 18 - 0  
Telefax: + 49 (0) 20 56 - 18 - 21  
www.helmkws.de  
contact@woelm.de

### Woelm Austria GmbH

Seewalchen 5a  
A - 5201 Seekirchen  
Phone: + 43 (0) 62 12 - 25 02  
Telefax: + 43 (0) 62 12 - 69 95  
www.helmkws.at  
contact@woelm.co.at