

STREETPOD

The Streetpod is our latest revolutionary cycle storage design! This highly secure and stylish product offers maximum bike protection for public location and open spaces, where bike security is a concern.

The Streetpod is Secured by Design accredited and UK police recommended, it is also the only free-standing cycle parking solution in the UK which has achieved Sold Secure Silver certification.

The front wheel is housed within the security shield which prohibits it from being removed.

The Streetpod has the ability to secure the bike frame and both wheels with a single lock. This highly configurable design can also accommodate advertising and sponsorship.



Product Name: Streetpod—SBD

Panel Material: Medium density polyethylene (MDPE), Black version is recycled and recyclable, where as colour versions are just recyclable.

Wall Thickness: 7-9 mm. 65mm channel/ track width to cater for 99% of all standard European tyre width's.

Finish: Dimpled effect. Standard colour black, other colours available at additional cost.

Product Weight: 20kg each.

Securing loop: Galvanised Steel as standard, Stainless steel option available.

Securing loop thickness: 50 mm diameter, with 3.2mm thickness . 20mm solid securing bar.

Fixing Method for loop Arms: Fixed to floor using ground anchors/resin.

Fixings Material: All standard Streetpod fixings are Galvanised/Stainless steel. Ground anchors are nickel plated.

Ground Fixings Required: 3 types: 16mm outer diameter shield anchor bolts drilled to a depth of 100mm max . Self using M14 Sheer off nuts and resin. 5 fixing bolt required per Streetpod.

Ground Type Required: Solid level base required. Concrete, large slabs with minimum 50mm thickness.

Internal fixings: Shear off nuts + Loc tight to be used on all internal fixings.

Product Code: STREET001

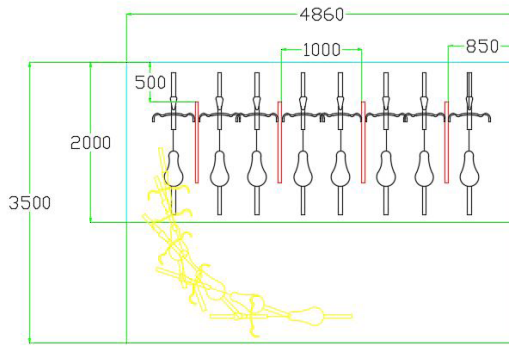
Colour Options: Standard in Black (Recyclable) Red, Yellow, Royal Blue, Light Blue, Dark Green, Light Green, Grey, Stone effect and multicolour available.

Various shelter options available for all products.

STREETPOD SPACE SAVINGS

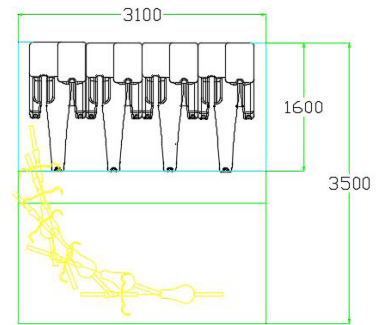
BREEAM/CODE for Sustainable homes bike stand layout

Space required = 16.8 square meters



BREEAM/CODE for Sustainable homes Streetpod layout

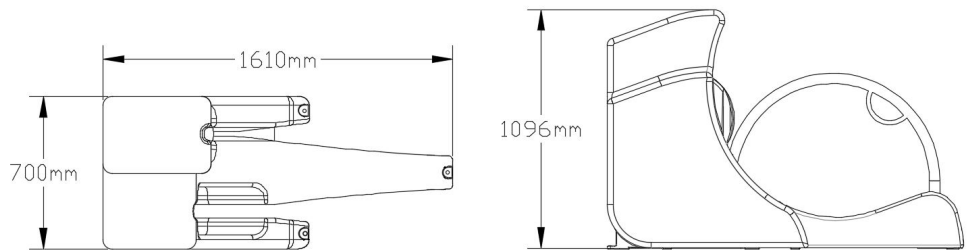
Space required = 10.85 square meters



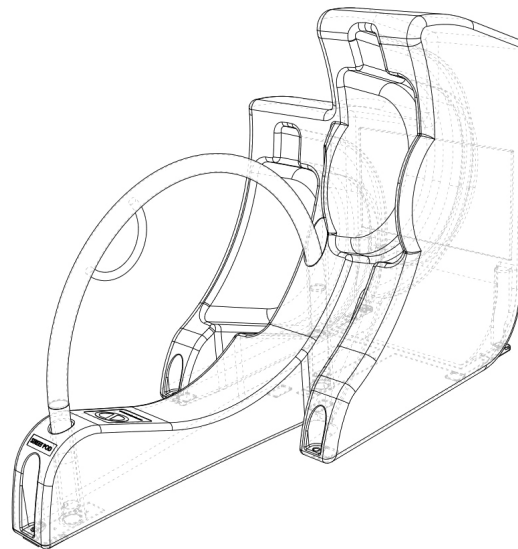
— Roll out space required
— Static space required
— Bike in roll out position

Streetpod- 35% less space used

STREETPOD DIMENSIONS



STREETPOD 3D VIEW



Secured by Design



Police Preferred Specification



HOW TO LOCK YOUR BIKE TO THE STREETPOD:

