

**FIRE RIVER™ - (with CVO Fire Ribbon™ Technology)**

Index Number : 54, Rev-15, Page 1 of 2 (29-Jul-2015)

CVO Fire : 01325-301020 : [www.cvo.co.uk](http://www.cvo.co.uk) : [sales@cvo.co.uk](mailto:sales@cvo.co.uk)

**PURCHASE OPTIONS:**

This modern gas fire has been designed to allow installation into any home with a chimney and has minimal depth. This gas fireplace is supplied as a complete package which includes the gas burner, remote control system and enclosure. The standard fire is timeless+allowing a letterbox style installation however there are a wide range of metal and stone trims which can be added. The fire is operated by a modern remote system with a thermostatic function, this can be used to set to a desired room temperature and the remote will automatically adjust the flame. There is an optional gather and we can supply any flue pipes. We advise buying these with the fire to get the best prices and to avoid delays on site. The standard fire has a clean ribbon of flame however logs or pebbles can be added if required.

**Gas Burner :** This is available for Natural Gas or LPG/Propane.

**Ignition :** The fire is supplied with a battery remote operated by a digital hand set (see note above).

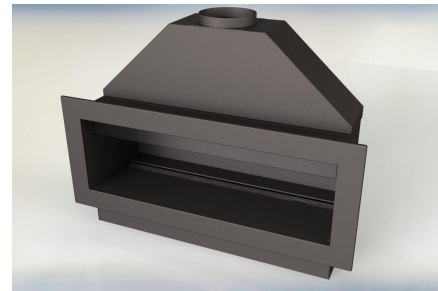
**Enclosure :** A range of finishes available including : polished, brushed or black steel.

**Fascia Options :** If a trim is required it can be supplied in a wide range of metal and stone finishes.

**Ceramics:** Logs and Pebbles (supplied by CVO fire) can be added.

**SELECT THE CORRECT VERSION:**

- There are two versions available; this must be specified when ordering as fire cannot be changed after delivery.
- **Class 2 :** This can be used with either a Class 1 or Class 2 chimney or a minimum of 3m of 125mm flue liner. This version does not need any air ventilation from the outside air. The fire has a small 65mm glass slip at the top of the enclosure opening.
- **Class 1 :** This can only be used in a Class 1 chimney or a minimum of 2m of 178mm flue liner. This version does not have the small glass panel and requires a 100cm<sup>2</sup> air vent to outside to provide ventilation into the room.
- It is advised to purchase the Class 2 version as it requires no air vent and is more efficient.



**CE APPROVAL:**

The FIRE RIBBON is CE approved for the following gas categories and can be installed in all EU Countries.

- **NATURAL GAS :** I2H-G20-20mBar, I2E-G20-20mBar, NG-I2E<sup>+</sup>-G20/G25-20/25mBar
  - 7.4kw [33p/hour] Flow Rate : 0.8m<sup>3</sup>/Hour
- **LPG/Propane :** LPG-I3P(37)-G31-37mBar
  - 7.4kw [45p/hour] Flow Rate: 0.5m<sup>3</sup>/Hour

**DIMENSIONS:**

- See page 2 for all the dimensions.
- Other CAD drawings are available upon request.

**OTHER TECHNICAL INFORMATION:**

1. **Ventilation :** See comments above>Select the Correct Version+
2. **Pipe Work :** Before installation a site survey should be done to ensure the pipe work is checked, flow rated and if required upgraded to allow the flow rate as specified above.
3. **Flue/Chimney System\_:** See comments above>Select the Correct Version+
4. **Burner Ventilation :** As with all gas fires burner air is required from the room (not outside), this also keep the remote cool. The fire is designed to allow this air to be supplied easily if using the standard trim as there is a air slot hidden behind the trim. If the fire is being installed as timeless+like a letterbox style sir must be ducted into the bottom of the burner chamber. We have a guidance sheet on how this is easily done during installation. If you are planning to not use the trim call sales for a copy of Spec-103.
5. The fire is operated by a AA+battery powered remote system with a digital handset. This is a very modern system which includes information displayed on the handset like room temperature and error codes. There is an option to purchase a mains upgrade for the remote system however the batteries should last between 12 and 24 months. The remote is fully sequential and operates the fire in a range of modes including thermostatic and sleep timer. For more information on our unique and modern remote system call sales.

=====

CVO reserve the right to amend and improve the specification sheets without prior notice. If in doubt about any aspect of this specification please call. The specification is not to be used to install the fireplace. Every fire is supplied with an official install booklet. Spirit Fires Limited own the Spirit, CVO and Firevault Trademarks. Copying and distribution of these specifications is not permitted without the permission of Spirit Fires Ltd. All dimensions include a +/-2mm tolerance.

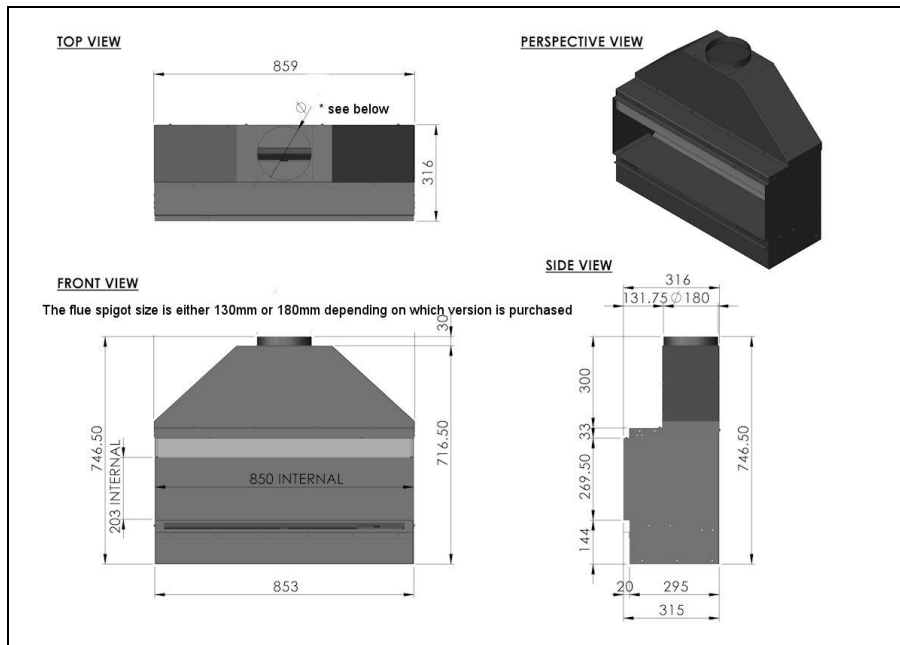
Spirit Fires Ltd, 4 Beaumont Square, Durham Way South, Newton Aycliffe, County Durham, DL5 6XN  
Sales: +44 (0)1325-301020 Office: +44 (0) 1325 327 221 Fax: +(0)1325 327 292 Email: [sales@cvo.co.uk](mailto:sales@cvo.co.uk) Web: [www.cvo.co.uk](http://www.cvo.co.uk)

SHOWROOM: CVO Fires can be seen live in our FIREVAULT showrooms based in the North and South of the UK.  
Visit [www.firevault.co.uk](http://www.firevault.co.uk) or call 01325-301020 for full contact details, location maps and directions.

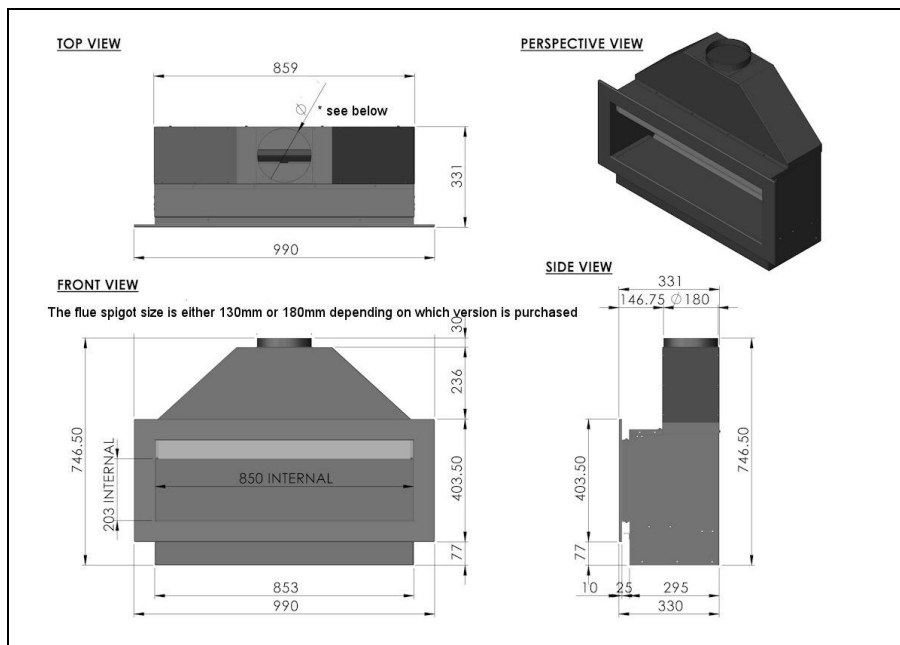
**FIRE RIVER™ - (with CVO Fire Ribbon™ Technology)**

Index Number : 54, Rev-15, Page 2 of 2 (29-Jul-2015)

CVO Fire : 01325-301020 : [www.cvo.co.uk](http://www.cvo.co.uk) : [sales@cvo.co.uk](mailto:sales@cvo.co.uk)



Above . No Fascia, Below . With Fascia



=====

CVO reserve the right to amend and improve the specification sheets without prior notice. If in doubt about any aspect of this specification please call. The specification is not to be used to install the fireplace. Every fire is supplied with an official install booklet. Spirit Fires Limited own the Spirit, CVO and Firevault Trademarks. Copying and distribution of these specifications is not permitted without the permission of Spirit Fires Ltd. All dimensions include a +/-2mm tolerance.

Spirit Fires Ltd, 4 Beaumont Square, Durham Way South, Newton Aycliffe, County Durham, DL5 6XN  
Sales: +44 (0)1325-301020 Office: +44 (0) 1325 327 221 Fax: +(0)1325 327 292 Email: [sales@cvo.co.uk](mailto:sales@cvo.co.uk) Web: [www.cvo.co.uk](http://www.cvo.co.uk)

SHOWROOM: CVO Fires can be seen live in our FIREVAULT showrooms based in the North and South of the UK. Visit [www.firevault.co.uk](http://www.firevault.co.uk) or call 01325-301020 for full contact details, location maps and directions.