

SLIDE

Children's Cubicle Range

Durability



LOW → HIGH



Moisture Resistance



LOW → HIGH



Can be upgraded to SGL for extra durability and moisture resistance. Ask our sales team for more information



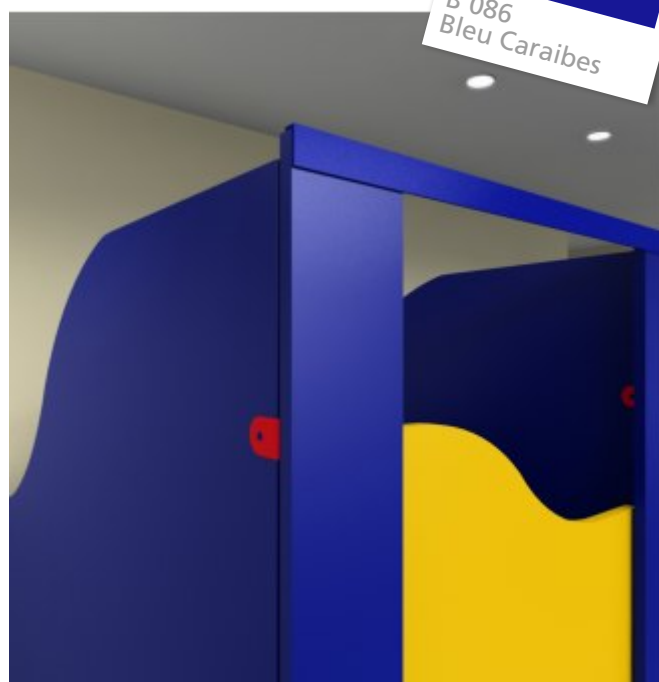
Finishes Used in this Example

G 031
Genet

B 086
Bleu Caraibes

The Slide Range has a choice of three door/partition heights and two different shapes. Slide is suitable for children up to secondary school. The range is supplied with red, yellow and blue powder coated fittings as standard. For ultimate durability this range can be upgraded to Solid Grade Laminate. The Slide range has shaped low-level partitions and doors to help with adult supervision and can also be supplied with a magnetic catch for the youngest of children.

Suitable for	Schools, Nurseries
Board	18mm M.R Chipboard/MDF Core Laminated 2 Sides with HPL / Option to Upgrade to SGL
Edging	2mm ABS for extra durability
Fittings	Powder Coated Colourful Fittings
Usage	Medium – High Usage suitable for young children



Detail Shot

Images are for example purposes only. Some fixings may be visible from the outside on finished product.

SLIDE RANGE

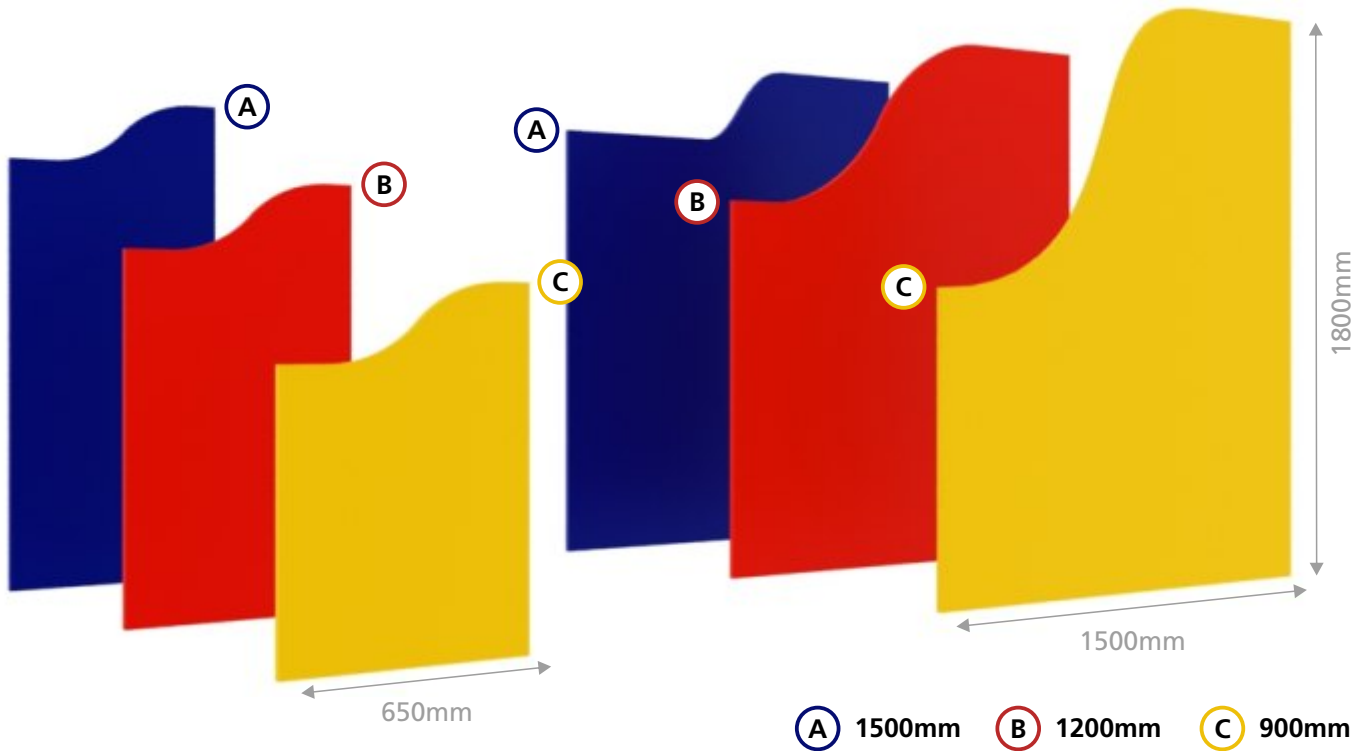
Standard Sizes

Tel: 0845 180 0656

Fax: 0161 790 9625

Email: sales@cubiclesanddoors.co.uk

www.cubiclesanddoors.co.uk

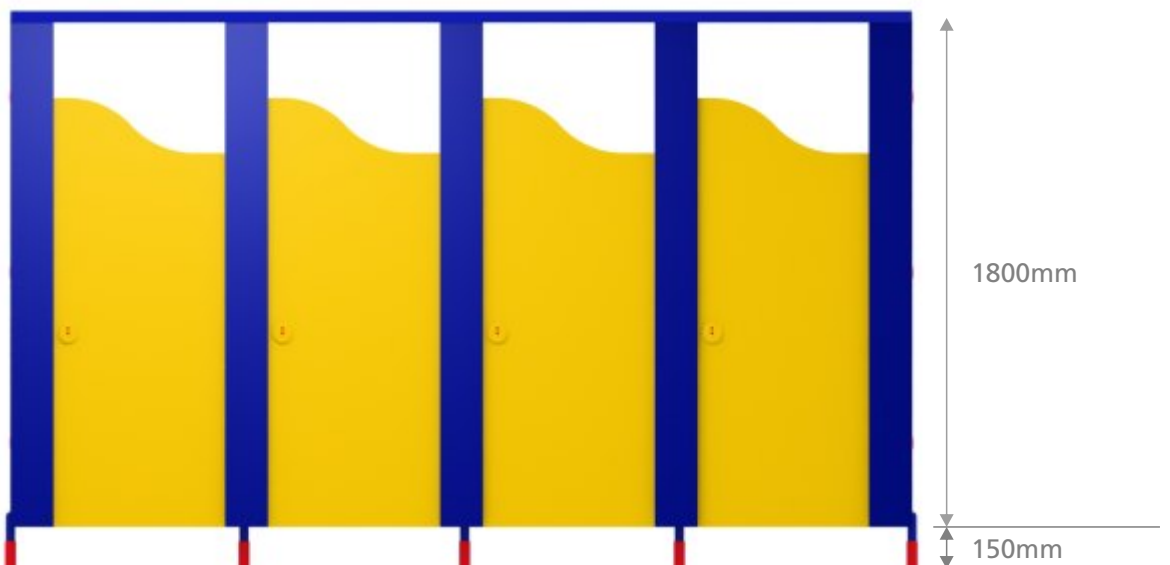


Doors:

Heights A, B & C x 650mm wide

Partitions:

1800mm high (shaped down to height A, B and C)
x 1500mm wide



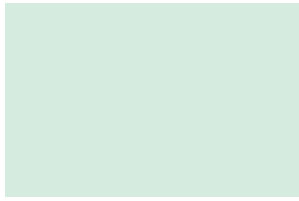
Cubicles:

End Pilasters - 1800mm high x 100mm wide. Mid Pilasters - 1800mm high x 200mm wide

Standard sizes shown are based on a cubicle size of 800mm wide x 1500mm deep.

COLOUR GUIDE

Polyrey SGL and HPL Ranges



A 014 - Aigue Marine
HPL, SGL LV 0.69



A 036 - Amandine
HPL, SGL LV 0.57



B 001 - Bleu Flash
HPL, SGL LV 0.13



B 012 - Blanc Antique
HPL, SGL LV 0.85



B 015 - Blanc Menuires
HPL, SGL LV 0.83



B048 - Bleu Oslo
HPL, SGL LV 0.51



B 070 - Blanc Megeve
HPL, SGL LV 0.85



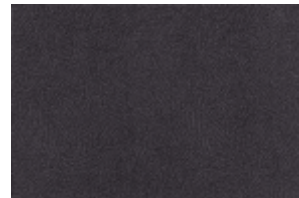
B 086 - Bleu Carabes
HPL, SGL LV 0.09



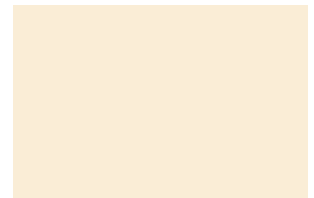
B100 Banian Blanchi
HPL, SGL LV 0.40



B101 Banian Noirci
HPL, SGL LV 0.10



C011 - Caviar
HPL, SGL LV 0.10



C017 - Coquille d'Oeuf
HPL, SGL LV 0.70



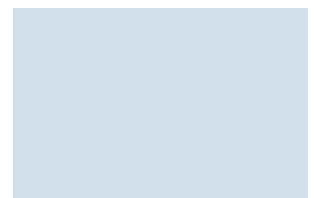
C018 - Chardon
HPL, SGL LV 0.19



C062 - Capucine
HPL, SGL LV 0.16



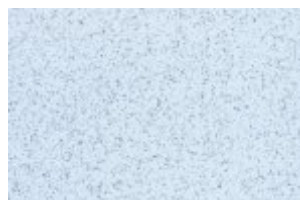
E028 - Erable Nordique
HPL, SGL LV 0.58



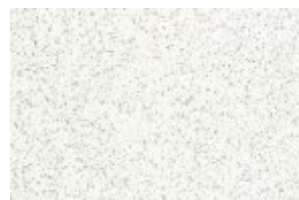
F008 Fumee
HPL, SGL LV 0.66



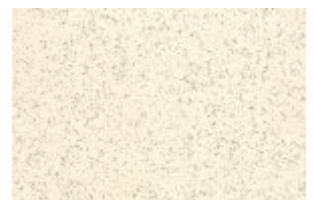
G003 - Gris Perle
HPL, SGL LV 0.37



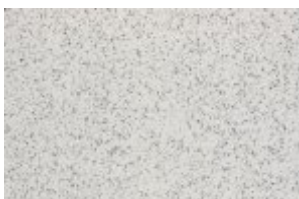
G014 - Galeo Bleu Oslo
HPL, SGL LV 0.51



G023 - Galeo Blanc Megeve
HPL, SGL LV 0.72



G025 - Galeo Coquille d'Oeuff
HPL, SGL LV 0.69



G026 - Galeo Gris Perle
HPL, SGL LV 0.37



G027 - Galeo Gris Tourtelle
HPL, SGL LV 0.55



G029 - Gris Tourtelle
HPL, SGL LV 0.55



G031 Genet
HPL, SGL LV 0.59

**KEY: HPL = HIGH PRESSURE LAMINATE. MFC = MELAMINE FACED CHIPBOARD. SGL = SOLID GRADE LAMINATE
LV = LUMINESCENCE VALUE.**

COLOUR GUIDE

Polyrey SGL and HPL Ranges



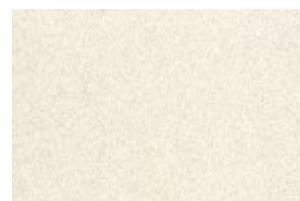
G032 Galeo Rose Tendre
HPL, SGL LV 0.58



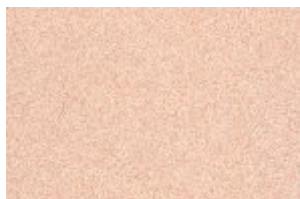
G034 Galeo Rose Bougain
HPL, SGL LV 0.18



H025 Pommier de Honfleur
HPL, SGL LV 0.45



L016 Luna Beige
HPL, SGL LV 0.64



L017 Luna Rose
HPL, SGL LV 0.59



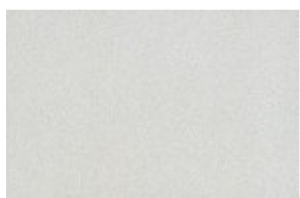
L018 - Luna Vert
HPL, SGL LV 0.60



L033 - Linea Bleu Oslo
HPL, SGL LV 0.43



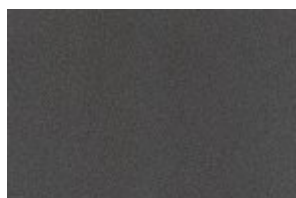
L034 - Linea Rose Bougain
HPL, SGL LV 0.18



M001 Maryland Clair
HPL, SGL LV 0.56



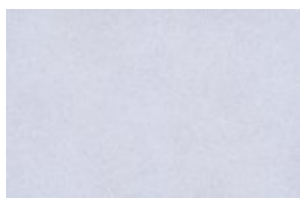
M002 - Maryland Moyen
HPL, SGL LV 0.29



M003 - Maryland Fonce
HPL, SGL LV 0.14



M047 - Mousse
HPL, SGL LV 0.35



N022 - Nova Lilas
HPL, SGL LV 0.51



N023 - Nova Saphir
HPL, SGL LV 0.24



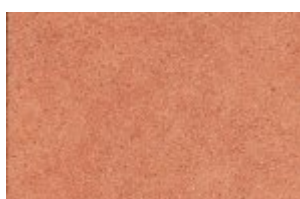
N026 - Noyer Ombre
HPL, SGL LV 0.16



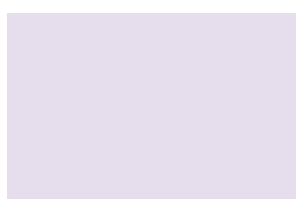
N027 - Noyer Venitien
HPL, SGL LV 0.27



N028 - Nova Mousse
HPL, SGL LV 0.35



N049 - Nova Argile
HPL, SGL LV 0.29



R021 - Rose Tendre
HPL, SGL LV 0.55



R036 - Rouge Cerise
HPL, SGL LV 0.11



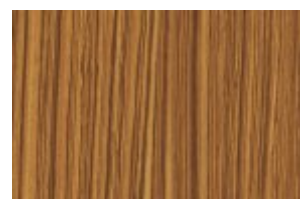
S018 - Schiste
HPL, SGL LV 0.11



V011 - Vert d'Eau
HPL, SGL LV 0.69



Y022 - Rose Bougainville
HPL, SGL LV 0.18



Z009 - Zebrano Ambre
HPL, SGL LV 0.15

**KEY: HPL = HIGH PRESSURE LAMINATE. MFC = MELAMINE FACED CHIPBOARD. SGL = SOLID GRADE LAMINATE
LV = LUMINESCENCE VALUE.**

COLOUR GUIDE

Arpa Athlon Plain Colours



001
HPL, SGL LRV 82



0204
HPL, SGL LRV 82



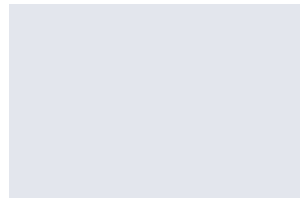
0211
HPL, SGL LRV 43



0218
HPL, SGL LRV 62



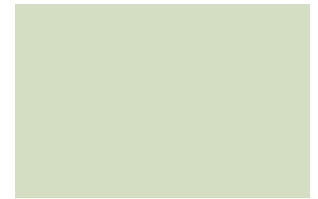
0234
HPL, SGL LRV 25



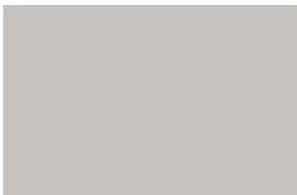
0273
HPL, SGL LRV 65



0509
HPL, SGL LRV 0.37



0517
HPL, SGL LRV 61



0527
HPL, SGL LRV 52



0561
HPL, SGL LRV 10



0571
HPL, SGL LRV 4



0593
HPL, SGL LRV 5



0594
HPL, SGL LRV 9



0605
HPL, SGL LRV 31



0606
HPL, SGL LRV 51



0607
HPL, SGL LRV 29



0619
HPL, SGL LV 13



0623
HPL, SGL LRV 8



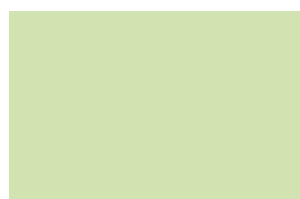
0641
HPL, SGL LRV 45



0644
HPL, SGL LRV 36



0647
HPL, SGL LRV 51



0660
HPL, SGL LRV 43



0682
HPL, SGL LRV 38



0711
HPL, SGL LRV 12

**KEY: HPL = HIGH PRESSURE LAMINATE. MFC = MELAMINE FACED CHIPBOARD. SGL = SOLID GRADE LAMINATE
LRV = LUMINESCENCE VALUE.**

COLOUR GUIDE

Arpa Athlon Woodgrains & Textures



1852
HPL, SGL LRV 38



4325
HPL, SGL LRV 24



4327
HPL, SGL LRV 61



4390
HPL, SGL LRV 20



4456
HPL, SGL LRV 4



4520
HPL, SGL LRV 37



4521
HPL, SGL LRV 53



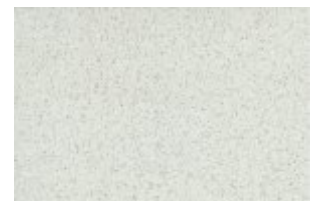
0997
HPL, SGL LRV 4



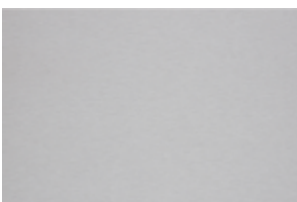
1017
HPL, SGL LRV 27



3192
HPL, SGL LRV 15



3194
HPL, SGL LRV 63



3283
HPL, SGL LRV 35



9131
HPL, SGL LRV 25



9133
HPL, SGL LRV 30



9134
HPL, SGL LRV 50

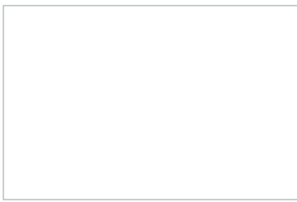


9135
HPL, SGL LRV 42

**KEY: HPL = HIGH PRESSURE LAMINATE. MFC = MELAMINE FACED CHIPBOARD. SGL = SOLID GRADE LAMINATE
LRV = LUMINESCENCE VALUE.**

COLOUR GUIDE

Formica SGL and HPL Ranges



F2255 - Polar White
HPL, SGL LRV 85.7



F5281 - Dogbone White
HPL, SGL



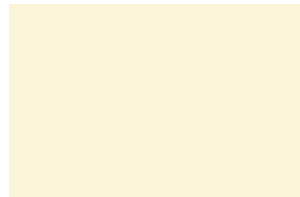
F1936 - Lava Dust
HPL, SGL LRV 60.8



F6305 - Limed Strand
HPL, SGL



F7517 - Almond Grafix
HPL, SGL LRV 62.8



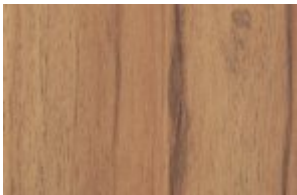
F2273 - Seringa
HPL, SGL LRV 69.8



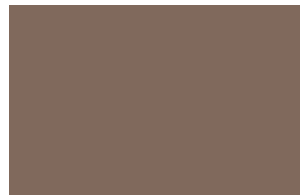
F5374 - Elegant Oak
HPL, SGL



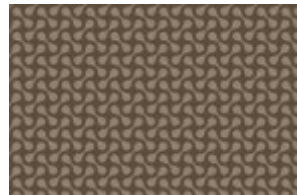
F2887 - Savoy Beech
HPL, SGL LRV 33.7



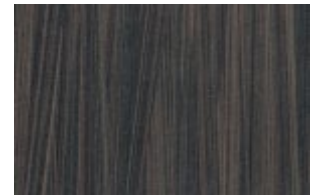
F5486 - Classic Walnut
HPL, SGL LRV 62.8



F5342 - Earth
HPL, SGL



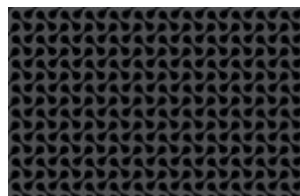
F5278 - Dogbone Earth
HPL, SGL



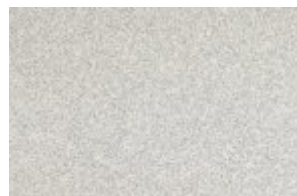
F6306 - Wenge Strand
HPL, SGL



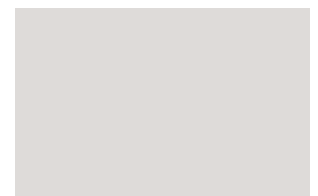
F7912 - Storm
HPL, SGL



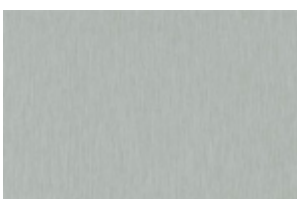
F5283 - Dogbone Storm
HPL, SGL



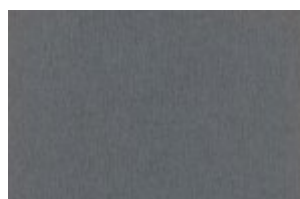
F7507 - Folkestone Grafix
HPL, SGL LRV 53.7



F 7927 - Folkestone
HPL, SGL LRV 53.4



K3737 - Xenon
HPL, SGL



K3734 - Radon
HPL, SGL



F1941 - Lilac Dust
HPL, SGL LRV 45.3



F2828 - Tropical Blue
HPL, SGL LRV 17.1



F7879 - Dusty Jade
HPL, SGL LRV 41.0



F7505 - Dusty Jade Grafix
HPL, SGL LRV 32.0



F1485 - Chrome Yellow
HPL, SGL LRV 64.6



F7845 - Spectrum Red
HPL, SGL LRV 15.4

KEY: HPL = HIGH PRESSURE LAMINATE. MFC = MELAMINE FACED CHIPBOARD. SGL = SOLID GRADE LAMINATE
LRV = LIGHT REFLECTANCE VALUE