

FORCE

Anti-Vandal Cubicles

Durability



LOW → HIGH



Moisture Resistance



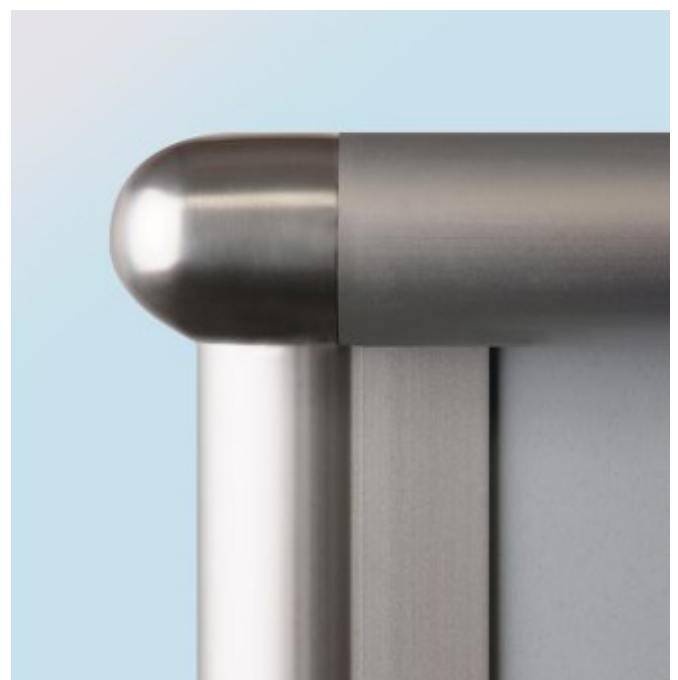
LOW → HIGH



Force - Anti-Vandal Cubicles

The Force Range is the perfect choice for very hard wearing situations where vandalism may be a problem. The Force range is supplied pre-drilled and part assembled allowing easy installation on site. The range includes a head rail that fixes to the wall for extra rigidity and with its sleek lines and contemporary design no fittings are visible from the exterior of the cubicle. This range is also available Powder Coated with a number of colour options.

Suitable for	Schools, Leisure Centres, Airports, Clubs / Pubs / Bars, Retail Outlets
Board	12.5mm Solid Grade Laminate
Edging	Black Core with bull-nosed edges
Fittings	Fully Satin Anodised Aluminium Frame
Usage	For use in high usage areas



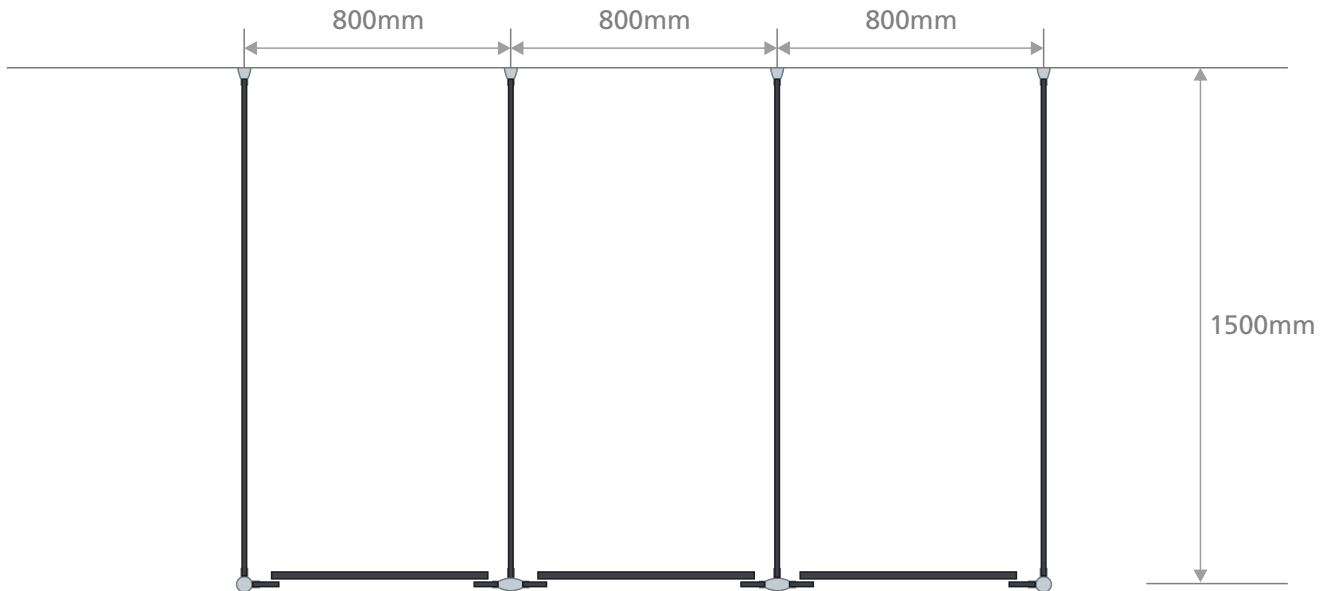
Satin Anodised Aluminium Frame

Images are for example purposes only. Some fixings may be visible from the outside on finished product.

FORCE

Standard Sizes

Tel: 0845 180 0656
Fax: 0161 790 9625
Email: sales@cubiclesanddoors.co.uk
www.cubiclesanddoors.co.uk



Plan



Front

Cubicles

Partitions: 1800mm high x 1500mm wide. Doors: 1800mm high x 630mm wide

Standard sizes shown are based on a cubicle size of 800mm wide x 1500mm deep x 1800mm high.

COLOUR GUIDE

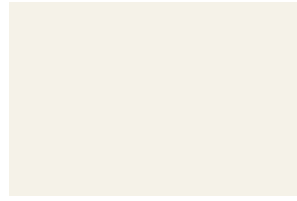
Polyrey SGL and HPL Ranges



A 036 - Amandine
HPL, SGL LV 0.58



A 057 - Aulne Naurel
HPL, SGL LV 0.43



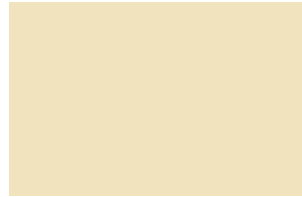
B 015 - Blanc Menuires
HPL, SGL LV 0.87



B 048 - Bleu Oslo
HPL, SGL LV 0.52



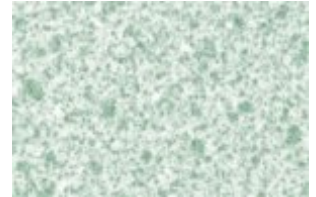
B 086 - Bleu Caraibes
HPL, SGL LV 0.10



C 017 - Coquille d'Oeuf
HPL, SGL LV 0.68



C 030 - Cosmic Beige
HPL, SGL LV 0.57



C 031 - Cosmic Vert
HPL, SGL LV 0.59



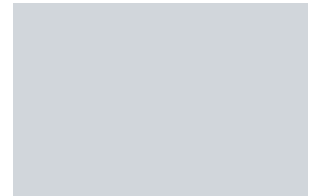
C 032 - Cosmic Rose
HPL, SGL LV 0.57



E 028 - Erable Nordique
HPL, SGL LV 0.51



G 003 - Gris Perle
HPL, SGL LV 0.41



G 029 - Gris Tourterelle
HPL, SGL LV 0.53



G 031 - Genet
HPL, SGL LV 0.58



M 001 - Maryland Clair
HPL, SGL LV 0.55



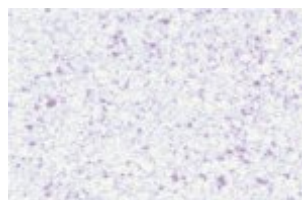
M 003 - Maryland Fonce
HPL, SGL LV 0.13



M 077 - Myriade Jaune
HPL, SGL LV 0.58



C 062 - Capucine
HPL, SGL LV 0.19



N 022 - Nova Lilas
HPL, SGL LV 0.54



N 023 - Nova Saphir
HPL, SGL LV 0.23



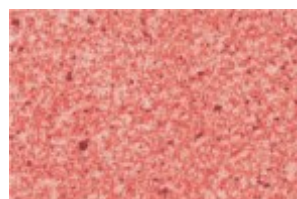
N 026 - Noyer Ombre
HPL, SGL LV 0.17



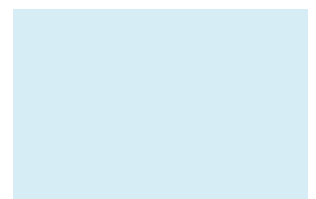
N 027 - Noyer Venitien
HPL, SGL LV 0.30



N 028 - Nova Mousse
HPL, SGL LV 0.33



N 049 - Nova Argile
HPL, SGL LV 0.31

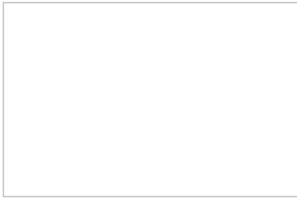


Y 023 - Heather Blue
HPL, SGL LV 0.77

**KEY: HPL = HIGH PRESSURE LAMINATE. MFC = MELAMINE FACED CHIPBOARD. SGL = SOLID GRADE LAMINATE
LV = LUMINESCENCE VALUE.**

COLOUR GUIDE

Formica SGL and HPL Ranges



F2255 - Polar White
HPL, SGL LRV 85.7



F5281 - Dogbone White
HPL, SGL



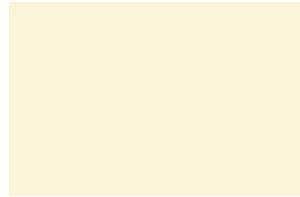
F1936 - Lava Dust
HPL, SGL LRV 60.8



F6305 - Limed Strand
HPL, SGL



F7517 - Almond Grafix
HPL, SGL LRV 62.8



F2273 - Seringa
HPL, SGL LRV 69.8



F5374 - Elegant Oak
HPL, SGL



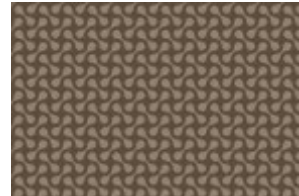
F2887 - Savoy Beech
HPL, SGL LRV 33.7



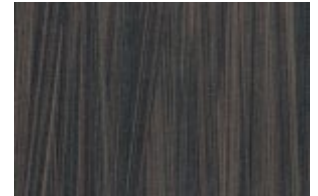
F5486 - Classic Walnut
HPL, SGL LRV 62.8



F5342 - Earth
HPL, SGL



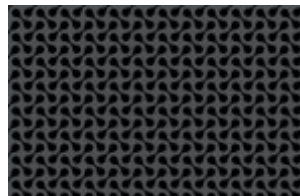
F5278 - Dogbone Earth
HPL, SGL



F6306 - Wenge Strand
HPL, SGL



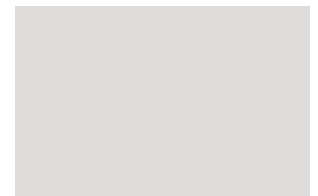
F7912 - Storm
HPL, SGL



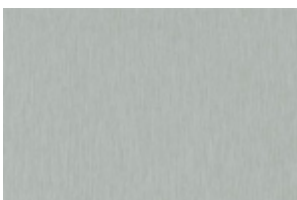
F5283 - Dogbone Storm
HPL, SGL



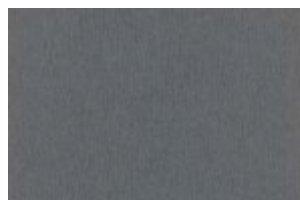
F7507 - Folkestone Grafix
HPL, SGL LRV 53.7



F 7927 - Folkestone
HPL, SGL LRV 53.4



K3737 - Xenon
HPL, SGL



K3734 - Radon
HPL, SGL



F1941 - Lilac Dust
HPL, SGL LRV 45.3



F2828 - Tropical Blue
HPL, SGL LRV 17.1



F7879 - Dusty Jade
HPL, SGL LRV 41.0



F7505 - Dusty Jade Grafix
HPL, SGL LRV 32.0



F1485 - Chrome Yellow
HPL, SGL LRV 64.6

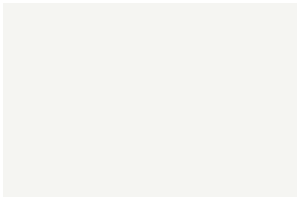


F7845 - Spectrum Red
HPL, SGL LRV 15.4

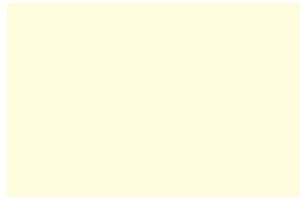
KEY: HPL = HIGH PRESSURE LAMINATE. MFC = MELAMINE FACED CHIPBOARD. SGL = SOLID GRADE LAMINATE
LRV = LIGHT REFLECTANCE VALUE

COLOUR GUIDE

Thermopal SGL and HPL Ranges



SR209 - Royal White
HPL, SGL LRV 81



U131 - Ivory
HPL, SGL LRV 78



U194 - Zinc Yellow
HPL, SGL LRV 65



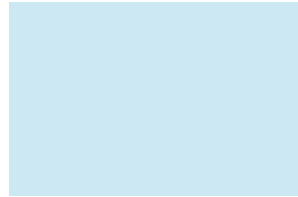
U032 - Orange
HPL, SGL LRV 34



U163 - Ruby
HPL, SGL LRV 46



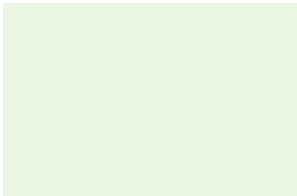
U055 - Chili
HPL, SGL LRV 14



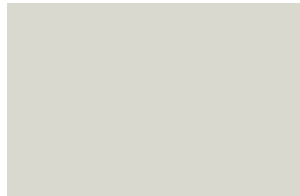
U067 - Pastel Blue
HPL, SGL LRV 71



U059 - Gentian Blue
HPL, SGL LRV 10



U186 - Pastel Green
HPL, SGL LRV 76



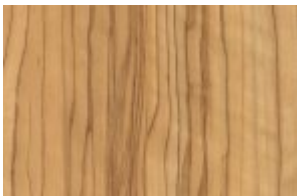
U036 - Mid Grey
HPL, SGL LRV 60



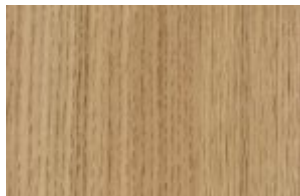
U007 - Graphite Black
HPL, SGL LRV 07



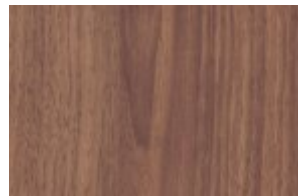
F04/020 - Planked Maple
HPL, SGL LRV 61



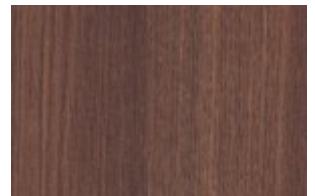
F21/005 - Spain Olive Light
HPL, SGL LRV 40



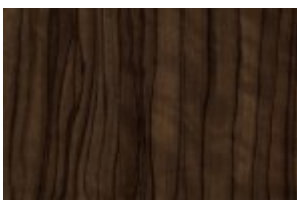
F06/159 - Striped Oak Milano
HPL, SGL LRV 40



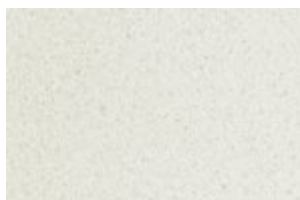
F26/031 - Albany Walnut
HPL, SGL LRV 16



F06/162 - Milano Oak Choco
HPL, SGL LRV 10



F27/007 - Spain Olive Dark
HPL, SGL LRV 11



Sahara 2
HPL, SGL LRV 45



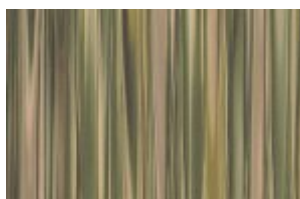
Gobi 2
HPL, SGL LRV 53



Gobi 3
HPL, SGL LRV 48



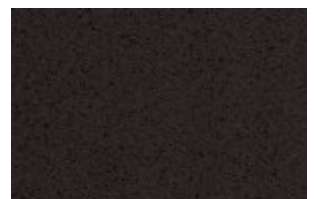
Mystic 1
HPL, SGL LRV 18



Mystic 2
HPL, SGL LRV 19



Mystic 3
HPL, SGL LRV 14



Sahara 5
HPL, SGL LRV 10

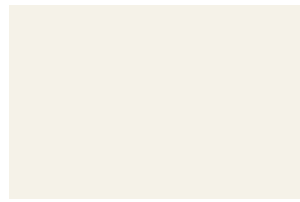
**KEY: HPL = HIGH PRESSURE LAMINATE. MFC = MELAMINE FACED CHIPBOARD. SGL = SOLID GRADE LAMINATE
LRV = LIGHT REFLECTANCE VALUE**

COLOUR GUIDE

Polyrey MFC Range



A 036 - Amandine
MFC LV 0.58



B 015 - Blanc Menuires
MFC LV 0.87



B 048 - Bleu Oslo
MFC LV 0.52



B 057 - Beton Naturel
MFC LV 0.48



B 086 - Bleu Caraibes
MFC LV 0.10



C 011 - Caviar
MFC LV 0.10



C 017 - Coquille d'Oeuf
MFC LV 0.68



C 030 - Cosmic Beige
MFC LV 0.57



C 031 - Cosmic Vert
MFC LV 0.59



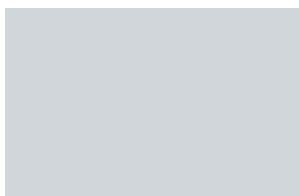
C 032 - Cosmic Rose
MFC LV 0.57



C 062 - Capucine
MFC LV 0.19



G 003 - Gris Perle
MFC LV 0.41



G 029 - Gris Tourterelle
MFC LV 0.53



G 031 - Genet
MFC LV 0.58



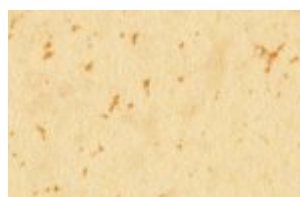
M 001 - Maryland Clair
MFC LV 0.55



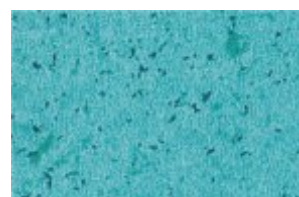
M 003 - Maryland Fonce
MFC LV 0.13



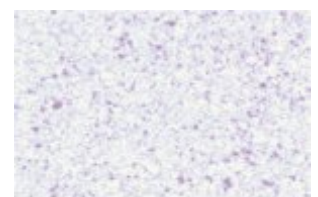
M 047 - Mousse
MFC LV 0.34



M 077 - Myriade Jaune
MFC LV 0.58



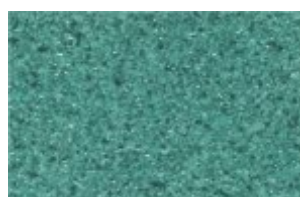
M 079 Myriad Vert
MFC LV 0.28



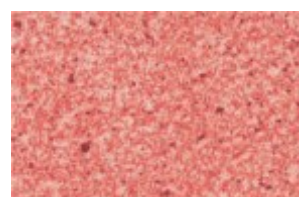
N 022 - Nova Lilas
MFC LV 0.54



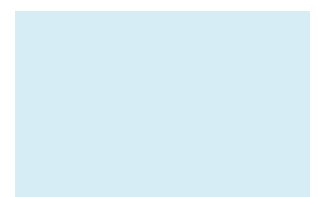
N 023 - Nova Saphir
MFC LV 0.23



N 028 - Nova Mousse
MFC LV 0.33



N 049 - Nova Argile
MFC LV 0.31

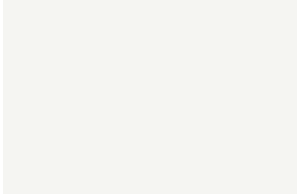


Y 023 - Heather Blue
MFC LV 0.77

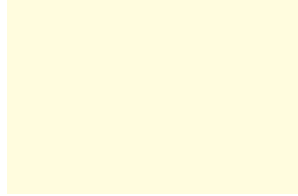
**KEY: HPL = HIGH PRESSURE LAMINATE. MFC = MELAMINE FACED CHIPBOARD. SGL = SOLID GRADE LAMINATE
LV = LUMINESCENCE VALUE.**

COLOUR GUIDE

Thermopal MFC Range



SR209 - Royal White
MFC LRV 81



U131 - Ivory
MFC LRV 78



U194 - Zinc Yellow
MFC LRV 65



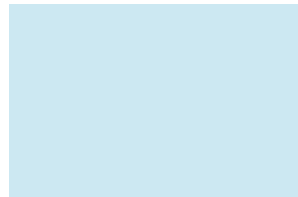
U032 - Orange
MFC LRV 34



U163 - Ruby
MFC LRV 46



U055 - Chili
MFC LRV 14



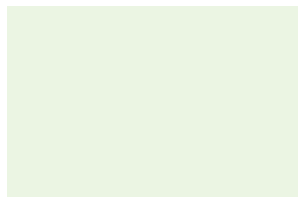
U067 - Pastel Blue
MFC LRV 71



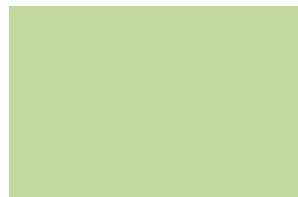
U283 - Dark Pastel Blue
MFC LRV 35



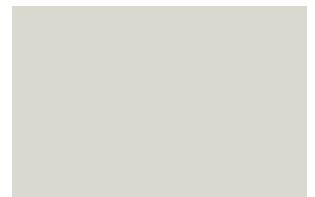
U059 - Gentian Blue
MFC LRV 10



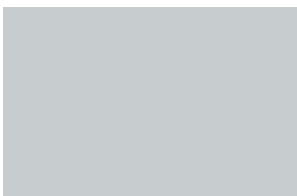
U186 - Pastel Green
MFC LRV 76



U046 - Sage
MFC LRV 60



U036 - Mid Grey
MFC LRV 60



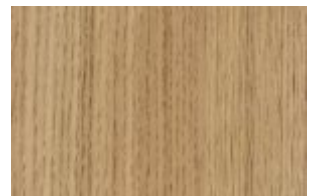
U009 - Silver Grey
MFC LRV 47



F04/020 - Planked Maple
MFC LRV 61



F37/010 - Bloomed Beech
MFC LRV 34



F06/159 - Striped Oak Milano
MFC LRV 40



Sahara 2
MFC LRV 45



Gobi 2
MFC LRV 53



Gobi 3
MFC LRV 48



Sahara 5
MFC LRV 10

**KEY: HPL = HIGH PRESSURE LAMINATE. MFC = MELAMINE FACED CHIPBOARD. SGL = SOLID GRADE LAMINATE
LRV = LIGHT REFLECTANCE VALUE**