

# COMMANDER

## Aluminium Fittings

Durability



LOW → HIGH



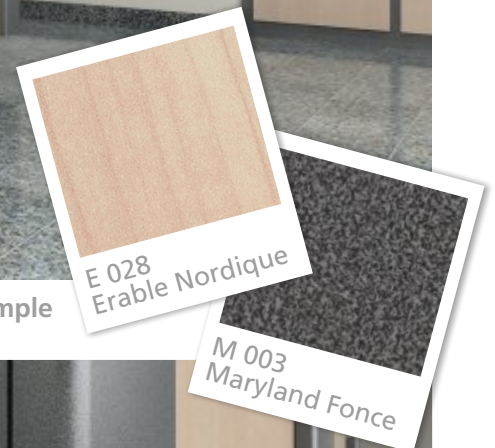
Moisture Resistance



LOW → HIGH



Finishes Used in this Example



With its eye catching 38mm postformed pilasters and excellent choice of colours the Commander Range gives impressive looks as soon as you walk into a washroom. This range is our most durable and hardwearing option available for dry areas manufactured from HPL.

- |                     |   |
|---------------------|---|
| <b>Suitable for</b> | Schools, Retail Outlets, Airports, Restaurants, Offices                 |
| <b>Board</b>        | 18/38mm M.R Chipboard/MDF Core Laminated 2 Sides with HPL               |
| <b>Edging</b>       | 2mm ABS and Postformed Pilasters for extra durability                   |
| <b>Fittings</b>     | Satin Anodised Aluminium (optional upgrade to Polished Stainless Steel) |
| <b>Usage</b>        | For use in dry, high use areas  |



Close Up Shot

# COMMANDER

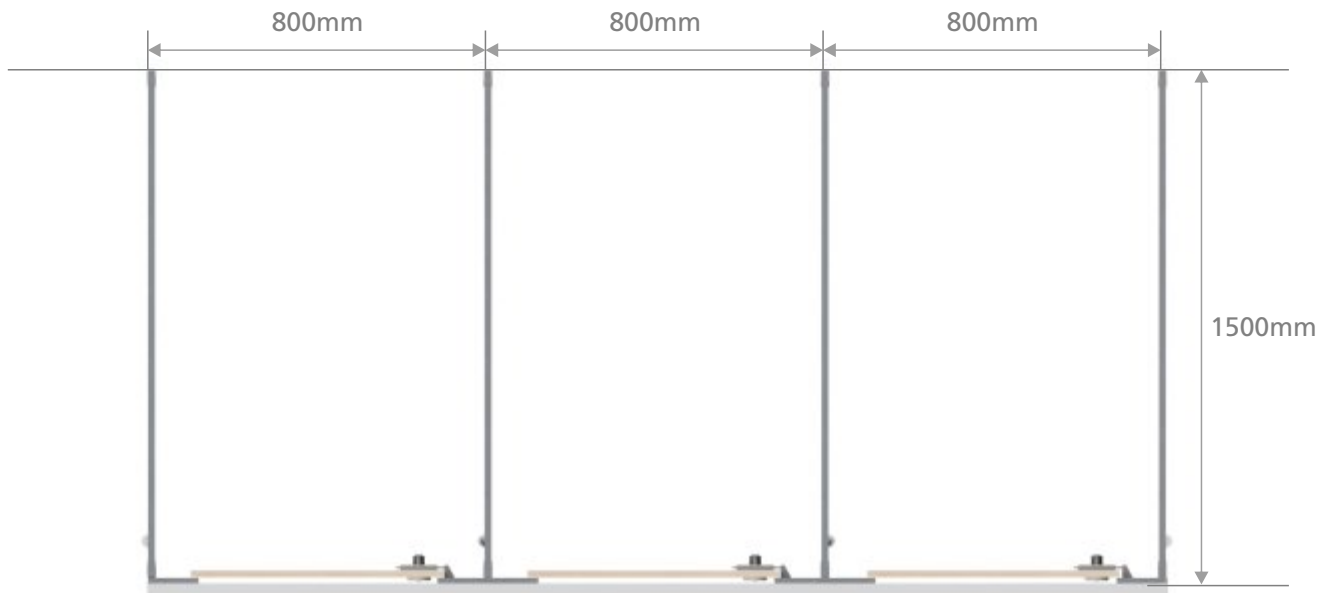
## Standard Sizes

Tel: 0845 180 0656

Fax: 0161 790 9625

Email: [sales@cubiclesanddoors.co.uk](mailto:sales@cubiclesanddoors.co.uk)

[www.cubiclesanddoors.co.uk](http://www.cubiclesanddoors.co.uk)



Plan



Front

### Cubicles

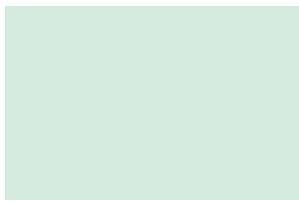
End Pilasters: 1800mm high x 100mm wide. Mid Pilasters: 1800mm high x 200mm wide

Partitions: 1800mm high x 1500mm wide. Doors: 1800mm high x 650mm wide

**Standard sizes shown are based on a cubicle size of 800mm wide x 1500mm deep x 1800mm high.**

# COLOUR GUIDE

## Polyrey SGL and HPL Ranges



A 014 - Aigue Marine  
HPL, SGL LV 0.69



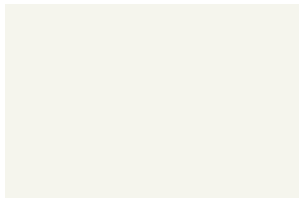
A 036 - Amandine  
HPL, SGL LV 0.57



B 001 - Bleu Flash  
HPL, SGL LV 0.13



B 012 - Blanc Antique  
HPL, SGL LV 0.85



B 015 - Blanc Menuires  
HPL, SGL LV 0.83



B048 - Bleu Oslo  
HPL, SGL LV 0.51



B 070 - Blanc Megeve  
HPL, SGL LV 0.85



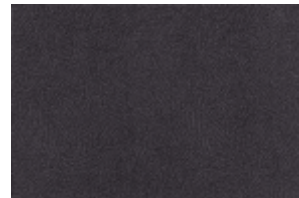
B 086 - Bleu Carabes  
HPL, SGL LV 0.09



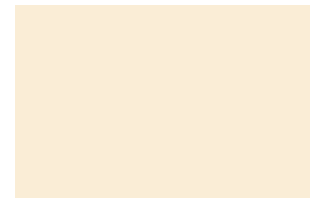
B100 Banian Blanchi  
HPL, SGL LV 0.40



B101 Banian Noirci  
HPL, SGL LV 0.10



C011 - Caviar  
HPL, SGL LV 0.10



C017 - Coquille d'Oeuf  
HPL, SGL LV 0.70



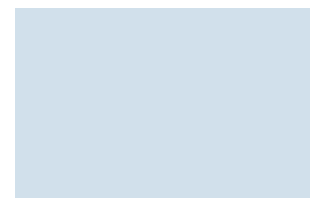
C018 - Chardon  
HPL, SGL LV 0.19



C062 - Capucine  
HPL, SGL LV 0.16



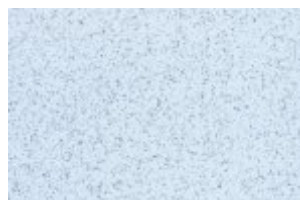
E028 - Erable Nordique  
HPL, SGL LV 0.58



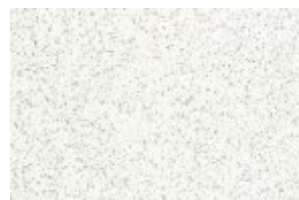
F008 Fumee  
HPL, SGL LV 0.66



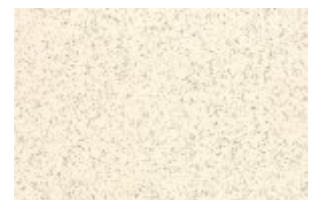
G003 - Gris Perle  
HPL, SGL LV 0.37



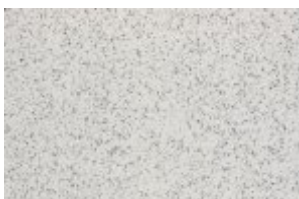
G014 - Galeo Bleu Oslo  
HPL, SGL LV 0.51



G023 - Galeo Blanc Megeve  
HPL, SGL LV 0.72



G025 - Galeo Coquille d'Oeuff  
HPL, SGL LV 0.69



G026 - Galeo Gris Perle  
HPL, SGL LV 0.37



G027 - Galeo Gris Tourtelle  
HPL, SGL LV 0.55



G029 - Gris Tourtelle  
HPL, SGL LV 0.55



G031 Genet  
HPL, SGL LV 0.59

**KEY: HPL = HIGH PRESSURE LAMINATE. MFC = MELAMINE FACED CHIPBOARD. SGL = SOLID GRADE LAMINATE  
LV = LUMINESCENCE VALUE.**

# COLOUR GUIDE

## Polyrey SGL and HPL Ranges



G032 Galeo Rose Tendre  
HPL, SGL LV 0.58



G034 Galeo Rose Bougain  
HPL, SGL LV 0.18



H025 Pommier de Honfleur  
HPL, SGL LV 0.45



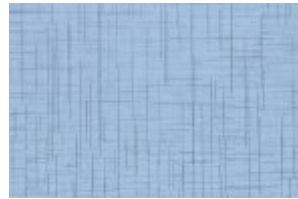
L016 Luna Beige  
HPL, SGL LV 0.64



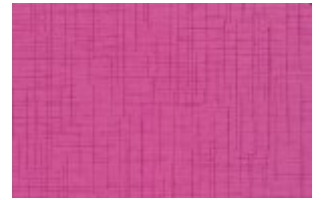
L017 Luna Rose  
HPL, SGL LV 0.59



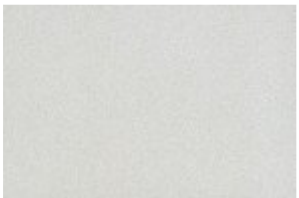
L018 - Luna Vert  
HPL, SGL LV 0.60



L033 - Linea Bleu Oslo  
HPL, SGL LV 0.43



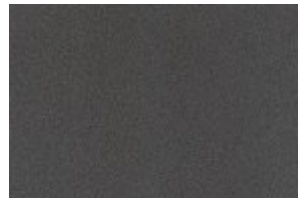
L034 - Linea Rose Bougain  
HPL, SGL LV 0.18



M001 Maryland Clair  
HPL, SGL LV 0.56



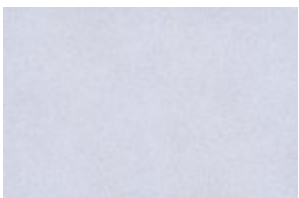
M002 - Maryland Moyen  
HPL, SGL LV 0.29



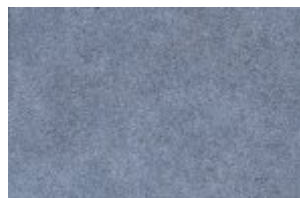
M003 - Maryland Fonce  
HPL, SGL LV 0.14



M047 - Mousse  
HPL, SGL LV 0.35



N022 - Nova Lilas  
HPL, SGL LV 0.51



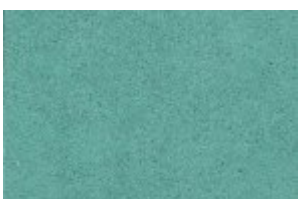
N023 - Nova Saphir  
HPL, SGL LV 0.24



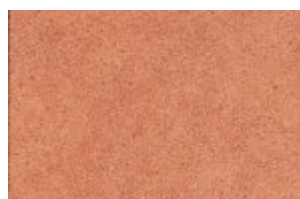
N026 - Noyer Ombre  
HPL, SGL LV 0.16



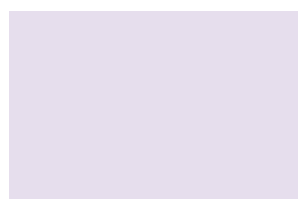
N027 - Noyer Venitien  
HPL, SGL LV 0.27



N028 - Nova Mousse  
HPL, SGL LV 0.35



N049 - Nova Argile  
HPL, SGL LV 0.29



R021 - Rose Tendre  
HPL, SGL LV 0.55



R036 - Rouge Cerise  
HPL, SGL LV 0.11



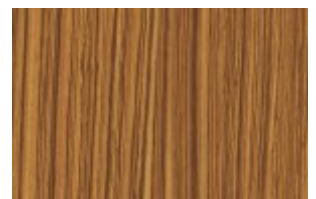
S018 - Schiste  
HPL, SGL LV 0.11



V011 - Vert d'Eau  
HPL, SGL LV 0.69



Y022 - Rose Bougainville  
HPL, SGL LV 0.18



Z009 - Zebrano Ambre  
HPL, SGL LV 0.15

**KEY: HPL = HIGH PRESSURE LAMINATE. MFC = MELAMINE FACED CHIPBOARD. SGL = SOLID GRADE LAMINATE  
LV = LUMINESCENCE VALUE.**

# COLOUR GUIDE

## Arpa Athlon Plain Colours



001  
HPL, SGL LRV 82



0204  
HPL, SGL LRV 82



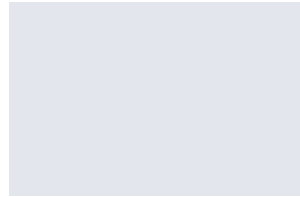
0211  
HPL, SGL LRV 43



0218  
HPL, SGL LRV 62



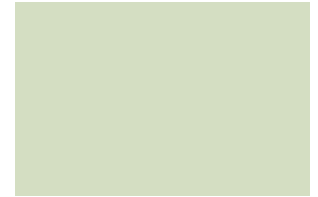
0234  
HPL, SGL LRV 25



0273  
HPL, SGL LRV 65



0509  
HPL, SGL LRV 0.37



0517  
HPL, SGL LRV 61



0527  
HPL, SGL LRV 52



0561  
HPL, SGL LRV 10



0571  
HPL, SGL LRV 4



0593  
HPL, SGL LRV 5



0594  
HPL, SGL LRV 9



0605  
HPL, SGL LRV 31



0606  
HPL, SGL LRV 51



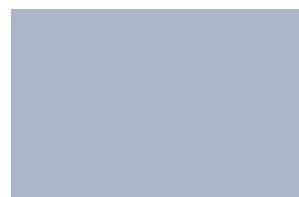
0607  
HPL, SGL LRV 29



0619  
HPL, SGL LV 13



0623  
HPL, SGL LRV 8



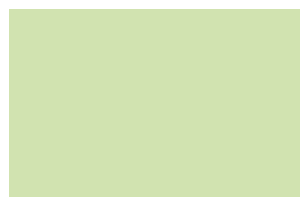
0641  
HPL, SGL LRV 45



0644  
HPL, SGL LRV 36



0647  
HPL, SGL LRV 51



0660  
HPL, SGL LRV 43



0682  
HPL, SGL LRV 38



0711  
HPL, SGL LRV 12

**KEY: HPL = HIGH PRESSURE LAMINATE. MFC = MELAMINE FACED CHIPBOARD. SGL = SOLID GRADE LAMINATE  
LRV = LUMINESCENCE VALUE.**

# COLOUR GUIDE

Arpa Athlon Woodgrains & Textures



1852  
HPL, SGL LRV 38



4325  
HPL, SGL LRV 24



4327  
HPL, SGL LRV 61



4390  
HPL, SGL LRV 20



4456  
HPL, SGL LRV 4



4520  
HPL, SGL LRV 37



4521  
HPL, SGL LRV 53



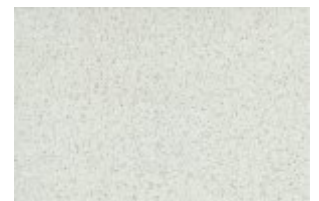
0997  
HPL, SGL LRV 4



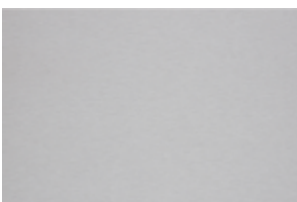
1017  
HPL, SGL LRV 27



3192  
HPL, SGL LRV 15



3194  
HPL, SGL LRV 63



3283  
HPL, SGL LRV 35



9131  
HPL, SGL LRV 25



9133  
HPL, SGL LRV 30



9134  
HPL, SGL LRV 50

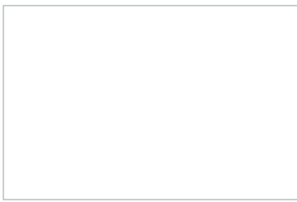


9135  
HPL, SGL LRV 42

**KEY: HPL = HIGH PRESSURE LAMINATE. MFC = MELAMINE FACED CHIPBOARD. SGL = SOLID GRADE LAMINATE  
LRV = LUMINESCENCE VALUE.**

# COLOUR GUIDE

Formica SGL and HPL Ranges



F2255 - Polar White  
HPL, SGL LRV 85.7



F5281 - Dogbone White  
HPL, SGL



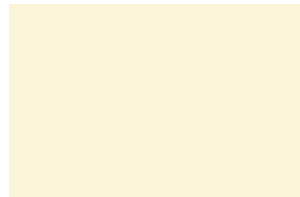
F1936 - Lava Dust  
HPL, SGL LRV 60.8



F6305 - Limed Strand  
HPL, SGL



F7517 - Almond Grafix  
HPL, SGL LRV 62.8



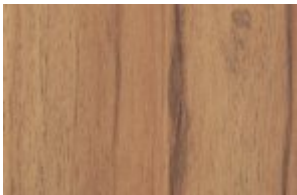
F2273 - Seringa  
HPL, SGL LRV 69.8



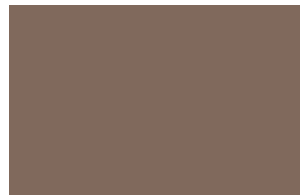
F5374 - Elegant Oak  
HPL, SGL



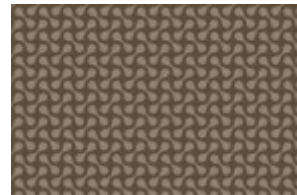
F2887 - Savoy Beech  
HPL, SGL LRV 33.7



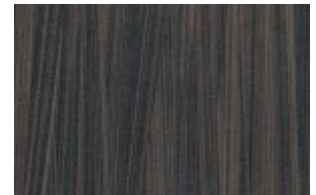
F5486 - Classic Walnut  
HPL, SGL LRV 62.8



F5342 - Earth  
HPL, SGL



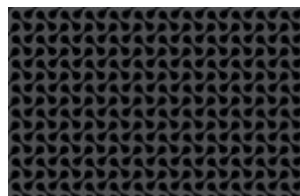
F5278 - Dogbone Earth  
HPL, SGL



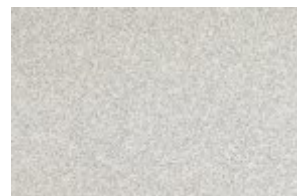
F6306 - Wenge Strand  
HPL, SGL



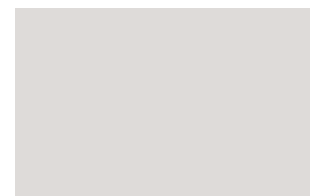
F7912 - Storm  
HPL, SGL



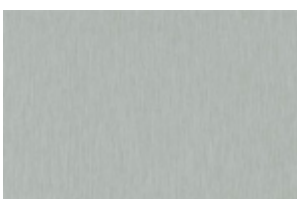
F5283 - Dogbone Storm  
HPL, SGL



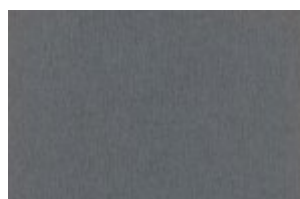
F7507 - Folkestone Grafix  
HPL, SGL LRV 53.7



F 7927 - Folkestone  
HPL, SGL LRV 53.4



K3737 - Xenon  
HPL, SGL



K3734 - Radon  
HPL, SGL



F1941 - Lilac Dust  
HPL, SGL LRV 45.3



F2828 - Tropical Blue  
HPL, SGL LRV 17.1



F7879 - Dusty Jade  
HPL, SGL LRV 41.0



F7505 - Dusty Jade Grafix  
HPL, SGL LRV 32.0



F1485 - Chrome Yellow  
HPL, SGL LRV 64.6



F7845 - Spectrum Red  
HPL, SGL LRV 15.4

**KEY: HPL = HIGH PRESSURE LAMINATE. MFC = MELAMINE FACED CHIPBOARD. SGL = SOLID GRADE LAMINATE**  
**LRV = LIGHT REFLECTANCE VALUE**