

Solo water control system

Operation and care guide

This operation and care guide
must be left with the user.



crosswater^x
digital

DIGITAL WATER CONTROL AT YOUR FINGERTIPS

Important Safety Information

Please read these instructions carefully before using this system and keep in a safe place for future reference.

To reduce the risk of electric shock and injury, basic safety precautions, including the following, should always be followed when using electrical appliances.

Children **MUST** be supervised at all times when using this shower control. Training should be given to children and vulnerable individuals before permitting them to operate the control.

Do not pull on the power cable: this may damage it and cause electric shock.

Never operate any appliance with a damaged cable or plug. Do not use an appliance that has been dropped or damaged or after any malfunctions.

WARNING

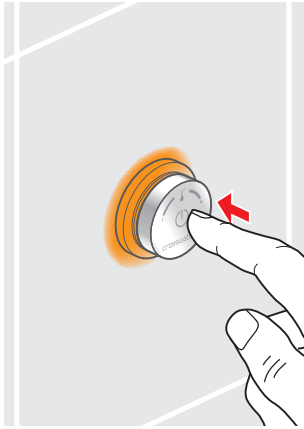
CONTINUOUSLY TURNING THE CONTROL WHEEL IN THE CLOCKWISE DIRECTION MAY OVERRIDE THE PRE-SET MAXIMUM TEMPERATURE, WITH CONSEQUENT RISK OF SCALDING.

ALWAYS TAKE CARE WHEN OPERATING THE CONTROL WHEEL, AND DO NOT LEAVE CHILDREN UNATTENDED WHILST THE PRODUCT IS IN OPERATION.

Contents

Activation set up		5 - 6
Important: Once powered up, the control must be programmed within one hour, this will set the maximum temperatures, maximum run time, hygiene intervals and ambient light.		
Operating the Solo water control system	2	Self check mode 3
To turn ON / OFF	2	Cleaning (safe) mode 4
Setting the temperature	2	Thermal disinfection 4
Setting the memory	3	Cleaning / maintenance 7
		Servicing / contact information 7

Operating the Solo water control system



To turn ON

Press the control once, the control will illuminate Orange and water will start to flow.

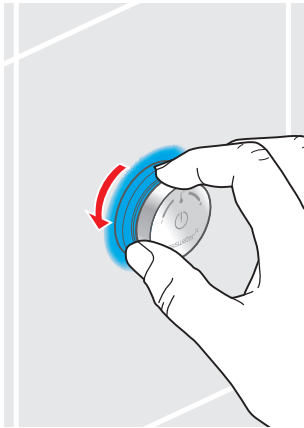
To turn OFF

Press the control once, the water and light will turn off.

To access a stored memory (once memory has been set); press the control once to select memory 1, twice for memory 2 and three times for memory 3.

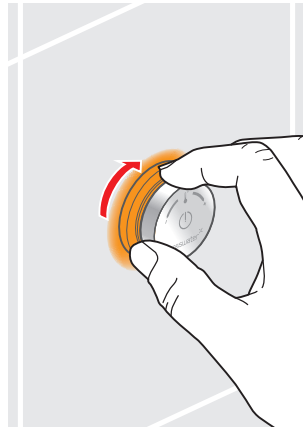
Setting the temperature

⚠ Important note: Risk of scalding, please read the Safety Information on page 1 before using.



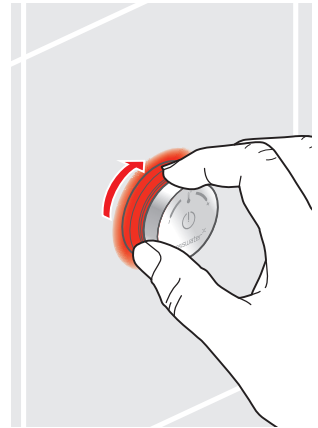
Cold

Turn the control anti-clockwise, the control will illuminate Blue and will flash until the set temperature is reached.



Warm

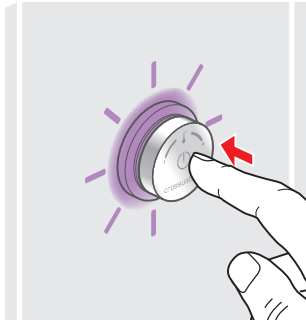
Turn the control until the control illuminates Orange, the light will flash until the set temperature is reached.



Hot

Turn the control clockwise, the control will illuminate Red, the light will flash until the set temperature is reached.

Setting the memory



Up to three memory settings can be stored.

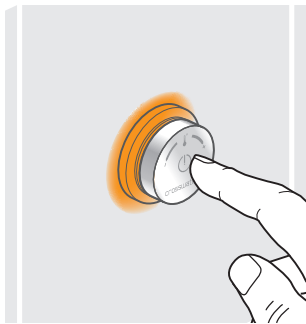
- 1 Press the control once.
- 2 Set the desired temperature.
- 3 Hold down the control until the control flashes Purple twice to confirm memory setting, then release.
- 4 The shower temperature is now stored.

To set memory 1, press the control once when turning on, press twice to set memory 2 and three times to set memory 3.

To access a stored memory; press the control once to select memory 1, twice for memory 2 and three times for memory 3.

Note: The maximum temperature for memory settings is 40 degrees.

Self check mode



Press and hold the control until the Orange light appears, then release, the system will then run through a series of diagnostic checks.

The system checks:

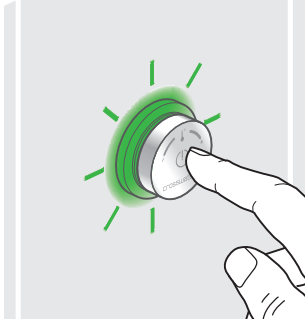
- 1 Adjustment of the valves.
- 2 Red lights up - the valve goes hot.
- 3 Green lights up - the valves go off.
- 4 Blue lights up - the valve goes cold.
- 5 The valves are closed.

Once the check is complete you will see:

2 x flashes - the control unit is OK.

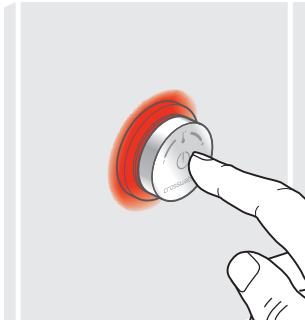
3 x flashes - malfunction of the temperature sensor. Please contact customer services.

Cleaning (safe) mode



Press the control until the Green light appears, then release, this will disable the control for 45 seconds to allow the control to be cleaned without turning on the control.

Thermal disinfection



The pipes will flush through at the hottest temperature your system will allow, this will clean through any limescale and clear any potential bacteria.

Note: Care should be taken through this thermal disinfection process as the pipes will get extremely hot and there is a risk of scalding.

Press the control and keep pressing until the Red light comes on, then release.

⚠ Caution: The water is hot during this process and there is a risk of scalding.

The control will flash Red during thermal disinfection and will last for 5 minutes, afterwards cold water is flushed through the system.

Thermal disinfection can be stopped at any time by pressing the control.

Extra functions explained

Maximum run time

This feature allows you to switch the unit off from 5 seconds to 30 minutes.

Hygiene function

This feature is used for setting up the shower to turn on and regularly flushing the system through. Please see the chart on the next page.

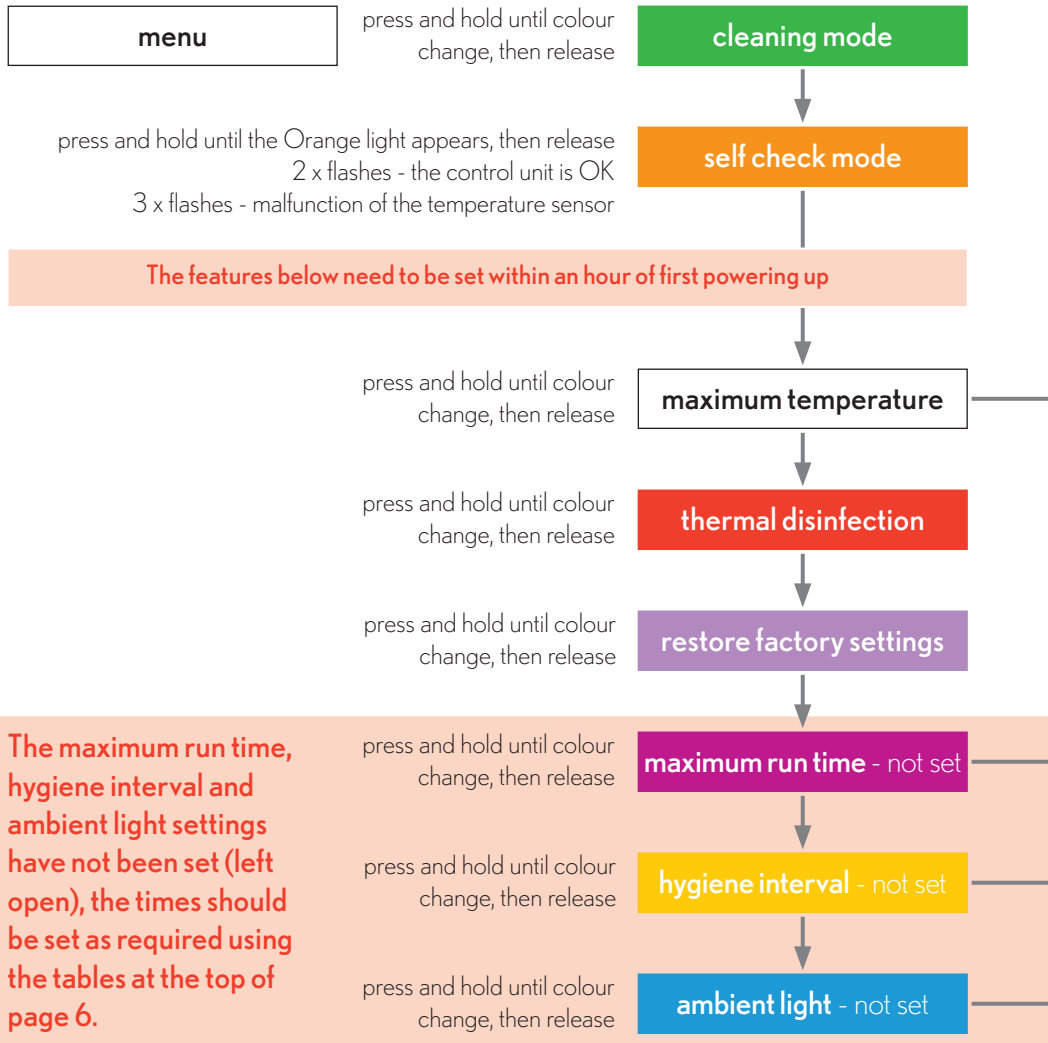
Ambient light

This feature allows you to have an ambient light on the controller when it's not in use and you can choose your desired light or even have a mixture of different lights.

Activation set up

Important: Once powered up, the control must be programmed within one hour, this will set the maximum temperatures, maximum run time, hygiene intervals and ambient light.

Note: If the activation set up is not completed within one hour, power off the unit and start again.



Maximum run time

Number of blinks	Value
1	5 seconds
2	8 seconds
3	10 seconds
4	15 seconds
5	20 seconds
6	30 seconds
7	45 seconds
8	1 minute
9	5 minutes
10	15 minutes
11	30 minutes
12	Open

Hygiene interval

Number of blinks	Value
1	1 Day
2	2 Days
3	3 Days
4	7 Days
5	Inactive

Ambient light

Control colour	Adjustment
	Light inactive
Cyan	Light cyan
Blue	Light blue
Magenta	Light magenta
Red	Light red
Orange	Light orange
Yellow	Light yellow
Green	Light green
White	Light white
Fast ambient light	Light rainbow

→ turn to select temperature

→ press to select max. temperature

→ blink

→ press to select max. time

→ blink

→ press to select hygiene interval

→ blink

→ press to select ambient light colour

Cleaning / maintenance

Only clean the control with soapy water, do not use abrasive cleaners as these could damage the brass which would not be covered under any warranty.

Please do not open the processor unit as this will invalidate your warranty.

Servicing / contact info

In the unlikely event that you are experiencing difficulties with your new Crosswater Digital product, please contact the Crosswater Technical Advice team on:

0845 8738843 or via e-mail - Technical@crosswater.co.uk

Website: crosswaterdigital.co.uk