

F54 Class 100

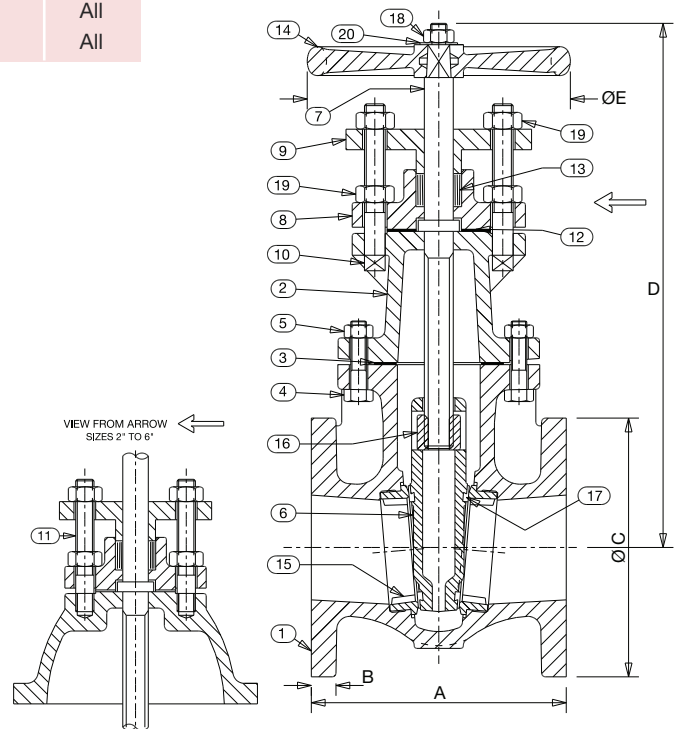
Materials

NO.	PART	MATERIAL	SIZE
1	Body	Cast Iron BS EN 1561 GJL-250	All
2	Bonnet	Cast Iron BS EN 1561 GJL-250	All
3	Bonnet Gasket	Asbestos Free	All
4	Bonnet Bolts	Steel BS4190 Gr.8.8	All
5	Bonnet Nuts	Steel BS4190 Gr.8.0	All
6	Disc	Cast Iron BS EN 1561 GJL-250	All
7	Stem	Steel SUS410	All
8	Stuffing Box	Cast Iron BS EN 1561 GJL-250	All
9	Gland	Cast Iron BS EN 1561 GJL-250	All
10	Gland Bolts	Steel BS 4190 Gr.8.8	8 - 12
11	Gland Studs	Steel BS 4439 Gr.8.8	2 - 6
12	Stuffing Box Gasket	Asbestos Free	All
13	Packing	Asbestos Free	All
14	Handwheel	Ductile Iron BS EN 1563 GJS-450-10	All
15	Body Seat Ring	Cast Iron BS EN 1561 GJL-250	All
16	Disc Stem Nut	Ductile Iron BS EN 1563 GJS-450-10	All
17	Disc Ring	Cast Iron BS EN 1561 GJL-250	All
18	Handwheel Nut	Steel BS4190 Gr.8.0	All
19	Gland Stud/Bolt Nuts	Steel BS4190 Gr.8.0	All
20	Handwheel Washer	Steel BS 4320	All



F54

Dimensional Drawing



Dimensions & Weights

SIZE (inch)	WEIGHT (lbs)	A (mm)	B (mm)	ØC (mm)	D (mm)	ØE (mm)
2	30.0	5.75	0.75	6.0	11.1	5.5
2½	35.1	6.25	0.75	6.5	11.9	5.5
3	44.1	6.5	0.75	7.25	13.5	6.0
4	60.0	6.75	0.88	8.5	14.8	8.0
5	86.0	7.5	0.88	10.0	17.2	9.0
6	98.1	8.25	0.88	11.0	18.8	9.0
8	178.0	9.5	1.0	13.25	24.0	12.0
10	271.0	10.75	1.0	16.0	28.9	14.0
12	384.0	12.0	1.0	18.0	33.3	16.0

SIZE (mm)	WEIGHT (kg)	A (mm)	B (mm)	ØC (mm)	D (mm)	ØE (mm)
50	13.6	146.1	19.1	152.0	281.6	139.7
65	15.9	158.8	19.1	165.1	301.7	139.7
80	20.0	165.1	19.1	184.0	343.0	152.4
100	27.2	171.5	22.2	215.9	374.7	203.2
125	39.0	190.5	22.2	254.0	436.8	228.6
150	44.5	209.6	22.2	279.4	478.2	228.6
200	81.6	241.3	25.4	337.0	609.1	304.8
250	122.9	273.1	25.4	406.0	732.9	355.6
300	174.2	304.8	28.6	457.2	844.6	406.4

PRESSURE RATING: Class 100

TEMPERATURE OPERATING RANGE: -10 to 170°C

UK END CONNECTION: BS10 Table D or E

OPERATING INSTRUCTIONS: Handwheel.

Gate valves are best for services that require infrequent valve operation, and where the disc is kept either fully opened or fully closed. They are not practical for throttling.

SPECIFICATION: End flanges conform to BS 10 Table D or E with flat face and are normally supplied drilled. Orders must specify whether Table D or Table E flanges are required. Wedge disc, non-rising stem, inside screw, all iron. Each valve is hydrostatically tested to BS 6755 Pt 1.

This valve is not suitable for use on group 1 gases or unstable fluids, as defined by the Pressure Equipment Directive 97/23/EC.

AVAILABLE OPTIONS: P150 Locking Device

Every effort has been made to ensure that the information contained in this publication is accurate at the time of publishing. Crane Ltd assumes no responsibility or liability for typographical errors or omissions or for any misinterpretation of the information within the publication and reserves the right to change without notice.