

D191 PN25

D191 Threaded DZR Ball Valve for Gas Applications

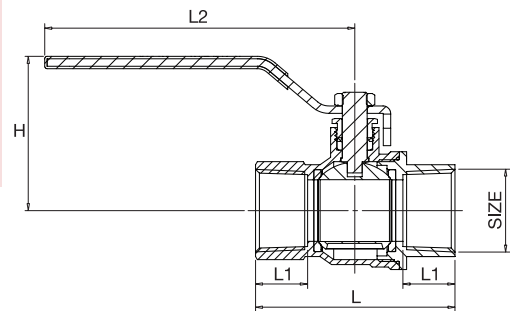
Designed to be light, compact and easy to install and operate, Crane's next generation DZR ball valve features improved leak resistance and reduced risk of damage from over tightening. The D191 is tested by BSI and complies with essential requirements of BS EN 331:1998

Materials

PART	MATERIAL	QUANTITY
Hex-Nut	Dacromet Plated Steel	1
Handle Sleeve	PVC Yellow	1
Handle	Dacromet Plated Steel	1
Packing Nut	Brass CW617N	1
Packing Gland	PTFE	1
Body	DZR Brass CW602N	1
Ball	DZR Brass CW602N	1
Seats	PTFE	2
O-Ring	NBR with BS EN 549 Approval	1
Bonnet	DZR Brass CW602N	1
Stem	DZR Brass CW602N	1



Dimensional Drawing



All dimensions are nominal.

Dimensions & Weights

SIZE (inch)	WEIGHT (g)	L (mm)	L1 (mm)	L2 (mm)	H (mm)
1/4	152	46	12	89	41
3/8	136	46	12	89	41
1/2	205	59	15.5	98.5	48
3/4	302	67	17	98.5	51
1	511	80.5	21	125	63
1 1/4	890	94	23	140	78
1 1/2	1292	102	23	140	83.5
2	2238	124	26.5	165	97.5

Pressure/Temperature Ratings

Non Gas Application

TEMPERATURE (°C)	-10 to 100	110
PRESSURE (BAR)	25	23.5

Gas Application

TEMPERATURE (°C)	-20 to 60
PRESSURE (BAR)	5

Intermediate pressure ratings shall be determined by interpolation.

Gas approved to BS EN 331:1998

PRESSURE RATING: PN25

TEMPERATURE OPERATING RANGE:

Non Gas -10 to 110°C, Gas -20 to 60°C

UK END CONNECTION: Taper threaded to BS EN 10226-2 (ISO 7-1) formerly BS 21

US END CONNECTION: ANSI B1.20.1:1983 (please add suffix AT to denote American Thread)

OPERATOR: Lever

SPECIFICATION: Quarter Turn, PTFE Seats and Stem Seal.

Tested by BSI and complies with the essential requirements of BS EN 331:1998.