

# D161 PN25

## Bronze Gate Valve

Crane gate valves offer the ultimate in dependable service wherever minimum pressure drop is important.

### Materials

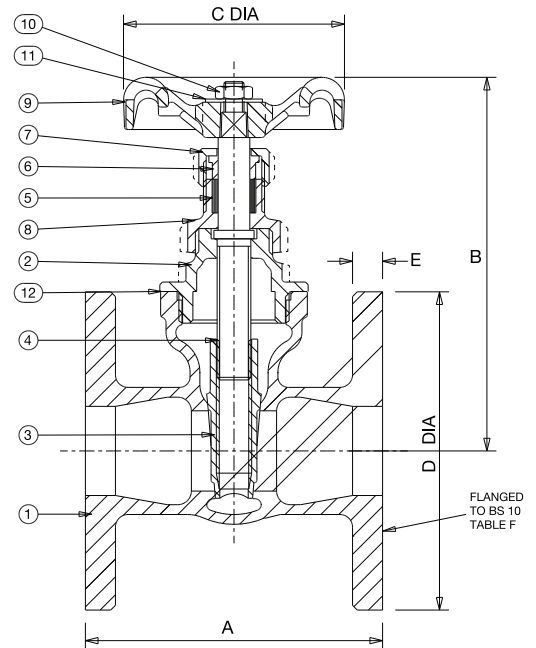
NO.	PART	MATERIAL	SIZE
1	Body	Bronze BS EN 1982 CC491K	-
2	Bonnet	Bronze BS EN 1982 CC491K	-
3	Disc	Bronze BS EN 1982 CC491K	-
4	Stem	Bronze BS EN 12164 CW602N	-
5	Packing	Asbestos Free	-
6	Gland	Brass BS EN 12164 CW614N	-
7	Packing Nut	Brass BS EN 12164 CW614N	-
8	Stuffing Box	Bronze BS EN 12164 CW602N	-
9	Handwheel	Aluminium	-
10	Handwheel Nut	Brass BS EN 12164 CW614N	-
11	Identity Plate	Aluminium	-
12	Gasket*	Asbestos Free	3" only



D161

General Valves

### Dimensional Drawing



### Dimensions & Weights

SIZE (inch)	WEIGHT (kg)	A (mm)	B (mm)	C (mm)	D (mm)	E (mm)
3/4	2.23	83	107	52	102	7.9
1	2.97	95	124	65	121	9.5
1 1/4	3.54	108	145	70	133	9.5
1 1/2	4.65	121	165	78	140	11.1
2	6.44	133	189	92	165	11.1
2 1/2	10.4	152	232	103	184	12.7
3	13.6	171	269	121	203	14.3

**PRESSURE RATING:** PN25

**TEMPERATURE OPERATING RANGE:** -10 to 100°C

**END CONNECTION:** Flanged to BS 10 Table F

**SPECIFICATION:** End flanges conform to BS 10 Table F with flat faces and are normally supplied drilled.

Every effort has been made to ensure that the information contained in this publication is accurate at the time of publishing. Crane Ltd assumes no responsibility or liability for typographical errors or omissions or for any misinterpretation of the information within the publication and reserves the right to change without notice.