

# D142

## PN32

### Bronze Swing Check Valve

Check valves permit flow in one direction only, and close automatically if flow reverses. They are entirely automatic in action, depending upon pressure and velocity of flow within the line to perform their functions of opening and closing.

The Crane D142 bronze check valve is of the swing variety.

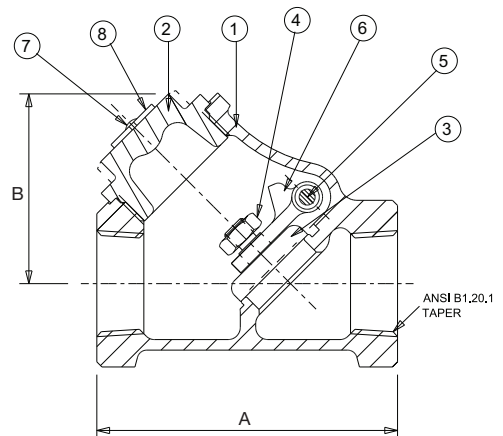
### Materials

PART	MATERIAL	SIZES
Body	Bronze BS EN 1982 CC491K	
Cap	Bronze BS EN 1982 CC491K	
Disc	Brass BS EN 12164 CW721R	1/4 - 3/4"
Disc	Bronze BS EN 1982 CC491K	1-3"
Hinge Nut	Brass BS 2874 CZ121	
Hinge Pin/Plug	DZR Brass BS EN 12164 CW602N	
Hinge	Bronze BS EN 1982 CC491K	
Drive Pin	Steel-Electro Brass	
ID Plate	Aluminium	



D142

### Dimensional Drawing



### Dimensions & Weights

SIZE (inch)	WEIGHT (kg)	A (mm)	B (mm)
1/4	0.26	54	37
3/8	0.25	54	37
1/2	0.39	62	43
3/4	0.62	76	52
1	1.07	94	65
1 1/4	1.65	110	76
1 1/2	2.56	126	89
2	4.05	152	108
2 1/2	6.4	186	134
3	9.3	218	160

**PRESSURE RATING:** PN32

**TEMPERATURE OPERATING RANGE:** -10 to 260°C

**UK END CONNECTION:** BS 21 Taper

**OPERATOR:** Swing Check, Screwed in Cap. Can be mounted vertically as long as flow is upwards

**SPECIFICATION:** Valves are manufactured in accordance with BS 5154 for Series A ratings.

Design is of the Y-Pattern having flat regrindable swing disc and integral regrindable body seat. The disc is retained on the hinge by a locked nut and is free to swivel. The hinge pin is retained by an external threaded plug.

Valves having ANSI threads also generally conform to MSS SP-80.

This valve is not suitable for use on group 1 gases or unstable fluids, as defined by the Pressure Equipment Directive 97/23/EC.