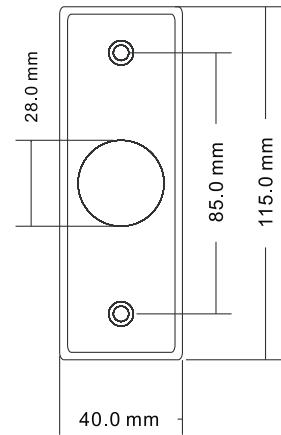


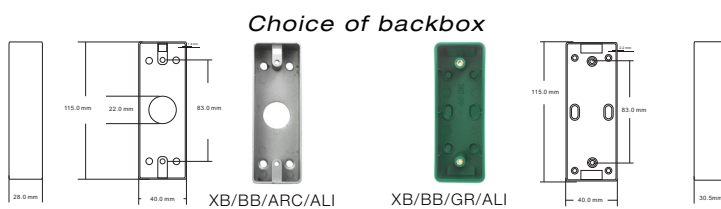
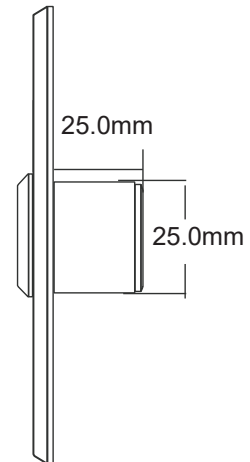
# XB/NT40/ALI

## Touch Free Sensor Exit Button

Brushed aluminum touch free exit button for indoor use with access control systems or electric locks. Ideal for sanitary applications such as cleanrooms, food hospitals, labs and industry use.



- Architrave Touch Free Sensor Exit Button
- Aluminium
- 120mm Read Range
- 2 LED Indicators
- Flush or Surface fitting - (choice of backbox)
- Size: 115 x 40 x 25mm



### Product codes

Code	Description
XB/NT40/ALI	Architrave Aluminium Touchless Sensor Exit Button
XB/BB/ARC/ALI	Metal Architrave Frosted Surface Backbox
XB/BB/GR/ARC	Green Plastic Architrave Backbox

### Specifications

Dimensions:	115 x 40 x 25mm	LED Indicator:	Blue LED (Standby) Green LED (Sensation)
Contact Rating:	12-24V, 3A	Panel:	4mm Thick Aluminium
Power:	12VDC & 25VDC	Weight:	0.086kg
Read Range:	120mm	<b>Wiring:</b>	
Output Contact:	NO/NC/COM	Red:	+12VDC
Mechanical Life:	500,000 Tested	Black:	-GDN
Logo:	Customizable	Green:	NO
Operating Temp:	-25°C~+55°C (14-131F)	White:	NC
Operating Humidity:	0-95% (relative humidity)	Yellow:	COM
Surface Mount:	Optional Backbox		

rev. 2-7/2020



[www.cqr.co.uk](http://www.cqr.co.uk)

[info@cqr.co.uk](mailto:info@cqr.co.uk)

Sales: +44(0)151 606 1000 Tech : +44(0)151 606 6311

CQR Security Ltd, 125 Pasture Road, Moreton, Wirral, CH46 4TH, UK

