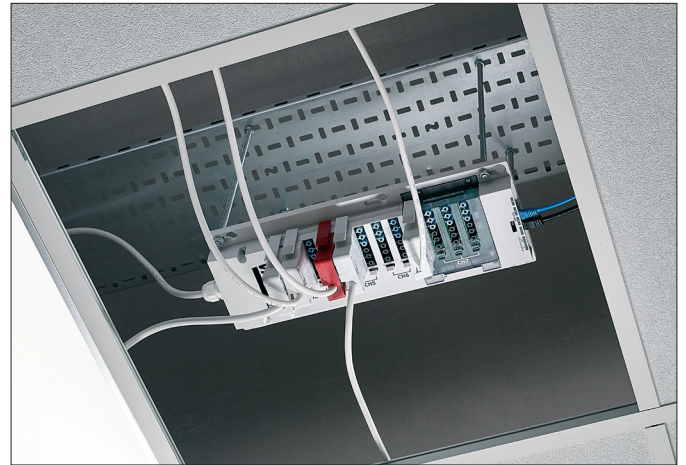
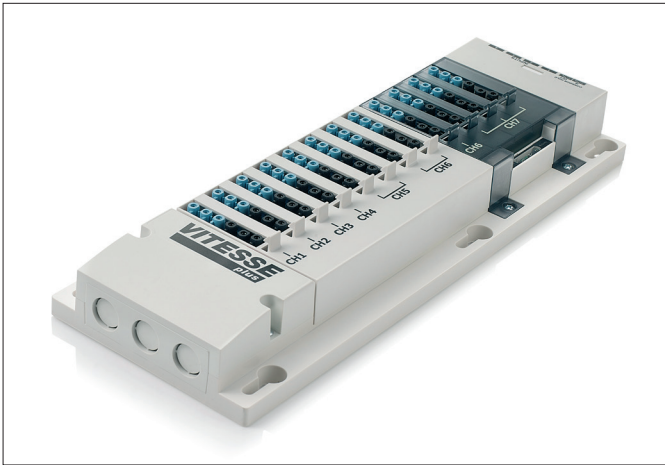


## VITP7-MB | Pluggable Lighting Control Module



The latest generation of Vitesse Plus LCM has been engineered to adapt to changing environments. With 7 channels and 12 outputs, the installation process is simplified. Up to 4 detectors can be connected to the Vitesse Plus LCM, maximising the capacity to save energy and money.

With 11 SELV connections and the ability to facilitate graduated dimming, the Vitesse Plus LCM takes lighting control to the next level of functionality.

### Key features

- 12 outputs
- 7 channels
- 4 RJ45 inputs
- SELV switching
- DALI or DSI dimming
- Graduated dimming
- Scene setting
- Absence recovery
- Switch detection time
- Manufactured in the UK
- 5 year warranty included

### For easy installation and wiring

Four M6 keyways allow you to fix to the slab in the ceiling void, or channel nut fixings for rod suspension or fixing to a cable basket.

There is a spacious wiring compartment with rear or side entry cable knock outs for connecting mains and switch inputs. With 12, 6-pole pluggable outputs grouped over 7 channels, Vitesse Plus offers the perfect solution to most commercial, retail and education applications.

### Interface flexibility

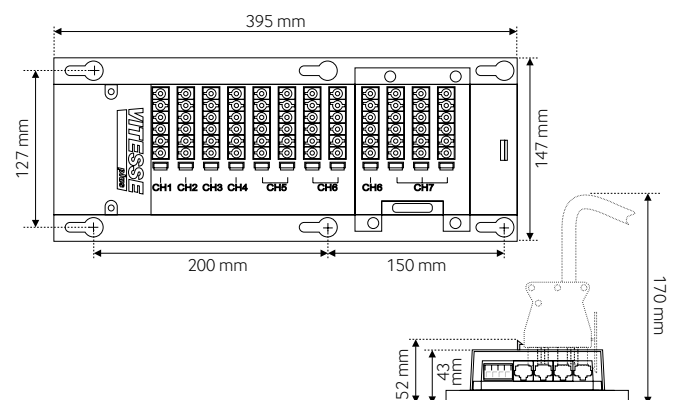
Four RJ45 inputs allow you to connect detectors and scene plates. The LCM has SELV connections which allows for the connection of up to 5 centre biased retractive switches and one keyswitch for ELT.

A full range of presence detectors are available including mid-range and long range microwave detectors and both flush mount and mini PIRs. There is also a range of mounting accessories for detectors.

Scene plates are available in a white or brushed stainless steel finish.








Corridor hold is available by simply linking LCMs together using a 2 core cable and connecting to the dedicated corridor hold terminals no area controllers or networking is required.

### Dimensions (mm)



## Technical Data

<b>Part Code</b>	<b>VITP7-MB</b>
<b>Supply voltage AC</b>	230 VAC +/- 10%
<b>Relay rating</b>	Switched live 10A Switched permanent live 6A
<b>Terminal capacity</b>	Mains – 4mm <sup>2</sup> in wiring compartment Switched inputs – 1.5mm <sup>2</sup> in wiring
<b>Maximum Load per LCM</b>	10A
<b>Maximum loads</b>	
Incandescent lighting	6A
Fluorescent lighting	6A
Compact fluorescent lighting	3A
LED lighting	3A
Fans & ventilation equipment	3A
Switch sodium-vapour lamps	loads via a contactor
<b>Inrush rating</b>	See installation guide for inrush rating details
<b>Working temperature range °C</b>	-10°C to 35°C
<b>Humidity</b>	5 to 95% non-condensing
<b>Material (casing)</b>	Flame retardant ABS and PC/ABS
<b>Insulation class</b>	Class II
<b>Purpose</b>	Operating control
<b>Construction</b>	Independently mounted control for surface mounting
<b>Type of action</b>	Type 1.B action micro disconnection
<b>Software</b>	Class A
<b>Pollution</b>	Degree 2
<b>Compliance</b>	EMC-2004/108/EC LVD-2006/95/EC
<b>Weight</b>	1.000

 <p>www.cpelectronics.co.uk</p>	<p>CP Electronics A Business unit of Legrand Electric Limited, Brent Crescent, London NW10 7XR, UK t. +44 (0)333 900 0671 info@cpelectronics.co.uk</p> <p>connect with us    </p>	<p><b>Important notice:</b> This device should be installed by a qualified electrician in accordance with the latest edition of the IEE Wiring Regulations and the applicable Building Regulations.</p> <p>Due to our policy of continual product improvement CP Electronics reserves the right to alter the specification of this product without prior notice.</p> <div style="text-align: right;">     </div>
--	---	--