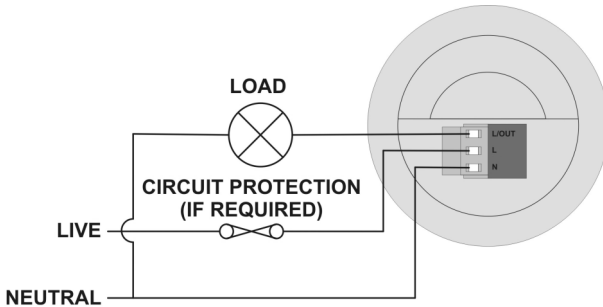
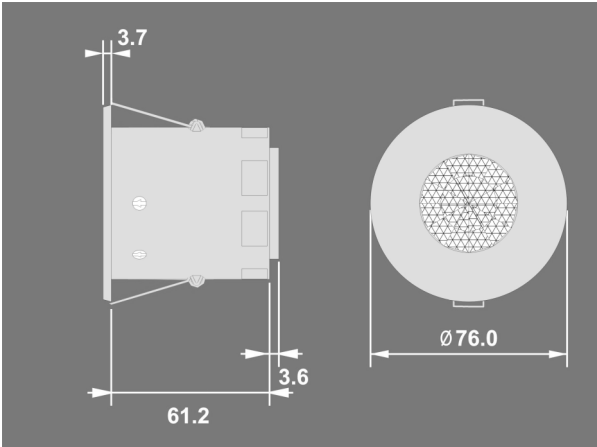


EBDSPIR/IP

Ceiling Presence Detector Sealed IP55



Overview

The EBDSPIR series of presence detector switches are designed to provide automatic control of lighting, heating or ventilation loads. They detect movement using a PIR sensor and turn the load on. When an area is no longer occupied the load will switch off after an adjustable time out period.

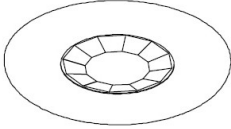
An adjustable internal light sensor provides additional energy saving in lighting applications. When an area is occupied lighting is only switched on when the level of natural light is below a preset level.

When the unit is first powered up the PIR sensor will always detect immediately regardless of whether the room is occupied.

The /IP variant of these products is sealed to IP55 when installed flush in a ceiling.

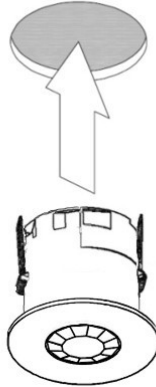
FLUSH FIXING

Warning - be careful bending springs when mounting unit.

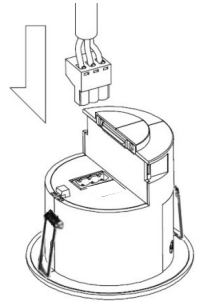


1

Hole Ø64mm

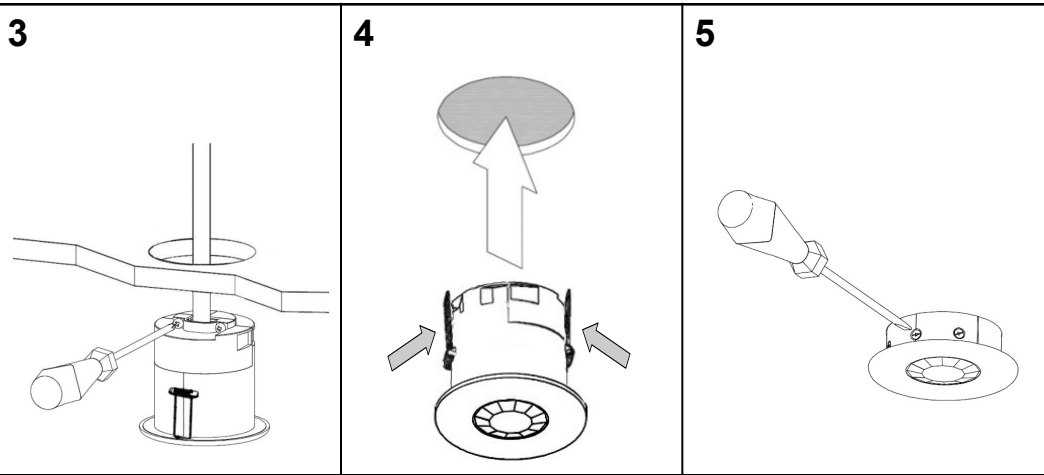


2



Installation

- The detector should be sited so that the occupants of the room fall inside the detection pattern shown overleaf, at a recommended height of 2.8m on the ceiling. Note that the lower the sensor is installed the smaller the detection range will be, subject to the parameters shown on the diagram.
- Avoid direct sunlight entering the sensor.
- Do not site within 1m of forced air heating or ventilation.
- Do not site within 1m of any lighting.
- Do not fix to a vibrating surface.
- Wire the product using the connector using the diagram on the front page.
- To switch from more than one position simply wire two or more units in parallel.
- Mount as shown above.
- To maintain the IP rating the unit must not be used on ceilings with an uneven surface.
- Ensure that the unit is pushed tightly into place after commissioning.
- Set the LUX level to maximum
- Power the unit up—the load should
- Vacate the room or remain very (should take no more than 2 min)
- Check that the load switches on
- To set the final LUX level wait enough that lighting is required. wise (at minimum), very slowly t lights come on. Note that when t lights will **always** come on with
- Set the time required.



and the time to minimum.
 should come on immediately.
 still and wait for the load to switch off
 (minutes).
 when movement is detected.
 until the level of natural daylight is just
 Starting with the LUX control fully clock-
 turn the control anti-clockwise until the
 the LUX control is at maximum then the
 occupancy.

Fault Finding

LOAD DOES NOT COME ON

Check to see if the live supply to the circuit is good. Strap across the *L* and *LIVE OUT* terminal to turn the load on.

If the supply and wiring are good, check the LUX level setting. Increase the LUX level setting to allow the controller to turn on at higher ambient natural light level.

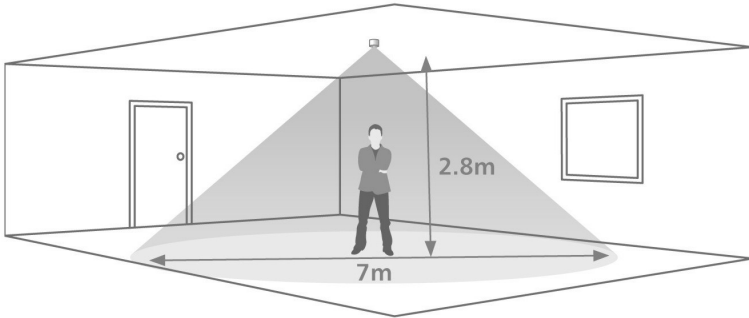
If the detection range is smaller than expected, check the diagram above. Rotating the sensor slightly may improve the range.

LIGHTS DO NOT GO OFF

Ensure that the area is left unoccupied for longer than the selected timer setting.

Make sure that the sensor is not adjacent to circulating air, heaters or lamps.

Detection Pattern



Area of high sensitivity  Area of lower sensitivity 

Specification

Part Numbers

LOAD

EBDSPIR/IP Ceiling mounted presence

8 Amp resistive and incandescent lighting
6 Amp fluorescent lighting
3 Amp compact fluorescent lighting
3 Amp low energy lighting
3 Amp low voltage lighting (switch primary of transformer)
Fluorescent lighting (max 6 fittings recommended)
For fluorescent lighting total power factor correction capacitance must not exceed 40 μ F.
3 Amp fans and ventilation equipment
Switch SON lighting loads via a contactor

SUPPLY VOLTAGE 220-240 Volts AC 50 Hz

TIME OUT PERIOD Adjustable 10s to 30m

LIGHT LEVEL Light to dark

TERMINAL CAPACITY 2.5 mm²

MATERIAL Flame retardant ABS

TYPE Class 2

IP RATING IP55

TEMPERATURE -10°C to 35°C

CONFORMITY EMC-89/336/EEC

LVD-73/23/EEC



IMPORTANT NOTICE!

This device should be installed by a qualified electrician in accordance with the latest edition of the IEE wiring regulations.

C.P. Electronics Ltd

Brent Crescent

London

NW10 7XR

United Kingdom

Tel: + 44 (0) 333 900 0671

Fax: + 44 (0) 333 900 0674

www.cpelectronics.co.uk

enquiry@cpelectronics.co.uk



FM 45789



EMS 534520



Due to our policy of continual product improvement CP Electronics reserves the right to alter the specification of this product without prior notice.

Ref #WD223 Issue 3