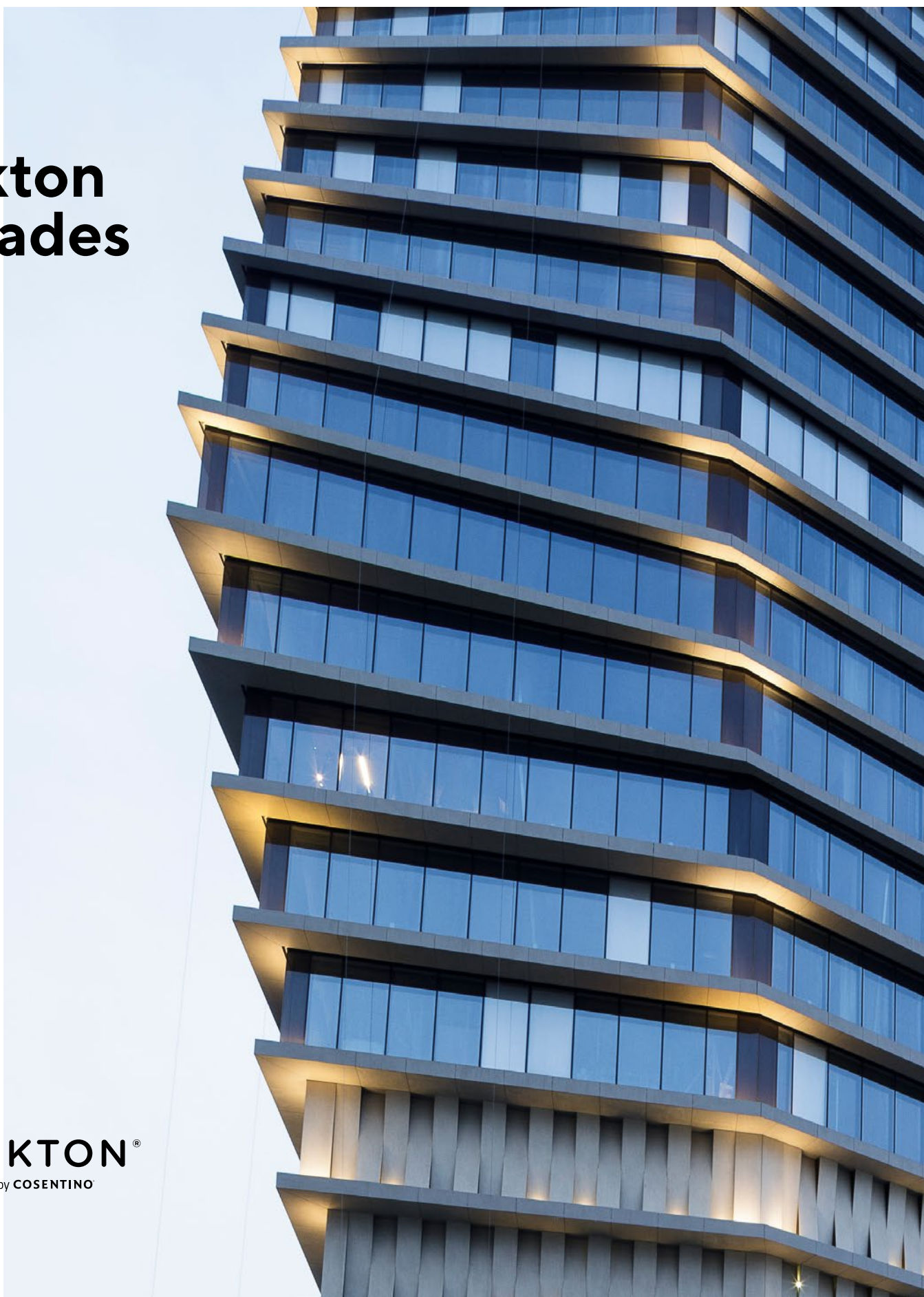

Dekton Facades

 **DEKTON**[®]
designed by COSENTINO



Index

Corporate

- 04**
Cosentino®
- 06**
A space designed for professionals, by professionals
- 08**
Cosentino, Towards a genuine circular economy
- 10**
A new digital space for professionals on pro. cosentino.com
- 12**
Global surface project

Dekton®

- 16**
The best surface for your projects
- 17**
Benefits of Dekton®
- 17**
Applications
- 18**
Why use Dekton® on your facade
- 20**
Personalised architectural surfaces

Facade system

- Mechanical fixing:**
- 24**
DKT1 System
- 28**
DKT2 System
- 32**
DKT3 System
- 36**
DKT4 System
- Mixed fixing:**
- 40**
DKM System
- Chemical fixing:**
- 44**
DKC System
- 48**
DKB system
- 49**
DKS System
- 50**
Types of corner joints

References

- 52**
Gunni & Trentino
Flagship Store. Madrid
- 54**
ToHa by Ron Arad and Avner Yashar. Tel Aviv, Israel
- 60**
Cap Ferrat by Juan Carlos Di Filippo. Rio de Janeiro, Brazil
- 66**
Armonk Professional Center. New York City. USA
- 68**
Rafa Nadal Academy by Movistar. Manacor, Majorca, Spain
- 70**
Cajamar Building. Almería, Spain
- 72**
Porsche Design Boutique. Illinois. USA
- 74**
Skallan Private Villa. Sweden
- 76**
Schaffhauserstrasse. Zurich. Switzerland
- 78**
MK8 - Kap West. Munich. Germany
- 80**
Valdebebas 127. Madrid. Spain.

Attachments

- 82**
Certifications
- 83**
Technical characteristics
- 86**
Colours and trends
- 82**
Colour menu
- 92**
Global presence

An aerial night view of a city, likely Los Angeles, showing a wide highway with traffic and city lights. In the foreground, a rooftop sign for 'COSENTINO SURFACES' is illuminated in white. A small 'VSA' logo is visible on the right side of the sign structure.

COSENTINO SURFACES

VSA



COSENTINO®

The Cosentino Group is a global, family-owned Spanish company that produces and distributes innovative, high value surfaces for the world of architecture and design. Cosentino Group currently distributes its products and brands in over 80 countries and directly manages, from its central headquarters in Almería (Spain), its own facilities in more than 20 of those countries.

The multinational company has seven production factories (six in Almería, Spain and one in Brazil); 15 manufacturing sites for kitchen and bathroom countertops and facades (14 in the United States and one in Almería); one intelligent logistic centre in Spain, two distribution hubs in the United States and more than 90 Cosentino Centers around the world. 90% of the company's consolidated revenue is generated in international markets.

COSENTINO CITY

LOS ANGELES / MANHATTAN / MIAMI / SAN FRANCISCO / MONTREAL / TORONTO / BARCELONA
MADRID / LONDON / MILAN / SINGAPORE / SYDNEY / DUBAI

**A space designed
for professionals,
by professionals**



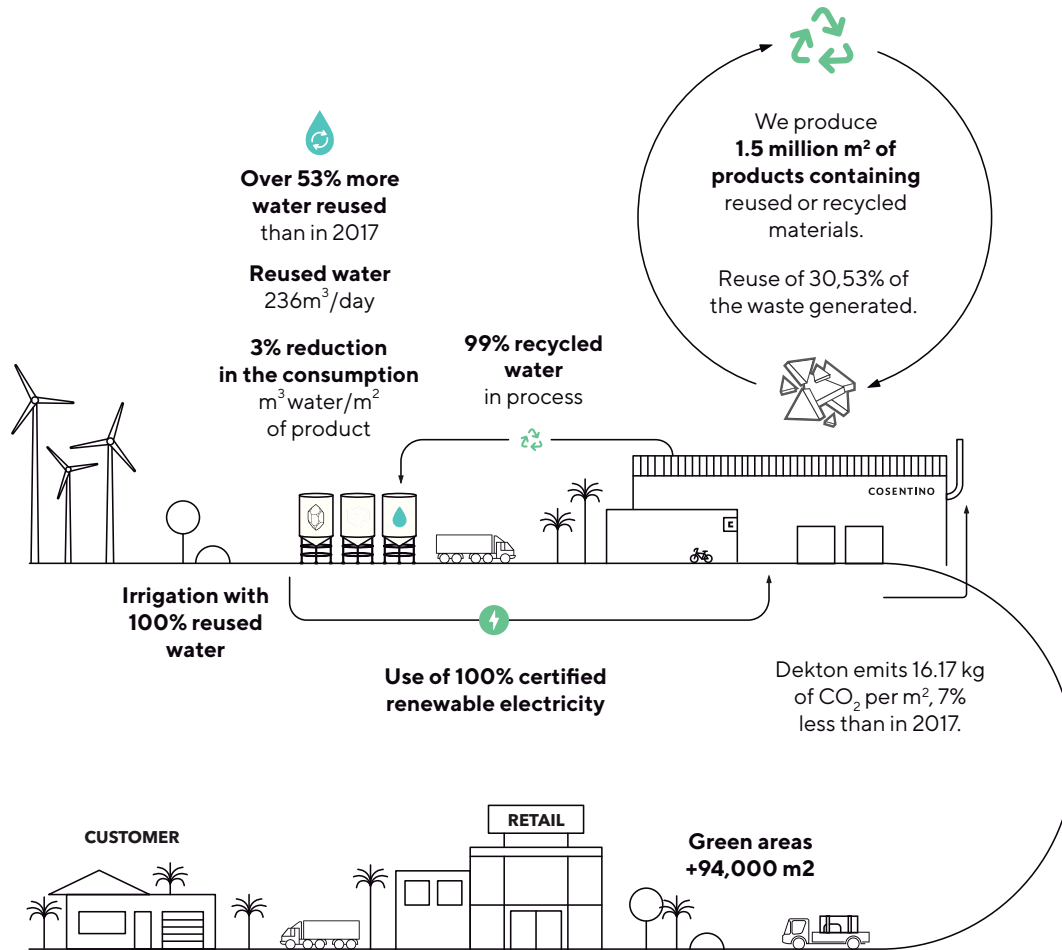
Cosentino City provides the architecture and design community with an interactive Cosentino experience: the chance to find inspiration and see, touch and get to know its wide range of products close-up.





The showroom offers a workspace, Wi-Fi and courtesy fridges, all within a welcoming atmosphere. A space where those who advocate our brands can meet with clients or simply find inspiration for their next projects.

Cosentino, Towards a true circular economy




 Renewal of Regulation
ISO 14001:2015

25
 We promote sustainability
 Products with up to
25 years warranty


Mobility Policy
 In 2018, we avoided the
 equivalent of 230 tonnes
 of CO₂ emissions


We obtained our Environmental Product Declaration (EPD) for Silestone®


Agreements with shipping companies
 Evitamos 625 toneladas
 In 2018, we avoided the
 equivalent of 625 tonnes
 of CO₂ emissions

The data provided refers to activities at the Cantoria Industrial Park in 2018 (Almería, Spain)

Water management

Water is a limited resource. That is why we have adopted the following measures in the manufacture of Dekton®:

- Four tanks located at various points around the factory to enable the collection of clean water and its reuse in the process.
- A system for obtaining water through reverse osmosis technology.
- A water pouring and clarification system that enables water used in the process to be treated and saved.

Atmosphere

Protecting the air is crucial, not only for the environment, but also for our health. The measures adopted in the Dekton® manufacturing process include:

- Hermetic transport systems from the truck to the mill for micronised raw materials.
- Integrated transport systems that minimise potential emissions from the point of origin of the coloured raw material (atomisers) up to the point of storage (24 hermetic silos).
- Centralised systems for the collection and purification of powder using seven-bag filters located at various points throughout the factory.
- Installation for the suction, treatment and recovery of fumes from the ovens.
- MDR and SPR systems for the recovery of heat from the ovens.

Sustainable Model

Sustainable mobility plays a fundamental role in Cosentino's sustainability policy. For this reason, more than two kilometres of cycle paths have been built at the new industrial park where Dekton® is produced, and bikes have been purchased for staff to use.

In addition, we also encourage the use of electric vehicles for transporting people and suppliers around the industrial park.

Waste Evaluation

The following systems have been installed for the recovery of waste generated during the manufacturing process:

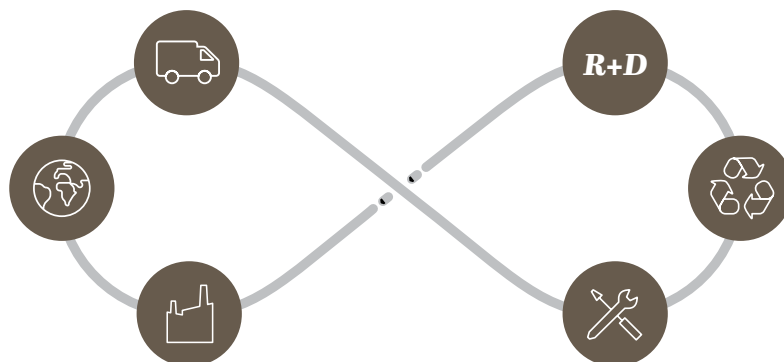
- Various facilities for reusing crude waste before the heat treatment process.
- A system of dust recovery at the various emissions capture points.
- Cleaning machinery (sweeping-mopping type) with water recycling system.

Energy Efficiency

In addition to the savings methods mentioned above, such as heat recovery from the oven fumes, further efficiency initiatives have been planned. For lighting in exterior thoroughfares, LED lighting has been installed, with time controls based on total traffic. To illuminate the interior of the factories, we have maximised natural light by installing skylights.

Green Spaces

More than 25,000 m² of green spaces have been created around the new industrial park. More than 200 trees and native species have been planted that suit the dry conditions of the area.





Services

Cosentino

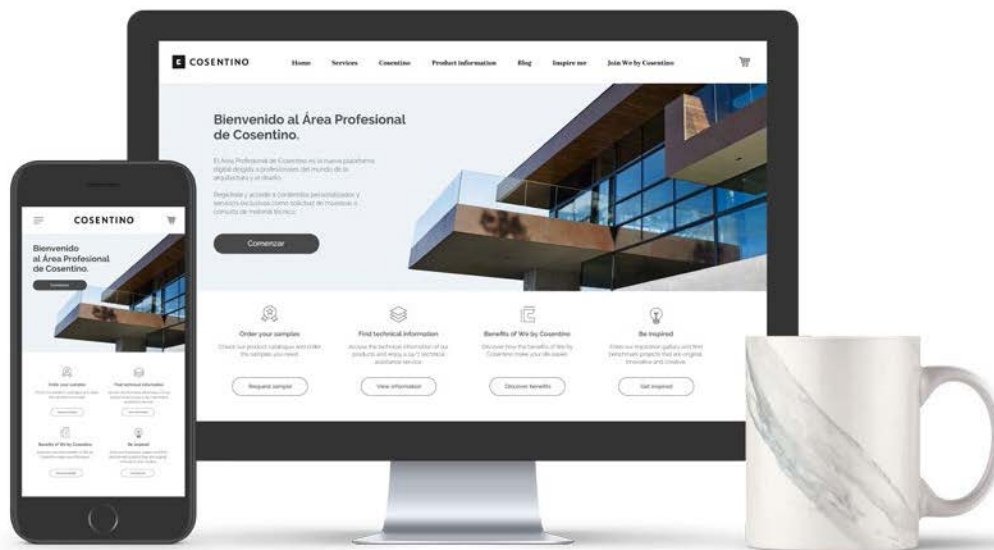
Product information

Blog

Inspire me

Join We by Cosentino

A new digital space
for professionals on
pro.cosentino.com



Big advantages at just one click

Request your **samples** wherever and whenever you like, **free of charge**.

Our whole **Library of catalogues** online.

Latest news about design and architecture on our **Trends blog**.

Discover **projects by other professionals** using our products

Share your projects with other professionals

Download all the **technical information** you need for your project.

Request **displays for your showroom** directly.

Registering your projects allows you to **earn Actios points, which you can redeem** for a wide variety of products and services.

Request **sales support** online.

leading the
future together.



We are delighted to introduce you to “**Cosentino We**”, an innovative platform aimed at connecting architecture and design professionals around the world.

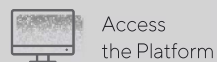
“**Cosentino We**” offers users a world of tools and special benefits, as well as exclusive features for all members of our community.

Contact your Cosentino representative to find out more details about this programme, as well as all the information we’ve prepared for you about the different levels of membership and the benefits of each. You can also find these in the “**My Benefits**” section within the platform.

Visit pro.cosentino.com

We love to recognise your collaboration

We share your passion for design and innovation. Discover **Cosentino We** and enjoy all the benefits as a member of our community.



Access
the Platform



Material for
your Displays



Trip for
Key Clients



Request
Samples



Incentives
Campaign



Hospitality
Activities



Share your
Projects



Use our
City Centers



Receive
Exclusive Gifts

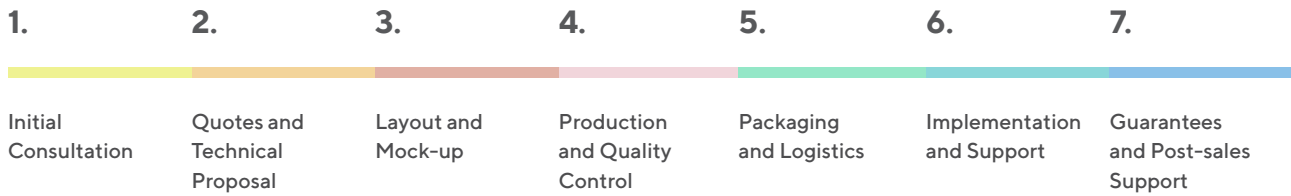


Download
Content

#WeAreCosentino

Global surface project

From the initial ideal to the final project.



1.

Initial Consultation

Detailed study of each element of your project

Technical advice



Project Manager Assignment



A team of more than 15 experts (architects, engineers, etc.) in project analysis and execution.



Software for management and interpretation of blueprints.



A team of designers.



Different teams visit the Studio.



Advise on construction regulations.



A chance to obtain any certificate.



Advice and solutions for LEED certification.

2.

Quotes and Technical Proposal

Technical proposal



A study of customer proposals and input of new ideas by our team of experts.



R&D&I team for the development of personalised colours.



Layout recalculation: Less Waste = Bigger savings/ Improved aesthetic finish.



A detailed itemised budget.



Speedy budget preparation <48h.



Completion of specific certificates or tests for the project



Coordination in security documentation.

3.

Layout and Mock-up


Possibility of final project aspect in 3D Digital



We send actual size samples.



Possibility of on-site mock-up.

4.

Production and Quality Control
Project factory. Facades, flooring and cladding

More than 187 employees Maximum capacity of nearly 140,000 m² per month.

Automatic tile line
Measurements: From 30.5 to 15.25 cm to 200 x 120 cm

Average capacity: 930 m²/day

Automatic large format line

Measurements: From 61 x 61 cm to 320 x 142.25 cm Capacity: 2787 m²/day

Finished product factory

More than 140 employees.

Maximum capacity of 22,300 m² ready for shipping each month (approx. 5,500 slabs). Average production: 9290-11 150 m²/month

Special tasks

Development, supply and placement of all kinds of grooves and holes for anchoring, moulding, etc.

Any finish on the edge of the pieces.

Measuring the pieces to improve the physical and mechanical properties of the materials, as well as their safety.

Project manufacture guarantee

Project management.

Client-production dialogue.
Communication of project specifications to factory.

Approval of production plans by the client.

Planning of production dates.

Photography of goods prior to shipping.

Quality control

Guarantee of time frames and communication between project and company thanks to our project managers.

Daily monitoring of planned production dates.

Quality control during material production

Quality control in the production of pieces

Quality control at packaging stage, with a photographic record of shipments before loading

Support when receiving the material/piece from our technicians, according to the project

5.

Packaging and Logistics

Customised packaging

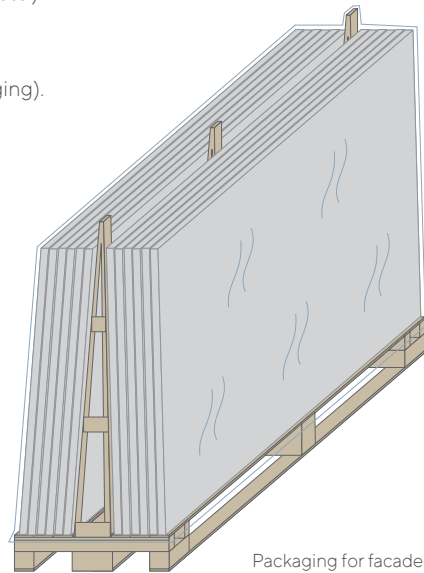
- Weight by parcel (to limit weight).
- Dimensions by parcel (to limit dimensions).
- Design (Vertical, horizontal, etc.).
- Organisation (by lots, items and size, etc.).
- Shipments in order of manufacture.
- Materials. (Possibility of ECO-Packaging).

Support with project efficiency

- Packing list with order of placement.
- Inspection points of our material.

Logistics

- A Logistics and Planning team with more than 170 people.
- More than 40 Containers and 20 trucks per day.
- Preferential agreements with the world's leading shipping companies.
- Dry port in our facilities with capacity for more than 150 containers.
- Agility in customs and ports.
- Experts in large format shipping.
- Automated logistics platform.
- Frequency, delivery times and shipment volumes that adapt to the project requirements.



Packaging for facades

6.

Implementation and Support

- Guidance on handling and transport.
- Guidance on handling on site.
- Manuals available for clients on placement, cleaning and maintenance, special works, etc.
- Technical support throughout the execution of the project.
- Possibility of a site visit by a Project Manager for support.

7.

Guarantees and Post-sales Support



Warranty

Monitoring and traceability of all shipments to destination.

Guarantee that our products are delivered to clients in perfect condition.

Transport insurance to guarantee the perfect condition of our shipments.

Site visits by the Quality team to resolve any incidents.

Standard guarantees for materials produced by Cosentino.

“Tailor-made” guarantees for each project according to its requirements.

Dekton® is the only brand that gives you a written certified warranty. Cosentino, a global manufacturer of surfaces, is taking an industry-leading position once again by offering a genuine 25-year guarantee on Dekton® products.

Cosentino has further underlined its innovation credentials by offering clients such a long guarantee. Confidence in the long-term performance of materials for facades, such as Dekton, is synonymous with success, guarantee and reliability.

Below, we outline the steps to follow and the necessary requirements to fulfil the terms of the Dekton® guarantee.

- Users must retain their purchase receipt for the guarantee to apply.
- The guarantee covers products that have received maintenance in accordance with the guidelines provided by Dekton Surfaces, which are available on www.cosentino.com
- Workshops must receive the Cosentino certification following instructions by our Dekton® trainers.

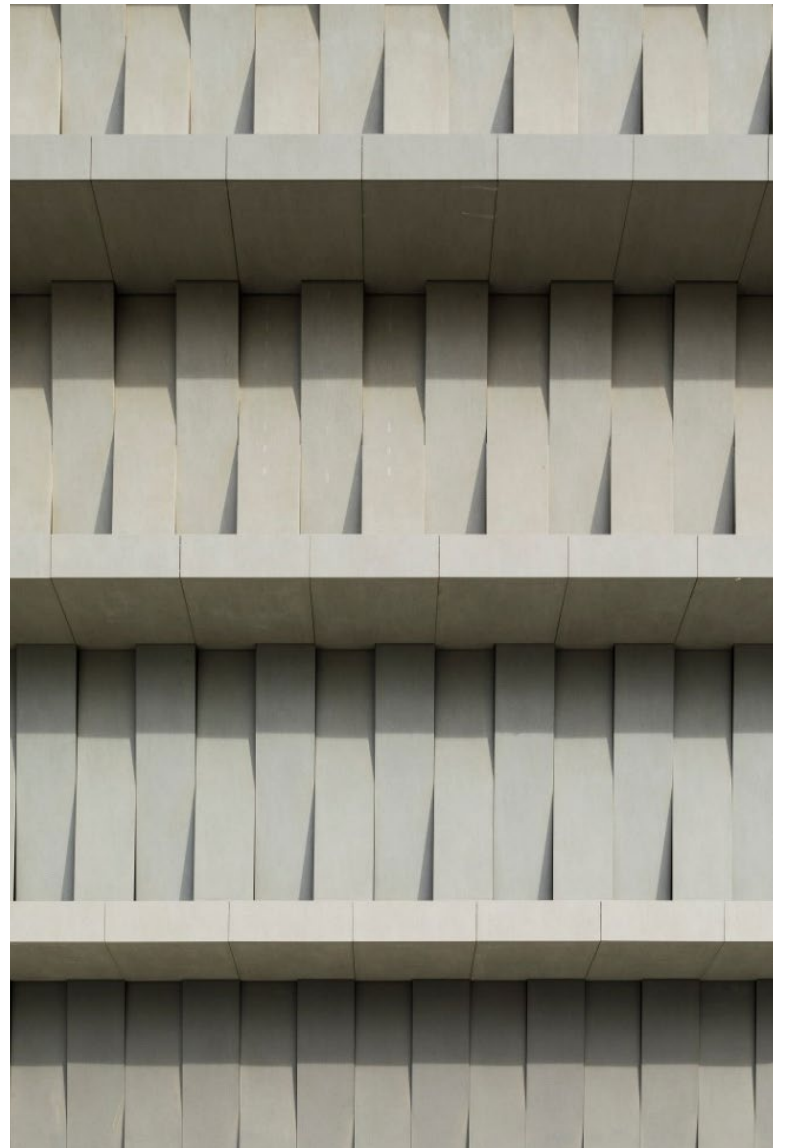
DEKTON®



In just a few hours, Dekton® imitates what nature has taken thousands of years to perfect, thanks to its exclusive PST (Particle Sintering Technology) process.



**The best surface
for your facades**



Benefits of Dekton®

Dekton® has all the technical characteristics required for any hard surface, even one as demanding as a facade.



High mechanical resistance



High resistance to ultraviolet light



Ice and thaw resistance



Easy and minimal maintenance



Resistance to stains and graffiti



High resistance to chemical agents



Hydrophobic surface



Maximum fire and heat-resistance

Applications



Façades



Interior cladding



Bathroom panelling



Bathroom and swimming pool flooring



Stairs



Exterior worktop



Kitchen worktop



Bathroom Worktops

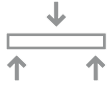


Exterior terrace flooring



Interior flooring

Why use Dekton® on your facade



Flexural strength

When comparing Dekton with other common façade materials, according to the EN 14411 rule, we find that:

Dekton®, values higher than 45 N/mm ²	Extruded Ceramic (A1b) min. > 18 N/mm ²	Dry Pressed Ceramic (B1a) min > 32 N/mm ²
--	---	---



High resistance to fire, sun and freezing

Dekton® has the best classification in terms of fire resistance: A1. UV rays do not deteriorate or change its colour, it remains unchanged over time. It is not affected by sudden changes in temperature as it is resistant to thermal shock.

Determination of thermal shock resistance according to UNE EN ISO 10545-9

Result	Pass without damage
--------	---------------------

For ventilated façades, the material is delivered in mesh with A2 s1 d0 classification.



Easy maintenance

Graffiti cleaning is simple as the facade is unaffected by highly concentrated chemical agents, making it very low maintenance.

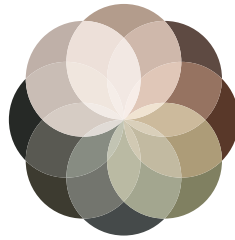
Resistance to aggressive products

ACIDS Sulphuric (77%) + Nitric (70%)	BASES Caustic soda (40%)	OXIDANTS Hydrogen peroxide (30%)	SALTS Sodium chloride (10%)	SOLVENTS Acetone (98%)
No damage				



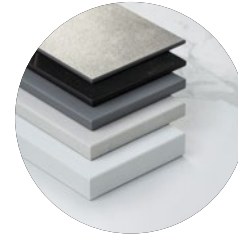
Adjustment of geometric complexities

The possibility to produce Dekton® in simple or complex pieces makes it a versatile material for covering complicated volumes.



Infinite design and colour possibilities

The variety of Dekton® colours allows for a wide palette to be used as another design tool, maintaining uniformity and character.



Wide range of thicknesses

The variety of Dekton® thicknesses available allows for the use of thicker pieces in the lower area and finer pieces above. This maintains the consistency of the whole and giving each section the required technical characteristics.



Large format

Thanks to Dekton®'s large format of up to 3200x1440 mm, it is possible to cover floor to ceiling spaces with a single piece, respecting the contour outlined by the structure. This emphasises the width of the gaps and the sincerity of the object.



Mass colour

Dekton® is coloured throughout the whole mass of the product, allowing for a continuous finish and total integration of the edges with the surface of the piece.



Joint resolutions

Dekton® allows for angled joints with straight or bevelled edges, and even with bespoke pieces to create a monolithic look, thanks to its resistance to dilation



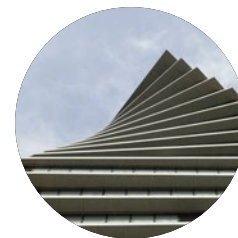
Chromatic perfection

Thanks to a rigorous system of measurements and quality controls from its production onwards, Dekton® ensures the stability of its tone throughout the façade, making it possible to use the material in large panels while maintaining visual harmony.



Flat surfaces: visual continuity

The excellent flatness offered by Dekton® ensures that façade surfaces are practically free of any dips or bumps. This means that it is ideal for boosting the design around it, where visual continuity and uniformity are key.



Limitless shapes

Architectural plans with different gradients and complex geometries can bring materials to their limits. Few can work under traction and compression in the face of inclement weather and remain unchanged and requiring little maintenance over time.

Personalised architectural surfaces

Direct dialogue takes place between the Cosentino team and the client to develop specific colours, always with the guarantee of Dekton® properties and benefits.

We can implement your ideas, new colours, specific images or logos, and replicate the look of materials that need to be replaced or restored. The possibilities are endless.

An R&D + Innovation team, together with our internal designers, work in direct contact with the customer through our CustomColour Product Manager.



Rafa Nadal Academy. Manacor, Majorca, Spain



Personalised Blue: Colour created exclusively for this facade



ToHa by Ron Arad and Avner Yashar. Tel Aviv, Israel



Colour variety used on this facade

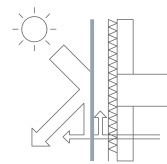
Façade system

Dekton® offers design excellence, composition, colour, geometry and resistance for façades. Without a doubt, it is the most

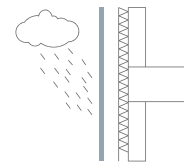


differentiating element in the appearance of a building, providing the most diverse and solvent options.

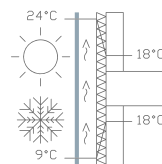
The Ventilated Façade protects the wall with an exterior skin, creating an ascending air chamber with chimney effect between the insulation and the exterior cladding, with thermal, acoustic and functional benefits that add considerable value



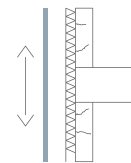
Energy Saving



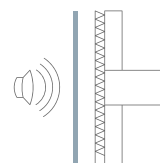
Protection against water filtration



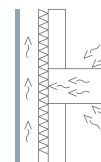
Health standards:
Avoids thermal bridges
and condensation



Protection of
supporting wall



Sound insulation



Reduction of
thermal bridges



DKT1

Hidden mechanical fixing using undercut screws on the reverse side of the piece.

Page 24



DKT4

Mechanical fixing using visible staple that holds the pieces.

Page 36



DKB

Chemical fixing with adhesive directly onto supporting wall.

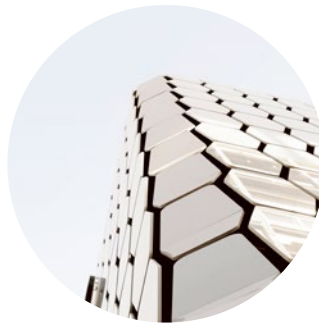
Page 48



DTK2

Hidden mechanical fixing with metallic profile on the continuous groove at the edge of the piece.

Page 28



DKM

Mixed hidden fixing (chemical and mechanical) with groove on reverse side of the piece.

Page 40



DKS

Chemical fixing with adhesive onto external thermal insulation composite system (ETICS).

Page 49



DKT3

Hidden mechanical fixing with staples at intervals along the groove on the edge of the piece.

Page 32



DKC

Chemical structural fixing of pieces onto profiles.

Page 44

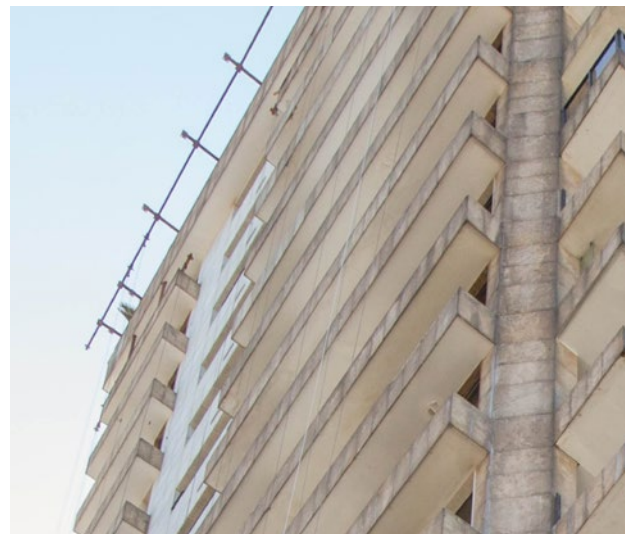


CAP FERRAT
BY JUAN CARLOS DI FILIPPO
RIO DE JANEIRO, BRAZIL

DKT1

Hidden mechanical fixing using undercut screws on the reverse side of the piece

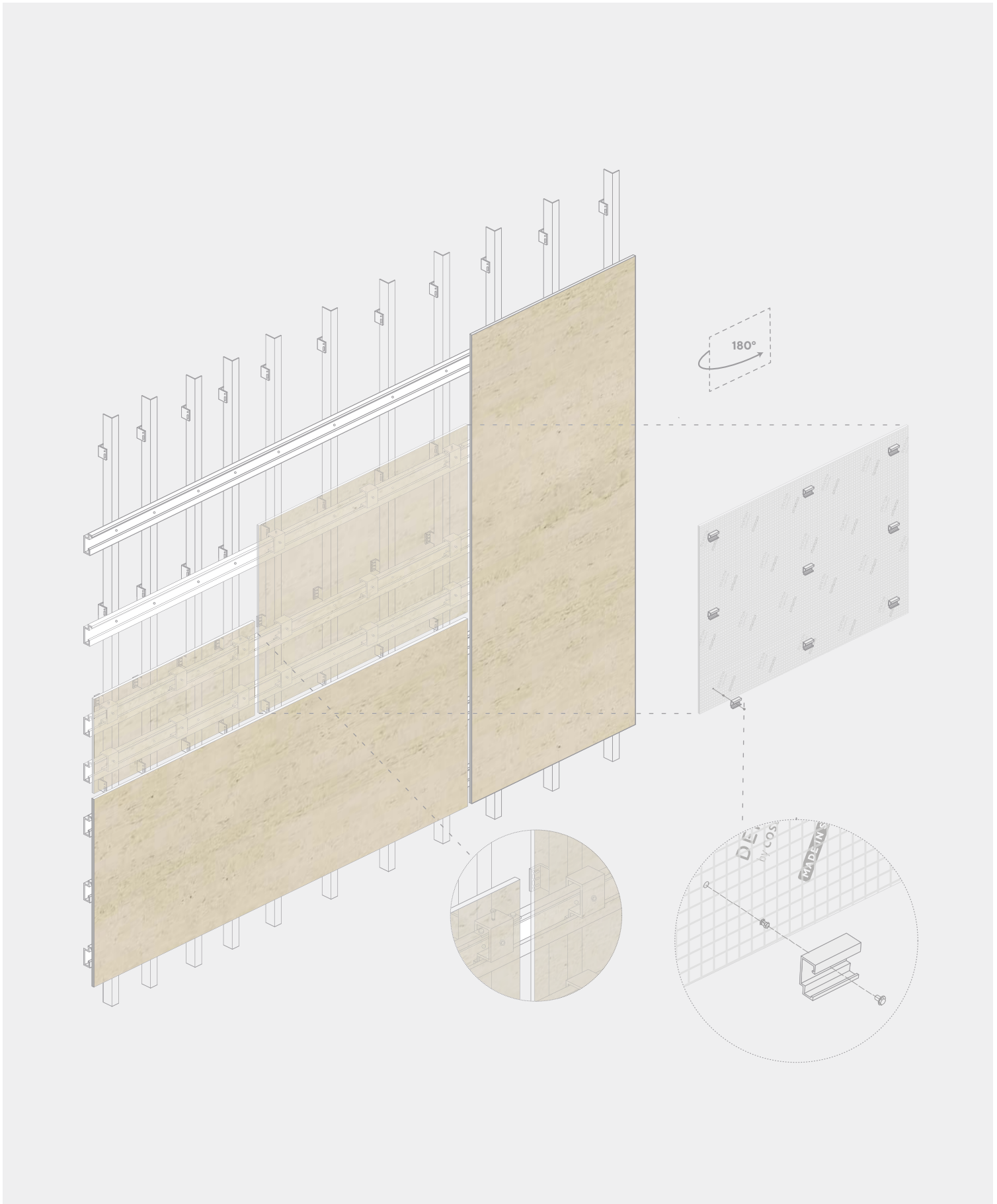
Projects with complex cutting. Some highly complex façades include diverse formats in the same design. A flexible system is required that optimises the points of fixture of the material on the sub-structure and which responds to the important loads of each project. In the DKT1 system, according to the density



of the fixings and minimum distances between perforations, a calculation is made of the individual forces to be absorbed by the material and the anchoring. sub-structure. Dekton® has certified this system for ventilated façades according to ETA 14/0413 and BBA 16/5346 for 12 mm and 20 mm thicknesses, although it can be used for other non-certified thicknesses.

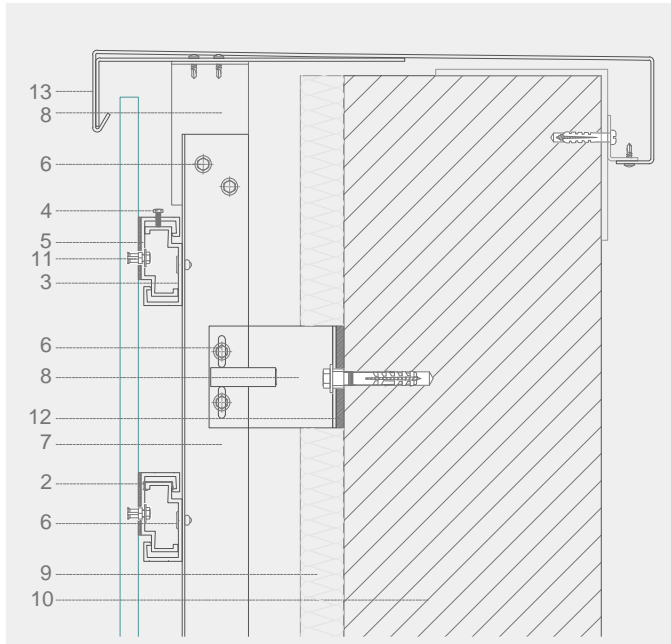
of the fixings and minimum distances between perforations, a calculation is made of the individual forces to be absorbed by the material and the anchoring.

Cylindrical perforation or undercut perforation achieve a clean and exact hole, where the peg and truncated cone-shaped screw work together in traction on the reverse side of the material. The screw anchors to the profile, guaranteeing that the whole piece is fastened to the

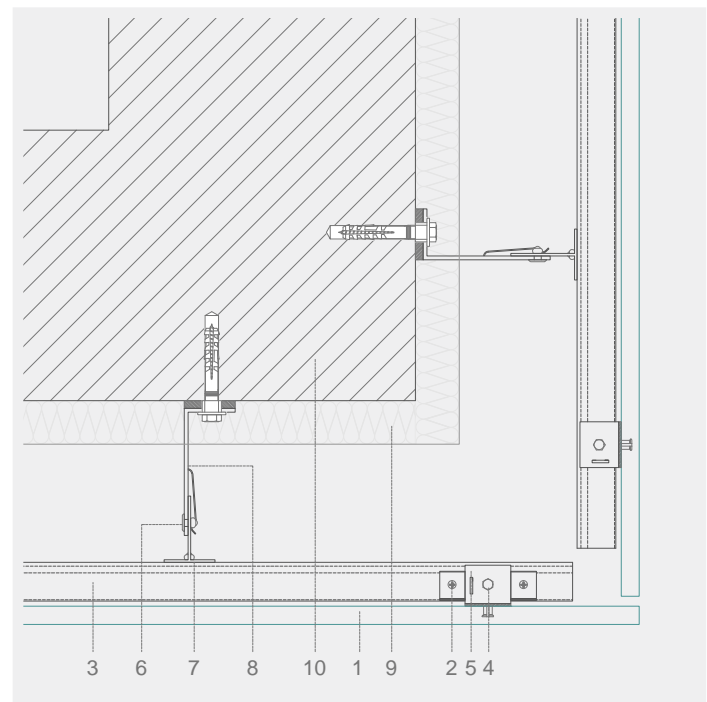
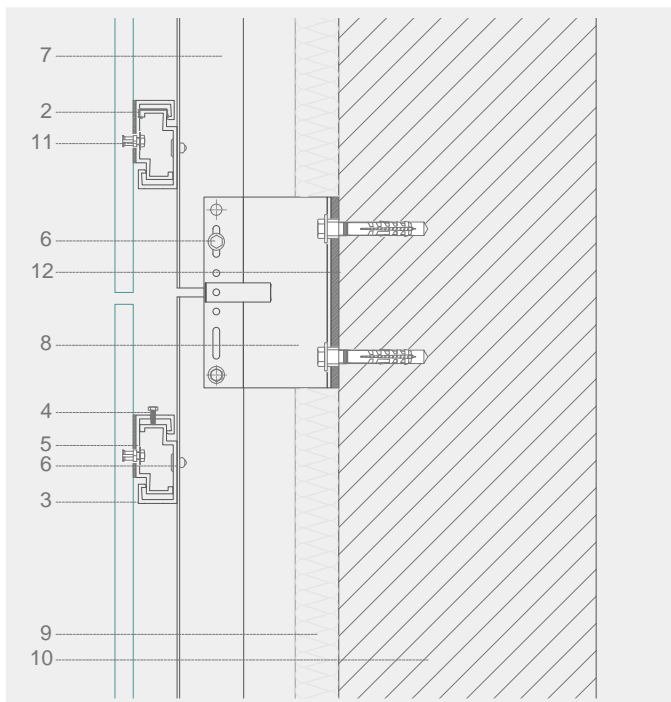
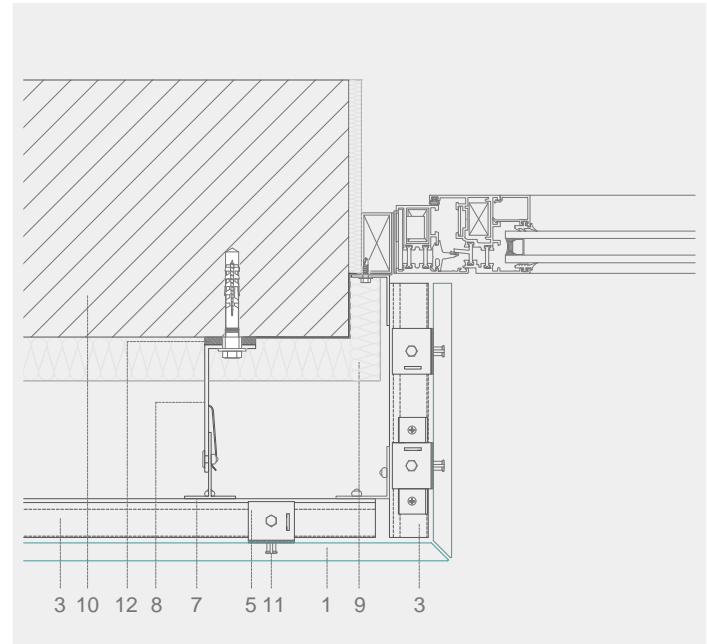


Construction details

Vertical section



Horizontal section



- 1. Dekton
- 2. Fixing clip
- 3. Horizontal Profile
- 4. Propelling screw
- 5. Adjustable screw

- 6. Self-propelling screw
- 7. Vertical Profile
- 8. Fastening bracket
- 9. Thermal insulation (optional)
- 10. Supporting Wall

- 11. Keil Anchoring
- 12. Rupture of Thermal Bridge
- 13. Padding

ESC 1:5



VALDEBEBAS 127 BUILDING
MADRID, SPAIN

DTK2

Hidden mechanical fixing with metallic profile on the continuous groove of the piece's edge

Projects with horizontal hierarchy. Some designs seek to achieve a very marked lineal frame, from spatial volume to the dimension of the construction details. The assembly as a design tool in these cases can be a major ally and help to realise this linear concept. This DKT2 system comprises of a



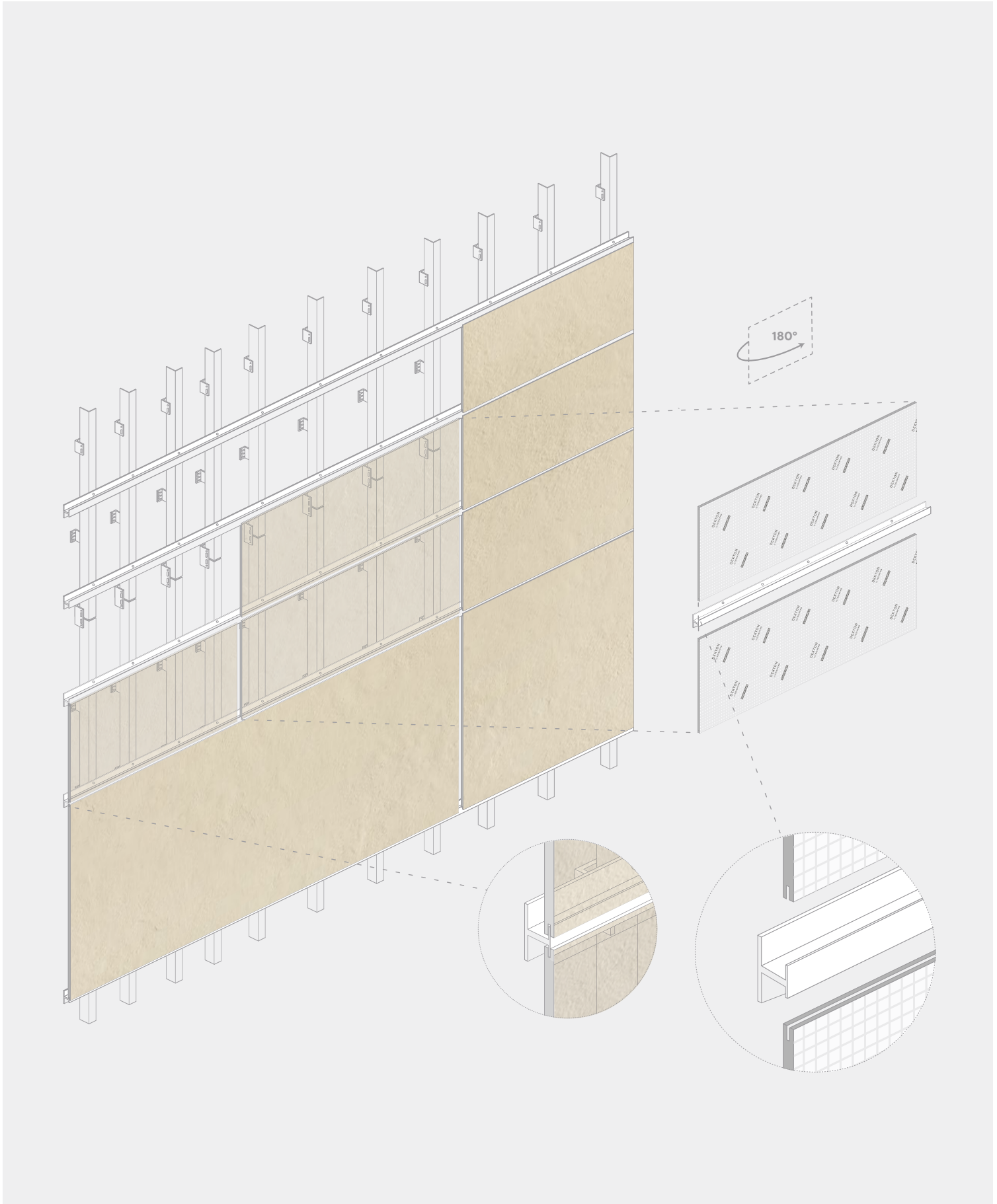
horizontal profile that supports the face in a continuous way, all based on a groove that runs the whole length of the piece.

A groove of minimum 3-4 mm and with a



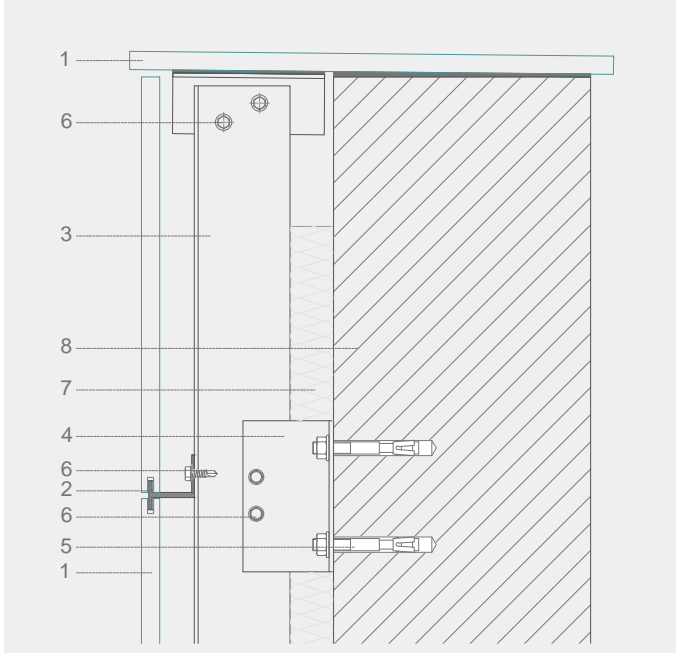
depth of up to 15 mm is required to conceal the length-wise profile that is anchored to the uprights of the sub-structure.

This solution creates an almost hermetic ventilated chamber, due to the continuity of the supporting profile itself. Dekton® has this system certified for ventilated façades according to ETA 14/0413 and BBA 16/5346 for 12 mm and 20 mm thicknesses, although it can also be used with 30 mm.

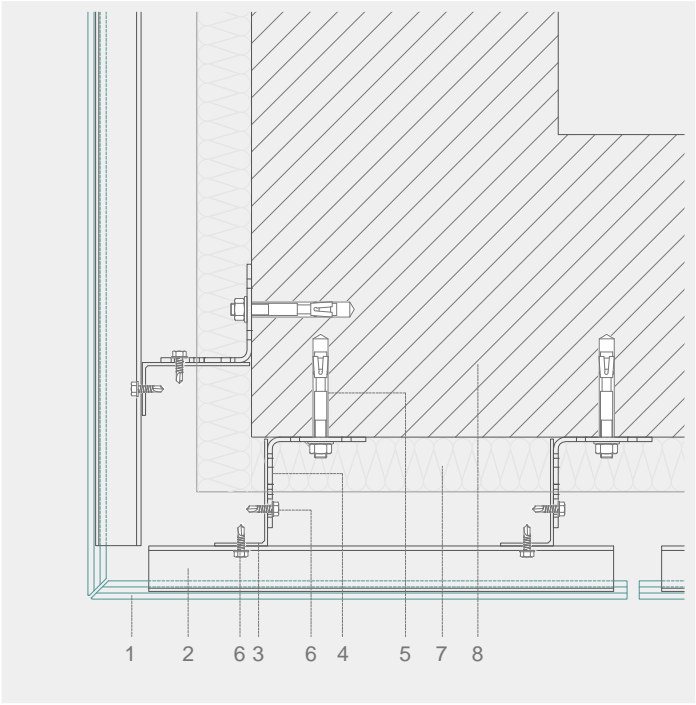
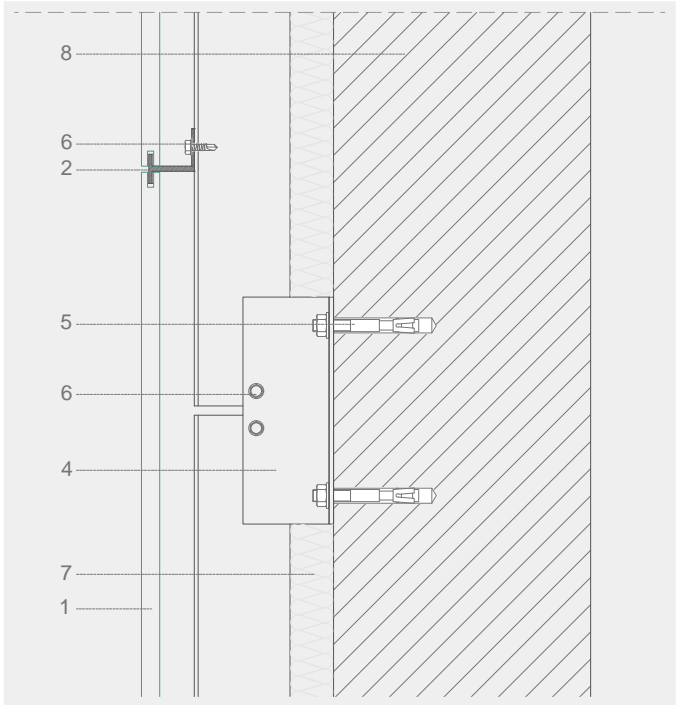
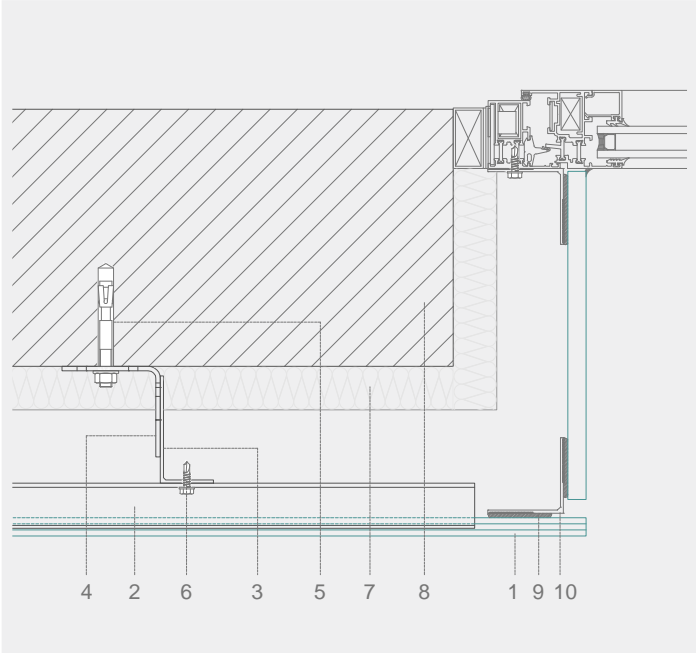


Construction details

Vertical section



Horizontal section



- 1. Dekton
- 2. Horizontal Profile
- 3. Vertical Profile
- 4. Fastening bracket
- 5. Mechanical Anchoring
- 6. Self-Propelling Screw
- 7. Thermal Insulation
- 8. Supporting Wall
- 9. Adhesive
- 10. Corner Profile in "L"

ESC 1:5



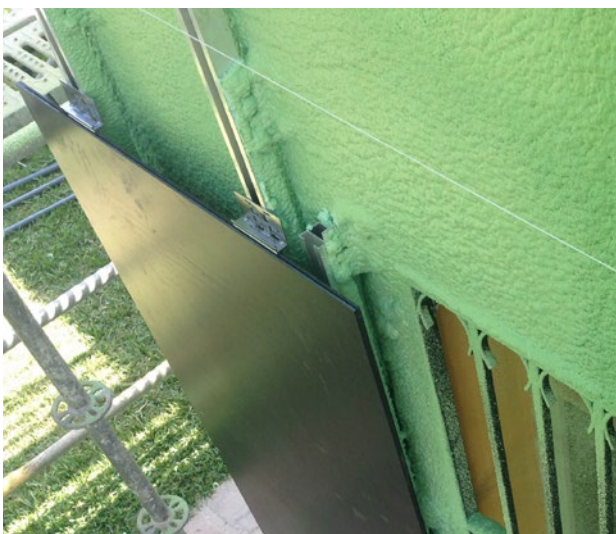
URBAN CONTROL CENTRE
SANTA BÁRBARA IN MÁLAGA, SPAIN

DKT3

Hidden mechanical fixing with staples at intervals along the groove on the edge of the piece

Projects designed to the last detail. To achieve continuous transparent pieces, the meeting points of windows and corners can be critical when making decisions about cutting pieces or when designing aesthetic and functional construction solutions.

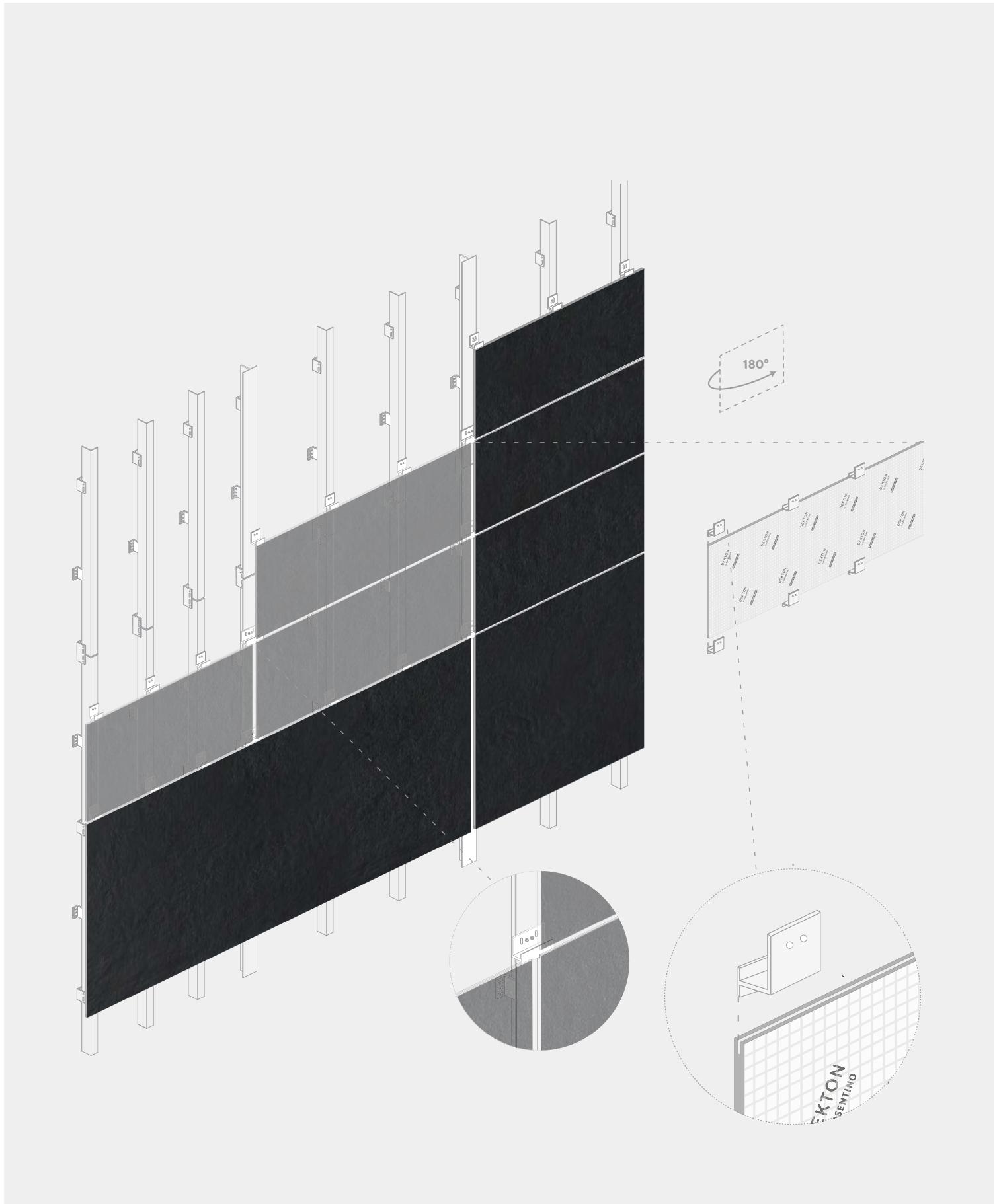
In the DKT3 system, pieces are fastened to the profile by hidden staples that are inserted at intervals along a continuous groove at the edge of the piece, which can end at 3 cm at each extreme, thereby improving the aesthetics and functionality of the lateral pieces.



This system is fairly flexible, although there are certain dimensional limits, as a maximum the piece can be 70 cm on the vertical for the 12 mm thickness and 100 cm for the 20 mm thickness.

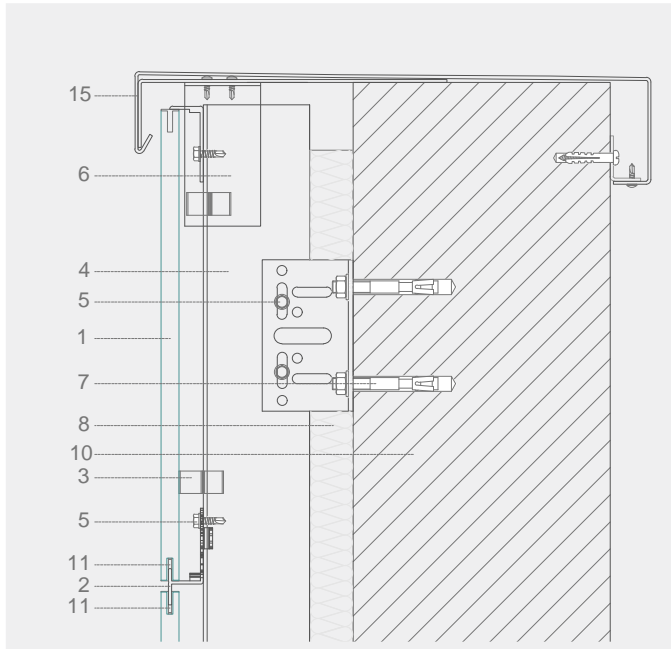
In cases that require a greater dimension on the vertical section, the 30 mm thickness should be used to counteract fatigue on the grooved part of the material from the anchoring.

Dekton has this system certified for ventilated façades according to ETA 14/0413 and BBA 16/5346 for 12 mm and 20 mm thicknesses, although it can be used for other non-certified thicknesses.

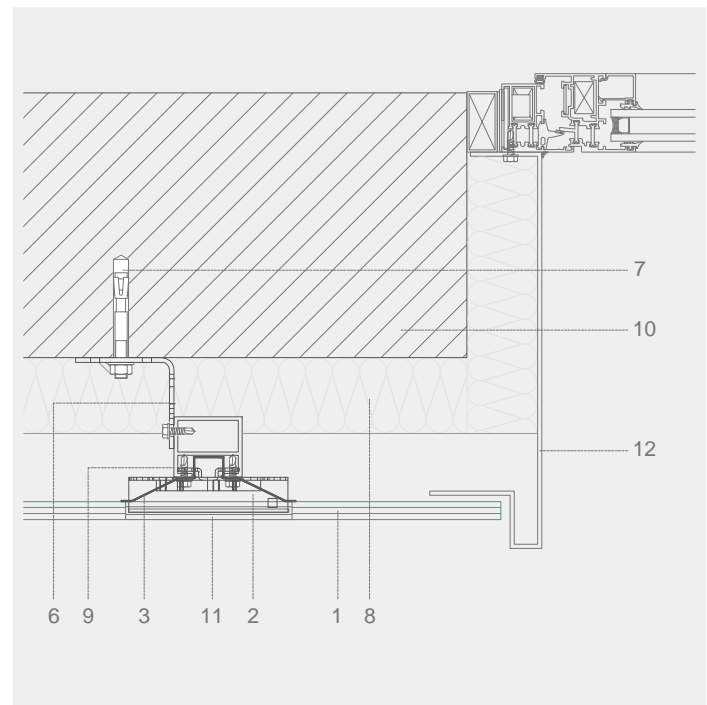
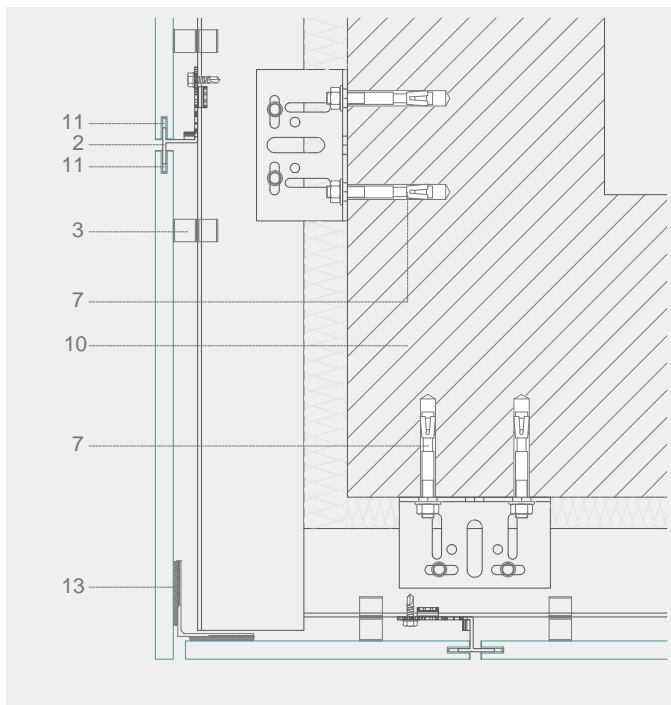
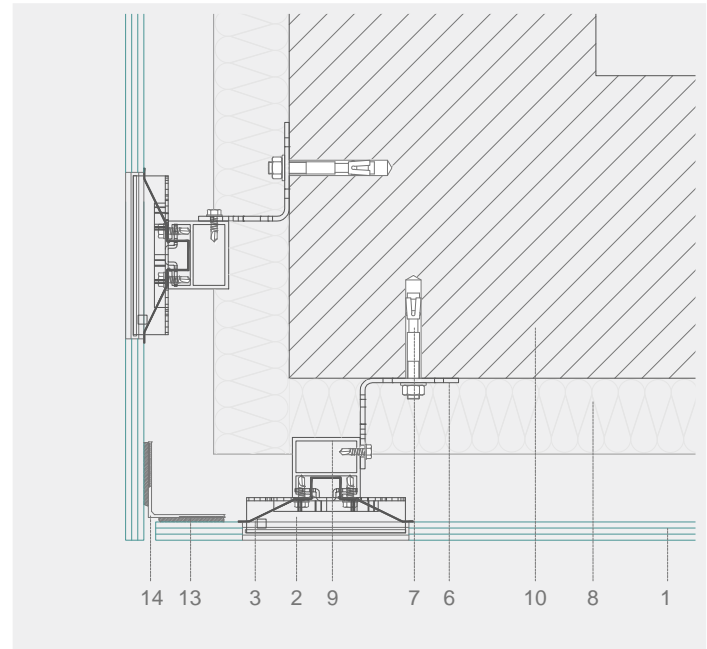


Construction details

Vertical section

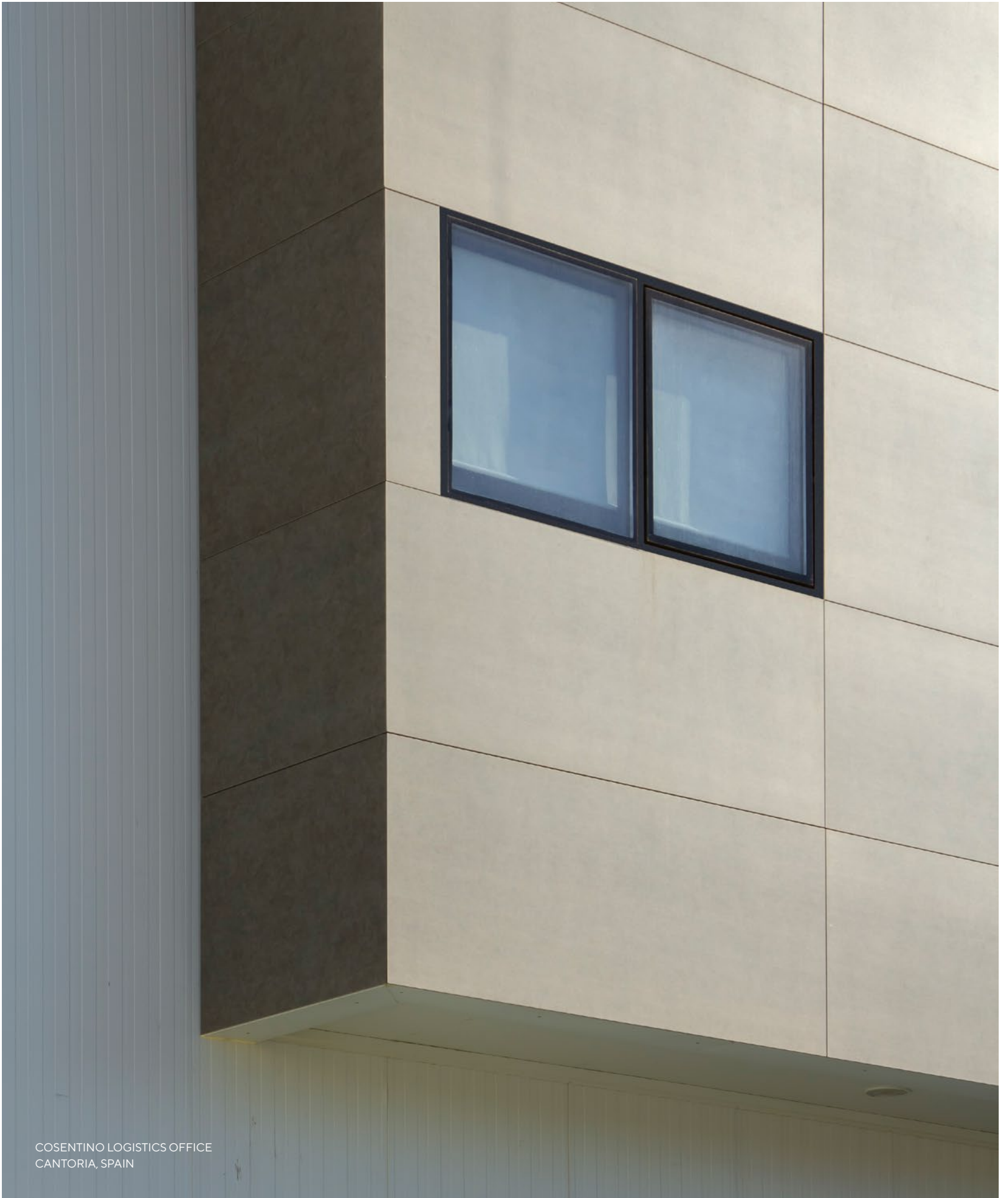


Horizontal section



- | | | |
|---------------------------|-------------------------|---------------------------|
| 1. Dekton | 6. Fastening bracket | 11. Fastening in Groove |
| 2. Stainless Steel Staple | 7. Mechanical Anchoring | 12. Aluminium Jamb |
| 3. Pressure Spring | 8. Thermal Insulation | 13. Adhesive |
| 4. Vertical Profile | 9. Supporting Wall | 14. Corner Profile in "L" |
| 5. Self-Propelling Screw | 10. Aluminium Jamb | 15. Padding |

ESC 1:5



COSENTINO LOGISTICS OFFICE
CANTORIA, SPAIN

DKT4

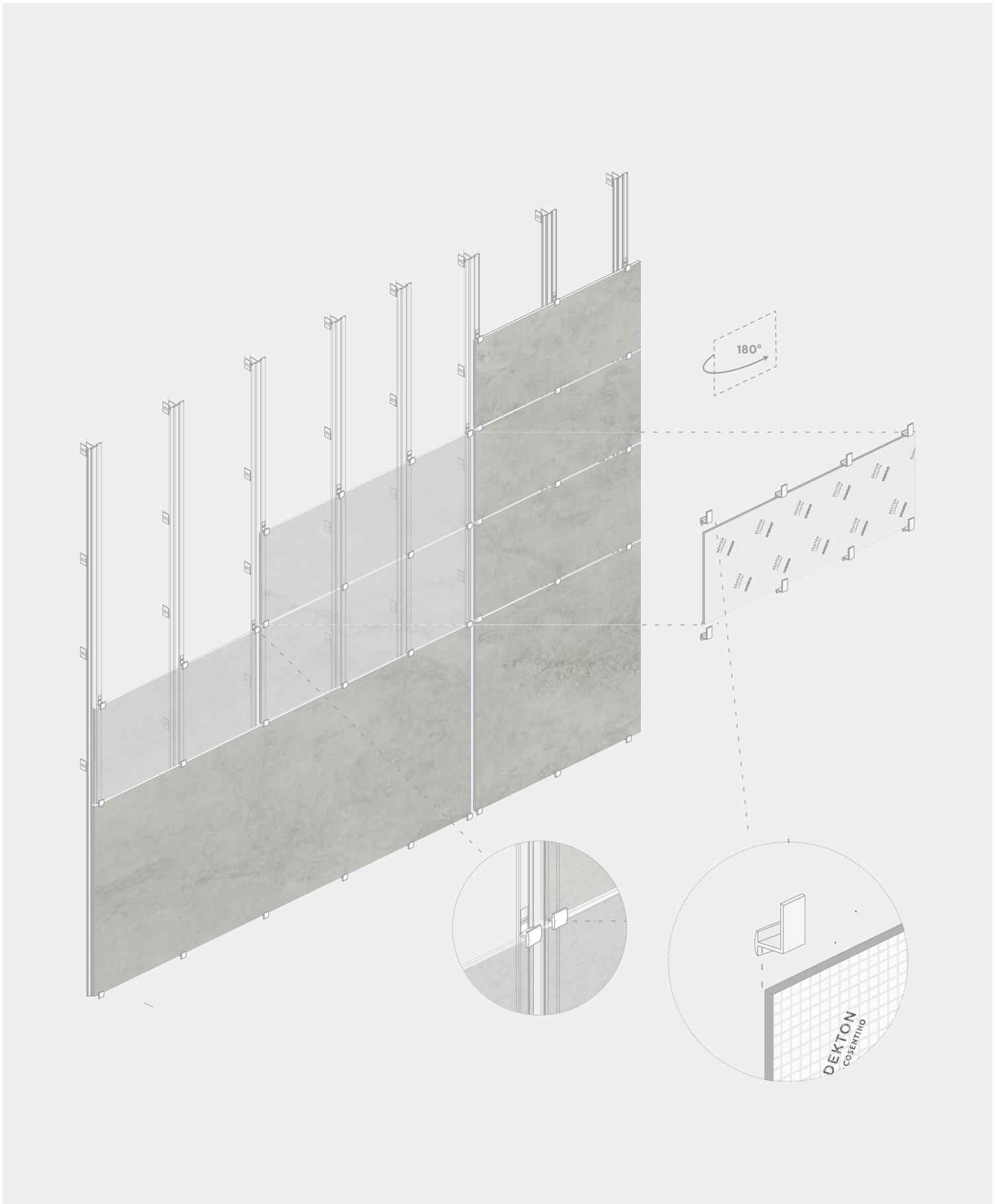
Mechanical fixing using visible staple that holds the pieces

Projects with modest resources. Making the exterior constructive elements visible is another expressive route taken by modern architecture. The building does not try to hide its structures, facilities, profile system... Instead, it shows off all the complexity of its construction in an honest way.



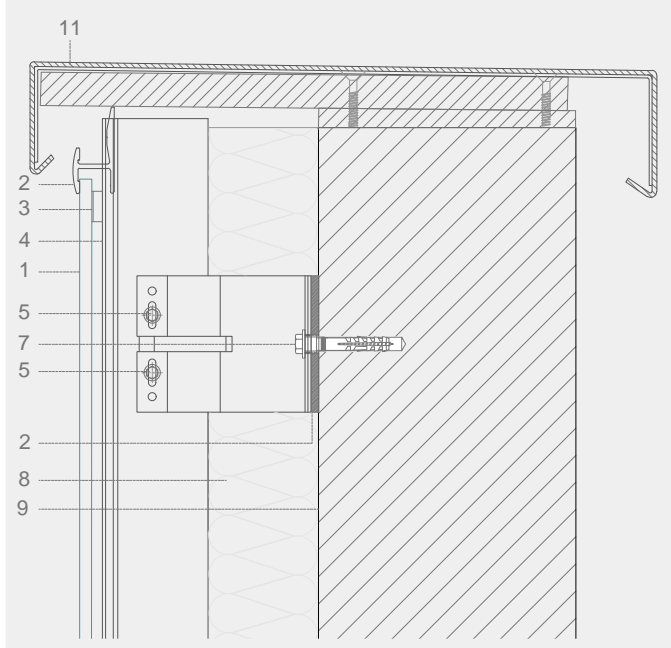
In the DKT4 system of visible fixing, the piece is shown as it is, with the fastening tabs of the upper and lower pieces visible to the eye. The staples hold both pieces and keep them in line with the plane of the façade, as well as maintaining the distances (joints) between consecutive pieces.

Although this type of fixing is fairly flexible in adapting to the thickness of the material, it is ideal for the smaller sizes, lighter weights and smaller thicknesses.

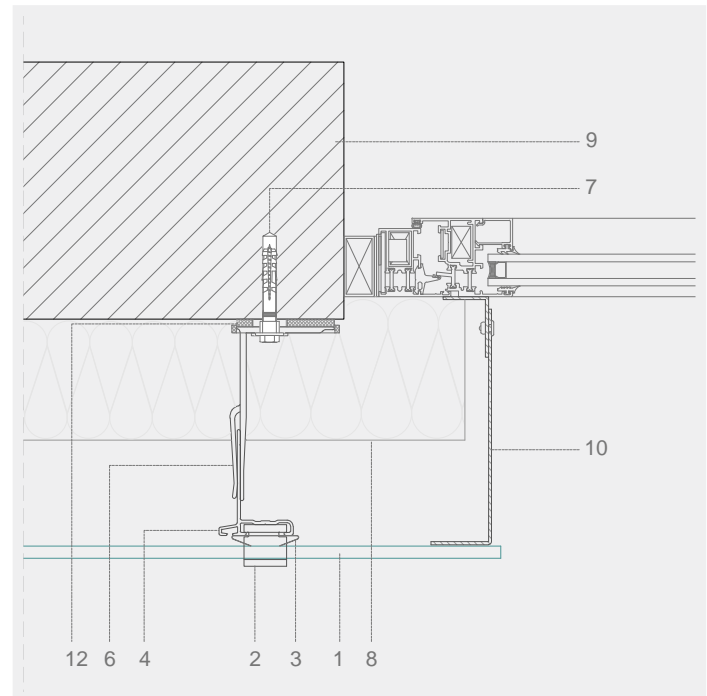
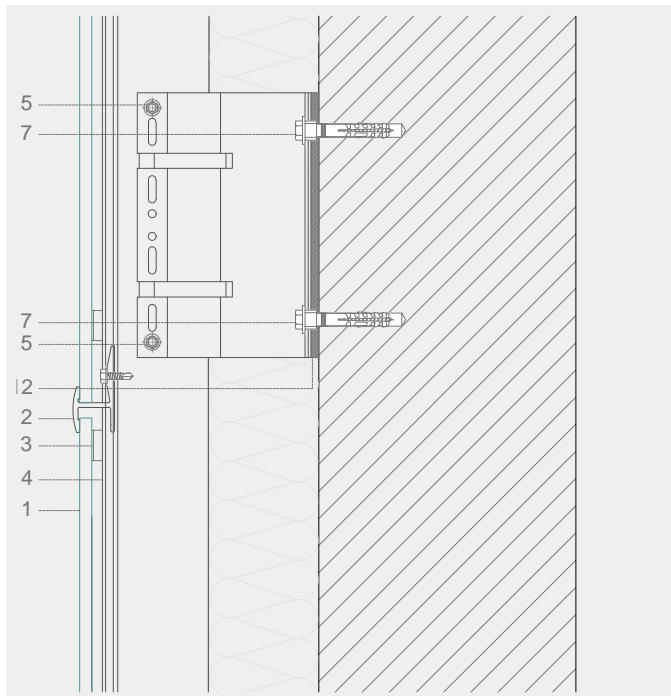
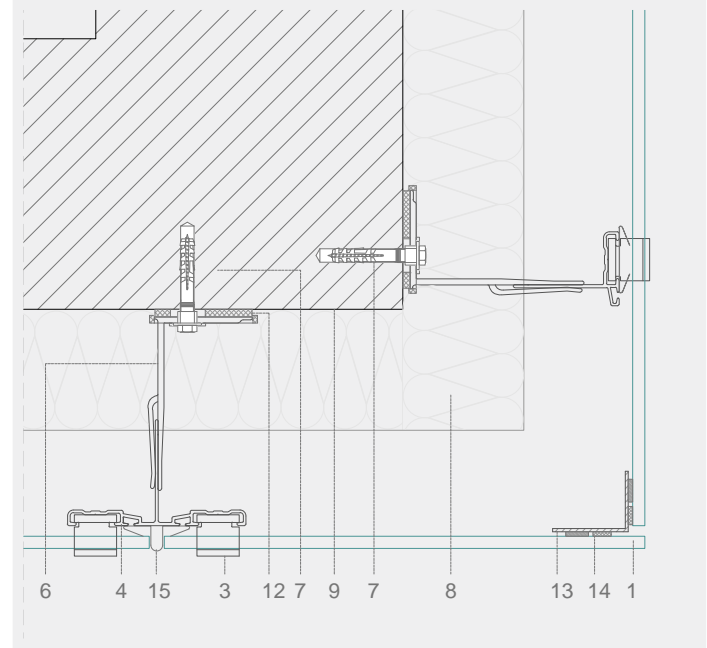


Construction details

Vertical section



Horizontal section



- 1. Dekton
- 2. Stainless Steel Staple
- 3. Pressure Spring
- 4. Vertical Profile
- 5. Self-Propelling Screw
- 6. Fastening bracket

- 7. Mechanical Anchoring
- 8. Thermal Insulation
- 9. Supporting Wall
- 10. Aluminium Jamb
- 11. Padding
- 12. Rupture of

- Thermal Bridge
- 13. Corner Profile in L
- 14. Adhesive
- 15. Profile of Joint

ESC 1:5

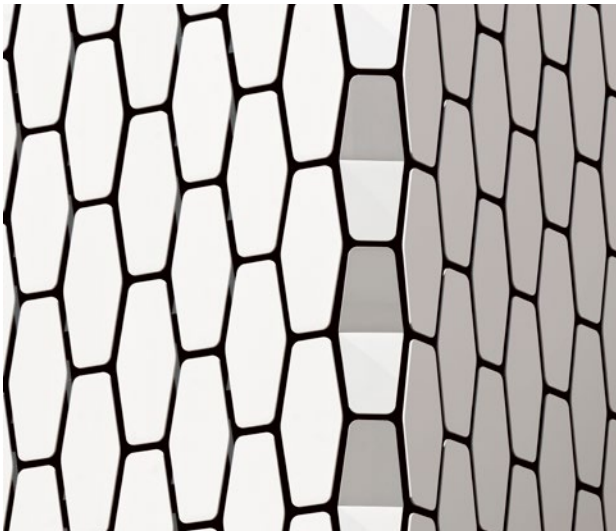


GUNNI & TRENTINO FLAGSHIP STORE
MADRID, SPAIN

DKM

Mixed fixing (mechanical plus chemical) hidden in the groove by the reverse side of the piece

Sculptural projects with high formal value.
For designs with contorting shapes or where
complex different pieces meet, co-existing
alongside inclined, horizontal or vertical pieces.
It is essential to find a system that absorbs
the whole technical and formal burden of the
building, together with a sufficiently adaptable
system for all of these configurations.

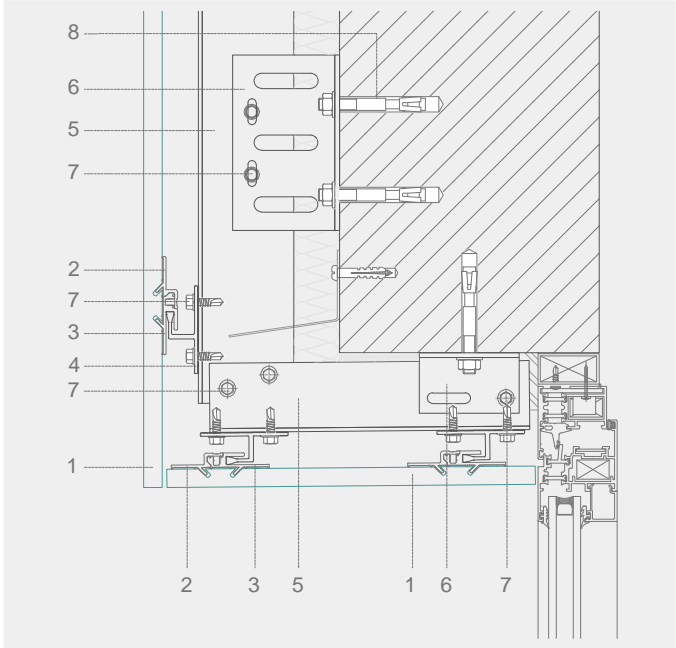


DKM is a system of hybrid fixing (mechanical supported by chemical). It consists of two hanging profiles (upper and lower) that anchor the material chemically and mechanically using adhesive and an inclined or straight groove of a shorter or longer length on the back of the piece.

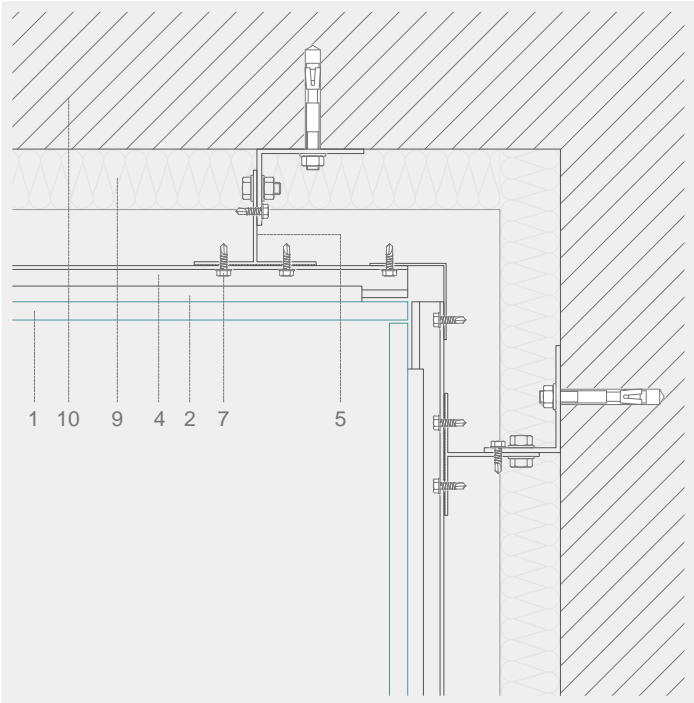
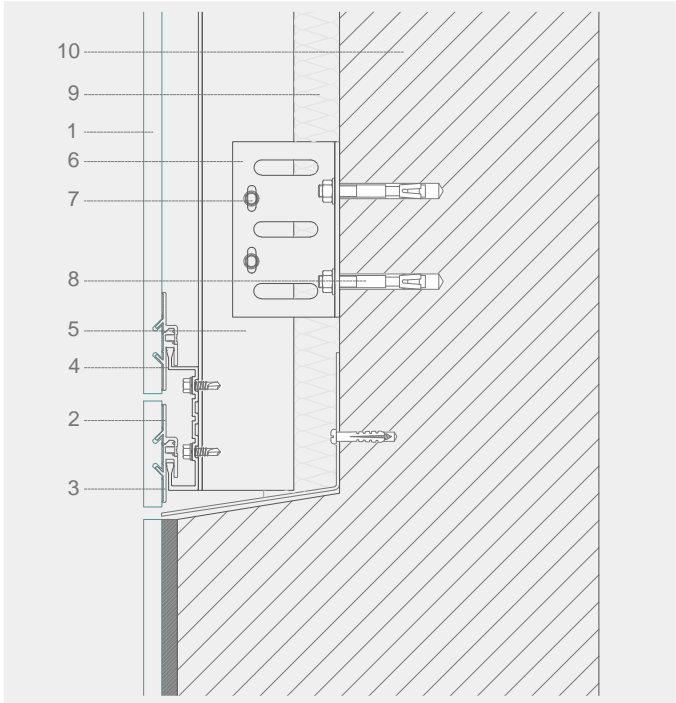
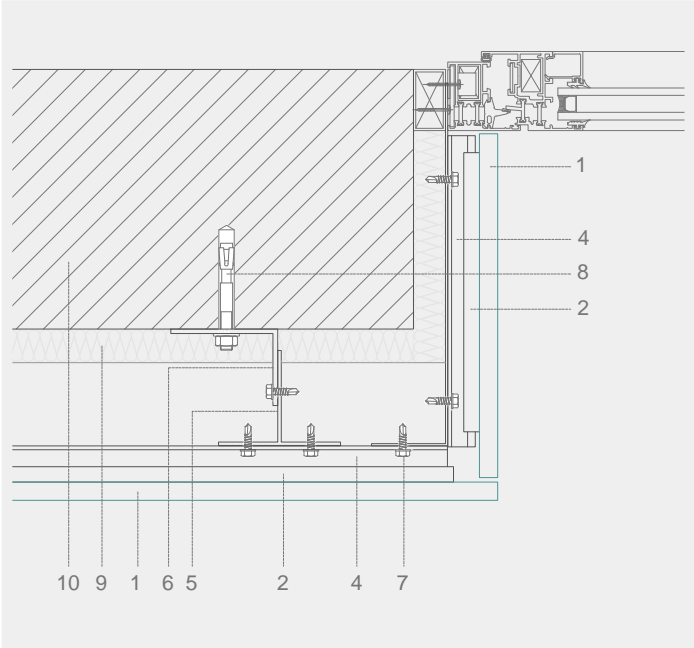
The resulting metallic piece incorporates a hook that is attached to the uprights of the sub-structure, ensuring the stability of the whole against heavy weights. Although it is possible to use different thicknesses, the most used is Dekton 12 mm due to its high versatility, manageability on site, lower weight and high mechanical resistance.

Construction details

Vertical section



Horizontal section



- 1. Dekton
- 2. Upper Hanging Profile
- 3. Lower Hanging Profile
- 4. Single or Double
- 5. Vertical Profile
- 6. Fastening bracket
- 7. Self-Propelling Screw
- 8. Mechanical Anchoring
- 9. Thermal Insulation
- 10. Supporting Wall

ESC 1:5



GEERS EVERGEM JEWELLERY. BELGIUM.

DKC

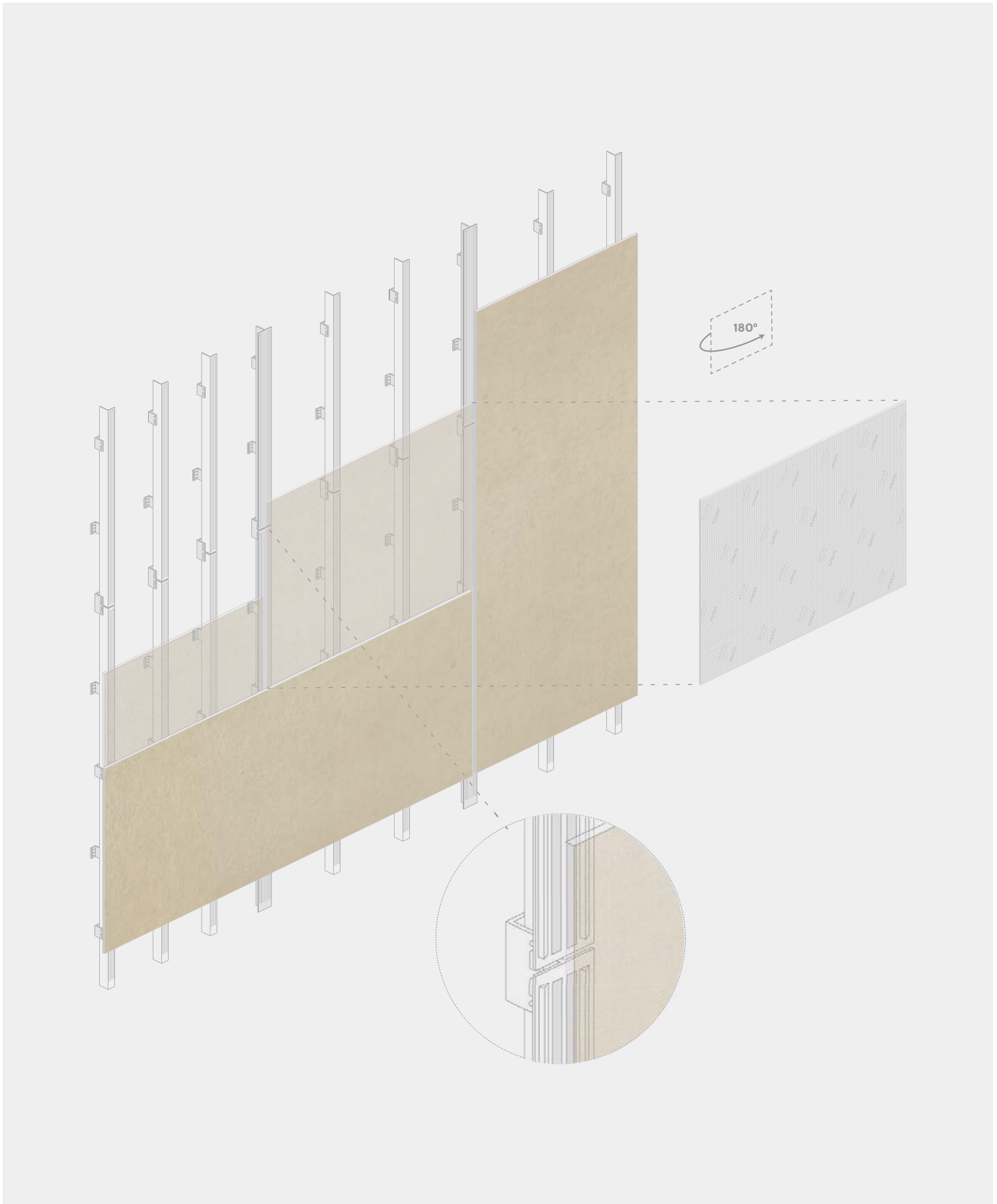
Chemical structural fixing of pieces onto profiles

Projects that adapt to change. New constructions and renovated buildings alike are often required to adapt to socio-economic changes, new uses or, simply, to preserve the formal limits of pre-existing structures or unexpected shapes of the plot. DKC is a completely chemical system of fixing,



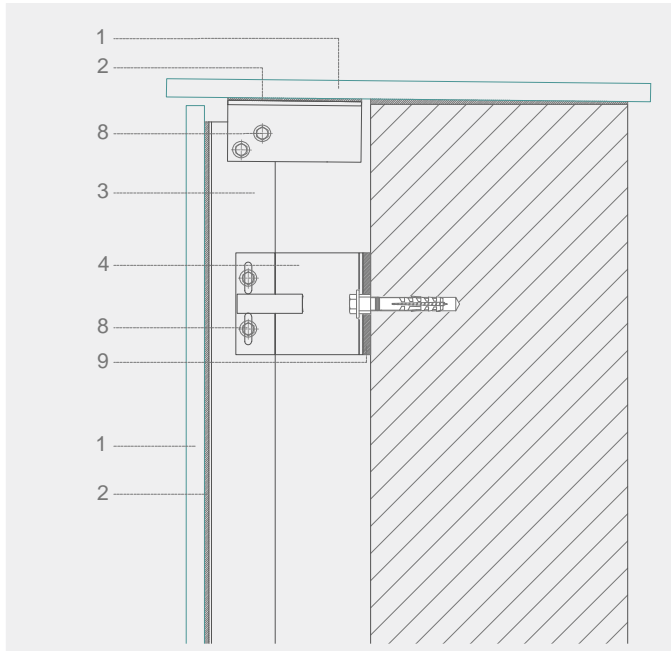
A multitude of formats can be used and designed, including pieces that are pre-assembled in the factory. This system allows for a range of thicknesses, with 8 mm pieces being popular for use in refurbishment and redesigns

which permits pieces to be fixed directly onto the supporting sub-structure using structural bonding, avoiding any machining of the piece. Using a profile, two double-sided lengths of tape are placed in the centre while being added to the edge of the profile. During assembly, the double-sided tape holds the piece while the bonding sets.

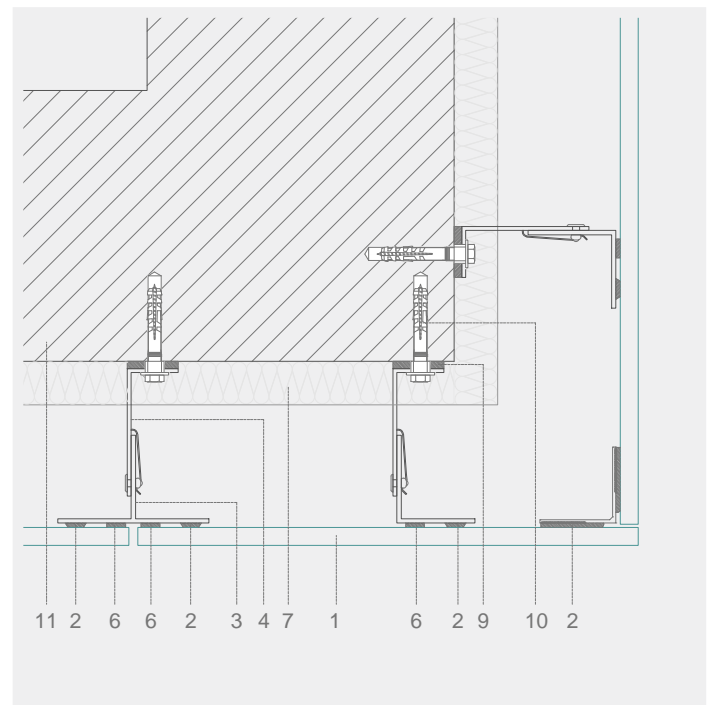
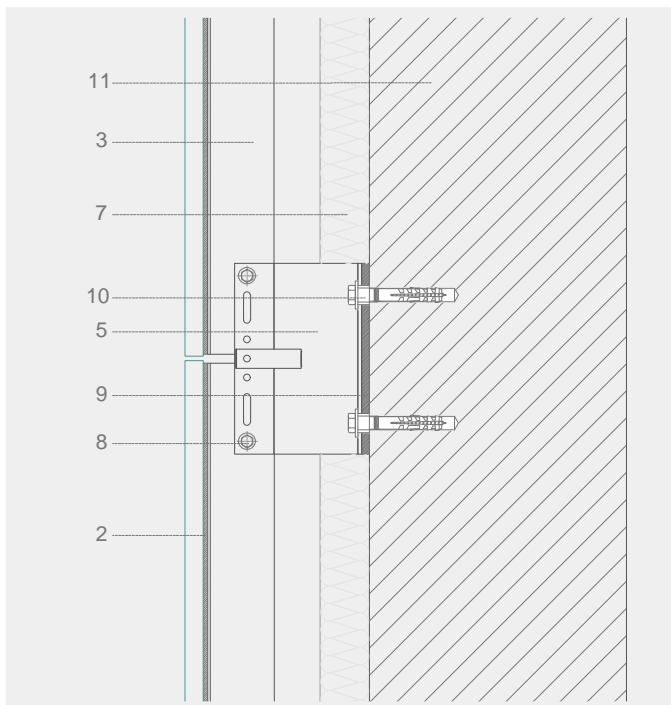
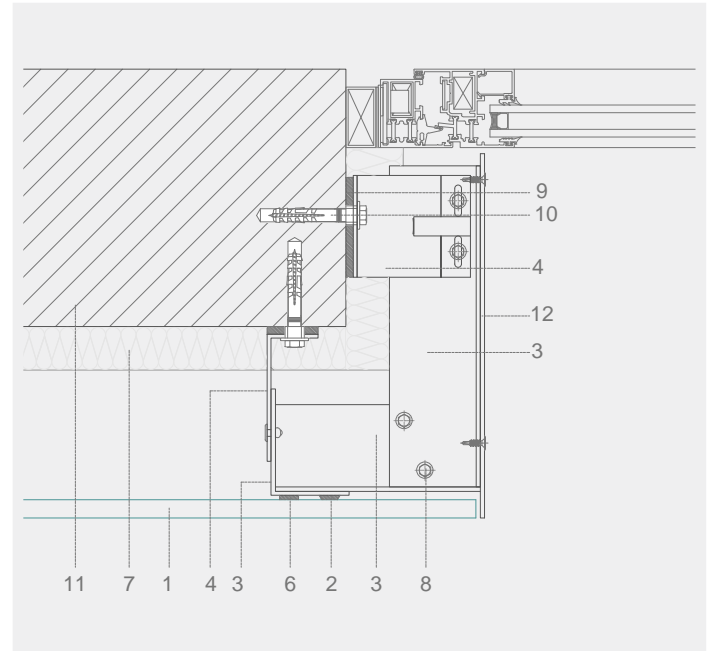


Construction details

Vertical section



Horizontal section



- | | | |
|------------------------|------------------------------|--------------------------|
| 1. Dekton | 6. Double-Sided Tape | 10. Mechanical Anchoring |
| 2. Adhesive | 7. Thermal Insulation | 11. Supporting Wall |
| 3. Vertical Profile | 8. Self-propelled Screw | 12. Aluminium Jamb |
| 4. Secondary Separator | 9. Rupture of Thermal Bridge | |
| 5. Fastening bracket | | |

ESC:1:5

DKB

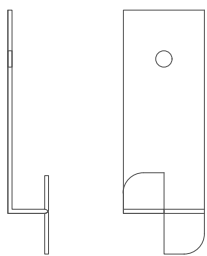
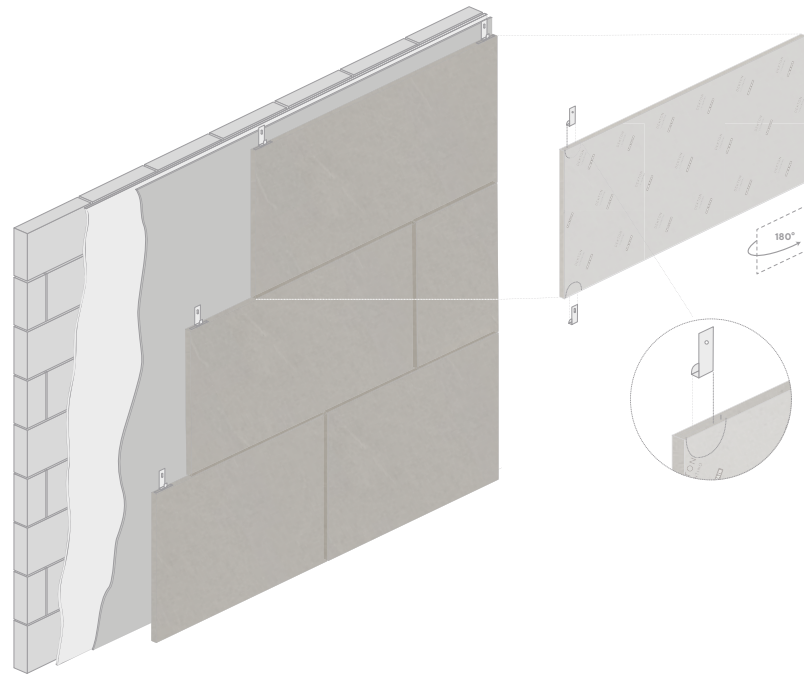
Pieces are fixed directly to the enclosure

Projects with a multitude of applications. There are designs that seek harmony between all the parts of the whole. Façades, terraces, structure, surfaces... all with a single aesthetic and a single material that provides a uniform covering for every surface.

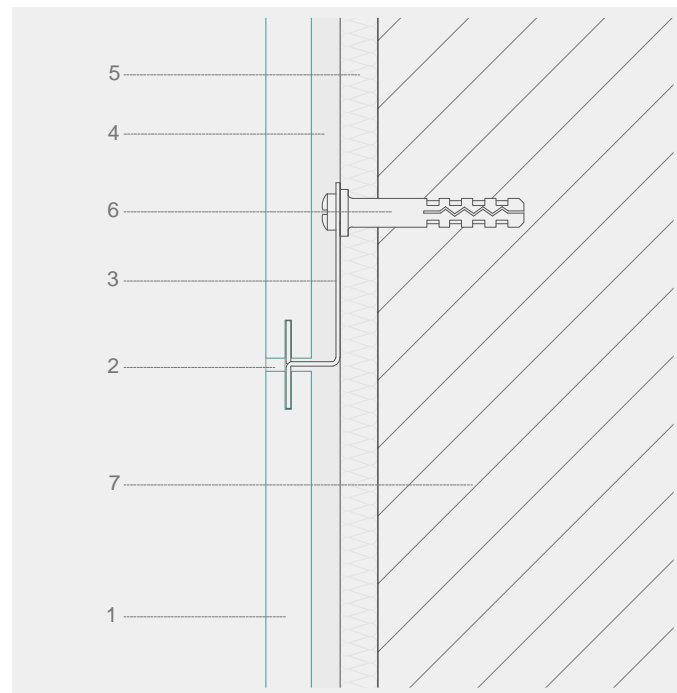
The DKB system is a fixed façade system, not limited by formats and where the usual thickness is 8 mm.

Each piece is applied directly to the enclosure, thanks to a concrete bonding layer applied using the double pasting method on the support and back of the piece, leaving horizontal and vertical joints of minimum 3 mm.

As a general rule, we recommend using hidden safety staples at intervals, making a groove at intervals on the edge of the piece and always following the applicable local regulations for each project



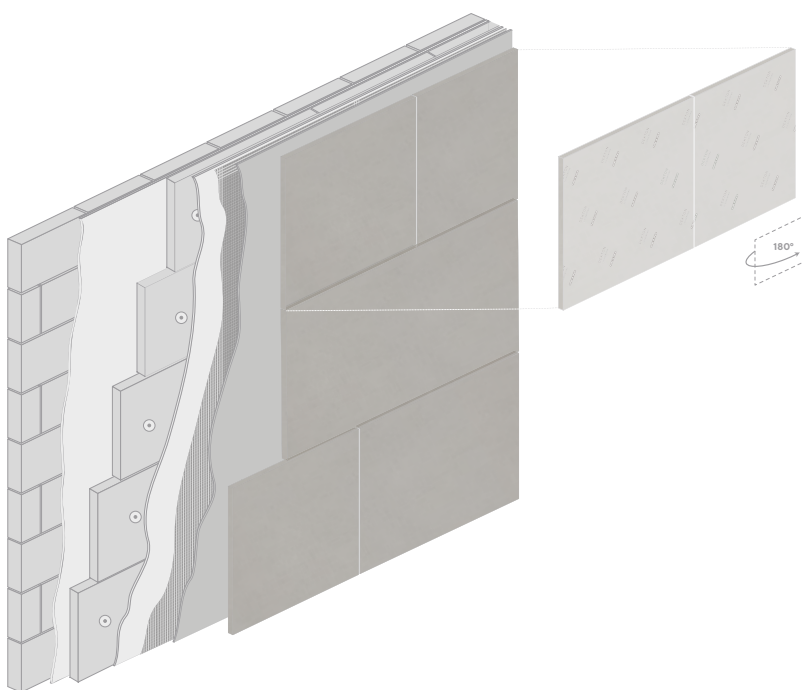
1. Dekton
2. Grout
3. Hidden Staple
4. Concrete Bonding
5. Layer of Mortar
6. Mechanical Anchoring
7. Wall



ESC 1:5

DKS

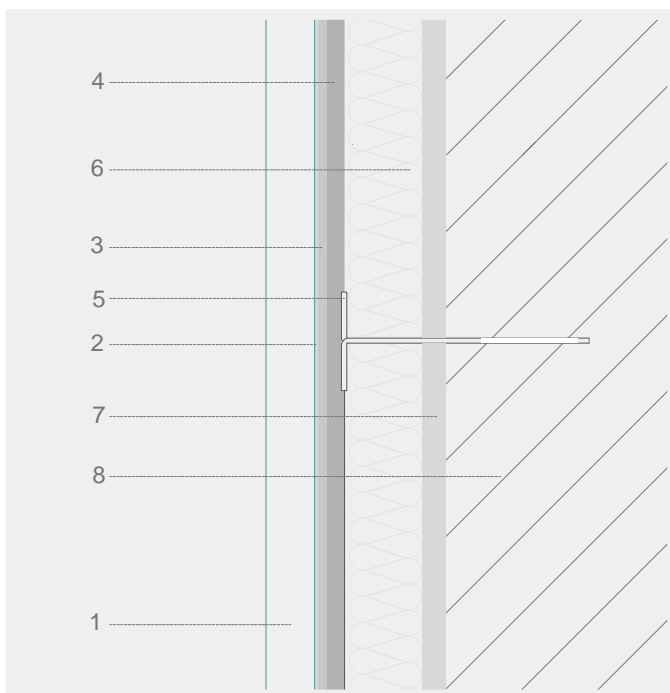
Fixing of pieces onto an external thermal insulation system (ETIS)



Highly energy-efficient projects. In our fast-moving world, homes undergo multiple refurbishments for aesthetic and decorative reasons as well as to create warmer indoor environments.

The DKS system is an ETICS (External Thermal Insulation Composite System) finishing solution.

On a completed ETICS that is ready to be finished with cladding, Dekton is applied using a suitable cement-based adhesive. Because the pieces are adhered to the finished reinforced layer of the insulation system, there is a limit to the weight and format, which must be indicated by the ETICS supplier. The product and application instructions of the ETICS supplier must be followed to fully guarantee the application.



1. Dekton
2. Mortar grout
3. Concrete bonding
4. Finish reinforced with double mesh
5. Mechanical fixing of insulation
6. Thermal insulation
7. Bonding mortar layer
8. Supporting Wall

ESC 1:5

Types of corner joints

Open Exterior Corner

Open exterior corner



Open exterior corner with hidden profile.



Open exterior corner with visible profile.



Corner with overlap

Exterior corner with overlap.



Open exterior corner with overlap and hidden profile



Bevelled corner

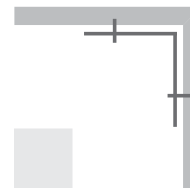
Exterior bevelled corner



Open exterior bevelled corner with hidden profile

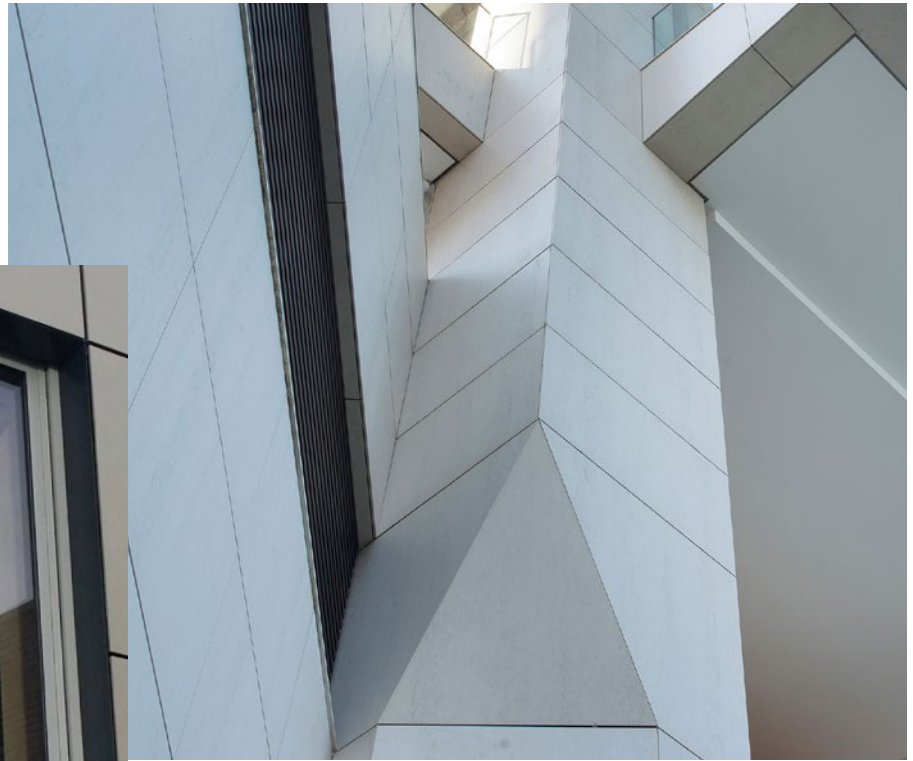


IntegralOpen exterior bevelled corner

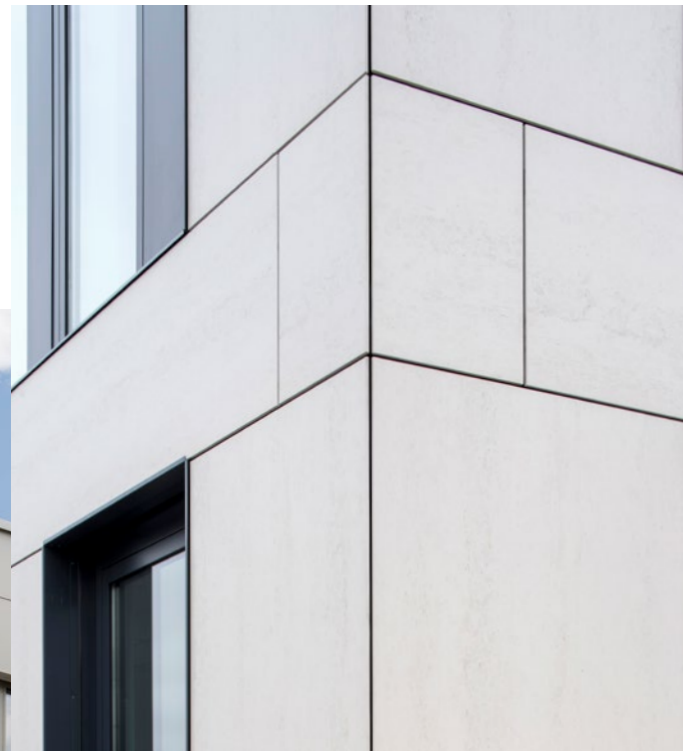




My Fathers Heart. Sheffield. (UK.)



Cap Ferrat Building. Rio de Janeiro, Brazil



Shittethelm Office Building (Germany)



Erlangen Hospital (Germany)

References

Gunni & Trentino Flagship Store

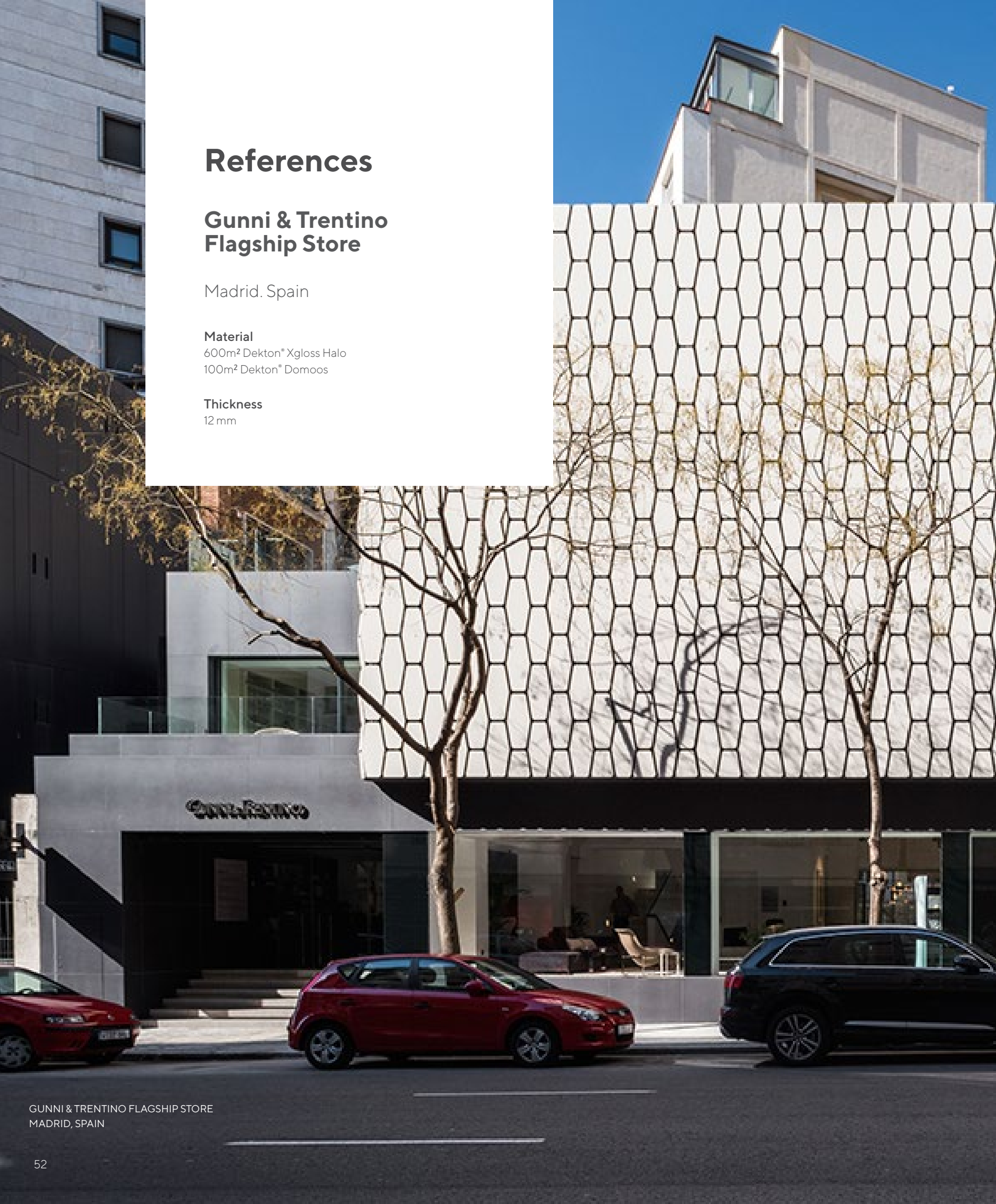
Madrid. Spain

Material

600m² Dekton® Xgloss Halo
100m² Dekton® Domoos

Thickness

12 mm





ToHa by Ron Arad and Avner Yashar

Tel Aviv, Israel

Material

28,000 m² of Dekton®

Facade system

DKT

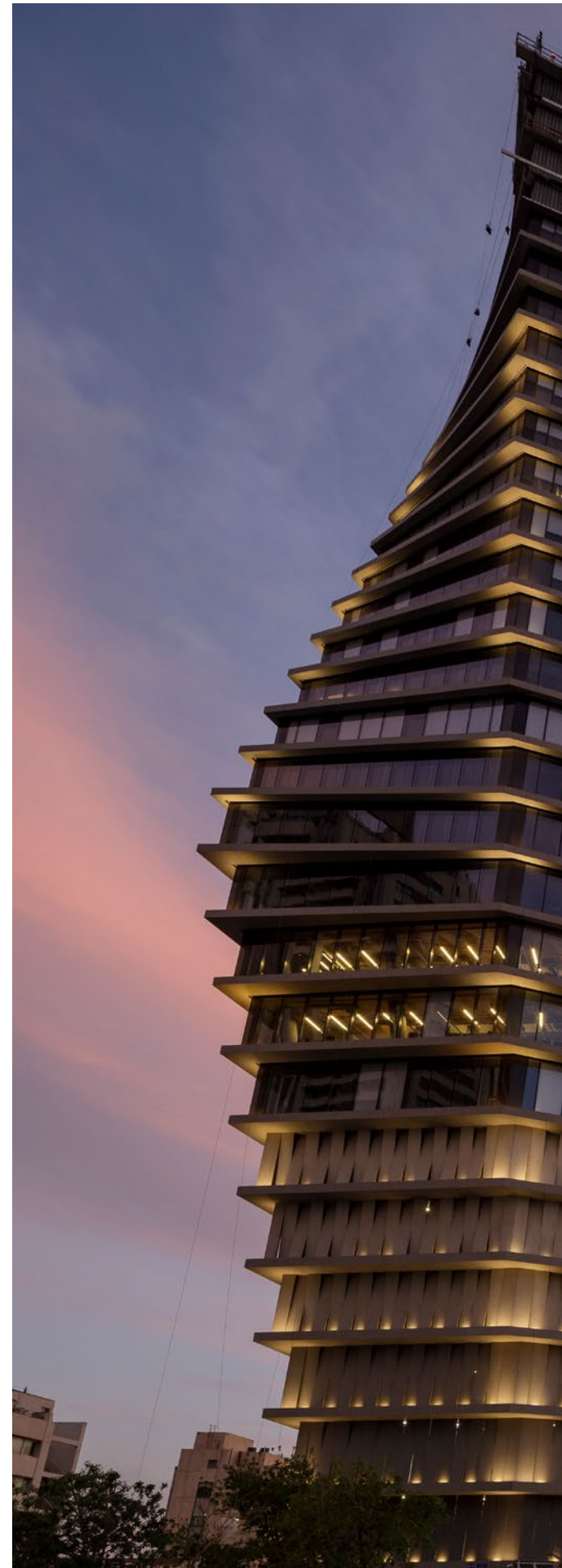
Thickness

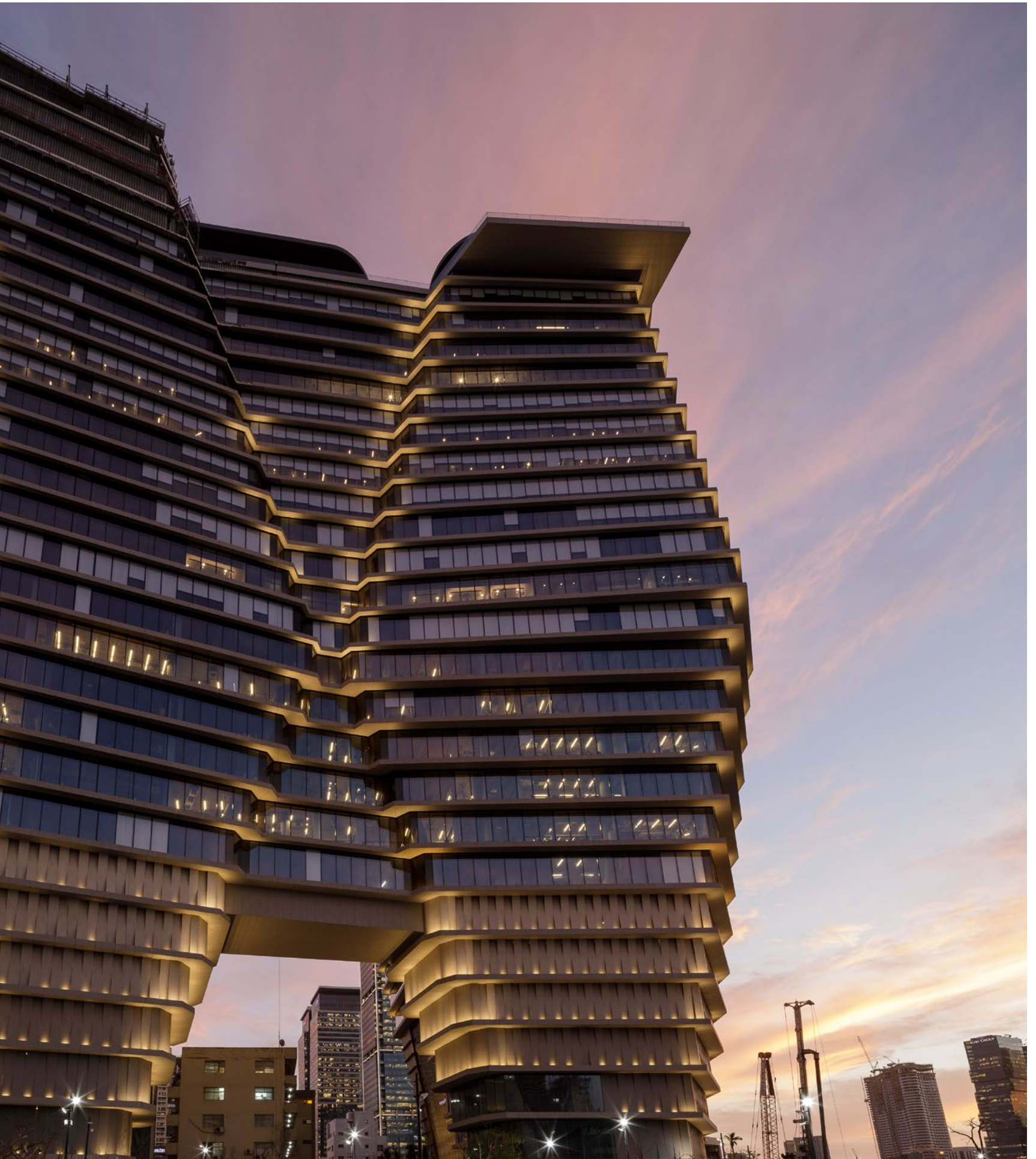
12 mm

For the ToHa building project in Tel Aviv, Israel, over 28,000 m² of Dekton® by Cosentino has been used to clad the façade, flooring, lifts, ceilings and interior partitions.

Located in the centre of Tel Aviv at the junction of two shopping streets, the ToHa building reaches 29 stories high. Its unique, faceted profile, inspired by the geometry of an iceberg, was designed by Ron Arad together with Avner Yashar's local team to house an office complex that includes a public garden, viewing point and restaurant.

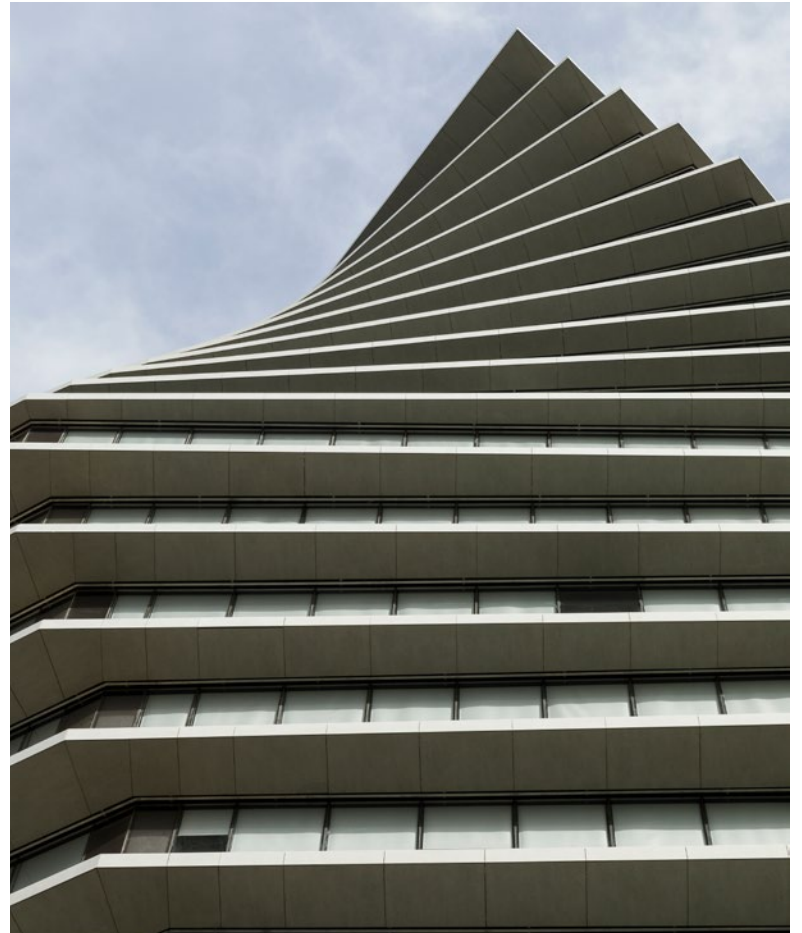
Over 28,000 m² of Dekton® by Cosentino was used to clad the building's façade, flooring, elevators, ceilings and interior partitions. The pieces, formed by more than 10,000 different types, were manufactured and cut at Cosentino's headquarters in Cantoria (Almeria, Spain) and transported by ship to Israel.





Architectural and decorative aspect of the project

A key strategic focus of the project was to reduce the built surface area at street level to create a large garden area, improving the quality of the surrounding area for the public. As a result, the building rises up on two huge legs that widen progressively, framing a twisted profile.



Geometrically versatile Dekton® adapts to this formal complexity with precision thanks to its infinite range of formats, from minimal thickness to maximum surface areas.

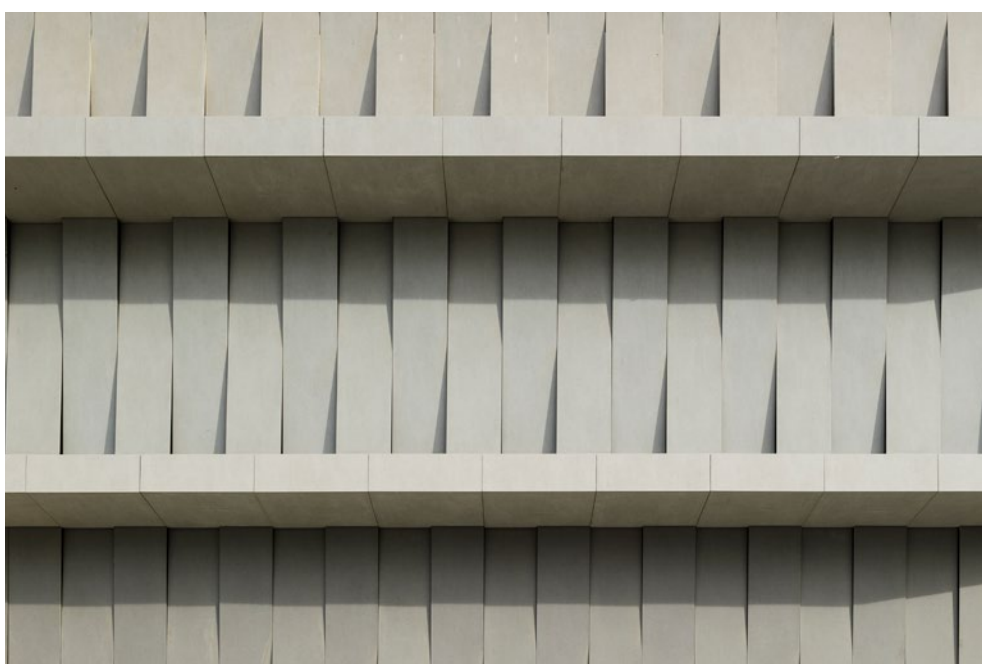
On the intermediate floors, the broken perimeter of the concrete slabs is clad with panels 12 millimetres thick and up to two metres wide which, thanks to minutely accurate cutting, define the vertexes and edges exactly to create an image of perfection.



From a functional point of view, this ambitious project turns the traditional layout of an office block on its head, locating the facilities on the ground floor to free up space at the top. This way, the upper levels can be dedicated to leisure use and the offices are distributed from the seventh floor and up, optimizing access to natural light and views.

The technical foundations are clad using a unique ventilated facade system that alternates the orientation of intersecting Dekton® panels.

This application allows for the passage of air between the large-format (320 x 70 cm) plates and creates a uniform frontage that gives texture and depth to the elevation. Cosentino also offers the opportunity to custom-make a personalized palette of six colours, based on the Strato model, that create a progressive colour gradation from the lower part upwards.





Inside, a huge 30-metre atrium acts as a vestibule and meeting point. The offices face outwards, through a glass facade, and inwards towards the central patio lit by a large light well.

Finishes have been carefully chosen to create a comfortable workplace and coherent corporate image. The possibility to produce large-format Dekton pieces for floors, walls and ceilings allows the number of joints to be reduced and the sense of continuity to be maximized.





Project details

Name: ToHa

Location: Tel Aviv, Israel

End date: 2019

Architecture: Arad Architects, Yashar Architects

Collaborators: Buro Happold Engineering, Israel David Engineering (Consultant structural engineer)

Client: Gav-Yam Amot Totseret Ha-Aretz

Cosentino materials

Application: Roof

Material: Dekton® by Cosentino

Colour: Strato

Thickness 4 mm

Quantity: 1,800 m²

Format: 140×30

Application: Flooring

Material: Dekton® by Cosentino

Colour: Soke, Sirius, Strato

Thickness: 8 mm, 20 mm

Quantity: 3,500 m²

Format: Various: 320×144, 140×80, 80×170

Application: interior walls/façade

Material: Dekton® by Cosentino

Colour: Zenith, Sirius, Kadum, Spectra, Strato

Thickness: 8 mm

Quantity: 2,000 m²

Format: Various: 80×270, 70×300

Application: Ventilated façade

Material: Dekton® by Cosentino

Colour: Strato, Spectra

Customised colours: Totzeret1, Totzeret2, Totzeret3, Totzeret4, Totzeret5, Totzeret6

Thickness: 12 mm

Quantity: 20,000 m²

Format: various

Photography credits: Fernando Alda

Cap Ferrat by Juan Carlos Di Filippo

Rio de Janeiro, Brazil

Material

3,800 m² Dekton®

Façade system

DKT1

Thickness

12 mm

For the refurbished façade of the iconic Cap Ferrat building, 3,800 m² of the ultracompact Dekton® by Cosentino surface was used.

Cap Ferrat is an iconic residential building located on exclusive Avenida Vieira Souto in Ipanema, Rio de Janeiro. Built in 1976, this 20-story landmark of the Ipanema district has a surface area of 2,000 m² and is home to apartments, duplexes, garages and communal areas.

Forty years after it was built, the tower underwent a project between 2013 and 2016 to refurbish the cladding of its balconies. These had deteriorated due to galvanic corrosion of the aluminium railings, which had caused the original granite cladding of the perimeter girders of the tower's six balconies to crack.

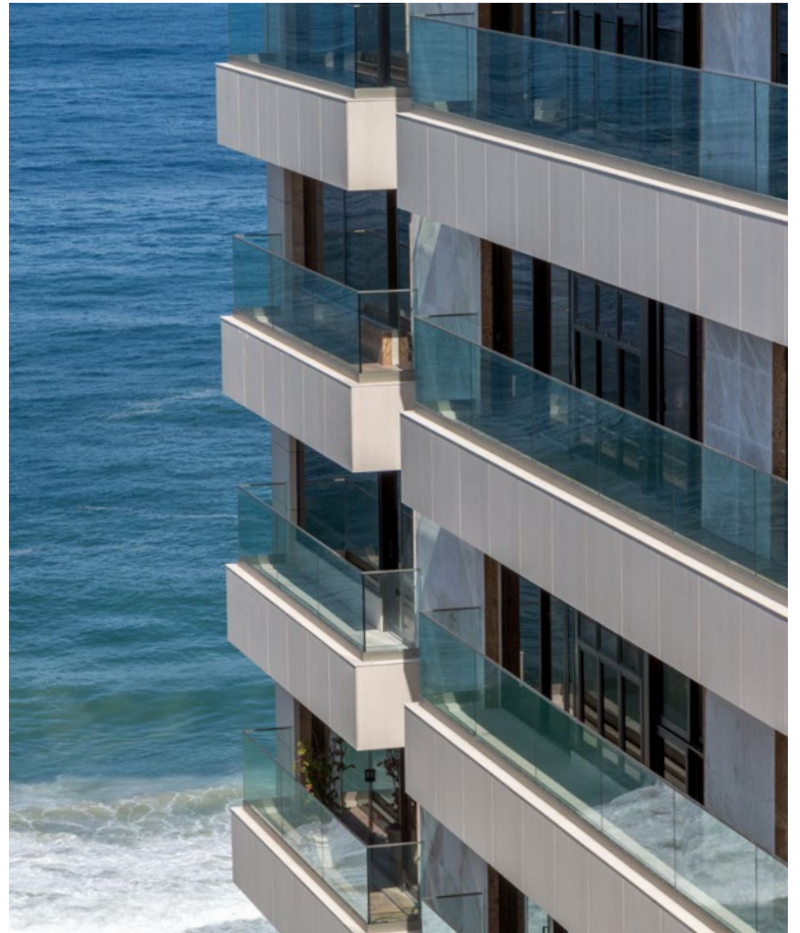
Having analysed the performance of various materials, the architectural studio in charge of the project, Di Filippo Arquitectura, identified Dekton as meeting all of the essential requirements.





REFERENCES

The biggest challenge faced by the project team was to find a new cladding that could be installed over the original material and would entail a maximum load of 90 kilograms per square metre. In addition, due to the building's proximity to the sea, the chosen material needed to match the exterior aesthetic with a subtle tone that blended into the surroundings as well as having mechanical properties to withstand the environmental damage that is common to such locations.



Di Filippo Architettura chose Dekton® by Cosentino for the façade for various reasons: it represented just 50% of the permitted load for the material, it can be manufactured in large format, bespoke slabs (3.2 m x 1.44 m), the precision cutting of pieces, its optimal performance against sand and saltwater erosion from the beach, and its other exceptional qualities such as its high resistance to ultraviolet rays, its colour stability and high resistance to stains.

“When we decided to maintain the existing cladding, we were faced with the need to choose a cladding material with very special characteristics: it must have minimal porosity to withstand the conditions of a coastal environment, it must be lightweight but have generous dimensions, and it must be able to be installed using a system of stainless steel fixings.

Last but not least, we needed a material with a low level of solar radiation absorption to meet the characteristics of the location, as well as being available in a colour that matched the local sand, as Cap Ferrat is located opposite Ipanema beach.

Having analysed various materials, the ultracompact surface Dekton® by Cosentino was chosen. It fulfilled all the requirements of the project.”

Architect: Juan Carlos Di Filippo.





The 12 mm-thick pieces were cut and the exact number, dimensions and location of their perforations made at the Cosentino factory in Cantoria, Almería, before being shipped to Brazil. The perforations made were the result of a ground-breaking fixing technique developed for this project by the company GMM Anchor Systems, supported throughout by the Cosentino engineering department. For the anchoring, Keil pieces provided by Cosentino were used. Other pieces and metal accessories were produced by GMM.

The Dekton® colour chosen for the façade's cladding was the cream tone Danae, for its elegance and similarity to the colour of the sand on the beach.

Project details

Name: Cap Ferrat Building

Address/location: Av. Vieira Souto, 564 - Ipanema, Rio de Janeiro, Brazil

Project dates: 2013-2016

Duration of works: 12 months

Architecture studio / architects: Di Filippo Arquitectura, Juan Carlos Di Filippo Architect - Universidad Nacional de Rosario-Argentina

Collaborators: Gabriela de Lana, Carolina Luz, Renata Martinho Marina Accioly

Construction / Cladding installation company: Gmm-Anchor Systems, Sa Martins Puertas de Correr, Q-Railing Barandas

Cosentino materials:

Application: Façade

Material: Dekton® by Cosentino

Colour: Danae

Thickness: 12 mm

Quantity: 3,800 m²

Format: Made to measure

Installation system: Keil peg, metallic insert







Armonk Professional Center

New York City, USA

Material
126m² Dekton® Trilium

Facade system
DKM

Thickness
12 mm

Rafa Nadal Academy by Movistar

Manacor, Majorca, Spain

Material

Dekton® Strato, Ventus, Zenith, Spectra, Trilium,
Keon, Domoos and Customised Blue.

Facade system

DKM

Thickness

8 mm, 12 mm and 20 mm





RAFA NADAL
ACADEMY
BY  movistar



Cajamar Building

Almería, Spain

Material

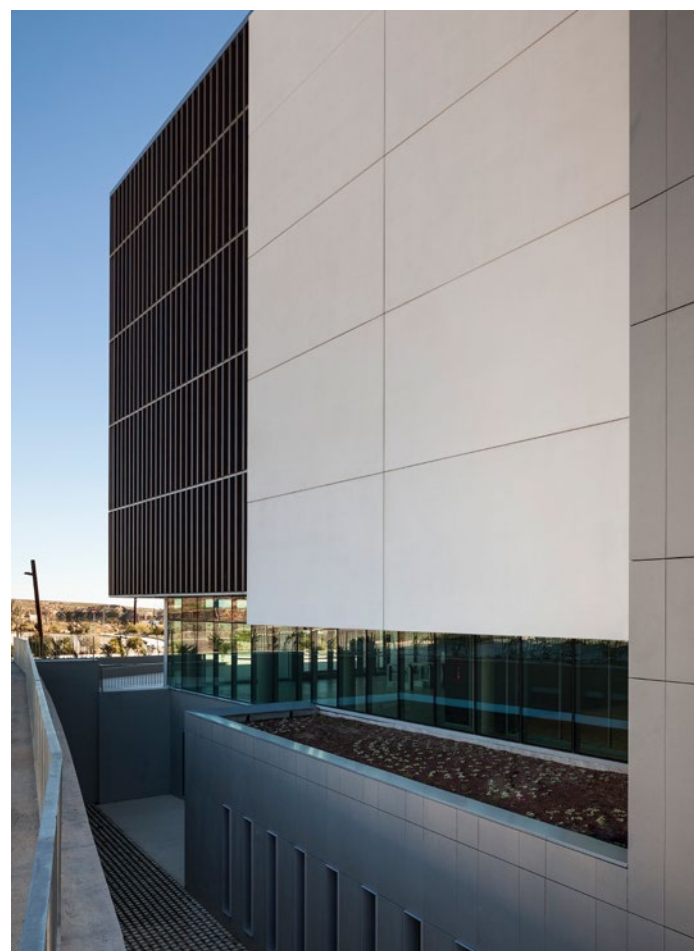
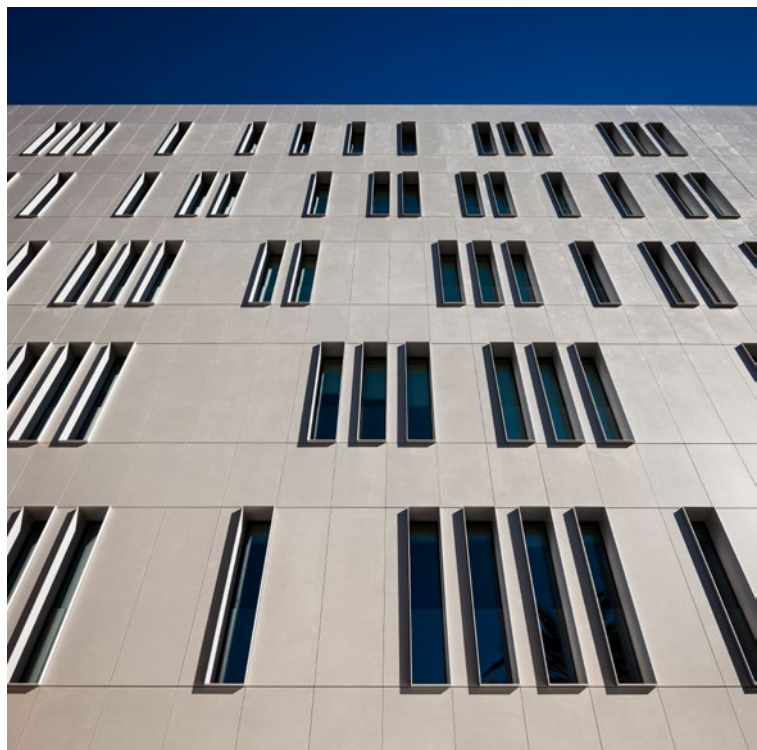
2,000 m² Dekton® Sirocco

Facade system

DKM

Thickness

12 mm





Porsche Design Boutique

Illinois. USA

Material

Dekton® Domoos format 320cm x 144cm

2,000 m² Dekton® Sirocco

DKT1

Thickness

12 mm







Skallan Private Villa

Sweden

Material
500m² Dekton® Kadum

Facade system
DKM

Thickness
12 mm





Schaffhauserstrasse

Zurich, Switzerland

Material

550m² Dekton® Sirius

Facade system

DKT 4

Thickness

20 mm







MK8 – Kap West

Munich. Germany

Material

13,000 m² Dekton® Keon

Facade system

DKT1

Thickness

12 mm



Valdebebas 127

Madrid, Spain

Material

7,600m² Dekton® Warm (customised) and Korus

Facade system

DKT2

Thickness

12 mm



Attachments

Certifications

Dekton® is internationally certified to guarantee maximum safety and protection.

Certification for facades

ETA 14/0413



European Technical Evaluation Certificate issued in accordance with EU Regulation 305/2011 for Dekton as exterior cladding in ventilated facades.

NOA*



Certificate issued for the Dekton ultracompact facade system in accordance with the applicable regulations on construction materials inspected by Miami-Dade County.

BBA



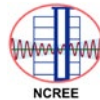
Technical certificate issued for the Dekton cladding panels for ventilated facade systems for their use in the facades of new or existing buildings.

CSTB



Reports on seismic testing issued by the Scientific and Technical Centre for Building in France, CSTB according to its acronym in French.

NCREE Earthquakes



Reports on seismic testing issued by the National Center for Research on Earthquake Engineering in Taiwan (NCREE), a seismic simulation laboratory.

Other product certifications

DoP



HPD



VOC GreenGuard Gold



VOC Eurofins



EPD



NSF



VOC Greenguard



Kosher



*In process

Technical characteristics

Dekton®

According to standard EN-14411

TEST STANDARD	DECISION	UNIT	FAMILY I	FAMILY II	FAMILY III	FAMILY IV
Resistance to flexion and breaking load IN ISO 10545-4	Average flexion resistance	N/mm ²	46	45	55	46
	Average breaking load	N	2,548	2,313	2,356	2,568
	Average breakage force	N	14,966	13,559	13,818	15,620
Water absorption, open porosity and densities IN ISO 10545-3	Absorption of water by boiling	%	0	0.1	0.1	0.1
	Absorption of water by vacuum	%	0.1	0.1	0.1	0.1
	Open porosity	%	0.2	0.2	0.2	0.2
	Apparent relative density	g/cm ³	2.51	2.61	2.53	2.44
	Apparent density	g/cm ³	2.50	2.61	2.52	2.44
Deep-wear resistance IN ISO 10545-6	Abraded volume	mm ³	125	106	115	119
Determination of dimensions and surface quality IN ISO 10545-2	Length and width	%	0.11/-0.18	0.04/-0.08	0.04/-0.04	0.02/-0.02
	Thickness	%	0.50/-0.50	4.95/-2.20	0.53/-0.53	-1
	Straightness of sides	%	0.01/-0.01	0.03/-0.03	0.01/-0.03	0.02/-0.02
	Orthogonality	%	0.07/-0.16	0.04/-0.09	0.21/-0.21	0.08/-0.08
	Centre curvature	%	0.04/-0.08	-0.06	-0.06	-0.07
	Edge curvature	%	0.06/-0.06	0.02/-0.04	0.02/-0.04	0.02/-0.02
	Warping	%	-0.11	-0.07	-0.06	-0.04
	Surface quality (Tiles by default)	%	100	100	100	100
Determination of impact resistance IN ISO 10545-5	Average coefficient of restitution	-	0.85	0.85	0.85	0.92
Determination of linear thermal expansion IN ISO 10545-8	Expansion between 30-100°	°C ⁻¹	6.5·10 ⁻⁶	5.1·10 ⁻⁶	6.3·10 ⁻⁶	5.8·10 ⁻⁶
Determination of thermal shock resistance IN ISO 10545-9	Damage	-	Pass/no damage	Pass/no damage	Pass/no damage	Pass/no damage
Determination of expansion from moisture IN ISO 10545-10	Maximum expansion	mm/m	0.1	0.1	0.1	0.1
	Medium expansion	mm/m	0.0	0.0	0.0	0.1
Determination of freeze resistance IN ISO 10545-13	Damage	-	Pass/no damage	Pass/no damage	Pass/no damage	Pass/no damage
	CINH ₂ /Cleaning products	Class	A (no damage)	A (no damage)	A (no damage)	
	Bleach/Salts for pools	Class	A (no damage)	A (no damage)	A (no damage)	
	HCl (3% v/v)	Class	LA (no damage)	LA (no damage)	LA (no damage)	
	Citric Acid (100g/l)	Class	LA (no damage)	LA (no damage)	LA (no damage)	
	KOH (30 g/l)	Class	HA (no damage)	HA (no damage)	HA (no damage)	
	HCl (18%)	Class	HA (no damage)	HA (no damage)	HA (no damage)	
	Lactic Acid (5%)	Class	HA (no damage)	HA (no damage)	HA (no damage)	
	KOH (100 g/l)	Class	HA (no damage)	HA (no damage)	HA (no damage)	
Determination of stain resistance IN ISO 10545-14	Green staining agent	Class	5	5	5	5
	Red staining agent	Class	-	-	-	-
	Iodine (solution)	Class	5	5	5	5
	Olive oil	Class	5	5	5	5

Family I: (Aldem, Ananke, Borea, Bromo, Domoos, Fossil, Galema, Kadum, Kelya, Keon, Keranium, Kira, Korus, Kovik, Kreta, Laos, Milar, Odin, Orix, Sirius, Sirocco, Soke, Strato, Valterra, Vegha, Ventus, Vera). / **Family II:** (Ariane, Aura, Aura15, Entzo, Kairos, Lunar, Nayla, Nilium, Opera, Portum, Zenith)
Family III: (Aged Timber, Bento, Blanc Concrete, Danae, Dove, Edora, Gada, Irok, Makai, Popular Dark, Popular Warm, Sarey, Sasea, Sterling) / **Family IV:** (Radium, Trilium)

Technical characteristics

Dekton® XGloss

According to standard EN-14411

TEST STANDARD	DECISION	UNIT	FAMILY I	FAMILY II	FAMILY III
Resistance to flexion and breaking load IN ISO 10545-4	Average flexion resistance	N/mm ²	46	45	55
	Average breaking load	N	2,548	2,313	2,356
	Average breakage force	N	14,966	13,559	13,818
Water absorption, open porosity and densities IN ISO 10545-3	Absorption of water by boiling	%	0	0.1	*
	Absorption of water by vacuum	%	0.1	0.1	*
	Open porosity	%	0.2	0.2	*
	Apparent relative density	g/cm ³	2.51	2.61	*
	Apparent density	g/cm ³	2.50	2.61	*
Deep-Wear Resistance IN ISO 10545-6	Abraded volume	mm ³	125	106	*
Determination of dimensions and surface quality IN ISO 10545-2	Length and width	%	0.11/-0.18	0.04/-0.08	*
	Thickness	%	0.50/-0.50	4.95/-2.20	*
	Straightness of sides	%	0.01/-0.01	0.03/-0.03	*
	Orthogonality	%	0.07/-0.16	0.04/-0.09	*
	Centre curvature	%	0.04/-0.08	-0.06	*
	Edge curvature	%	0.06/-0.06	0.02/-0.04	*
	Warping	%	-0.11	-0.07	*
	Surface quality (Tiles by default)	%	100	100	*
Determination of impact resistance IN ISO 10545-5	Average coefficient of restitution	-	0.85	0.85	0.85
Determination of linear thermal expansion IN ISO 10545-8	Expansion between 30-100°C	°C ⁻¹	6.5 · 10 ⁻⁶	5.1 · 10 ⁻⁶	0.3 · 10 ⁻⁶
Determination of thermal shock resistance IN ISO 10545-9	Damage	-	Pass/no damage	Pass/no damage	Pass/no damage
Determination of expansion from moisture IN ISO 10545-10	Maximum expansion	mm/m	0.1	0.1	0.1
	Medium expansion	mm/m	0.0	0.0	0.0
Determination of freeze resistance IN ISO 10545-12	Damage	-	Pass/no damage	Pass/no damage	Pass/no damage
Determination of chemical resistance IN ISO 10545-13	CINH ₂ /Cleaning products	Class	A (no damage)	A (no damage)	A (no damage)
	Bleach/Salts for pools	Class	A (no damage)	A (no damage)	A (no damage)
	HCl (3% v/v)	Class	LA (no damage)	LA (no damage)	LA (no damage)
	Citric Acid (100g/l)	Class	LA (no damage)	LA (no damage)	LA (no damage)
	HCl (18%)	Class	HA (no damage)	HA (no damage)	HA (no damage)
	Lactic Acid (5%)	Class	HA (no damage)	HA (no damage)	HA (no damage)
Determination of stain resistance IN ISO 10545-14	Green staining agent	Class	5	5	*
	Red staining agent	Class	-	-	*
	Iodine (solution)	Class	5	5	*
	Olive oil	Class	5	5	*

* Test underway

Family I: (Blaze, Korso, Lumina, Manhattan, Sogne, Spectra, Splendor)

Family II: (Bergen, Halo, Fiord, Tundra, Glacier, Natura, Natura18, Olimpo, Vienna)

Family III: (Arga, Qatar, Taga)

Technical characteristics

ASTM characteristics

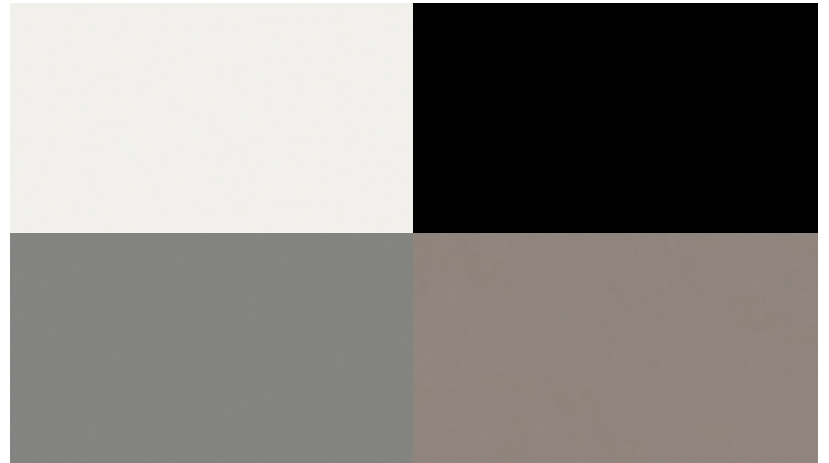
TEST	STANDARD	DECISION	UNIT	FAMILY I	FAMILY II	FAMILY III
Moisture expansion	ASTM C370	Average moisture expansion	%	0.020	0.005	0.004
Resistance to breakage	ASTM C648	Average expansion by breakage	lbf	3.963	4.896	3.932
Flexibility properties	ASTM C674	Average breakage module	psi	10.828	13.997	9.005
(Water absorption, apparent density, porosity)	ASTM C373	Average water absorption	%	0.03 (non-porous)	0.05 (non-porous)	0.01 (non-porous)
Adhesion and coefficient of friction (slip resistance)	ASTM C1028	Dry adhesion and coefficient of friction	-0	0.800	0.770	0.77
		Wet and dry adhesion and coefficient of friction	-0	0.660	0.560	0.69
Resistance to wear (TABER abrasion)	ASTM C501	Average index of resistance to wear		182.23	337	240
Resistant to thermal shock	ASTM C484	Defects	-	Without defects	Without defects	Without defects
Adhesive strength	ASTM C482	Average adhesive strength	psi	423	437	357
Resistance to chemical substances	ASTM C650	Daily cleaning products				
		Acetic acid, 3 % (v/v)	-	Not affected	Not affected	Not affected
		Acetic acid, 10 % (v/v)	-	Not affected	Not affected	Not affected
		Ammonium chloride, 100 g/l	-	Not affected	Not affected	Not affected
		Citric acid solution, 100 g/l	-	Not affected	Not affected	Not affected
		Lactic acid, 5 % (v/v)	-	Not affected	Not affected	Not affected
		Phosphoric acid, 3 % (v/v)	-	Not affected	Not affected	Not affected
		Phosphoric acid, 10 % (v/v)	-	Not affected	Not affected	Not affected
		Sulfamic acid, 30 g/l	-	Not affected	Not affected	Not affected
		Sulfamic acid, 100 g/l	-	Not affected	Not affected	Not affected
		Chemical products for swimming pools	-	Not affected	Not affected	Not affected
		Sodium hypochlorite, 20 mg/l	-	Not affected	Not affected	Not affected
		Acids and bases	-	Not affected	Not affected	Not affected
		Hydrochloric acid solution, 3 %	-	Not affected	Not affected	Not affected
		Hydrochloric acid solution, 18 % (v/v)	-	Not affected	Not affected	Not affected
		Potassium hydroxide, 30 g/l	-	Not affected	Not affected	Not affected
Potassium hydroxide, 100 g/l	-	Not affected	Not affected	Not affected		
Specific density and absorption	ASTM C97	Average percentage absorption of by weight	%	0.020	0.040	0.02
		Average density	lb/ft ²	156	160.63	157.6
Modulus of rupture	ASTM C99	Average condition of rupture in dry conditions	psi	8128	9.042	7.369
		Average condition of rupture in wet conditions	psi	7.490	8.446	7.480
Flexible strength	ASTM C880	Average flexible strength in dry conditions	psi	6.840	3.118	5.858
		Average flexible strength in wet conditions	psi	6.205	4.187	5.119
Resistance to compression	ASTM C170	Average resistance to compression in dry conditions	psi	34.409	>55,000	44.882
		Average resistance to compression in wet conditions	psi	17.823	>55,000	40.165
Resistance to wear	ASTM C1353	Average abrasion index	-	349	349.48	265.8

Colours and Trends

Dekton® features a wide range of colours that are updated every year to anticipate and match market trends.

Explore the whole range of colours and designs, inspired by nature, industrial spaces and minimalist style.

Thanks to its extensive range of colours, Dekton® blends beautifully into any environment.



Solid Collection

Solid colours are timeless and the perfect match for any material. Dekton® colours range from the purest white to the most intense black with everything in between, such as cold grey tones and warm beige or earth tones.

Natural Collection

Nature plays an important role by inspiring us and bringing balance and tranquility to our lives

Dekton® has taken a cue from nature to create a range of natural-looking colours that connect us with the living world.



Chromica Series

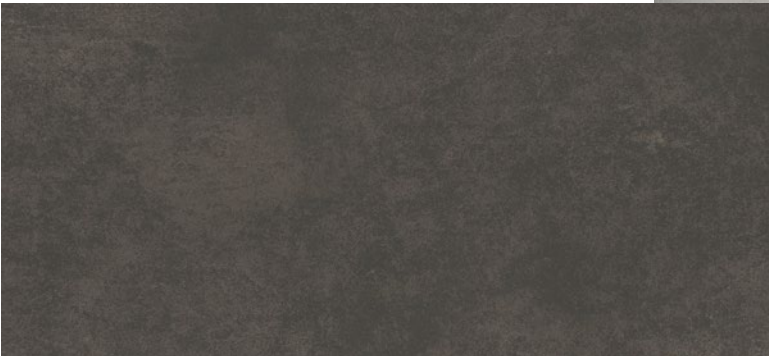
Baltic and Feroe.
Inspired by the colours of nature at her wildest



Industrial Collection

The industrial trend is back and bigger than ever. Cement, iron and bare surfaces are making a comeback in exterior spaces as well as interiors

Dekton® has given the trend its own twist with a collection of surfaces with an urban soul and long-lasting, durable characteristics.

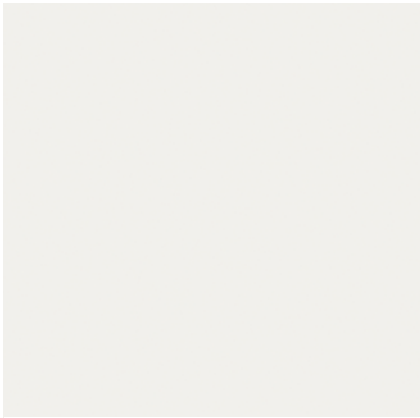


Xgloss is the dazzling Dekton® colour range, with high gloss tones that can withstand even the worst weather conditions.

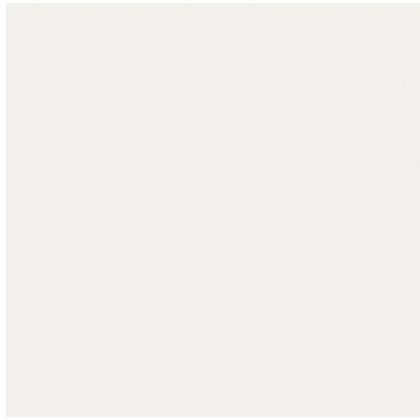
Xgloss Collection



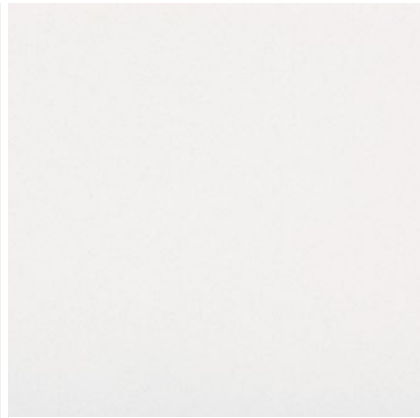
Colour menu



Zenith SOLID Collection



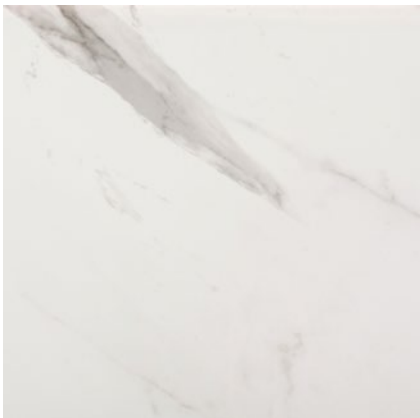
Halo XGLOSS Solid



Nayla NATURAL Collection



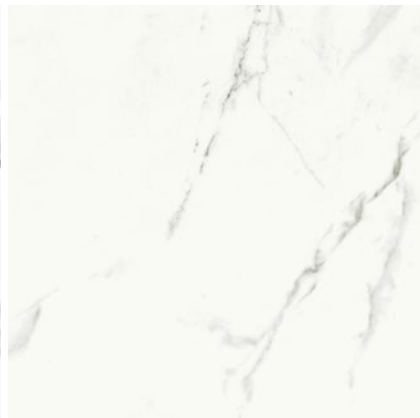
Vienna XGLOSS Basic



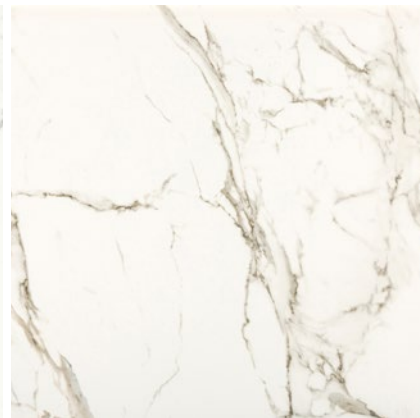
Olimpo STONIKA



Opera NATURAL Collection



Kairos NATURAL Collection



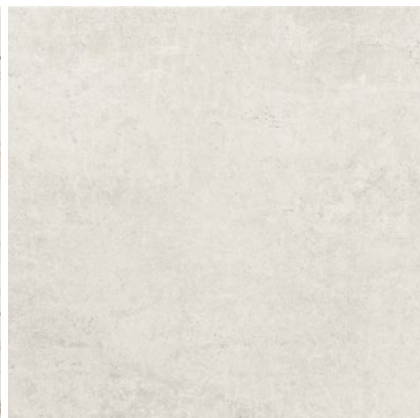
Entzo NATURAL Collection



Blanc Concrete TECH Collection



Makai WILD Collection



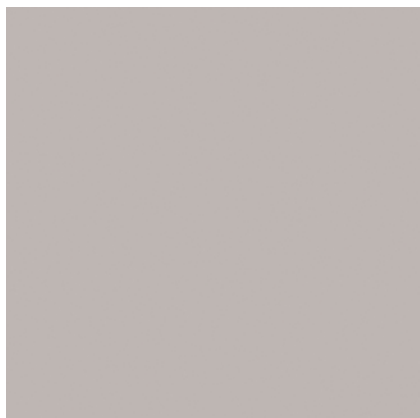
Lunar INDUSTRIAL Collection



Gada NATURAL Collection



Taga STONIKA



Splendor XGLOSS Solid



Keon TECH Collection



Kovik NATURAL Collection

Ultra Texture Ultra Matt Velvet Texture XGloss Eco Dekton Thickness 3Cm



Glacier XGLOSS Natural



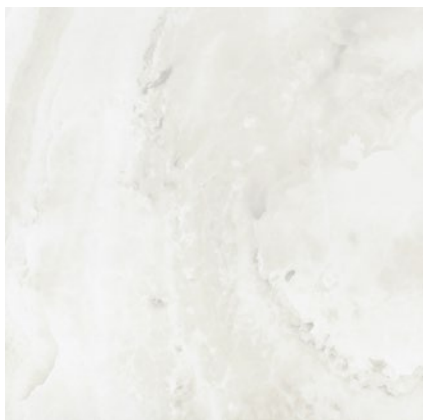
Tundra XGLOSS Natural



Aura 15 NATURAL Collection



18 Nature XGLOSS Natural



Fiord XGLOSS Natural



Nilium INDUSTRIAL Collection



Bergen STONIKA Collection



Portum NATURAL Collection



Danae NATURAL Collection



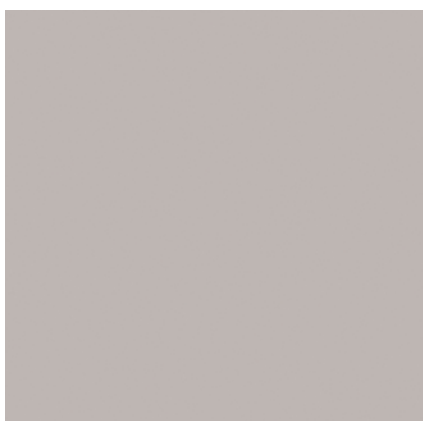
Edora NATURAL Collection



Sasea NATURAL Collection



Arga STONIKA



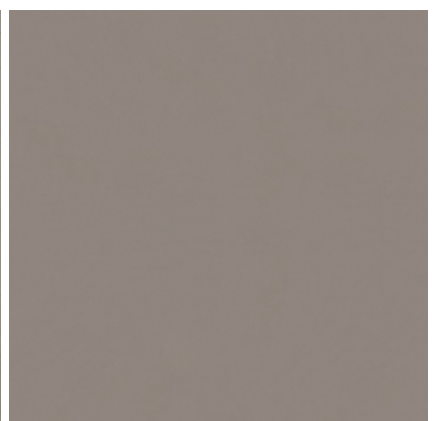
Ventus SOLID Collection



Sirocco NATURAL Collection



Strato TECH Collection



Lumina XGLOSS Natural

ATTACHMENTS



Galema SOLID Collection



Vegha XGLOSS Natural



Kreta INDUSTRIAL Collection



Soke INDUSTRIAL Collection



Sogne STONIKA



Orix INDUSTRIAL Collection



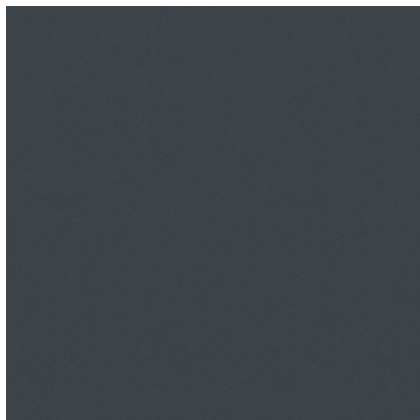
Kira NATURAL Collection



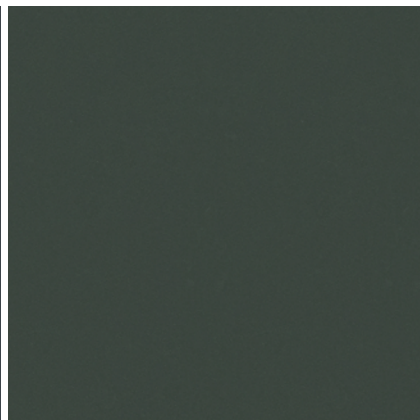
Trilium INDUSTRIAL Collection



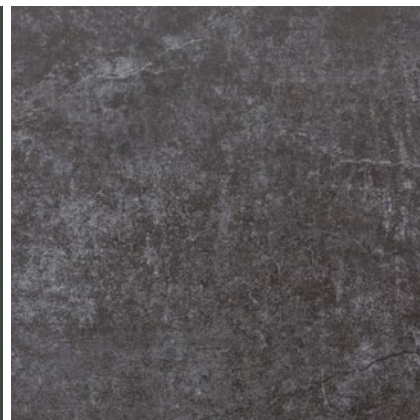
Bromo NATURAL Collection



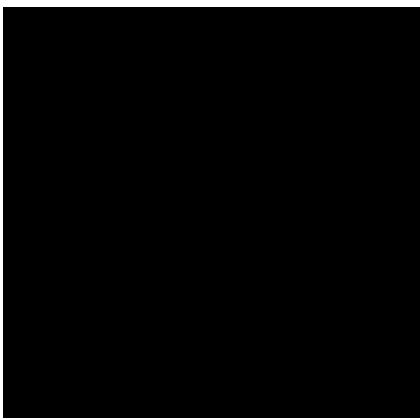
***Baltic** SOLID Collection



***Feroe** SOLID Collection



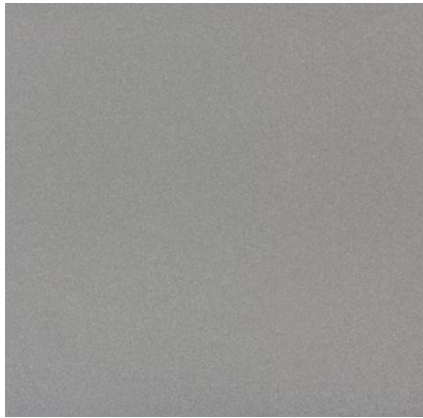
Laos INDUSTRIAL Collection



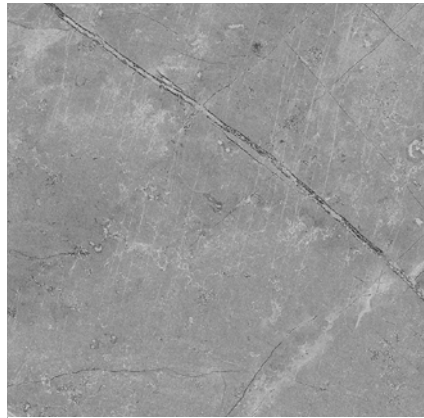
Spectra XGLOSS Solid

*Special orders. Subject to availability of material.

Ultra Texture Ultra Matt Velvet Texture XGloss Eco Dekton Thickness 3Cm



Manhattan XGLOSS Basic



Vera NATURAL Collection



Korus SOLID Collection



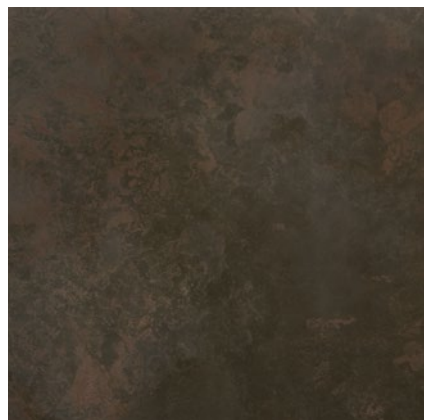
Blaze XGLOSS Solid



Korso STONIKA



Milar INDUSTRIAL Collection



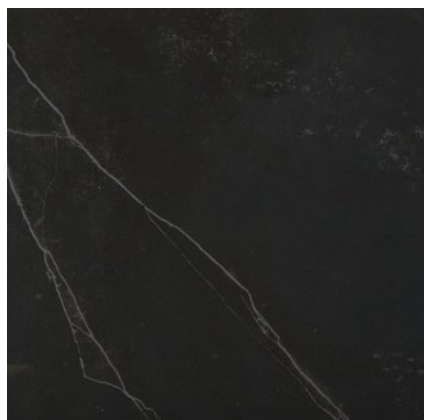
Keranium TECH Collection



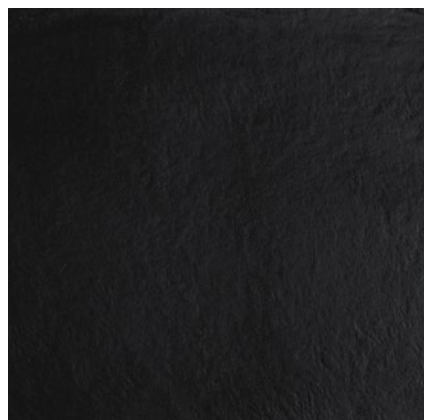
Radium INDUSTRIAL Collection



Fossil NATURAL Collection



Kelya NATURAL Collection



Sirius SOLID Collection



Domoos SOLID Collection

We have a presence all over the world in order to be close to our clients and their projects

Our Cosentino CITIES, located in some of the world's most iconic cities, create spaces where everyone can discover Dekton® and the latest market trends with all five senses. As well as being used as an office, these spaces can be set up for meetings, classes, exhibitions, and much more. We see them as dynamic, social spaces and the ideal setting for exchanging ideas.

Wherever they are in the world, our Cosentino CENTERS are the epicentre of our company. Anyone with a curiosity or passion for design is welcome to visit our warehouses to experience our life-size products close-up and to see them in use. We know all there is to know about Dekton®'s rich colour variety and what it brings to the world of design.

• COSENTINO CITY

UNITED STATES

Cosentino ANAHEIM
 Cosentino ATLANTA
 Cosentino AUSTIN
 Cosentino BOSTON
 Cosentino CHARLOTTE
 Cosentino CHICAGO
 Cosentino CINCINNATI
 Cosentino DALLAS
 Cosentino DENVER
 Cosentino DETROIT
 Cosentino FORT LAUDERDALE
 Cosentino HAWAII
 Cosentino HOUSTON
 Cosentino KANSAS CITY
 Cosentino LONG ISLAND
 Cosentino LOS ANGELES
 Cosentino MILWAUKEE
 Cosentino MINNEAPOLIS
 Cosentino NASHVILLE
 Cosentino NEW JERSEY
 Cosentino NEW ORLEANS
 Cosentino ORLANDO
 Cosentino PHILADELPHIA
 Cosentino PHOENIX
 Cosentino PITTSBURG
 Cosentino PORTLAND
 Cosentino RALEIGH
 Cosentino ROCHESTER
 Cosentino SACRAMENTO
 Cosentino ST. LOUIS
 Cosentino SALT LAKE CITY
 Cosentino SAN DIEGO
 Cosentino SAN FRANCISCO
 Cosentino SEATTLE
 Cosentino SPOKANE

Cosentino TAMPA
 Cosentino VIRGINIA
 Cosentino WASHINGTON DC
[Cosentino CITY LOS ANGELES](#)
[Cosentino CITY MANHATTAN](#)
[Cosentino CITY MIAMI](#)
[Cosentino CITY SAN FRANCISCO](#)
 Cosentino HUB HOUSTON
 Cosentino HUB NORFOLK

CANADA

Cosentino CALGARY
 Cosentino QUEBEC
 Cosentino TORONTO
 Cosentino VANCOUVER
[Cosentino CITY MONTREAL](#)
[Cosentino CITY TORONTO](#)

MEXICO

Cosentino MEXICO DF

PUERTO RICO

Cosentino LO PUERTO RICO

MALAYSIA

Cosentino KUALA LUMPUR

SPAIN

Cosentino A CORUÑA
 Cosentino ALMERÍA
 Cosentino BARCELONA
 Cosentino BILBAO
 Cosentino CASTELLÓN
 Cosentino GIRONA
 Cosentino GRANADA
 Cosentino MADRID

Cosentino MÉRIDA
 Cosentino MURCIA
 Cosentino SAN SEBASTIAN
 Cosentino SANTANDER
 Cosentino SEVILLA
 Cosentino TOLEDO
 Cosentino VALENCIA
 Cosentino VALLADOLID
 Cosentino VIGO
[Cosentino CITY BARCELONA](#)
[Cosentino CITY MADRID](#)

PORTUGAL

Cosentino LISBOA
 Cosentino PORTO

BRAZIL

Cosentino FORTALEZA
 Cosentino GOIÂNIA
 Cosentino LATINA VITORIA
 Cosentino RECIFE
 Cosentino SANTA CATARINA
 Cosentino SAO PAULO IRELAND
 Cosentino DUBLIN

UNITED KINGDOM

Cosentino BELFAST
 Cosentino DARLINGTON
 Cosentino EAST LONDON
 Cosentino GLOUCESTER
 Cosentino HOOK
 Cosentino MANCHESTER
 Cosentino NEWMARKET
 Cosentino SCOTLAND
[Cosentino CITY LONDON](#)



DENMARK

Cosentino DENMARK

FINLAND

Cosentino HELSINKI

GERMANY

Cosentino BERLIN
 Cosentino DÜSSELDORF
 Cosentino MÜNCHEN
 Cosentino STUTTGART

ITALY

Cosentino CATTOLICA
 Cosentino LAZIO
 Cosentino MILANO
 Cosentino TORINO
 Cosentino TURIN
 Cosentino VENEZIA
[Cosentino CITY MILAN](#)

FRANCE

Cosentino LYON
 Cosentino MARSEILLE
 Cosentino PARIS
 Cosentino RENNES
 Cosentino STRASBOURG
 Cosentino TOULOUSE

AUSTRIA

Cosentino WIEN

BELGIUM

Cosentino BELGIUM

NORWAY

Cosentino OSLO

SWEDEN

Cosentino GÖTEBORG
 Cosentino STOCKHOLM

SWITZERLAND

Cosentino ZÜRICH

NETHERLANDS

Cosentino THE NETHERLANDS

ISRAEL

Cosentino CAESAREA
 Cosentino TEL AVIV

TURKEY

Cosentino ANKARA
 Cosentino ISTANBUL
 Cosentino IZMIR

SINGAPORE

Cosentino SINGAPORE
[Cosentino CITY SINGAPORE](#)

AUSTRALIA

Cosentino ADELAIDE
 Cosentino BRISBANE
 Cosentino MELBOURNE NORTH
 Cosentino MELBOURNE SOUTH
 Cosentino PERTH
 Cosentino SYDNEY
[Cosentino CITY SYDNEY](#)
 Cosentino HUB SYDNEY

NEW ZEALAND

Cosentino AUCKLAND
 Cosentino LO CHRISTCHURCH

JAPAN

Cosentino LO TOKYO

SOUTH AFRICA

Cosentino JOHANNESBURG
 Cosentino LO CAPE TOWN

UAE

Cosentino LO DUBAI
[Cosentino CITY DUBAI](#)

POLAND

Cosentino WARSAW

Find inspiration and resources on pro.cosentino.com



A product designed by **COSENTINO**

COSENTINO HEADQUARTERS
Ctra. Baza a Huércal-Overa, km 59. 04850 Cantoria – Almería (Spain)
+34 950 444 175 info@cosentino.com
www.cosentino.com www.dekton.com
f DektonbyCosentino @Dekton