



CORE *EDGE*

FLEXIBLE STEEL EDGINGS & RINGS

CORE landscape
Products

www.corelp.co.uk

CORE EDGE



CORE EDGE

Manufactured from 1.6mm mild steel and hardy enough to handle ride on mowers and light vehicles.

This flexible steel edging can be quickly installed with no specialist tools required. Easily forming both straight lines and curved radiuses, or bent on site to form precise angles. It provides the perfect edge restraint in a variety of landscaping applications.

All of our edgings except our weathered steel (Cor-Ten effect) have a 20-micron Galvanised Zinc coating. Our (RAL) coloured edgings have a further 110-micron UV resistant polyester

powder coating preventing colour fade, forming a durable scratch resistant barrier to guarantee a 20yr plus product life.

Looking for something bespoke?
Contact our production team with your requirements... 01753 652 555



SIZES



Face Height ①	Spike Length ②	Weight
65mm	85mm	1.04Kg
100mm	95mm	1.42Kg
150mm	115mm	2.25Kg

COLOURS & FINISHES



TECHNICAL SPECIFICATION

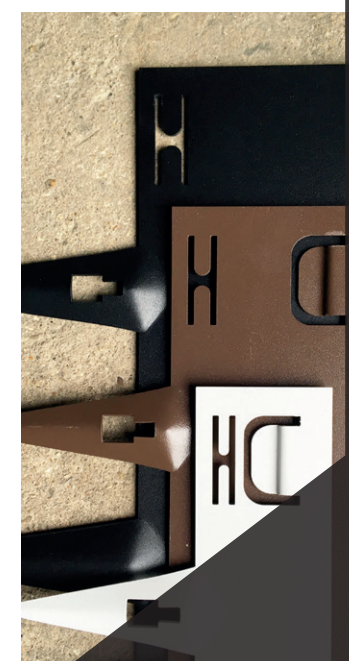
Material	Flexible Mild Steel
Edging Thickness	1.6mm
Overall Length	1075mm
Connected Length	1000mm
Quantity Per Pack	5 Edgings

APPLICATIONS

- Lawn & Border Edging
- Path & Patio Edging
- Flower & Vegetable Bed Edging

BENEFITS

- EASY INSTALL
- WEATHER RESISTANT
- STRONG



FLEXIBLE STEEL EDGINGS





CORE EDGE HD

Manufactured from 2.5mm mild steel and hardy enough to handle vehicular traffic.

Available in both 1075mm and 2275mm lengths. The longer edgings are ideal for larger applications as it cuts down the number of connections and reduces the install time.

They can easily form both straight lines and curved radiuses, or be bent on site to form precise angles just the same as the domestic edgings.

Similar to the domestic CORE Edge, the

heavy duty trade range of edgings have a 20-micron Galvanised Zinc coating and are available in four powder coated colours, a bright zinc galvanised finish and a cor-ten effect weathered steel.

Can't decide which finish?

Request a free swatch sample online or call our sales team on 01753 652 555.



CORE EDGE HD LONG

← 2275mm →

Face Height ①	Spike Length ②	Weight
65mm	85mm	3.5Kg
100mm	95mm	5.0Kg
150mm	115mm	7.5Kg

CORE EDGE HD

← 1075mm →

Face Height ①	Spike Length ②	Weight
65mm	85mm	1.6Kg
100mm	95mm	2.4Kg
150mm	115mm	3.4Kg



TECHNICAL SPECIFICATION

Material	Flexible Mild Steel
Edging Thickness	2.5mm
Overall Length	1075mm or 2275mm
Connected Length	1000mm or 2200mm
Quantity Per Pack	5 (can be sold individually)



HEAVY DUTY FLEXIBLE EDGINGS





Installation

The guide opposite is designed to be an overview of the installation process. As you can appreciate site conditions will often vary slightly so please call our technical team if you have any questions regarding suitability or installation that have not been covered in the install guide or FAQ's below: **0800 118 22 78**



FAQ's

Q | Is it possible to create a corner with CORE EDGE?

A | Yes! creating a 90 degree corner is simple. Place the edging you wish to bend on the floor and mark a line where the centre of the corner needs to be. Place another edging or block of wood on the marked line, put your foot on the edging to stabilise it and bend the edging upwards to achieve the desired angle.



Q | What is the benefit of having 2 locking tabs?

A | Our improved connection incorporates 2 locking tabs which will enable multiple edgings to be connected together and then installed as one. The 2 fixed points mean the edging cannot pivot when lifted. This is particularly handy when creating a large curve as the desired shape can be achieved before the edging is installed in the ground.



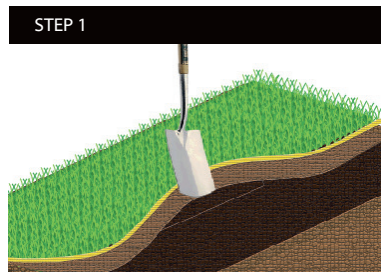
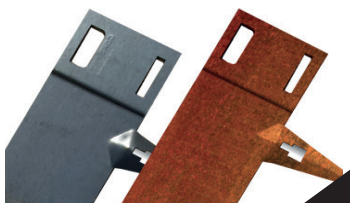
Q | What's the best way to measure a curved / complex shape?

A | Simply lay out a hose or rope to the desired shape, then lift it and measure its length. It's always easier to mark the ground with a can of spray paint or wooden stakes before lifting the rope to make sure your edging goes exactly as you first intended.

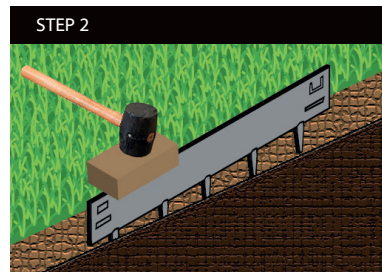


Q | How long does it take for Cor-Ten rusty effect to show?

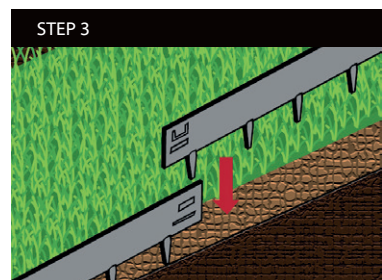
A | All of our Cor-Ten effect weathering steel edgings are supplied in their raw state which means they will arrive as a dull greyish/blue colour. Depending on weather conditions, it will take approx 3-6 months for the edging to become fully weathered.



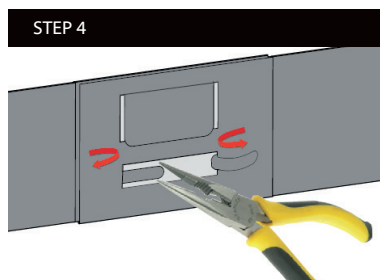
1. Using a piece of rope or string line, make a guide for your edging to follow. If the ground is relatively soft you're good to go. If not, you may need to loosen the ground with a flat spade or pickaxe to ensure the edging can be installed without difficulty.



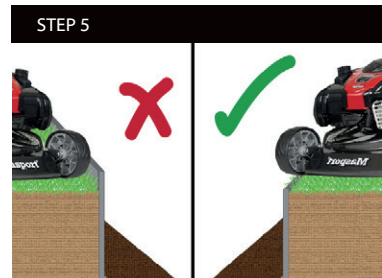
2. Starting at one end, tap the edging down using a wooden block and mallet. Ensure the edging remains vertical as it is driven into the ground, this prevents twisting when it comes to installing your next edging.



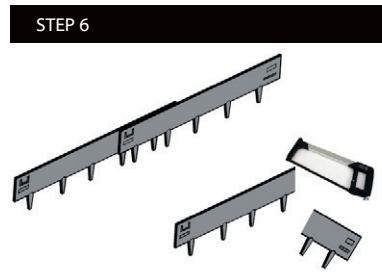
3. Before driving the whole edging into the ground connect the next edging. Try to maintain a continuous line along the top of the edgings when tapping them into the ground to prevent the connections from coming apart.



4. Connect the edgings by sliding the large tab on one edging down through the slit on the adjacent edging. Using a pair of thin nosed pliers, pull both of the thin locking tabs through the slit provided and twist them back on themselves.



5. If you are using the edging on a lawn area the top of the edging should be flush with the soil to prevent the lawn mower blade from making contact with the top of the edging. Lowering the edging slightly to be level with the ground will prevent any damage.



6. If you have an edging that is too long, you can either overlap the last joint or cut the edging piece with a hacksaw. Be sure to use a metal file to smooth over the cut end and we recommend applying a metal primer paint to prevent any rusting.



CORE TREE RINGS



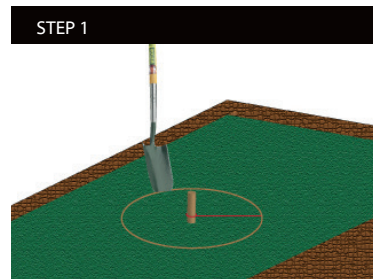
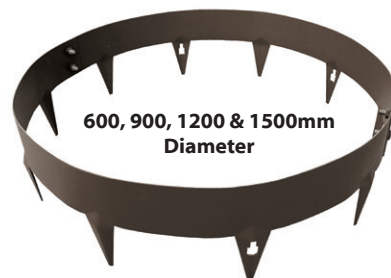
CORE TREE RINGS

A range of pre-rolled steel garden rings designed to create the perfect edge restraint for your plants, trees, shrubs, and bushes.

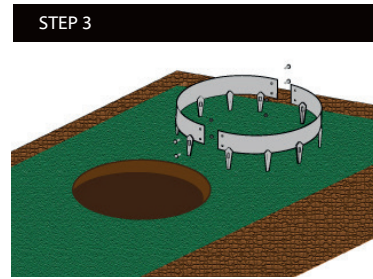
Our garden rings are galvanised and then powder coated which ensures the longevity of their working life. This makes them exceptional value for money.

The rings will not rust or flake, they will not shatter if caught with a strimmer or mower. Furthermore, they have no sharp edges and have 3 round head bolts to secure each section.

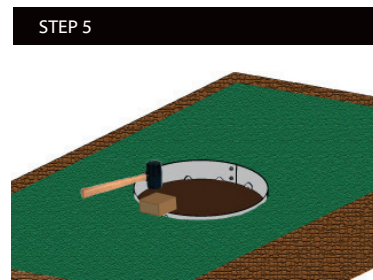
The face and the ground spike are formed from a single piece of steel. The spike has a unique fold along its center to provide maximum strength. Reinforcing the spike, making it ideal for use in tougher ground conditions.



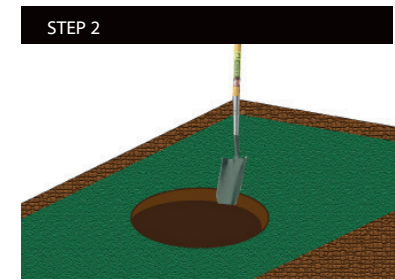
1. Firstly, mark out where you wish to put the Tree Ring according to the size you have ordered. For 600mm Tree Ring mark a 300mm radius from the centre peg, for a 900mm Tree Ring mark 450mm radius.



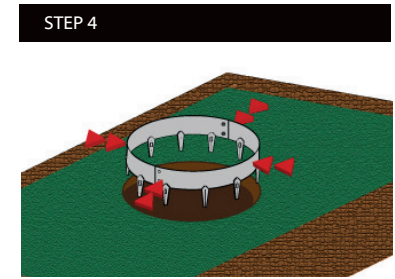
3. Position the edging sections on a flat even surface, this will be 2 sections for the 600mm and 3 sections for the 900mm. Using the bolts provided secure the edging sections together.



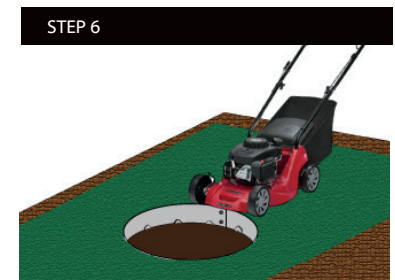
5. Using a mallet and block of wood tap the top of the edging to position the tree ring firmly into place.



2. Using a garden spade cut around the edge of the marked area first and then remove the soil to the depth required according to the height of the Tree Ring. (75mm)



4. Position the ring over the top of the hole and insert the ring slowly, at this stage the Ring will still be flexible which will allow you to adjust it to fit the exact shape of the hole.



6. Ensure the top of the tree ring is flush with the surrounding soil to prevent any damage to the edging when mowing the surrounding area.

Available in 6 Finishes



BLACK

BROWN

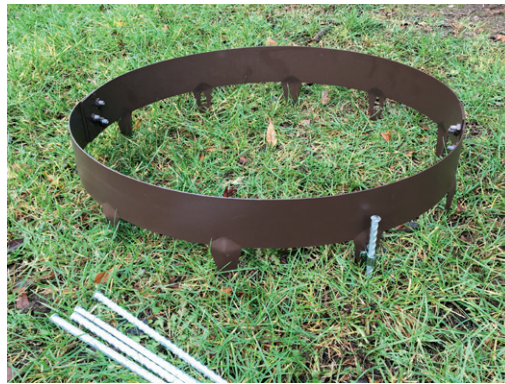
GREEN

GREY

GALVANISED

COR-TEN





SOFT GROUND EXTENSION PINS

When installing CORE Edge, sometimes the incorporated ground spike will not be sufficient enough to stabilise the edging especially when soft ground is encountered.

We have a simple but effective solution with our soft ground extension pins. The ingenious expanding clip and galvanised rebar means you can reinforce the ground spike by an additional 300mm.

The clip is inserted through the pre-made slot on the ground spike, the 8mm galvanised rebar pin is then inserted through the clip and driven into the ground. The clip expands to

form a rigid connection with the edging giving you additional support required to stabilise the edge and keep it upright.

One of the main benefits of the system is that it can be installed after the edging has started to be installed. This means you will not need to relift any edgings to add additional support.

There are 3 clip holes in each of the 1075mm edgings and 5 holes in the 2275mm lengths. The pins can also be used with our tree rings if required.



1. If the edging has already been installed, but just isn't quite sturdy enough you can easily add the extension pins for additional support. First you will need to expose the clip hole on the ground spike either by slightly lifting the edging or digging away the surrounding soil.



2. On the 1075mm edgings there are 3 available clip holes. On the 2275mm edgings there are a total of 5 holes. It may not be necessary to use an extension pin in each available hole, it will depend on ground conditions.



3. Insert the clip through the hole on the ground spike. You can have the extension pin on either the front or the back of the edging whichever suits your installation best, however it is easier to insert the clip from the front and have the pin at the back of the edging due to the concave design of the ground spike.



4. Ensure to push the clip all the way through until the two smaller flanges are through the hole and lock into place. It may be necessary to squeeze the back of the clip to enable the two flanges through the hole. On the HD edgings it is easier to angle the clip slightly to allow the one flange through at a time.



5. Next you need to insert the pin through the top of the clip and start to drive the pin into the ground using a hammer. Take care when hitting the pin head not to make contact with the top of the edging as this may cause damage to the powder coating.



6. Once you have installed all the additional extension pins that you require you can tap the edging back down to the desired height using a mallet and a block of wood. This will push the clip to the top of the hole where it becomes slimmer creating an even tighter grip on the ground spike.

Available From:



Go to www.corelp.co.uk to see our full range of landscaping products

