

connection.uk.com

**connection**  
space that works



**Horizon**  
designed by Roger Webb Associates

Product Guide

# Horizon

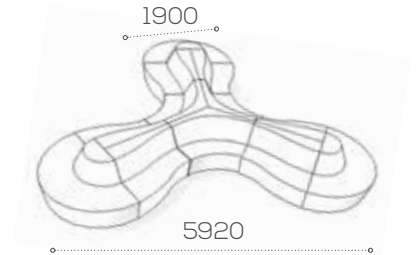
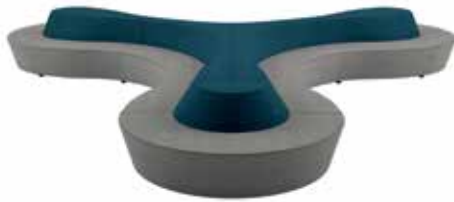


# Horizon

A truly modular seating system made to fit your space, style & imagination

Example configurations (please note dimensions are approximate)

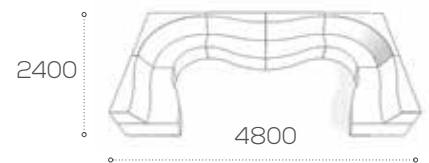
Triform



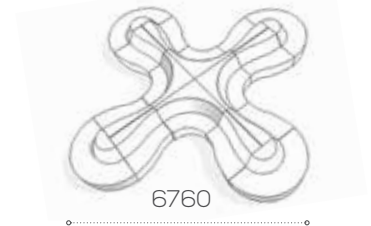
Island



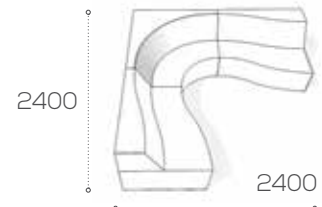
Wave



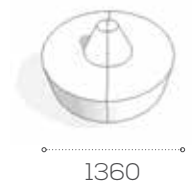
Quadrant



L-shape



Circle



# Horizon taking the environmental impact seriously

In everything we do, our aim is to ensure we act ethically and responsibly by adopting a high level of Corporate Social Responsibility. This is embedded in all our practices to the benefit of our customers, employees, suppliers and the communities within which we operate.

Throughout all Connection's processes, we consider their impact upon the environment, from the initial design of the product, through its manufacture and delivery, right up to its disposal when it has reached the end of its useful life.

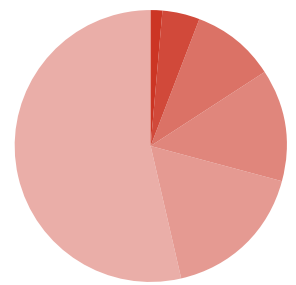
## Horizon SHZ1 and SHZ2

Composition right-hand and left-hand wave bench

- 22% Recycled Content
- 100% Recyclability
- 60.5kg CO<sup>2</sup>e Carbon Footprint



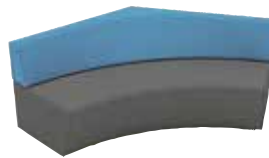
- 0.1% Steel
- 4.5% Fabric
- 10.2% Birch (wood)
- 13.6% Plywood
- 17.4% CMF\* RECY
- 54.3% MDF



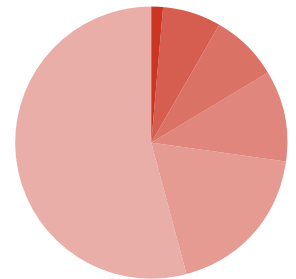
## Horizon SHZ5

Composition 120° 1200 bench

- 26% Recycled Content
- 100% Recyclability
- 80.2kg CO<sup>2</sup>e Carbon Footprint



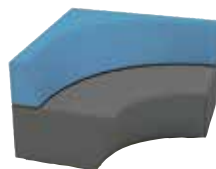
- 0.1% Steel
- 7.0% Fabric
- 8.2% Birch (wood)
- 11.0% Plywood
- 19.0% CMF\* RECY
- 54.8% MDF



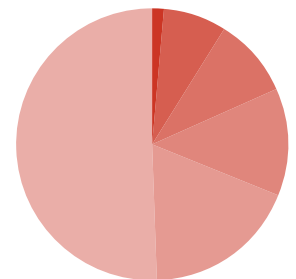
## Horizon SHZ11

Composition 90° bench

- 26% Recycled Content
- 100% Recyclability
- 70.0kg CO<sup>2</sup>e Carbon Footprint



- 0.1% Steel
- 7.7% Fabric
- 9.6% Birch (wood)
- 12.8% Plywood
- 18.6% CMF\* RECY
- 51.2% MDF



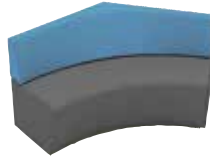
\*Combustion modified foam



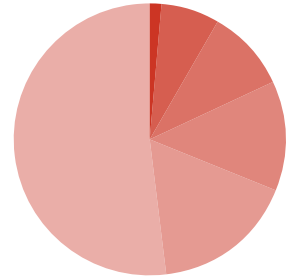
Horizon SHZ6

Composition 120° 900 bench

- 25% Recycled Content
- 100% Recyclability
- 66.1kg CO<sup>2</sup>e Carbon Footprint



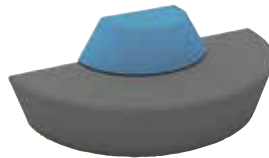
- 01% Steel
- 7.2% Fabric
- 9.8% Birch (wood)
- 13.1% Plywood
- 17.3% CMF\* RECY
- 52.5% MDF



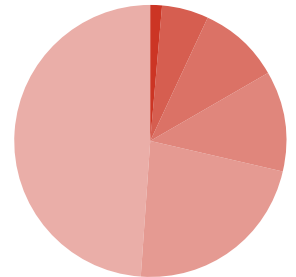
Horizon SHZ10

Composition large D-end bench

- 28% Recycled Content
- 100% Recyclability
- 70.4kg CO<sup>2</sup>e Carbon Footprint



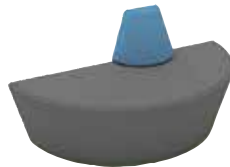
- 01% Steel
- 5.6% Fabric
- 9.9% Birch (wood)
- 12.1% Plywood
- 22.9% CMF\* RECY
- 49.5% MDF



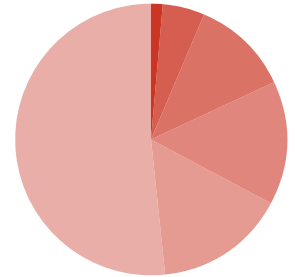
Horizon SHZ9

Composition small D-end bench

- 20% Recycled Content
- 100% Recyclability
- 51.6kg CO<sup>2</sup>e Carbon Footprint



- 01% Steel
- 5.2% Fabric
- 11.7% Birch (wood)
- 15.7% Plywood
- 15.1% CMF\* RECY
- 52.2% MDF





A large, stylized, dark grey 'C' logo is centered on the page. It consists of a thick outer ring and a smaller inner circle, both with rounded ends, creating a sense of movement and connection.

Head Office  
Dogley Mills  
Penistone Road  
Fenay Bridge  
Huddersfield  
West Yorkshire  
HD8 0LE

Tel: 01484 600 100

[sales@connection.uk.com](mailto:sales@connection.uk.com)

London Showroom  
32/33 Dallington Street  
Clerkenwell  
London  
EC1V 0BB

Tel: 020 7253 9877

[www.connection.uk.com](http://www.connection.uk.com)