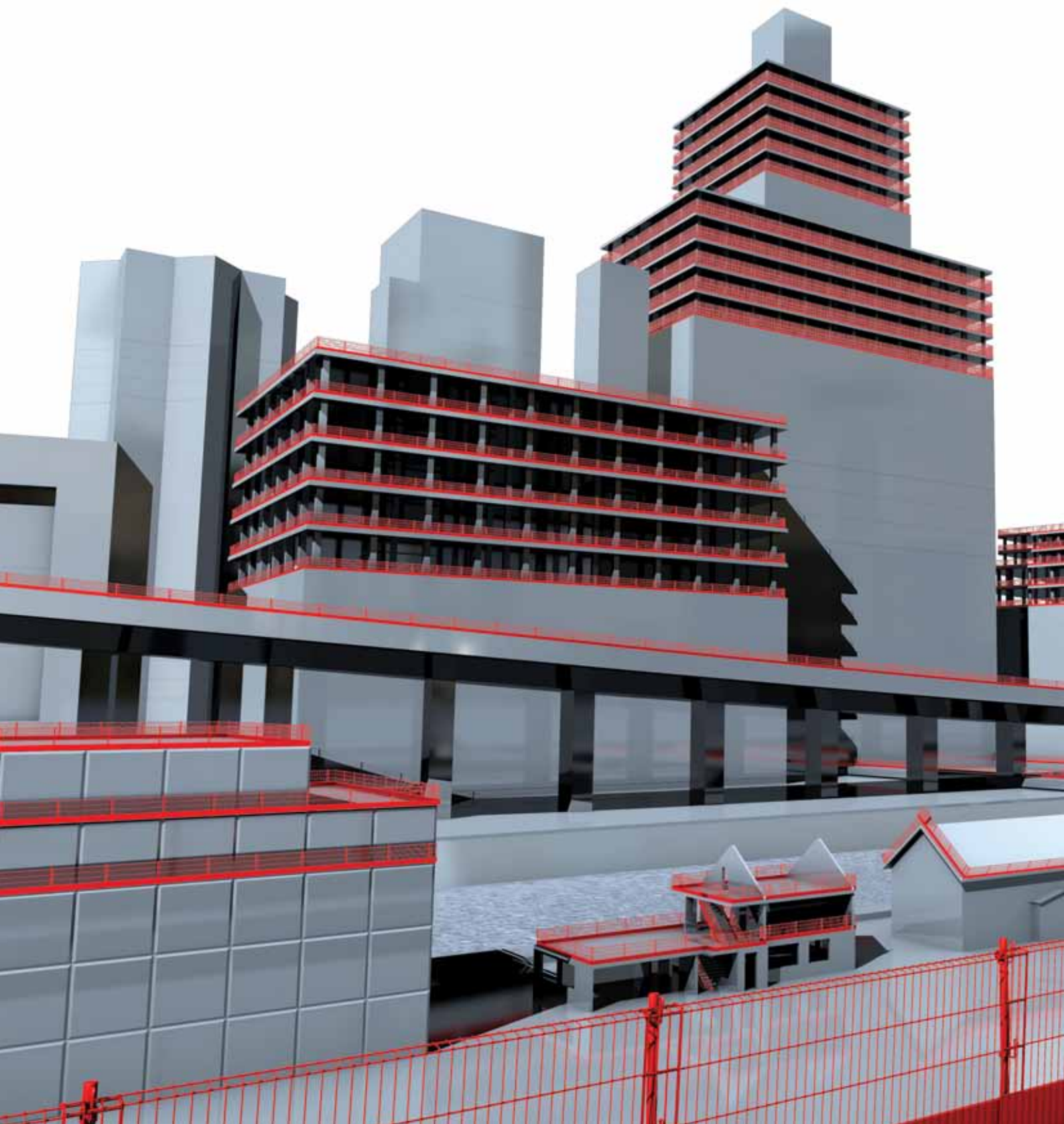


# Edge Protection Systems Engineered to protect, designed to adapt



Smarter Edge Protection

**COMBISAFE**<sup>®</sup>  
SAFETY BY SYSTEMS

# WORLDWIDE LEADERS IN ON-SITE SAFETY

With a commitment to innovation in edge protection, fall prevention, weather protection and temporary access, Combisafe offers a comprehensive and highly adaptive range of high quality products and systems that continually set new standards in safety, whilst working at height and on-site.

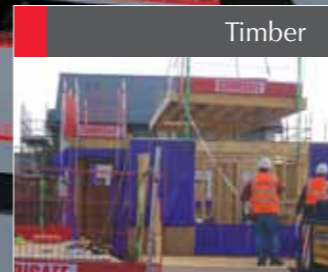
With industry leading products, exceptional project design and expert engineering support from the outset, Combisafe provides the total solution for your temporary edge protection needs.



## DELIVERING SEAMLESS EDGE PROTECTION

Our product portfolio comprises of a broad range of product systems suitable for most construction challenges. Led by our industry-leading Steel Mesh Barrier (SMB) system, our range also includes innovative solutions such as Multi Mesh Barriers (MMB), Net Barrier System, Full Height Containment and our Fast Frame™ system – developed specifically for high rise steel frame construction.

Our entire product portfolio is accompanied by a truly comprehensive range of attachments, fixings, posts and accessories to ensure that our products can be used universally. For added safety, many Combisafe products are designed for pre-assembly on the ground – allowing them to be fully integrated with building elements before being lifted into position.



# WHY CHOOSE COMBISAFE?

For over 25 years, Combisafe has worked in partnership with every sector of the construction industry to develop innovative solutions for the protection of people working at height. One of the greatest advantages of our long term partnership with the industry is the understanding we have developed about how our products are actually used on-site, this allows us to tailor our product systems and accessories to address our customers' specific needs.

There are many reasons why people trust Combisafe to provide their temporary edge protection solutions. Here are just a few of the most common reasons why people choose the industry leading protection offered by Combisafe.



## Project Manager

**Partnership** – From the earliest stages of your project, the Combisafe team of experts will work with you to develop cost-effective solutions to your unique safety challenges.

**Versatile** – Suitable for almost every type of construction project, the Combisafe product range has been designed and tested to offer an exceptionally flexible way of providing temporary edge protection.

**Value** – With high quality manufacturing, a host of valuable integrated features and knowledgeable support from the outset, Combisafe offers exceptional value.



## Health & Safety Managers

**Specialist** – Every Combisafe product is the culmination of decades of specialist experience in protecting people working at height.

**Confidence** – Combisafe products are designed to provide workers with confidence whilst limiting their ability to work outside of agreed methods when working at height.

**Safe** – Precision engineered systems offering trustworthy protection - you can be 100% sure that every factor has been considered when you choose Combisafe.



## Quantity Surveyors

**Fast** – Our products are designed to be quick and simple to install, reducing on-site delays and ultimately the cost of labour.

**Efficient** – With a product range characterised by adaptability, Combisafe products can be used in many ways, minimising the amount of equipment required on-site.

**Price** – Whilst Combisafe products are not the cheapest on the market, they are designed and manufactured for enhanced long term cost effectiveness.



## Work Force

**Secure** – Whether working above or below ground, Combisafe products offer industry leading levels of safety so you can work with complete confidence.

**Straightforward** – Combisafe systems have been specifically designed to ensure that using them on-site is fast, straightforward and absolutely problem free.

**Helpful** – As well as providing reliable safety, many of our products feature additional integral features to help you to meet your work programme.



## Sub-Contractors

**Personal** – Every Combisafe product has been designed to offer a best-in-class level of personal safety to protect people working in potentially hazardous situations.

**Trust** – Why expose yourself to potential liability? When you choose Combisafe, you receive temporary edge protection you can trust.

**Efficient** – To help preserve your margin of profit, every Combisafe product is designed for complete efficiency and seamless integration into your working methods.

## Concrete



**Systemised** – Our product range offers a genuinely systemised solution for providing best-in-class temporary edge protection.

**Complete** – We offer a complete safety solution that eliminates the need for additional precautions such as harnesses and airbags.

**Universal** – Combisafe offers the largest accessories range in the industry to ensure that our product systems can be used virtually anywhere.

## Steel



**Systemised** – We offer a wide range of sector specific innovations such as Fast Frame™ – created especially for steel construction.

**Adaptable** – The entire Combisafe product range has been developed to offer exceptional adaptability for even the most challenging construction projects.

**Quality** – Every Combisafe product is manufactured and tested to the most exacting standards. Simply put, our products are designed and built to last.

## Timber



**Reliable** – Our products are trusted throughout the construction industry for their absolute reliability in even the toughest of circumstances.

**Robust** – The entire Combisafe product range has been specifically designed and manufactured to withstand the rigours of modern construction.

**Practical** – Combisafe offer a comprehensive range of highly practical solutions developed to work seamlessly with every type of project.

## Civil Engineering



**Simplicity** – Requiring no specialist training to install, Combisafe products offer many important advantages over traditional edge protection solutions.

**Complete** – We offer a complete solution for temporary edge protection where every system in our range is designed to be inter-compatible.

**Scalable** – From the smallest projects to the very largest, Combisafe products have been designed to operate seamlessly with your work methods and programmes.

## EXPERT DESIGN AND PLANNING SUPPORT

For over 25 years Combisafe has been working in partnership with the international construction industry to develop a comprehensive range of on-site safety systems.

Industry leading safety is one thing, but we understand that our customers demand more from their investment which is why we provide a specialist engineering and design service from the outset. Not only does this allow us to ensure that our systems exactly meet your safety needs, but also that they offer genuine value too. We even operate our own test laboratory to develop bespoke product solutions.

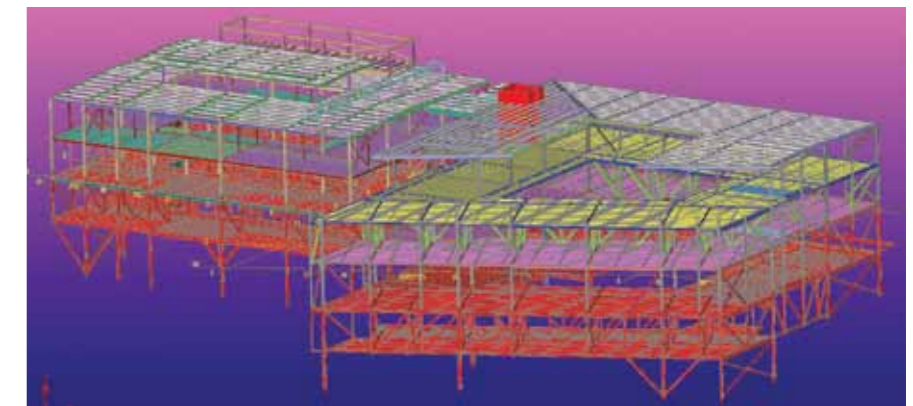
In addition to this, Combisafe also offers access to a network of specialist expertise, after-sales care and training through our extensive field service team. To assist with your long term commitment to at height safety, Combisafe also offers fall safety planning services alongside training courses, demonstrations and practical exercises at our safety centres.



### INTELLIGENT PLANNING



Intelligent planning is central to on-site safety, which is why we like to work with our customers from the outset to maximise the benefits of our edge protection systems, as well as improving site productivity and reducing lead times.



### THE COMBISAFE DIFFERENCE



Our business has been built on providing high quality, reliable safety systems that protect people who work on-site, and particularly those that work at height, but our long term success has been built on our commitment to finding better ways to work with our customers. We call this the Combisafe Difference.

Across 25 years we have built an unrivalled platform of specialist knowledge and experience from our involvement with the Construction Industry. Working with us guarantees you all the expertise you'll need to make proactive decision about on-site safety.

With specialist solutions available for every construction sub-sector, Combisafe products are proven to be more effective, more adaptable, and simpler to install than comparable safety systems. With the widest selection of attachments and accessories in the industry, you can rely on us to find a solution that exactly meets your needs.

Simply put, when you choose Combisafe, you choose the expertise of a genuine market leader, where every factor has been considered, and every product tested to an unrivalled standard.



Steel Mesh Barrier (SMB) training at one of our safety centres.

# EDGE PROTECTION SYSTEMS



## THE STEEL MESH BARRIER SYSTEM (SMB)

The most commonly used system in our product range is the Steel Mesh Barrier (SMB) – an innovative and highly adaptable temporary edge protection solution used worldwide.

The SMB has been developed to offer an alternative safety system for the most challenging construction environments - combining a range of valuable benefits such as strength, durability, speed of installation and adjustability. The barrier is light to carry and easy to manoeuvre for improved transport and on-site handling.



## STEEL MESH BARRIER STAIR



## FEATURES AND BENEFITS

### MARKET LEADING RANGE - THE SMB SYSTEM FEATURES AN ARRAY OF INTEGRAL BENEFITS.

- Combined guardrails, toeboard and debris mesh.
- Steel mesh protection with impact-absorbing capacity.
- Closed and returned toeboard for enhanced debris containment at the slab edge.
- Adjustable height with no need for disassembly.
- Available in 2.6m and 1.3m widths.
- Available in square and circular post variants, the SMB system attachments and posts are compatible with most types of access structures.
- The SMB range is fully compliant with European regulations for temporary edge protection EN 13374.
- Returned top edge with no sharp edges.
- Reinforced side bars for enhanced durability.



In terms of edge protection, staircases have traditionally presented a significant safety challenge – previously even providing basic safety features generally necessitated the improvised cutting of tubes and timber boards which themselves carried inherent safety issues.

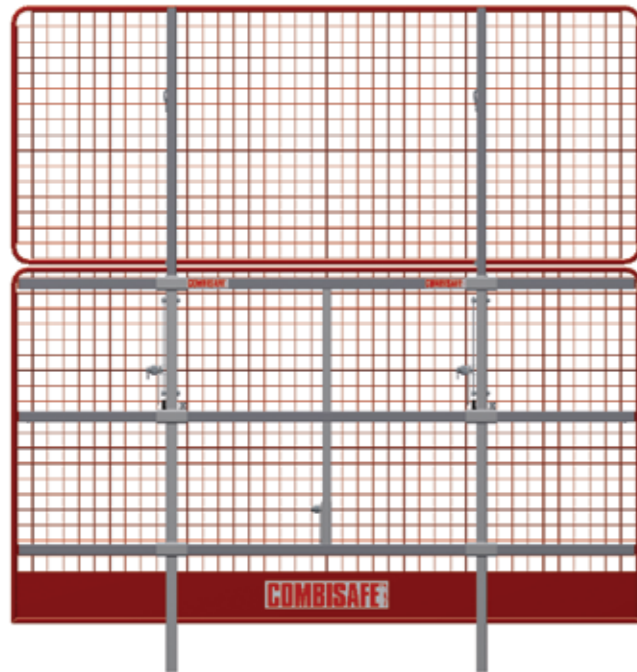
Based on the trusted SMB system, the Steel Mesh Barrier Stair System provides an unrivalled systemised solution specifically designed to work alongside SMB protected landings for exceptional continuous edge protection.

# EDGE PROTECTION SYSTEMS

## FAST FRAME™

Working with the construction industry to identify the specific safety needs of specialist project work, and having been commissioned to produce several bespoke solutions for customers in the high-rise steel frame industry, Combisafe developed Fast Frame™.

Designed for fast and simple installation using no specialist tools, the Fast Frame™ system slots effortlessly into pre-welded sockets on the perimeter beams to create an integral triple guardrail. Fully adjustable for slabs of any thickness, and easily enhanced with a Debris Mesh Barrier for greater containment, Fast Frame system represents an exciting innovation in temporary edge protection safety.



## MULTI MESH BARRIERS



The Multi Mesh Barrier incorporates barrier and post into one easy to install unit, limiting the number of components needing to be used and stored. The MMB can also include an integrated locking mechanism allowing adequately protected workers to open the barrier like a gate to access the edge.

- All in one unit, featuring integrated post and toe board.
- Lightweight (15kg – 18kg).
- 2137 x 1150mm and 2550 x 1150mm (with integrated lock)
- With no fixed centres, the MMB offers an adaptable way to access the edge with a wide mesh that can be worked through safely.

## NET BARRIER SYSTEM



Inspired by the European Standard for Temporary Edge Protection, Combisafe has developed an innovative Net Barrier System (NBS) that is specifically designed to meet EN 13374 class C. Perfect for providing edge protection around roofing projects, The NBS is the only product currently available that meets this important standard.

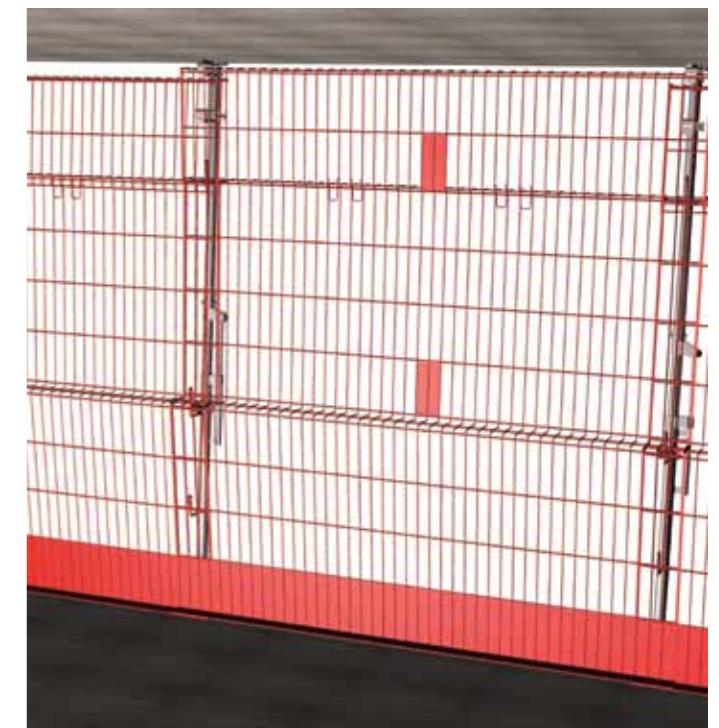
- The NBS offers the following features – Spans up to 10m between intermediate supports in its standard form.
- Coverage for large overhangs spanning over 1.5m.
- Offers roofers reassurance and confidence whilst restricting their ability to work outside agreed method statements.
- Provides a high degree of material and debris containment.

## CONTAINMENT SOLUTIONS

To address the hazard of loose building materials or dropped tools falling outside of the construction area, Combisafe provides a broad range of high quality containment solutions.

There is presently no European standard for construction containment, so Combisafe has created its own which combines either Steel Mesh barriers or Multi Mesh Barriers and debris netting.

Combisafe Containment units are designed to be effortlessly configured with our standard product range to provide a highly adaptable range of solutions offering seamless floor to soffit containment. To find out more, please refer to [www.combisafe.com](http://www.combisafe.com) or speak to a member of our customer service team.



# ATTACHMENTS

To address the ever evolving challenges of modern construction, we have developed a broad range of versatile attachments that deliver the highest standards of safety regardless of your building structure type.

Whether using one of our standard attachments, or a selection from the widest range of special order fitments in the market, we offer a seamless edge protection resource that integrates fully with your construction process and work programme.

The following attachments are a small sample of what Combisafe are currently able to supply. **If the solution you require is not shown, please contact our customer service team.**

1	Aluminium Beam Attachment	2	Balcony Attachment	3	Bridge Attachment	4	Bridge Edge Attachment	5	Bridge Parapet Plate
Used to attach to aluminium soffit beams and proprietary forming systems. Two models available for form beams with top flange thicknesses of 40mm and 60mm.		Designed to use cast-in channels or the fixings for permanent handrails. Includes fixing slots that accommodate large variations in diameter and spacing.		Used as edge protection for bridges, using the bolts for the permanent bridge barrier. Can also be used for other applications.		A compact and rapidly deployed attachment, designed primarily for construction joints on bridgeworks, and other starter bar applications.		Adjustable steel plate with bolt socket that can be fixed directly outboard of the existing parapet prior to removal.	
6	Eaves Attachment Adjustable	7	Eaves Attachment Adjustable Extended	8	Facade Bracket	9	Precast Attachment	10	Precast Edge Attachment
Adjustable attachment for roof edge protection. The adjustable post holder gives positioning flexibility. Used together with Telescopic Arm or Rear Support. (Not Shown)		Similar to the Eaves Attachment Adjustable, but featuring a larger Telescopic Arm, allowing more flexibility for post location.		Provides a post socket on a vertical face. Designed to work with the Filigree Edge Attachment but can be fitted independently.		For use with precast concrete slabs, permitting SMB or guardrails to be pre-installed at ground level before being lifted into place.		Cast into precast concrete at factory, delivered with 220mm sleeve to be inserted before topping is poured. Permits safe access for levelling off or other surface work.	
11	Flexi Attachment	12	Front Attachment	13	Jamb Attachment	14	Multi Clamp	15	Multi Foot
Provides a post attachment at an adjustable offset up to 360mm on a vertical surface for beam webs, walls, facades and shaft sides of slab edges.		Mounts vertically to provide both edge protection and shuttering support. Can also be mounted horizontally.		Provides a clear floor by fitting to vertical surfaces like slab edges, upstands, walls, shaft sides and reveals.		Versatile attachment covering a wide range of applications. Can be used horizontally or vertically over thicknesses ranging from 20mm to 500mm.		Used for horizontal surface applications. Three points of support for accurate installation on uneven surfaces.	
16	Plastic Sleeve / Plastic Plug	17	Shuttering Attachment	18	Slab Edge Bracket	19	Stair Attachment	20	Steel Clamp
Simple pre-planned attachment, cut to required length and fitted with Plastic Plug before being cast-in to the slab. Compatible with Safety Posts.		Mounted vertically and used both as an edge protection support and as a shuttering support. Using a single fixing point a wide range of applications can be covered.		Mounted vertically and used both as an edge protection support and as a shuttering support. The Slab Edge Bracket is secured using the tie holes.		Supports systems on stairs, allowing access to both top surface and soffit. Creates space for finishes and nosings.		Small, stable clamp attachment for steel. Grips to steel between 10mm and 50mm both horizontally or vertically.	
21	Steel Jaw clamp	22	Timber Beam Attachment	23	Verti Clamp	24	Variable Angle Attachment	25	Variable Flexi Attachment
Ensures secure attachment to steel beams and columns. Jaws can be re-positioned to increase the offset or to attach in both the horizontal and vertical plane.		Used to attach to timber soffit form beams and proprietary forming systems. Two models available for form beams with flange thicknesses of 40mm and 60mm.		Clamps to narrow members from 0mm to 150mm such as steel sheets. Features reversible jaws and can be mounted both horizontally and vertically.		Attachment for pitched or flat roofs, slabs, walls etc. Can be set at 5 different angles between 0° and 90° to the base plate.		Based on the Variable Angle Attachment frame, can be adjusted up to 970mm. Suitable for assembly on facades with long roof extension.	
26	Vertical Tube Attachment	27	Welded Socket	This is but an example of the range available. Please contact combisafe with your specific requirements and we will work with you to match our solutions with your needs.					
Used to fix edge protection on vertical circular tubes. Two models available - 48mm with coupler for scaffold tubes, and a 76mm coupler.		For use in pre-planned edge protection. Socket is welded to beam and can be adjusted to allow work to be carried out on the slab edge.		* Most attachments work with Precast concrete when used with a cast-in anchor. These are also available from Combisafe.					

## C-SYSTEM / S-SYSTEM

The unrivalled versatility across the SMB range is complemented by a vast assortment of attachments. This includes the C-System attachments designed for circular posts which integrate with traditional scaffolding couplers, while the S-System uses square posts which are widely used in Europe.

	Product Name	Steel Frame	Precast Concrete*	Concrete In-situ/Formwork	Civil Engineering	Modular Containment	Timber Frame
1	Aluminium Beam Attachment		•	•	•		
2	Balcony Attachment		•	•	•		•
3	Bridge Attachment	•	•	•	•		•
4	Bridge Edge Attachment		•	•	•		
5	Bridge Parapet Plate		•	•	•		
6	Eaves Attachment Adjustable						•
7	Eaves Attachment Adjustable Extended						•
8	Facade Bracket		•	•	•		•
9	Precast Attachment		•	•	•		
10	Precast Edge Attachment		•	•	•		
11	Flexi Attachment	•	•	•	•	•	•
12	Front Attachment		•		•		
13	Jamb Attachment		•	•	•	•	
14	Multi Clamp	•	•	•	•	•	•
15	Multi Foot	•	•	•	•	•	
16	Plastic Sleeve / Plastic Plug		•	•	•		
17	Shuttering Attachment			•	•		
18	Slab Edge Bracket			•	•		
19	Stair Attachment	•	•	•	•	•	•
20	Steel Clamp	•					
21	Steel Jaw Clamp	•			•		
22	Timber Beam Attachment			•	•		•
23	Verti Clamp	•		•	•	•	•
24	Variable Angle Attachment	•	•	•	•	•	•
25	Variable Flexi Attachment	•	•	•	•		•
26	Vertical Tube Attachment	•	•	•	•	•	•
27	Welded socket	•			•	•	

# ACCESSORIES

# PROJECTS FROM AROUND THE WORLD

To ensure that the SMB system is truly universal, Combisafe have developed an extensive range of accessories to facilitate broad use of the product. This is just a small selection of the accessories available; refer to [www.combisafe.com](http://www.combisafe.com) for the full catalogue.

<p><b>SMB HINGE</b></p> <p>A connecting joint, the SMB Hinge allows corners between 76° and 284° to be positioned anywhere along the barrier whilst preserving easy access.</p> 	<p><b>SMB ADJUSTER</b></p> <p>The SMB Adjuster allows the barrier to be adjusted in height without dismantling the system.</p> 	<p><b>SMB HOLDER</b></p> <p>The SMB Holder is adjustable on the Safety Post, allowing the barrier to be installed at any height, facilitating work under the barrier.</p> 
<p><b>GAP CLOSER</b></p> <p>For use with the SMB Stair system, the flexible Gap Closer fills gaps, voids, returns and protects against sharp edges.</p> 	<p><b>BARRIER CLIP</b></p> <p>Provides extra stability when used with the Steel Mesh Barrier and Make-up Barrier.</p> 	<p><b>COMBISTRAP</b></p> <p>A simple webbing strap with locking buckle. Acts as a strong, easily re-used cable tie. 400mm long.</p> 
<p><b>TOEBOARD HOLDER</b></p> <p>Fitted to the Safety Post to hold a toeboard in position, the Toeboard Holder permits simple fitting and dismantling with the guardrail in place.</p> 	<p><b>SAFETY POSTS</b></p> <p>When mounted in the various attachments and combined with SMB, the Safety Post offers reliable fall prevention support. The Quiclox locking mechanism permits fast, easy assembly.</p> 	<p><b>SAFETY POSTS</b></p> <p>Can be mounted in the various attachments and combined with the Steel Mesh Barrier. Quiclox locking mechanism eases installation and dismantling.</p> 
<p><b>ADJUSTABLE SAFETY POSTS</b></p> <p>Combined Safety Post and SMB Holder which allows the barrier to be set at the required height.</p> 	<p><b>SHAFT GATE</b></p> <p>Self-closing, the Shaft Gate is an access solution for service ducts, lift shafts or on any edge where access is required.</p> 	<p><b>BARRIER BOX / MULTI BOX</b></p> <p>The Barrier Box holds fifty SMB units for storage or transport. The Multi Box is a convenient, craneable container for small parts and attachments.</p> 

**Project:** adidas LACES, Herzogenaurach, Germany  
**Design & Build Contractor:** Prebeck GmbH  
**Client:** adidas AG  
**Products:** Steel Mesh Barrier S-System, Posts and Steel Jaw Clamps

“The edge protection system was completed on-site at ground level, and lifted into position by crane. Thus, we were not only able to increase the safety for our workers on-site, but also to reduce the risk of accidents enormously. No additional personal protective equipment, which is very expensive and has been used in the past to install the edge protection, was necessary, which saved us both time and costs.”  
 Heinrich Prem, Assembly Manager, Prebeck GmbH



**Project:** Pont de la Caille, Allonzier-La-Caille, France  
**Client:** Le conseil Général de Haute Savoie  
**Contractor:** DV Construction and VSL, Bouygues Construction France  
**Products:** Steel Mesh Barriers S-System, SMB Make-up, Posts and Site Stairways

“With a total height of 150m, a special edge protection was needed for this project. The modular system from Combisafe proved to be the best solution. By using the Steel Mesh Barriers we were able to protect our workers along the edge of the bridge as well as block the visibility of the deep valley underneath, which made them feel much safer.”  
 José Guimaraes, Site Manager, DV Construction



**Project:** DMCC Al Mas Tower, Jumeirah Lake, Dubai.  
**Client:** NAKHEEL.  
**Main Contractor:** TAISEI – ACC (JV).  
**Products:** Steel Mesh Barriers, Safety Net Fans Arabian Construction Co. (ACC)

“This was the first time ACC has used Combisafe products on one of our sites. The products were introduced to us at the start of the project, and we were impressed by the good quality of the materials used, but more importantly, they provided a solution to our need to maintain a high level of safety on our sites.”  
 Mohamad Hamze, Construction Manager



**Project:** Car Park P3, Airport Nürnberg, Germany  
**Client:** Flughafen Nürnberg GmbH  
**Main Contractor:** ARGE Neubau Parkhaus, Anton Schick GmbH & Co. KG, Völkel & Heidingsfelder Ingenieurbau GmbH  
**Products:** SMB S-system, Posts, Expanding Anchor Socket, Variable Angle Attachment

“We were looking for an edge protection system that enabled us to work on the concrete surface right at the edge of the building whilst ensuring total safety for all workers involved. We tested and compared various solutions but decided to use Combisafe as they convinced us of the high quality, user-friendliness and flexibility of their products, as well as the friendly and excellent customer service.”  
 Holger Hennig (Construction Manager, TeamJürgens)



# EDGE PROTECTION SYSTEMS

ENGINEERED TO PROTECT, DESIGNED TO ADAPT

Modular Literature for specific building methods available

